



**DEPARTMENT OF NATURAL RESOURCES
STATE OF MICHIGAN
TIMBER SALE PROSPECTUS #7769**

SCHEDULED SALE DATE AND TIME: 10:00 a.m. (local time) on January 6, 2026.

LOCATION: GLADWIN MGMT UNIT, 801 NORTH SILVERLEAF, GLADWIN, MI 48624.

PROSPECTUS NOTE: The bidder is advised to inspect the sale area and review the location, estimated volumes, operating costs and contract terms of proposed sales. Please be aware that some landowners may request 60 days or more notice for access across their land.

Notice is hereby given that bids will be received by the Unit Manager, GLADWIN MANAGEMENT UNIT, for certain timber on the following described lands:

61 Fish Creek (73-003-24) / T18N, R02E, SEC. 16, NWNW,S1/2NW,NWSW.

T18N, R02E, SEC. 17, NW,NE,SW,SE.

T18N, R02E, SEC. 20, E1/2NW.

T18N, R02E, SEC. 8 , SESW.

T18N, R02E, SEC. 9 , SWSW.

Gladwin County, Advertised Price \$240,120.70, 324.8 Acres, Hardwood, Aspen.

SALE NOTE: Access to Payment Units 4-6 and 8-9 is through a gate that must be locked at the end of each workday. The established creek crossing behind the gate will need gravel to fortify the crossing (at least 10 cubic yards). The access route will use the hiking trail and must be kept passable. Trees cleared to make the access route can be bought at the contract price after being scaled. Access to Payment Units 8 and 9 requires a stream crossing permit that has been obtained by the DNR. It is valid till June 17, 2029. Many units have seasonal wet ground so rutting could become a problem so care must be taken to avoid this. The southern portion of Payment Unit 8 will need to be hauled out through Payment Units 10 and 11.

A recreation site such as a trail, pathway, or campground is within the sale area or the vicinity. Certain restrictions/specifications may be applicable including time restrictions. Access may be through private or other public land.

Turnpike Red Pine (73-004-24) / T20N, R05W, SEC. 4 , SW,SWSE.

Clare County, Advertised Price \$140,650.30, 96.2 Acres, Red Pine, Hardwood.

Mosquito Misery (73-013-24) / T17N, R02E, SEC. 20, NW.

T17N, R02E, SEC. 29, NWSW,S1/2SW,S1/2SE.

Gladwin County, Advertised Price \$49,227.15, 111.4 Acres, Aspen, Hardwood.

SALE NOTE: A recreation site such as a trail, pathway, or campground is within the sale area or the vicinity. Certain restrictions/specifications may be applicable including time restrictions.

BID INSTRUCTIONS (VER. 10/10/2022):

1. Scheduled Bid Location, Date, and Time (2/11)

Bids must be received by the Unit Manager, GLADWIN OFFICE, 801 NORTH SILVERLEAF, GLADWIN, MI 48624, no later than 10:00 a.m. (local time) on January 6, 2026. For further information concerning this sale, contact Blair Tweedale at 989-426-9205 extension 7640.

2. Bidder's Qualifications (10/22)

If all or part of a timber sale was prepared by a private contractor, the contractor and that contractor's company are not permitted to bid on the timber sale. A person must be 18 years of age or older to purchase timber. Permanent employees of the Department of Natural Resources or members of their immediate household may not bid. Former employees, in the permanent or seasonal class, may not bid until 3 months after the last day of active duty. Bids will not be accepted from individuals or companies appearing on the DNR/FRD No-Bid List. This list contains the names of purchasers who previously failed to execute a contract within 21-days or who have a history of poor performance.

3. Preparation of Sealed Bids (5/16)

Bid Forms may be completed online thru Michigan DNR Timber Sale Online Bidding (OLB) at www.michigan.gov/timberbidding or by completing the hardcopy Bid Form found in the Timber Sale Prospectus. Hardcopy Bid Forms shall be manually signed in ink. Registration in OLB is considered your 'signature' for all bids submitted thru that system. Bid prices must be entered for each species and product in the Bid Price column for all material subject to bidding and all fill-in blanks must be completed. If erasures or other changes appear on the hardcopy Bid Form, each erasure or change must be initialed by the person signing the bid.

4. Submission of Sealed Bids (5/16)

Bid forms may be obtained from the Unit Manager or thru OLB. Bids may be submitted hardcopy or thru OLB. All hardcopy bids must be submitted on the bid form and in an envelope clearly identified as described in this section. NOTE: Only one bid form per bid envelope. Sealed bids must be submitted to the Unit office designated in the prospectus and must be submitted at or prior to the time established in the prospectus. The envelope should show on the outside (a) the sale name or number and (b) the date and time of bid opening, as shown in the prospectus. Bids received after the time specified in the sale prospectus are late bids and will be rejected.

It is possible for a bidder to submit multiple bids on a single sale. For example, a bid may be submitted hardcopy and a bid may be submitted thru OLB. Or, two bidders from the same company could both submit bids on the same sale. If this were to happen, the State would accept all bids received and award the contract accordingly. All bidding and contractual requirements would apply to all bids received.

5. Public Opening of Sealed Bids (7/16)

If conditions permit, the sealed bids will be publicly opened and posted at the time and place set in the prospectus.

If a bidder, present at a bid opening, has submitted bids on more than one sale, that bidder may withdraw their unopened bid envelopes or announce the withdrawal of their online bid after being declared the successful bidder on one sale.

6. Award of Contract (1/11)

Award of the contract will be made to the Bidder whose bid, conforming to the prospectus, is most advantageous to the State of Michigan on the basis of total value at rates bid for the estimated quantities. The State reserves the right to reject any bid or waive any minor irregularity in bids received. A written award mailed (or otherwise furnished) to the successful Bidder shall be deemed to result in a binding contract without further action by either party.

7. Down Payment (1/11)

The Bidder to whom award is made must make a down payment within 21 days of the sale award. The amount of the down payment will be calculated as shown in the Bond and Payment Schedule of this prospectus. Only cash may be used to meet this requirement.

8. Performance Security (1/11)

As guarantee of faithful performance, a cash bond, certificate of deposit, surety bond or irrevocable letter of credit (LOC) is required within 21 days of the sale award. The amount of the performance security is shown in the Bond and

Payment Schedule of this prospectus. If an LOC or surety is used, the coverage must extend for at least 6 months beyond the contract expiration.

9. Worker's Compensation (10/22)

Purchaser shall obtain worker's compensation insurance to cover claims under Michigan's Worker's Disability Compensation Act of 1969 or similar employee benefit act of any other state applicable to an employee. Verification of Worker's Disability Compensation Act Compliance must be completed and submitted within 21 days of contract award and prior to the issuance of the timber sale contract. In addition, if applicable, Notice of Exclusion or Certificate of Insurance must also be submitted.

10. Timber Sale Contract (10/22)

Additional conditions and requirements common to all timber sales are listed on the timber sale contract (R4031) and are available on line at www.michigan.gov/timber. Contact the Unit Manager for additional information or a sample contract. Within 21 days of the date of the award letter, the bidder must sign the contract and provide the required down payment, performance security, and verification of worker's disability compensation. The down payment and performance security shall be in accordance with the provisions of the timber sale contract, in the sums stated in this prospectus. If these actions are not taken, then the Bidder, the Bidder's corporation, and the corporation's principals may not be permitted to bid on State timber sales for a period of 3 months after the first offense, 6 months after the second offense, and 1 year after the third offense. An offense will only be counted against the Bidder for 5 years. In addition, the Bidder certifies that if awarded this contract, the Bidder will complete the timber sale contract in accordance with its terms and any modifications thereof including requirements to purchase, cut, and remove the included timber by the expiration date.

Payment Unit values in the State Forest Timber Sale Contract are calculated based on the advertised value of the Payment Unit as a percentage of the total advertised value of the contract. The advertised value of each Payment Unit is given in the Description of Timber by Payment Unit table on the Timber Sale Information page. For example, if the value of Payment Unit 1 is advertised as \$1,500 and the total Timber Sale value is advertised as \$10,000, the contract price for Payment Unit 1 will be 15% of the total bid price ($\$1,500/\$10,000 * 100$).

11. Disclaimer of Estimates and Bidder's Warranty of Inspection (10/22)

Before submitting this bid, the Bidder is advised and cautioned to inspect the sale area, review the requirements of the sale contract, and take other steps as may be reasonably necessary to ascertain the location, estimated volumes, construction estimates, and operating costs of the proposed sale. Failure to do so will not relieve the Bidder from responsibility for completing the contract.

The Bidder warrants that this bid is submitted solely on the basis of the Bidder's examination and inspection of the quality and quantity of the timber offered for sale and the Bidder's opinion of the value thereof and the costs of recovery. No reliance should be placed on the State of Michigan's estimates of timber quality, quantity or costs of recovery. Bidder further acknowledges that the State of Michigan: (i) expressly disclaims any warranty of fitness of timber for any purpose; (ii) offers this timber as is without any warranty of quality (merchantability) or quantity and (iii) expressly disclaims any warranty as to the quantity or quality of timber sold.

12. Certification and Chain-of-Custody (10/22)

Unless otherwise indicated in the contract under section 7 – Other Conditions of the Sale Specific Conditions & Requirements, the area encompassed by this timber sale is certified to the standards of the Forest Stewardship Council (FSC) - Certificate #SCS-FM/COC-00090N and the Sustainable Forestry Initiative (SFI) - Certificate #NSF-SFIS-5Y031-SF5. Forest products from this sale may be delivered to the mill as "FSC 100% and / or SFI certified" as long as the contractor hauling the forest products is chain-of-custody (COC) certified or covered under a COC certificate from the destination mill. The purchaser is responsible for maintaining COC after leaving the sale area.

13. Good Neighbor Authority (GNA) Requirements (10/22)

If the name of this timber sales contains the acronym GNA, it is authorized by the Good Neighbor Authority (GNA) and covered by various agreements between the U.S. Forest Service and the State. The timber sale occurs on federal land and the following conditions apply:

GNA contracts on US Forest Service land will not be awarded to purchasers on the Federal list of excluded parties. The System for Award Management (SAM) will be checked for active excluded parties prior to award of contract. In

addition, the Bidder to whom award is made must complete an Assurance Regarding Felony Conviction or Tax Delinquent Status for Corporate Applicants (AD-3031).

14. Good Neighbor Authority (GNA) Requirements, con't (10/22)

Bidder certifies, by signing this bid form, that to the best of Bidder's knowledge that the following representations are accurate and complete.

- a. That the Bidder and its principals are not presently debarred, suspended, proposed for debarment, declared ineligible, or voluntary excluded from timber sales (covered transactions) by any Federal department or agency.
- b. That the Bidder and its principals have not within a 3-year period preceding this bid been convicted of or had a civil judgment rendered against them for commission of fraud or a criminal offense in connection with obtaining , attempting to obtain, or performing a public (Federal, State, or local) transaction or contract under a public transaction; violation of Federal or State antitrust statutes or commission of embezzlement, theft, forgery, bribery, falsification or destruction of records, making false statements, or receiving stolen property.
- c. That the Bidder and its principals are not presently indicted for or otherwise criminally or civilly charged by a governmental entity (Federal, State, or local) with commission of any of the offenses enumerated in paragraph b of this certification.
- d. That the Bidder and its principals have not within a 3-year period preceding this bid had one or more public transactions (Federal, State, or local) terminated for breach or default of a timber or forest product contract.

Bidders that cannot certify this requirement, in whole or in part, shall submit an explanation with their bid.

Scott Bowen
Director

TIMBER SALE INFORMATION

61 Fish Creek (73-003-24)

T18N, R02E, SEC. 16; T18N, R02E, SEC. 17; T18N, R02E, SEC. 20; T18N, R02E, SEC. 8; T18N, R02E, SEC. 9.
Gladwin County (Advertised Price \$240,120.70)

SALE NOTE: Access to Payment Units 4-6 and 8-9 is through a gate that must be locked at the end of each workday. The established creek crossing behind the gate will need gravel to fortify the crossing (at least 10 cubic yards). The access route will use the hiking trail and must be kept passable. Trees cleared to make the access route can be bought at the contract price after being scaled. Access to Payment Units 8 and 9 requires a stream crossing permit that has been obtained by the DNR. It is valid till June 17, 2029. Many units have seasonal wet ground so rutting could become a problem so care must be taken to avoid this. The southern portion of Payment Unit 8 will need to be hauled out through Payment Units 10 and 11.

A recreation site such as a trail, pathway, or campground is within the sale area or the vicinity. Certain restrictions/specifications may be applicable including time restrictions. Access may be through private or other public land.

A timber sale contract for this lump sum, sealed bid timber sale will be awarded to the responsible bidder offering the highest sealed bid price. All units of volume listed below were estimated using the Inventory Manager computer program and the new Michigan taper model. Bids must be at or above the following advertised price for each product and species:

<u>PRODUCTS & SPECIES</u>	<u>ESTIMATED UNITS*</u>		<u>ADVERTISED PRICE</u>
Sawtimber			
Black Cherry	17.0	MBF	\$ 152.00 / MBF
Black/Red (Hybrid) Oak	351.0	MBF	\$ 180.00 / MBF
Jack Pine	11.3	MBF	\$ 51.00 / MBF
Mixed Aspen	312.0	MBF	\$ 77.00 / MBF
Red Maple	139.8	MBF	\$ 60.00 / MBF
White Oak	66.5	MBF	\$ 109.00 / MBF
White Pine	45.7	MBF	\$ 60.00 / MBF
Pulpwood			
Jack Pine	82	Cords	\$ 11.90 / Cord
Mixed Aspen	2,212	Cords	\$ 26.30 / Cord
Mixed Hardwood	434	Cords	\$ 20.85 / Cord
Mixed Oak	997	Cords	\$ 23.15 / Cord
Red Maple	1,601	Cords	\$ 20.85 / Cord
Red Pine	11	Cords	\$ 47.00 / Cord
Tamarack	38	Cords	\$ 8.40 / Cord
White Pine	224	Cords	\$ 26.25 / Cord

* The total volume is statistically estimated within plus (+) or minus (-) 9.27 percent. There are an estimated 7,814 cords on this timber sale, plus or minus 725 cords at the 95% confidence level. The estimated units are final and not subject to adjustment. Prospective bidders are urged to examine this timber and to make their own estimates of quantity and quality.

BOND AND PAYMENT SCHEDULE:

1. A bond in the amount of \$24,012.00 to insure faithful performance of the conditions of the contract will be deposited by the successful bidder within 21 days of the sale award.
2. Cutting in any sale or unit without the required advance payment would be considered a trespass.
3. Total payment must be paid in advance or according to the following schedule:
 - (a) Ten percent (10%) of the sale value must be paid within 21 days of the sale award.
 - (b) The 10% down payment will be credited towards the first unit cut.

(c) Payment for each of the following units must be made before cutting begins in that unit:

PAYMENT UNIT NUMBER	PERCENT OF TOTAL SALE VALUE
01	3.2%
02	8.9%
03	9.4%
04	2.2%
05	7.0%
06	10.5%
07	7.9%
08	30.0%
09	4.5%
10	10.1%
11	6.3%

4. If no cutting takes place, the 10% down payment will not be refunded.

5. Operations on the contract issued will terminate on 03/31/2029.

SALE STATISTICS

Volumes were calculated in cubic feet using the Michigan taper model. Cubic foot volume includes all wood inside bark for the product indicated. For display purposes, cubic feet were converted to cords and MBF using a simple conversion factor, e.g. 79 cubic feet per cord and 185 cubic feet per MBF. The cubic foot volumes are precise; the cords and MBF volumes are not. Cubic foot volume cannot be directly converted to cords or boards with precision.

SALE VOLUMES

The total estimated sale volume may not equal the sum of the species/products due to the nature of statistical calculations associated with double sampling methodology.

VOLUME			STATISTICAL RANGE IN CORDS	
TOTAL CUBIC FEET	TOTAL CORDS	PERCENT ERROR	MINIMUM	MAXIMUM
617,334	7,814	9.27%	7,089	8,540

VDU VOLUMES

A VDU is a Volume Determination Unit. Volumes and their associated statistics are calculated at the VDU level and summarized to the sale level. There is often a one to one relationship between a VDU and a Payment Unit, but not always, depending on the cruise design. Refer to the VDU TO PAYMENT UNIT table.

	VOLUME			RANGE IN CORDS	
VDU	TOTAL CUBIC FEET	TOTAL CORDS	PERCENT ERROR	MINIMUM	MAXIMUM
5	116,860	1,479	23.97%	1,125	1,834
7	58,917	746	31.75%	509	983
9	39,510	500	33.46%	333	667
148	17,259	218	31.52%	150	287
160	179,199	2,268	17.14%	1,880	2,657
172	15,086	191	49.10%	97	285
174	45,314	574	21.87%	448	699
177	24,387	309	39.04%	188	429
218	48,753	617	39.96%	371	864
222	72,051	912	31.44%	625	1,199
TOTAL:	617,334	7,814		5,725	9,904

VDU TO PAYMENT UNIT

When a VDU is associated with more than one Payment Unit (PU), the VDU volumes are assigned to the PU based on acres of the VDU within the PU.

VDU	VDU ACRES	PU	PU ACRES
5	48.4	2	23.5
		3	24.9
7	36.5	7	36.5
9	15.7	5	15.7
148	14.9	1	14.9
160	95.7	8	95.7
172	14.3	4	14.3
174	39.1	6	39.1
177	14.3	9	14.3
218	21.3	11	21.3
222	24.6	10	24.6
TOTAL:	324.8		324.8

DESCRIPTION OF TIMBER BY PAYMENT UNIT (PU)

PU	MARKET GROUP	PRODUCT	QUANTITY	UNIT	ACRES	ADVERTISE PRICE
1	Black/Red (Hybrid	Sawtimber	18.1	MBF	14.9	\$7,662.30
	Mixed Aspen		8.2	MBF		
	<i>B. T. Aspen</i>		8.2	<i>MBF</i>		
	Red Maple		14.9	MBF		
	White Oak		1.7	MBF		
	Mixed Aspen	Pulpwood	12	Cords		
	<i>B. T. Aspen</i>		12	<i>Cords</i>		
	Mixed Hardwood		2	Cords		
	<i>Paper Birch</i>		2	<i>Cords</i>		
	Mixed Oak		73	Cords		
	<i>/Red (Hybrid) Oak</i>		69	<i>Cords</i>		
	<i>White Oak</i>		4	<i>Cords</i>		
	Red Maple		31	Cords		
2	Black/Red (Hybrid	Sawtimber	27.3	MBF	23.5	\$21,253.95
	Mixed Aspen		51.9	MBF		
	<i>B. T. Aspen</i>		23.3	<i>MBF</i>		
	<i>Quaking Aspen</i>		28.6	<i>MBF</i>		
	Red Maple		11.6	MBF		
	White Oak		1.9	MBF		
	Mixed Aspen	Pulpwood	200	Cords		
	<i>B. T. Aspen</i>		93	<i>Cords</i>		
	<i>Quaking Aspen</i>		107	<i>Cords</i>		
	Mixed Hardwood		53	Cords		
	<i>Paper Birch</i>	<i>Sawtimber</i>	0.5	<i>MBF</i>		
	<i>Black Cherry</i>	<i>Pulpwood</i>	18	<i>Cords</i>		
	<i>Paper Birch</i>		34	<i>Cords</i>		
	Mixed Oak		56	Cords		
	<i>/Red (Hybrid) Oak</i>		55	<i>Cords</i>		
	<i>White Oak</i>		1	<i>Cords</i>		
	Red Maple		174	Cords		
	Tamarack		18	Cords		
	<i>Tamarack</i>	<i>Sawtimber</i>	0.5	<i>MBF</i>		
	<i>Tamarack</i>	<i>Pulpwood</i>	17	<i>Cords</i>		
3	Black/Red (Hybrid	Sawtimber	29.0	MBF	24.9	\$22,487.65
	Mixed Aspen		54.8	MBF		
	<i>B. T. Aspen</i>		24.6	<i>MBF</i>		
	<i>Quaking Aspen</i>		30.2	<i>MBF</i>		
	Red Maple		12.2	MBF		
	White Oak		2.1	MBF		
	Mixed Aspen	Pulpwood	211	Cords		
	<i>B. T. Aspen</i>		98	<i>Cords</i>		
	<i>Quaking Aspen</i>		113	<i>Cords</i>		
	Mixed Hardwood		56	Cords		
	<i>Paper Birch</i>	<i>Sawtimber</i>	0.6	<i>MBF</i>		
	<i>Black Cherry</i>	<i>Pulpwood</i>	19	<i>Cords</i>		
	<i>Paper Birch</i>		36	<i>Cords</i>		
	Mixed Oak		59	Cords		
	<i>/Red (Hybrid) Oak</i>		58	<i>Cords</i>		
	<i>White Oak</i>		1	<i>Cords</i>		
	Red Maple		184	Cords		
	Tamarack		20	Cords		
	<i>Tamarack</i>	<i>Sawtimber</i>	0.6	<i>MBF</i>		
	<i>Tamarack</i>	<i>Pulpwood</i>	19	<i>Cords</i>		
4	Black/Red (Hybrid	Sawtimber	5.7	MBF	14.3	\$5,244.65
	Mixed Aspen		3.5	MBF		
	<i>B. T. Aspen</i>		1.6	<i>MBF</i>		

DESCRIPTION OF TIMBER BY PAYMENT UNIT (PU), CON'T

PU	MARKET GROUP	PRODUCT	QUANTITY	UNIT	ACRES	ADVERTISE PRICE
4 con't	<i>Quaking Aspen</i>	<i>Sawtimber</i>	1.9	<i>MBF</i>		
	Red Maple	Pulpwood	33.1	MBF		
	White Oak		1.1	MBF		
	Mixed Aspen		2	Cords		
	<i>B. T. Aspen</i>		1	<i>Cords</i>		
	<i>Quaking Aspen</i>		1	<i>Cords</i>		
	Mixed Hardwood	<i>Sawtimber</i> <i>Pulpwood</i>	8	Cords		
	<i>Paper Birch</i>		2.7	<i>MBF</i>		
	<i>Paper Birch</i>		3	<i>Cords</i>		
	Mixed Oak		8	Cords		
	<i>/Red (Hybrid) Oak</i>		7	<i>Cords</i>		
	<i>White Oak</i>		1	<i>Cords</i>		
	Red Maple		69	Cords		
5	Black Cherry	Sawtimber	1.9	MBF	15.7	\$16,782.40
	Black/Red (Hybrid	Pulpwood	37.8	MBF		
	Mixed Aspen		2.3	MBF		
	<i>B. T. Aspen</i>		2.3	<i>MBF</i>		
	Red Maple		10.5	MBF		
	Mixed Aspen		145	Cords		
	<i>B. T. Aspen</i>		1	<i>Cords</i>		
	<i>Quaking Aspen</i>		144	<i>Cords</i>		
	Mixed Hardwood		19	Cords		
	<i>Black Cherry</i>		13	<i>Cords</i>		
	<i>Paper Birch</i>		6	<i>Cords</i>		
	Mixed Oak		82	Cords		
	<i>/Red (Hybrid) Oak</i>		78	<i>Cords</i>		
	<i>White Oak</i>		4	<i>Cords</i>		
	Red Maple		123	Cords		
	White Pine		8	Cords		
6	Black/Red (Hybrid	Sawtimber	90.5	MBF	39.1	\$25,296.55
	Mixed Aspen	Pulpwood	13.7	MBF		
	<i>B. T. Aspen</i>		4.9	<i>MBF</i>		
	<i>Quaking Aspen</i>		8.8	<i>MBF</i>		
	Red Maple		14.4	MBF		
	White Oak		5.1	MBF		
	Mixed Aspen		36	Cords		
	<i>B. T. Aspen</i>		32	<i>Cords</i>		
	<i>Quaking Aspen</i>		4	<i>Cords</i>		
	Mixed Hardwood		5	Cords		
	<i>Black Cherry</i>		5	<i>Cords</i>		
	Mixed Oak		171	Cords		
	<i>/Red (Hybrid) Oak</i>		157	<i>Cords</i>		
	<i>White Oak</i>		14	<i>Cords</i>		
	Red Maple		73	Cords		
7	Black/Red (Hybrid	Sawtimber	12.9	MBF	36.5	\$19,087.60
	Jack Pine	Pulpwood	11.3	MBF		
	Mixed Aspen		31.3	MBF		
	<i>B. T. Aspen</i>		17.1	<i>MBF</i>		
	<i>Quaking Aspen</i>		14.2	<i>MBF</i>		
	Red Maple		3.3	MBF		
	White Pine		5.4	MBF		
	Jack Pine		82	Cords		
	Mixed Aspen		195	Cords		
	<i>B. T. Aspen</i>		99	<i>Cords</i>		
	<i>Quaking Aspen</i>		96	<i>Cords</i>		
	Mixed Hardwood		73	Cords		

DESCRIPTION OF TIMBER BY PAYMENT UNIT (PU), CON'T

PU	MARKET GROUP	PRODUCT	QUANTITY	UNIT	ACRES	ADVERTISE PRICE
7 con't	<i>Black Cherry</i>	<i>Pulpwood</i>	42	<i>Cords</i>		
	<i>Paper Birch</i>		31	<i>Cords</i>		
	Mixed Oak		127	Cords		
	<i>/Red (Hybrid) Oak</i>		127	<i>Cords</i>		
	Red Maple		103	Cords		
	Red Pine		11	Cords		
	<i>Red Pine</i>	<i>Sawtimber</i>	4.5	<i>MBF</i>		
	<i>Red Pine</i>	<i>Pulpwood</i>	2	<i>Cords</i>		
	White Pine		1	Cords		
8	Black Cherry	Sawtimber	15.1	MBF	95.7	\$72,135.40
	Black/Red (Hybrid		96.2	MBF		
	Mixed Aspen		103.8	MBF		
	<i>B. T. Aspen</i>		76.5	<i>MBF</i>		
	<i>Quaking Aspen</i>		27.3	<i>MBF</i>		
	Red Maple		25.2	MBF		
	White Oak		37.7	MBF		
	White Pine		38.3	MBF		
	Mixed Aspen	Pulpwood	567	Cords		
	<i>B. T. Aspen</i>		256	<i>Cords</i>		
	<i>Quaking Aspen</i>		311	<i>Cords</i>		
	Mixed Hardwood		183	Cords		
	<i>Black Cherry</i>		159	<i>Cords</i>		
	<i>Paper Birch</i>		24	<i>Cords</i>		
	Mixed Oak		258	Cords		
	<i>/Red (Hybrid) Oak</i>		222	<i>Cords</i>		
	<i>White Oak</i>		36	<i>Cords</i>		
	Red Maple		317	Cords		
	White Pine		202	Cords		
9	Black/Red (Hybrid	Sawtimber	23.1	MBF	14.3	\$10,827.45
	Mixed Aspen		7.7	MBF		
	<i>B. T. Aspen</i>		7.7	<i>MBF</i>		
	Red Maple		10.4	MBF		
	White Oak		9.4	MBF		
	White Pine		2.0	MBF		
	Mixed Aspen	Pulpwood	33	Cords		
	<i>B. T. Aspen</i>		33	<i>Cords</i>		
	Mixed Hardwood		1	Cords		
	<i>Black Cherry</i>		1	<i>Cords</i>		
	Mixed Oak		104	Cords		
	<i>/Red (Hybrid) Oak</i>		84	<i>Cords</i>		
	<i>White Oak</i>		20	<i>Cords</i>		
	Red Maple		46	Cords		
	White Pine		2	Cords		
10	Black/Red (Hybrid	Sawtimber	9.3	MBF	24.6	\$24,168.95
	Mixed Aspen		18.7	MBF		
	<i>Quaking Aspen</i>		18.7	<i>MBF</i>		
	Red Maple		1.5	MBF		
	White Oak		7.5	MBF		
	Mixed Aspen	Pulpwood	509	Cords		
	<i>B. T. Aspen</i>		312	<i>Cords</i>		
	<i>Quaking Aspen</i>		197	<i>Cords</i>		
	Mixed Hardwood		4	Cords		
	<i>Black Cherry</i>		4	<i>Cords</i>		
	Mixed Oak		40	Cords		
	<i>/Red (Hybrid) Oak</i>		29	<i>Cords</i>		
	<i>White Oak</i>		11	<i>Cords</i>		

DESCRIPTION OF TIMBER BY PAYMENT UNIT (PU), CON'T

PU	MARKET GROUP	PRODUCT	QUANTITY	UNIT	ACRES	ADVERTISE PRICE		
10 con't	Red Maple	Pulpwood	262	Cords				
	White Pine		11	Cords				
11	Black/Red (Hybrid)	Sawtimber	1.1	MBF	21.3	\$15,173.80		
	Mixed Aspen		16.1	MBF				
	<i>Quaking Aspen</i>		16.1	<i>MBF</i>				
	Red Maple	Pulpwood	2.7	MBF				
	Mixed Aspen		302	Cords				
	<i>B. T. Aspen</i>		168	<i>Cords</i>				
	<i>Quaking Aspen</i>		134	<i>Cords</i>				
	Mixed Hardwood		30	Cords				
	<i>Paper Birch</i>		30	<i>Cords</i>				
	Mixed Oak		19	Cords				
	<i>/Red (Hybrid) Oak</i>		19	<i>Cords</i>				
	Red Maple		219	Cords				
TOTAL:			943.3	MBF				
TOTAL:			5,599	Cords				

Sale Specific Conditions & Requirements

Sale Name: 61 Fish Creek

Sale Number: 73-003-24 Seq#: 2

1 - Sale Area

1.2 - Boundaries

1.2.1 - Painted Boundaries (9/19)

The sale boundary and Payment Unit boundaries are marked and identified by blue, red and yellow paint. Exterior sale boundary lines against private property are marked with blue paint. Exterior sale boundary lines against state are marked with red paint. Interior Payment Unit boundaries are marked with yellow paint. Retention patches are marked with red paint; no harvesting activities may occur within these areas. Yellow painted trees designating an interior Payment Unit boundary are only to be cut when all surrounding Payment Units have been paid, unless they are painted green above and below stump height.

2 - Timber Specifications

2.1 - Included Timber

2.1.1 - Clearcut Unit(s) with Unmerchantable Trees (6/14)

Within Payment Unit(s) 2-3, 5, 7-8, and 10-11, cut all trees that are two (2) inches or more at DBH, except do not cut trees marked with green paint above and below stump height.

2.1.3 - Cut Tree Marked Unit(s) (12/08)

Within Payment Unit(s) 4, all trees are designated for cutting when marked with orange paint above and below stump height, regardless of merchantability.

2.1.7 - Leave Tree Marked Unit(s) (6/14)

Within Payment Unit(s) 1, 6, and 9, cut all trees that are two (2) inches or more at DBH, except do not cut trees marked with green paint above and below stump height. In addition, the following specifications apply:

- Within Payment Units 1 and 9, do not cut oak that are four (4) inches or less at DBH.

- Within Payment Unit 6, do not cut oak that are six (6) inches or less at DBH.

2.2 - Utilization

2.2.9 - No Chipping Permitted (12/08)

Within Payment Unit(s) 1-11, all wood must be removed by whole tree, tree segment, or roundwood. No chipping is permitted.

3 - Payments

3.3 - Pre-measured Sales

3.3.4 - Dividing Payment Units (7/14)

Payment Unit(s) 8 may be divided at the request of the Purchaser and upon approval of the Unit Manager. Dividing Payment Units is a contract modification which requires a Timber Sale Contract Amendment. There will only be a one-time division of the Payment Unit.

3.4 - Damaged Timber

3.4.1 - Damaged timber (7/16)

General Condition and Requirement 3.4 Damaged Timber, defines liquidated damages for undesignated live merchantable trees which are cut or injured. In addition, extreme care should be taken to avoid damage to tree seedlings and saplings.

Within Payment Units 1, 4, 6, and 9, if more than 25% of the tree seedlings or saplings (1/4" to 4.5" DBH) within a specified portion of the Sale Area are damaged, liquidated damages will be assessed at \$500 per acre for all acreage within that specified portion of the Sale Area that was damaged.

No damage is acceptable to undesignated live merchantable trees. Within the Sale Area, if more than 5% of trees (> 4.5" DBH) within a specified area of the sale are damaged, liquidated damages will be assessed for all trees damaged. Rates will be in accordance with General Condition and Requirement 3.4 Damaged Timber.

4 - Transportation

4.1 - Construction

4.1.1 - Stream crossings, general (3/11)

All stream crossing structures will be temporary and therefore, shall be provided by the Purchaser, and must be removed upon completion of the sale. All permits for stream crossings will be provided by the DNR.

4.1.4 - Timber Removed for Construction (3/23)

Trees cut or damaged in the process of pre-approved road, landing, or skid trail construction will be decked in an area separate from other Designated Timber and not removed until measured by the Sale Administrator. Payment will be made at contract prices or average prices, if not on the contract.

4.1.8 - Road Work (1) (8/07)

The following road work is required: the placement of gravel to reenforce the existing culvert crossing of Fish Creek. In addition, a portion of the Midland to Mackinac hiking trail will need to be cleared and widen to allow logging access to Payment Units 8 and 9. The trail will need to be keep clear of logging slash and smoothed out to allow foot traffic.

4.1.11 - Permits (2/12)

The Michigan DNR will secure any necessary creek crossing permits that may be required. The permit will require the placement of crane mat to make a free span bridge for logging equipment. This will be needed to harvest Payment Units 8 and 9.

4.2 - Maintenance

4.2.5 - Two Wheel Drive Condition (2/04)

All existing trail roads on and adjacent to the Sale Area must be passable by two-wheel drive traffic for the duration of the sale.

4.4 - Access

4.4.2 - Alternate route on private property (2/04)

It is the Purchaser's responsibility to obtain access across private land for any routes other than the route shown on the Timber Sale Map.

4.4.3 - Access gate (12/08)

The access gate must be locked at the completion of each day unless otherwise approved by the Unit Manager or his/her representative.

5 - Operations

5.2 - Conduct of Operations

5.2.1 - Slash

5.2.1.8 - Slash Height (12/08)

No slash or tree tops may exceed 24 inches in height.

5.2.2 - Hazard Trees/Snags

5.2.2.1 - Den Trees (10/16)

Obvious hollow and/or den trees shall be protected and left standing unless they are a safety hazard.

5.2.3 - Operating Restrictions

5.2.3.5 - Oak Wilt Restriction (1/18)

Within Payment Unit(s) 1, 4, 6 and 9, unless changed by written agreement, cutting, skidding, hauling within the sale and brushing of access roads to the sale are not permitted during the period of April 15 to July 15. Operations may be allowed if specific steps are taken to prevent damaging uncut oak during the high-risk period. Those steps may include completing

all road brushing before April 15 and clearing a tree-length buffer along uncut oak cover before April 15. This is necessary to reduce the spread of oak wilt. For more information, contact the Unit Manager or his/her representative.

5.2.4 - Dead and Down Creation

5.2.4.4 - Dead and Down Creation, Grouse (6/18)

To encourage grouse and other wildlife, in Payment Unit(s) 2-3, 5, 7-8, and 10-11, leave one 12-inch or larger diameter whole tree on the ground for every 3 acres. Trees should be scattered throughout the sale and at least two chains from any roads, two-tracks, or trails open to vehicles, or positioned per the Sale Administrator's instructions. Stumps must be at least 3 feet tall.

5.2.22 - Operating Caution

5.2.22.1 - Operating Caution (6/11)

It is recommended, but not required, that within Payment Unit(s) 2-5, 7, and 11, cutting, skidding, and hauling occur during dry summer or frozen winter conditions. The reason for the recommendation is because soils are seasonal wet and prone to rutting.

5.2.40 - Pathway Protection (10/10)

The Midland to Mackinac is a hiking trail and is shown on the Timber Sale Map. The pathway needs to be maintained with a 20-foot-wide slash, debris, and rut free zone daily, using the pathway as the centerline.

5.4 - Soil Protection

5.4.1 - Rutting Restriction, General (7/16)

Operations are to cease immediately if equipment and weather conditions result in rutting of roads and/or skid trails which is 12 inches or greater in depth and 50 feet in length. The Unit Manager or his/her representative may restrict hauling and/or skidding if ruts exceed the specified depth. With the Unit Manager or his/her representative's approval, the Purchaser may return to the area when the risk of rutting has decreased.

6 - Safety and Fire Prevention

6.2 - Signing

6.2.3 - Recreational Trail Posting (10/20)

The Purchaser is responsible for posting and maintaining caution signs on the hiking trail prior to beginning operations. The trail must be posted at appropriate distances from the Sale Area to warn of logging activity and truck traffic at both ends of the trail. Signs must be removed when harvest operations are suspended or completed. The Purchaser will provide these signs.



TIMBER SALE MAP

This information provided by authority of Part 525, 1994 PA 451, as amended.

Sale Number

73-003-24

Date

07/08/2024

Forest Management Unit

County

Mapped By: Steven Nyhoff

Scale

Page

Of

Gladwin Management Unit

Gladwin

Cruised By: Steven Nyhoff

1:15,840

1

2

Township
18N

Range
02E

Section(s) and
Subdivision(s) S8 SESW; S9 SWSW; S16 NWNW, S1/2NW, NWSW; S17 NW, NE, SW, SE; S20 E1/2NW

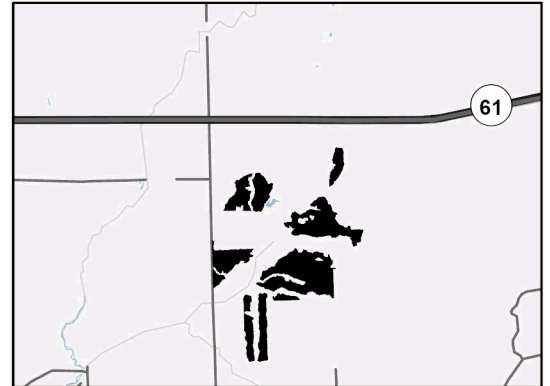
Cover Type

A = Aspen	J = Jack Pine	O = Oak	U = Upland Brush
B = Paper Birch	K = Rock	P = Lowland Poplar	UM = Upland Mix Forest
C = Cedar	L = Lowland Brush	Q = Mixed Swamp Conifer	V = Bog or Marsh
D = Treed Bog	LM = Lowland Mix Forest	R = Red Pine	W = White Pine
E = Swamp Hardwoods	M = Maple, Beech, Birch	S = Black Spruce	X = Non Stocked
F = Spruce/Fir	MC = Mixed Conifer	T = Tamarack	Y = Sand
G = Grass	MD = Mixed Deciduous	Z = Water	
H = Hemlock	N = Marsh		

Density

0 = Non Stocked	5 = Pole Timber Medium
1 = Seedling Sapling Poor	6 = Pole Timber Well
2 = Seedling Sapling Medium	7 = Saw Timber Poor
3 = Seedling Sapling Well	8 = Saw Timber Medium
4 = Pole Timber Poor	9 = Saw Timber Well

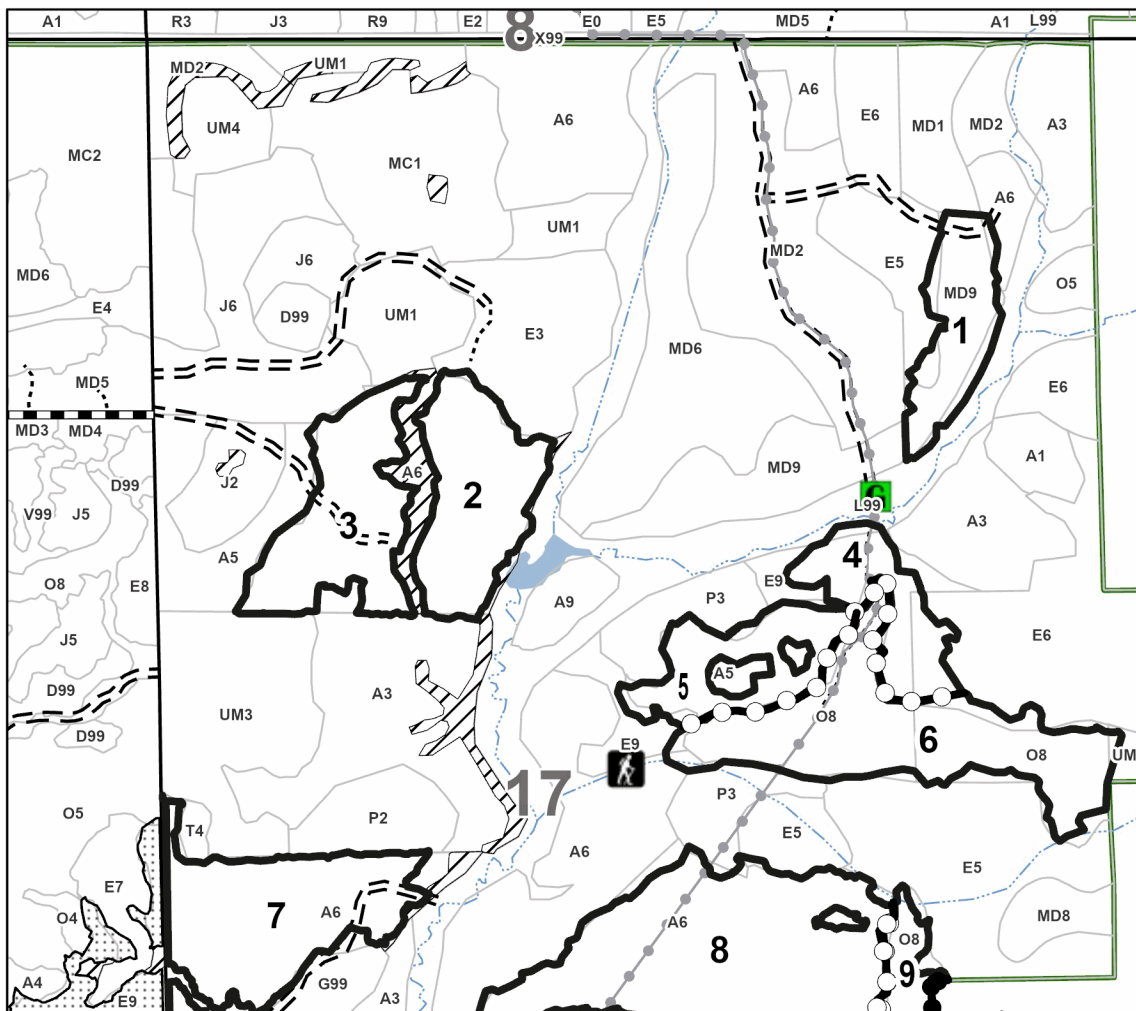
Locator Map 1:100,000



Payment Unit Number	Acres	Payment Unit Number	Acres
1	14.9	7	36.5
2	23.5	8	95.7
3	24.9	9	14.3
4	14.3	10	24.6
5	15.7	11	21.3
6	39.1		

**61 Fish Creek
324.8 Acres**

0 0.25 0.5 1 Miles



Legend

- Against State (Red)
- Private Line (Blue)
- Payment Unit (Yellow)
- Forest Access Route
- Administrative Access Only
- Paved Road
- Government Gravel/Dirt
- Recreational Trails
- G** Gate

Use QR Code to
open Map in App





TIMBER SALE MAP

This information provided by authority of Part 525, 1994 PA 451, as amended.

Sale Number
73-003-24

Date
07/08/2024

Forest Management Unit		County	Mapped By: Steven Nyhoff	Scale	Page	Of
Gladwin Management Unit		Gladwin	Cruised By: Steven Nyhoff	1:15,840	2	2
Township	Range	Section(s) and Subdivision(s) S8 SESW; S9 SWSW; S16 NWNW, S1/2NW, NWSW; S17 NW, NE, SW, SE; S20 E1/2NW				
18N	02E					

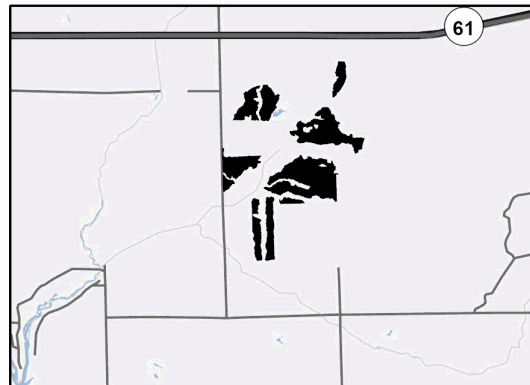
Cover Type

A = Aspen	J = Jack Pine	O = Oak	U = Upland Brush
B = Paper Birch	K = Rock	P = Lowland Poplar	UM = Upland Mix Forest
C = Cedar	L = Lowland Brush	Q = Mixed Swamp Conifer	V = Bog or Marsh
D = Treed Bog	LM = Lowland Mix Forest	R = Red Pine	W = White Pine
E = Swamp Hardwoods	M = Maple, Beech, Birch	S = Black Spruce	X = Non Stocked
F = Spruce/Fir	MC = Mixed Conifer	T = Tamarack	Y = Sand
G = Grass	MD = Mixed Deciduous	Z = Water	
H = Hemlock	N = Marsh		

Density

0 = Non Stocked	5 = Pole Timber Medium
1 = Seedling Sapling Poor	6 = Pole Timber Well
2 = Seedling Sapling Medium	7 = Saw Timber Poor
3 = Seedling Sapling Well	8 = Saw Timber Medium
4 = Pole Timber Poor	9 = Saw Timber Well

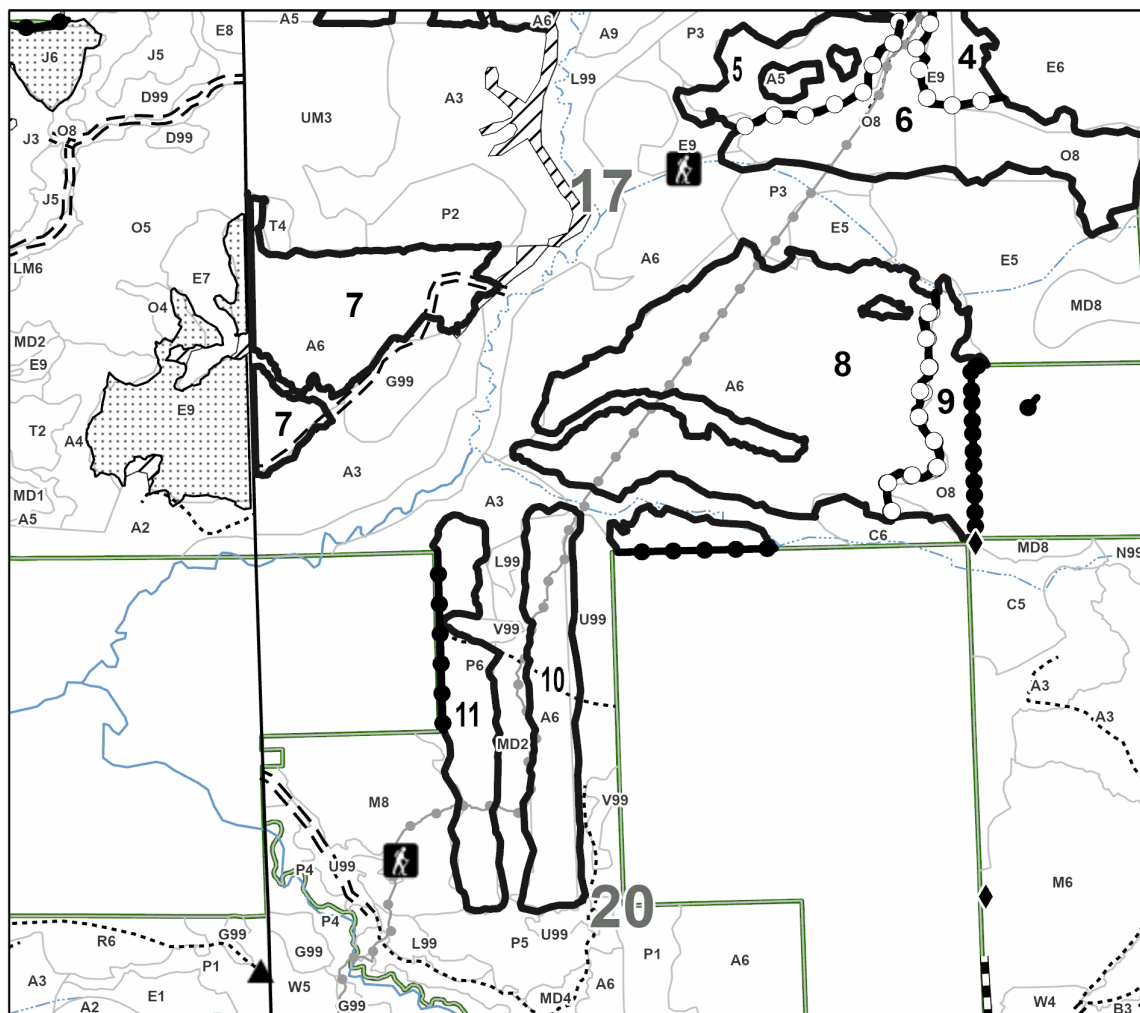
Locator Map 1:100,000



Payment Unit Number	Acres	Payment Unit Number	Acres
1	14.9	7	36.5
2	23.5	8	95.7
3	24.9	9	14.3
4	14.3	10	24.6
5	15.7	11	21.3
6	39.1		

61 Fish Creek
324.8 Acres

0 0.28 0.55 1.1 Miles



Legend

- Against State (Red)
- Private Line (Blue)
- Payment Unit (Yellow)
- - - Forest Access Route
- Administrative Access Only
- Paved Road
- - - Government Gravel/Dirt
- Recreational Trails
- ◆ Field Grade Corner
- ▲ Berm

Use QR Code to
open Map in App



TIMBER SALE INFORMATION

Turnpike Red Pine (73-004-24)
T20N, R05W, SEC. 4.
Clare County (Advertised Price \$140,650.30)

A timber sale contract for this lump sum, sealed bid timber sale will be awarded to the responsible bidder offering the highest sealed bid price. All units of volume listed below were estimated using the Inventory Manager computer program and the new Michigan taper model. Bids must be at or above the following advertised price for each product and species:

<u>PRODUCTS & SPECIES</u>	<u>ESTIMATED UNITS*</u>	<u>ADVERTISED PRICE</u>
Sawtimber		
Red Pine	1,111.1 MBF	\$ 103.00 / MBF
Pulpwood		
B. T. Aspen	2 Cords	\$ 26.30 / Cord
Jack Pine	8 Cords	\$ 11.90 / Cord
Mixed Hardwood	21 Cords	\$ 20.85 / Cord
Mixed Oak	49 Cords	\$ 23.15 / Cord
Red Pine	521 Cords	\$ 47.00 / Cord

* The total volume is statistically estimated within plus (+) or minus (-) 11.40 percent. There are an estimated 3,205 cords on this timber sale, plus or minus 366 cords at the 95% confidence level. The estimated units are final and not subject to adjustment. Prospective bidders are urged to examine this timber and to make their own estimates of quantity and quality.

BOND AND PAYMENT SCHEDULE:

- A bond in the amount of \$7,033.00 to insure faithful performance of the conditions of the contract will be deposited by the successful bidder within 21 days of the sale award.
- Cutting in any sale or unit without the required advance payment would be considered a trespass.
- Total payment must be paid in advance or according to the following schedule :
 - Ten percent (10%) of the sale value must be paid within 21 days of the sale award.
 - The 10% down payment will be credited towards the first unit cut.
 - Payment for each of the following units must be made before cutting begins in that unit:

PAYMENT UNIT NUMBER	PERCENT OF TOTAL SALE VALUE
01	50.4%
02	49.6%
- If no cutting takes place, the 10% down payment will not be refunded.
- Operations on the contract issued will terminate on 03/31/2028.

SALE STATISTICS

Volumes were calculated in cubic feet using the Michigan taper model. Cubic foot volume includes all wood inside bark for the product indicated. For display purposes, cubic feet were converted to cords and MBF using a simple conversion factor, e.g. 79 cubic feet per cord and 185 cubic feet per MBF. The cubic foot volumes are precise; the cords and MBF volumes are not. Cubic foot volume cannot be directly converted to cords or boards with precision.

SALE VOLUMES

The total estimated sale volume may not equal the sum of the species/products due to the nature of statistical calculations associated with double sampling methodology.

VOLUME		STATISTICAL RANGE IN CORDS		
TOTAL CUBIC FEET	TOTAL CORDS	PERCENT ERROR	MINIMUM	MAXIMUM
253,218	3,205	11.40%	2,840	3,571

VDU VOLUMES

A VDU is a Volume Determination Unit. Volumes and their associated statistics are calculated at the VDU level and summarized to the sale level. There is often a one to one relationship between a VDU and a Payment Unit, but not always, depending on the cruise design. Refer to the VDU TO PAYMENT UNIT table.

	VOLUME			RANGE IN CORDS	
VDU	TOTAL CUBIC FEET	TOTAL CORDS	PERCENT ERROR	MINIMUM	MAXIMUM
74	127,298	1,611	12.07%	1,417	1,806
101	125,920	1,594	19.67%	1,280	1,907
TOTAL:	253,218	3,205		2,697	3,713

VDU TO PAYMENT UNIT

When a VDU is associated with more than one Payment Unit (PU), the VDU volumes are assigned to the PU based on acres of the VDU within the PU.

VDU	VDU ACRES	PU	PU ACRES
74	57.0	2	57.0
101	39.2	1	39.2
TOTAL:	96.2		96.2

DESCRIPTION OF TIMBER BY PAYMENT UNIT (PU)

PU	MARKET GROUP	PRODUCT	QUANTITY	UNIT	ACRES	ADVERTISE PRICE
1	Red Pine	Sawtimber	547.9	MBF	39.2	\$70,897.70
	Jack Pine	Pulpwood	3	Cords		
	Mixed Oak		2	Cords		
	/Red (Hybrid) Oak		2	Cords		
	Red Pine		306	Cords		
2	Red Pine	Sawtimber	563.2	MBF	57.0	\$69,752.60
	B. T. Aspen	Pulpwood	2	Cords		
	Jack Pine		5	Cords		
	Mixed Hardwood		21	Cords		
	Black Cherry		7	Cords		
	Red Maple		14	Cords		
	Mixed Oak		47	Cords		
	/Red (Hybrid) Oak	Sawtimber	2.7	MBF		
	White Oak		4.8	MBF		
	/Red (Hybrid) Oak	Pulpwood	20	Cords		
	White Oak		12	Cords		
	Red Pine		215	Cords		
	TOTAL:			1,111.1		
TOTAL:			601	Cords		

Sale Specific Conditions & Requirements

Sale Name: Turnpike Red Pine

Sale Number: 73-004-24 Seq#: 1

1 - Sale Area

1.2 - Boundaries

1.2.1 - Painted Boundaries (9/19)

The sale boundary and Payment Unit boundaries are marked and identified by blue, red and yellow paint. Exterior sale boundary lines against private property are marked with blue paint. Exterior sale boundary lines against state are marked with red paint. Interior Payment Unit boundaries are marked with yellow paint. Retention patches are marked with red paint; no harvesting activities may occur within these areas. The painted boundary line trees are not Included Timber and are to be protected unless marked with orange paint. Yellow painted trees designating an interior Payment Unit boundary are only to be cut when all surrounding Payment Units have been paid.

2 - Timber Specifications

2.1 - Included Timber

2.1.1 - Clearcut Unit(s) with Unmerchantable Trees (6/14)

Within Payment Unit(s) 1, cut all trees that are two (2) inches or more at DBH.

2.1.5 - Overstory Removal Unit(s) (8/11)

Within Payment Unit(s) 2, all trees which meet minimum piece specifications in 2.2 Utilization, are designated for cutting.

2.1.15 - Hazard trees near roads (11/20)

Cut and remove all standing dead trees within 100 feet of the cleared portion of designated county roads. These trees may be utilized or must be scattered back into the Sale Area.

2.2 - Utilization

2.2.2 - Chipping required (2/18)

Payment Unit 1 must be chip harvested to facilitate future silvicultural activities. The Purchaser has the option to produce sawlogs or pulpwood bolts, but the remaining portion of the trees must be chipped and hauled. If market conditions limit the practicality of chipping, tops and slash must be arranged in a way that will not inhibit future planting operations, as directed by the Sale Administrator. A chipping exemption can be obtained if proposed operations are determined to be suitable for planting by reforestation staff. This exemption must be granted in writing. The requirement to retain approximately 1/6 to 1/3 of tree tops and limbs less than four inches in diameter is still applicable (G. C. & R. 2.2).

2.2.3 - Stump heights (4/07)

Stump heights within Payment Unit 1 shall not exceed 6 inches for all trees. This is in order to facilitate planting operations.

2.2.6 - Roundwood Operation Required (3/21)

The skidding of whole trees or tree segments with limbs attached is prohibited within Payment Unit 2. All products must be produced as roundwood and forwarded to existing roads or landing areas in final product length.

2.2.9 - No Chipping Permitted (12/08)

Within Payment Unit(s) 2, all wood must be removed by roundwood. No chipping is permitted.

3 - Payments

3.3 - Pre-measured Sales

3.3.4 - Dividing Payment Units (7/14)

Payment Unit(s) may be divided at the request of the Purchaser and upon approval of the Unit Manager. Dividing Payment Units is a contract modification which requires a Timber Sale Contract Amendment. There will be only one division per Payment Unit.

3.4 - Damaged Timber

3.4.1 - Damaged timber (7/16)

General Condition and Requirement 3.4 Damaged Timber, defines liquidated damages for undesignated live merchantable trees which are cut or injured. In addition, extreme care should be taken to avoid damage to tree seedlings and saplings.

Within Payment Unit 2, if more than 25% of the tree seedlings or saplings (1/4" to 4.5" DBH) within a specified portion of the Sale Area are damaged, liquidated damages will be assessed at \$500 per acre for all acreage within that specified portion of the Sale Area that was damaged.

4 - Transportation

4.1 - Construction

4.1.12 - No New Roads (1/12)

No new roads will be permitted in any Payment Unit. All operations are limited to existing roads. Skid trails only will be allowed.

5 - Operations

5.1 - Notification

5.1.3 - Well Heads and Natural Gas Pipelines (11/15)

The Purchaser is responsible for contacting the gas or pipeline company prior to operating equipment in the vicinity of well heads or natural gas pipelines.

5.2 - Conduct of Operations

5.2.3 - Operating Restrictions

5.2.3.4 - Oak Wilt Restriction, No Exceptions (1/18)

Within Payment Unit 2, cutting, skidding, hauling within the sale and brushing of access roads to the sale are not permitted during the period of April 15 to July 15. No exceptions will be granted. This is necessary to reduce the spread of oak wilt.

5.2.32 - Decking/Landing Restoration (9/13)

All decking and landing areas must have the surface area restored to a condition equal to or better than before. This is to ensure the proper regeneration of the stand. Wood debris, chips and "cookies" from trimmings must be removed or scattered away from landing and loading areas and may not be windrowed on the edge.

5.2.33 - Gas Well Revegetation (12/08)

In the event that the gas well is utilized for a landing, the site must be revegetated with a seeding mixture specified by the Unit Manager or his/her representative.

**TIMBER SALE MAP**

This information provided by authority of Part 525, 1994 PA 451, as amended.

Sale Number

73-004-24

Date

10/22/2024

Forest Management Unit

Gladwin Mgt Unit

County

Clare

Mapped By: Behrmann

Cruised By: Behrmann

Scale

1:10,000

Page

1

Of

1Township
20NRange
05WSection(s) and
Subdivision(s) Sec. 4 SW,SWSE;**Cover Type**

A = Aspen	J = Jack Pine	O = Oak	U = Upland Brush
B = Paper Birch	K = Rock	P = Lowland Poplar	UM = Upland Mix Forest
C = Cedar	L = Lowland Brush	Q = Mixed Swamp Conifer	V = Bog or Marsh
D = Treed Bog	LM = Lowland Mix Forest	R = Red Pine	W = White Pine
E = Swamp Hardwoods	M = Maple, Beech, Birch	S = Black Spruce	X = Non Stocked
F = Spruce/Fir	MC = Mixed Conifer	T = Tamarack	Y = Sand
G = Grass	MD = Mixed Deciduous	Z = Water	
H = Hemlock	N = Marsh		

Density

0 = Non Stocked	5 = Pole Timber Medium
1 = Seedling Sapling Poor	6 = Pole Timber Well
2 = Seedling Sapling Medium	7 = Saw Timber Poor
3 = Seedling Sapling Well	8 = Saw Timber Medium
4 = Pole Timber Poor	9 = Saw Timber Well

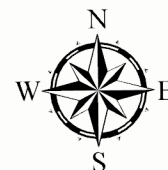
PU # Acres

1 39.2

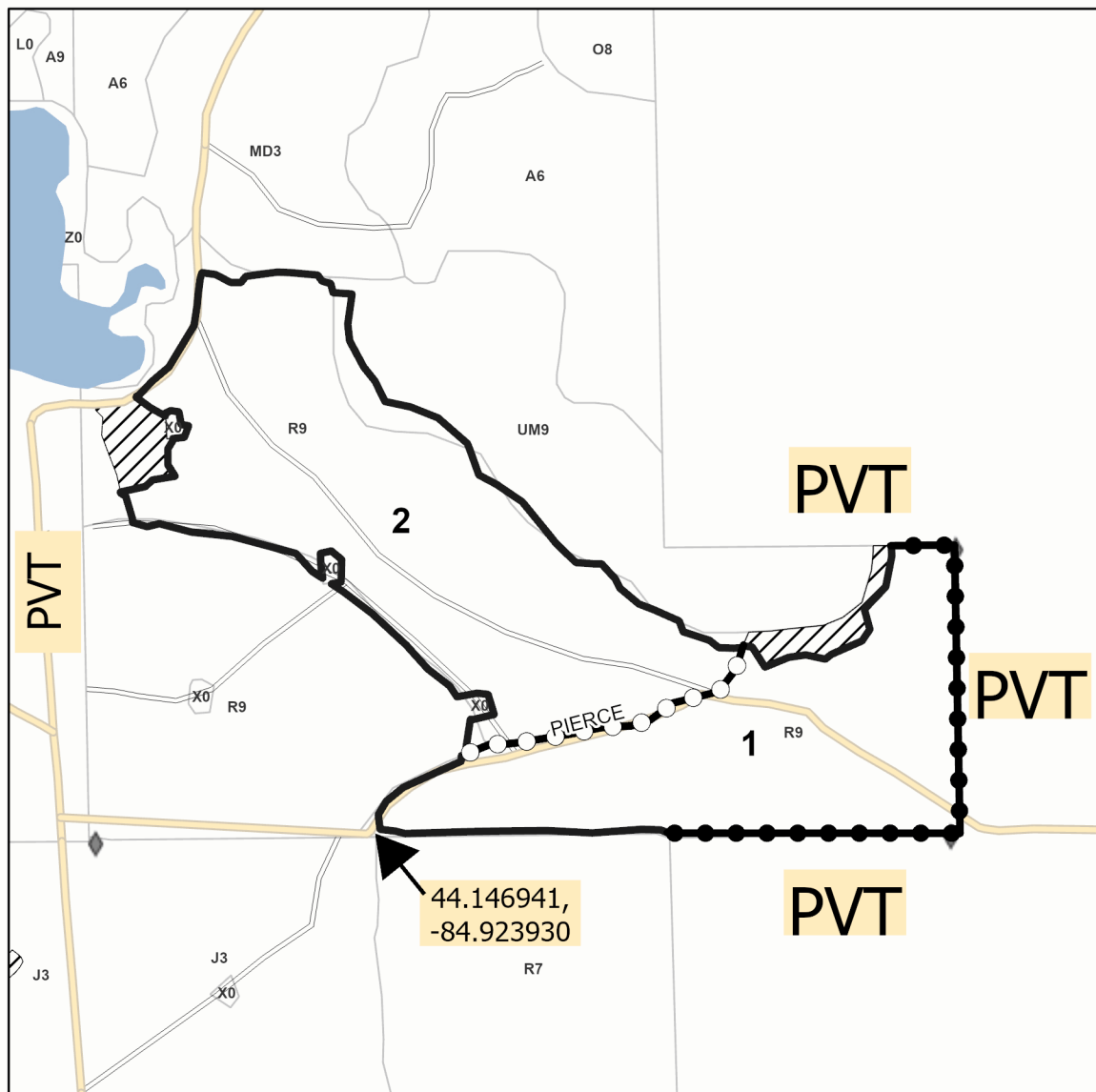
2 57

Turnpike Red Pine

96.2 Acres



0 0.13 0.25 0.5 Miles

**Legend**

	Against State (Red)
	Stand
	Retention Areas
	Payment Unit (Yellow)
	Private Line (Blue)
	Paved Road
	Gravel Road
	Private Road
	Primary Forest Road
	Secondary Forest Road
	Forest Access Route
	Administrative Access Only
	Non-DNR Road
	Survey Grade Corner

Use QR Code to open Map in App



TIMBER SALE INFORMATION

Mosquito Misery (73-013-24)
T17N, R02E, SEC. 20; T17N, R02E, SEC. 29.
Gladwin County (Advertised Price \$49,227.15)

SALE NOTE: A recreation site such as a trail, pathway, or campground is within the sale area or the vicinity. Certain restrictions/specifications may be applicable including time restrictions.

A timber sale contract for this lump sum, sealed bid timber sale will be awarded to the responsible bidder offering the highest sealed bid price. All units of volume listed below were estimated using the Inventory Manager computer program and the new Michigan taper model. Bids must be at or above the following advertised price for each product and species:

<u>PRODUCTS & SPECIES</u>	<u>ESTIMATED UNITS*</u>	<u>ADVERTISED PRICE</u>
Sawtimber		
Mixed Aspen	267.1 MBF	\$ 51.00 / MBF
Red Maple	77.8 MBF	\$ 40.00 / MBF
Swamp White Oak	12.3 MBF	\$ 69.00 / MBF
Pulpwood		
Mixed Aspen	1,235 Cords	\$ 17.55 / Cord
Paper Birch	53 Cords	\$ 26.50 / Cord
Red Maple	594 Cords	\$ 13.90 / Cord
Swamp White Oak	20 Cords	\$ 15.45 / Cord

* The total volume is statistically estimated within plus (+) or minus (-) 15.72 percent. There are an estimated 2,738 cords on this timber sale, plus or minus 431 cords at the 95% confidence level. The estimated units are final and not subject to adjustment. Prospective bidders are urged to examine this timber and to make their own estimates of quantity and quality.

BOND AND PAYMENT SCHEDULE:

- A bond in the amount of \$2,461.00 to insure faithful performance of the conditions of the contract will be deposited by the successful bidder within 21 days of the sale award.
- Cutting in any sale or unit without the required advance payment would be considered a trespass.
- Total payment must be paid in advance or according to the following schedule :
 - Ten percent (10%) of the sale value must be paid within 21 days of the sale award.
 - The 10% down payment will be credited towards the first unit cut.
 - Payment for each of the following units must be made before cutting begins in that unit:

PAYMENT UNIT NUMBER	PERCENT OF TOTAL SALE VALUE
01	35.0%
02	13.7%
03	2.3%
04	3.6%
05	38.0%
06	7.4%
- If no cutting takes place, the 10% down payment will not be refunded.
- Operations on the contract issued will terminate on 03/31/2029.

SALE STATISTICS

Volumes were calculated in cubic feet using the Michigan taper model. Cubic foot volume includes all wood inside bark for the product indicated. For display purposes, cubic feet were converted to cords and MBF using a simple conversion factor, e.g. 79 cubic feet per cord and 185 cubic feet per MBF. The cubic foot volumes are precise; the cords and MBF volumes are not. Cubic foot volume cannot be directly converted to cords or boards with precision.

SALE VOLUMES

The total estimated sale volume may not equal the sum of the species/products due to the nature of statistical calculations associated with double sampling methodology.

VOLUME			STATISTICAL RANGE IN CORDS	
TOTAL CUBIC FEET	TOTAL CORDS	PERCENT ERROR	MINIMUM	MAXIMUM
216,284	2,738	15.72%	2,307	3,168

VDU VOLUMES

A VDU is a Volume Determination Unit. Volumes and their associated statistics are calculated at the VDU level and summarized to the sale level. There is often a one to one relationship between a VDU and a Payment Unit, but not always, depending on the cruise design. Refer to the VDU TO PAYMENT UNIT table.

	VOLUME			RANGE IN CORDS	
VDU	TOTAL CUBIC FEET	TOTAL CORDS	PERCENT ERROR	MINIMUM	MAXIMUM
3	5,215	66	153.59%	0	167
66	79,617	1,008	30.34%	702	1,314
89	78,744	997	20.08%	797	1,197
168	14,972	190	63.41%	69	310
175	30,497	386	48.17%	200	572
176	7,239	92	92.38%	7	176
TOTAL:	216,284	2,738		1,775	3,736

VDU TO PAYMENT UNIT

When a VDU is associated with more than one Payment Unit (PU), the VDU volumes are assigned to the PU based on acres of the VDU within the PU.

VDU	VDU ACRES	PU	PU ACRES
TOTAL:			

DESCRIPTION OF TIMBER BY PAYMENT UNIT (PU)

PU	MARKET GROUP	PRODUCT	QUANTITY	UNIT	ACRES	ADVERTISE PRICE		
1	Mixed Aspen	Sawtimber	57.9	MBF	34.7	\$17,251.15		
	B. T. Aspen		22.4	MBF				
	Balsam Poplar		1.0	MBF				
	Quaking Aspen		34.5	MBF				
	Red Maple	Pulpwood	21.8	MBF				
	Mixed Aspen		517	Cords				
	B. T. Aspen		277	Cords				
	Balsam Poplar		4	Cords				
	Quaking Aspen		236	Cords				
	Paper Birch		9	Cords				
	Red Maple		296	Cords				
	Red Maple		296	Cords				
2	Mixed Aspen	Sawtimber	14.5	MBF	23.4	\$6,724.55		
	B. T. Aspen		14.5	MBF				
	Red Maple	Pulpwood	1.4	MBF				
	Mixed Aspen		247	Cords				
	B. T. Aspen		79	Cords				
	Quaking Aspen		168	Cords				
	Paper Birch		14	Cords				
	Red Maple		88	Cords				
	Red Maple		88	Cords				
3	Mixed Aspen	Pulpwood	61	Cords	3.6	\$1,140.05		
	B. T. Aspen		61	Cords				
	Red Maple		5	Cords				
	Red Maple		5	Cords				
4	Mixed Aspen	Sawtimber	22.4	MBF	6.0	\$1,761.15		
	B. T. Aspen		22.4	MBF				
	Mixed Aspen	Pulpwood	21	Cords				
	B. T. Aspen		21	Cords				
	Red Maple		18	Cords				
	Red Maple		18	Cords				
5	Mixed Aspen	Sawtimber	140.8	MBF	26.2	\$18,707.95		
	B. T. Aspen		140.8	MBF				
	Red Maple		54.6	MBF				
	Swamp White Oak		12.3	MBF				
	Mixed Aspen	Pulpwood	273	Cords				
	B. T. Aspen		273	Cords				
	Paper Birch		30	Cords				
	Red Maple		187	Cords				
	Silver Maple		Sawtimber	2.0			MBF	
	Red Maple			Pulpwood			179	Cords
	Silver Maple						4	Cords
	Swamp White Oak						20	Cords
	6		Mixed Aspen	Sawtimber			31.5	MBF
B. T. Aspen		31.5	MBF					
Mixed Aspen		Pulpwood	116	Cords				
B. T. Aspen			116	Cords				
TOTAL:			357.2	MBF				
TOTAL:			1,902	Cords				

Sale Specific Conditions & Requirements

Sale Name: Mosquito Misery

Sale Number: 73-013-24 Seq#: 2

1 - Sale Area

1.2 - Boundaries

1.2.1 - Painted Boundaries (9/19)

The sale boundary and Payment Unit boundaries are marked and identified by blue, red and yellow paint. Exterior sale boundary lines against private property are marked with blue paint. Exterior sale boundary lines against state are marked with red paint, with the exception of the western boundaries of Payment Units 1 and 5, which are unpainted and designated by Deer Road. Interior Payment Unit boundaries are marked with yellow paint. Retention patches are marked with red paint; no harvesting activities may occur within these areas. The painted boundary line trees are not Included Timber and are to be protected unless marked with orange paint. Yellow painted trees designating an interior Payment Unit boundary are only to be cut when all surrounding Payment Units have been paid.

2 - Timber Specifications

2.1 - Included Timber

2.1.1 - Clearcut Unit(s) with Unmerchantable Trees (6/14)

Within Payment Unit(s) 1-5, cut all trees that are two (2) inches or more at DBH, except do not cut any oak within Payment Units 1-4.

Within Payment Unit(s) 6, cut all aspen that are two (2) inches or more at DBH.

2.2 - Utilization

2.2.9 - No Chipping Permitted (12/08)

Within Payment Unit(s) 6, all wood must be removed by whole tree, tree segment, or roundwood. No chipping is permitted.

3 - Payments

3.3 - Pre-measured Sales

3.3.4 - Dividing Payment Units (7/14)

Payment Unit(s) may be divided at the request of the Purchaser and upon approval of the Unit Manager. Dividing Payment Units is a contract modification which requires a Timber Sale Contract Amendment.

3.4 - Damaged Timber

3.4.1 - Damaged timber (7/16)

General Condition and Requirement 3.4 Damaged Timber, defines liquidated damages for undesignated live merchantable trees which are cut or injured. No damage is acceptable to undesignated live merchantable trees.

Within the Sale Area, if more than 20% of trees (> 4.5" DBH) within a specified area of the sale are damaged, liquidated damages will be assessed for all trees damaged. Rates will be in accordance with General Condition and Requirement 3.4 Damaged Timber.

4 - Transportation

4.1 - Construction

4.1.6 - Road Construction (4/24)

Construction of new roads or improvements of existing roads shall be done in such a way as to minimize the environmental and visual impacts. Merchantable trees shall be cut and utilized unless otherwise directed. Non-merchantable trees shall be severed and laid flat on the ground. Slash shall be scattered, and not left in windrows and kept a minimum of 10 feet back from the road edge. Stumps shall be set upright, not left on edge, and be moved at least 10 feet away from the road edge. Disturbed soil shall be feathered into the woods and not left in berms or windrows.

4.1.7 - Road Closure (10/11)

All new roads built into the sale must be blocked to vehicle traffic upon completion of the sale. Overgrown roads that are reopened shall be considered new roads. In general, this will require constructing a four (4') foot high berm of stumps and logs covered with earth. Stumps and brush must be placed along the remainder of the trail. These roads must be rendered impassable to cars and trucks. Contact the Sale Administrator for specific details of design and placement.

5 - Operations

5.1 - Notification

5.1.3 - Well Heads and Natural Gas Pipelines (11/15)

The Purchaser is responsible for contacting the gas or pipeline company 30 days prior to operating equipment in the vicinity of well heads or natural gas pipelines.

5.2 - Conduct of Operations

5.2.3 - Operating Restrictions

5.2.3.4 - Oak Wilt Restriction, No Exceptions (1/18)

Within Payment Unit 6, cutting, skidding, hauling within the sale and brushing of access roads to the sale are not permitted during the period of April 15 to July 15. No exceptions will be granted. This is necessary to reduce the spread of oak wilt.

5.2.4 - Dead and Down Creation

5.2.4.4 - Dead and Down Creation, Grouse (6/18)

To encourage grouse and other wildlife, in Payment Unit(s) 1-2 and 4-5, leave one 12-inch or larger diameter whole tree on the ground for every 3 acres. Trees should be scattered throughout the sale and at least two chains from any roads, two-tracks, or trails open to vehicles, or positioned per the Sale Administrator's instructions. Stumps must be at least 3 feet tall.

5.2.22 - Operating Caution

5.2.22.1 - Operating Caution (6/11)

It is recommended, but not required, that within Payment Unit(s) 1-4, cutting, skidding, and hauling occur during dry summer or frozen winter conditions. The reason for the recommendation is because of saturated soils.

5.2.32 - Decking/Landing Restoration (9/13)

All decking and landing areas must have the surface area restored to a condition equal to or better than before. This is to ensure the proper regeneration of the stand. Wood debris, chips and "cookies" from trimmings must be removed or scattered away from landing and loading areas and may not be windrowed on the edge.

5.2.40 - Pathway Protection (10/10)

The Midland to Mackinac boy scout trail is a hiking trail located in Payment Unit 5 and is shown on the Timber Sale Map. Do not cut trees marked with blue paint. Skidding across the trail may only occur in locations approved by the Sale Administrator.

6 - Safety and Fire Prevention

6.2 - Signing

6.2.1 - Road Posting (10/20)

The Purchaser is responsible for posting and maintaining caution signs on Estey Road and Deer Road prior to beginning operations. The road must be posted at appropriate distances from the Sale Area to warn of logging activity and truck traffic. Signs must be removed when harvest operations are suspended or completed. The Purchaser will provide these signs.



TIMBER SALE MAP

This information provided by authority of Part 525, 1994 PA 451, as amended.

Sale Number

73-013-24

Date

10/24/2024

Forest Management Unit

Gladwin Mgt Unit

County

Gladwin

Mapped By: Behrmann

Cruised By: Behrmann

Scale

1:7,920

Page

1

Of

2

Township
17N

Range
02E

Section(s) and
Subdivision(s) Sec. 20 NW; Sec. 29 NWSW,S1/2SW,S1/2SE;

Cover Type

A = Aspen	J = Jack Pine	O = Oak	U = Upland Brush
B = Paper Birch	K = Rock	P = Lowland Poplar	UM = Upland Mix Forest
C = Cedar	L = Lowland Brush	Q = Mixed Swamp Conifer	V = Bog or Marsh
D = Treed Bog	LM = Lowland Mix Forest	R = Red Pine	W = White Pine
E = Swamp Hardwoods	M = Maple, Beech, Birch	S = Black Spruce	X = Non Stocked
F = Spruce/Fir	MC = Mixed Conifer	T = Tamarack	Y = Sand
G = Grass	MD = Mixed Deciduous	Z = Water	
H = Hemlock	N = Marsh		

Density

0 = Non Stocked	5 = Pole Timber Medium
1 = Seedling Sapling Poor	6 = Pole Timber Well
2 = Seedling Sapling Medium	7 = Saw Timber Poor
3 = Seedling Sapling Well	8 = Saw Timber Medium
4 = Pole Timber Poor	9 = Saw Timber Well

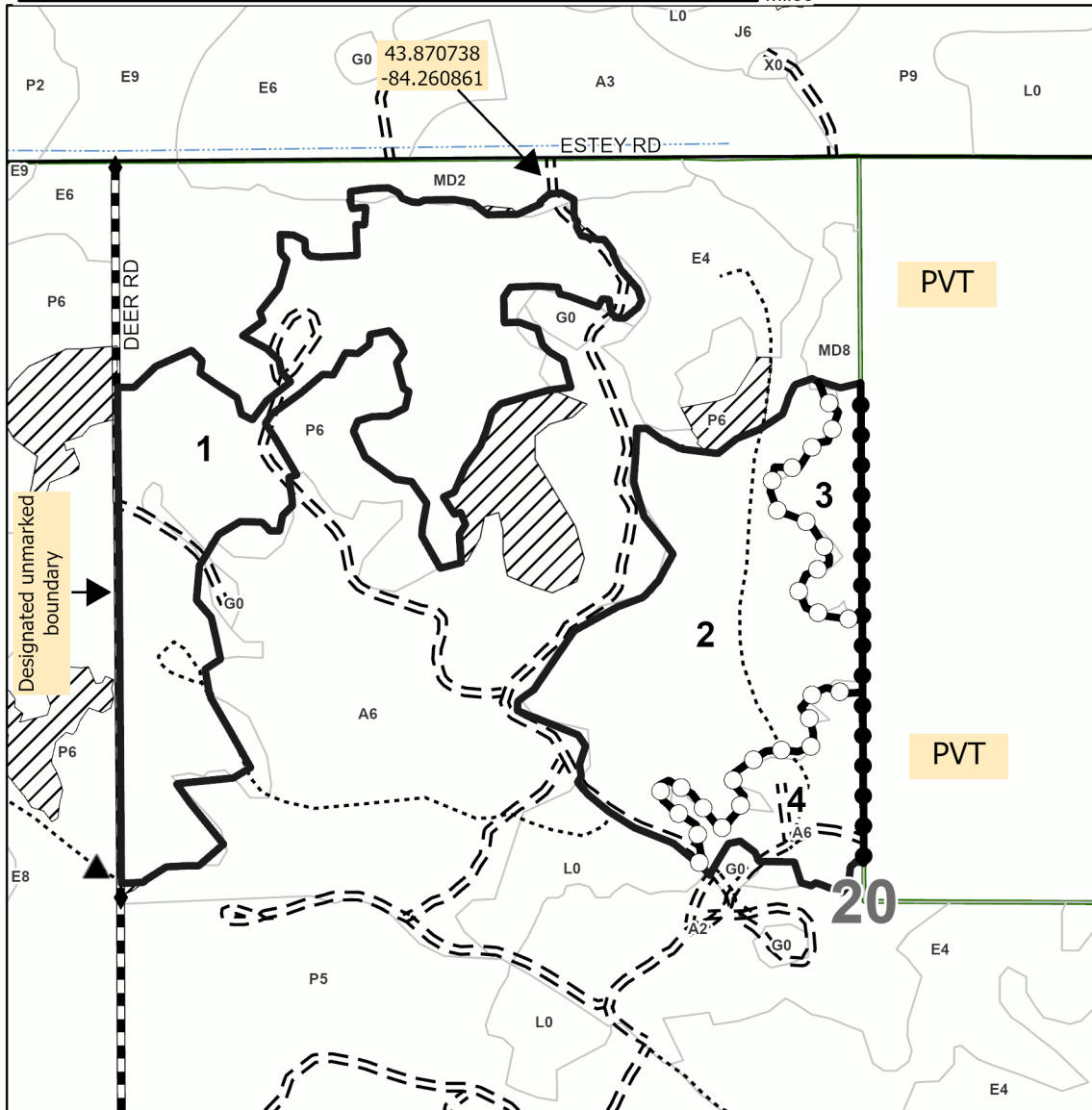
Mosquito Misery

111.4 Acres

PU #	Acres	PU #	Acres
1	34.7	4	6
2	23.4	5	26.2
3	3.6	6	17.5



0 0.13 0.25 0.5 Miles



Legend

- Against State (Red)
- Private Line (Blue)
- Payment Unit (Yellow)
- Forest Access Route
- Administrative Access Only
- Paved Road
- Government Gravel/Dirt
- Survey Corner
- Berm

Use QR Code to
open Map in App





TIMBER SALE MAP

This information provided by authority of Part 525, 1994 PA 451, as amended.

Sale Number

73-013-24

Date

10/24/2024

Forest Management Unit

Gladwin Mgt Unit

County

Gladwin

Mapped By: Behrmann

Cruised By: Behrmann

Scale

1:15,840

Page

2

Of

2

Township
17N

Range
02E

Section(s) and
Subdivision(s) Sec. 20 NW; Sec. 29 NWSW,S1/2SW,S1/2SE;

Cover Type

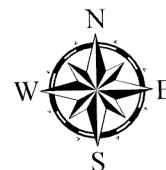
A = Aspen	J = Jack Pine	O = Oak	U = Upland Brush
B = Paper Birch	K = Rock	P = Lowland Poplar	UM = Upland Mix Forest
C = Cedar	L = Lowland Brush	Q = Mixed Swamp Conifer	V = Bog or Marsh
D = Treed Bog	LM = Lowland Mix Forest	R = Red Pine	W = White Pine
E = Swamp Hardwoods	M = Maple, Beech, Birch	S = Black Spruce	X = Non Stocked
F = Spruce/Fir	MC = Mixed Conifer	T = Tamarack	Y = Sand
G = Grass	MD = Mixed Deciduous	Z = Water	
H = Hemlock	N = Marsh		

Density

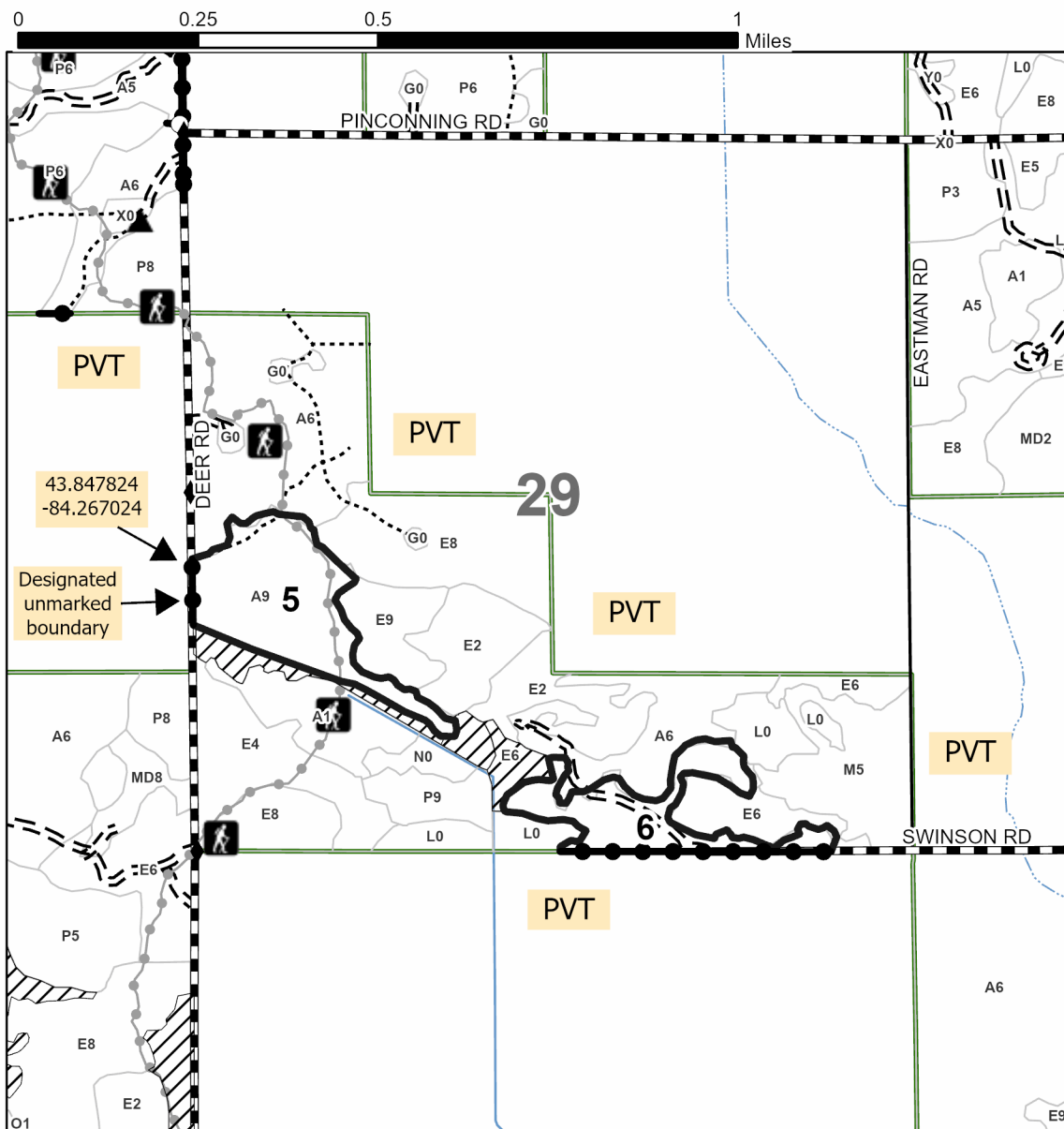
0 = Non Stocked	5 = Pole Timber Medium
1 = Seedling Sapling Poor	6 = Pole Timber Well
2 = Seedling Sapling Medium	7 = Saw Timber Poor
3 = Seedling Sapling Well	8 = Saw Timber Medium
4 = Pole Timber Poor	9 = Saw Timber Well

Mosquito Misery

111.4 Acres



PU #	Acres	PU #	Acres
1	34.7	4	6
2	23.4	5	26.2
3	3.6	6	17.5



Legend

- Against State (Red)
- Private Line (Blue)
- Payment Unit (Yellow)
- Forest Access Route
- Administrative Access Only
- Paved Road
- Government Gravel/Dirt
- Recreational Trails
- Survey Corner
- Berm

Use QR Code to
open Map in App



Turnpike Red Pine (73-004-24)
T20N, R05W, SEC. 4; Clare COUNTY

In response to the notice of sale to be held 10:00 a.m. (local time) on January 6, 2026, I am hereby submitting my sealed bid (firm offer) for the following forest products to be cut. Bids for individual species must be at or above the advertised price. All non-responsive bid forms may be rejected.

<u>PRODUCTS & SPECIES</u>	<u>ESTIMATED VOLUME*</u>	<u>ADVERTISED PRICE</u>	<u>BID PRICE/UNIT</u>
Sawtimber			
Red Pine	1,111.1 MBF	\$ 103.00/MBF	\$ _____
Pulpwood			
B. T. Aspen	2 Cords	\$ 26.30/Cord	\$ _____
Jack Pine	8 Cords	\$ 11.90/Cord	\$ _____
Mixed Hardwood	21 Cords	\$ 20.85/Cord	\$ _____
Mixed Oak	49 Cords	\$ 23.15/Cord	\$ _____
Red Pine	521 Cords	\$ 47.00/Cord	\$ _____

*The volumes are statistically estimated within plus (+) or minus (-) 11.40 percent at 95% confidence level. These estimated volumes are final and not subject to adjustment. Prospective bidders are urged to examine this timber and to make their own estimates of quantity and quality.

I understand that any or all bids may be rejected. All bids must be signed and all bid items must be bid or the bid form may be rejected. I also understand that consideration and awarding a contract will be based upon my past performance and ability to complete the contract based upon equipment and staffing subject to my control.

FEDERAL ID: ____ - ____ - ____ or SOCIAL SECURITY NUMBER: ____ - ____ - ____
Company or individual bidding: _____
Company representative's name: _____
Address: _____
City: _____ State: _____ Zip: _____

IF AVAILABLE, PLEASE PLACE THE PERSONALIZED LABEL FROM YOUR PROSPECTUS IN THE ABOVE BOX.

Individual or company representative's signature: _____ Date: _____

Phone number : _____ Email (optional): _____

**THE WINNING BIDDER MUST COMPLETE THE VERIFICATION OF WORKER'S DISABILITY COMPENSATION ACT
COMPLIANCE (ON REVERSE SIDE IF DOUBLE SIDED) WITHIN 21 DAYS OF SALE AWARD DATE**



TIMBER SALE VERIFICATION OF WORKER'S DISABILITY COMPENSATION ACT COMPLIANCE

As required by Act 317, P.A. 1969 (Worker's Compensation) and
Part 5 of Act 451 of 1994, as amended.

FOR DEPARTMENT USE ONLY

Sale Number (XX - XXX - XX - XX)

Forest Management Unit:

VERIFICATION OF WORKER'S DISABILITY COMPENSATION ACT COMPLIANCE

- This verification must be completed and submitted within 21 days of contract award and prior to the issuance of the timber sale contract.
- In addition, if boxes 2B or 2C are checked, then Notice of Exclusion or Certificate of Insurance must be submitted within twenty-one (21) days of the contract award and prior to the issuance of the timber sale contract.
- All information must be typed or printed except for written signatures.

Please Check Appropriate Categories:

1. My business is organized as (you **must** check one of the boxes below):
 - A. ☐ Sole Proprietorship (individual)
 - B. ☐ Partnership
 - C. ☐ Corporation
2. You **must** check one of the boxes below:
 - A. ☐ I certify my business is a sole proprietorship and it has no employees but the sole proprietor. I am not subject to the Worker's Compensation Laws.
 - B. ☐ I certify my business has satisfied its obligation to the Worker's Compensation Act through the use of an approved Notice of Exclusion (BWC-337, Rev. 5/96). I will provide a copy of the Notice of Exclusion within 21 days of the contract award. (For questions or a copy of the BWC-337, please call the Worker's Compensation Bureau at 517-322-1195).
 - C. ☐ I certify my business has a Worker's Compensation Policy. I will provide an original Certificate of Insurance within twenty-one (21) days of the contract award.
3. If you have checked item 2(A) or 2(B), you **must** indicate the number of **both** full-time and part-time employees, other than yourself, including family members and active partners (if none, you must enter "0").

_____ Full-time Employees

_____ Part-time Employees

Name of Business		Federal ID (or) Social Security No.
Address		Telephone ()
City	State	ZIP

I hereby certify that the above information is true and correct. I agree to notify the Michigan DNR of any changes that occur in factors affecting my coverage during any of my present and future operations.

Signature of Owner or Authorized Representative

Title

Date

Please complete the "SEALED BID" information on the next page

61 Fish Creek (73-003-24)

T18N, R02E, SEC. 16; T18N, R02E, SEC. 17; T18N, R02E, SEC. 20; T18N, R02E,

In response to the notice of sale to be held 10:00 a.m. (local time) on January 6, 2026, I am hereby submitting my sealed bid (firm offer) for the following forest products to be cut. Bids for individual species must be at or above the advertised price. All non-responsive bid forms may be rejected.

<u>PRODUCTS & SPECIES</u>	<u>ESTIMATED VOLUME*</u>	<u>ADVERTISED PRICE</u>	<u>BID PRICE/UNIT</u>
Sawtimber			
Black Cherry	17.0 MBF	\$ 152.00/MBF	\$ _____
Black/Red (Hybrid) Oak	351.0 MBF	\$ 180.00/MBF	\$ _____
Jack Pine	11.3 MBF	\$ 51.00/MBF	\$ _____
Mixed Aspen	312.0 MBF	\$ 77.00/MBF	\$ _____
Red Maple	139.8 MBF	\$ 60.00/MBF	\$ _____
White Oak	66.5 MBF	\$ 109.00/MBF	\$ _____
White Pine	45.7 MBF	\$ 60.00/MBF	\$ _____
Pulpwood			
Jack Pine	82 Cords	\$ 11.90/Cord	\$ _____
Mixed Aspen	2,212 Cords	\$ 26.30/Cord	\$ _____
Mixed Hardwood	434 Cords	\$ 20.85/Cord	\$ _____
Mixed Oak	997 Cords	\$ 23.15/Cord	\$ _____
Red Maple	1,601 Cords	\$ 20.85/Cord	\$ _____
Red Pine	11 Cords	\$ 47.00/Cord	\$ _____
Tamarack	38 Cords	\$ 8.40/Cord	\$ _____
White Pine	224 Cords	\$ 26.25/Cord	\$ _____

*The volumes are statistically estimated within plus (+) or minus (-) 9.27 percent at 95% confidence level. These estimated volumes are final and not subject to adjustment. Prospective bidders are urged to examine this timber and to make their own estimates of quantity and quality.

I understand that any or all bids may be rejected. All bids must be signed and all bid items must be bid or the bid form may be rejected. I also understand that consideration and awarding a contract will be based upon my past performance and ability to complete the contract based upon equipment and staffing subject to my control.

FEDERAL ID: ____ - ____ - ____ or SOCIAL SECURITY NUMBER: ____ - ____ - ____

Company or individual bidding: _____

Company representative's name: _____

Address: _____

City: _____ State: _____ Zip: _____

IF AVAILABLE, PLEASE PLACE THE PERSONALIZED LABEL FROM YOUR PROSPECTUS IN THE ABOVE BOX.

Individual or company representative's signature: _____ Date: _____

Phone number : _____ Email (optional): _____

**THE WINNING BIDDER MUST COMPLETE THE VERIFICATION OF WORKER'S DISABILITY COMPENSATION ACT
COMPLIANCE (ON REVERSE SIDE IF DOUBLE SIDED) WITHIN 21 DAYS OF SALE AWARD DATE**



TIMBER SALE VERIFICATION OF WORKER'S DISABILITY COMPENSATION ACT COMPLIANCE

As required by Act 317, P.A. 1969 (Worker's Compensation) and
Part 5 of Act 451 of 1994, as amended.

FOR DEPARTMENT USE ONLY

Sale Number (XX - XXX - XX - XX)

Forest Management Unit:

VERIFICATION OF WORKER'S DISABILITY COMPENSATION ACT COMPLIANCE

- This verification must be completed and submitted within 21 days of contract award and prior to the issuance of the timber sale contract.
- In addition, if boxes 2B or 2C are checked, then Notice of Exclusion or Certificate of Insurance must be submitted within twenty-one (21) days of the contract award and prior to the issuance of the timber sale contract.
- All Information must be typed or printed except for written signatures.

Please Check Appropriate Categories:

1. My business is organized as (you **must** check one of the boxes below):
 - A. ☐ Sole Proprietorship (individual)
 - B. ☐ Partnership
 - C. ☐ Corporation
2. You **must** check one of the boxes below:
 - A. ☐ I certify my business is a sole proprietorship and it has no employees but the sole proprietor. I am not subject to the Worker's Compensation Laws.
 - B. ☐ I certify my business has satisfied its obligation to the Worker's Compensation Act through the use of an approved Notice of Exclusion (BWC-337, Rev. 5/96). I will provide a copy of the Notice of Exclusion within 21 days of the contract award. (For questions or a copy of the BWC-337, please call the Worker's Compensation Bureau at 517-322-1195).
 - C. ☐ I certify my business has a Worker's Compensation Policy. I will provide an original Certificate of Insurance within twenty-one (21) days of the contract award.
3. If you have checked item 2(A) or 2(B), you **must** indicate the number of **both** full-time and part-time employees, other than yourself, including family members and active partners (if none, you must enter "0").

_____ Full-time Employees

_____ Part-time Employees

Name of Business		Federal ID (or) Social Security No.
Address		Telephone ()
City	State	ZIP

I hereby certify that the above information is true and correct. I agree to notify the Michigan DNR of any changes that occur in factors affecting my coverage during any of my present and future operations.

Signature of Owner or Authorized Representative

Title

Date

Please complete the "SEALED BID" information on the next page

Mosquito Misery (73-013-24)
T17N, R02E, SEC. 20; T17N, R02E, SEC. 29; Gladwin COUNTY

In response to the notice of sale to be held 10:00 a.m. (local time) on January 6, 2026, I am hereby submitting my sealed bid (firm offer) for the following forest products to be cut. Bids for individual species must be at or above the advertised price. All non-responsive bid forms may be rejected.

<u>PRODUCTS & SPECIES</u>	<u>ESTIMATED VOLUME*</u>	<u>ADVERTISED PRICE</u>	<u>BID PRICE/UNIT</u>
Sawtimber			
Mixed Aspen	267.1 MBF	\$ 51.00/MBF	\$ _____
Red Maple	77.8 MBF	\$ 40.00/MBF	\$ _____
Swamp White Oak	12.3 MBF	\$ 69.00/MBF	\$ _____
Pulpwood			
Mixed Aspen	1,235 Cords	\$ 17.55/Cord	\$ _____
Paper Birch	53 Cords	\$ 26.50/Cord	\$ _____
Red Maple	594 Cords	\$ 13.90/Cord	\$ _____
Swamp White Oak	20 Cords	\$ 15.45/Cord	\$ _____

*The volumes are statistically estimated within plus (+) or minus (-) 15.72 percent at 95% confidence level. These estimated volumes are final and not subject to adjustment. Prospective bidders are urged to examine this timber and to make their own estimates of quantity and quality.

I understand that any or all bids may be rejected. All bids must be signed and all bid items must be bid or the bid form may be rejected. I also understand that consideration and awarding a contract will be based upon my past performance and ability to complete the contract based upon equipment and staffing subject to my control.

FEDERAL ID: ____-____-____ or SOCIAL SECURITY NUMBER: ____-____-____
Company or individual bidding: _____
Company representative's name: _____
Address: _____
City: _____ State: _____ Zip: _____

IF AVAILABLE, PLEASE PLACE THE PERSONALIZED LABEL FROM YOUR PROSPECTUS IN THE ABOVE BOX.

Individual or company representative's signature: _____ Date: _____
Phone number : _____ Email (optional): _____

**THE WINNING BIDDER MUST COMPLETE THE VERIFICATION OF WORKER'S DISABILITY COMPENSATION ACT
COMPLIANCE (ON REVERSE SIDE IF DOUBLE SIDED) WITHIN 21 DAYS OF SALE AWARD DATE**



TIMBER SALE VERIFICATION OF WORKER'S DISABILITY COMPENSATION ACT COMPLIANCE

As required by Act 317, P.A. 1969 (Worker's Compensation) and
Part 5 of Act 451 of 1994, as amended.

FOR DEPARTMENT USE ONLY

Sale Number (XX - XXX - XX - XX)

Forest Management Unit:

VERIFICATION OF WORKER'S DISABILITY COMPENSATION ACT COMPLIANCE

- This verification must be completed and submitted within 21 days of contract award and prior to the issuance of the timber sale contract.
- In addition, if boxes 2B or 2C are checked, then Notice of Exclusion or Certificate of Insurance must be submitted within twenty-one (21) days of the contract award and prior to the issuance of the timber sale contract.
- All Information must be typed or printed except for written signatures.

Please Check Appropriate Categories:

1. My business is organized as (you **must** check one of the boxes below):
 - A. ☐ Sole Proprietorship (individual)
 - B. ☐ Partnership
 - C. ☐ Corporation
2. You **must** check one of the boxes below:
 - A. ☐ I certify my business is a sole proprietorship and it has no employees but the sole proprietor. I am not subject to the Worker's Compensation Laws.
 - B. ☐ I certify my business has satisfied its obligation to the Worker's Compensation Act through the use of an approved Notice of Exclusion (BWC-337, Rev. 5/96). I will provide a copy of the Notice of Exclusion within 21 days of the contract award. (For questions or a copy of the BWC-337, please call the Worker's Compensation Bureau at 517-322-1195).
 - C. ☐ I certify my business has a Worker's Compensation Policy. I will provide an original Certificate of Insurance within twenty-one (21) days of the contract award.
3. If you have checked item 2(A) or 2(B), you **must** indicate the number of **both** full-time and part-time employees, other than yourself, including family members and active partners (if none, you must enter "0").

_____ Full-time Employees

_____ Part-time Employees

Name of Business		Federal ID (or) Social Security No.
Address		Telephone ()
City	State	ZIP

I hereby certify that the above information is true and correct. I agree to notify the Michigan DNR of any changes that occur in factors affecting my coverage during any of my present and future operations.

Signature of Owner or Authorized Representative

Title

Date

Please complete the "SEALED BID" information on the next page