



**DEPARTMENT OF NATURAL RESOURCES
STATE OF MICHIGAN
TIMBER SALE PROSPECTUS #7695**

SCHEDULED SALE DATE AND TIME: 2:00 p.m. (local time) on February 23, 2026.

LOCATION: GWINN MGMT UNIT, 410 WEST M 35, GWINN, MI 49841.

PROSPECTUS NOTE: The bidder is advised to inspect the sale area and review the location, estimated volumes, operating costs and contract terms of proposed sales. Please be aware that some landowners may request 60 days or more notice for access across their land.

Notice is hereby given that bids will be received by the Unit Manager, GWINN MANAGEMENT UNIT, for certain timber on the following described lands:

Schultz's Time Warp (32-009-25) / T43N, R26W, SEC. 18, NW,SWNE,SW,SE.

T43N, R26W, SEC. 19, NW.

T43N, R27W, SEC. 13, SESE.

T43N, R27W, SEC. 24, NENE.

Marquette County, Advertised Price \$111,221.35, 255.8 Acres, Aspen, Sugar Maple.

SALE NOTE: Access is through private.

All harvesting efforts for the sale are limited to December 1 to March 31, due to deer winter ranges. Cutting and skidding are not permitted within payments Units 1-5 from April 15 to July 15 due to bark slippage.

An inactive hawk nest (buffered out), intermittent stream, and vernal pond are present within the sale area.

Access may be through private land.

Ross's Maple Split (32-014-25) / T43N, R26W, SEC. 16, NW,S1/2NE,NWSW,NESE.

T43N, R26W, SEC. 17, NW,NWNE,S1/2NE,SW,SE.

T43N, R26W, SEC. 18, N1/2NE,SENE.

T43N, R26W, SEC. 7 , SESE.

T43N, R26W, SEC. 8 , S1/2SW,SWSE.

T43N, R26W, SEC. 9 , SWSW.

Marquette County, Advertised Price \$129,720.25, 440.6 Acres, Sugar Maple, Hardwood.

SALE NOTE: Within Payment Unit(s) 12, 14, 15, 16, and 17, unless changed by written agreement, cutting, skidding, and hauling are limited to frozen conditions, generally the period of 12/01 to 04/01.

This sale requires the installation of one temporary stream crossing. The stream has a 6ft bankfull width.

Access to the sale area requires permission to cross Private Lands from Private Landowner(s) (Lyme Great Lakes Timber). Permission for access across Private Lands is the responsibility of the Purchaser.

Payment Unit 17 is a scaled unit and an Optional Payment Unit.

Access may be through private land.

BID INSTRUCTIONS (VER. 10/10/2022):

1. Scheduled Bid Location, Date, and Time (2/11)

Bids must be received by the Unit Manager, GWINN OFFICE, 410 WEST M 35, GWINN, MI 49841, no later than 2:00 p.m. (local time) on February 23, 2026. For further information concerning this sale, contact Mike Brodeur at 906-346-9201 extension 103.

2. Bidder's Qualifications (10/22)

If all or part of a timber sale was prepared by a private contractor, the contractor and that contractor's company are not permitted to bid on the timber sale. A person must be 18 years of age or older to purchase timber. Permanent employees of the Department of Natural Resources or members of their immediate household may not bid. Former employees, in the permanent or seasonal class, may not bid until 3 months after the last day of active duty. Bids will not be accepted from individuals or companies appearing on the DNR/FRD No-Bid List. This list contains the names of purchasers who previously failed to execute a contract within 21-days or who have a history of poor performance.

3. Preparation of Sealed Bids (5/16)

Bid Forms may be completed online thru Michigan DNR Timber Sale Online Bidding (OLB) at www.michigan.gov/timberbidding or by completing the hardcopy Bid Form found in the Timber Sale Prospectus. Hardcopy Bid Forms shall be manually signed in ink. Registration in OLB is considered your 'signature' for all bids submitted thru that system. Bid prices must be entered for each species and product in the Bid Price column for all material subject to bidding and all fill-in blanks must be completed. If erasures or other changes appear on the hardcopy Bid Form, each erasure or change must be initialed by the person signing the bid.

4. Submission of Sealed Bids (5/16)

Bid forms may be obtained from the Unit Manager or thru OLB. Bids may be submitted hardcopy or thru OLB. All hardcopy bids must be submitted on the bid form and in an envelope clearly identified as described in this section. NOTE: Only one bid form per bid envelope. Sealed bids must be submitted to the Unit office designated in the prospectus and must be submitted at or prior to the time established in the prospectus. The envelope should show on the outside (a) the sale name or number and (b) the date and time of bid opening, as shown in the prospectus. Bids received after the time specified in the sale prospectus are late bids and will be rejected.

It is possible for a bidder to submit multiple bids on a single sale. For example, a bid may be submitted hardcopy and a bid may be submitted thru OLB. Or, two bidders from the same company could both submit bids on the same sale. If this were to happen, the State would accept all bids received and award the contract accordingly. All bidding and contractual requirements would apply to all bids received.

5. Public Opening of Sealed Bids (7/16)

If conditions permit, the sealed bids will be publicly opened and posted at the time and place set in the prospectus.

If a bidder, present at a bid opening, has submitted bids on more than one sale, that bidder may withdraw their unopened bid envelopes or announce the withdrawal of their online bid after being declared the successful bidder on one sale.

6. Award of Contract (1/11)

Award of the contract will be made to the Bidder whose bid, conforming to the prospectus, is most advantageous to the State of Michigan on the basis of total value at rates bid for the estimated quantities. The State reserves the right to reject any bid or waive any minor irregularity in bids received. A written award mailed (or otherwise furnished) to the successful Bidder shall be deemed to result in a binding contract without further action by either party.

7. Down Payment (1/11)

The Bidder to whom award is made must make a down payment within 21 days of the sale award. The amount of the down payment will be calculated as shown in the Bond and Payment Schedule of this prospectus. Only cash may be used to meet this requirement.

8. Performance Security (1/11)

As guarantee of faithful performance, a cash bond, certificate of deposit, surety bond or irrevocable letter of credit (LOC) is required within 21 days of the sale award. The amount of the performance security is shown in the Bond and

Payment Schedule of this prospectus. If an LOC or surety is used, the coverage must extend for at least 6 months beyond the contract expiration.

9. Worker's Compensation (10/22)

Purchaser shall obtain worker's compensation insurance to cover claims under Michigan's Worker's Disability Compensation Act of 1969 or similar employee benefit act of any other state applicable to an employee. Verification of Worker's Disability Compensation Act Compliance must be completed and submitted within 21 days of contract award and prior to the issuance of the timber sale contract. In addition, if applicable, Notice of Exclusion or Certificate of Insurance must also be submitted.

10. Timber Sale Contract (10/22)

Additional conditions and requirements common to all timber sales are listed on the timber sale contract (R4031) and are available on line at www.michigan.gov/timber. Contact the Unit Manager for additional information or a sample contract. Within 21 days of the date of the award letter, the bidder must sign the contract and provide the required down payment, performance security, and verification of worker's disability compensation. The down payment and performance security shall be in accordance with the provisions of the timber sale contract, in the sums stated in this prospectus. If these actions are not taken, then the Bidder, the Bidder's corporation, and the corporation's principals may not be permitted to bid on State timber sales for a period of 3 months after the first offense, 6 months after the second offense, and 1 year after the third offense. An offense will only be counted against the Bidder for 5 years. In addition, the Bidder certifies that if awarded this contract, the Bidder will complete the timber sale contract in accordance with its terms and any modifications thereof including requirements to purchase, cut, and remove the included timber by the expiration date.

Payment Unit values in the State Forest Timber Sale Contract are calculated based on the advertised value of the Payment Unit as a percentage of the total advertised value of the contract. The advertised value of each Payment Unit is given in the Description of Timber by Payment Unit table on the Timber Sale Information page. For example, if the value of Payment Unit 1 is advertised as \$1,500 and the total Timber Sale value is advertised as \$10,000, the contract price for Payment Unit 1 will be 15% of the total bid price ($\$1,500/\$10,000 * 100$).

11. Disclaimer of Estimates and Bidder's Warranty of Inspection (10/22)

Before submitting this bid, the Bidder is advised and cautioned to inspect the sale area, review the requirements of the sale contract, and take other steps as may be reasonably necessary to ascertain the location, estimated volumes, construction estimates, and operating costs of the proposed sale. Failure to do so will not relieve the Bidder from responsibility for completing the contract.

The Bidder warrants that this bid is submitted solely on the basis of the Bidder's examination and inspection of the quality and quantity of the timber offered for sale and the Bidder's opinion of the value thereof and the costs of recovery. No reliance should be placed on the State of Michigan's estimates of timber quality, quantity or costs of recovery. Bidder further acknowledges that the State of Michigan: (i) expressly disclaims any warranty of fitness of timber for any purpose; (ii) offers this timber as is without any warranty of quality (merchantability) or quantity and (iii) expressly disclaims any warranty as to the quantity or quality of timber sold.

12. Certification and Chain-of-Custody (10/22)

Unless otherwise indicated in the contract under section 7 – Other Conditions of the Sale Specific Conditions & Requirements, the area encompassed by this timber sale is certified to the standards of the Forest Stewardship Council (FSC) - Certificate #SCS-FM/COC-00090N and the Sustainable Forestry Initiative (SFI) - Certificate #NSF-SFIS-5Y031-SF5. Forest products from this sale may be delivered to the mill as "FSC 100% and / or SFI certified" as long as the contractor hauling the forest products is chain-of-custody (COC) certified or covered under a COC certificate from the destination mill. The purchaser is responsible for maintaining COC after leaving the sale area.

13. Good Neighbor Authority (GNA) Requirements (10/22)

If the name of this timber sales contains the acronym GNA, it is authorized by the Good Neighbor Authority (GNA) and covered by various agreements between the U.S. Forest Service and the State. The timber sale occurs on federal land and the following conditions apply:

GNA contracts on US Forest Service land will not be awarded to purchasers on the Federal list of excluded parties. The System for Award Management (SAM) will be checked for active excluded parties prior to award of contract. In

addition, the Bidder to whom award is made must complete an Assurance Regarding Felony Conviction or Tax Delinquent Status for Corporate Applicants (AD-3031).

14. Good Neighbor Authority (GNA) Requirements, con't (10/22)

Bidder certifies, by signing this bid form, that to the best of Bidder's knowledge that the following representations are accurate and complete.

- a. That the Bidder and its principals are not presently debarred, suspended, proposed for debarment, declared ineligible, or voluntary excluded from timber sales (covered transactions) by any Federal department or agency.
- b. That the Bidder and its principals have not within a 3-year period preceding this bid been convicted of or had a civil judgment rendered against them for commission of fraud or a criminal offense in connection with obtaining , attempting to obtain, or performing a public (Federal, State, or local) transaction or contract under a public transaction; violation of Federal or State antitrust statutes or commission of embezzlement, theft, forgery, bribery, falsification or destruction of records, making false statements, or receiving stolen property.
- c. That the Bidder and its principals are not presently indicted for or otherwise criminally or civilly charged by a governmental entity (Federal, State, or local) with commission of any of the offenses enumerated in paragraph b of this certification.
- d. That the Bidder and its principals have not within a 3-year period preceding this bid had one or more public transactions (Federal, State, or local) terminated for breach or default of a timber or forest product contract.

Bidders that cannot certify this requirement, in whole or in part, shall submit an explanation with their bid.

Scott Bowen
Director

TIMBER SALE INFORMATION

Schultz's Time Warp (32-009-25)

T43N, R26W, SEC. 18; T43N, R26W, SEC. 19; T43N, R27W, SEC. 13; T43N, R27W, SEC. 24.
Marquette County (Advertised Price \$111,221.35)

SALE NOTE: Access is through private.

All harvesting efforts for the sale are limited to December 1 to March 31, due to deer winter ranges. Cutting and skidding are not permitted within payments Units 1-5 from April 15 to July 15 due to bark slippage.

An inactive hawk nest (buffered out), intermittent stream, and vernal pond are present within the sale area.

Access may be through private land.

A timber sale contract for this lump sum, sealed bid timber sale will be awarded to the responsible bidder offering the highest sealed bid price. All units of volume listed below were estimated using the Inventory Manager computer program and the new Michigan taper model. Bids must be at or above the following advertised price for each product and species:

<u>PRODUCTS & SPECIES</u>	<u>ESTIMATED UNITS*</u>		<u>ADVERTISED PRICE</u>
Sawtimber			
Basswood	25.9	MBF	\$ 67.00 / MBF
Red Maple	2.3	MBF	\$ 95.00 / MBF
Sugar Maple	125.2	MBF	\$ 199.00 / MBF
Pulpwood			
Balsam Fir	72	Cords	\$ 10.70 / Cord
Balsam Poplar	106	Cords	\$ 22.85 / Cord
Basswood	84	Cords	\$ 21.50 / Cord
Mixed Aspen	2,557	Cords	\$ 22.85 / Cord
Mixed Hardwood	120	Cords	\$ 12.15 / Cord
Mixed Spruce	75	Cords	\$ 11.40 / Cord
Sugar Maple	1,532	Cords	\$ 12.15 / Cord

* The total volume is statistically estimated within plus (+) or minus (-) 11.29 percent. There are an estimated 4,956 cords on this timber sale, plus or minus 560 cords at the 95% confidence level. The estimated units are final and not subject to adjustment. Prospective bidders are urged to examine this timber and to make their own estimates of quantity and quality.

BOND AND PAYMENT SCHEDULE:

1. A bond in the amount of \$11,122.00 to insure faithful performance of the conditions of the contract will be deposited by the successful bidder within 21 days of the sale award.
2. Cutting in any sale or unit without the required advance payment would be considered a trespass.
3. Total payment must be paid in advance or according to the following schedule:
 - (a) Ten percent (10%) of the sale value must be paid within 21 days of the sale award.
 - (b) The 10% down payment will be credited towards the first unit cut.
 - (c) Payment for each of the following units must be made before cutting begins in that unit:

PAYMENT UNIT NUMBER	PERCENT OF TOTAL SALE VALUE
01	10.0%
02	8.8%
03	8.1%
04	10.4%
05	7.6%
06	12.4%
07	19.2%
08	23.5%
4. If no cutting takes place, the 10% down payment will not be refunded.
5. Operations on the contract issued will terminate on 06/30/2030.

SALE STATISTICS

Volumes were calculated in cubic feet using the Michigan taper model. Cubic foot volume includes all wood inside bark for the product indicated. For display purposes, cubic feet were converted to cords and MBF using a simple conversion factor, e.g. 79 cubic feet per cord and 185 cubic feet per MBF. The cubic foot volumes are precise; the cords and MBF volumes are not. Cubic foot volume cannot be directly converted to cords or boards with precision.

SALE VOLUMES

The total estimated sale volume may not equal the sum of the species/products due to the nature of statistical calculations associated with double sampling methodology.

VOLUME			STATISTICAL RANGE IN CORDS	
TOTAL CUBIC FEET	TOTAL CORDS	PERCENT ERROR	MINIMUM	MAXIMUM
391,539	4,956	11.29%	4,396	5,516

VDU VOLUMES

A VDU is a Volume Determination Unit. Volumes and their associated statistics are calculated at the VDU level and summarized to the sale level. There is often a one to one relationship between a VDU and a Payment Unit, but not always, depending on the cruise design. Refer to the VDU TO PAYMENT UNIT table.

	VOLUME			RANGE IN CORDS	
VDU	TOTAL CUBIC FEET	TOTAL CORDS	PERCENT ERROR	MINIMUM	MAXIMUM
4	168,956	2,139	13.72%	1,845	2,432
13	222,583	2,818	17.04%	2,337	3,298
TOTAL:	391,539	4,956		4,183	5,730

VDU TO PAYMENT UNIT

When a VDU is associated with more than one Payment Unit (PU), the VDU volumes are assigned to the PU based on acres of the VDU within the PU.

VDU	VDU ACRES	PU	PU ACRES
TOTAL:			

DESCRIPTION OF TIMBER BY PAYMENT UNIT (PU)

PU	MARKET GROUP	PRODUCT	QUANTITY	UNIT	ACRES	ADVERTISE PRICE
1	Basswood	Sawtimber	5.8	MBF	36.6	\$11,112.55
	Red Maple		0.5	MBF		
	Sugar Maple		27.9	MBF		
	Basswood	Pulpwood	19	Cords		
	Mixed Aspen		24	Cords		
	<i>B. T. Aspen</i>		7	<i>Cords</i>		
	<i>Quaking Aspen</i>		17	<i>Cords</i>		
	Mixed Hardwood		13	Cords		
	<i>Ironwood</i>		1	<i>Cords</i>		
	<i>Red Maple</i>		8	<i>Cords</i>		
	<i>Yellow Birch</i>		4	<i>Cords</i>		
	Sugar Maple		330	Cords		
2	Basswood	Sawtimber	5.1	MBF	32.1	\$9,745.70
	Red Maple		0.5	MBF		
	Sugar Maple		24.5	MBF		
	Basswood	Pulpwood	16	Cords		
	Mixed Aspen		21	Cords		
	<i>B. T. Aspen</i>		6	<i>Cords</i>		
	<i>Quaking Aspen</i>		15	<i>Cords</i>		
	Mixed Hardwood		11	Cords		
	<i>Ironwood</i>		1	<i>Cords</i>		
	<i>Red Maple</i>		7	<i>Cords</i>		
	<i>Yellow Birch</i>		3	<i>Cords</i>		
	Sugar Maple		290	Cords		
3	Basswood	Sawtimber	4.7	MBF	29.6	\$8,995.35
	Red Maple		0.4	MBF		
	Sugar Maple		22.6	MBF		
	Basswood	Pulpwood	15	Cords		
	Mixed Aspen		20	Cords		
	<i>B. T. Aspen</i>		6	<i>Cords</i>		
	<i>Quaking Aspen</i>		14	<i>Cords</i>		
	Mixed Hardwood		10	Cords		
	<i>Ironwood</i>		1	<i>Cords</i>		
	<i>Red Maple</i>		6	<i>Cords</i>		
	<i>Yellow Birch</i>		3	<i>Cords</i>		
	Sugar Maple		267	Cords		
4	Basswood	Sawtimber	5.9	MBF	38.1	\$11,587.60
	Red Maple		0.5	MBF		
	Sugar Maple		29.0	MBF		
	Basswood	Pulpwood	20	Cords		
	Mixed Aspen		26	Cords		
	<i>B. T. Aspen</i>		8	<i>Cords</i>		
	<i>Quaking Aspen</i>		18	<i>Cords</i>		
	Mixed Hardwood		13	Cords		
	<i>Ironwood</i>		1	<i>Cords</i>		
	<i>Red Maple</i>		8	<i>Cords</i>		
	<i>Yellow Birch</i>		4	<i>Cords</i>		
	Sugar Maple		345	Cords		
5	Basswood	Sawtimber	4.4	MBF	27.8	\$8,457.90
	Red Maple		0.4	MBF		
	Sugar Maple		21.2	MBF		
	Basswood	Pulpwood	14	Cords		
	Mixed Aspen		19	Cords		
	<i>B. T. Aspen</i>		6	<i>Cords</i>		
	<i>Quaking Aspen</i>		13	<i>Cords</i>		
	Mixed Hardwood		10	Cords		

DESCRIPTION OF TIMBER BY PAYMENT UNIT (PU), CON'T

PU	MARKET GROUP	PRODUCT	QUANTITY	UNIT	ACRES	ADVERTISE PRICE
5 con't	<i>Ironwood</i>	<i>Pulpwood</i>	1	<i>Cords</i>		
	<i>Red Maple</i>		6	<i>Cords</i>		
	<i>Yellow Birch</i>		3	<i>Cords</i>		
	Sugar Maple		251	Cords		
6	Balsam Fir	Pulpwood	16	Cords	20.6	\$13,807.50
	Balsam Poplar		24	Cords		
	Mixed Aspen		551	Cords		
	<i>B. T. Aspen</i>		31	<i>Cords</i>		
	<i>Quaking Aspen</i>		520	<i>Cords</i>		
	Mixed Hardwood		14	Cords		
	<i>Paper Birch</i>		10	<i>Cords</i>		
	<i>Red Maple</i>		2	<i>Cords</i>		
	<i>Yellow Birch</i>		2	<i>Cords</i>		
	Mixed Spruce		17	Cords		
	<i>Black Spruce</i>		3	<i>Cords</i>		
	<i>White Spruce</i>		14	<i>Cords</i>		
	Sugar Maple		11	Cords		
7	Balsam Fir	Pulpwood	25	Cords	31.9	\$21,362.80
	Balsam Poplar		37	Cords		
	Mixed Aspen		852	Cords		
	<i>B. T. Aspen</i>		47	<i>Cords</i>		
	<i>Quaking Aspen</i>		805	<i>Cords</i>		
	Mixed Hardwood		22	Cords		
	<i>Paper Birch</i>		15	<i>Cords</i>		
	<i>Red Maple</i>		4	<i>Cords</i>		
	<i>Yellow Birch</i>		3	<i>Cords</i>		
	Mixed Spruce		27	Cords		
	<i>Black Spruce</i>		5	<i>Cords</i>		
	<i>White Spruce</i>		22	<i>Cords</i>		
	Sugar Maple		17	Cords		
8	Balsam Fir	Pulpwood	31	Cords	39.1	\$26,151.95
	Balsam Poplar		45	Cords		
	Mixed Aspen		1,044	Cords		
	<i>B. T. Aspen</i>		58	<i>Cords</i>		
	<i>Quaking Aspen</i>		986	<i>Cords</i>		
	Mixed Hardwood		27	Cords		
	<i>Paper Birch</i>		18	<i>Cords</i>		
	<i>Red Maple</i>		5	<i>Cords</i>		
	<i>Yellow Birch</i>		4	<i>Cords</i>		
	Mixed Spruce		31	Cords		
	<i>Black Spruce</i>		5	<i>Cords</i>		
	<i>White Spruce</i>		26	<i>Cords</i>		
	Sugar Maple		21	Cords		
TOTAL:			153.4	MBF		
TOTAL:			4,546	Cords		

Sale Specific Conditions & Requirements

Sale Name: Schultz's Time Warp

Sale Number: 32-009-25 Seq#: 1

1 - Sale Area

1.2 - Boundaries

1.2.1 - Painted Boundaries (9/19)

The sale boundary and Payment Unit boundaries are marked and identified by red and yellow paint. Exterior sale boundary lines against state are marked with red paint. Interior Payment Unit boundaries are marked with yellow paint. Retention patches are marked with red paint; no harvesting activities may occur within these areas. The painted boundary line trees are not Included Timber and are to be protected unless marked with orange paint. Yellow painted trees designating an interior Payment Unit boundary are only to be cut when all surrounding Payment Units have been paid.

2 - Timber Specifications

2.1 - Included Timber

2.1.1 - Clearcut Unit(s) with Unmerchantable Trees (6/14)

Within Payment Unit(s) 6-8, cut all trees that are two (2) inches or more at DBH, do not cut cedar, hemlock, American elm, and pine.

2.1.3 - Cut Tree Marked Unit(s) (12/08)

Within Payment Unit(s) 1-5, all trees are designated for cutting when marked with orange paint above and below stump height, regardless of merchantability. In addition, cut all spruce and fir which meet minimum piece specifications in 2.2 Utilization.

3 - Payments

3.4 - Damaged Timber

3.4.1 - Damaged Timber (12/24)

General Condition and Requirement 3.4 Damaged Timber, defines liquidated damages for undesignated live merchantable trees which are cut or injured. No damage is acceptable to undesignated live merchantable trees. Within the Sale Area, if more than 10% of trees (> 4.5" DBH) within a specified area of the sale are damaged, liquidated damages will be assessed for all trees damaged. Rates will be in accordance with General Condition and Requirement 3.4 Damaged Timber.

4 - Transportation

4.1 - Construction

4.1.3 - Slash and Earthen Piles (8/04)

Piles or windrows of earth along roads and landings that have been widened or constructed shall be leveled. Slash from road maintenance or construction, including stumps, shall be dispersed throughout the sale.

4.1.4 - Timber Removed for Construction (3/23)

Trees cut or damaged in the process of pre-approved road, landing, or skid trail construction will be decked in an area separate from other Designated Timber and not removed until measured by the Sale Administrator. Payment will be made at contract prices or average prices, if not on the contract.

4.1.6 - Road Construction (4/24)

Construction of new roads or improvements of existing roads shall be done in such a way as to minimize the environmental and visual impacts. Merchantable trees shall be cut and utilized unless otherwise directed. Non-merchantable trees shall be severed and laid flat on the ground. Slash shall be scattered, not left in windrows, and kept a minimum of 10 feet back from the road edge. Stumps shall be set upright, not left on edge, and be moved at least 10 feet away from the road edge. Disturbed soil shall be feathered into the woods and not left in berms or windrows.

4.1.7 - Road Closure (10/11)

All new roads built into the sale must be blocked to vehicle traffic upon completion of the sale. Overgrown roads that are reopened shall be considered new roads. In general, this will require constructing a four (4') foot high berm of stumps and

logs covered with earth. Temporary berms may be required if no sale activity occurs for 30 or more consecutive days. Contact the sale administrator for specific details of design and placement.

4.2 - Maintenance

4.2.1 - Hauling Restriction (12/08)

Hauling may be restricted on forest roads by the Unit Manager or his/her representative. The restriction may occur during wet weather conditions.

4.2.3 - Road maintenance (8/13)

The following road maintenance may be needed: Within 60 days of completion of hauling, or if no hauling occurs for 60 days, the road must be maintained and graded. This includes cleaning of drainage areas, grading, crowning and filling with gravel, if necessary. Damages will be assessed if grading/repair does not occur.

4.4 - Access

4.4.1 - Private property access (3/11)

Permission for access across private land is the responsibility of the Purchaser. Should the Purchaser desire to cross private land, a copy of the written permission from the private land-owner may be required by the DNR.

5 - Operations

5.1 - Notification

5.1.1 - Pre-sale Conference (10/25)

A pre-sale conference on site between the Purchaser and Sale Administrator is required prior to beginning any operations a Payment Unit to determine landing and road locations. The Unit Manager or his/her representative must be contacted at least 5 days in advance to schedule the conference.

5.2 - Conduct of Operations

5.2.2 - Hazard Trees/Snags

5.2.2.1 - Den Trees (10/16)

Obvious hollow and/or den trees shall be protected and left standing unless they are a safety hazard.

5.2.3 - Operating Restrictions

5.2.3.1 - Operating Restrictions (9/11)

Within Payment Unit(s) 1-8, unless changed by written agreement, cutting and skidding are limited to the period of 12/01 to 04/01. This restriction is due to deer winter ranges.

5.2.3.3 - Bark Slippage Restriction (3/09)

Within Payment Unit(s) 1-5, unless changed by written agreement, cutting and skidding are not permitted during the period of April 15 to July 15. This restriction is because of bark slippage.

5.2.32 - Decking/Landing Restoration (9/13)

All decking and landing areas must have the surface area restored to a condition equal to or better than before. This is to ensure the proper regeneration of the stand. Wood debris, chips and "cookies" from trimmings must be removed or scattered away from landing and loading areas and may not be windrowed on the edge.

5.2.38 - No Decking Against Live Trees (2/04)

Cut products may not be decked against unmarked or designated leave trees.

5.4 - Soil Protection

5.4.1 - Rutting Restriction, General (7/16)

Operations are to cease immediately if equipment and weather conditions result in rutting of roads and/or skid trails which is 12 inches or greater in depth and 50 feet in length. The Unit Manager or his/her representative may restrict hauling and/or skidding if ruts exceed the specified depth. With the Unit Manager or his/her representative's approval, the Purchaser may return to the area when the risk of rutting has decreased.

5.4.6 - Wet Area Protection (5/10)

No harvesting operations, including skidding and felling, are to take place within vernal ponds. Care must be taken by the Purchaser to identify and avoid operating in these areas of the timber sale.

5.8 - Protection of Endangered Species

5.8.5 - Protection of Raptor Nests (3/13)

All trees with raptor nests will be protected if found during harvesting operations. Notification will be made to the Unit Manager or his/her representative who will notify the Wildlife Biologist so an onsite evaluation and recommendation can be made, if necessary.

6 - Safety and Fire Prevention

6.2 - Signing

6.2.1 - Road Posting (10/20)

The Purchaser is responsible for posting and maintaining caution signs on Schultz Road and CR 426 prior to beginning operations. The road must be posted at appropriate distances from the sale area to warn of logging activity and truck traffic. Signs must be removed when harvest operations are suspended or completed. The Purchaser will provide these signs.

**TIMBER SALE MAP**

This information provided by authority of Part 525, 1994 PA 451, as amended.

Sale Number

32-009-25

Date

08/20/2025

Forest Management Unit

Gwinn Mgt Unit

County

Marquette

Mapped By: Rosten

Cruised By: Rosten & Yeo

Scale

1:15,840

Page

1

Of

1Township
43NRange
26W /

Section(s) and

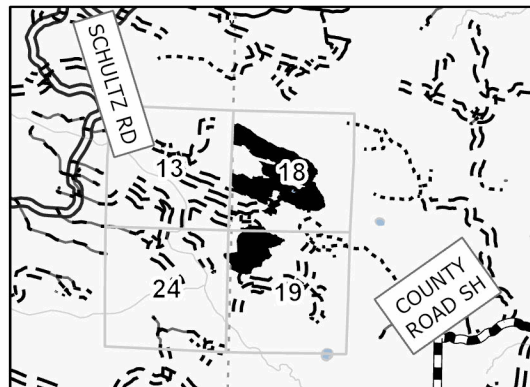
Subdivision(s) Sec. 13 SESE; Sec. 18 NW,SWNE,SW,SE; Sec. 19 NW; Sec. 24 NENE;

Cover Type

A = Aspen	J = Jack Pine	O = Oak	U = Upland Brush
B = Paper Birch	K = Rock	P = Lowland Poplar	UM = Upland Mix Forest
C = Cedar	L = Lowland Brush	Q = Mixed Swamp Conifer	V = Bog or Marsh
D = Treed Bog	LM = Lowland Mix Forest	R = Red Pine	W = White Pine
E = Swamp Hardwoods	M = Maple, Beech, Birch	S = Black Spruce	X = Non Stocked
F = Spruce/Fir	MC = Mixed Conifer	T = Tamarack	Y = Sand
G = Grass	MD = Mixed Deciduous	Z = Water	
H = Hemlock	N = Marsh		

Density

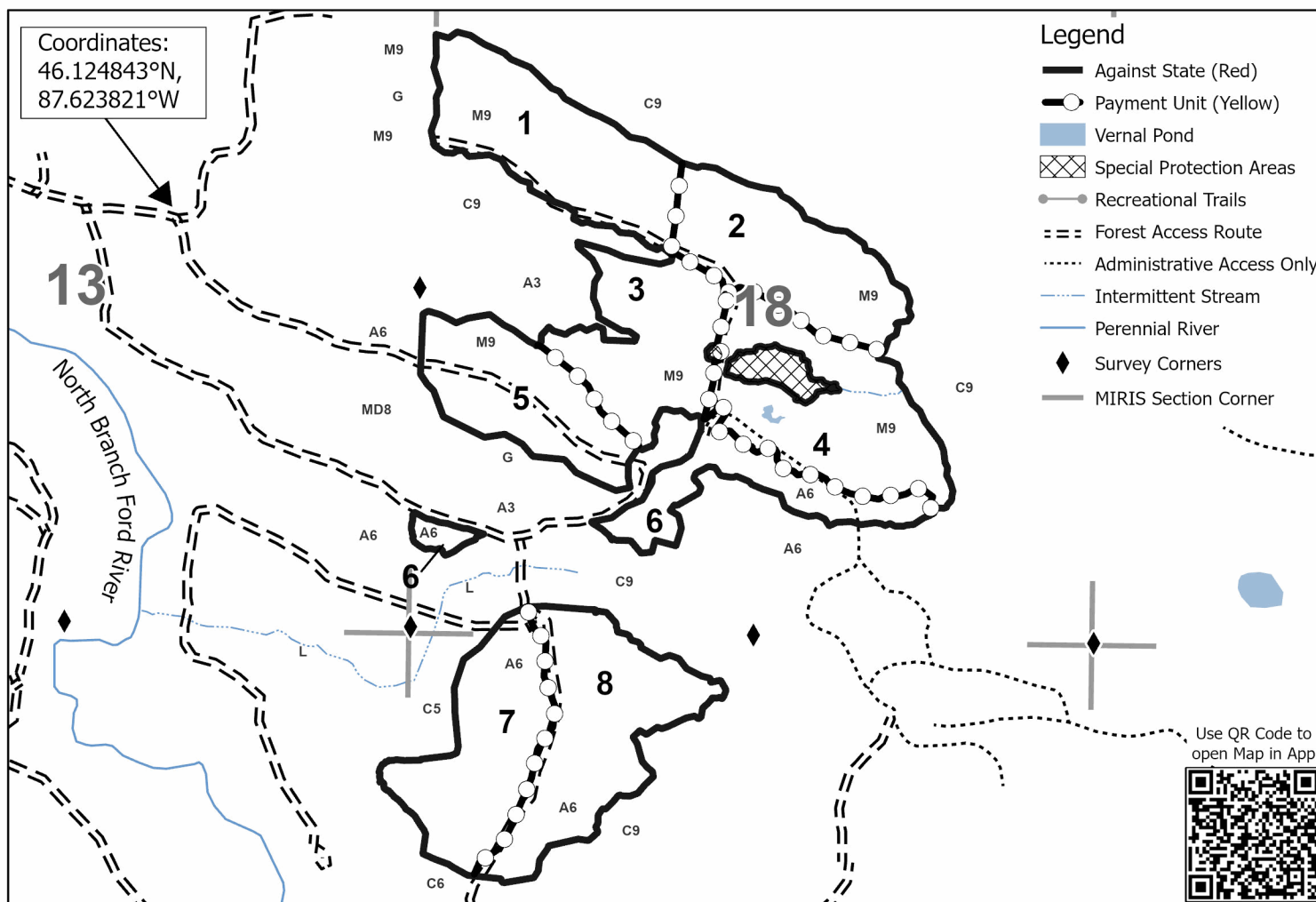
0 = Non Stocked	5 = Pole Timber Medium
1 = Seedling Sapling Poor	6 = Pole Timber Well
2 = Seedling Sapling Medium	7 = Saw Timber Poor
3 = Seedling Sapling Well	8 = Saw Timber Medium
4 = Pole Timber Poor	9 = Saw Timber Well

Locator Map 1:100,000

Schultz's Time Warp Compartment 62 255.8 Acres

Payment Unit Number	Acres	Payment Unit Number	Acres
1	36.5	5	27.8
2	32.1	6	20.6
3	29.6	7	31.9
4	38.1	8	39.1

0 0.25 0.5 1 Miles

Coordinates:
46.124843°N,
87.623821°WUse QR Code to
open Map in App

TIMBER SALE INFORMATION

Ross's Maple Split (32-014-25)

T43N, R26W, SEC. 16; T43N, R26W, SEC. 17; T43N, R26W, SEC. 18; T43N, R26W, SEC. 7; T43N, R26W, SEC. 8; T43N, R26W, SEC. 9.

SALE NOTE: Within Payment Unit(s) 12, 14, 15, 16, and 17, unless changed by written agreement, cutting, skidding, and hauling are limited to frozen conditions, generally the period of 12/01 to 04/01.

This sale requires the installation of one temporary stream crossing. The stream has a 6ft bankfull width.

Access to the sale area requires permission to cross Private Lands from Private Landowner(s) (Lyme Great Lakes Timber). Permission for access across Private Lands is the responsibility of the Purchaser.

Payment Unit 17 is a scaled unit and an Optional Payment Unit.

Access may be through private land.

A timber sale contract for this mixed, sealed bid timber sale will be awarded to the responsible bidder offering the highest sealed bid price. All units of volume listed below were estimated using the Inventory Manager computer program and the new Michigan taper model. Bids must be at or above the following advertised price for each product and species:

<u>PRODUCTS & SPECIES</u>	<u>ESTIMATED UNITS*</u>		<u>ADVERTISED PRICE</u>
Sawtimber			
Basswood	133.4	MBF	\$ 67.00 / MBF
Red Maple	2.7	MBF	\$ 95.00 / MBF
Sugar Maple	326.8	MBF	\$ 199.00 / MBF
Pulpwood			
Balsam Fir	93	Cords	\$ 10.70 / Cord
Balsam Poplar	56	Cords	\$ 22.85 / Cord
Basswood	332	Cords	\$ 21.50 / Cord
Mixed Hardwood	89	Cords	\$ 12.15 / Cord
Mixed Spruce	405	Cords	\$ 11.40 / Cord
Quaking Aspen	395	Cords	\$ 22.85 / Cord
Red Maple	113	Cords	\$ 12.15 / Cord
Sugar Maple	2,366	Cords	\$ 12.15 / Cord
Tamarack	94	Cords	\$ 13.15 / Cord

* The total volume is statistically estimated within plus (+) or minus (-) 9.44 percent. There are an estimated 5,026 cords on this timber sale, plus or minus 475 cords at the 95% confidence level. The estimated units are final and not subject to adjustment. Prospective bidders are urged to examine this timber and to make their own estimates of quantity and quality.

BOND AND PAYMENT SCHEDULE:

1. A bond in the amount of \$12,972.00 to insure faithful performance of the conditions of the contract will be deposited by the successful bidder within 21 days of the sale award.
2. Cutting in any sale or unit without the required advance payment would be considered a trespass.
3. Total payment must be paid in advance or according to the following schedule:
 - (a) Ten percent (10%) of the sale value must be paid within 21 days of the sale award.
 - (b) The 10% down payment will be credited towards the first unit cut.

(c) Payment for each of the following units must be made before cutting begins in that unit:

PAYMENT UNIT NUMBER	PERCENT OF TOTAL SALE VALUE
01	13.0%
02	10.3%
03	3.3%
04	10.9%
05	8.9%
06	9.5%
07	5.9%
08	5.1%
09	4.2%
10	9.8%
11	4.4%
12	2.5%
13	6.2%
14	0.7%
15	0.8%
16	1.0%
17	3.5%

4. If no cutting takes place, the 10% down payment will not be refunded.

5. Operations on the contract issued will terminate on 06/30/2030.

SALE STATISTICS

Volumes were calculated in cubic feet using the Michigan taper model. Cubic foot volume includes all wood inside bark for the product indicated. For display purposes, cubic feet were converted to cords and MBF using a simple conversion factor, e.g. 79 cubic feet per cord and 185 cubic feet per MBF. The cubic foot volumes are precise; the cords and MBF volumes are not. Cubic foot volume cannot be directly converted to cords or boards with precision.

SALE VOLUMES

The total estimated sale volume may not equal the sum of the species/products due to the nature of statistical calculations associated with double sampling methodology.

VOLUME			STATISTICAL RANGE IN CORDS	
TOTAL CUBIC FEET	TOTAL CORDS	PERCENT ERROR	MINIMUM	MAXIMUM
397,041	5,026	9.44%	4,551	5,501

VDU VOLUMES

A VDU is a Volume Determination Unit. Volumes and their associated statistics are calculated at the VDU level and summarized to the sale level. There is often a one to one relationship between a VDU and a Payment Unit, but not always, depending on the cruise design. Refer to the VDU TO PAYMENT UNIT table.

	VOLUME			RANGE IN CORDS	
VDU	TOTAL CUBIC FEET	TOTAL CORDS	PERCENT ERROR	MINIMUM	MAXIMUM
15	7,787	99	37.98%	61	136
18	180,034	2,279	13.25%	1,977	2,581
22	18,259	231	41.52%	135	327
23	30,703	389	43.53%	219	558
28	26,891	340	67.02%	112	569
33	76,521	969	17.74%	797	1,140
34	18,041	228	49.13%	116	341
38	3,074	39	77.74%	9	69
42	8,891	113	66.25%	38	187
53	26,840	340	29.11%	241	439
TOTAL:	397,041	5,026		3,705	6,346

VDU TO PAYMENT UNIT

When a VDU is associated with more than one Payment Unit (PU), the VDU volumes are assigned to the PU based on acres of the VDU within the PU.

VDU	VDU ACRES	PU	PU ACRES
TOTAL:			

DESCRIPTION OF TIMBER BY PAYMENT UNIT (PU)

PU	MARKET GROUP	PRODUCT	QUANTITY	UNIT	ACRES	ADVERTISE PRICE
1	Basswood	Sawtimber	20.6	MBF	49.1	\$16,812.10
	Red Maple		0.5	MBF		
	Sugar Maple		51.9	MBF		
	Balsam Fir		2	Cords		
	Basswood		33	Cords		
	Red Maple		9	Cords		
	Sugar Maple		347	Cords		
		Pulpwood				
2	Basswood	Sawtimber	16.4	MBF	39.0	\$13,375.80
	Red Maple		0.4	MBF		
	Sugar Maple		41.3	MBF		
	Balsam Fir		1	Cords		
	Basswood		26	Cords		
	Red Maple		7	Cords		
	Sugar Maple		277	Cords		
		Pulpwood				
3	Red Maple	Sawtimber	0.4	MBF	20.7	\$4,242.30
	Sugar Maple		8.3	MBF		
	Balsam Fir		4	Cords		
	Mixed Spruce		7	Cords		
	<i>White Spruce</i>		7	Cords		
	Red Maple		43	Cords		
	Sugar Maple		157	Cords		
		Pulpwood				
4	Basswood	Sawtimber	17.3	MBF	41.2	\$14,119.05
	Red Maple		0.4	MBF		
	Sugar Maple		43.6	MBF		
	Balsam Fir		1	Cords		
	Basswood		28	Cords		
	Red Maple		7	Cords		
	Sugar Maple		292	Cords		
		Pulpwood				
5	Basswood	Sawtimber	14.2	MBF	33.7	\$11,566.15
	Red Maple		0.3	MBF		
	Sugar Maple		35.7	MBF		
	Balsam Fir		1	Cords		
	Basswood		23	Cords		
	Red Maple		6	Cords		
	Sugar Maple		239	Cords		
		Pulpwood				
6	Basswood	Sawtimber	15.1	MBF	35.8	\$12,268.00
	Red Maple		0.3	MBF		
	Sugar Maple		37.9	MBF		
	Balsam Fir		1	Cords		
	Basswood		24	Cords		
	Red Maple		6	Cords		
	Sugar Maple		254	Cords		
		Pulpwood				
7	Basswood	Sawtimber	8.7	MBF	24.0	\$7,604.40
	Sugar Maple		21.0	MBF		
	Basswood		39	Cords		
	Mixed Spruce		1	Cords		
	<i>White Spruce</i>		1	Cords		
	Red Maple		3	Cords		
	Sugar Maple		161	Cords		
		Pulpwood				
8	Basswood	Sawtimber	7.5	MBF	20.9	\$6,624.05
	Sugar Maple		18.3	MBF		
	Basswood		34	Cords		
	Mixed Spruce		1	Cords		
	<i>White Spruce</i>		1	Cords		
	Red Maple		3	Cords		
		Pulpwood				

DESCRIPTION OF TIMBER BY PAYMENT UNIT (PU), CON'T

PU	MARKET GROUP	PRODUCT	QUANTITY	UNIT	ACRES	ADVERTISE PRICE
8 con't	Sugar Maple	Pulpwood	140	Cords		
9	Basswood	Sawtimber	9.2	MBF	18.1	\$5,425.60
	Red Maple		0.2	MBF		
	Sugar Maple		16.5	MBF		
	Basswood	Pulpwood	26	Cords		
	Sugar Maple		78	Cords		
10	Basswood	Sawtimber	14.4	MBF	40.0	\$12,722.20
	Sugar Maple		35.0	MBF		
	Basswood	Pulpwood	67	Cords		
	Mixed Spruce		2	Cords		
	White Spruce		2	Cords		
	Red Maple		6	Cords		
	Sugar Maple		268	Cords		
11	Basswood	Sawtimber	9.6	MBF	19.0	\$5,714.60
	Red Maple		0.2	MBF		
	Sugar Maple		17.3	MBF		
	Basswood	Pulpwood	28	Cords		
	Mixed Spruce		1	Cords		
	White Spruce		1	Cords		
	Red Maple		1	Cords		
	Sugar Maple		81	Cords		
12	Balsam Fir	Pulpwood	31	Cords	11.8	\$3,241.80
	Balsam Poplar		32	Cords		
	Mixed Hardwood		9	Cords		
	Paper Birch		9	Cords		
	Mixed Spruce		18	Cords		
	White Spruce		18	Cords		
	Quaking Aspen		64	Cords		
	Red Maple		10	Cords		
	Sugar Maple		22	Cords		
	Tamarack		1	Cords		
13	Balsam Fir	Pulpwood	28	Cords	13.8	\$8,073.10
	Balsam Poplar		14	Cords		
	Mixed Hardwood		22	Cords		
	Green Ash		20	Cords		
	Paper Birch		2	Cords		
	Mixed Spruce		44	Cords		
	White Spruce		44	Cords		
	Quaking Aspen		268	Cords		
	Red Maple		2	Cords		
	Sugar Maple		42	Cords		
	Tamarack		2	Cords		
14	Basswood	Sawtimber	0.2	MBF	5.9	\$956.55
	Balsam Fir	Pulpwood	8	Cords		
	Basswood		2	Cords		
	Mixed Hardwood		4	Cords		
	Paper Birch		1	Cords		
	Yellow Birch		3	Cords		
	Mixed Spruce		10	Cords		
	Black Spruce		4	Cords		
	White Spruce		6	Cords		
	Quaking Aspen		28	Cords		
	Sugar Maple		1	Cords		
15	Basswood	Sawtimber	0.2	MBF	6.6	\$1,070.80
	Balsam Fir	Pulpwood	10	Cords		

DESCRIPTION OF TIMBER BY PAYMENT UNIT (PU), CON'T

PU	MARKET GROUP	PRODUCT	QUANTITY	UNIT	ACRES	ADVERTISE PRICE
15 con't	Basswood	Pulpwood	2	Cords		
	Mixed Hardwood		6	Cords		
	<i>Paper Birch</i>		2	<i>Cords</i>		
	<i>Yellow Birch</i>		4	<i>Cords</i>		
	Mixed Spruce		10	Cords		
	<i>Black Spruce</i>		4	<i>Cords</i>		
	<i>White Spruce</i>		6	<i>Cords</i>		
	Quaking Aspen		31	Cords		
	Sugar Maple		1	Cords		
16	Balsam Fir	Pulpwood	6	Cords	12.0	\$1,321.30
	Balsam Poplar		10	Cords		
	Mixed Hardwood		48	Cords		
	<i>Paper Birch</i>		10	<i>Cords</i>		
	<i>Yellow Birch</i>		38	<i>Cords</i>		
	Mixed Spruce		14	Cords		
	<i>White Spruce</i>		14	<i>Cords</i>		
	Quaking Aspen		4	Cords		
	Red Maple		10	Cords		
	Sugar Maple		6	Cords		
	17		Mixed Spruce	Pulpwood		
<i>Black Spruce</i>		297	<i>Cords</i>			
Tamarack		91	Cords			
TOTAL:			462.9	MBF		
TOTAL:			3,943	Cords		

Sale Specific Conditions & Requirements

Sale Name: Ross's Maple Split

Sale Number: 32-014-25 Seq#: 1

1 - Sale Area

1.2 - Boundaries

1.2.1 - Painted Boundaries (9/19)

The sale boundary and Payment Unit boundaries are marked and identified by blue, red and yellow paint. Exterior sale boundary lines against private property are marked with blue paint. Exterior sale boundary lines against state are marked with red paint. Interior Payment Unit boundaries are marked with yellow paint. The painted boundary line trees are not Included Timber and are to be protected unless marked with orange paint. Yellow painted trees designating an interior Payment Unit boundary are only to be cut when all surrounding Payment Units have been paid.

2 - Timber Specifications

2.1 - Included Timber

2.1.1 - Clearcut Unit(s) with Unmerchantable Trees (6/14)

Within Payment Unit(s) 12-15 & 17, cut all trees that are two (2) inches or more at DBH, except do not cut American elm, cedar, hemlock, or pine (see spec 2.1.11).

Within Payment Unit(s) 16, cut all trees that are two (2) inches or more at DBH, except do not cut American elm, cedar, hemlock, pine, or trees marked with green paint above and below stump height.

2.1.3 - Cut Tree Marked Unit(s) (12/08)

Within Payment Unit(s) 1-11, all trees are designated for cutting when marked with orange paint above and below stump height, regardless of merchantability. Additionally, cut all spruce and fir for which meet minimum piece specifications in 2.2 Utilization.

2.1.11 - Description of Timber Note (2/04)

Note that Payment Unit 17 is an optional Payment Unit. Removing this Payment Unit from the sale is a contract modification which requires a Timber Sale Contract Amendment.

3 - Payments

3.4 - Damaged Timber

3.4.1 - Damaged Timber (12/24)

General Condition and Requirement 3.4 Damaged Timber, defines liquidated damages for undesignated live merchantable trees which are cut or injured.

No damage is acceptable to undesignated live merchantable trees. Within the Sale Area, if more than 10% of trees (> 4.5" DBH) within a specified area of the sale are damaged, liquidated damages will be assessed for all trees damaged. Rates will be in accordance with General Condition and Requirement 3.4 Damaged Timber.

4 - Transportation

4.1 - Construction

4.1.1 - Stream Crossings, General (1/25)

All stream crossing structures will be temporary and, therefore, shall be provided by the Purchaser and must be removed upon completion of the sale. All permits for stream crossings will be provided by the DNR for crossings on State owned land.

4.1.3 - Slash and Earthen Piles (8/04)

Piles or windrows of earth along roads and landings that have been widened or constructed shall be leveled. Slash from road maintenance or construction, including stumps, shall be dispersed throughout the sale.

4.1.4 - Timber Removed for Construction (3/23)

Trees cut or damaged in the process of pre-approved road, landing, or skid trail construction will be decked in an area

separate from other Designated Timber and not removed until measured by the Sale Administrator. Payment will be made at contract prices or average prices, if not on the contract.

4.1.6 - Road Construction (4/24)

Construction of new roads or improvements of existing roads shall be done in such a way as to minimize the environmental and visual impacts. Merchantable trees shall be cut and utilized unless otherwise directed. Non-merchantable trees shall be severed and laid flat on the ground. Slash shall be scattered, and not left in windrows and kept a minimum of 10 feet back from the road edge. Stumps shall be set upright, not left on edge, and be moved at least 10 feet away from the road edge. Disturbed soil shall be feathered into the woods and not left in berms or windrows.

4.1.7 - Road Closure (10/11)

All new roads built into the sale must be blocked to vehicle traffic upon completion of the sale. Overgrown roads that are reopened shall be considered new roads. In general, this will require constructing a four (4') foot high berm of stumps and logs covered with earth. Contact the Sale Administrator for specific details of design and placement.

Note that: an existing road which accesses Payment Units 10, 13, and 14 will need to be closed, see the Timber Sale Map for location.

4.2 - Maintenance

4.2.1 - Hauling Restriction (12/08)

Hauling may be restricted on forest roads by the Unit Manager or his/her representative. The restriction may occur during wet weather conditions.

4.2.3 - Road maintenance (8/13)

The following road maintenance may be needed: Within 60 days of completion of hauling, or if no hauling occurs for 60 days, the road must be maintained and graded. This includes cleaning of drainage areas, grading, crowning and filling with gravel, if necessary. Damages will be assessed if grading/repair does not occur.

4.4 - Access

4.4.1 - Private property access (3/11)

Permission for access across private land is the responsibility of the Purchaser. Should the Purchaser desire to cross private land, a copy of the written permission from the private land-owner may be required by the DNR.

5 - Operations

5.1 - Notification

5.1.1 - Pre-sale Conference (10/16)

A pre-sale conference on site between the Purchaser and Sale Administrator is required prior to beginning any operations. The Unit Manager or his/her representative must be contacted at least 5 days in advance to schedule the conference.

5.2 - Conduct of Operations

5.2.1 - Slash

5.2.1.11 - Slash for Reforestation (3/21)

To facilitate reforestation, the Sale Area shall be left with slash evenly distributed. Bunched tops within the cutting area shall be broken up and scattered. Stumps shall be cut low to the ground. Processing sites shall not be left with a compacted layer of slash; tops from these sites shall be hauled back into the cut area and scattered.

5.2.2 - Hazard Trees/Snags

5.2.2.1 - Den Trees (10/16)

Obvious hollow and/or den trees shall be protected and left standing unless they are a safety hazard.

5.2.3 - Operating Restrictions

5.2.3.1 - Operating Restrictions (9/11)

Within Payment Unit(s) 1-10, 13, 15, and 17, unless changed by written agreement, cutting and skidding are limited to period of December 1 to April 1. This restriction is because of deer wintering complex.

Additionally, within Payment Units 12 and 14-17, unless changed by written agreement, cutting and skidding are limited to the period of December 1 to April 1. This restriction is because of low wet ground.

5.2.3.3 - Bark Slippage Restriction (3/09)

Within Payment Unit(s) 1-11, unless changed by written agreement, cutting and skidding are not permitted during the period of April 15 to July 15. This restriction is because of bark slippage.

5.2.17 - Timber Mats and Interlocking Composite Mats (5/23)

Some roads or skid trails may require extra protection such as that afforded by timber mats, interlocking composite mats, or another approved system. If available, mats may be borrowed from the DNR. A Timber Sale Contract Amendment will be used to document the Purchaser's use of the DNR's mats. Contact the Sale Administrator regarding availability and pick-up. Timber mats are available from various field offices. Composite mats are only available from the Grayling field office and the Marquette ICC. The Purchaser is responsible for picking up and hauling the mats to and from the site. The composite mats will require DNR staff onsite for installation and removal. Contact the Sale Administrator to schedule at least 30 days before desired install/removal date. All mats must be cleaned prior to drop off. This may include, but is not limited to, power washing and brushing to remove mud and debris. A charge of \$700.00 per timber mat and \$2,000.00 per composite mat will be assessed for all damaged or non-returned mats. Damage for the crane/timber mats is defined as three or more broken cants. Damage for the composite mats is defined as cracked or broken mats.

5.2.32 - Decking/Landing Restoration (9/13)

All decking and landing areas must have the surface area restored to a condition equal to or better than before. This is to ensure the proper regeneration of the stand. Wood debris, chips and "cookies" from trimmings must be removed or scattered away from landing and loading areas and may not be windrowed on the edge.

5.2.38 - No Decking Against Live Trees (2/04)

Cut products may not be decked against unmarked or designated leave trees.

5.4 - Soil Protection

5.4.1 - Rutting Restriction, General (7/16)

Operations are to cease immediately if equipment and weather conditions result in rutting of roads and/or skid trails which is 12 inches or greater in depth and 50 feet in length. The Unit Manager or his/her representative may restrict hauling and/or skidding if ruts exceed the specified depth. With the Unit Manager or his/her representative's approval, the Purchaser may return to the area when the risk of rutting has decreased.

5.4.2 - Skid Trails (2/04)

Skid trails up and down slopes should be avoided. If, however, this is unavoidable, these trails will be left in a non-erodible condition using water bars, logs, and slash. Placing of slash on these skid trails while logging is ongoing may alleviate need for any further action. At the direction of the Sale Administrator, seed, fertilizer, and mulch may also be required.

5.8 - Protection of Endangered Species

5.8.5 - Protection of Raptor Nests (3/13)

All trees with raptor nests will be protected if found during harvesting operations. Notification will be made to the Unit Manager or his/her representative who will notify the Wildlife Biologist so an onsite evaluation and recommendation can be made, if necessary.

6 - Safety and Fire Prevention

6.2 - Signing

6.2.1 - Road Posting (10/20)

The Purchaser is responsible for posting and maintaining caution signs on Ross Grade and County Rd SH prior to beginning operations. The road must be posted at appropriate distances from the Sale Area to warn of logging activity and truck traffic. Signs must be removed when harvest operations are suspended or completed. The Purchaser will provide these signs.

7 - Other Conditions

7.5 - Loss

7.5.1 - Deteriorating Timber (7/09)

The Sale Area has received damage from spruce budworm and emerald ash borer. The Purchaser should harvest the wood as soon as possible. The Department of Natural Resources is held free of responsibility of any further damage or deterioration due to delay in harvesting.

TIMBER SALE MAP

This information provided by authority of Part 525, 1994 PA 451, as amended.

Sale Number 32-014-25	Date 08/29/2025	
Scale 1:17,000	Page 1	Of 2

Forest Management Unit			County	Mapped By: Fischer	Scale 1:17,000	Page	Of
Gwinn Mgt Unit			Marquette	Cruised By: Fischer, Gould, Siler		1	2
Township 43N	Range 26W	Section(s) SESE; Sec. 8 S1/2SW,SWSE; Sec. 9 SWSW; Subdivision(s) Sec. 16 NW,S1/2NE,NWSW,NESE; Sec. 17 NW,NWNE,S1/2NE,SW,SE; Sec. 18 N1/2NE,SENE; Sec. 7					

Cover Type

A = Aspen	J = Jack Pine	O = Oak	U = Upland Brush
B = Paper Birch	K = Rock	P = Lowland Poplar	UM = Upland Mix Forest
C = Cedar	L = Lowland Brush	Q = Mixed Swamp Conifer	V = Bog or Marsh
D = Treed Bog	LM = Lowland Mix Forest	R = Red Pine	W = White Pine
E = Swamp Hardwoods	M = Maple, Beech, Birch	S = Black Spruce	X = Non Stocked
F = Spruce/Fir	MC = Mixed Conifer	T = Tamarack	Y = Sand
G = Grass	MD = Mixed Deciduous		Z = Water
H = Hemlock	N = Marsh		

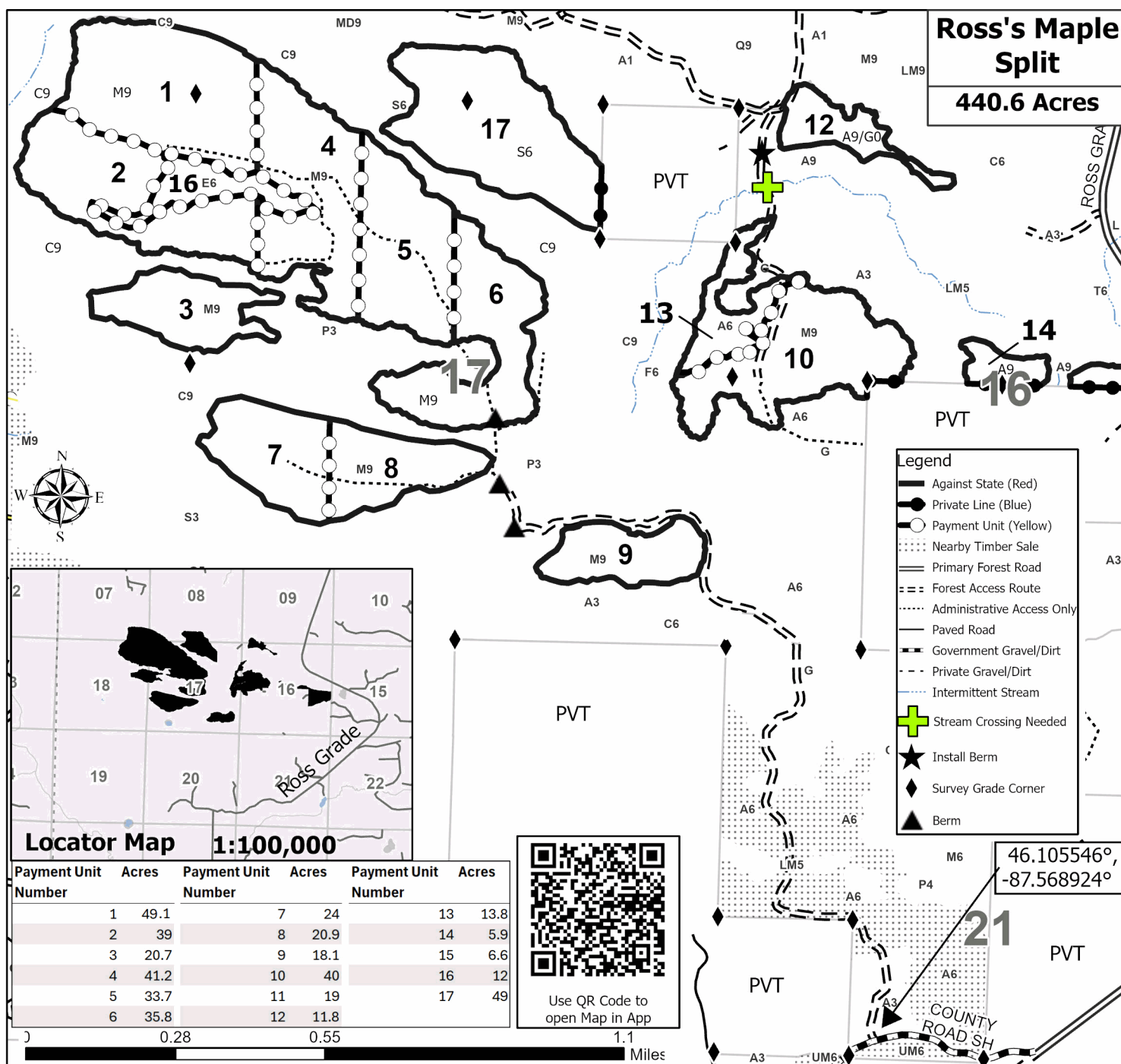
Density

0 = Non Stocked	5 = Pole Timber Medium
1 = Seedling Sapling Poor	6 = Pole Timber Well
2 = Seedling Sapling Medium	7 = Saw Timber Poor
3 = Seedling Sapling Well	8 = Saw Timber Medium
4 = Pole Timber Poor	9 = Saw Timber Well

Compartment 32062

Ross's Maple Split

440.6 Acres





TIMBER SALE MAP

This information provided by authority of Part 525, 1994 PA 451, as amended.

Sale Number

32-014-25

Date

08/29/2025

Forest Management Unit

County

Mapped By: Fischer

Scale

Page

Of

Gwinn Mgt Unit

Marquette

Cruised By: Fischer, Gould, Siler

1:14,000

2

2

Township
43N

Range
26W

Section(s) SESE; Sec. 8 S1/2SW,SWSE; Sec. 9 SWSW;
Subdivision(s) Sec. 16 NW,S1/2NE,NWSW,NESE; Sec. 17 NW,NWNE,S1/2NE,SW,SE; Sec. 18 N1/2NE,SENE; Sec. 7

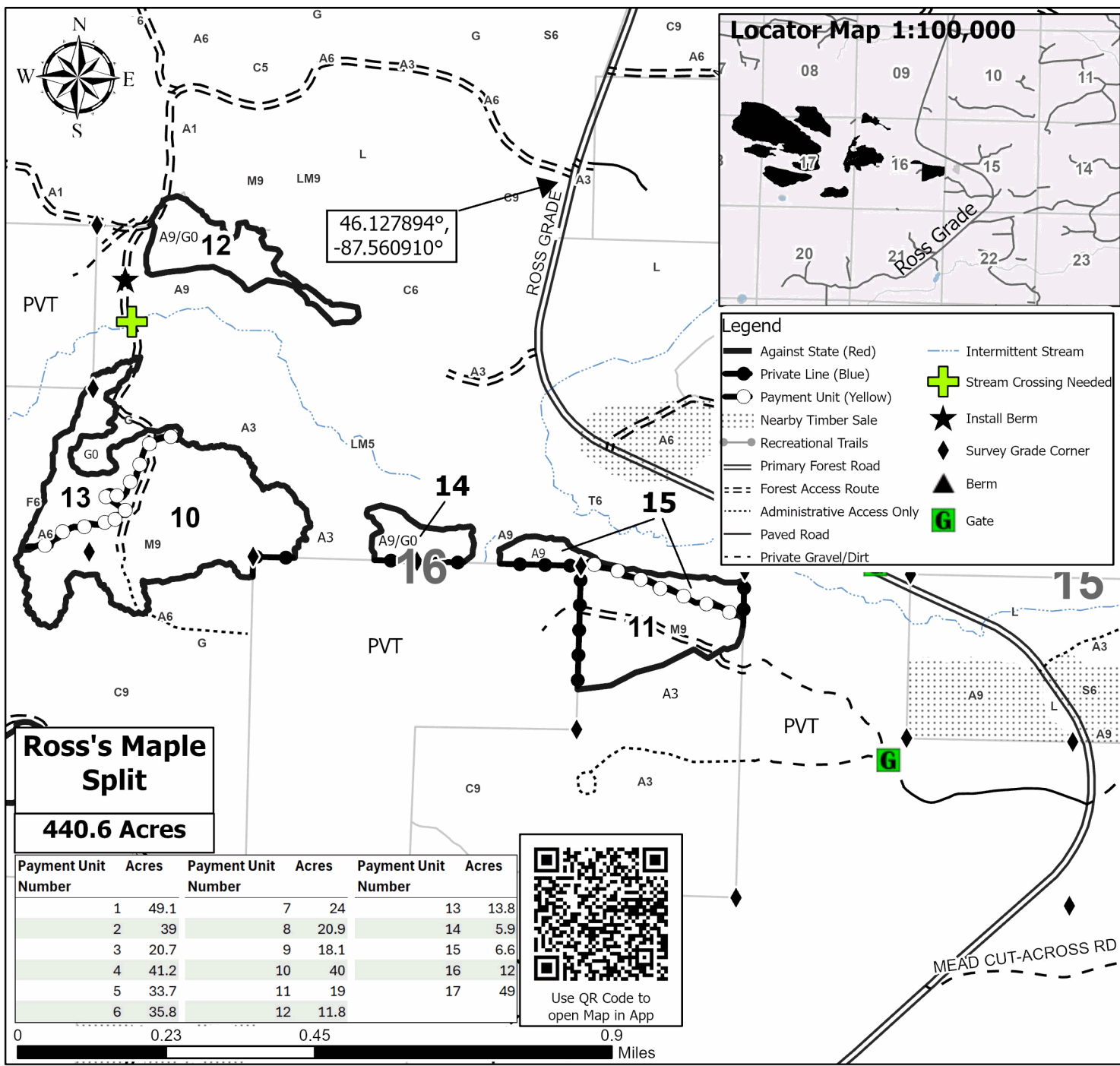
Cover Type

A = Aspen	J = Jack Pine	O = Oak	U = Upland Brush
B = Paper Birch	K = Rock	P = Lowland Poplar	UM = Upland Mix Forest
C = Cedar	L = Lowland Brush	Q = Mixed Swamp Conifer	V = Bog or Marsh
D = Treed Bog	LM = Lowland Mix Forest	R = Red Pine	W = White Pine
E = Swamp Hardwoods	M = Maple, Beech, Birch	S = Black Spruce	X = Non Stocked
F = Spruce/Fir	MC = Mixed Conifer	T = Tamarack	Y = Sand
G = Grass	MD = Mixed Deciduous		Z = Water
H = Hemlock	N = Marsh		

Density

0 = Non Stocked	5 = Pole Timber Medium
1 = Seedling Sapling Poor	6 = Pole Timber Well
2 = Seedling Sapling Medium	7 = Saw Timber Poor
3 = Seedling Sapling Well	8 = Saw Timber Medium
4 = Pole Timber Poor	9 = Saw Timber Well

Compartment 32062



Ross's Maple Split (32-014-25)

T43N, R26W, SEC. 16; T43N, R26W, SEC. 17; T43N, R26W, SEC. 18; T43N,

In response to the notice of sale to be held 2:00 p.m. (local time) on February 23, 2026, I am hereby submitting my sealed bid (firm offer) for the following forest products to be cut. Bids for individual species must be at or above the advertised price. All non-responsive bid forms may be rejected.

<u>PRODUCTS & SPECIES</u>	<u>ESTIMATED VOLUME*</u>	<u>ADVERTISED PRICE</u>	<u>BID PRICE/UNIT</u>
Sawtimber			
Basswood	133.4 MBF	\$ 67.00/MBF	\$ _____
Red Maple	2.7 MBF	\$ 95.00/MBF	\$ _____
Sugar Maple	326.8 MBF	\$ 199.00/MBF	\$ _____
Pulpwood			
Balsam Fir	93 Cords	\$ 10.70/Cord	\$ _____
Balsam Poplar	56 Cords	\$ 22.85/Cord	\$ _____
Basswood	332 Cords	\$ 21.50/Cord	\$ _____
Mixed Hardwood	89 Cords	\$ 12.15/Cord	\$ _____
Mixed Spruce	405 Cords	\$ 11.40/Cord	\$ _____
Quaking Aspen	395 Cords	\$ 22.85/Cord	\$ _____
Red Maple	113 Cords	\$ 12.15/Cord	\$ _____
Sugar Maple	2,366 Cords	\$ 12.15/Cord	\$ _____
Tamarack	94 Cords	\$ 13.15/Cord	\$ _____

*The volumes are statistically estimated within plus (+) or minus (-) 9.44 percent at 95% confidence level. These estimated volumes are final and not subject to adjustment. Prospective bidders are urged to examine this timber and to make their own estimates of quantity and quality.

I understand that any or all bids may be rejected. All bids must be signed and all bid items must be bid or the bid form may be rejected. I also understand that consideration and awarding a contract will be based upon my past performance and ability to complete the contract based upon equipment and staffing subject to my control.

FEDERAL ID: ____ - ____ - ____ or SOCIAL SECURITY NUMBER: ____ - ____ - ____

Company or individual bidding: _____

Company representative's name: _____

Address: _____

City: _____ State: _____ Zip: _____

IF AVAILABLE, PLEASE PLACE THE PERSONALIZED LABEL FROM YOUR PROSPECTUS IN THE ABOVE BOX.

Individual or company representative's signature: _____ Date: _____

Phone number : _____ Email (optional): _____

THE WINNING BIDDER MUST COMPLETE THE VERIFICATION OF WORKER'S DISABILITY COMPENSATION ACT COMPLIANCE (ON REVERSE SIDE IF DOUBLE SIDED) WITHIN 21 DAYS OF SALE AWARD DATE



TIMBER SALE VERIFICATION OF WORKER'S DISABILITY COMPENSATION ACT COMPLIANCE

As required by Act 317, P.A. 1969 (Worker's Compensation) and
Part 5 of Act 451 of 1994, as amended.

FOR DEPARTMENT USE ONLY

Sale Number (XX - XXX - XX - XX)

Forest Management Unit:

VERIFICATION OF WORKER'S DISABILITY COMPENSATION ACT COMPLIANCE

- This verification must be completed and submitted within 21 days of contract award and prior to the issuance of the timber sale contract.
- In addition, if boxes 2B or 2C are checked, then Notice of Exclusion or Certificate of Insurance must be submitted within twenty-one (21) days of the contract award and prior to the issuance of the timber sale contract.
- All information must be typed or printed except for written signatures.

Please Check Appropriate Categories:

1. My business is organized as (you **must** check one of the boxes below):
 - A. ☐ Sole Proprietorship (individual)
 - B. ☐ Partnership
 - C. ☐ Corporation
2. You **must** check one of the boxes below:
 - A. ☐ I certify my business is a sole proprietorship and it has no employees but the sole proprietor. I am not subject to the Worker's Compensation Laws.
 - B. ☐ I certify my business has satisfied its obligation to the Worker's Compensation Act through the use of an approved Notice of Exclusion (BWC-337, Rev. 5/96). I will provide a copy of the Notice of Exclusion within 21 days of the contract award. (For questions or a copy of the BWC-337, please call the Worker's Compensation Bureau at 517-322-1195).
 - C. ☐ I certify my business has a Worker's Compensation Policy. I will provide an original Certificate of Insurance within twenty-one (21) days of the contract award.
3. If you have checked item 2(A) or 2(B), you **must** indicate the number of **both** full-time and part-time employees, other than yourself, including family members and active partners (if none, you must enter "0").

_____ Full-time Employees

_____ Part-time Employees

Name of Business		Federal ID (or) Social Security No.
Address		Telephone ()
City	State	ZIP

I hereby certify that the above information is true and correct. I agree to notify the Michigan DNR of any changes that occur in factors affecting my coverage during any of my present and future operations.

Signature of Owner or Authorized Representative

Title

Date

Please complete the "SEALED BID" information on the next page

Schultz's Time Warp (32-009-25)

T43N, R26W, SEC. 18; T43N, R26W, SEC. 19; T43N, R27W, SEC. 13; T43N,

In response to the notice of sale to be held 2:00 p.m. (local time) on February 23, 2026, I am hereby submitting my sealed bid (firm offer) for the following forest products to be cut. Bids for individual species must be at or above the advertised price. All non-responsive bid forms may be rejected.

<u>PRODUCTS & SPECIES</u>	<u>ESTIMATED VOLUME*</u>	<u>ADVERTISED PRICE</u>	<u>BID PRICE/UNIT</u>
Sawtimber			
Basswood	25.9 MBF	\$ 67.00/MBF	\$ _____
Red Maple	2.3 MBF	\$ 95.00/MBF	\$ _____
Sugar Maple	125.2 MBF	\$ 199.00/MBF	\$ _____
Pulpwood			
Balsam Fir	72 Cords	\$ 10.70/Cord	\$ _____
Balsam Poplar	106 Cords	\$ 22.85/Cord	\$ _____
Basswood	84 Cords	\$ 21.50/Cord	\$ _____
Mixed Aspen	2,557 Cords	\$ 22.85/Cord	\$ _____
Mixed Hardwood	120 Cords	\$ 12.15/Cord	\$ _____
Mixed Spruce	75 Cords	\$ 11.40/Cord	\$ _____
Sugar Maple	1,532 Cords	\$ 12.15/Cord	\$ _____

*The volumes are statistically estimated within plus (+) or minus (-) 11.29 percent at 95% confidence level. These estimated volumes are final and not subject to adjustment. Prospective bidders are urged to examine this timber and to make their own estimates of quantity and quality.

I understand that any or all bids may be rejected. All bids must be signed and all bid items must be bid or the bid form may be rejected. I also understand that consideration and awarding a contract will be based upon my past performance and ability to complete the contract based upon equipment and staffing subject to my control.

FEDERAL ID: ____ - ____ - ____ or SOCIAL SECURITY NUMBER: ____ - ____ - ____

Company or individual bidding: _____

Company representative's name: _____

Address: _____

City: _____ State: _____ Zip: _____

IF AVAILABLE, PLEASE PLACE THE PERSONALIZED LABEL FROM YOUR PROSPECTUS IN THE ABOVE BOX.

Individual or company representative's signature: _____ Date: _____

Phone number : _____ Email (optional): _____

THE WINNING BIDDER MUST COMPLETE THE VERIFICATION OF WORKER'S DISABILITY COMPENSATION ACT COMPLIANCE (ON REVERSE SIDE IF DOUBLE SIDED) WITHIN 21 DAYS OF SALE AWARD DATE



TIMBER SALE VERIFICATION OF WORKER'S DISABILITY COMPENSATION ACT COMPLIANCE

As required by Act 317, P.A. 1969 (Worker's Compensation) and
Part 5 of Act 451 of 1994, as amended.

FOR DEPARTMENT USE ONLY

Sale Number (XX - XXX - XX - XX)

Forest Management Unit:

VERIFICATION OF WORKER'S DISABILITY COMPENSATION ACT COMPLIANCE

- This verification must be completed and submitted within 21 days of contract award and prior to the issuance of the timber sale contract.
- In addition, if boxes 2B or 2C are checked, then Notice of Exclusion or Certificate of Insurance must be submitted within twenty-one (21) days of the contract award and prior to the issuance of the timber sale contract.
- All information must be typed or printed except for written signatures.

Please Check Appropriate Categories:

1. My business is organized as (you **must** check one of the boxes below):
 - A. ☐ Sole Proprietorship (individual)
 - B. ☐ Partnership
 - C. ☐ Corporation
2. You **must** check one of the boxes below:
 - A. ☐ I certify my business is a sole proprietorship and it has no employees but the sole proprietor. I am not subject to the Worker's Compensation Laws.
 - B. ☐ I certify my business has satisfied its obligation to the Worker's Compensation Act through the use of an approved Notice of Exclusion (BWC-337, Rev. 5/96). I will provide a copy of the Notice of Exclusion within 21 days of the contract award. (For questions or a copy of the BWC-337, please call the Worker's Compensation Bureau at 517-322-1195).
 - C. ☐ I certify my business has a Worker's Compensation Policy. I will provide an original Certificate of Insurance within twenty-one (21) days of the contract award.
3. If you have checked item 2(A) or 2(B), you **must** indicate the number of **both** full-time and part-time employees, other than yourself, including family members and active partners (if none, you must enter "0").

_____ Full-time Employees

_____ Part-time Employees

Name of Business		Federal ID (or) Social Security No.
Address		Telephone ()
City	State	ZIP

I hereby certify that the above information is true and correct. I agree to notify the Michigan DNR of any changes that occur in factors affecting my coverage during any of my present and future operations.

Signature of Owner or Authorized Representative

Title

Date

Please complete the "SEALED BID" information on the next page