



**DEPARTMENT OF NATURAL RESOURCES
STATE OF MICHIGAN
TIMBER SALE PROSPECTUS #7805**

SCHEDULED SALE DATE AND TIME: 2:00 p.m. (local time) on June 15, 2026.

LOCATION: **GWINN MGMT UNIT, 410 WEST M 35, GWINN, MI 49841.**

PROSPECTUS NOTE: The bidder is advised to inspect the sale area and review the location, estimated volumes, operating costs and contract terms of proposed sales. Please be aware that some landowners may request 60 days or more notice for access across their land.

Notice is hereby given that bids will be received by the Unit Manager, GWINN MANAGEMENT UNIT, for certain timber on the following described lands:

Bear Blaster (32-002-26) / T44N, R29W, SEC. 3 , NWNW.
T44N, R29W, SEC. 5 , NESW,NWSE.
T45N, R29W, SEC. 22, S1/2SW.
T45N, R29W, SEC. 27, N1/2NW.
T45N, R29W, SEC. 32, NW,NE,N1/2SW,SESW,SE.
T45N, R29W, SEC. 33, NWNW,SW,SE.
T45N, R29W, SEC. 34, SW.

Dickinson County, Advertised Price \$162,866.95, 264.6 Acres, Aspen, Jack Pine.

SALE NOTE: This sale has several specs that restrict logging operations - See specs 5.2.3.4, 5.2.1. 11, 5.2.3.1 and 4.2.1 for additional information. This sale also has required road work (see spec 4.1.8).

A recreation site such as a trail, pathway, or campground is within the sale area or the vicinity. Certain restrictions/specifications may be applicable including time restrictions.

Vicious Ditches (32-007-26) / T43N, R24W, SEC. 18, S1/2SE.
T43N, R24W, SEC. 19, N1/2NE.
T43N, R24W, SEC. 20, NWNW,SESW.
T43N, R24W, SEC. 29, NENW.

Marquette County, Advertised Price \$10,652.80, 48.4 Acres, Sugar Maple, Hardwood.

SALE NOTE: This sale has several specs that restrict logging operations, i.e, 4.4.1 - Private property access; 5.2.3.3 Bark Slippage Restriction; and 5.2.3.1 Operating Restrictions.

Access may be through private land.

Peshekee Supreme (32-004-25) / T48N, R30W, SEC. 12, E1/2SE.
T48N, R30W, SEC. 13, E1/2NW.

Marquette County, Advertised Price \$5,399.40, 46.5 Acres, Hardwood, Paper Birch.

SALE NOTE: Four-year timber sale contract restricted to winter frozen during 12/1 to 4/1.

BID INSTRUCTIONS (VER. 10/10/2022):

1. Scheduled Bid Location, Date, and Time (2/11)

Bids must be received by the Unit Manager, GWINN OFFICE, 410 WEST M 35, GWINN, MI 49841, no later than 2:00 p.m. (local time) on June 15, 2026. For further information concerning this sale, contact Mike Brodeur at 906-346-9201 extension 103.

2. Bidder's Qualifications (10/22)

If all or part of a timber sale was prepared by a private contractor, the contractor and that contractor's company are not permitted to bid on the timber sale. A person must be 18 years of age or older to purchase timber. Permanent employees of the Department of Natural Resources or members of their immediate household may not bid. Former employees, in the permanent or seasonal class, may not bid until 3 months after the last day of active duty. Bids will not be accepted from individuals or companies appearing on the DNR/FRD No-Bid List. This list contains the names of purchasers who previously failed to execute a contract within 21-days or who have a history of poor performance.

3. Preparation of Sealed Bids (5/16)

Bid Forms may be completed online thru Michigan DNR Timber Sale Online Bidding (OLB) at www.michigan.gov/timberbidding or by completing the hardcopy Bid Form found in the Timber Sale Prospectus. Hardcopy Bid Forms shall be manually signed in ink. Registration in OLB is considered your 'signature' for all bids submitted thru that system. Bid prices must be entered for each species and product in the Bid Price column for all material subject to bidding and all fill-in blanks must be completed. If erasures or other changes appear on the hardcopy Bid Form, each erasure or change must be initialed by the person signing the bid.

4. Submission of Sealed Bids (5/16)

Bid forms may be obtained from the Unit Manager or thru OLB. Bids may be submitted hardcopy or thru OLB. All hardcopy bids must be submitted on the bid form and in an envelope clearly identified as described in this section. NOTE: Only one bid form per bid envelope. Sealed bids must be submitted to the Unit office designated in the prospectus and must be submitted at or prior to the time established in the prospectus. The envelope should show on the outside (a) the sale name or number and (b) the date and time of bid opening, as shown in the prospectus. Bids received after the time specified in the sale prospectus are late bids and will be rejected.

It is possible for a bidder to submit multiple bids on a single sale. For example, a bid may be submitted hardcopy and a bid may be submitted thru OLB. Or, two bidders from the same company could both submit bids on the same sale. If this were to happen, the State would accept all bids received and award the contract accordingly. All bidding and contractual requirements would apply to all bids received.

5. Public Opening of Sealed Bids (7/16)

If conditions permit, the sealed bids will be publicly opened and posted at the time and place set in the prospectus.

If a bidder, present at a bid opening, has submitted bids on more than one sale, that bidder may withdraw their unopened bid envelopes or announce the withdrawal of their online bid after being declared the successful bidder on one sale.

6. Award of Contract (1/11)

Award of the contract will be made to the Bidder whose bid, conforming to the prospectus, is most advantageous to the State of Michigan on the basis of total value at rates bid for the estimated quantities. The State reserves the right to reject any bid or waive any minor irregularity in bids received. A written award mailed (or otherwise furnished) to the successful Bidder shall be deemed to result in a binding contract without further action by either party.

7. Down Payment (1/11)

The Bidder to whom award is made must make a down payment within 21 days of the sale award. The amount of the down payment will be calculated as shown in the Bond and Payment Schedule of this prospectus. Only cash may be used to meet this requirement.

8. Performance Security (1/11)

As guarantee of faithful performance, a cash bond, certificate of deposit, surety bond or irrevocable letter of credit (LOC) is required within 21 days of the sale award. The amount of the performance security is shown in the Bond and

Payment Schedule of this prospectus. If an LOC or surety is used, the coverage must extend for at least 6 months beyond the contract expiration.

9. Worker's Compensation (10/22)

Purchaser shall obtain worker's compensation insurance to cover claims under Michigan's Worker's Disability Compensation Act of 1969 or similar employee benefit act of any other state applicable to an employee. Verification of Worker's Disability Compensation Act Compliance must be completed and submitted within 21 days of contract award and prior to the issuance of the timber sale contract. In addition, if applicable, Notice of Exclusion or Certificate of Insurance must also be submitted.

10. Timber Sale Contract (10/22)

Additional conditions and requirements common to all timber sales are listed on the timber sale contract (R4031) and are available on line at www.michigan.gov/timber. Contact the Unit Manager for additional information or a sample contract. Within 21 days of the date of the award letter, the bidder must sign the contract and provide the required down payment, performance security, and verification of worker's disability compensation. The down payment and performance security shall be in accordance with the provisions of the timber sale contract, in the sums stated in this prospectus. If these actions are not taken, then the Bidder, the Bidder's corporation, and the corporation's principals may not be permitted to bid on State timber sales for a period of 3 months after the first offense, 6 months after the second offense, and 1 year after the third offense. An offense will only be counted against the Bidder for 5 years. In addition, the Bidder certifies that if awarded this contract, the Bidder will complete the timber sale contract in accordance with its terms and any modifications thereof including requirements to purchase, cut, and remove the included timber by the expiration date.

Payment Unit values in the State Forest Timber Sale Contract are calculated based on the advertised value of the Payment Unit as a percentage of the total advertised value of the contract. The advertised value of each Payment Unit is given in the Description of Timber by Payment Unit table on the Timber Sale Information page. For example, if the value of Payment Unit 1 is advertised as \$1,500 and the total Timber Sale value is advertised as \$10,000, the contract price for Payment Unit 1 will be 15% of the total bid price ($\$1,500/\$10,000 * 100$).

11. Disclaimer of Estimates and Bidder's Warranty of Inspection (10/22)

Before submitting this bid, the Bidder is advised and cautioned to inspect the sale area, review the requirements of the sale contract, and take other steps as may be reasonably necessary to ascertain the location, estimated volumes, construction estimates, and operating costs of the proposed sale. Failure to do so will not relieve the Bidder from responsibility for completing the contract.

The Bidder warrants that this bid is submitted solely on the basis of the Bidder's examination and inspection of the quality and quantity of the timber offered for sale and the Bidder's opinion of the value thereof and the costs of recovery. No reliance should be placed on the State of Michigan's estimates of timber quality, quantity or costs of recovery. Bidder further acknowledges that the State of Michigan: (i) expressly disclaims any warranty of fitness of timber for any purpose; (ii) offers this timber as is without any warranty of quality (merchantability) or quantity and (iii) expressly disclaims any warranty as to the quantity or quality of timber sold.

12. Certification and Chain-of-Custody (10/22)

Unless otherwise indicated in the contract under section 7 – Other Conditions of the Sale Specific Conditions & Requirements, the area encompassed by this timber sale is certified to the standards of the Forest Stewardship Council (FSC) - Certificate #SCS-FM/COC-00090N and the Sustainable Forestry Initiative (SFI) - Certificate # NSF-SFIS-5Y031-SF5. Forest products from this sale may be delivered to the mill as "FSC 100% and / or SFI certified" as long as the contractor hauling the forest products is chain-of-custody (COC) certified or covered under a COC certificate from the destination mill. The purchaser is responsible for maintaining COC after leaving the sale area.

13. Good Neighbor Authority (GNA) Requirements (10/22)

If the name of this timber sales contains the acronym GNA, it is authorized by the Good Neighbor Authority (GNA) and covered by various agreements between the U.S. Forest Service and the State. The timber sale occurs on federal land and the following conditions apply:

GNA contracts on US Forest Service land will not be awarded to purchasers on the Federal list of excluded parties. The System for Award Management (SAM) will be checked for active excluded parties prior to award of contract. In

addition, the Bidder to whom award is made must complete an Assurance Regarding Felony Conviction or Tax Delinquent Status for Corporate Applicants (AD-3031).

14. Good Neighbor Authority (GNA) Requirements, con't (10/22)

Bidder certifies, by signing this bid form, that to the best of Bidder's knowledge that the following representations are accurate and complete.

- a. That the Bidder and its principals are not presently debarred, suspended, proposed for debarment, declared ineligible, or voluntary excluded from timber sales (covered transactions) by any Federal department or agency.
- b. That the Bidder and its principals have not within a 3-year period preceding this bid been convicted of or had a civil judgment rendered against them for commission of fraud or a criminal offense in connection with obtaining , attempting to obtain, or performing a public (Federal, State, or local) transaction or contract under a public transaction; violation of Federal or State antitrust statutes or commission of embezzlement, theft, forgery, bribery, falsification or destruction of records, making false statements, or receiving stolen property.
- c. That the Bidder and its principals are not presently indicted for or otherwise criminally or civilly charged by a governmental entity (Federal, State, or local) with commission of any of the offenses enumerated in paragraph b of this certification.
- d. That the Bidder and its principals have not within a 3-year period preceding this bid had one or more public transactions (Federal, State, or local) terminated for breach or default of a timber or forest product contract.

Bidders that cannot certify this requirement, in whole or in part, shall submit an explanation with their bid.

Scott Bowen
Director

TIMBER SALE INFORMATION

Bear Blaster (32-002-26)

T44N, R29W, SEC. 3; T44N, R29W, SEC. 5; T45N, R29W, SEC. 22; T45N, R29W, SEC. 27; T45N, R29W, SEC. 32; T45N, R29W, SEC. 33; T45N, R29W, SEC. 34.

SALE NOTE: This sale has several specs that restrict logging operations - See specs 5.2.3.4, 5.2.1. 11, 5.2.3.1 and 4.2.1 for additional information. This sale also has required road work (see spec 4.1.8).

A recreation site such as a trail, pathway, or campground is within the sale area or the vicinity. Certain restrictions/specifications may be applicable including time restrictions.

A timber sale contract for this lump sum, sealed bid timber sale will be awarded to the responsible bidder offering the highest sealed bid price. All units of volume listed below were estimated using the Inventory Manager computer program and the new Michigan taper model. Bids must be at or above the following advertised price for each product and species:

<u>PRODUCTS & SPECIES</u>	<u>ESTIMATED UNITS*</u>	<u>ADVERTISED PRICE</u>
Sawtimber		
Paper Birch	3.1 MBF	\$ 74.00 / MBF
Red Oak	29.3 MBF	\$ 140.00 / MBF
Pulpwood		
Balsam Fir	25 Cords	\$ 12.30 / Cord
Balsam Poplar	27 Cords	\$ 20.85 / Cord
Jack Pine	1,925 Cords	\$ 43.80 / Cord
Misc. Species 2	22 Cords	\$ 7.50 / Cord
Mixed Aspen	2,025 Cords	\$ 20.85 / Cord
Mixed Hardwood	243 Cords	\$ 14.45 / Cord
Mixed Spruce	565 Cords	\$ 13.75 / Cord
Paper Birch	96 Cords	\$ 14.75 / Cord
Red Oak	124 Cords	\$ 18.05 / Cord
Red Pine	335 Cords	\$ 44.35 / Cord
Tamarack	52 Cords	\$ 14.60 / Cord
White Pine	34 Cords	\$ 12.15 / Cord

* The total volume is statistically estimated within plus (+) or minus (-) 10.30 percent. There are an estimated 5,549 cords on this timber sale, plus or minus 572 cords at the 95% confidence level. The estimated units are final and not subject to adjustment. Prospective bidders are urged to examine this timber and to make their own estimates of quantity and quality.

BOND AND PAYMENT SCHEDULE:

1. A bond in the amount of \$16,287.00 to insure faithful performance of the conditions of the contract will be deposited by the successful bidder within 21 days of the sale award.
2. Cutting in any sale or unit without the required advance payment would be considered a trespass.
3. Total payment must be paid in advance or according to the following schedule :
 - (a) Ten percent (10%) of the sale value must be paid within 21 days of the sale award.
 - (b) The 10% down payment will be credited towards the first unit cut.

(c) Payment for each of the following units must be made before cutting begins in that unit:

PAYMENT UNIT NUMBER	PERCENT OF TOTAL SALE VALUE
01	12.6%
02	13.0%
03	13.5%
04	14.6%
05	12.2%
06	6.7%
07	4.1%
08	1.5%
09	2.2%
10	1.0%
11	0.2%
12	3.1%
13	6.1%
14	1.0%
15	4.3%
16	3.9%

4. If no cutting takes place, the 10% down payment will not be refunded.

5. Operations on the contract issued will terminate on 06/30/2030.

SALE STATISTICS

Volumes were calculated in cubic feet using the Michigan taper model. Cubic foot volume includes all wood inside bark for the product indicated. For display purposes, cubic feet were converted to cords and MBF using a simple conversion factor, e.g. 79 cubic feet per cord and 185 cubic feet per MBF. The cubic foot volumes are precise; the cords and MBF volumes are not. Cubic foot volume cannot be directly converted to cords or boards with precision.

SALE VOLUMES

The total estimated sale volume may not equal the sum of the species/products due to the nature of statistical calculations associated with double sampling methodology.

VOLUME		STATISTICAL RANGE IN CORDS		
TOTAL CUBIC FEET	TOTAL CORDS	PERCENT ERROR	MINIMUM	MAXIMUM
438,339	5,549	10.30%	4,977	6,120

VDU VOLUMES

A VDU is a Volume Determination Unit. Volumes and their associated statistics are calculated at the VDU level and summarized to the sale level. There is often a one to one relationship between a VDU and a Payment Unit, but not always, depending on the cruise design. Refer to the VDU TO PAYMENT UNIT table.

VDU	VOLUME		PERCENT ERROR	RANGE IN CORDS	
	TOTAL CUBIC FEET	TOTAL CORDS		MINIMUM	MAXIMUM
1	130,842	1,656	21.16%	1,306	2,007
2	40,137	508	33.19%	339	677
3	3,988	50	132.73%	0	117
4	3,567	45	68.19%	14	76
9	12,511	158	78.68%	34	283
31	13,381	169	66.60%	57	282
36	30,021	380	50.33%	189	571
51	8,992	114	71.77%	32	196
58	25,254	320	40.52%	190	449
59	16,560	210	39.84%	126	293
67	72,361	916	25.79%	680	1,152
72	25,603	324	41.18%	191	458
99	1,845	23	70.67%	7	40
104	27,147	344	33.09%	230	457
108	19,055	241	37.46%	151	332
164	7,074	90	82.76%	15	164
TOTAL:	438,339	5,549		3,561	7,553

VDU TO PAYMENT UNIT

When a VDU is associated with more than one Payment Unit (PU), the VDU volumes are assigned to the PU based on acres of the VDU within the PU.

VDU	VDU ACRES	PU	PU ACRES
TOTAL:			

DESCRIPTION OF TIMBER BY PAYMENT UNIT (PU)

PU	MARKET GROUP	PRODUCT	QUANTITY	UNIT	ACRES	ADVERTISE PRICE
1	Jack Pine Mixed Aspen <i>Quaking Aspen</i> Mixed Hardwood <i>Red Maple</i>	Pulpwood	439 58 58 11 11	Cords Cords Cords Cords Cords	14.2	\$20,596.45
2	Jack Pine Mixed Aspen <i>Quaking Aspen</i> Mixed Hardwood <i>Red Maple</i> Red Pine White Pine	Pulpwood	370 85 85 3 3 69 3	Cords Cords Cords Cords Cords Cords Cords	14.3	\$21,118.20
3	Jack Pine Mixed Aspen <i>Quaking Aspen</i> Mixed Hardwood <i>Black Cherry</i> <i>Red Maple</i> Red Pine White Pine	Pulpwood	378 90 90 5 1 4 76 3	Cords Cords Cords Cords Cords Cords Cords Cords	21.9	\$21,912.20
4	Jack Pine Mixed Aspen <i>Quaking Aspen</i> Mixed Hardwood <i>Black Cherry</i> <i>Red Maple</i> Red Pine White Pine	Pulpwood	411 98 98 5 1 4 81 3	Cords Cords Cords Cords Cords Cords Cords Cords	22.4	\$23,746.15
5	Jack Pine Mixed Aspen <i>B. T. Aspen</i> <i>Quaking Aspen</i> Mixed Hardwood <i>Black Cherry</i> <i>Red Maple</i> Mixed Spruce <i>Black Spruce</i> Paper Birch	Pulpwood	2 918 34 884 27 2 25 13 13 6	Cords Cords Cords Cords Cords Cords Cords Cords Cords Cords	49.4	\$19,885.30
6	Jack Pine Mixed Aspen <i>B. T. Aspen</i> <i>Quaking Aspen</i> Mixed Hardwood <i>Black Cherry</i> <i>Red Maple</i> Red Pine White Pine	Pulpwood	16 280 52 228 21 4 17 92 1	Cords Cords Cords Cords Cords Cords Cords Cords Cords	32.4	\$10,934.60
7	Jack Pine Mixed Aspen <i>Quaking Aspen</i> Mixed Hardwood <i>Black Cherry</i> Red Pine White Pine	Pulpwood	46 194 194 2 2 13 3	Cords Cords Cords Cords Cords Cords Cords	17.7	\$6,701.60
8	Balsam Fir	Pulpwood	3	Cords	7.1	\$2,371.75

DESCRIPTION OF TIMBER BY PAYMENT UNIT (PU), CON'T

PU	MARKET GROUP	PRODUCT	QUANTITY	UNIT	ACRES	ADVERTISE PRICE
8 con't	Mixed Aspen	Pulpwood	64	Cords		
	<i>B. T. Aspen</i>		27	<i>Cords</i>		
	<i>Quaking Aspen</i>		37	<i>Cords</i>		
	Mixed Hardwood		51	Cords		
	<i>Red Maple</i>		51	<i>Cords</i>		
	Mixed Spruce		2	Cords		
	<i>Black Spruce</i>		2	<i>Cords</i>		
Paper Birch	16	Cords				
9	Balsam Fir	Pulpwood	3	Cords	19.7	\$3,656.35
	Balsam Poplar		22	Cords		
	Mixed Aspen		17	Cords		
	<i>B. T. Aspen</i>		6	<i>Cords</i>		
	<i>Quaking Aspen</i>		11	<i>Cords</i>		
	Mixed Hardwood		42	Cords		
	<i>Red Maple</i>		42	<i>Cords</i>		
	Mixed Spruce		115	Cords		
	<i>Black Spruce</i>		115	<i>Cords</i>		
	Paper Birch		33	Cords		
Tamarack	9	Cords				
10	Paper Birch	Sawtimber	1.3	MBF	7.0	\$1,684.55
	Mixed Hardwood	Pulpwood	14	Cords		
	<i>Red Maple</i>		14	<i>Cords</i>		
	Mixed Spruce		53	Cords		
	<i>Black Spruce</i>		53	<i>Cords</i>		
	Paper Birch		2	Cords		
Tamarack	43		Cords			
11	Mixed Spruce	Pulpwood	15	Cords	5.9	\$324.25
	<i>Black Spruce</i>		15	<i>Cords</i>		
	Paper Birch		8	Cords		
12	Balsam Poplar	Pulpwood	5	Cords	11.7	\$5,101.05
	Jack Pine		11	Cords		
	Mixed Spruce		323	Cords		
	<i>Black Spruce</i>		323	<i>Cords</i>		
	Paper Birch		5	Cords		
13	Paper Birch	Sawtimber	1.8	MBF	13.9	\$9,985.25
	Balsam Fir	Pulpwood	11	Cords		
	Jack Pine		121	Cords		
	Mixed Aspen		145	Cords		
	<i>B. T. Aspen</i>		44	<i>Cords</i>		
	<i>Quaking Aspen</i>		101	<i>Cords</i>		
	Mixed Hardwood		36	Cords		
	<i>Red Maple</i>		36	<i>Cords</i>		
	Mixed Spruce		41	Cords		
	<i>Black Spruce</i>		36	<i>Cords</i>		
	<i>White Spruce</i>		5	<i>Cords</i>		
Paper Birch	21		Cords			
14	Balsam Fir	Pulpwood	8	Cords	7.7	\$1,589.90
	Mixed Aspen		48	Cords		
	<i>Quaking Aspen</i>		48	<i>Cords</i>		
	Mixed Hardwood		26	Cords		
	<i>Red Maple</i>		26	<i>Cords</i>		
	Mixed Spruce		3	Cords		
	<i>White Spruce</i>		3	<i>Cords</i>		
Paper Birch	5	Cords				
15	Red Oak	Sawtimber	29.3	MBF	13.3	\$6,937.75

DESCRIPTION OF TIMBER BY PAYMENT UNIT (PU), CON'T

PU	MARKET GROUP	PRODUCT	QUANTITY	UNIT	ACRES	ADVERTISE PRICE
15 con't	Misc. Species 2	Pulpwood	22	Cords		
	Red Oak		124	Cords		
	Red Pine		4	Cords		
	White Pine		21	Cords		
16	Jack Pine	Pulpwood	131	Cords	6.0	\$6,321.60
	Mixed Aspen		28	Cords		
	<i>Quaking Aspen</i>		28	<i>Cords</i>		
TOTAL:			32.4	MBF		
TOTAL:			5,473	Cords		

Sale Specific Conditions & Requirements

Sale Name: Bear Blaster

Sale Number: 32-002-26 Seq#: 1

1 - Sale Area

1.2 - Boundaries

1.2.1 - Painted Boundaries (9/19)

The sale boundary and Payment Unit boundaries are marked and identified by blue, red and yellow paint. Exterior sale boundary lines against private property are marked with blue paint. Exterior sale boundary lines against state are marked with red paint. Interior Payment Unit boundaries are marked with yellow paint. Retention patches are marked with red paint; no harvesting activities may occur within these areas. The painted boundary line trees are not Included Timber and are to be protected unless marked with orange paint. Yellow painted trees designating an interior Payment Unit boundary are only to be cut when all surrounding Payment Units have been paid.

2 - Timber Specifications

2.1 - Included Timber

2.1.1 - Clearcut Unit(s) with Unmerchantable Trees (6/14)

Within Payment Unit(s) 1-16, cut all trees that are two (2) inches or more at DBH, with the following exceptions:

- Within Payment Units 1, 5 and 8-14, do not cut red pine, white pine, hemlock, cedar, and oak.
- Within Payment Unit 16, do not cut white pine.

Note: Within Payment Units 1, 3-8, 13 and 16, all Included Timber marked with orange paint rings must be cut off at 6 feet. The top wood will be utilized and the bottom 6 feet will be left standing.

2.1.11 - Description of Timber Note (2/04)

Note that Misc. Species 2 is dead oak, which is designated for cutting.

In addition, Payment Unit 11 is an optional Payment Unit - If the Purchaser does not wish to harvest this unit, it can be removed from the contract with an amendment. See spec 8.3.2 for additional information.

2.2 - Utilization

2.2.3 - Stump Heights (12/24)

Stump heights within Payment Unit(s) 2-4, 6, 7, 15, and 16 shall not exceed 12 inches for trees greater than 10 inches at DBH and four (4) inches for trees smaller than 10 inches at DBH. This is in order to facilitate planting operations.

4 - Transportation

4.1 - Construction

4.1.4 - Timber Removed for Construction (3/23)

Trees cut or damaged in the process of pre-approved road, landing, or skid trail construction will be decked in an area separate from other Designated Timber and not removed until measured by the Sale Administrator. Payment will be made at contract prices or average prices, if not on the contract.

4.1.6 - Road Construction (4/24)

Construction of new roads or improvements of existing roads shall be done in such a way as to minimize the environmental and visual impacts. Merchantable trees shall be cut and utilized unless otherwise directed. Non-merchantable trees shall be severed and laid flat on the ground. Slash shall be scattered, and not left in windrows and kept a minimum of 10 feet back from the road edge. Stumps shall be set upright, not left on edge, and be moved at least 10 feet away from the road edge. Disturbed soil shall be feathered into the woods and not left in berms or windrows.

4.1.8 - Road Work (1) (8/07)

The following road work is required: The Purchaser is responsible for hauling and spreading 60 yards of pit run gravel on Chain of Lakes Road. Contact the Sale Administrator for placement details.

4.2 - Maintenance

4.2.1 - Hauling Restriction (12/08)

Hauling may be restricted on forest roads by the Unit Manager or his/her representative during spring breakup. During snowmobile season, December 1st through March 31st, hauling on Snowmobile Trail #5 will be restricted to Monday through Thursday during daylight hours. The restriction is for safety and resource protection.

4.2.2 - Fill Material (4/07)

To maintain roads, fill material may be needed in areas where "holes" exist or may be expected to develop. This fill material should be placed before trucking begins. Contact the sale administrator regarding the availability of onsite sand or gravel from adjacent State-owned lands.

4.2.3 - Road maintenance (8/13)

The following road maintenance is required: After all hauling is completed, Floodwood Rd (Dickinson County portion, appx 2.5 miles) must be graded with a road grader. This includes cleaning of drainage areas, grading, crowning and filling with gravel, if necessary. Damages will be assessed if grading/repair does not occur.

4.2.5 - Two Wheel Drive Condition (2/04)

All existing trail roads on and adjacent to the Sale Area must be passable by two-wheel drive traffic for the duration of the sale.

5 - Operations

5.1 - Notification

5.1.1 - Pre-sale Conference (10/25)

A pre-sale conference on site between the Purchaser and Sale Administrator is required prior to beginning any operations. The Unit Manager or his/her representative must be contacted at least 5 days in advance to schedule the conference.

5.2 - Conduct of Operations

5.2.1 - Slash

5.2.1.11 - Slash for Reforestation (3/21)

To facilitate reforestation, the Sale Area shall be left with slash evenly distributed. Bunched tops within the cutting area shall be broken up and scattered. Stumps shall be cut low to the ground. Processing sites shall not be left with a compacted layer of slash; tops from these sites shall be hauled back into the cut area and scattered.

5.2.3 - Operating Restrictions

5.2.3.1 - Operating Restrictions (9/11)

Within Payment Unit(s) 9-12, unless changed by written agreement, cutting and skidding are limited to frozen ground conditions (generally the period of December 1 to April 1). This restriction is due to wet soils.

5.2.3.4 - Oak Wilt Restriction, No Exceptions (1/18)

Within Payment Unit(s) 8 and 15, cutting, skidding, and hauling within the sale and brushing of access roads to the sale are not permitted during the period of April 15 to July 15. No exceptions will be granted. This is necessary to reduce the spread of oak wilt.

5.2.4 - Dead and Down Creation

5.2.4.2 - Dead and Down Creation, Hare and Grouse (1/25)

To improve habitat for snowshoe hare, grouse, and other species, the Purchaser is to leave one, 9-15" diameter piece, on the ground for every four (4) acres within Payment Units 13 and 14. If possible, the logs or trees should be felled so they are next to the stump. Note these pieces should have a minimum length of eight (8) feet. They can be of any tree species other than cedar, red pine, or white pine and can be an un-merchantable piece of wood or a full tree.

5.2.4.3 - Dead and Down Creation, Dead Trees (6/07)

Except as provided for in General Condition and Requirement 5.2.2, no dead trees, standing or down, are to be cut, skidded, or processed. Exception: Within Payment Unit 15, all standing dead trees 8 feet or taller are designated for cutting. This is in order to facilitate post-harvest site prep operations.

5.2.32 - Decking/Landing Restoration (9/13)

All decking and landing areas must have the surface area restored to a condition equal to or better than before. This is to ensure the proper regeneration of the stand. Wood debris, chips and "cookies" from trimmings must be removed or scattered away from landing and loading areas and may not be windrowed on the edge.

5.2.37 - No Decking Areas (12/08)

No decking is allowed within 20 feet of Floodwood Rd.

5.2.38 - No Decking Against Live Trees (2/04)

Cut products may not be decked against unmarked or designated leave trees.

5.2.39 - ORV Trail/Route Protection (4/18)

The Porterfield Motorcycle trail is shown on the Timber Sale Map. Maintain a 10-foot-wide slash, debris, and rut free zone daily using the motorcycle trail as the centerline. Do not run equipment down the motorcycle trail. Crossing the motorcycle trail should be limited to avoid damage. Sale Administrator may limit or designate crossing site on the motorcycle trail. See spec 2.1.1 for details on trees marked with orange paint rings.

5.2.41 - Snowmobile Trail Protection (9/11)

Snowmobile Trail #5 is shown on the Timber Sale Map. Do not cut or damage posts with orange trail markers or traffic control signs. If the trail is used, it must be maintained and restored to a condition equal to or better than before the sale. If the trail is used for hauling, it must be graded to the satisfaction of the Unit Manager or his/her representative prior to December 1. If the trail road is to be used for hauling during the snowmobile season, then a snow-covered base must be left on the trail (see spec 4.2.1 for additional information). Maintain a 20-foot-wide slash, debris, and rut free zone daily using the snowmobile trail as the centerline. All stumps within 10 feet of the snowmobile trail must be cut at ground level.

5.4 - Soil Protection

5.4.1 - Rutting Restriction, General (7/16)

Operations are to cease immediately if equipment and weather conditions result in rutting of roads and/or skid trails which is 12 inches or greater in depth and 50 feet in length. The Unit Manager or his/her representative may restrict hauling and/or skidding if ruts exceed the specified depth. With the Unit Manager or his/her representative's approval, the Purchaser may return to the area when the risk of rutting has decreased.

5.4.2 - Skid Trails (2/04)

Skid trails up and down slopes should be avoided. If, however, this is unavoidable, these trails will be left in a non-erodible condition using water bars, logs, and slash. Placing of slash on these skid trails while logging is ongoing may alleviate need for any further action. At the direction of the Sale Administrator, seed, fertilizer, and mulch may also be required.

6 - Safety and Fire Prevention

6.2 - Signing

6.2.1 - Road Posting (10/20)

The Purchaser is responsible for posting and maintaining caution signs on Chain of Lakes Rd and Floodwood Rd prior to beginning operations. The road must be posted at appropriate distances from the sale area to warn of logging activity and truck traffic. Signs must be removed when harvest operations are suspended or completed. The Purchaser will provide these signs.

6.2.2 - Snowmobile Trail Posting (10/20)

The Purchaser is responsible for posting and maintaining caution signs on snowmobile trail #5 prior to beginning operations during the snowmobile season (approximately December 1 to March 31). The trail must be posted at appropriate distances from the sale area to warn of logging activity and truck traffic. Signs must be removed when harvest operations are suspended or completed. The Purchaser will provide these signs.

6.2.3 - Recreational Trail Posting (10/20)

The Purchaser is responsible for posting and maintaining caution signs on the Porterfield Motorcycle Trail prior to beginning operations. The trail must be posted at appropriate distances from the sale area to warn of logging activity and truck traffic at both ends of the trail. Signs must be removed when harvest operations are suspended or completed. The Purchaser will provide these signs.

7 - Other Conditions

7.3 - Contract Modifications

7.3.3 - Modification for Reforestation (8/05)

When contractual work of Purchaser has been accepted for any Payment Unit identified on Sale Area Map, Payment Unit will be eliminated from the Sale Area on written notice so that reforestation operations can begin.

8 - Performance and Settlement

8.3 - Uncompleted or Terminated Contracts

8.3.2 - Completion of Contract, Other (11/16)

Areas of this sale may be difficult to log. Per General Condition & Requirement 3.5 - Adjustment of Quantity, there will be no adjustment to contract volume, but unharvested timber may not be considered a violation of General Condition & Requirement 8.3 - Uncompleted or Terminated Contract. This applies to Payment Unit 11.



TIMBER SALE MAP

This information provided by authority of Part 525, 1994 PA 451, as amended.

Sale Number	Date	
32-002-26	01/14/2026	
Scale	Page	Of
1:15,840	1	4

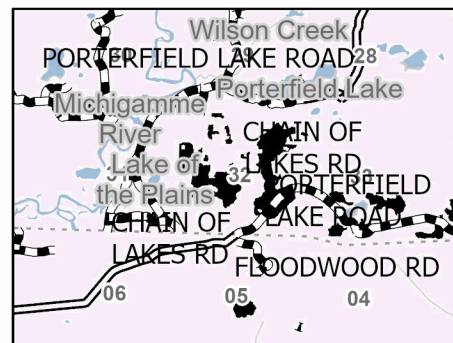
Forest Management Unit	County	Mapped By: Siler
Gwinn Mgt Unit	Marquette	Cruised By: Siler & Gould

Township	Range	Section(s) and Subdivision(s)	NWNW,SW,SE; Sec. 34 SW; Sec. 5 NESW,NWSE; Sec. 22 S1/2SW; Sec. 27 N1/2NW; Sec. 3 NWNW; Sec. 32 NW,NE,N1/2SW,SESW,SE; Sec. 33
44N / 45N	29W		

Cover Type			
A = Aspen	J = Jack Pine	O = Oak	U = Upland Brush
B = Paper Birch	K = Rock	P = Lowland Poplar	UM = Upland Mix Forest
C = Cedar	L = Lowland Brush	Q = Mixed Swamp Conifer	V = Bog or Marsh
D = Treed Bog	LM = Lowland Mix Forest	R = Red Pine	W = White Pine
E = Swamp Hardwoods	M = Maple, Beech, Birch	S = Black Spruce	X = Non Stocked
F = Spruce/Fir	MC = Mixed Conifer	T = Tamarack	Y = Sand
G = Grass	MD = Mixed Deciduous	Z = Water	
H = Hemlock	N = Marsh		

Density	
0 = Non Stocked	5 = Pole Timber Medium
1 = Seedling Sapling Poor	6 = Pole Timber Well
2 = Seedling Sapling Medium	7 = Saw Timber Poor
3 = Seedling Sapling Well	8 = Saw Timber Medium
4 = Pole Timber Poor	9 = Saw Timber Well

Locator Map 1:100,000



Bear Blaster

264.6 Acres

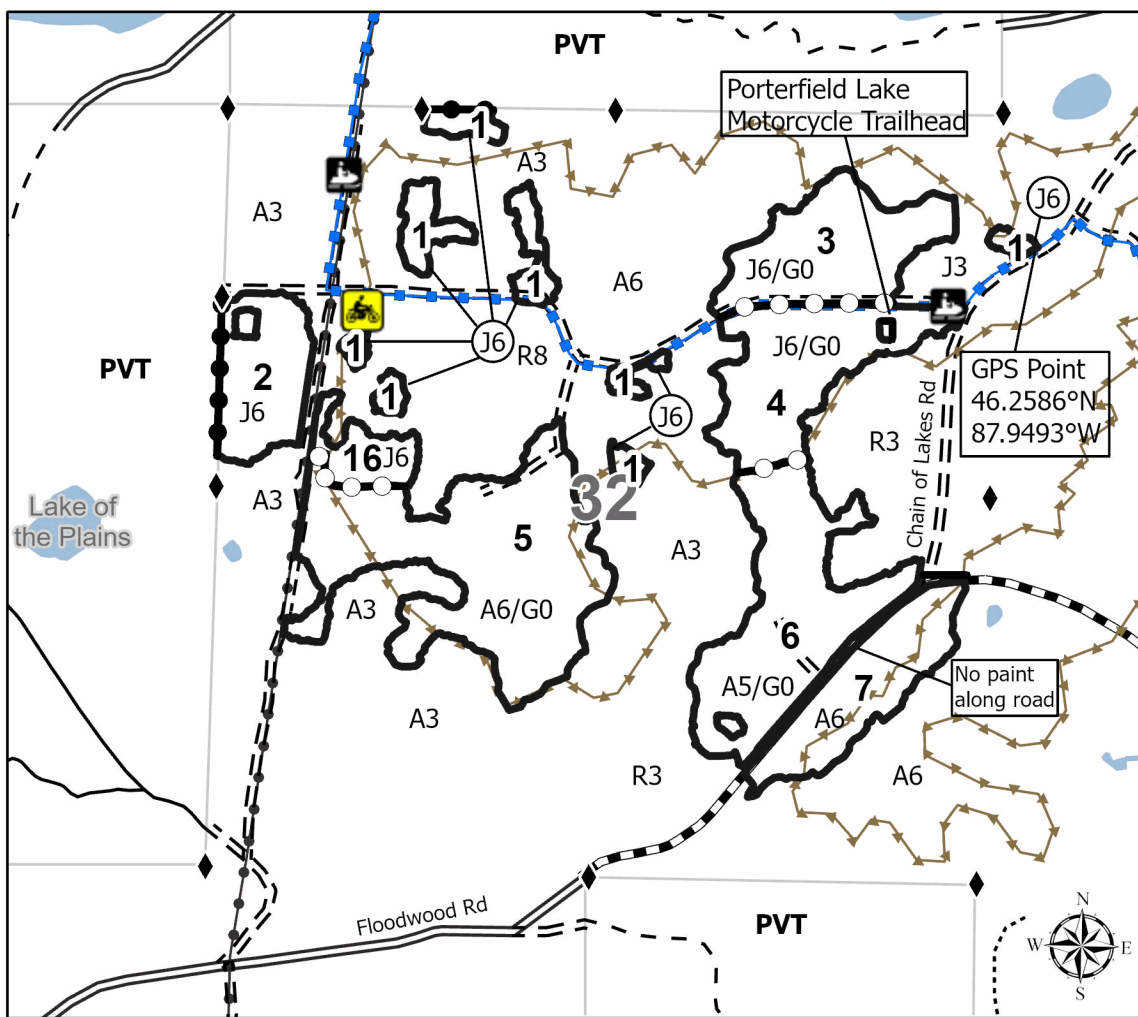
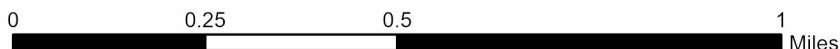
Compartment:

32245

32243

12008

Payment Unit	Acres	Payment Unit	Acres	Payment Unit	Acres
1	14.2	7	17.7	13	13.9
2	14.3	8	7.1	14	7.7
3	21.9	9	19.7	15	13.3
4	22.4	10	7	16	6
5	49.4	11	5.9		
6	32.4	12	11.7		



Legend

- Against State (Red)
- Private Line (Blue)
- Payment Unit (Yellow)
- State Boundary
- Primary Forest Road
- Forest Access Route
- Administrative Access Only
- Paved Road
- Government Gravel/Dirt
- Private Gravel/Dirt
- Survey Grade Corner
- Lakes and Rivers
- Nearby Timber Sale
- Snowmobile Trail
- Powerline
- Motorcycle Trail





TIMBER SALE MAP

This information provided by authority of Part 525, 1994 PA 451, as amended.

Sale Number
32-002-26

Date
01/14/2026

Forest Management Unit	County	Mapped By: Siler	Scale	Page	Of
Gwinn Mgt Unit	Marquette	Cruised By: Siler & Gould	1:15,840	2	4

Township	Range	Section(s) and Subdivision(s)	NWNW,SW,SE; Sec. 34 SW; Sec. 5 NESW,NWSE; Sec. 22 S1/2SW; Sec. 27 N1/2NW; Sec. 3 NWNW; Sec. 32 NW,NE,N1/2SW,SESW,SE; Sec. 33
44N / 45N	29W		

Cover Type			
A = Aspen	J = Jack Pine	O = Oak	U = Upland Brush
B = Paper Birch	K = Rock	P = Lowland Poplar	UM = Upland Mix Forest
C = Cedar	L = Lowland Brush	Q = Mixed Swamp Conifer	V = Bog or Marsh
D = Treed Bog	LM = Lowland Mix Forest	R = Red Pine	W = White Pine
E = Swamp Hardwoods	M = Maple, Beech, Birch	S = Black Spruce	X = Non Stocked
F = Spruce/Fir	MC = Mixed Conifer	T = Tamarack	Y = Sand
G = Grass	MD = Mixed Deciduous	Z = Water	
H = Hemlock	N = Marsh		

Density	
0 = Non Stocked	5 = Pole Timber Medium
1 = Seedling Sapling Poor	6 = Pole Timber Well
2 = Seedling Sapling Medium	7 = Saw Timber Poor
3 = Seedling Sapling Well	8 = Saw Timber Medium
4 = Pole Timber Poor	9 = Saw Timber Well

Locator Map 1:100,000



Bear Blaster

264.6 Acres

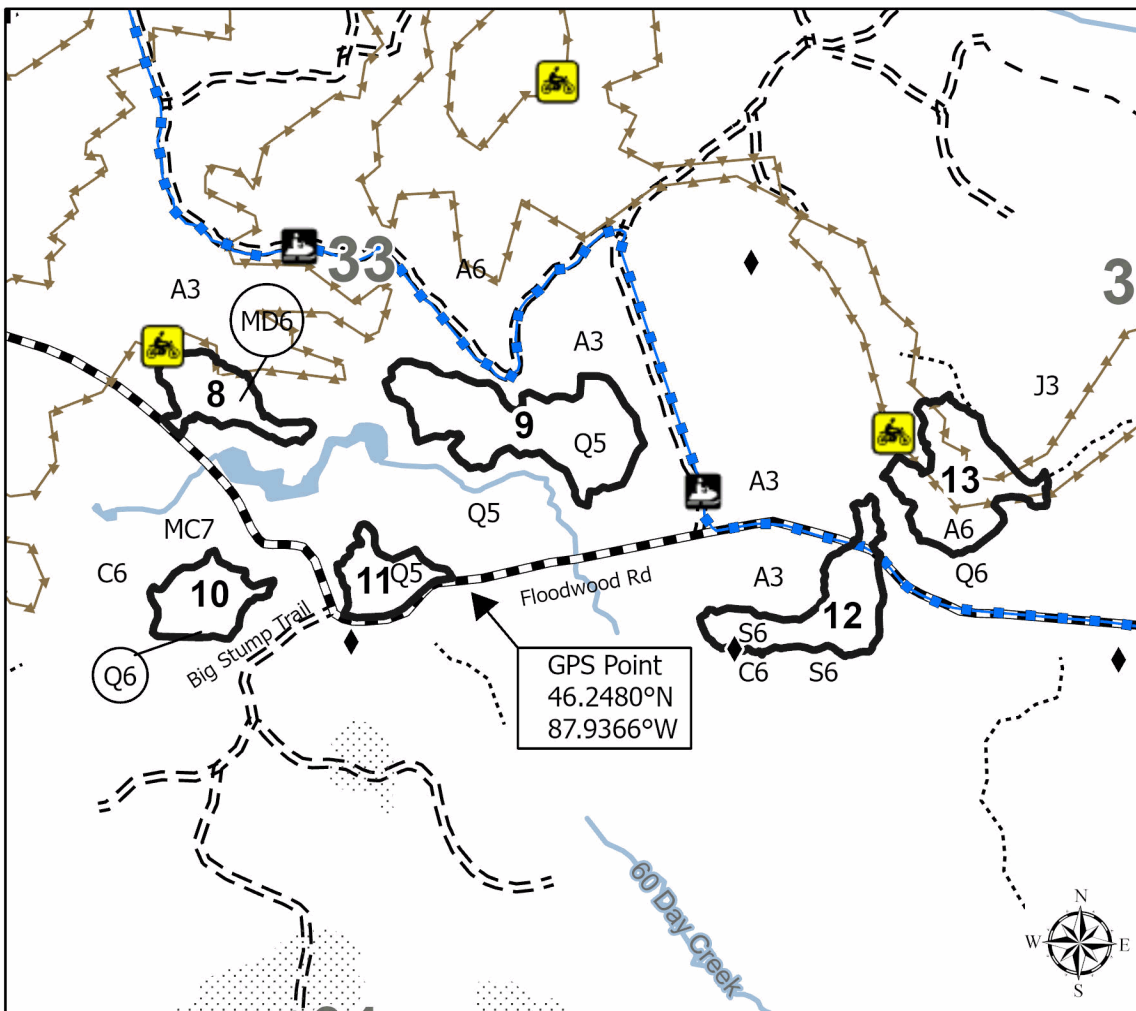
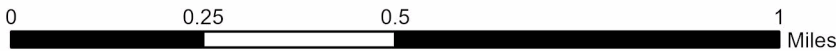
Compartment:

32245

32243

12008

Payment Unit	Acres	Payment Unit	Acres	Payment Unit	Acres
1	14.2	7	17.7	13	13.9
2	14.3	8	7.1	14	7.7
3	21.9	9	19.7	15	13.3
4	22.4	10	7	16	6
5	49.4	11	5.9		
6	32.4	12	11.7		



Legend

- Against State (Red)
- Forest Access Route
- Administrative Access Only
- Government Gravel/Dirt
- Private Gravel/Dirt
- Survey Grade Corner
- Lakes and Rivers
- Streams
- Nearby Timber Sale
- Snowmobile Trail
- Motorcycle Trail





TIMBER SALE MAP

This information provided by authority of Part 525, 1994 PA 451, as amended.

Sale Number 32-002-26	Date 01/14/2026
Scale 1:10,000	Page 3
	Of 4

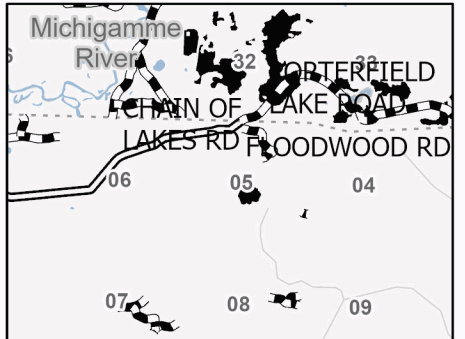
Forest Management Unit Gwinn Mgt Unit	County Dickinson	Mapped By: Siler Cruised By: Siler & Gould
--	---------------------	---

Township 44N / 45N	Range 29W	Section(s) and Subdivision(s)	NWNW,SW,SE; Sec. 34 SW; Sec. 5 NESW,NWSE; Sec. 22 S1/2SW; Sec. 27 N1/2NW; Sec. 3 NWNW; Sec. 32 NW,NE,N1/2SW,SESW,SE; Sec. 33
-----------------------	--------------	----------------------------------	---

Cover Type			
A = Aspen	J = Jack Pine	O = Oak	U = Upland Brush
B = Paper Birch	K = Rock	P = Lowland Poplar	UM = Upland Mix Forest
C = Cedar	L = Lowland Brush	Q = Mixed Swamp Conifer	V = Bog or Marsh
D = Treed Bog	LM = Lowland Mix Forest	R = Red Pine	W = White Pine
E = Swamp Hardwoods	M = Maple, Beech, Birch	S = Black Spruce	X = Non Stocked
F = Spruce/Fir	MC = Mixed Conifer	T = Tamarack	Y = Sand
G = Grass	MD = Mixed Deciduous	Z = Water	
H = Hemlock	N = Marsh		

Density	
0 = Non Stocked	5 = Pole Timber Medium
1 = Seedling Sapling Poor	6 = Pole Timber Well
2 = Seedling Sapling Medium	7 = Saw Timber Poor
3 = Seedling Sapling Well	8 = Saw Timber Medium
4 = Pole Timber Poor	9 = Saw Timber Well

Locator Map 1:100,000



Payment Unit	Acres	Payment Unit	Acres	Payment Unit	Acres
1	14.2	7	17.7	13	13.9
2	14.3	8	7.1	14	7.7
3	21.9	9	19.7	15	13.3
4	22.4	10	7	16	6
5	49.4	11	5.9		
6	32.4	12	11.7		

Bear Blaster

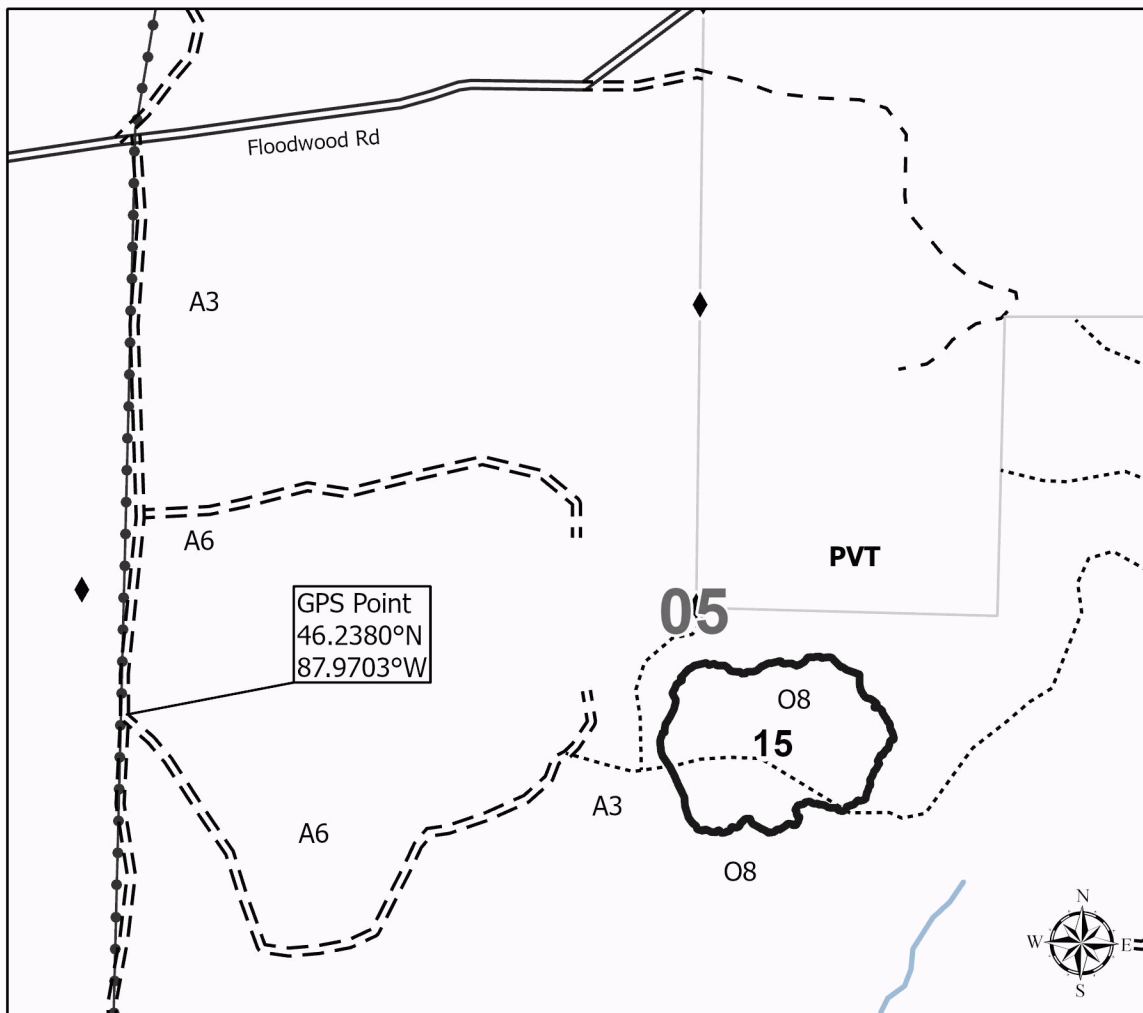
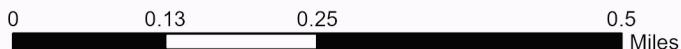
264.6 Acres

Compartment:

32245

32243

12008



Legend

- Against State (Red)
- State Boundary
- Primary Forest Road
- Forest Access Route
- Administrative Access Only
- Private Gravel/Dirt
- Survey Grade Corner
- Streams
- Nearby Timber Sale
- Powerline





TIMBER SALE MAP

This information provided by authority of Part 525, 1994 PA 451, as amended.

Sale Number 32-002-26	Date 01/14/2026
Scale 1:10,000	Page 4
	Of 4

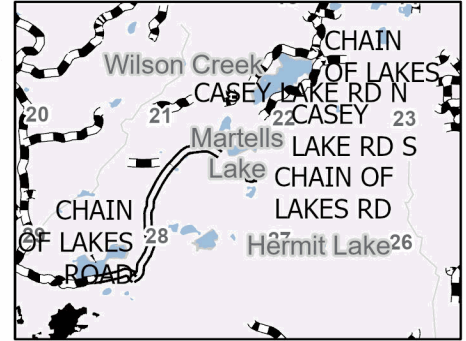
Forest Management Unit Gwinn Mgt Unit	County Marquette	Mapped By: Siler Cruised By: Siler & Gould
--	---------------------	---

Township 44N / 45N	Range 29W	Section(s) and Subdivision(s) NWNW,SW,SE; Sec. 34 SW; Sec. 5 NESW,NWSE; Sec. 22 S1/2SW; Sec. 27 N1/2NW; Sec. 3 NWNW; Sec. 32 NW,NE,N1/2SW,SESW,SE; Sec. 33
-----------------------	--------------	--

Cover Type			
A = Aspen	J = Jack Pine	O = Oak	U = Upland Brush
B = Paper Birch	K = Rock	P = Lowland Poplar	UM = Upland Mix Forest
C = Cedar	L = Lowland Brush	Q = Mixed Swamp Conifer	V = Bog or Marsh
D = Treed Bog	LM = Lowland Mix Forest	R = Red Pine	W = White Pine
E = Swamp Hardwoods	M = Maple, Beech, Birch	S = Black Spruce	X = Non Stocked
F = Spruce/Fir	MC = Mixed Conifer	T = Tamarack	Y = Sand
G = Grass	MD = Mixed Deciduous	Z = Water	
H = Hemlock	N = Marsh		

Density	
0 = Non Stocked	5 = Pole Timber Medium
1 = Seedling Sapling Poor	6 = Pole Timber Well
2 = Seedling Sapling Medium	7 = Saw Timber Poor
3 = Seedling Sapling Well	8 = Saw Timber Medium
4 = Pole Timber Poor	9 = Saw Timber Well

Locator Map 1:100,000



Bear Blaster

264.6 Acres

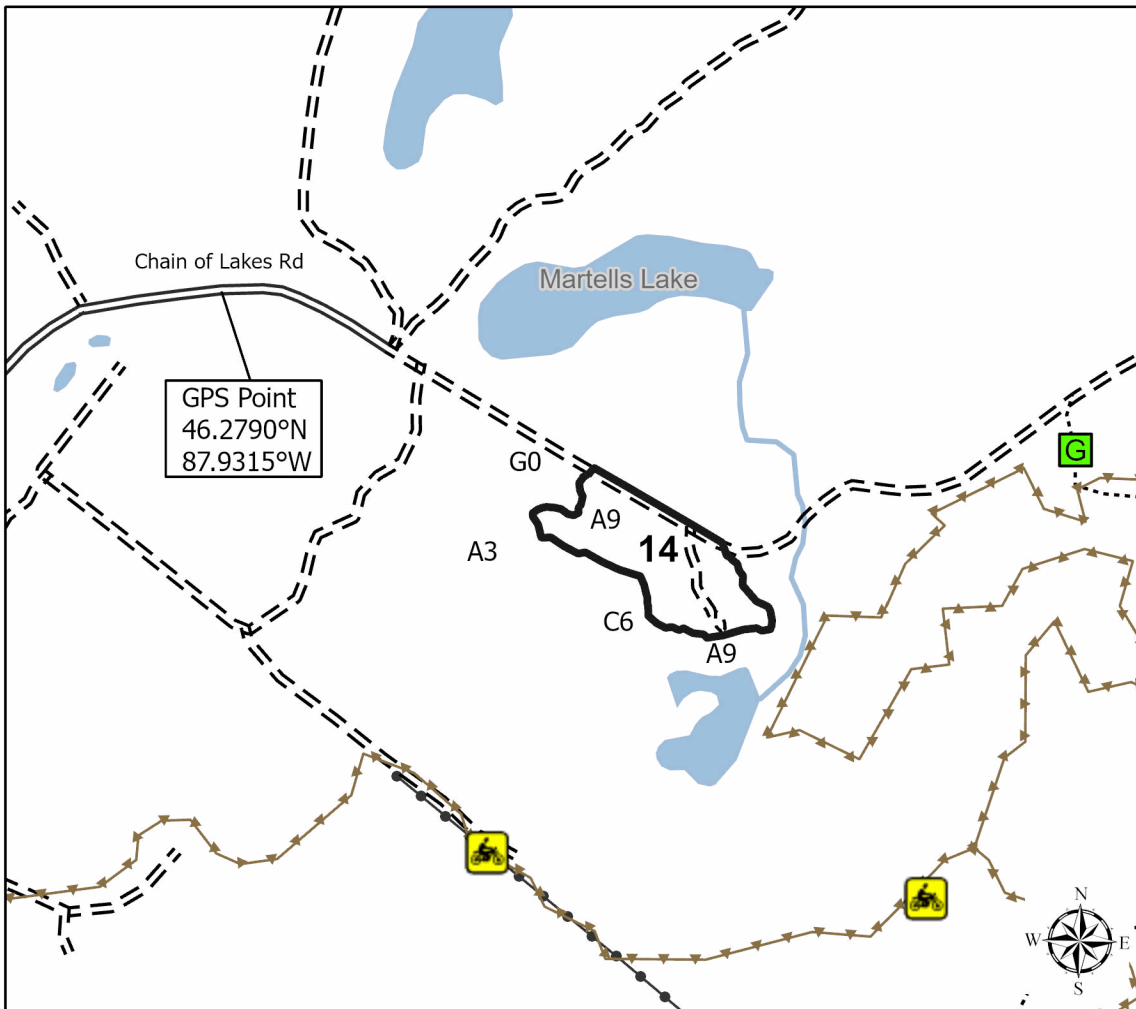
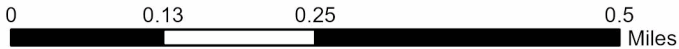
Compartment:

32245

32243

12008

Payment Unit	Acres	Payment Unit	Acres	Payment Unit	Acres
1	14.2	7	17.7	13	13.9
2	14.3	8	7.1	14	7.7
3	21.9	9	19.7	15	13.3
4	22.4	10	7	16	6
5	49.4	11	5.9		
6	32.4	12	11.7		



Legend

- Against State (Red)
- Primary Forest Road
- Forest Access Route
- Administrative Access Only
- Private Gravel/Dirt
- Gate
- Lakes and Rivers
- Streams
- Nearby Timber Sale
- Powerline
- Motorcycle Trail



TIMBER SALE INFORMATION

Vicious Ditches (32-007-26)

T43N, R24W, SEC. 18; T43N, R24W, SEC. 19; T43N, R24W, SEC. 20; T43N, R24W, SEC. 29.
Marquette County (Advertised Price \$10,652.80)

SALE NOTE: This sale has several specs that restrict logging operations, i.e, 4.4.1 - Private property access; 5.2.3.3 Bark Slippage Restriction; and 5.2.3.1 Operating Restrictions.

Access may be through private land.

A timber sale contract for this lump sum, sealed bid timber sale will be awarded to the responsible bidder offering the highest sealed bid price. All units of volume listed below were estimated using the Inventory Manager computer program and the new Michigan taper model. Bids must be at or above the following advertised price for each product and species:

<u>PRODUCTS & SPECIES</u>	<u>ESTIMATED UNITS*</u>	<u>ADVERTISED PRICE</u>
Sawtimber		
Basswood	13.5 MBF	\$ 65.00 / MBF
Red Maple	3.1 MBF	\$ 152.00 / MBF
Sugar Maple	4.4 MBF	\$ 234.00 / MBF
Pulpwood		
Balsam Fir	95 Cords	\$ 12.30 / Cord
Balsam Poplar	8 Cords	\$ 20.85 / Cord
European Larch	7 Cords	\$ 14.60 / Cord
Mixed Hardwood	139 Cords	\$ 14.45 / Cord
N. White Cedar	5 Cords	\$ 6.30 / Cord
Quaking Aspen	111 Cords	\$ 20.85 / Cord
Sugar Maple	168 Cords	\$ 14.45 / Cord
White Spruce	4 Cords	\$ 13.75 / Cord

* The total volume is statistically estimated within plus (+) or minus (-) 28.68 percent. There are an estimated 586 cords on this timber sale, plus or minus 168 cords at the 95% confidence level. The estimated units are final and not subject to adjustment. Prospective bidders are urged to examine this timber and to make their own estimates of quantity and quality.

BOND AND PAYMENT SCHEDULE:

1. A bond in the amount of \$1,065.00 to insure faithful performance of the conditions of the contract will be deposited by the successful bidder within 21 days of the sale award.
2. Cutting in any sale or unit without the required advance payment would be considered a trespass.
3. Total payment must be paid in advance or according to the following schedule :
 - (a) Ten percent (10%) of the sale value must be paid within 21 days of the sale award.
 - (b) The 10% down payment will be credited towards the first unit cut.
 - (c) Payment for each of the following units must be made before cutting begins in that unit:

PAYMENT UNIT NUMBER	PERCENT OF TOTAL SALE VALUE
01	11.6%
02	43.0%
03	45.4%
4. If no cutting takes place, the 10% down payment will not be refunded.
5. Operations on the contract issued will terminate on 06/30/2029.

SALE STATISTICS

Volumes were calculated in cubic feet using the Michigan taper model. Cubic foot volume includes all wood inside bark for the product indicated. For display purposes, cubic feet were converted to cords and MBF using a simple conversion factor, e.g. 79 cubic feet per cord and 185 cubic feet per MBF. The cubic foot volumes are precise; the cords and MBF volumes are not. Cubic foot volume cannot be directly converted to cords or boards with precision.

SALE VOLUMES

The total estimated sale volume may not equal the sum of the species/products due to the nature of statistical calculations associated with double sampling methodology.

VOLUME			STATISTICAL RANGE IN CORDS	
TOTAL CUBIC FEET	TOTAL CORDS	PERCENT ERROR	MINIMUM	MAXIMUM
46,263	586	28.68%	418	754

VDU VOLUMES

A VDU is a Volume Determination Unit. Volumes and their associated statistics are calculated at the VDU level and summarized to the sale level. There is often a one to one relationship between a VDU and a Payment Unit, but not always, depending on the cruise design. Refer to the VDU TO PAYMENT UNIT table.

	VOLUME			RANGE IN CORDS	
VDU	TOTAL CUBIC FEET	TOTAL CORDS	PERCENT ERROR	MINIMUM	MAXIMUM
5	4,655	59	71.32%	17	101
9	22,761	288	43.18%	164	413
12	18,848	239	45.40%	130	347
TOTAL:	46,263	586		311	860

VDU TO PAYMENT UNIT

When a VDU is associated with more than one Payment Unit (PU), the VDU volumes are assigned to the PU based on acres of the VDU within the PU.

VDU	VDU ACRES	PU	PU ACRES
TOTAL:			

DESCRIPTION OF TIMBER BY PAYMENT UNIT (PU)

PU	MARKET GROUP	PRODUCT	QUANTITY	UNIT	ACRES	ADVERTISE PRICE			
1	Basswood	Sawtimber	4.8	MBF	4.8	\$1,234.10			
	Sugar Maple		1.1	MBF					
	Mixed Hardwood	Pulpwood	24	Cords					
	<i>Basswood</i>		23	<i>Cords</i>					
	<i>Ironwood</i>		1	<i>Cords</i>					
	Sugar Maple		22	Cords					
	TOTAL:								
TOTAL:									
2	Basswood	Sawtimber	7.5	MBF	25.7	\$4,582.65			
	Sugar Maple		1.4	MBF					
	Balsam Fir	Pulpwood	83	Cords					
	European Larch		7	Cords					
	Mixed Hardwood		57	Cords					
	<i>Basswood</i>		54	<i>Cords</i>					
	<i>Ironwood</i>		3	<i>Cords</i>					
	Quaking Aspen		14	Cords					
	Sugar Maple		102	Cords					
	White Spruce		4	Cords					
	TOTAL:								
	TOTAL:								
	3		Basswood	Sawtimber			1.2	MBF	17.9
Red Maple		3.1	MBF						
Sugar Maple		1.9	MBF						
Balsam Fir		Pulpwood	12	Cords					
Balsam Poplar			8	Cords					
Mixed Hardwood			58	Cords					
<i>Basswood</i>			4	<i>Cords</i>					
<i>Ironwood</i>			2	<i>Cords</i>					
<i>Red Maple</i>			52	<i>Cords</i>					
N. White Cedar			5	Cords					
Quaking Aspen			97	Cords					
Sugar Maple			44	Cords					
TOTAL:									
TOTAL:									

Sale Specific Conditions & Requirements

Sale Name: Vicious Ditches

Sale Number: 32-007-26 Seq#: 1

1 - Sale Area

1.2 - Boundaries

1.2.1 - Painted Boundaries (9/19)

The sale boundary and Payment Unit boundaries are marked and identified by blue and red paint. Exterior sale boundary lines against private property are marked with blue paint. Exterior sale boundary lines against state are marked with red paint. The painted boundary line trees are not Included Timber and are to be protected unless marked with orange paint.

2 - Timber Specifications

2.1 - Included Timber

2.1.3 - Cut Tree Marked Unit(s) (12/08)

Within Payment Unit(s) 1-3, all trees are designated for cutting when marked with orange paint above and below stump height, regardless of merchantability. Additionally, within Payment Unit(s) 2 cut all spruce, larch, and balsam fir which meet minimum piece specifications in 2.2 Utilization, and within Payment Unit(s) 3 cut all balsam fir, balsam poplar, and aspen which meet minimum piece specifications in 2.2 Utilization.

2.2 - Utilization

2.2.4 - Skidding Length (12/24)

Unless changed by written agreement, skidding of unlimbed tops and/or lengths over 17 feet is not permissible in Payment Unit(s) 1-3.

3 - Payments

3.4 - Damaged Timber

3.4.1 - Damaged Timber (12/24)

General Condition and Requirement 3.4 Damaged Timber, defines liquidated damages for undesignated live merchantable trees which are cut or injured. In addition, extreme care should be taken to avoid damage to tree seedlings and saplings.

No damage is acceptable to undesignated live merchantable trees. Within the Sale Area, if more than 5% of trees (> 4.5" DBH) within a specified area of the sale are damaged, liquidated damages will be assessed for all trees damaged. Rates will be in accordance with General Condition and Requirement 3.4 Damaged Timber.

3.4.3 - Special Protection Areas (8/11)

The Purchaser shall protect special protection areas from damage by the Purchaser's operations. Special protection areas are excluded from the sale area and delineated on the map. The Purchaser shall not cut live or dead trees within special protection areas. No equipment may drive within these areas. If the Purchaser's operations have cut or damaged special protection areas through carelessness, the Purchaser shall pay triple stumpage, agreed and liquidated damages for each acre or part thereof cut or damaged. Such payment does not constitute ownership of the undesignated timber.

4 - Transportation

4.1 - Construction

4.1.3 - Slash and Earthen Piles (8/04)

Piles or windrows of earth along roads and landings that have been widened or constructed shall be leveled. Slash from road maintenance or construction, including stumps, shall be scattered, not left in windrows, and kept a minimum of 10 feet back from the road edge.

4.1.4 - Timber Removed for Construction (3/23)

Trees cut or damaged in the process of pre-approved road, landing, or skid trail construction will be decked in an area separate from other Designated Timber and not removed until measured by the Sale Administrator. Payment will be made at contract prices or average prices, if not on the contract.

4.1.6 - Road Construction (4/24)

Construction of new roads or improvements of existing roads shall be done in such a way as to minimize the environmental and visual impacts. Merchantable trees shall be cut and utilized unless otherwise directed. Non-merchantable trees shall be severed and laid flat on the ground. Slash shall be scattered, not left in windrows, and kept a minimum of 10 feet back from the road edge. Stumps shall be set upright, not left on edge, and be moved at least 10 feet away from the road edge. Disturbed soil shall be feathered into the woods and not left in berms or windrows.

4.1.7 - Road Closure (10/11)

All new roads built into the sale must be blocked to vehicle traffic upon completion of the sale. Overgrown roads that are reopened shall be considered new roads. In general, this will require constructing a four (4') foot high berm of stumps and logs covered with earth. Contact the Sale Administrator for specific details of design and placement.

4.2 - Maintenance

4.2.1 - Hauling Restriction (12/08)

Hauling may be restricted on forest roads by the Unit Manager or his/her representative. The restriction may occur during wet weather conditions.

4.2.2 - Fill Material (4/07)

To maintain roads, fill material may be needed in areas where "holes" exist or may be expected to develop. This fill material should be placed before trucking begins. Contact the Sale Administrator regarding the availability of onsite sand or gravel from adjacent State-owned lands.

4.2.3 - Road maintenance (8/13)

The following road maintenance may be needed: Within 30 days of completion of hauling, or if no hauling occurs for 30 days, the road must be maintained and graded. This includes cleaning of drainage areas, grading, crowning and filling with gravel, if necessary. Damages will be assessed if grading/repair does not occur.

4.2.4 - Grading (10/16)

For completion of the sale, state forest roads must be graded. In general, this will require a road grader or bulldozer to shape up the roads after forest products have been hauled offsite. This includes cleaning of drainage areas, grading, crowning and filling with gravel, if necessary. The grading equipment to be used must be approved by the Unit Manager or his/her representative.

4.4 - Access

4.4.1 - Private property access (3/11)

Permission for access across private land is the responsibility of the Purchaser. Should the Purchaser desire to cross private land (Lyme Great Lakes Timberlands), a copy of the written permission from the private landowner may be required by the DNR.

5 - Operations

5.1 - Notification

5.1.1 - Pre-sale Conference (10/25)

A pre-sale conference between the Purchaser and Sale Administrator is required prior to beginning any operations. The Unit Manager or his/her representative must be contacted at least 5 days in advance to schedule the conference.

5.2 - Conduct of Operations

5.2.2 - Hazard Trees/Snags

5.2.2.1 - Den Trees (10/16)

Obvious hollow and/or den trees shall be protected and left standing unless they are a safety hazard.

5.2.3 - Operating Restrictions

5.2.3.1 - Operating Restrictions (9/11)

Within Payment Unit(s) 3, unless changed by written agreement, cutting and skidding are limited to the period of 12/01 to 04/01. This restriction is due to deer winter ranges.

5.2.3.3 - Bark Slippage Restriction (3/09)

Within Payment Unit(s) 1-3, unless changed by written agreement, cutting and skidding are not permitted during the period of April 15 to July 15. This restriction is because of bark slippage.

5.2.32 - Decking/Landing Restoration (9/13)

All decking and landing areas must have the surface area restored to a condition equal to or better than before. This is to ensure the proper regeneration of the stand. Wood debris, chips and "cookies" from trimmings must be removed or scattered away from landing and loading areas and may not be windrowed on the edge.

5.2.38 - No Decking Against Live Trees (2/04)

Cut products may not be decked against unmarked or designated leave trees.

5.4 - Soil Protection

5.4.1 - Rutting Restriction, General (7/16)

Operations are to cease immediately if equipment and weather conditions result in rutting of roads and/or skid trails which are 12 inches or greater in depth and 50 feet in length. The Unit Manager or his/her representative may restrict hauling and/or skidding if ruts exceed the specified depth. With the Unit Manager or his/her representative's approval, the Purchaser may return to the area when the risk of rutting has decreased.

5.4.2 - Skid Trails (2/04)

Skid trails up and down slopes should be avoided. If, however, this is unavoidable, these trails will be left in a non-erodible condition using water bars, logs, and slash. Placing of slash on these skid trails while logging is ongoing may alleviate need for any further action. At the direction of the Sale Administrator, seed, fertilizer, and mulch may also be required.

5.8 - Protection of Endangered Species

5.8.5 - Protection of Raptor Nests (3/13)

All trees with raptor nests will be protected if found during harvesting operations. Notification will be made to the Unit Manager or his/her representative who will notify the Wildlife Biologist so an onsite evaluation and recommendation can be made, if necessary.

6 - Safety and Fire Prevention

6.2 - Signing

6.2.1 - Road Posting (10/20)

The Purchaser is responsible for posting and maintaining caution signs on Escanaba River Road and Hamilton Homestead Road prior to beginning operations. The road must be posted at appropriate distances from the Sale Area to warn of logging activity and truck traffic. Signs must be removed when harvest operations are suspended or completed. The Purchaser will provide these signs.



TIMBER SALE MAP

This information provided by authority of Part 525, 1994 PA 451, as amended.

Sale Number

32-007-26

Date

01/06/2026

Forest Management Unit

Gwinn Mgt Unit

County

Marquette

Mapped By: Yeo

Cruised By: Gwinn Staff

Scale

1:15,840

Page

1

Of

1

Township
43N

Range
24W

Section(s) and
Subdivision(s) Sec. 18 S1/2SE; Sec. 19 N1/2NE; Sec. 20 NWNW,SESW; Sec. 29 NENW;

Cover Type

A = Aspen	J = Jack Pine	O = Oak	U = Upland Brush
B = Paper Birch	K = Rock	P = Lowland Poplar	UM = Upland Mix Forest
C = Cedar	L = Lowland Brush	Q = Mixed Swamp Conifer	V = Bog or Marsh
D = Treed Bog	LM = Lowland Mix Forest	R = Red Pine	W = White Pine
E = Swamp Hardwoods	M = Maple, Beech, Birch	S = Black Spruce	X = Non Stocked
F = Spruce/Fir	MC = Mixed Conifer	T = Tamarack	Y = Sand
G = Grass	MD = Mixed Deciduous	Z = Water	
H = Hemlock	N = Marsh		

Density

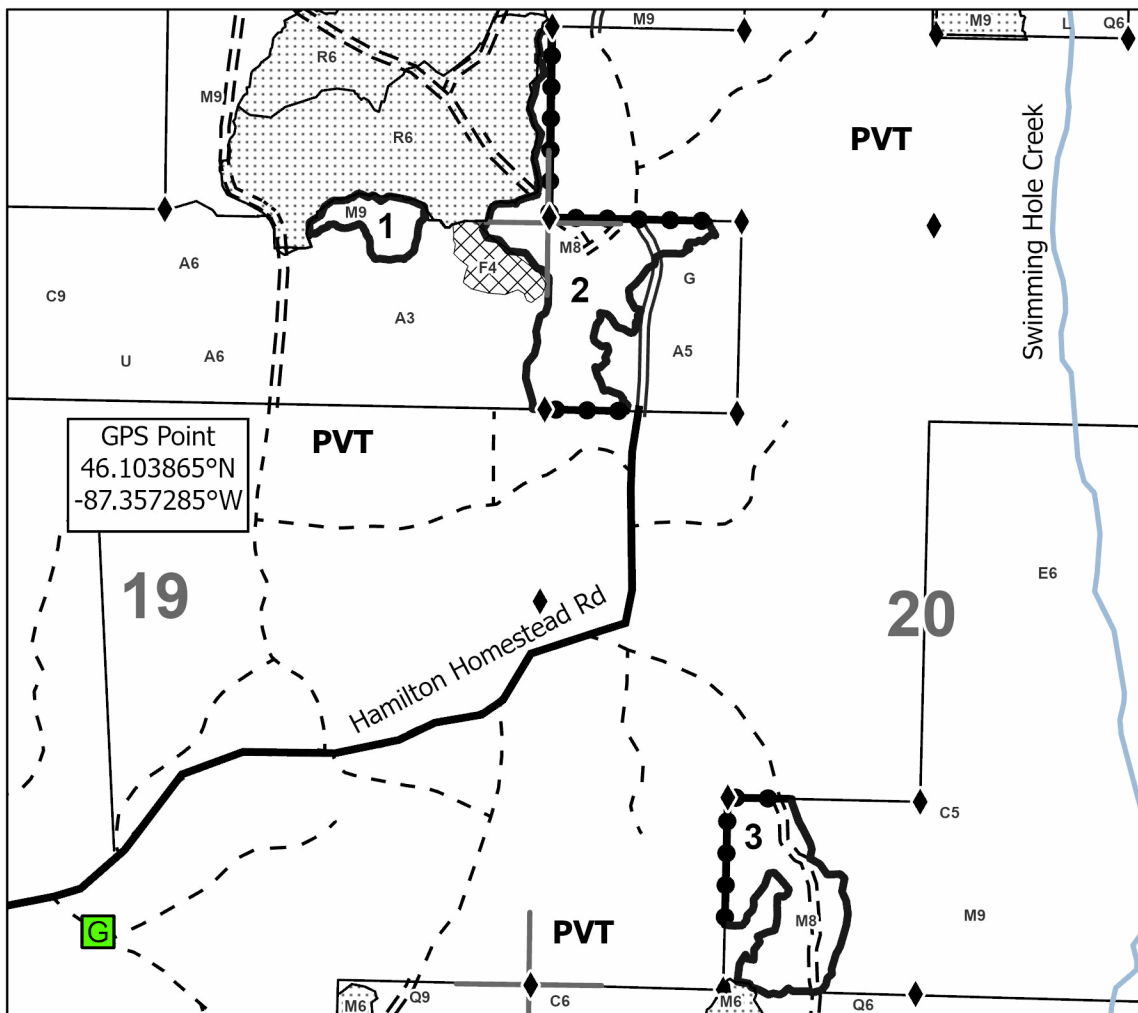
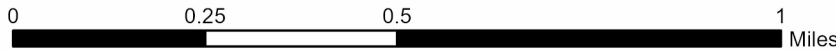
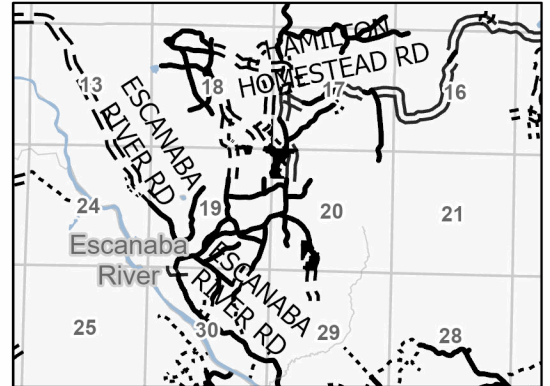
0 = Non Stocked	5 = Pole Timber Medium
1 = Seedling Sapling Poor	6 = Pole Timber Well
2 = Seedling Sapling Medium	7 = Saw Timber Poor
3 = Seedling Sapling Well	8 = Saw Timber Medium
4 = Pole Timber Poor	9 = Saw Timber Well

Payment Unit Number	Acres
1	4.8
2	25.7
3	17.9

Vicious Ditches

**48.4 Acres
Compartment 80**

Locator Map 1:100,000



Legend

- Payment Unit
- State Forests
- Against State (Red)
- Private Line (Blue)
- Streams
- Easement Road
- Primary Forest Road
- Forest Access Route
- Private Gravel/Dirt
- Survey Grade Corner
- Gate
- Nearby Timber Sale
- Special Protection Area

Use QR Code to open Map in App



TIMBER SALE INFORMATION

Peshekee Supreme (32-004-25)
T48N, R30W, SEC. 12; T48N, R30W, SEC. 13.
Marquette County (Advertised Price \$5,399.40)

SALE NOTE: Four-year timber sale contract restricted to winter frozen during 12/1 to 4/1.

A timber sale contract for this lump sum, sealed bid timber sale will be awarded to the responsible bidder offering the highest sealed bid price. All units of volume listed below were estimated using the Inventory Manager computer program and the new Michigan taper model. Bids must be at or above the following advertised price for each product and species:

<u>PRODUCTS & SPECIES</u>	<u>ESTIMATED UNITS*</u>	<u>ADVERTISED PRICE</u>
Sawtimber		
Paper Birch	2.5 MBF	\$ 49.00 / MBF
Sugar Maple	0.8 MBF	\$ 156.00 / MBF
Pulpwood		
Balsam Fir	39 Cords	\$ 8.20 / Cord
Mixed Hardwood	281 Cords	\$ 9.65 / Cord
Mixed Spruce	40 Cords	\$ 9.15 / Cord
Paper Birch	85 Cords	\$ 9.85 / Cord
Quaking Aspen	66 Cords	\$ 13.90 / Cord

* The total volume is statistically estimated within plus (+) or minus (-) 20.77 percent. There are an estimated 518 cords on this timber sale, plus or minus 108 cords at the 95% confidence level. The estimated units are final and not subject to adjustment. Prospective bidders are urged to examine this timber and to make their own estimates of quantity and quality.

BOND AND PAYMENT SCHEDULE:

1. A bond in the amount of \$540.00 to insure faithful performance of the conditions of the contract will be deposited by the successful bidder within 21 days of the sale award.
2. Cutting in any sale or unit without the required advance payment would be considered a trespass.
3. Total payment must be paid in advance or according to the following schedule :
 - (a) Ten percent (10%) of the sale value must be paid within 21 days of the sale award.
 - (b) The 10% down payment will be credited towards the first unit cut.
 - (c) Payment for each of the following units must be made before cutting begins in that unit:

PAYMENT UNIT NUMBER	PERCENT OF TOTAL SALE VALUE
01	40.9%
02	13.0%
03	25.9%
04	20.2%
4. If no cutting takes place, the 10% down payment will not be refunded.
5. Operations on the contract issued will terminate on 06/30/2030.

SALE STATISTICS

Volumes were calculated in cubic feet using the Michigan taper model. Cubic foot volume includes all wood inside bark for the product indicated. For display purposes, cubic feet were converted to cords and MBF using a simple conversion factor, e.g. 79 cubic feet per cord and 185 cubic feet per MBF. The cubic foot volumes are precise; the cords and MBF volumes are not. Cubic foot volume cannot be directly converted to cords or boards with precision.

SALE VOLUMES

The total estimated sale volume may not equal the sum of the species/products due to the nature of statistical calculations associated with double sampling methodology.

VOLUME		STATISTICAL RANGE IN CORDS		
TOTAL CUBIC FEET	TOTAL CORDS	PERCENT ERROR	MINIMUM	MAXIMUM
40,883	518	20.77%	410	625

VDU VOLUMES

A VDU is a Volume Determination Unit. Volumes and their associated statistics are calculated at the VDU level and summarized to the sale level. There is often a one to one relationship between a VDU and a Payment Unit, but not always, depending on the cruise design. Refer to the VDU TO PAYMENT UNIT table.

VDU	VOLUME		PERCENT ERROR	RANGE IN CORDS	
	TOTAL CUBIC FEET	TOTAL CORDS		MINIMUM	MAXIMUM
64	16,459	208	35.98%	133	283
65	8,059	102	61.55%	39	165
67	4,716	60	41.62%	35	85
68	11,649	147	32.85%	99	196
TOTAL:	40,883	518		306	729

VDU TO PAYMENT UNIT

When a VDU is associated with more than one Payment Unit (PU), the VDU volumes are assigned to the PU based on acres of the VDU within the PU.

VDU	VDU ACRES	PU	PU ACRES
TOTAL:			

DESCRIPTION OF TIMBER BY PAYMENT UNIT (PU)

PU	MARKET GROUP	PRODUCT	QUANTITY	UNIT	ACRES	ADVERTISE PRICE	
1	Paper Birch	Sawtimber	1.7	MBF	17.4	\$2,204.35	
	Balsam Fir	Pulpwood	15	Cords			
	Mixed Hardwood		100	Cords			
	<i>Black Cherry</i>		2	Cords			
	<i>Red Maple</i>		50	Cords			
	<i>Sugar Maple</i>		48	Cords			
	Mixed Spruce		8	Cords			
	<i>White Spruce</i>		8	Cords			
	Paper Birch		41	Cords			
	Quaking Aspen		40	Cords			
2	Paper Birch		Sawtimber	0.8	MBF	10.2	\$704.60
	Sugar Maple	Pulpwood	0.8	MBF			
	Mixed Hardwood		55	Cords			
	<i>Black Cherry</i>		3	Cords			
	<i>Red Maple</i>		2	Cords			
	<i>Sugar Maple</i>		50	Cords			
	Paper Birch		1	Cords			
	3		Balsam Fir	Pulpwood	21		
Mixed Hardwood			86		Cords		
<i>Red Maple</i>		67	Cords				
<i>Sugar Maple</i>		19	Cords				
Mixed Spruce		9	Cords				
<i>Black Spruce</i>		2	Cords				
<i>White Spruce</i>		7	Cords				
Paper Birch		32	Cords				
4	Balsam Fir	Pulpwood	3	Cords	8.4	\$1,090.80	
	Mixed Hardwood		40	Cords			
	<i>Black Cherry</i>		5	Cords			
	<i>Red Maple</i>		23	Cords			
	<i>Sugar Maple</i>		12	Cords			
	Mixed Spruce		23	Cords			
	<i>Black Spruce</i>		11	Cords			
	<i>White Spruce</i>		12	Cords			
	Paper Birch		11	Cords			
	Quaking Aspen		26	Cords			
TOTAL:			3.3	MBF			
TOTAL:			511	Cords			

Sale Specific Conditions & Requirements

Sale Name: Peshekee Supreme

Sale Number: 32-004-25 Seq#: 3

1 - Sale Area

1.2 - Boundaries

1.2.1 - Painted Boundaries (9/19)

The sale boundary and Payment Unit boundaries are marked and identified by blue, red and yellow paint or are unmarked and identified by a road. Exterior sale boundary lines against private property are marked with blue paint. Exterior sale boundary lines against state are marked with red paint, with the exception of the boundaries that are against the Huron Bay Grade Road in Payment Unit(s) 1 and 4, which are unpainted and designated by the Huron Bay Grade Road. Interior Payment Unit boundaries are marked with yellow paint. Retention patches are marked with red paint; no harvesting activities may occur within these areas. The painted boundary line trees are not Included Timber and are to be protected unless marked with orange paint. Yellow painted trees designating an interior Payment Unit boundary are only to be cut when all surrounding Payment Units have been paid.

2 - Timber Specifications

2.1 - Included Timber

2.1.1 - Clearcut Unit(s) with Unmerchantable Trees (6/14)

Within Payment Unit(s) 1 and 4, cut all trees that are two (2) inches or more at DBH, except do not cut oak, yellow birch, cedar, hemlock, white pine, or red pine.

2.1.3 - Cut Tree Marked Unit(s) (12/08)

Within Payment Unit(s) 2, all trees are designated for cutting when marked with orange paint above and below stump height, regardless of merchantability. In addition, cut all spruce and fir which meet minimum piece specifications in 2.2 Utilization.

2.1.7 - Leave Tree Marked Unit(s) (6/14)

Within Payment Unit(s) 3, cut all trees that are two (2) inches or more at DBH, except do not cut oak, yellow birch, cedar, hemlock, red pine, white pine, or trees marked with green paint above and below stump height.

3 - Payments

3.4 - Damaged Timber

3.4.1 - Damaged Timber (12/24)

General Condition and Requirement 3.4 Damaged Timber, defines liquidated damages for undesignated live merchantable trees which are cut or injured. In addition, extreme care should be taken to avoid damage to tree seedlings and saplings.

No damage is acceptable to undesignated live merchantable trees. Within the Sale Area, if more than 5% of trees (> 4.5" DBH) within a specified area of the sale are damaged, liquidated damages will be assessed for all trees damaged. Rates will be in accordance with General Condition and Requirement 3.4 Damaged Timber.

4 - Transportation

4.1 - Construction

4.1.3 - Slash and Earthen Piles (8/04)

Piles or windrows of earth along roads and landings that have been widened or constructed shall be leveled. Slash from road maintenance or construction, including stumps, shall be dispersed throughout the sale.

4.1.4 - Timber Removed for Construction (3/23)

Trees cut or damaged in the process of pre-approved road, landing, or skid trail construction will be decked in an area separate from other Designated Timber and not removed until measured by the Sale Administrator. Payment will be made at contract prices or average prices, if not on the contract.

4.1.6 - Road Construction (4/24)

Construction of new roads or improvements of existing roads shall be done in such a way as to minimize the environmental

and visual impacts. Merchantable trees shall be cut and utilized unless otherwise directed. Non-merchantable trees shall be severed and laid flat on the ground. Slash shall be scattered, and not left in windrows and kept a minimum of 10 feet back from the road edge. Stumps shall be set upright, not left on edge, and be moved at least 10 feet away from the road edge. Disturbed soil shall be feathered into the woods and not left in berms or windrows.

4.1.7 - Road Closure (10/11)

All new roads built into the sale must be blocked to vehicle traffic upon completion of the sale. Overgrown roads that are reopened shall be considered new roads. In general, this will require constructing a four (4') foot high berm of stumps and logs covered with earth. Contact the Sale Administrator for specific details of design and placement.

4.2 - Maintenance

4.2.3 - Road maintenance (8/13)

The following road maintenance may be needed: Within 60 days of completion of hauling, or if no hauling occurs for 60 days, the road may need to be maintained and graded. This includes cleaning of drainage areas, grading, crowning and filling with gravel, if necessary. Damages will be assessed if grading/repair does not occur.

4.3 - Public Right-of-Way

4.3.2 - County R-O-W (12/06)

The County must be contacted prior to crossing or harvesting in the County Road R-O-W. This applies to all Payment Units along the Huron Bay Grade.

5 - Operations

5.1 - Notification

5.1.1 - Pre-sale Conference (10/16)

A pre-sale conference onsite between the Purchaser and Sale Administrator is required prior to beginning any operations. The Unit Manager or his/her representative must be contacted at least 3 days in advance to schedule the conference.

5.2 - Conduct of Operations

5.2.3 - Operating Restrictions

5.2.3.1 - Operating Restrictions (9/11)

Within Payment Unit(s) 1-4, unless changed by written agreement, cutting and skidding are limited to winter frozen conditions during the period of December 1 to April 1. This restriction is due to areas of sensitive soils.

5.2.3.2 - Decking/Landing Restoration (9/13)

All decking and landing areas must have the surface area restored to a condition equal to or better than before. This is to ensure the proper regeneration of the stand. Wood debris, chips and "cookies" from trimmings must be removed or scattered away from landing and loading areas and may not be windrowed on the edge.

5.2.3.7 - No Decking Areas (12/08)

No decking is allowed within 50 feet of Huron Bay Grade Road without permission of the Unit Manager or his/her representative.

5.2.3.8 - No Decking Against Live Trees (2/04)

Cut products may not be decked against unmarked or designated leave trees.

5.4 - Soil Protection

5.4.1 - Rutting Restriction, General (7/16)

Operations are to cease immediately if equipment and weather conditions result in rutting of roads and/or skid trails which is 12 inches or greater in depth and 50 feet in length. The Unit Manager or his/her representative may restrict hauling and/or skidding if ruts exceed the specified depth. With the Unit Manager or his/her representative's approval, the Purchaser may return to the area when the risk of rutting has decreased.

5.4.4 - Slope Protection (9/19)

Skid trails and roads on slopes shall be water barred with slash and stumps as soon as use is complete to prevent erosion.

6 - Safety and Fire Prevention

6.2 - Signing

6.2.1 - Road Posting (10/20)

The Purchaser is responsible for posting and maintaining caution signs on the Huron Bay Grade prior to beginning operations. The road must be posted at appropriate distances from the Sale Area to warn of logging activity and truck traffic. Signs must be removed when harvest operations are suspended or completed. The Purchaser will provide these signs.



TIMBER SALE MAP

This information provided by authority of Part 525, 1994 PA 451, as amended.

Sale Number

32-004-25

Date

06/25/2025

Forest Management Unit

Gwinn Mgt Unit

County

Marquette

Mapped By: Gould

Cruised By: Gould

Scale

1:15,840

Page

1

Of

1

Township
48N

Range
30W

Section(s) and
Subdivision(s) Sec. 12 E1/2SE; Sec. 13 E1/2NW;

Cover Type

A = Aspen	J = Jack Pine	O = Oak	U = Upland Brush
B = Paper Birch	K = Rock	P = Lowland Poplar	UM = Upland Mix Forest
C = Cedar	L = Lowland Brush	Q = Mixed Swamp Conifer	V = Bog or Marsh
D = Treed Bog	LM = Lowland Mix Forest	R = Red Pine	W = White Pine
E = Swamp Hardwoods	M = Maple, Beech, Birch	S = Black Spruce	X = Non Stocked
F = Spruce/Fir	MC = Mixed Conifer	T = Tamarack	Y = Sand
G = Grass	MD = Mixed Deciduous	Z = Water	
H = Hemlock	N = Marsh		

Density

0 = Non Stocked	5 = Pole Timber Medium
1 = Seedling Sapling Poor	6 = Pole Timber Well
2 = Seedling Sapling Medium	7 = Saw Timber Poor
3 = Seedling Sapling Well	8 = Saw Timber Medium
4 = Pole Timber Poor	9 = Saw Timber Well

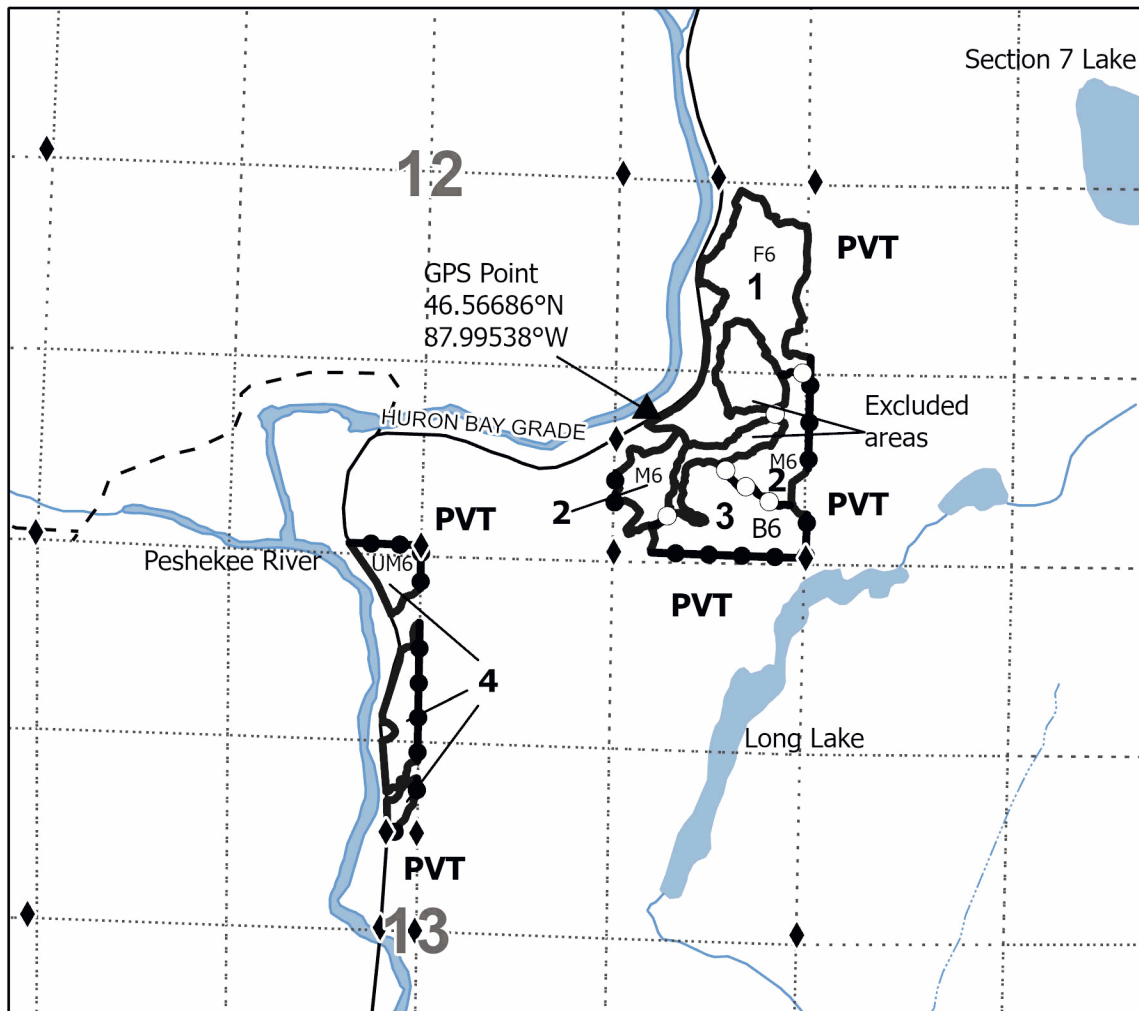
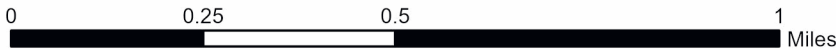
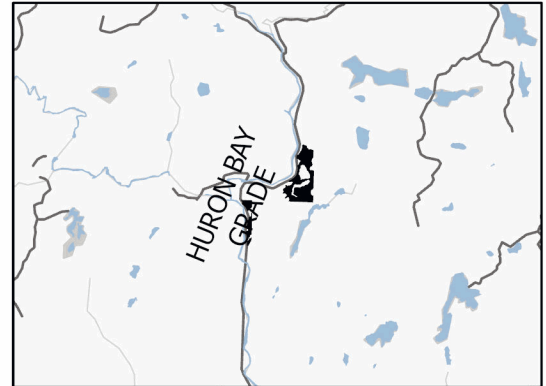
Payment Unit Number	Acres
1	17.4
2	10.2
3	10.5
4	8.4

Peshekee Supreme

46.5 Acres

Compartment 32215

Locator Map 1:100,000



Legend

- Against State (Red)
- Private Line (Blue)
- Payment Unit (Yellow)
- Lakes and Rivers
- Paved Road
- Private Gravel/Dirt
- Survey Grade Corner

Use QR Code to open Map in App



Bear Blaster (32-002-26)

T44N, R29W, SEC. 3; T44N, R29W, SEC. 5; T45N, R29W, SEC. 22; T45N, R29W,

In response to the notice of sale to be held 2:00 p.m. (local time) on June 15, 2026, I am hereby submitting my sealed bid (firm offer) for the following forest products to be cut. Bids for individual species must be at or above the advertised price. All non-responsive bid forms may be rejected.

<u>PRODUCTS & SPECIES</u>	<u>ESTIMATED VOLUME*</u>	<u>ADVERTISED PRICE</u>	<u>BID PRICE/UNIT</u>
Sawtimber			
Paper Birch	3.1 MBF	\$ 74.00/MBF	\$ _____
Red Oak	29.3 MBF	\$ 140.00/MBF	\$ _____
Pulpwood			
Balsam Fir	25 Cords	\$ 12.30/Cord	\$ _____
Balsam Poplar	27 Cords	\$ 20.85/Cord	\$ _____
Jack Pine	1,925 Cords	\$ 43.80/Cord	\$ _____
Misc. Species 2	22 Cords	\$ 7.50/Cord	\$ _____
Mixed Aspen	2,025 Cords	\$ 20.85/Cord	\$ _____
Mixed Hardwood	243 Cords	\$ 14.45/Cord	\$ _____
Mixed Spruce	565 Cords	\$ 13.75/Cord	\$ _____
Paper Birch	96 Cords	\$ 14.75/Cord	\$ _____
Red Oak	124 Cords	\$ 18.05/Cord	\$ _____
Red Pine	335 Cords	\$ 44.35/Cord	\$ _____
Tamarack	52 Cords	\$ 14.60/Cord	\$ _____
White Pine	34 Cords	\$ 12.15/Cord	\$ _____

*The volumes are statistically estimated within plus (+) or minus (-) 10.30 percent at 95% confidence level. These estimated volumes are final and not subject to adjustment. Prospective bidders are urged to examine this timber and to make their own estimates of quantity and quality.

I understand that any or all bids may be rejected. All bids must be signed and all bid items must be bid or the bid form may be rejected. I also understand that consideration and awarding a contract will be based upon my past performance and ability to complete the contract based upon equipment and staffing subject to my control .

FEDERAL ID: _____ - _____ or SOCIAL SECURITY NUMBER: _____ - _____ - _____

Company or individual bidding: _____

Company representative's name: _____

Address: _____

City: _____ State: _____ Zip: _____

IF AVAILABLE, PLEASE PLACE THE PERSONALIZED LABEL FROM YOUR PROSPECTUS IN THE ABOVE BOX.

Individual or company representative's signature: _____ Date: _____

Phone number : _____ Email (optional): _____

THE WINNING BIDDER MUST COMPLETE THE VERIFICATION OF WORKER'S DISABILITY COMPENSATION ACT COMPLIANCE (ON REVERSE SIDE IF DOUBLE SIDED) WITHIN 21 DAYS OF SALE AWARD DATE



FOR DEPARTMENT USE ONLY
Sale Number (XX - XXX - XX - XX)
Forest Management Unit:

TIMBER SALE VERIFICATION OF WORKER'S DISABILITY COMPENSATION ACT COMPLIANCE

*As required by Act 317, P.A. 1969 (Worker's Compensation) and
Part 5 of Act 451 of 1994, as amended.*

VERIFICATION OF WORKER'S DISABILITY COMPENSATION ACT COMPLIANCE

- This verification must be completed and submitted within 21 days of contract award and prior to the issuance of the timber sale contract.
- In addition, if boxes 2B or 2C are checked, then Notice of Exclusion or Certificate of Insurance must be submitted within twenty-one (21) days of the contract award and prior to the issuance of the timber sale contract.
- All information must be typed or printed except for written signatures.

Please Check Appropriate Categories:

1. My business is organized as (you **must** check one of the boxes below):
 - A. Sole Proprietorship (individual)
 - B. Partnership
 - C. Corporation
2. You **must** check one of the boxes below:
 - A. I certify my business is a sole proprietorship and it has no employees but the sole proprietor. I am not subject to the Worker's Compensation Laws.
 - B. I certify my business has satisfied its obligation to the Worker's Compensation Act through the use of an approved Notice of Exclusion (BWC-337, Rev. 5/96). I will provide a copy of the Notice of Exclusion within 21 days of the contract award. (For questions or a copy of the BWC-337, please call the Worker's Compensation Bureau at 517 -322-1195).
 - C. I certify my business has a Worker's Compensation Policy. I will provide an original Certificate of Insurance within twenty-one (21) days of the contract award.
3. If you have checked item 2(A) or 2(B), you **must** indicate the number of **both** full-time and part-time employees, other than yourself, including family members and active partners (if none, you must enter "0").

_____ Full-time Employees

_____ Part-time Employees

Name of Business		Federal ID (or) Social Security No.	
Address		Telephone ()	
City	State	ZIP	

I hereby certify that the above information is true and correct. I agree to notify the Michigan DNR of any changes that occur in factors affecting my coverage during any of my present and future operations.

Signature of Owner or Authorized Representative

Title

Date

Please complete the "SEALED BID" information on the next page

Vicious Ditches (32-007-26)

T43N, R24W, SEC. 18; T43N, R24W, SEC. 19; T43N, R24W, SEC. 20; T43N,

In response to the notice of sale to be held 2:00 p.m. (local time) on June 15, 2026, I am hereby submitting my sealed bid (firm offer) for the following forest products to be cut. Bids for individual species must be at or above the advertised price. All non-responsive bid forms may be rejected.

<u>PRODUCTS & SPECIES</u>	<u>ESTIMATED VOLUME*</u>	<u>ADVERTISED PRICE</u>	<u>BID PRICE/UNIT</u>
Sawtimber			
Basswood	13.5 MBF	\$ 65.00/MBF	\$ _____
Red Maple	3.1 MBF	\$ 152.00/MBF	\$ _____
Sugar Maple	4.4 MBF	\$ 234.00/MBF	\$ _____
Pulpwood			
Balsam Fir	95 Cords	\$ 12.30/Cord	\$ _____
Balsam Poplar	8 Cords	\$ 20.85/Cord	\$ _____
European Larch	7 Cords	\$ 14.60/Cord	\$ _____
Mixed Hardwood	139 Cords	\$ 14.45/Cord	\$ _____
N. White Cedar	5 Cords	\$ 6.30/Cord	\$ _____
Quaking Aspen	111 Cords	\$ 20.85/Cord	\$ _____
Sugar Maple	168 Cords	\$ 14.45/Cord	\$ _____
White Spruce	4 Cords	\$ 13.75/Cord	\$ _____

*The volumes are statistically estimated within plus (+) or minus (-) 28.68 percent at 95% confidence level. These estimated volumes are final and not subject to adjustment. Prospective bidders are urged to examine this timber and to make their own estimates of quantity and quality.

I understand that any or all bids may be rejected. All bids must be signed and all bid items must be bid or the bid form may be rejected. I also understand that consideration and awarding a contract will be based upon my past performance and ability to complete the contract based upon equipment and staffing subject to my control .

FEDERAL ID: _____ or SOCIAL SECURITY NUMBER: _____

Company or individual bidding: _____

Company representative's name: _____

Address: _____

City: _____ State: _____ Zip: _____

IF AVAILABLE, PLEASE PLACE THE PERSONALIZED LABEL FROM YOUR PROSPECTUS IN THE ABOVE BOX.

Individual or company representative's signature: _____ Date: _____

Phone number : _____ Email (optional): _____

THE WINNING BIDDER MUST COMPLETE THE VERIFICATION OF WORKER'S DISABILITY COMPENSATION ACT COMPLIANCE (ON REVERSE SIDE IF DOUBLE SIDED) WITHIN 21 DAYS OF SALE AWARD DATE



FOR DEPARTMENT USE ONLY
Sale Number (XX - XXX - XX - XX)
Forest Management Unit:

TIMBER SALE VERIFICATION OF WORKER'S DISABILITY COMPENSATION ACT COMPLIANCE

*As required by Act 317, P.A. 1969 (Worker's Compensation) and
Part 5 of Act 451 of 1994, as amended.*

VERIFICATION OF WORKER'S DISABILITY COMPENSATION ACT COMPLIANCE

- This verification must be completed and submitted within 21 days of contract award and prior to the issuance of the timber sale contract.
- In addition, if boxes 2B or 2C are checked, then Notice of Exclusion or Certificate of Insurance must be submitted within twenty-one (21) days of the contract award and prior to the issuance of the timber sale contract.
- All information must be typed or printed except for written signatures.

Please Check Appropriate Categories:

1. My business is organized as (you **must** check one of the boxes below):
 - A. Sole Proprietorship (individual)
 - B. Partnership
 - C. Corporation
2. You **must** check one of the boxes below:
 - A. I certify my business is a sole proprietorship and it has no employees but the sole proprietor. I am not subject to the Worker's Compensation Laws.
 - B. I certify my business has satisfied its obligation to the Worker's Compensation Act through the use of an approved Notice of Exclusion (BWC-337, Rev. 5/96). I will provide a copy of the Notice of Exclusion within 21 days of the contract award. (For questions or a copy of the BWC-337, please call the Worker's Compensation Bureau at 517 -322-1195).
 - C. I certify my business has a Worker's Compensation Policy. I will provide an original Certificate of Insurance within twenty-one (21) days of the contract award.
3. If you have checked item 2(A) or 2(B), you **must** indicate the number of **both** full-time and part-time employees, other than yourself, including family members and active partners (if none, you must enter "0").

_____ Full-time Employees

_____ Part-time Employees

Name of Business		Federal ID (or) Social Security No.	
Address		Telephone ()	
City	State	ZIP	

I hereby certify that the above information is true and correct. I agree to notify the Michigan DNR of any changes that occur in factors affecting my coverage during any of my present and future operations.

Signature of Owner or Authorized Representative

Title

Date

Please complete the "SEALED BID" information on the next page

Peshekee Supreme (32-004-25)
T48N, R30W, SEC. 12; T48N, R30W, SEC. 13; Marquette COUNTY

In response to the notice of sale to be held 2:00 p.m. (local time) on June 15, 2026, I am hereby submitting my sealed bid (firm offer) for the following forest products to be cut. Bids for individual species must be at or above the advertised price. All non-responsive bid forms may be rejected.

<u>PRODUCTS & SPECIES</u>	<u>ESTIMATED VOLUME*</u>	<u>ADVERTISED PRICE</u>	<u>BID PRICE/UNIT</u>
Sawtimber			
Paper Birch	2.5 MBF	\$ 49.00/MBF	\$ _____
Sugar Maple	0.8 MBF	\$ 156.00/MBF	\$ _____
Pulpwood			
Balsam Fir	39 Cords	\$ 8.20/Cord	\$ _____
Mixed Hardwood	281 Cords	\$ 9.65/Cord	\$ _____
Mixed Spruce	40 Cords	\$ 9.15/Cord	\$ _____
Paper Birch	85 Cords	\$ 9.85/Cord	\$ _____
Quaking Aspen	66 Cords	\$ 13.90/Cord	\$ _____

*The volumes are statistically estimated within plus (+) or minus (-) 20.77 percent at 95% confidence level. These estimated volumes are final and not subject to adjustment. Prospective bidders are urged to examine this timber and to make their own estimates of quantity and quality.

I understand that any or all bids may be rejected. All bids must be signed and all bid items must be bid or the bid form may be rejected. I also understand that consideration and awarding a contract will be based upon my past performance and ability to complete the contract based upon equipment and staffing subject to my control.

FEDERAL ID: _____ or SOCIAL SECURITY NUMBER: _____

Company or individual bidding: _____

Company representative's name: _____

Address: _____

City: _____ State: _____ Zip: _____

IF AVAILABLE, PLEASE PLACE THE PERSONALIZED LABEL FROM YOUR PROSPECTUS IN THE ABOVE BOX.

Individual or company representative's signature: _____ Date: _____

Phone number : _____ Email (optional): _____

THE WINNING BIDDER MUST COMPLETE THE VERIFICATION OF WORKER'S DISABILITY COMPENSATION ACT COMPLIANCE (ON REVERSE SIDE IF DOUBLE SIDED) WITHIN 21 DAYS OF SALE AWARD DATE



FOR DEPARTMENT USE ONLY	
Sale Number (XX - XXX - XX - XX)	
Forest Management Unit:	

TIMBER SALE VERIFICATION OF WORKER'S DISABILITY COMPENSATION ACT COMPLIANCE

As required by Act 317, P.A. 1969 (Worker's Compensation) and
Part 5 of Act 451 of 1994, as amended.

VERIFICATION OF WORKER'S DISABILITY COMPENSATION ACT COMPLIANCE

- This verification must be completed and submitted within 21 days of contract award and prior to the issuance of the timber sale contract.
- In addition, if boxes 2B or 2C are checked, then Notice of Exclusion or Certificate of Insurance must be submitted within twenty-one (21) days of the contract award and prior to the issuance of the timber sale contract.
- All information must be typed or printed except for written signatures.

Please Check Appropriate Categories:

1. My business is organized as (you **must** check one of the boxes below):
 - A. Sole Proprietorship (individual)
 - B. Partnership
 - C. Corporation
2. You **must** check one of the boxes below:
 - A. I certify my business is a sole proprietorship and it has no employees but the sole proprietor. I am not subject to the Worker's Compensation Laws.
 - B. I certify my business has satisfied its obligation to the Worker's Compensation Act through the use of an approved Notice of Exclusion (BWC-337, Rev. 5/96). I will provide a copy of the Notice of Exclusion within 21 days of the contract award. (For questions or a copy of the BWC-337, please call the Worker's Compensation Bureau at 517 -322-1195).
 - C. I certify my business has a Worker's Compensation Policy. I will provide an original Certificate of Insurance within twenty-one (21) days of the contract award.
3. If you have checked item 2(A) or 2(B), you **must** indicate the number of **both** full-time and part-time employees, other than yourself, including family members and active partners (if none, you must enter "0").

_____ Full-time Employees

_____ Part-time Employees

Name of Business		Federal ID (or) Social Security No.	
Address		Telephone ()	
City	State	ZIP	

I hereby certify that the above information is true and correct. I agree to notify the Michigan DNR of any changes that occur in factors affecting my coverage during any of my present and future operations.

Signature of Owner or Authorized Representative

Title

Date

Please complete the "SEALED BID" information on the next page