



**DEPARTMENT OF NATURAL RESOURCES  
STATE OF MICHIGAN  
TIMBER SALE PROSPECTUS #7764**

SCHEDULED SALE DATE AND TIME: 3:00 p.m. (local time) on May 19, 2026.

LOCATION: NAUBINWAY DNR FIELD OFFICE, PO BOX 287, W11569 US2, NAUBINWAY, MI 49762.

PROSPECTUS NOTE: The bidder is advised to inspect the sale area and review the location, estimated volumes, operating costs and contract terms of proposed sales. Please be aware that some landowners may request 60 days or more notice for access across their land.

Notice is hereby given that bids will be received by the Unit Manager, SAULT STE MARIE MANAGEMENT UNIT, for certain timber on the following described lands:

Between the Streams Mix (45-104-26) / T44N, R10W, SEC. 5 , S1/2SW,SWSE.

T44N, R10W, SEC. 8 , N1/2NW,NE,N1/2SE.

T44N, R10W, SEC. 9 , S1/2NW,NWSW.

Mackinac County, Advertised Price \$62,909.00, 152.8 Acres, Hardwood, Spruce/Fir/Tamarack.

Can You Hear Me Now (45-113-25) / T43N, R07W, SEC. 18, E1/2NW,SWNE,N1/2SW,SESW,SWSE.

T43N, R08W, SEC. 13, SENW,S1/2NE,N1/2SE.

Mackinac County, Advertised Price \$60,962.40, 100.2 Acres, Red Pine, Hardwood.

SALE NOTE: A recreation site such as a trail, pathway, or campground is within the sale area or the vicinity. Certain restrictions/specifications may be applicable including time restrictions.

Dinky Mix (45-119-25) / T44N, R07W, SEC. 30, S1/2SW.

T44N, R07W, SEC. 31, N1/2NW,SESW,NWNE,S1/2NE,NWSE.

T44N, R08W, SEC. 25, SESE.

T44N, R08W, SEC. 36, E1/2NE.

Mackinac County, Advertised Price \$30,059.10, 74.1 Acres, Aspen, Hardwood.

SALE NOTE: The Dinky Line is a year round restricted county road and will need appropriate permits from the Mackinac County Road Commission before any hauling can begin.

A recreation site such as a trail, pathway, or campground is within the sale area or the vicinity. Certain restrictions/specifications may be applicable including time restrictions.

## BID INSTRUCTIONS (VER. 10/10/2022):

### 1. Scheduled Bid Location, Date, and Time (2/11)

Bids must be received by the Unit Manager, NAUBINWAY DNR FIELD OFFICE, PO Box 287 W11569 US2, Naubinway, MI 49762, no later than 3:00 p.m. (local time) on May 19, 2026. For further information concerning this sale, contact Josh Brinks at 906-203-0210 extension .

### 2. Bidder's Qualifications (10/22)

If all or part of a timber sale was prepared by a private contractor, the contractor and that contractor's company are not permitted to bid on the timber sale. A person must be 18 years of age or older to purchase timber. Permanent employees of the Department of Natural Resources or members of their immediate household may not bid. Former employees, in the permanent or seasonal class, may not bid until 3 months after the last day of active duty. Bids will not be accepted from individuals or companies appearing on the DNR/FRD No-Bid List. This list contains the names of purchasers who previously failed to execute a contract within 21-days or who have a history of poor performance.

### 3. Preparation of Sealed Bids (5/16)

Bid Forms may be completed online thru Michigan DNR Timber Sale Online Bidding (OLB) at [www.michigan.gov/timberbidding](http://www.michigan.gov/timberbidding) or by completing the hardcopy Bid Form found in the Timber Sale Prospectus . Hardcopy Bid Forms shall be manually signed in ink. Registration in OLB is considered your 'signature' for all bids submitted thru that system. Bid prices must be entered for each species and product in the Bid Price column for all material subject to bidding and all fill-in blanks must be completed. If erasures or other changes appear on the hardcopy Bid Form, each erasure or change must be initialed by the person signing the bid.

### 4. Submission of Sealed Bids (5/16)

Bid forms may be obtained from the Unit Manager or thru OLB. Bids may be submitted hardcopy or thru OLB. All hardcopy bids must be submitted on the bid form and in an envelope clearly identified as described in this section. NOTE: Only one bid form per bid envelope. Sealed bids must be submitted to the Unit office designated in the prospectus and must be submitted at or prior to the time established in the prospectus. The envelope should show on the outside (a) the sale name or number and (b) the date and time of bid opening, as shown in the prospectus. Bids received after the time specified in the sale prospectus are late bids and will be rejected.

It is possible for a bidder to submit multiple bids on a single sale. For example, a bid may be submitted hardcopy and a bid may be submitted thru OLB. Or, two bidders from the same company could both submit bids on the same sale. If this were to happen, the State would accept all bids received and award the contract accordingly. All bidding and contractual requirements would apply to all bids received.

### 5. Public Opening of Sealed Bids (7/16)

If conditions permit, the sealed bids will be publicly opened and posted at the time and place set in the prospectus.

If a bidder, present at a bid opening, has submitted bids on more than one sale, that bidder may withdraw their unopened bid envelopes or announce the withdrawal of their online bid after being declared the successful bidder on one sale.

### 6. Award of Contract (1/11)

Award of the contract will be made to the Bidder whose bid, conforming to the prospectus, is most advantageous to the State of Michigan on the basis of total value at rates bid for the estimated quantities. The State reserves the right to reject any bid or waive any minor irregularity in bids received. A written award mailed (or otherwise furnished) to the successful Bidder shall be deemed to result in a binding contract without further action by either party.

### 7. Down Payment (1/11)

The Bidder to whom award is made must make a down payment within 21 days of the sale award. The amount of the down payment will be calculated as shown in the Bond and Payment Schedule of this prospectus. Only cash may be used to meet this requirement.

### 8. Performance Security (1/11)

As guarantee of faithful performance, a cash bond, certificate of deposit, surety bond or irrevocable letter of credit (LOC) is required within 21 days of the sale award. The amount of the performance security is shown in the Bond and

Payment Schedule of this prospectus. If an LOC or surety is used, the coverage must extend for at least 6 months beyond the contract expiration.

#### 9. Worker's Compensation (10/22)

Purchaser shall obtain worker's compensation insurance to cover claims under Michigan's Worker's Disability Compensation Act of 1969 or similar employee benefit act of any other state applicable to an employee. Verification of Worker's Disability Compensation Act Compliance must be completed and submitted within 21 days of contract award and prior to the issuance of the timber sale contract. In addition, if applicable, Notice of Exclusion or Certificate of Insurance must also be submitted.

#### 10. Timber Sale Contract (10/22)

Additional conditions and requirements common to all timber sales are listed on the timber sale contract (R4031) and are available on line at [www.michigan.gov/timber](http://www.michigan.gov/timber). Contact the Unit Manager for additional information or a sample contract. Within 21 days of the date of the award letter, the bidder must sign the contract and provide the required down payment, performance security, and verification of worker's disability compensation. The down payment and performance security shall be in accordance with the provisions of the timber sale contract, in the sums stated in this prospectus. If these actions are not taken, then the Bidder, the Bidder's corporation, and the corporation's principals may not be permitted to bid on State timber sales for a period of 3 months after the first offense, 6 months after the second offense, and 1 year after the third offense. An offense will only be counted against the Bidder for 5 years. In addition, the Bidder certifies that if awarded this contract, the Bidder will complete the timber sale contract in accordance with its terms and any modifications thereof including requirements to purchase, cut, and remove the included timber by the expiration date.

Payment Unit values in the State Forest Timber Sale Contract are calculated based on the advertised value of the Payment Unit as a percentage of the total advertised value of the contract. The advertised value of each Payment Unit is given in the Description of Timber by Payment Unit table on the Timber Sale Information page. For example, if the value of Payment Unit 1 is advertised as \$1,500 and the total Timber Sale value is advertised as \$10,000, the contract price for Payment Unit 1 will be 15% of the total bid price ( $\$1,500/\$10,000 * 100$ ).

#### 11. Disclaimer of Estimates and Bidder's Warranty of Inspection (10/22)

Before submitting this bid, the Bidder is advised and cautioned to inspect the sale area, review the requirements of the sale contract, and take other steps as may be reasonably necessary to ascertain the location, estimated volumes, construction estimates, and operating costs of the proposed sale. Failure to do so will not relieve the Bidder from responsibility for completing the contract.

The Bidder warrants that this bid is submitted solely on the basis of the Bidder's examination and inspection of the quality and quantity of the timber offered for sale and the Bidder's opinion of the value thereof and the costs of recovery. No reliance should be placed on the State of Michigan's estimates of timber quality, quantity or costs of recovery. Bidder further acknowledges that the State of Michigan: (i) expressly disclaims any warranty of fitness of timber for any purpose; (ii) offers this timber as is without any warranty of quality (merchantability) or quantity and (iii) expressly disclaims any warranty as to the quantity or quality of timber sold.

#### 12. Certification and Chain-of-Custody (10/22)

Unless otherwise indicated in the contract under section 7 – Other Conditions of the Sale Specific Conditions & Requirements, the area encompassed by this timber sale is certified to the standards of the Forest Stewardship Council (FSC) - Certificate #SCS-FM/COC-00090N and the Sustainable Forestry Initiative (SFI) - Certificate #NSF-SFIS-5Y031-SF5. Forest products from this sale may be delivered to the mill as "FSC 100% and / or SFI certified" as long as the contractor hauling the forest products is chain-of-custody (COC) certified or covered under a COC certificate from the destination mill. The purchaser is responsible for maintaining COC after leaving the sale area.

#### 13. Good Neighbor Authority (GNA) Requirements (10/22)

If the name of this timber sales contains the acronym GNA, it is authorized by the Good Neighbor Authority (GNA) and covered by various agreements between the U.S. Forest Service and the State. The timber sale occurs on federal land and the following conditions apply:

GNA contracts on US Forest Service land will not be awarded to purchasers on the Federal list of excluded parties. The System for Award Management (SAM) will be checked for active excluded parties prior to award of contract. In

addition, the Bidder to whom award is made must complete an Assurance Regarding Felony Conviction or Tax Delinquent Status for Corporate Applicants (AD-3031).

14. Good Neighbor Authority (GNA) Requirements, con't (10/22)

Bidder certifies, by signing this bid form, that to the best of Bidder's knowledge that the following representations are accurate and complete.

- a. That the Bidder and its principals are not presently debarred, suspended, proposed for debarment, declared ineligible, or voluntary excluded from timber sales (covered transactions) by any Federal department or agency.
- b. That the Bidder and its principals have not within a 3-year period preceding this bid been convicted of or had a civil judgment rendered against them for commission of fraud or a criminal offense in connection with obtaining , attempting to obtain, or performing a public (Federal, State, or local) transaction or contract under a public transaction; violation of Federal or State antitrust statutes or commission of embezzlement, theft, forgery, bribery, falsification or destruction of records, making false statements, or receiving stolen property.
- c. That the Bidder and its principals are not presently indicted for or otherwise criminally or civilly charged by a governmental entity (Federal, State, or local) with commission of any of the offenses enumerated in paragraph b of this certification.
- d. That the Bidder and its principals have not within a 3-year period preceding this bid had one or more public transactions (Federal, State, or local) terminated for breach or default of a timber or forest product contract.

Bidders that cannot certify this requirement, in whole or in part, shall submit an explanation with their bid.

Scott Bowen  
Director

## TIMBER SALE INFORMATION

Between the Streams Mix (45-104-26)  
 T44N, R10W, SEC. 5; T44N, R10W, SEC. 8; T44N, R10W, SEC. 9.  
 Mackinac County (Advertised Price \$62,909.00)

A timber sale contract for this lump sum, sealed bid timber sale will be awarded to the responsible bidder offering the highest sealed bid price. All units of volume listed below were estimated using the Inventory Manager computer program and the new Michigan taper model. Bids must be at or above the following advertised price for each product and species:

<u>PRODUCTS &amp; SPECIES</u>	<u>ESTIMATED UNITS*</u>	<u>ADVERTISED PRICE</u>
Sawtimber		
Black Cherry	1.8 MBF	\$ 76.00 / MBF
Red Maple	46.9 MBF	\$ 100.00 / MBF
Sugar Maple	32.1 MBF	\$ 293.00 / MBF
Yellow Birch	1.9 MBF	\$ 51.00 / MBF
Pulpwood		
Balsam Fir	436 Cords	\$ 8.75 / Cord
Balsam Poplar	137 Cords	\$ 17.70 / Cord
Hemlock	70 Cords	\$ 3.95 / Cord
Mixed Hardwood	1,978 Cords	\$ 16.70 / Cord
Mixed Spruce	70 Cords	\$ 9.70 / Cord
Paper Birch	54 Cords	\$ 5.20 / Cord
Quaking Aspen	456 Cords	\$ 17.70 / Cord

\* The total volume is statistically estimated within plus (+) or minus (-) 10.11 percent. There are an estimated 3,398 cords on this timber sale, plus or minus 344 cords at the 95% confidence level. The estimated units are final and not subject to adjustment. Prospective bidders are urged to examine this timber and to make their own estimates of quantity and quality.

### BOND AND PAYMENT SCHEDULE:

1. A bond in the amount of \$3,145.00 to insure faithful performance of the conditions of the contract will be deposited by the successful bidder within 21 days of the sale award.
2. Cutting in any sale or unit without the required advance payment would be considered a trespass.
3. Total payment must be paid in advance or according to the following schedule :
  - (a) Ten percent (10%) of the sale value must be paid within 21 days of the sale award.
  - (b) The 10% down payment will be credited towards the first unit cut.
  - (c) Payment for each of the following units must be made before cutting begins in that unit:
 

PAYMENT UNIT NUMBER	PERCENT OF TOTAL SALE VALUE
01	18.4%
02	24.3%
03	14.1%
04	24.8%
05	4.2%
06	4.4%
07	9.8%
4. If no cutting takes place, the 10% down payment will not be refunded.
5. Operations on the contract issued will terminate on 06/30/2030.

### SALE STATISTICS

Volumes were calculated in cubic feet using the Michigan taper model. Cubic foot volume includes all wood inside bark for the product indicated. For display purposes, cubic feet were converted to cords and MBF using a simple conversion factor, e.g. 79 cubic feet per cord and 185 cubic feet per MBF. The cubic foot volumes are precise; the cords and MBF volumes are not. Cubic foot volume cannot be directly converted to cords or boards with precision.

**SALE VOLUMES**

The total estimated sale volume may not equal the sum of the species/products due to the nature of statistical calculations associated with double sampling methodology.

VOLUME			STATISTICAL RANGE IN CORDS	
TOTAL CUBIC FEET	TOTAL CORDS	PERCENT ERROR	MINIMUM	MAXIMUM
268,428	3,398	10.11%	3,054	3,741

**VDU VOLUMES**

A VDU is a Volume Determination Unit. Volumes and their associated statistics are calculated at the VDU level and summarized to the sale level. There is often a one to one relationship between a VDU and a Payment Unit, but not always, depending on the cruise design. Refer to the VDU TO PAYMENT UNIT table.

	VOLUME			RANGE IN CORDS	
VDU	TOTAL CUBIC FEET	TOTAL CORDS	PERCENT ERROR	MINIMUM	MAXIMUM
1	32,759	415	20.29%	331	499
3	76,885	973	26.27%	718	1,229
9	24,864	315	24.37%	238	391
26	11,520	146	37.79%	91	201
27	73,556	931	16.68%	776	1,086
70	16,460	208	40.27%	124	292
72	12,017	152	31.47%	104	200
75	20,368	258	30.39%	179	336
<b>TOTAL:</b>	<b>268,428</b>	<b>3,398</b>		<b>2,561</b>	<b>4,235</b>

**VDU TO PAYMENT UNIT**

When a VDU is associated with more than one Payment Unit (PU), the VDU volumes are assigned to the PU based on acres of the VDU within the PU.

VDU	VDU ACRES	PU	PU ACRES
<b>TOTAL:</b>			

**DESCRIPTION OF TIMBER BY PAYMENT UNIT (PU)**

PU	MARKET GROUP	PRODUCT	QUANTITY	UNIT	ACRES	ADVERTISE PRICE
1	Black Cherry	Sawtimber	0.6	MBF	33.9	\$11,590.50
	Red Maple		10.0	MBF		
	Sugar Maple		17.4	MBF		
	Balsam Fir	Pulpwood	48	Cords		
	Mixed Hardwood		301	Cords		
	<i>Beech</i>		7	<i>Cords</i>		
	<i>Black Cherry</i>		14	<i>Cords</i>		
	<i>Red Maple</i>		169	<i>Cords</i>		
	<i>Sugar Maple</i>		111	<i>Cords</i>		
2	Black Cherry	Sawtimber	1.2	MBF	27.8	\$15,313.30
	Yellow Birch		1.9	MBF		
	Balsam Fir	Pulpwood	144	Cords		
	Balsam Poplar		137	Cords		
	Mixed Hardwood		198	Cords		
	<i>Beech</i>		1	<i>Cords</i>		
	<i>Black Ash</i>		3	<i>Cords</i>		
	<i>Black Cherry</i>		7	<i>Cords</i>		
	<i>Red Maple</i>		108	<i>Cords</i>		
	<i>Sugar Maple</i>		25	<i>Cords</i>		
	<i>Yellow Birch</i>		54	<i>Cords</i>		
	Mixed Spruce		7	Cords		
	<i>White Spruce</i>		7	<i>Cords</i>		
	Paper Birch		33	Cords		
Quaking Aspen		446	Cords			
3	Red Maple	Sawtimber	5.7	MBF	22.9	\$8,864.10
	Sugar Maple		14.0	MBF		
	Balsam Fir	Pulpwood	36	Cords		
	Mixed Hardwood		231	Cords		
	<i>Red Maple</i>		133	<i>Cords</i>		
	<i>Sugar Maple</i>		98	<i>Cords</i>		
	Mixed Spruce		2	Cords		
	<i>White Spruce</i>		2	<i>Cords</i>		
4	Red Maple	Sawtimber	22.8	MBF	40.8	\$15,519.90
	Balsam Fir	Pulpwood	95	Cords		
	Hemlock		29	Cords		
	Mixed Hardwood		706	Cords		
	<i>Beech</i>		5	<i>Cords</i>		
	<i>Red Maple</i>		686	<i>Cords</i>		
	<i>Sugar Maple</i>		15	<i>Cords</i>		
	Mixed Spruce		41	Cords		
	<i>Black Spruce</i>		14	<i>Cords</i>		
	<i>White Spruce</i>		27	<i>Cords</i>		
	Quaking Aspen		6	Cords		
5	Red Maple	Sawtimber	4.3	MBF	10.8	\$2,646.35
	Sugar Maple		0.7	MBF		
	Balsam Fir	Pulpwood	29	Cords		
	Mixed Hardwood		101	Cords		
	<i>Beech</i>		2	<i>Cords</i>		
	<i>Red Maple</i>		82	<i>Cords</i>		
	<i>Sugar Maple</i>		17	<i>Cords</i>		
	Quaking Aspen		4	Cords		
6	Balsam Fir	Pulpwood	23	Cords	5.2	\$2,778.50
	Hemlock		13	Cords		
	Mixed Hardwood		136	Cords		
	<i>Beech</i>		5	<i>Cords</i>		
	<i>Red Maple</i>		131	<i>Cords</i>		

**DESCRIPTION OF TIMBER BY PAYMENT UNIT (PU), CON'T**

PU	MARKET GROUP	PRODUCT	QUANTITY	UNIT	ACRES	ADVERTISE PRICE
6 con't	Mixed Spruce	Pulpwood	15	Cords		
	<i>White Spruce</i>		15	<i>Cords</i>		
	Paper Birch		21	Cords		
7	Red Maple	Sawtimber	4.1	MBF	11.4	\$6,196.35
	Balsam Fir	Pulpwood	61	Cords		
	Hemlock		28	Cords		
	Mixed Hardwood		305	Cords		
	<i>Black Cherry</i>		4	<i>Cords</i>		
	<i>Red Maple</i>		231	<i>Cords</i>		
	<i>Sugar Maple</i>		11	<i>Cords</i>		
	<i>Yellow Birch</i>		59	<i>Cords</i>		
	Mixed Spruce		5	Cords		
	<i>White Spruce</i>		5	<i>Cords</i>		
TOTAL:			82.7	MBF		
TOTAL:			3,201	Cords		

## Sale Specific Conditions & Requirements

**Sale Name: Between the Streams Mix**

**Sale Number: 45-104-26 Seq#: 1**

### 1 - Sale Area

#### 1.2 - Boundaries

##### 1.2.1 - Painted Boundaries (9/19)

The sale boundary and Payment Unit boundaries are marked and identified by red and purple paint. Exterior sale boundary lines against state are marked with red paint. Interior Payment Unit boundaries are marked with purple paint. Retention patches are marked with red paint; no harvesting activities may occur within these areas. The painted boundary line trees are not Included Timber and are to be protected. Purple painted trees designating an interior Payment Unit boundary are only to be cut if marked with orange paint.

### 2 - Timber Specifications

#### 2.1 - Included Timber

##### 2.1.1 - Clearcut Unit(s) with Unmerchantable Trees (6/14)

Within Payment Unit(s) 2, cut all deciduous trees that are two (2) inches or more at DBH and all conifer trees that are four (4) inches or more at DBH, except cedar and hemlock. Also do not cut any trees marked with green paint above and below stump height.

Within Payment Unit(s) 6 & 7, cut all trees that are four (4) inches or more at DBH, except do not cut any trees marked with green paint above and below stump height.

##### 2.1.3 - Cut Tree Marked Unit(s) (12/08)

Within Payment Unit(s) 1, 3 & 5, all trees are designated for cutting when marked with orange paint above and below stump height, regardless of merchantability. All balsam fir trees four (4) inches or more at DBH are designated for cutting unless marked with green paint above and below stump height.

##### 2.1.7 - Leave Tree Marked Unit(s) (6/14)

Within Payment Unit(s) 4, cut all trees that are four (4) inches or more at DBH, except trees marked with green paint above and below stump height.

#### 2.2 - Utilization

##### 2.2.9 - No Chipping Permitted (12/08)

Within Payment Unit(s) 1-7, all wood must be removed by whole tree, tree segment, or roundwood. No chipping is permitted.

### 3 - Payments

#### 3.3 - Pre-measured Sales

##### 3.3.4 - Dividing Payment Units (7/14)

Payment Unit(s) 1-7 may be divided at the request of the Purchaser and upon approval of the Unit Manager. Dividing Payment Units is a contract modification which requires a Timber Sale Contract Amendment. There will be only one division per Payment Unit.

#### 3.4 - Damaged Timber

##### 3.4.1 - Damaged Timber (12/24)

General Condition and Requirement 3.4 Damaged Timber, defines liquidated damages for undesignated live merchantable trees which are cut or injured. In addition, extreme care should be taken to avoid damage to tree seedlings and saplings. Within the Sale Area, if more than 20% of the tree seedlings or saplings (1/4" to 4.5" DBH) within a specified portion of the Sale Area are damaged, liquidated damages will be assessed at \$250 per acre for all acreage within that specified portion of the Sale Area that was damaged.

No damage is acceptable to undesignated live merchantable trees. Within the Sale Area, if more than 5 % of trees (> 4.5" DBH) within a specified area of the sale are damaged, liquidated damages will be assessed for all trees damaged. Rates will

be in accordance with General Condition and Requirement 3.4 Damaged Timber.

## 4 - Transportation

### 4.1 - Construction

#### 4.1.3 - Slash and Earthen Piles (8/04)

Piles or windrows of earth along roads and landings that have been widened or constructed shall be leveled. Slash from road maintenance or construction, including stumps, shall be dispersed throughout the sale.

#### 4.1.6 - Road Construction (4/24)

Construction of new roads or improvements of existing roads shall be done in such a way as to minimize the environmental and visual impacts. Merchantable trees shall be cut and utilized unless otherwise directed. Non-merchantable trees shall be severed and laid flat on the ground. Slash shall be scattered, not left in windrows, and kept a minimum of 10 feet back from the road edge. Stumps shall be set upright, not left on edge, and be moved at least 10 feet away from the road edge. Disturbed soil shall be feathered into the woods and not left in berms or windrows.

#### 4.1.7 - Road Closure (10/11)

All new roads built into the sale must be blocked to vehicle traffic upon completion of the sale. Overgrown roads that are reopened shall be considered new roads. In general, this will require constructing a four (4') foot high berm of stumps and logs covered with earth. These roads must be rendered impassable to cars and trucks. Contact the Sale Administrator for specific details of design and placement.

### 4.2 - Maintenance

#### 4.2.3 - Road maintenance (8/13)

The following road maintenance is required: Within 60 days of completion of hauling, or if no hauling occurs for 60 days, the road must be maintained and graded. This includes cleaning of drainage areas, grading, crowning and filling with gravel, if necessary. Damages will be assessed if grading/repair does not occur.

#### 4.2.5 - Two Wheel Drive Condition (2/04)

All existing trail roads on and adjacent to the Sale Area must be passable by two-wheel drive traffic for the duration of the sale.

## 5 - Operations

### 5.2 - Conduct of Operations

#### 5.2.1 - Slash

##### 5.2.1.11 - Slash for Reforestation (3/21)

To facilitate reforestation, within Payment Units 1, 3, 4, & 5 slash shall be left unevenly distributed. Tops shall not be crushed or ran over unless in main skid trails. Preferably, unbroken tops shall be left whole and intact, and placed within gaps created during harvesting operations.

#### 5.2.2 - Hazard Trees/Snags

##### 5.2.2.1 - Den Trees (10/16)

Obvious hollow and/or den trees shall be protected and left standing unless they are a safety hazard.

#### 5.2.3 - Operating Restrictions

##### 5.2.3.3 - Bark Slippage Restriction (3/09)

Within Payment Unit(s) 1, 3, & 5, unless changed by written agreement, cutting and skidding are not permitted during the period of May 1 to July 15. This restriction is because of bark slippage.

#### 5.2.22 - Operating Caution

##### 5.2.22.1 - Operating Caution (6/11)

It is recommended, but not required, that within Payment Unit(s) 2, 4, 6 & 7, cutting, skidding, and hauling occur during frozen winter conditions or very dry summer conditions. The reason for the recommendation is because of wet, sensitive soils.

#### 5.2.32 - Decking/Landing Restoration (9/13)

All decking and landing areas must have the surface area restored to a condition equal to or better than before. This is to ensure the proper regeneration of the stand. Wood debris, chips and "cookies" from trimmings must be removed or scattered away from landing and loading areas and may not be windrowed on the edge.

#### 5.2.38 - No Decking Against Live Trees (2/04)

Cut products may not be decked against unmarked or designated leave trees.

### 5.8 - Protection of Endangered Species

#### 5.8.5 - Protection of Raptor Nests (3/13)

All trees with raptor nests will be protected if found during harvesting operations. Notification will be made to the Unit Manager or his/her representative who will notify the Wildlife Biologist so an onsite evaluation and recommendation can be made, if necessary.

## 6 - Safety and Fire Prevention

### 6.2 - Signing

#### 6.2.1 - Road Posting (10/20)

The Purchaser is responsible for posting and maintaining caution signs on the two-track woods roads used for skidding and hauling prior to beginning operations. The road must be posted at the entrance of woods road off of M-117 to warn of logging activity and truck traffic. Signs must be removed when harvest operations are suspended or completed. The Purchaser will provide these signs. It is also recommended, but not required, to have "trucks entering highway" signs posted on M-117.



**TIMBER SALE MAP**

This information provided by authority of Part 525, 1994 PA 451, as amended.

Sale Number  
**45-104-26**

Date  
**12/15/2025**

Forest Management Unit  
Sault Ste Marie Mgt Unit

County  
Mackinac

Mapped By: C. Flatt  
Cruised By: Naubinway DNR Staff

Scale  
**1:15,840**

Page  
**1**

Of  
**1**

Township  
44N

Range  
10W

Section(s) and  
Subdivision(s) Sec. 5 S1/2SW,SWSE; Sec. 8 N1/2NW,NE,N1/2SE; Sec. 9 S1/2NW,NWSW;

**Cover Type**

A = Aspen	J = Jack Pine	O = Oak	U = Upland Brush
B = Paper Birch	K = Rock	P = Lowland Poplar	UM = Upland Mix Forest
C = Cedar	L = Lowland Brush	Q = Mixed Swamp Conifer	V = Bog or Marsh
D = Treed Bog	LM = Lowland Mix Forest	R = Red Pine	W = White Pine
E = Swamp Hardwoods	M = Maple, Beech, Birch	S = Black Spruce	X = Non Stocked
F = Spruce/Fir	MC = Mixed Conifer	T = Tamarack	Y = Sand
G = Grass	MD = Mixed Deciduous	Z = Water	
H = Hemlock	N = Marsh		

**Density**

0 = Non Stocked	5 = Pole Timber Medium
1 = Seedling Sapling Poor	6 = Pole Timber Well
2 = Seedling Sapling Medium	7 = Saw Timber Poor
3 = Seedling Sapling Well	8 = Saw Timber Medium
4 = Pole Timber Poor	9 = Saw Timber Well

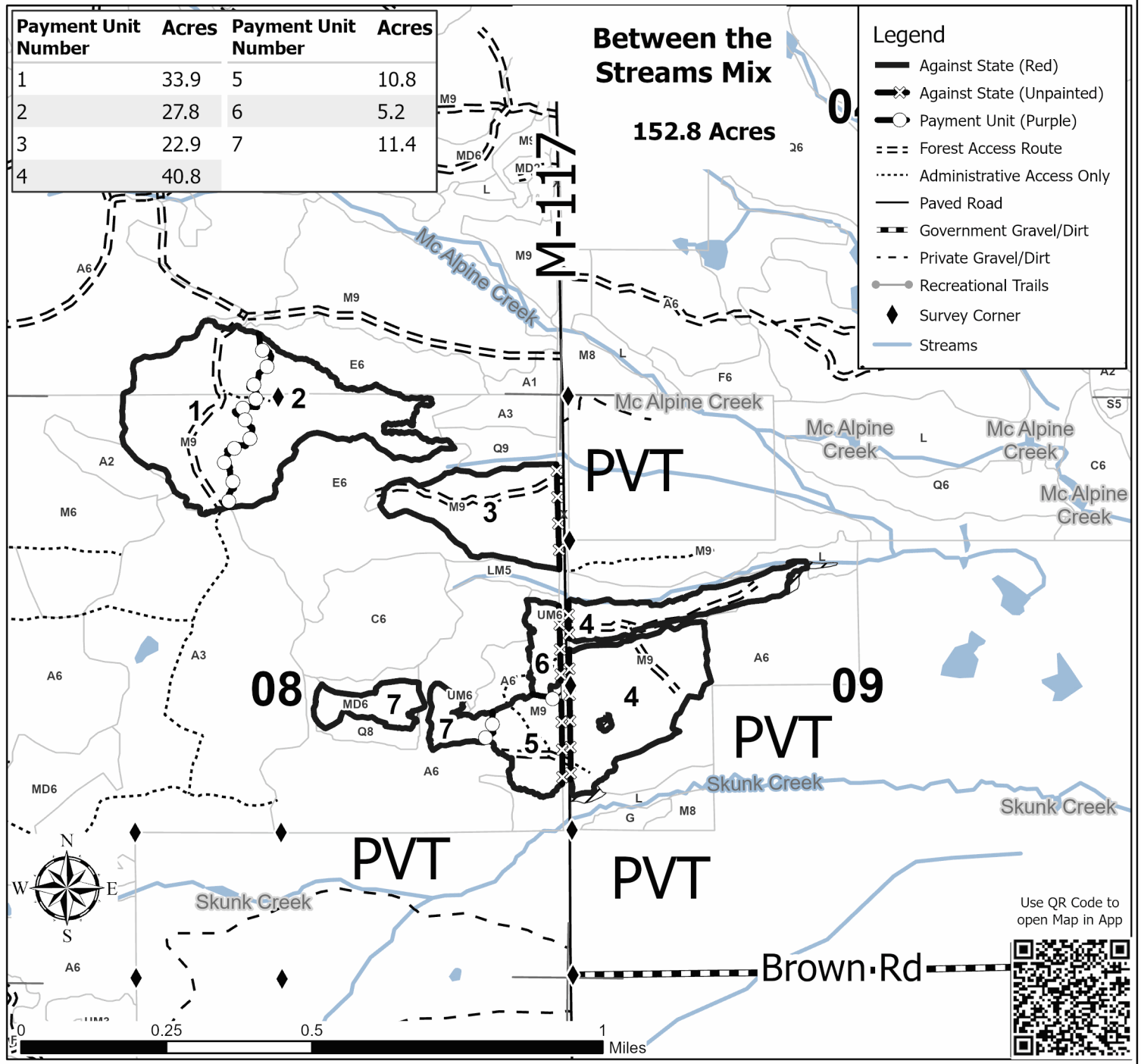
Payment Unit Number	Acres	Payment Unit Number	Acres
1	33.9	5	10.8
2	27.8	6	5.2
3	22.9	7	11.4
4	40.8		

**Between the Streams Mix**

**152.8 Acres**

**Legend**

- Against State (Red)
- Against State (Unpainted)
- Payment Unit (Purple)
- Forest Access Route
- Administrative Access Only
- Paved Road
- Government Gravel/Dirt
- Private Gravel/Dirt
- Recreational Trails
- Survey Corner
- Streams



Use QR Code to open Map in App



## TIMBER SALE INFORMATION

Can You Hear Me Now (45-113-25)

T43N, R07W, SEC. 18; T43N, R08W, SEC. 13.  
Mackinac County (Advertised Price \$60,962.40)

SALE NOTE: A recreation site such as a trail, pathway, or campground is within the sale area or the vicinity. Certain restrictions/specifications may be applicable including time restrictions.

A timber sale contract for this lump sum, sealed bid timber sale will be awarded to the responsible bidder offering the highest sealed bid price. All units of volume listed below were estimated using the Inventory Manager computer program and the new Michigan taper model. Bids must be at or above the following advertised price for each product and species:

<u>PRODUCTS &amp; SPECIES</u>	<u>ESTIMATED UNITS*</u>	<u>ADVERTISED PRICE</u>
Sawtimber		
Red Maple	1.7 MBF	\$ 100.00 / MBF
Sugar Maple	12.7 MBF	\$ 293.00 / MBF
Pulpwood		
Balsam Fir	27 Cords	\$ 8.75 / Cord
Misc. Species 1	4.7 Acres	\$ 5.00 / Acre
Mixed Aspen	64 Cords	\$ 17.70 / Cord
Mixed Hardwood	163 Cords	\$ 16.70 / Cord
Paper Birch	2 Cords	\$ 5.20 / Cord
Red Pine	705 Cords	\$ 75.00 / Cord
White Pine	5 Cords	\$ 14.25 / Cord

\* The total volume is statistically estimated within plus (+) or minus (-) 11.74 percent. There are an estimated 1,770 cords on this timber sale, plus or minus 208 cords at the 95% confidence level. The estimated units are final and not subject to adjustment. Prospective bidders are urged to examine this timber and to make their own estimates of quantity and quality.

### **BOND AND PAYMENT SCHEDULE:**

1. A bond in the amount of \$3,048.00 to insure faithful performance of the conditions of the contract will be deposited by the successful bidder within 21 days of the sale award.
2. Cutting in any sale or unit without the required advance payment would be considered a trespass.
3. Total payment must be paid in advance or according to the following schedule :
  - (a) Ten percent (10%) of the sale value must be paid within 21 days of the sale award.
  - (b) The 10% down payment will be credited towards the first unit cut.
  - (c) Payment for each of the following units must be made before cutting begins in that unit:
 

PAYMENT UNIT NUMBER	PERCENT OF TOTAL SALE VALUE
01	0.0%
02	43.5%
03	25.0%
04	10.3%
05	7.1%
06	7.0%
07	7.1%
4. If no cutting takes place, the 10% down payment will not be refunded.
5. Operations on the contract issued will terminate on 06/30/2030.

### **SALE STATISTICS**

Volumes were calculated in cubic feet using the Michigan taper model. Cubic foot volume includes all wood inside bark for the product indicated. For display purposes, cubic feet were converted to cords and MBF using a simple conversion factor, e.g. 79 cubic feet per cord and 185 cubic feet per MBF. The cubic foot volumes are precise; the cords and MBF volumes are not. Cubic foot volume cannot be directly converted to cords or boards with precision.

**SALE VOLUMES**

The total estimated sale volume may not equal the sum of the species/products due to the nature of statistical calculations associated with double sampling methodology.

VOLUME			STATISTICAL RANGE IN CORDS	
TOTAL CUBIC FEET	TOTAL CORDS	PERCENT ERROR	MINIMUM	MAXIMUM
139,818	1,770	11.74%	1,562	1,978
4.80 acres are being sold by the acre and do not have cubic foot or cord volumes.				

**VDU VOLUMES**

A VDU is a Volume Determination Unit. Volumes and their associated statistics are calculated at the VDU level and summarized to the sale level. There is often a one to one relationship between a VDU and a Payment Unit, but not always, depending on the cruise design. Refer to the VDU TO PAYMENT UNIT table.

VDU	VOLUME			RANGE IN CORDS	
	TOTAL CUBIC FEET	TOTAL CORDS	PERCENT ERROR	MINIMUM	MAXIMUM
9	16,039	203	16.58%	169	237
10	6,621	84	41.55%	49	119
19	11,480	145	36.78%	92	199
21	4,490	57	45.05%	31	82
26	10,440	132	36.03%	85	180
100 *			N/A		
119	90,417	1,145	16.71%	953	1,336
<b>TOTAL:</b>	<b>139,486</b>	<b>1,766</b>		<b>1,379</b>	<b>2,152</b>

\* This VDU is being sold by the acre. There are no cruise statistics available.

**VDU TO PAYMENT UNIT**

When a VDU is associated with more than one Payment Unit (PU), the VDU volumes are assigned to the PU based on acres of the VDU within the PU.

VDU	VDU ACRES	PU	PU ACRES
<b>TOTAL:</b>			

**DESCRIPTION OF TIMBER BY PAYMENT UNIT (PU)**

PU	MARKET GROUP	PRODUCT	QUANTITY	UNIT	ACRES	ADVERTISE PRICE
1	Misc. Species 1	Pulpwood	4.7	Acres	4.8	\$23.50
2	Balsam Fir	Pulpwood	16	Cords	29.7	\$26,457.25
	Mixed Aspen		2	Cords		
	<i>Quaking Aspen</i>		2	<i>Cords</i>		
	Mixed Hardwood		6	Cords		
	<i>Black Cherry</i>		6	<i>Cords</i>		
	Paper Birch		2	Cords		
	Red Pine		348	Cords		
	White Pine		5	Cords		
3	Red Pine	Pulpwood	203	Cords	18.8	\$15,225.00
4	Red Pine	Pulpwood	84	Cords	13.8	\$6,300.00
5	Red Maple	Sawtimber	1.0	MBF	10.7	\$4,327.25
	Sugar Maple		7.4	MBF		
	Balsam Fir	Pulpwood	11	Cords		
	Mixed Aspen		59	Cords		
	<i>B. T. Aspen</i>		59	<i>Cords</i>		
	Mixed Hardwood		55	Cords		
	<i>Red Maple</i>		7	<i>Cords</i>		
	<i>Sugar Maple</i>		48	<i>Cords</i>		
6	Red Pine	Pulpwood	57	Cords	11.0	\$4,275.00
7	Red Maple	Sawtimber	0.7	MBF	11.4	\$4,354.40
	Sugar Maple		5.3	MBF		
	Mixed Aspen	Pulpwood	3	Cords		
	<i>B. T. Aspen</i>		3	<i>Cords</i>		
	Mixed Hardwood		102	Cords		
	<i>Ironwood</i>		4	<i>Cords</i>		
	<i>Red Maple</i>		10	<i>Cords</i>		
	<i>Sugar Maple</i>		88	<i>Cords</i>		
	Red Pine		13	Cords		
TOTAL:			14.4	MBF		
TOTAL:			966	Cords		
TOTAL:			4.7	Acres		

## Sale Specific Conditions & Requirements

Sale Name: Can You Hear Me Now

Sale Number: 45-113-25 Seq#: 1

### 1 - Sale Area

#### 1.2 - Boundaries

##### 1.2.1 - Painted Boundaries (9/19)

The sale boundary and Payment Unit boundaries are marked and identified by red and purple paint. Exterior sale boundary lines against state are marked with red paint. Interior Payment Unit boundaries are marked with purple paint. The painted boundary line trees are not Included Timber and are to be protected unless marked with orange paint. Purple painted trees designating an interior Payment Unit boundary are only to be cut when if marked with orange paint.

### 2 - Timber Specifications

#### 2.1 - Included Timber

##### 2.1.1 - Clearcut Unit(s) with Unmerchantable Trees (6/14)

Within Payment Unit(s) 1, cut all trees that are two (2) inches or more at DBH.

##### 2.1.3 - Cut Tree Marked Unit(s) (12/08)

Within Payment Unit(s) 3, 4, 5, 7, all trees are designated for cutting when marked with orange paint above and below stump height, regardless of merchantability.

##### 2.1.4 - Designated Timber Unit(s) (6/17)

Within Payment Unit(s) 6, all red pine trees are designated for cutting, except those marked with green paint.

##### 2.1.8 - Designated Plantation Row Unit(s) (12/24)

Within Payment Unit(s) 2, all trees which meet minimum piece specifications in 2.2 Utilization, within designated plantation rows, are designated for cutting. Designated plantation rows are every third row. Begin with the third row in from the outside of the plantation, then continue every third row. Because of the variability of row direction, it shall be the responsibility of the Purchaser to maintain the third-row sequence.

##### 2.1.11 - Description of Timber Note (2/04)

Note that Payment Unit 1 is a grass opening with a low density mix of scattered conifer. It is being sold by the acre as Misc. Species 1.

#### 2.2 - Utilization

##### 2.2.3 - Stump Heights (12/24)

Stump heights within Payment Unit(s) 2, 3 & 4 shall not exceed six (6) inches for all trees.

##### 2.2.9 - No Chipping Permitted (12/08)

Within Payment Unit(s) 2-7, all wood must be removed by whole tree, tree segment, or roundwood. No chipping is permitted.

### 3 - Payments

#### 3.3 - Pre-measured Sales

##### 3.3.4 - Dividing Payment Units (7/14)

Payment Unit(s) 1-7 may be divided at the request of the Purchaser and upon approval of the Unit Manager. Dividing Payment Units is a contract modification which requires a Timber Sale Contract Amendment. There will be only one division per Payment Unit.

#### 3.4 - Damaged Timber

##### 3.4.1 - Damaged Timber (12/24)

General Condition and Requirement 3.4 Damaged Timber, defines liquidated damages for undesignated live merchantable trees which are cut or injured. In addition, extreme care should be taken to avoid damage to tree seedlings and saplings.

Within the Sale Area, if more than 20% of the tree seedlings or saplings (1/4" to 4.5" DBH) within a specified portion of the

Sale Area are damaged, liquidated damages will be assessed at \$250 per acre for all acreage within that specified portion of the Sale Area that was damaged.

No damage is acceptable to undesignated live merchantable trees. Within the Sale Area, if more than 5 % of trees (> 4.5" DBH) within a specified area of the sale are damaged, liquidated damages will be assessed for all trees damaged. Rates will be in accordance with General Condition and Requirement 3.4 Damaged Timber.

#### **4 - Transportation**

##### 4.1 - Construction

###### 4.1.3 - Slash and Earthen Piles (8/04)

Piles or windrows of earth along roads and landings that have been widened or constructed shall be leveled. Slash from road maintenance or construction, including stumps, shall be dispersed throughout the sale.

###### 4.1.12 - No New Roads (1/12)

No new roads will be permitted in any Payment Unit. All operations are limited to existing roads. Only Skid trails will be allowed.

##### 4.2 - Maintenance

###### 4.2.1 - Hauling Restriction (12/08)

Hauling is restricted on Hog Island Rd. The restriction may occur during spring breakup or during wet weather conditions. Contact the Mackinac County Road Commission for appropriate permits needed for hauling.

###### 4.2.3 - Road maintenance (8/13)

The following road maintenance is required: Within 60 days of completion of hauling, or if no hauling occurs for 60 days, the road must be maintained and graded. This includes cleaning of drainage areas, grading, crowning and filling with gravel, if necessary. Damages will be assessed if grading/repair does not occur.

###### 4.2.5 - Two Wheel Drive Condition (2/04)

All existing trail roads on and adjacent to the Sale Area must be passable by two-wheel drive traffic for the duration of the sale.

#### **5 - Operations**

##### 5.2 - Conduct of Operations

###### 5.2.2 - Hazard Trees/Snags

###### 5.2.2.1 - Den Trees (10/16)

Obvious hollow and/or den trees shall be protected and left standing unless they are a safety hazard.

###### 5.2.3 - Operating Restrictions

###### 5.2.3.1 - Operating Restrictions (9/11)

Within Payment Unit(s) 5 & 7, unless changed by written agreement, cutting and skidding are limited to the period of Dec 1 to March 31. This restriction is for deer browse within the deer wintering complex.

###### 5.2.3.3 - Bark Slippage Restriction (3/09)

Within Payment Unit(s) 5 & 7, unless changed by written agreement, cutting and skidding are not permitted during the period of May 1 to July 15. This restriction is because of bark slippage.

###### 5.2.32 - Decking/Landing Restoration (9/13)

All decking and landing areas must have the surface area restored to a condition equal to or better than before. This is to ensure the proper regeneration of the stand. Wood debris, chips and "cookies" from trimmings must be removed or scattered away from landing and loading areas and may not be windrowed on the edge.

###### 5.2.38 - No Decking Against Live Trees (2/04)

Cut products may not be decked against unmarked or designated leave trees.

###### 5.2.41 - Snowmobile Trail Protection (9/11)

Hog Island Rd is a snowmobile trail and is shown on the Timber Sale Map. Do not cut or damage posts with orange trail markers or traffic control signs. If the trail is used, it must be maintained and restored to a condition equal to or better than before the sale. The road maintenance/restoration must be done prior to December 1. If the trail is used for hauling, it must be graded to the satisfaction of the Unit Manager or his/her representative prior to December 1. If the trail road is to be used for hauling during the snowmobile season, then a snow-covered base must be left on the trail. Maintain a 20-foot-wide slash, debris, and rut free zone daily using the snowmobile trail as the centerline. No decking of forest products will be permitted along the snowmobile trail.

#### 5.8 - Protection of Endangered Species

##### 5.8.5 - Protection of Raptor Nests (3/13)

All trees with raptor nests will be protected if found during harvesting operations. Notification will be made to the Unit Manager or his/her representative who will notify the Wildlife Biologist so an onsite evaluation and recommendation can be made, if necessary.

### 6 - Safety and Fire Prevention

#### 6.2 - Signing

##### 6.2.1 - Road Posting (10/20)

The Purchaser is responsible for posting and maintaining caution signs on Hog Island Rd and Tilden Rd prior to beginning operations. The road must be posted at appropriate distances from the Sale Area to warn of logging activity and truck traffic. Signs must be removed when harvest operations are suspended or completed. The Purchaser will provide these signs.

##### 6.2.2 - Snowmobile Trail Posting (10/20)

The Purchaser is responsible for posting and maintaining caution signs on Hog Island Rd prior to beginning operations during the snowmobile season (approximately December 1 to March 31). The trail must be posted at appropriate distances from the Sale Area to warn of logging activity and truck traffic. Signs must be removed when harvest operations are suspended or completed. The Purchaser will provide these signs.



### TIMBER SALE MAP

This information provided by authority of Part 525, 1994 PA 451, as amended.

Sale Number  
**45-113-25**

Date  
**09/26/2025**

Forest Management Unit  
Sault Ste Marie Mgt Unit

County  
Mackinac

Mapped By: Luoto  
Cruised By: DNR Staff

Scale  
**1:15,840**

Page  
**1**

Of  
**1**

Township  
43N

Range  
07W /

Section(s) and  
Subdivision(s) Sec. 13 SENW,S1/2NE,N1/2SE; Sec. 18 E1/2NW,SWNE,N1/2SW,SESW,SWSE;

#### Cover Type

A = Aspen	J = Jack Pine	O = Oak	U = Upland Brush
B = Paper Birch	K = Rock	P = Lowland Poplar	UM = Upland Mix Forest
C = Cedar	L = Lowland Brush	Q = Mixed Swamp Conifer	V = Bog or Marsh
D = Treed Bog	LM = Lowland Mix Forest	R = Red Pine	W = White Pine
E = Swamp Hardwoods	M = Maple, Beech, Birch	S = Black Spruce	X = Non Stocked
F = Spruce/Fir	MC = Mixed Conifer	T = Tamarack	Y = Sand
G = Grass	MD = Mixed Deciduous	Z = Water	
H = Hemlock	N = Marsh		

#### Density

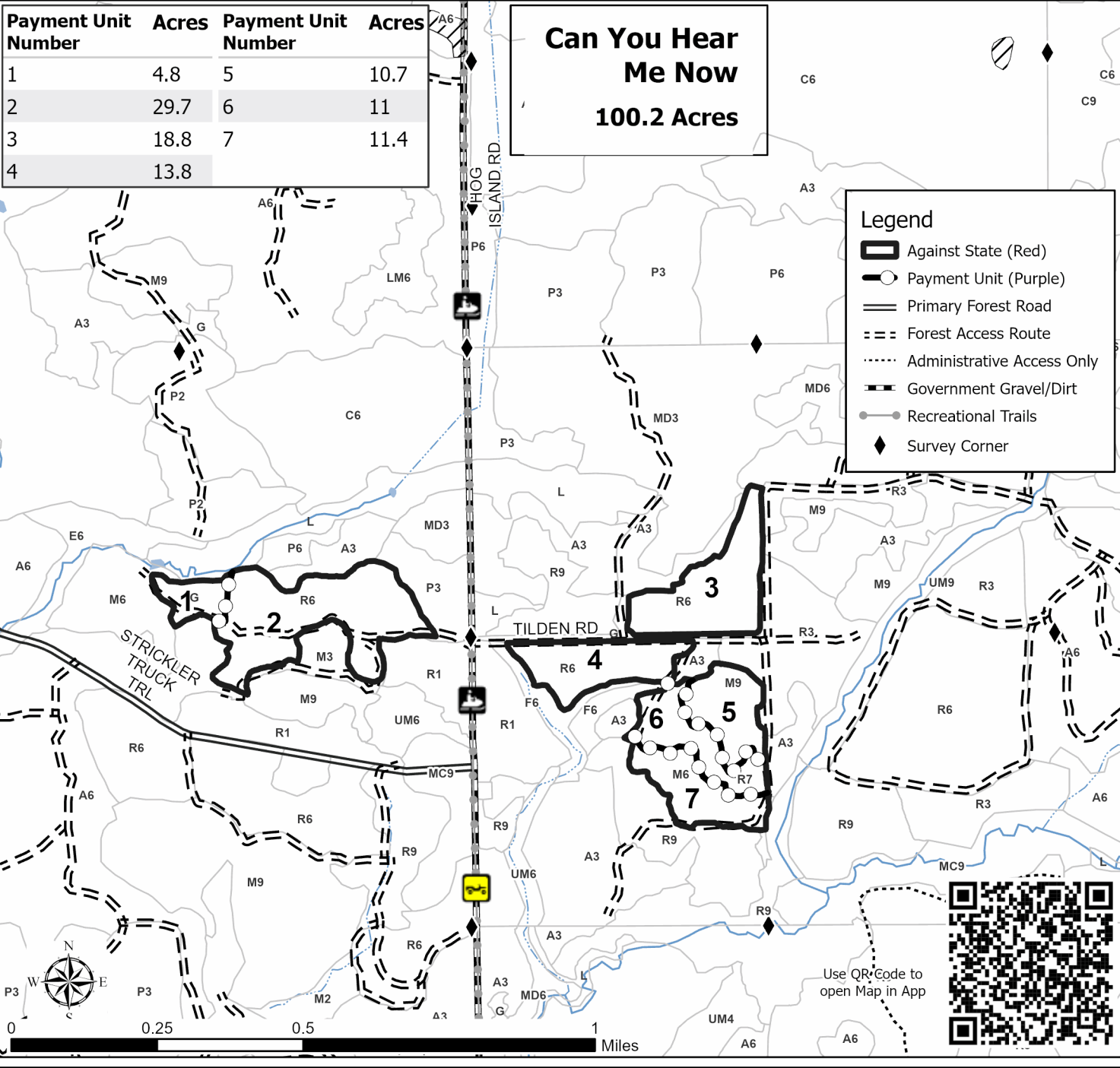
0 = Non Stocked	5 = Pole Timber Medium
1 = Seedling Sapling Poor	6 = Pole Timber Well
2 = Seedling Sapling Medium	7 = Saw Timber Poor
3 = Seedling Sapling Well	8 = Saw Timber Medium
4 = Pole Timber Poor	9 = Saw Timber Well

Payment Unit Number	Acres	Payment Unit Number	Acres
1	4.8	5	10.7
2	29.7	6	11
3	18.8	7	11.4
4	13.8		

**Can You Hear Me Now**  
**100.2 Acres**

#### Legend

- Against State (Red)
- Payment Unit (Purple)
- Primary Forest Road
- Forest Access Route
- Administrative Access Only
- Government Gravel/Dirt
- Recreational Trails
- Survey Corner



Use QR Code to open Map in App



## TIMBER SALE INFORMATION

### Dinky Mix (45-119-25)

T44N, R07W, SEC. 30; T44N, R07W, SEC. 31; T44N, R08W, SEC. 25; T44N, R08W, SEC. 36.  
Mackinac County (Advertised Price \$30,059.10)

SALE NOTE: The Dinky Line is a year round restricted county road and will need appropriate permits from the Mackinac County Road Commission before any hauling can begin.

A recreation site such as a trail, pathway, or campground is within the sale area or the vicinity. Certain restrictions/specifications may be applicable including time restrictions.

A timber sale contract for this lump sum, sealed bid timber sale will be awarded to the responsible bidder offering the highest sealed bid price. All units of volume listed below were estimated using the Inventory Manager computer program and the new Michigan taper model. Bids must be at or above the following advertised price for each product and species:

<u>PRODUCTS &amp; SPECIES</u>	<u>ESTIMATED UNITS*</u>	<u>ADVERTISED PRICE</u>
Sawtimber		
Sugar Maple	1.8 MBF	\$ 293.00 / MBF
Pulpwood		
Balsam Fir	214 Cords	\$ 8.75 / Cord
Jack Pine	2 Cords	\$ 24.20 / Cord
Mixed Aspen	1,135 Cords	\$ 17.70 / Cord
Mixed Hardwood	385 Cords	\$ 16.70 / Cord
N. White Cedar	20 Cords	\$ 4.20 / Cord
Red Pine	5 Cords	\$ 95.10 / Cord
White Pine	4 Cords	\$ 14.25 / Cord
White Spruce	49 Cords	\$ 9.70 / Cord

\* The total volume is statistically estimated within plus (+) or minus (-) 17.36 percent. There are an estimated 1,817 cords on this timber sale, plus or minus 316 cords at the 95% confidence level. The estimated units are final and not subject to adjustment. Prospective bidders are urged to examine this timber and to make their own estimates of quantity and quality.

### **BOND AND PAYMENT SCHEDULE:**

1. A bond in the amount of \$3,006.00 to insure faithful performance of the conditions of the contract will be deposited by the successful bidder within 21 days of the sale award.
2. Cutting in any sale or unit without the required advance payment would be considered a trespass.
3. Total payment must be paid in advance or according to the following schedule :
  - (a) Ten percent (10%) of the sale value must be paid within 21 days of the sale award.
  - (b) The 10% down payment will be credited towards the first unit cut.
  - (c) Payment for each of the following units must be made before cutting begins in that unit:

PAYMENT UNIT NUMBER	PERCENT OF TOTAL SALE VALUE
01	5.8%
02	46.4%
03	33.9%
04	2.4%
05	11.5%

4. If no cutting takes place, the 10% down payment will not be refunded.
5. Operations on the contract issued will terminate on 12/31/2029.

### **SALE STATISTICS**

Volumes were calculated in cubic feet using the Michigan taper model. Cubic foot volume includes all wood inside bark for the product indicated. For display purposes, cubic feet were converted to cords and MBF using a simple conversion factor, e.g. 79 cubic feet per cord and 185 cubic feet per MBF. The cubic foot volumes are precise; the cords and MBF volumes are not. Cubic foot volume cannot be directly converted to cords or boards with precision.

**SALE VOLUMES**

The total estimated sale volume may not equal the sum of the species/products due to the nature of statistical calculations associated with double sampling methodology.

VOLUME			STATISTICAL RANGE IN CORDS	
TOTAL CUBIC FEET	TOTAL CORDS	PERCENT ERROR	MINIMUM	MAXIMUM
143,566	1,817	17.36%	1,502	2,133

**VDU VOLUMES**

A VDU is a Volume Determination Unit. Volumes and their associated statistics are calculated at the VDU level and summarized to the sale level. There is often a one to one relationship between a VDU and a Payment Unit, but not always, depending on the cruise design. Refer to the VDU TO PAYMENT UNIT table.

	VOLUME			RANGE IN CORDS	
VDU	TOTAL CUBIC FEET	TOTAL CORDS	PERCENT ERROR	MINIMUM	MAXIMUM
18	38,746	490	23.25%	376	604
20	80,095	1,014	28.03%	730	1,298
53	17,595	223	31.88%	152	294
71	7,130	90	54.10%	41	139
<b>TOTAL:</b>	<b>143,566</b>	<b>1,817</b>		<b>1,299</b>	<b>2,335</b>

**VDU TO PAYMENT UNIT**

When a VDU is associated with more than one Payment Unit (PU), the VDU volumes are assigned to the PU based on acres of the VDU within the PU.

VDU	VDU ACRES	PU	PU ACRES
<b>TOTAL:</b>			

**DESCRIPTION OF TIMBER BY PAYMENT UNIT (PU)**

PU	MARKET GROUP	PRODUCT	QUANTITY	UNIT	ACRES	ADVERTISE PRICE
1	Mixed Aspen	Pulpwood	66	Cords	2.3	\$1,742.50
	<i>B. T. Aspen</i>		26	<i>Cords</i>		
	<i>Quaking Aspen</i>		40	<i>Cords</i>		
	Mixed Hardwood		23	Cords		
	<i>Beech</i>		1	<i>Cords</i>		
	<i>Black Cherry</i>		6	<i>Cords</i>		
	<i>Paper Birch</i>		4	<i>Cords</i>		
	<i>Red Maple</i>		9	<i>Cords</i>		
	<i>Sugar Maple</i>		3	<i>Cords</i>		
	Red Pine		2	Cords		
2	Balsam Fir	Pulpwood	160	Cords	29.6	\$13,941.50
	Jack Pine		1	Cords		
	Mixed Aspen		586	Cords		
	<i>B. T. Aspen</i>		171	<i>Cords</i>		
	<i>Balsam Poplar</i>		12	<i>Cords</i>		
	<i>Quaking Aspen</i>		403	<i>Cords</i>		
	Mixed Hardwood		102	Cords		
	<i>Black Cherry</i>		18	<i>Cords</i>		
	<i>Ironwood</i>		1	<i>Cords</i>		
	<i>Paper Birch</i>		7	<i>Cords</i>		
	<i>Red Maple</i>		22	<i>Cords</i>		
	<i>Sugar Maple</i>		50	<i>Cords</i>		
	<i>Yellow Birch</i>		4	<i>Cords</i>		
	N. White Cedar		18	Cords		
	Red Pine		1	Cords		
	White Pine		2	Cords		
White Spruce	25	Cords				
3	Balsam Fir	Pulpwood	50	Cords	23.6	\$10,178.10
	Jack Pine		1	Cords		
	Mixed Aspen		461	Cords		
	<i>B. T. Aspen</i>		256	<i>Cords</i>		
	<i>Balsam Poplar</i>		17	<i>Cords</i>		
	<i>Quaking Aspen</i>		188	<i>Cords</i>		
	Mixed Hardwood		68	Cords		
	<i>Black Cherry</i>		6	<i>Cords</i>		
	<i>Ironwood</i>		1	<i>Cords</i>		
	<i>Paper Birch</i>		4	<i>Cords</i>		
	<i>Red Maple</i>		10	<i>Cords</i>		
	<i>Sugar Maple</i>		47	<i>Cords</i>		
	N. White Cedar		2	Cords		
	Red Pine		2	Cords		
	White Pine		2	Cords		
White Spruce	20	Cords				
4	Sugar Maple	Sawtimber	0.3	MBF	3.1	\$728.25
	Balsam Fir	Pulpwood	1	Cords		
	Mixed Aspen		4	Cords		
	<i>B. T. Aspen</i>		4	<i>Cords</i>		
	Mixed Hardwood		33	Cords		
	<i>Ironwood</i>		1	<i>Cords</i>		
	<i>Paper Birch</i>		1	<i>Cords</i>		
	<i>Sugar Maple</i>		31	<i>Cords</i>		
	White Spruce		1	Cords		
	5		Sugar Maple	Sawtimber		
Balsam Fir		Pulpwood	3	Cords		
Mixed Aspen			18	Cords		
<i>B. T. Aspen</i>			18	<i>Cords</i>		

**DESCRIPTION OF TIMBER BY PAYMENT UNIT (PU), CON'T**

PU	MARKET GROUP	PRODUCT	QUANTITY	UNIT	ACRES	ADVERTISE PRICE
5 con't	Mixed Hardwood	Pulpwood	159	Cords		
	<i>Ironwood</i>		2	<i>Cords</i>		
	<i>Paper Birch</i>		3	<i>Cords</i>		
	<i>Sugar Maple</i>		154	<i>Cords</i>		
	White Spruce		3	Cords		
TOTAL:			1.8	MBF		
TOTAL:			1,814	Cords		

## Sale Specific Conditions & Requirements

**Sale Name: Dinky Mix**

**Sale Number: 45-119-25 Seq#: 1**

### 1 - Sale Area

#### 1.2 - Boundaries

##### 1.2.1 - Painted Boundaries (9/19)

The sale boundary and Payment Unit boundaries are marked and identified by blue and red paint. Exterior sale boundary lines against private property are marked with blue paint. Exterior sale boundary lines against state are marked with red paint. Retention patches are marked with red paint; no harvesting activities may occur within these areas. The painted boundary line trees within PU's 4 & 5 are not Included Timber and are to be protected unless marked with orange paint.

### 2 - Timber Specifications

#### 2.1 - Included Timber

##### 2.1.1 - Clearcut Unit(s) with Unmerchantable Trees (6/14)

Within Payment Unit(s) 1, cut all trees that are two (2) inches or more at DBH.

Within Payment Unit(s) 2 & 3, cut all deciduous trees that are two (2) inches or more at DBH and all conifers that are four (4) inches or more at DBH. Additionally, do not cut any white pine over 20" DBH or any trees marked with green paint.

##### 2.1.3 - Cut Tree Marked Unit(s) (12/08)

Within Payment Unit(s) 4 & 5, all trees are designated for cutting when marked with orange paint above and below stump height, regardless of merchantability. Additionally, all merchantable aspen and fir are designated to be cut unless marked with green paint.

#### 2.2 - Utilization

##### 2.2.9 - No Chipping Permitted (12/08)

Within Payment Unit(s) 4 & 5, all wood must be removed by whole tree, tree segment, or roundwood. No chipping is permitted.

### 3 - Payments

#### 3.3 - Pre-measured Sales

##### 3.3.4 - Dividing Payment Units (7/14)

Payment Unit(s) 1-5 may be divided at the request of the Purchaser and upon approval of the Unit Manager. Dividing Payment Units is a contract modification which requires a Timber Sale Contract Amendment.

#### 3.4 - Damaged Timber

##### 3.4.1 - Damaged Timber (12/24)

General Condition and Requirement 3.4 Damaged Timber, defines liquidated damages for undesignated live merchantable trees which are cut or injured. In addition, extreme care should be taken to avoid damage to tree seedlings and saplings. No damage is acceptable to undesignated live merchantable trees. Within the Sale Area, if more than 5% of trees (> 4.5" DBH) within a specified area of the sale are damaged, liquidated damages will be assessed for all trees damaged. Rates will be in accordance with General Condition and Requirement 3.4 Damaged Timber.

### 4 - Transportation

#### 4.1 - Construction

##### 4.1.3 - Slash and Earthen Piles (8/04)

Piles or windrows of earth along roads and landings that have been widened or constructed shall be leveled. Slash from road maintenance or construction, including stumps, shall be dispersed throughout the sale.

##### 4.1.4 - Timber Removed for Construction (3/23)

Trees cut or damaged in the process of pre-approved road, landing, or skid trail construction will be decked in an area separate from other Designated Timber and not removed until measured by the Sale Administrator. Payment will be made at

contract prices or average prices, if not on the contract.

#### 4.1.6 - Road Construction (4/24)

Construction of new roads or improvements of existing roads shall be done in such a way as to minimize the environmental and visual impacts. Merchantable trees shall be cut and utilized unless otherwise directed. Non-merchantable trees shall be severed and laid flat on the ground. Slash shall be scattered, not left in windrows, and kept a minimum of 10 feet back from the road edge. Stumps shall be set upright, not left on edge, and be moved at least 10 feet away from the road edge. Disturbed soil shall be feathered into the woods and not left in berms or windrows.

#### 4.1.7 - Road Closure (10/11)

All new roads built into the sale must be blocked to vehicle traffic upon completion of the sale. Overgrown roads that are reopened shall be considered new roads. In general, this will require constructing a four (4') foot high berm of stumps and logs covered with earth. These roads must be rendered impassable to cars and trucks. Contact the Sale Administrator for specific details of design and placement.

### 4.2 - Maintenance

#### 4.2.1 - Hauling Restriction (12/08)

Hauling is year round restricted on the Dinky Line Rd. The restriction requires all necessary permits to be acquired from MCRC before hauling can begin.

#### 4.2.3 - Road maintenance (8/13)

The following road maintenance is required: Within 60 days of completion of hauling, or if no hauling occurs for 60 days, the road must be maintained and graded. This includes cleaning of drainage areas, grading, crowning and filling with gravel, if necessary. Damages will be assessed if grading/repair does not occur.

#### 4.2.5 - Two Wheel Drive Condition (2/04)

All existing trail roads on and adjacent to the Sale Area must be passable by two-wheel drive traffic for the duration of the sale.

## 5 - Operations

### 5.2 - Conduct of Operations

#### 5.2.1 - Slash

##### 5.2.1.11 - Slash for Reforestation (3/21)

To facilitate reforestation, PU's 4 & 5 shall be left with slash evenly distributed. Slash should be left at a minimum of 4 to 6 feet high to discourage deer browse. Stumps shall be cut low to the ground.

#### 5.2.2 - Hazard Trees/Snags

##### 5.2.2.1 - Den Trees (10/16)

Obvious hollow and/or den trees shall be protected and left standing unless they are a safety hazard.

#### 5.2.3 - Operating Restrictions

##### 5.2.3.3 - Bark Slippage Restriction (3/09)

Within Payment Unit(s) 4 & 5, unless changed by written agreement, cutting and skidding are not permitted during the period of May 1 to July 15. This restriction is because of bark slippage.

#### 5.2.32 - Decking/Landing Restoration (9/13)

All decking and landing areas must have the surface area restored to a condition equal to or better than before. This is to ensure the proper regeneration of the stand. Wood debris, chips and "cookies" from trimmings must be removed or scattered away from landing and loading areas and may not be windrowed on the edge.

#### 5.2.38 - No Decking Against Live Trees (2/04)

Cut products may not be decked against unmarked or designated leave trees.

#### 5.2.39 - ORV Trail/Route Protection (4/18)

The ORV trail is shown on the Timber Sale Map. Do not cut trees or damage posts with yellow ORV markers. All stumps within five (5) feet of the trail must be cut flush with the ground. Maintain a 20-foot-wide slash, debris, and rut free zone daily

using the ORV trail or route as the centerline. No decking within 50 feet of the ORV trail is permitted. Do not run equipment down the ORV trail or route. Skidding across the trail or route may only occur in locations approved by the Sale Administrator.

#### 5.2.41 - Snowmobile Trail Protection (9/11)

The snowmobile trail is shown on the Timber Sale Map. Do not cut or damage posts with orange trail markers or traffic control signs. If the trail is used, it must be maintained and restored to a condition equal to or better than before the sale. The road maintenance/restoration must be done prior to December 1. If the trail is used for hauling, it must be graded to the satisfaction of the Unit Manager or his/her representative prior to December 1. If the trail road is to be used for hauling during the snowmobile season, then a snow-covered base must be left on the trail. The snowmobile trail may only be crossed at right angles. Maintain a 20-foot-wide slash, debris, and rut free zone daily using the snowmobile trail as the centerline. No decking of forest products will be permitted within 50 feet of the snowmobile trail. All stumps within 5 feet of the snowmobile trail must be cut at ground level.

### 5.8 - Protection of Endangered Species

#### 5.8.5 - Protection of Raptor Nests (3/13)

All trees with raptor nests will be protected if found during harvesting operations. Notification will be made to the Unit Manager or his/her representative who will notify the Wildlife Biologist so an onsite evaluation and recommendation can be made, if necessary.

## 6 - Safety and Fire Prevention

### 6.2 - Signing

#### 6.2.1 - Road Posting (10/20)

The Purchaser is responsible for posting and maintaining caution signs on the Dinky Line Rd prior to beginning operations. The road must be posted at appropriate distances from the Sale Area to warn of logging activity and truck traffic. Signs must be removed when harvest operations are suspended or completed. The Purchaser will provide these signs.

#### 6.2.2 - Snowmobile Trail Posting (10/20)

The Purchaser is responsible for posting and maintaining caution signs on the snowmobile trail prior to beginning operations during the snowmobile season (approximately December 1 to March 31). The trail must be posted at appropriate distances from the Sale Area to warn of logging activity and truck traffic. Signs must be removed when harvest operations are suspended or completed. The Purchaser will provide these signs.

#### 6.2.3 - Recreational Trail Posting (10/20)

The Purchaser is responsible for posting and maintaining caution signs on the ORV trail prior to beginning operations. The trail must be posted at appropriate distances from the Sale Area to warn of logging activity and truck traffic at both ends of the trail. Signs must be removed when harvest operations are suspended or completed. The Purchaser will provide these signs.



### TIMBER SALE MAP

This information provided by authority of Part 525, 1994 PA 451, as amended.

Sale Number	Date
<b>45-119-25</b>	09/19/2025

Forest Management Unit	County	Mapped By: Plato
Sault Ste Marie Mgt Unit	Mackinac	Cruised By: Naubinway FO Staff

Scale	Page	Of
1:15,840	1	1

Township	Range	Section(s) and Subdivision(s)
44N	07W /	Sec. 25 SESE; Sec. 30 S1/2SW; Sec. 31 N1/2NW, SENW, NWNE, S1/2NE, NWSE; Sec. 36 E1/2NE;

Cover Type			
A = Aspen	J = Jack Pine	O = Oak	U = Upland Brush
B = Paper Birch	K = Rock	P = Lowland Poplar	UM = Upland Mix Forest
C = Cedar	L = Lowland Brush	Q = Mixed Swamp Conifer	V = Bog or Marsh
D = Treed Bog	LM = Lowland Mix Forest	R = Red Pine	W = White Pine
E = Swamp Hardwoods	M = Maple, Beech, Birch	S = Black Spruce	X = Non Stocked
F = Spruce/Fir	MC = Mixed Conifer	T = Tamarack	Y = Sand
G = Grass	MD = Mixed Deciduous	Z = Water	
H = Hemlock	N = Marsh		

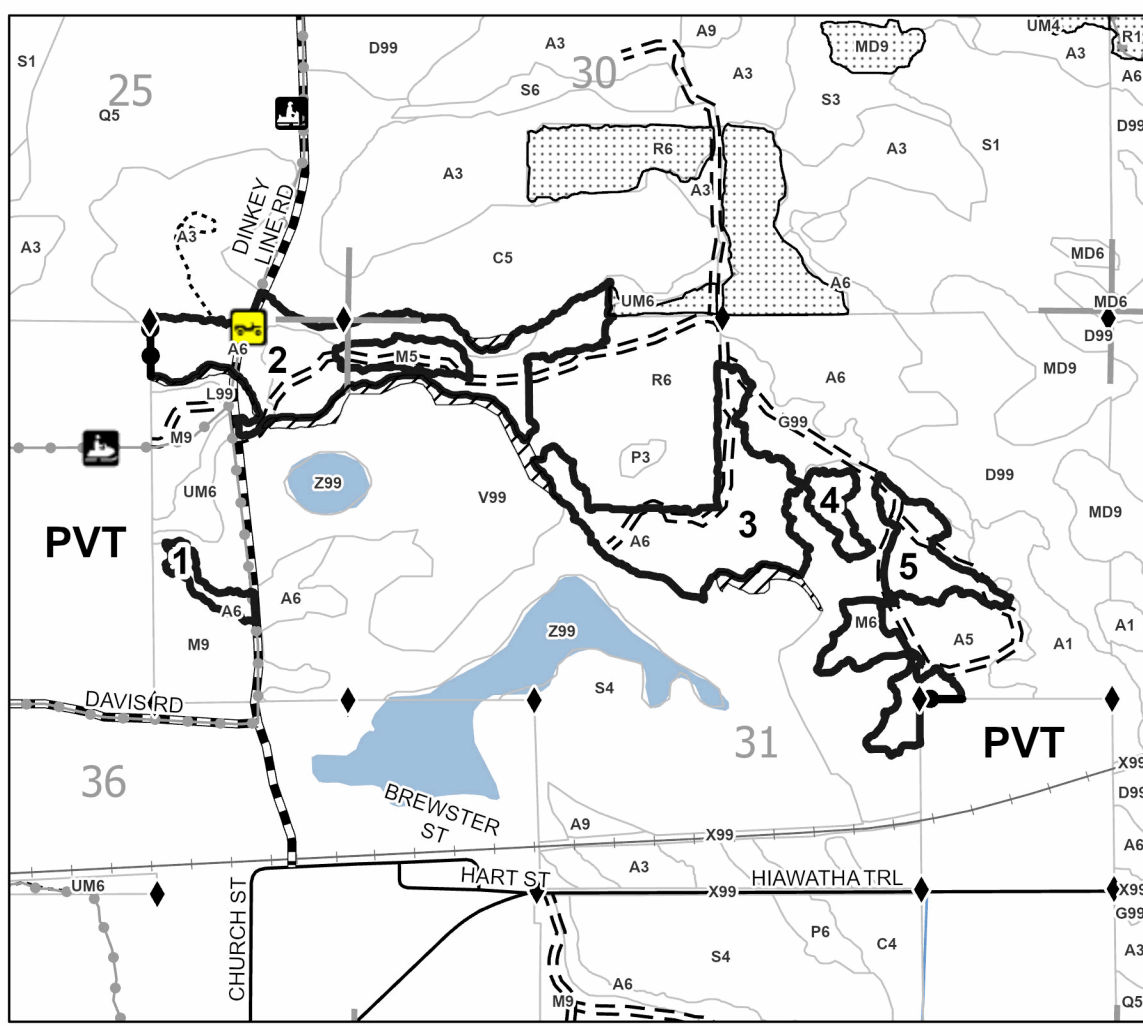
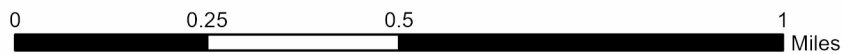
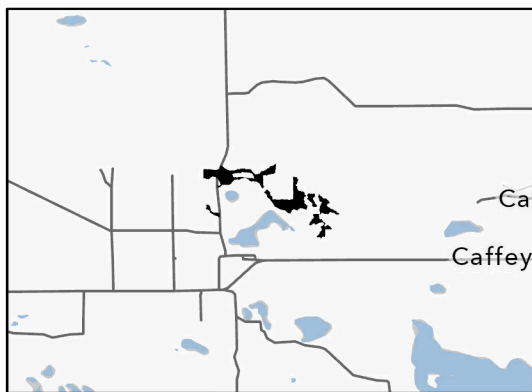
Density	
0 = Non Stocked	5 = Pole Timber Medium
1 = Seedling Sapling Poor	6 = Pole Timber Well
2 = Seedling Sapling Medium	7 = Saw Timber Poor
3 = Seedling Sapling Well	8 = Saw Timber Medium
4 = Pole Timber Poor	9 = Saw Timber Well

Payment Unit Number	Acres
1	2.3
2	29.6
3	23.6
4	3.1
5	15.5

## Dinky Mix

74.1 Acres

### Locator Map 1:100,000



### Legend

- Against State (Red)
- Private Line (Blue)
- Active Railroad
- Recreational Trails
- Survey Grade Corner
- Forest Access Route
- Administrative Access Only
- Paved Road
- Government Gravel/Dirt
- Nearby Timber Sales
- Retention Areas

Use QR Code to open Map in App



Can You Hear Me Now (45-113-25)  
T43N, R07W, SEC. 18; T43N, R08W, SEC. 13; Mackinac COUNTY

In response to the notice of sale to be held 3:00 p.m. (local time) on May 19, 2026, I am hereby submitting my sealed bid ( firm offer) for the following forest products to be cut. Bids for individual species must be at or above the advertised price. All non-responsive bid forms may be rejected.

<u>PRODUCTS &amp; SPECIES</u>	<u>ESTIMATED VOLUME*</u>	<u>ADVERTISED PRICE</u>	<u>BID PRICE/UNIT</u>
<b>Sawtimber</b>			
Red Maple	1.7 MBF	\$ 100.00/MBF	\$ _____
Sugar Maple	12.7 MBF	\$ 293.00/MBF	\$ _____
<b>Pulpwood</b>			
Balsam Fir	27 Cords	\$ 8.75/Cord	\$ _____
Misc. Species 1	4.7 Acres	\$ 5.00/Acres	\$ _____
Mixed Aspen	64 Cords	\$ 17.70/Cord	\$ _____
Mixed Hardwood	163 Cords	\$ 16.70/Cord	\$ _____
Paper Birch	2 Cords	\$ 5.20/Cord	\$ _____
Red Pine	705 Cords	\$ 75.00/Cord	\$ _____
White Pine	5 Cords	\$ 14.25/Cord	\$ _____

\*The volumes are statistically estimated within plus (+) or minus (-) 11.74 percent at 95% confidence level. These estimated volumes are final and not subject to adjustment. Prospective bidders are urged to examine this timber and to make their own estimates of quantity and quality.

I understand that any or all bids may be rejected. All bids must be signed and all bid items must be bid or the bid form may be rejected. I also understand that consideration and awarding a contract will be based upon my past performance and ability to complete the contract based upon equipment and staffing subject to my control.

FEDERAL ID: \_\_\_\_ - \_\_\_\_ - \_\_\_\_ or SOCIAL SECURITY NUMBER: \_\_\_\_ - \_\_\_\_ - \_\_\_\_

Company or individual bidding: \_\_\_\_\_

Company representative's name: \_\_\_\_\_

Address: \_\_\_\_\_

City: \_\_\_\_\_ State: \_\_\_\_\_ Zip: \_\_\_\_\_

IF AVAILABLE, PLEASE PLACE THE PERSONALIZED LABEL FROM YOUR PROSPECTUS IN THE ABOVE BOX.

Individual or company representative's signature: \_\_\_\_\_ Date: \_\_\_\_\_

Phone number : \_\_\_\_\_ Email (optional): \_\_\_\_\_

**THE WINNING BIDDER MUST COMPLETE THE VERIFICATION OF WORKER'S DISABILITY COMPENSATION ACT COMPLIANCE (ON REVERSE SIDE IF DOUBLE SIDED) WITHIN 21 DAYS OF SALE AWARD DATE**



<b>FOR DEPARTMENT USE ONLY</b>
Sale Number (XX - XXX - XX - XX)
Forest Management Unit:

## TIMBER SALE VERIFICATION OF WORKER'S DISABILITY COMPENSATION ACT COMPLIANCE

*As required by Act 317, P.A. 1969 (Worker's Compensation) and  
Part 5 of Act 451 of 1994, as amended.*

### VERIFICATION OF WORKER'S DISABILITY COMPENSATION ACT COMPLIANCE

- This verification must be completed and submitted within 21 days of contract award and prior to the issuance of the timber sale contract.
- In addition, if boxes 2B or 2C are checked, then Notice of Exclusion or Certificate of Insurance must be submitted within twenty-one (21) days of the contract award and prior to the issuance of the timber sale contract.
- All information must be typed or printed except for written signatures.

Please Check Appropriate Categories:

1. My business is organized as (you **must** check one of the boxes below):
  - A.  Sole Proprietorship (individual)
  - B.  Partnership
  - C.  Corporation
2. You **must** check one of the boxes below:
  - A.  I certify my business is a sole proprietorship and it has no employees but the sole proprietor. I am not subject to the Worker's Compensation Laws.
  - B.  I certify my business has satisfied its obligation to the Worker's Compensation Act through the use of an approved Notice of Exclusion (BWC-337, Rev. 5/96). I will provide a copy of the Notice of Exclusion within 21 days of the contract award. (For questions or a copy of the BWC-337, please call the Worker's Compensation Bureau at 517-322-1195).
  - C.  I certify my business has a Worker's Compensation Policy. I will provide an original Certificate of Insurance within twenty-one (21) days of the contract award.
3. If you have checked item 2(A) or 2(B), you **must** indicate the number of **both** full-time and part-time employees, other than yourself, including family members and active partners (if none, you must enter "0").

\_\_\_\_\_ Full-time Employees

\_\_\_\_\_ Part-time Employees

Name of Business		Federal ID (or) Social Security No.	
Address		Telephone (       )	
City	State	ZIP	

*I hereby certify that the above information is true and correct. I agree to notify the Michigan DNR of any changes that occur in factors affecting my coverage during any of my present and future operations.*

\_\_\_\_\_  
Signature of Owner or Authorized Representative

\_\_\_\_\_  
Title

\_\_\_\_\_  
Date

**Please complete the "SEALED BID" information on the next page**

Dinky Mix (45-119-25)

T44N, R07W, SEC. 30; T44N, R07W, SEC. 31; T44N, R08W, SEC. 25; T44N,

In response to the notice of sale to be held 3:00 p.m. (local time) on May 19, 2026, I am hereby submitting my sealed bid ( firm offer) for the following forest products to be cut. Bids for individual species must be at or above the advertised price. All non-responsive bid forms may be rejected.

<u>PRODUCTS &amp; SPECIES</u>	<u>ESTIMATED VOLUME*</u>	<u>ADVERTISED PRICE</u>	<u>BID PRICE/UNIT</u>
<b>Sawtimber</b>			
Sugar Maple	1.8 MBF	\$ 293.00/MBF	\$ _____
<b>Pulpwood</b>			
Balsam Fir	214 Cords	\$ 8.75/Cord	\$ _____
Jack Pine	2 Cords	\$ 24.20/Cord	\$ _____
Mixed Aspen	1,135 Cords	\$ 17.70/Cord	\$ _____
Mixed Hardwood	385 Cords	\$ 16.70/Cord	\$ _____
N. White Cedar	20 Cords	\$ 4.20/Cord	\$ _____
Red Pine	5 Cords	\$ 95.10/Cord	\$ _____
White Pine	4 Cords	\$ 14.25/Cord	\$ _____
White Spruce	49 Cords	\$ 9.70/Cord	\$ _____

\*The volumes are statistically estimated within plus (+) or minus (-) 17.36 percent at 95% confidence level. These estimated volumes are final and not subject to adjustment. Prospective bidders are urged to examine this timber and to make their own estimates of quantity and quality.

I understand that any or all bids may be rejected. All bids must be signed and all bid items must be bid or the bid form may be rejected. I also understand that consideration and awarding a contract will be based upon my past performance and ability to complete the contract based upon equipment and staffing subject to my control.

FEDERAL ID: \_\_\_\_ - \_\_\_\_ - \_\_\_\_ or SOCIAL SECURITY NUMBER: \_\_\_\_ - \_\_\_\_ - \_\_\_\_

Company or individual bidding: \_\_\_\_\_

Company representative's name: \_\_\_\_\_

Address: \_\_\_\_\_

City: \_\_\_\_\_ State: \_\_\_\_\_ Zip: \_\_\_\_\_

IF AVAILABLE, PLEASE PLACE THE PERSONALIZED LABEL FROM YOUR PROSPECTUS IN THE ABOVE BOX.

Individual or company representative's signature: \_\_\_\_\_ Date: \_\_\_\_\_

Phone number : \_\_\_\_\_ Email (optional): \_\_\_\_\_

**THE WINNING BIDDER MUST COMPLETE THE VERIFICATION OF WORKER'S DISABILITY COMPENSATION ACT COMPLIANCE (ON REVERSE SIDE IF DOUBLE SIDED) WITHIN 21 DAYS OF SALE AWARD DATE**



FOR DEPARTMENT USE ONLY	
Sale Number (XX - XXX - XX - XX)	
Forest Management Unit:	

## TIMBER SALE VERIFICATION OF WORKER'S DISABILITY COMPENSATION ACT COMPLIANCE

As required by Act 317, P.A. 1969 (Worker's Compensation) and  
Part 5 of Act 451 of 1994, as amended.

### VERIFICATION OF WORKER'S DISABILITY COMPENSATION ACT COMPLIANCE

- This verification must be completed and submitted within 21 days of contract award and prior to the issuance of the timber sale contract.
- In addition, if boxes 2B or 2C are checked, then Notice of Exclusion or Certificate of Insurance must be submitted within twenty-one (21) days of the contract award and prior to the issuance of the timber sale contract.
- All information must be typed or printed except for written signatures.

Please Check Appropriate Categories:

1. My business is organized as (you **must** check one of the boxes below):
  - A.  Sole Proprietorship (individual)
  - B.  Partnership
  - C.  Corporation
2. You **must** check one of the boxes below:
  - A.  I certify my business is a sole proprietorship and it has no employees but the sole proprietor. I am not subject to the Worker's Compensation Laws.
  - B.  I certify my business has satisfied its obligation to the Worker's Compensation Act through the use of an approved Notice of Exclusion (BWC-337, Rev. 5/96). I will provide a copy of the Notice of Exclusion within 21 days of the contract award. (For questions or a copy of the BWC-337, please call the Worker's Compensation Bureau at 517-322-1195).
  - C.  I certify my business has a Worker's Compensation Policy. I will provide an original Certificate of Insurance within twenty-one (21) days of the contract award.
3. If you have checked item 2(A) or 2(B), you **must** indicate the number of **both** full-time and part-time employees, other than yourself, including family members and active partners (if none, you must enter "0").

\_\_\_\_\_ Full-time Employees

\_\_\_\_\_ Part-time Employees

Name of Business		Federal ID (or) Social Security No.	
Address		Telephone (       )	
City	State	ZIP	

*I hereby certify that the above information is true and correct. I agree to notify the Michigan DNR of any changes that occur in factors affecting my coverage during any of my present and future operations.*

\_\_\_\_\_  
Signature of Owner or Authorized Representative

\_\_\_\_\_  
Title

\_\_\_\_\_  
Date

Please complete the "SEALED BID" information on the next page

Between the Streams Mix (45-104-26)  
T44N, R10W, SEC. 5; T44N, R10W, SEC. 8; T44N, R10W, SEC. 9; Mackinac

In response to the notice of sale to be held 3:00 p.m. (local time) on May 19, 2026, I am hereby submitting my sealed bid ( firm offer) for the following forest products to be cut. Bids for individual species must be at or above the advertised price. All non-responsive bid forms may be rejected.

<u>PRODUCTS &amp; SPECIES</u>	<u>ESTIMATED VOLUME*</u>	<u>ADVERTISED PRICE</u>	<u>BID PRICE/UNIT</u>
<b>Sawtimber</b>			
Black Cherry	1.8 MBF	\$ 76.00/MBF	\$ _____
Red Maple	46.9 MBF	\$ 100.00/MBF	\$ _____
Sugar Maple	32.1 MBF	\$ 293.00/MBF	\$ _____
Yellow Birch	1.9 MBF	\$ 51.00/MBF	\$ _____
<b>Pulpwood</b>			
Balsam Fir	436 Cords	\$ 8.75/Cord	\$ _____
Balsam Poplar	137 Cords	\$ 17.70/Cord	\$ _____
Hemlock	70 Cords	\$ 3.95/Cord	\$ _____
Mixed Hardwood	1,978 Cords	\$ 16.70/Cord	\$ _____
Mixed Spruce	70 Cords	\$ 9.70/Cord	\$ _____
Paper Birch	54 Cords	\$ 5.20/Cord	\$ _____
Quaking Aspen	456 Cords	\$ 17.70/Cord	\$ _____

\*The volumes are statistically estimated within plus (+) or minus (-) 10.11 percent at 95% confidence level. These estimated volumes are final and not subject to adjustment. Prospective bidders are urged to examine this timber and to make their own estimates of quantity and quality.

I understand that any or all bids may be rejected. All bids must be signed and all bid items must be bid or the bid form may be rejected. I also understand that consideration and awarding a contract will be based upon my past performance and ability to complete the contract based upon equipment and staffing subject to my control.

FEDERAL ID: \_\_\_\_\_ or SOCIAL SECURITY NUMBER: \_\_\_\_\_

Company or individual bidding: \_\_\_\_\_

Company representative's name: \_\_\_\_\_

Address: \_\_\_\_\_

City: \_\_\_\_\_ State: \_\_\_\_\_ Zip: \_\_\_\_\_

IF AVAILABLE, PLEASE PLACE THE PERSONALIZED LABEL FROM YOUR PROSPECTUS IN THE ABOVE BOX.

Individual or company representative's signature: \_\_\_\_\_ Date: \_\_\_\_\_

Phone number : \_\_\_\_\_ Email (optional): \_\_\_\_\_

**THE WINNING BIDDER MUST COMPLETE THE VERIFICATION OF WORKER'S DISABILITY COMPENSATION ACT COMPLIANCE (ON REVERSE SIDE IF DOUBLE SIDED) WITHIN 21 DAYS OF SALE AWARD DATE**



<b>FOR DEPARTMENT USE ONLY</b>
Sale Number (XX - XXX - XX - XX)
Forest Management Unit:

## TIMBER SALE VERIFICATION OF WORKER'S DISABILITY COMPENSATION ACT COMPLIANCE

*As required by Act 317, P.A. 1969 (Worker's Compensation) and  
Part 5 of Act 451 of 1994, as amended.*

### VERIFICATION OF WORKER'S DISABILITY COMPENSATION ACT COMPLIANCE

- This verification must be completed and submitted within 21 days of contract award and prior to the issuance of the timber sale contract.
- In addition, if boxes 2B or 2C are checked, then Notice of Exclusion or Certificate of Insurance must be submitted within twenty-one (21) days of the contract award and prior to the issuance of the timber sale contract.
- All information must be typed or printed except for written signatures.

Please Check Appropriate Categories:

1. My business is organized as (you **must** check one of the boxes below):
  - A.  Sole Proprietorship (individual)
  - B.  Partnership
  - C.  Corporation
  
2. You **must** check one of the boxes below:
  - A.  I certify my business is a sole proprietorship and it has no employees but the sole proprietor. I am not subject to the Worker's Compensation Laws.
  - B.  I certify my business has satisfied its obligation to the Worker's Compensation Act through the use of an approved Notice of Exclusion (BWC-337, Rev. 5/96). I will provide a copy of the Notice of Exclusion within 21 days of the contract award. (For questions or a copy of the BWC-337, please call the Worker's Compensation Bureau at 517-322-1195).
  - C.  I certify my business has a Worker's Compensation Policy. I will provide an original Certificate of Insurance within twenty-one (21) days of the contract award.
  
3. If you have checked item 2(A) or 2(B), you **must** indicate the number of **both** full-time and part-time employees, other than yourself, including family members and active partners (if none, you must enter "0").

\_\_\_\_\_ Full-time Employees

\_\_\_\_\_ Part-time Employees

Name of Business		Federal ID (or) Social Security No.	
Address		Telephone (       )	
City	State	ZIP	

*I hereby certify that the above information is true and correct. I agree to notify the Michigan DNR of any changes that occur in factors affecting my coverage during any of my present and future operations.*

\_\_\_\_\_  
Signature of Owner or Authorized Representative

\_\_\_\_\_  
Title

\_\_\_\_\_  
Date

**Please complete the "SEALED BID" information on the next page**