



**DEPARTMENT OF NATURAL RESOURCES  
STATE OF MICHIGAN  
TIMBER SALE PROSPECTUS #7794**

**SCHEDULED SALE DATE AND TIME:** 3:00 p.m. (local time) on February 26, 2026.

**LOCATION:** NEWBERRY MGMT UNIT, 5666 S STATE HWY M 123, NEWBERRY, MI 49868.

**PROSPECTUS NOTE:** The bidder is advised to inspect the sale area and review the location, estimated volumes, operating costs and contract terms of proposed sales. Please be aware that some landowners may request 60 days or more notice for access across their land.

Notice is hereby given that bids will be received by the Unit Manager, NEWBERRY MANAGEMENT UNIT, for certain timber on the following described lands:

Dude Where's My Car? (42-003-25) / T47N, R10W, SEC. 5 , S1/2SW.

T47N, R10W, SEC. 6 , S1/2SE.

T47N, R10W, SEC. 7 , NENE.

Luce County, Advertised Price \$7,368.95, 53.9 Acres, Spruce/Fir/Tamarack, Aspen.

SALE NOTE: No new roads will be permitted.

Permission for access across private land is the responsibility of the Purchaser.

It is recommended, but not required, that within Payment Unit(s) 2-4, harvesting occur during dry summer or frozen winter conditions because of wet soil conditions in parts of the Sale Area .

Spruce Patch (42-007-25) / T47N, R10W, SEC. 18, SWNE,NESW,S1/2SW,W1/2SE.

T47N, R10W, SEC. 19, NWNE.

T47N, R10W, SEC. 7 , SWSW.

Luce County, Advertised Price \$5,933.15, 62.4 Acres, Spruce/Fir/Tamarack, Hardwood.

SALE NOTE: Rod maintenance may be needed. See Sale Spec 4.2.3 for details.

It is recommended, but not required, that within Payment Unit(s) 1, harvesting occur during dry summer or frozen winter conditions because of wet soil conditions.

There is an ORV trail within the sale area and is shown on the Timber Sale Map. See Sale Spec 5.2.39 for restrictions.

A recreation site such as a trail, pathway, or campground is within the sale area or the vicinity. Certain restrictions/specifications may be applicable including time restrictions.

Barnyard Mix (42-011-25) / T46N, R10W, SEC. 12, E1/2NW,W1/2NE,NESW.

Luce County, Advertised Price \$2,400.80, 32.1 Acres, Spruce/Fir/Tamarack, N White Cedar.

SALE NOTE: Permission for access across private land is the responsibility of the Purchaser. Landowner contact information is available from DNR Newberry Field Office.

Within Payment Unit(s) 1, 2 and 3, unless changed by written agreement, harvesting is limited to frozen winter months because of wet ground and private access road is through a summer cattle pasture.

Some roads or skid trails may require extra protection such as that afforded by timber mats , interlocking composite mats, or another approved system. See Sale Spec 5.2.17 for additional information.

Access may be through private land.

## BID INSTRUCTIONS (VER. 10/10/2022):

### 1. Scheduled Bid Location, Date, and Time (2/11)

Bids must be received by the Unit Manager, NEWBERRY OFFICE, 5666 S STATE HWY M 123, NEWBERRY, MI 49868, no later than 3:00 p.m. (local time) on February 26, 2026. For further information concerning this sale, contact Keith Magnusson at 906-291-0120 extension n/a.

### 2. Bidder's Qualifications (10/22)

If all or part of a timber sale was prepared by a private contractor, the contractor and that contractor's company are not permitted to bid on the timber sale. A person must be 18 years of age or older to purchase timber. Permanent employees of the Department of Natural Resources or members of their immediate household may not bid. Former employees, in the permanent or seasonal class, may not bid until 3 months after the last day of active duty. Bids will not be accepted from individuals or companies appearing on the DNR/FRD No-Bid List. This list contains the names of purchasers who previously failed to execute a contract within 21-days or who have a history of poor performance.

### 3. Preparation of Sealed Bids (5/16)

Bid Forms may be completed online thru Michigan DNR Timber Sale Online Bidding (OLB) at [www.michigan.gov/timberbidding](http://www.michigan.gov/timberbidding) or by completing the hardcopy Bid Form found in the Timber Sale Prospectus. Hardcopy Bid Forms shall be manually signed in ink. Registration in OLB is considered your 'signature' for all bids submitted thru that system. Bid prices must be entered for each species and product in the Bid Price column for all material subject to bidding and all fill-in blanks must be completed. If erasures or other changes appear on the hardcopy Bid Form, each erasure or change must be initialed by the person signing the bid.

### 4. Submission of Sealed Bids (5/16)

Bid forms may be obtained from the Unit Manager or thru OLB. Bids may be submitted hardcopy or thru OLB. All hardcopy bids must be submitted on the bid form and in an envelope clearly identified as described in this section. NOTE: Only one bid form per bid envelope. Sealed bids must be submitted to the Unit office designated in the prospectus and must be submitted at or prior to the time established in the prospectus. The envelope should show on the outside (a) the sale name or number and (b) the date and time of bid opening, as shown in the prospectus. Bids received after the time specified in the sale prospectus are late bids and will be rejected.

It is possible for a bidder to submit multiple bids on a single sale. For example, a bid may be submitted hardcopy and a bid may be submitted thru OLB. Or, two bidders from the same company could both submit bids on the same sale. If this were to happen, the State would accept all bids received and award the contract accordingly. All bidding and contractual requirements would apply to all bids received.

### 5. Public Opening of Sealed Bids (7/16)

If conditions permit, the sealed bids will be publicly opened and posted at the time and place set in the prospectus.

If a bidder, present at a bid opening, has submitted bids on more than one sale, that bidder may withdraw their unopened bid envelopes or announce the withdrawal of their online bid after being declared the successful bidder on one sale.

### 6. Award of Contract (1/11)

Award of the contract will be made to the Bidder whose bid, conforming to the prospectus, is most advantageous to the State of Michigan on the basis of total value at rates bid for the estimated quantities. The State reserves the right to reject any bid or waive any minor irregularity in bids received. A written award mailed (or otherwise furnished) to the successful Bidder shall be deemed to result in a binding contract without further action by either party.

### 7. Down Payment (1/11)

The Bidder to whom award is made must make a down payment within 21 days of the sale award. The amount of the down payment will be calculated as shown in the Bond and Payment Schedule of this prospectus. Only cash may be used to meet this requirement.

### 8. Performance Security (1/11)

As guarantee of faithful performance, a cash bond, certificate of deposit, surety bond or irrevocable letter of credit (LOC) is required within 21 days of the sale award. The amount of the performance security is shown in the Bond and

Payment Schedule of this prospectus. If an LOC or surety is used, the coverage must extend for at least 6 months beyond the contract expiration.

#### 9. Worker's Compensation (10/22)

Purchaser shall obtain worker's compensation insurance to cover claims under Michigan's Worker's Disability Compensation Act of 1969 or similar employee benefit act of any other state applicable to an employee. Verification of Worker's Disability Compensation Act Compliance must be completed and submitted within 21 days of contract award and prior to the issuance of the timber sale contract. In addition, if applicable, Notice of Exclusion or Certificate of Insurance must also be submitted.

#### 10. Timber Sale Contract (10/22)

Additional conditions and requirements common to all timber sales are listed on the timber sale contract (R4031) and are available on line at [www.michigan.gov/timber](http://www.michigan.gov/timber). Contact the Unit Manager for additional information or a sample contract. Within 21 days of the date of the award letter, the bidder must sign the contract and provide the required down payment, performance security, and verification of worker's disability compensation. The down payment and performance security shall be in accordance with the provisions of the timber sale contract, in the sums stated in this prospectus. If these actions are not taken, then the Bidder, the Bidder's corporation, and the corporation's principals may not be permitted to bid on State timber sales for a period of 3 months after the first offense, 6 months after the second offense, and 1 year after the third offense. An offense will only be counted against the Bidder for 5 years. In addition, the Bidder certifies that if awarded this contract, the Bidder will complete the timber sale contract in accordance with its terms and any modifications thereof including requirements to purchase, cut, and remove the included timber by the expiration date.

Payment Unit values in the State Forest Timber Sale Contract are calculated based on the advertised value of the Payment Unit as a percentage of the total advertised value of the contract. The advertised value of each Payment Unit is given in the Description of Timber by Payment Unit table on the Timber Sale Information page. For example, if the value of Payment Unit 1 is advertised as \$1,500 and the total Timber Sale value is advertised as \$10,000, the contract price for Payment Unit 1 will be 15% of the total bid price ( $\$1,500/\$10,000 * 100$ ).

#### 11. Disclaimer of Estimates and Bidder's Warranty of Inspection (10/22)

Before submitting this bid, the Bidder is advised and cautioned to inspect the sale area, review the requirements of the sale contract, and take other steps as may be reasonably necessary to ascertain the location, estimated volumes, construction estimates, and operating costs of the proposed sale. Failure to do so will not relieve the Bidder from responsibility for completing the contract.

The Bidder warrants that this bid is submitted solely on the basis of the Bidder's examination and inspection of the quality and quantity of the timber offered for sale and the Bidder's opinion of the value thereof and the costs of recovery. No reliance should be placed on the State of Michigan's estimates of timber quality, quantity or costs of recovery. Bidder further acknowledges that the State of Michigan: (i) expressly disclaims any warranty of fitness of timber for any purpose; (ii) offers this timber as is without any warranty of quality (merchantability) or quantity and (iii) expressly disclaims any warranty as to the quantity or quality of timber sold.

#### 12. Certification and Chain-of-Custody (10/22)

Unless otherwise indicated in the contract under section 7 – Other Conditions of the Sale Specific Conditions & Requirements, the area encompassed by this timber sale is certified to the standards of the Forest Stewardship Council (FSC) - Certificate #SCS-FM/COC-00090N and the Sustainable Forestry Initiative (SFI) - Certificate #NSF-SFIS-5Y031-SF5. Forest products from this sale may be delivered to the mill as "FSC 100% and / or SFI certified" as long as the contractor hauling the forest products is chain-of-custody (COC) certified or covered under a COC certificate from the destination mill. The purchaser is responsible for maintaining COC after leaving the sale area.

#### 13. Good Neighbor Authority (GNA) Requirements (10/22)

If the name of this timber sales contains the acronym GNA, it is authorized by the Good Neighbor Authority (GNA) and covered by various agreements between the U.S. Forest Service and the State. The timber sale occurs on federal land and the following conditions apply:

GNA contracts on US Forest Service land will not be awarded to purchasers on the Federal list of excluded parties. The System for Award Management (SAM) will be checked for active excluded parties prior to award of contract. In

addition, the Bidder to whom award is made must complete an Assurance Regarding Felony Conviction or Tax Delinquent Status for Corporate Applicants (AD-3031).

14. Good Neighbor Authority (GNA) Requirements, con't (10/22)

Bidder certifies, by signing this bid form, that to the best of Bidder's knowledge that the following representations are accurate and complete.

- a. That the Bidder and its principals are not presently debarred, suspended, proposed for debarment, declared ineligible, or voluntary excluded from timber sales (covered transactions) by any Federal department or agency.
- b. That the Bidder and its principals have not within a 3-year period preceding this bid been convicted of or had a civil judgment rendered against them for commission of fraud or a criminal offense in connection with obtaining , attempting to obtain, or performing a public (Federal, State, or local) transaction or contract under a public transaction; violation of Federal or State antitrust statutes or commission of embezzlement, theft, forgery, bribery, falsification or destruction of records, making false statements, or receiving stolen property.
- c. That the Bidder and its principals are not presently indicted for or otherwise criminally or civilly charged by a governmental entity (Federal, State, or local) with commission of any of the offenses enumerated in paragraph b of this certification.
- d. That the Bidder and its principals have not within a 3-year period preceding this bid had one or more public transactions (Federal, State, or local) terminated for breach or default of a timber or forest product contract.

Bidders that cannot certify this requirement, in whole or in part, shall submit an explanation with their bid.

Scott Bowen  
Director



## TIMBER SALE INFORMATION

Dude Where's My Car? (42-003-25)  
T47N, R10W, SEC. 5; T47N, R10W, SEC. 6; T47N, R10W, SEC. 7.  
Luce County (Advertised Price \$7,368.95)

SALE NOTE: No new roads will be permitted.

Permission for access across private land is the responsibility of the Purchaser.

It is recommended, but not required, that within Payment Unit(s) 2-4, harvesting occur during dry summer or frozen winter conditions because of wet soil conditions in parts of the Sale Area.

A timber sale contract for this lump sum, sealed bid timber sale will be awarded to the responsible bidder offering the highest sealed bid price. All units of volume listed below were estimated using the Inventory Manager computer program and the new Michigan taper model. Bids must be at or above the following advertised price for each product and species:

<u>PRODUCTS &amp; SPECIES</u>	<u>ESTIMATED UNITS*</u>	<u>ADVERTISED PRICE</u>
Sawtimber		
Paper Birch	4.1 MBF	\$ 11.00 / MBF
Red Maple	8.3 MBF	\$ 30.00 / MBF
Pulpwood		
Balsam Fir	139 Cords	\$ 4.20 / Cord
Black Spruce	193 Cords	\$ 2.35 / Cord
Hemlock	9 Cords	\$ 3.95 / Cord
Mixed Aspen	378 Cords	\$ 10.05 / Cord
N. White Cedar	111 Cords	\$ 2.40 / Cord
Paper Birch	72 Cords	\$ 1.30 / Cord
Red Maple	180 Cords	\$ 5.95 / Cord
White Pine	35 Cords	\$ 11.45 / Cord
White Spruce	158 Cords	\$ 2.35 / Cord

\* The total volume is statistically estimated within plus (+) or minus (-) 13.94 percent. There are an estimated 1,304 cords on this timber sale, plus or minus 182 cords at the 95% confidence level. The estimated units are final and not subject to adjustment. Prospective bidders are urged to examine this timber and to make their own estimates of quantity and quality.

### **BOND AND PAYMENT SCHEDULE:**

1. A bond in the amount of \$368.00 to insure faithful performance of the conditions of the contract will be deposited by the successful bidder within 21 days of the sale award.
2. Cutting in any sale or unit without the required advance payment would be considered a trespass.
3. Total payment must be paid in advance or according to the following schedule:
  - (a) Ten percent (10%) of the sale value must be paid within 21 days of the sale award.
  - (b) The 10% down payment will be credited towards the first unit cut.
  - (c) Payment for each of the following units must be made before cutting begins in that unit:

<u>PAYMENT UNIT NUMBER</u>	<u>PERCENT OF TOTAL SALE VALUE</u>
01	78.5%
02	8.2%
03	6.1%
04	7.2%

4. If no cutting takes place, the 10% down payment will not be refunded.
5. Operations on the contract issued will terminate on 06/30/2030.

### **SALE STATISTICS**

Volumes were calculated in cubic feet using the Michigan taper model. Cubic foot volume includes all wood inside bark for the product indicated. For display purposes, cubic feet were converted to cords and MBF using a simple conversion factor, e.g. 79 cubic feet per cord and 185 cubic feet per MBF. The cubic foot volumes are precise; the cords and MBF volumes are not. Cubic foot volume cannot be directly converted to cords or boards with precision.

SALE VOLUMES

The total estimated sale volume may not equal the sum of the species/products due to the nature of statistical calculations associated with double sampling methodology.

VOLUME			STATISTICAL RANGE IN CORDS	
TOTAL CUBIC FEET	TOTAL CORDS	PERCENT ERROR	MINIMUM	MAXIMUM
103,022	1,304	13.94%	1,122	1,486

VDU VOLUMES

A VDU is a Volume Determination Unit. Volumes and their associated statistics are calculated at the VDU level and summarized to the sale level. There is often a one to one relationship between a VDU and a Payment Unit, but not always, depending on the cruise design. Refer to the VDU TO PAYMENT UNIT table.

	VOLUME			RANGE IN CORDS	
VDU	TOTAL CUBIC FEET	TOTAL CORDS	PERCENT ERROR	MINIMUM	MAXIMUM
15	67,307	852	17.44%	703	1,001
21	14,369	182	38.42%	112	252
28	8,763	111	63.51%	40	181
30	12,583	159	31.72%	109	210
TOTAL:	103,022	1,304		965	1,644

VDU TO PAYMENT UNIT

When a VDU is associated with more than one Payment Unit (PU), the VDU volumes are assigned to the PU based on acres of the VDU within the PU.

VDU	VDU ACRES	PU	PU ACRES
15	33.8	1	33.8
21	10.5	2	10.5
28	4.4	3	4.4
30	5.2	4	5.2
TOTAL:	53.9		53.9



**DESCRIPTION OF TIMBER BY PAYMENT UNIT (PU)**

PU	MARKET GROUP	PRODUCT	QUANTITY	UNIT	ACRES	ADVERTISE PRICE
1	Paper Birch Red Maple Balsam Fir Black Spruce Mixed Aspen <i>Quaking Aspen</i> N. White Cedar Paper Birch Red Maple White Pine White Spruce	Sawtimber  Pulpwood	3.9 7.7 129 3 351 <i>351</i> 2 51 134 23 132	MBF MBF Cords Cords Cords <i>Cords</i> Cords Cords Cords Cords Cords	33.8	\$5,792.25
2	Balsam Fir Black Spruce Mixed Aspen <i>B. T. Aspen</i> Paper Birch Red Maple White Pine White Spruce	Pulpwood	4 116 6 <i>6</i> 9 21 6 20	Cords Cords Cords <i>Cords</i> Cords Cords Cords Cords	10.5	\$602.05
3	Red Maple Balsam Fir Black Spruce Mixed Aspen <i>B. T. Aspen</i> N. White Cedar Paper Birch Red Maple White Pine	Sawtimber Pulpwood	0.6 1 74 15 <i>15</i> 8 4 1 6	MBF Cords Cords Cords <i>Cords</i> Cords Cords Cords Cords	4.4	\$445.90
4	Paper Birch Balsam Fir Hemlock Mixed Aspen <i>B. T. Aspen</i> N. White Cedar Paper Birch Red Maple White Spruce	Sawtimber Pulpwood	0.2 5 9 6 <i>6</i> 101 8 24 6	MBF Cords Cords Cords <i>Cords</i> Cords Cords Cords Cords	5.2	\$528.75
TOTAL:			12.4	MBF		
TOTAL:			1,275	Cords		

## Sale Specific Conditions & Requirements

**Sale Name: Dude Where's My Car?**

**Sale Number: 42-003-25 Seq#: 1**

### 1 - Sale Area

#### 1.2 - Boundaries

##### 1.2.1 - Painted Boundaries (9/19)

The sale boundary and Payment Unit boundaries are marked and identified by red and yellow paint. Exterior sale boundary lines against state are marked with red paint. Interior Payment Unit boundaries are marked with yellow paint. Designated road areas are marked in orange paint in Payment Unit 4. Retention patches are marked with red paint; no harvesting activities may occur within these areas. The painted boundary line trees are not Included Timber and are to be protected. Yellow painted trees designating an interior Payment Unit boundary are only to be cut when all surrounding Payment Units have been paid.

### 2 - Timber Specifications

#### 2.1 - Included Timber

##### 2.1.2 - Clearcut Unit(s) w/o Unmerchantable Trees (8/11)

Within Payment Unit(s) 1-4, cut all trees which meet minimum piece specifications in 2.2 Utilization. In addition, the following specifications apply:

- Within Payment Unit 1, do not cut white pine over 20 inches in diameter.
- Within Payment Unit 4, cut all trees which meet minimum piece specifications in 2.2 Utilization. Also, cut only the trees necessary for maneuverability between the unit gaps. Gaps are connected with designated skidding areas and a path is painted in orange paint. See Timber Removed for Construction spec 4.1.4

#### 2.2 - Utilization

##### 2.2.9 - No Chipping Permitted (12/08)

Within Payment Unit(s) 2 and 3, all wood must be removed by whole tree, tree segment, or roundwood. No chipping is permitted.

### 3 - Payments

#### 3.3 - Pre-measured Sales

##### 3.3.4 - Dividing Payment Units (7/14)

Payment Unit(s) 1 may be divided at the request of the Purchaser and upon approval of the Unit Manager. Dividing Payment Units is a contract modification which requires a Timber Sale Contract Amendment. There will be only one division in this Payment Unit.

### 4 - Transportation

#### 4.1 - Construction

##### 4.1.4 - Timber Removed for Construction (3/23)

Trees cut or damaged in the process of pre-approved road, landing, or skid trail construction will be decked in an area separate from other Designated Timber and not removed until measured by the Sale Administrator. Payment will be made at contract prices or average prices, if not on the contract.

##### 4.1.12 - No New Roads (1/12)

No new roads will be permitted in any Payment Unit for trucks. All trucking operations are limited to existing roads. Only skid trails and truck turnaround improvements will be allowed.

#### 4.2 - Maintenance

##### 4.2.2 - Fill Material (4/07)

To maintain roads, fill material may be needed in areas where "holes" exist or may be expected to develop. This fill material should be placed before trucking begins. Contact the Sale Administrator regarding the availability of onsite sand or gravel from adjacent State-owned lands. Note that: Areas of consideration are mainly the entrance to County Road 407 or the area north of Payment Unit 2.

#### 4.4 - Access

##### 4.4.1 - Private property access (3/11)

Permission for access across private land is the responsibility of the Purchaser.

### 5 - Operations

#### 5.2 - Conduct of Operations

##### 5.2.1 - Slash

###### 5.2.1.11 - Slash for Reforestation (3/21)

To facilitate reforestation, Payment Unit(s) 2-4 shall be left with slash evenly distributed. Bunched tops within the cutting area shall be broken up and scattered. Stumps shall be cut low to the ground. Processing sites shall not be left with a compacted layer of slash; tops from these sites shall be hauled back into the cut area and scattered.

##### 5.2.2 - Hazard Trees/Snags

###### 5.2.2.1 - Den Trees (10/16)

Obvious hollow and/or den trees shall be protected and left standing unless they are a safety hazard.

##### 5.2.3 - Operating Restrictions

###### 5.2.3.11 - Coppice Regeneration Protection (4/10)

To promote aspen regeneration, timber harvesting in Payment Unit 1 must be completed before significant aspen sprouting occurs in that Payment Unit, so as to minimize damage to the new regeneration. Any post-harvest operations, such as chipping, must be completed before sprouting of regeneration occurs. If it is anticipated that chipping will be delayed, then tops shall be carried to one central location or left unchipped. The Unit Manager or his/her representative may cease such operations if sprouting occurs before the operation is complete.

##### 5.2.4 - Dead and Down Creation

###### 5.2.4.4 - Dead and Down Creation, Grouse (6/18)

To encourage grouse and other wildlife, in Payment Unit(s) 1 & 3, leave drumming logs for grouse habitat. Create these drumming logs using forest product material from within the sale boundaries (where applicable) by placing 9–15-inch DBH unmerchantable woody material 8-10 feet long or greater, flat on the ground next to a tall stump at least 3 feet high. If no unmerchantable products of this size are available, use a log of the same dimensions next to a stump at least 3 feet tall. Placement should be nearby mature aspen. Leave at least 1 drumming log per 5 acres and attempt to locate in portions of the stand with ample aspen prior to harvest.

###### 5.2.4.6 - Dead and Down Creation, Other (9/09)

Create brush piles for hare habitat along the edges of Payment Units 1 & 3. Brush should be stacked in long linear piles a minimum of 50 ft in length using forest products such as stumps and larger unmerchantable woody material (from within the sale boundaries where available), formed into a line as a base. Place tops onto the base along its length to construct a linear pile 6 feet in height. The brush pile should be a jumble of logging slash piled on top of the base. If no unmerchantable products are available for a base, use whole trees 8–16-inch DBH. Place brush pile perpendicular to the edge of the harvested stand, reaching into the adjacent stand at least 20 feet. Within Payment Unit 1, create 1 brush pile along the eastern edge. In Payment Unit 3, create 1 brush pile along the western edge. These details should be discussed with the timber Sale Administrator prior to creating.

##### 5.2.22 - Operating Caution

###### 5.2.22.1 - Operating Caution (6/11)

It is recommended, but not required, that within Payment Unit(s) 2-4, cutting, skidding, and hauling occur during dry summer or frozen winter conditions. The reason for the recommendation is because of wet soil conditions in parts of the Sale Area.

#### 5.2.32 - Decking/Landing Restoration (9/13)

All decking and landing areas must have the surface area restored to a condition equal to or better than before. This is to ensure the proper regeneration of the stand. Wood debris, chips and "cookies" from trimmings must be removed or scattered away from landing and loading areas and may not be windrowed on the edge.

#### 5.2.38 - No Decking Against Live Trees (2/04)

Cut products may not be decked against unmarked or designated leave trees.

### 5.8 - Protection of Endangered Species

#### 5.8.5 - Protection of Raptor Nests (3/13)

All trees with raptor nests will be protected if found during harvesting operations. Notification will be made to the Unit Manager or his/her representative who will notify the Wildlife Biologist so an onsite evaluation and recommendation can be made, if necessary.

## 6 - Safety and Fire Prevention

### 6.2 - Signing

#### 6.2.1 - Road Posting (10/20)

The Purchaser is responsible for posting and maintaining caution signs on County Road 407 prior to beginning operations. The road must be posted at appropriate distances from the Sale Area to warn of logging activity and truck traffic. Signs must be removed when harvest operations are suspended or completed. The Purchaser will provide these signs.

## 7 - Other Conditions

### 7.2 - Extensions

#### 7.2.5 - Weather-Related Extension (1/13)

If weather conditions during the operating period of this contract prevent harvesting, this sale may qualify for a weather-related extension. If approved, the normal extension fee would be waived. To qualify, there must be a documented attempt each year to harvest in the difficult portion of the sale.



**TIMBER SALE MAP**

This information provided by authority of Part 525, 1994 PA 451, as amended.

Sale Number  
**42-003-25**

Date  
**05/19/2025**

Forest Management Unit	County	Mapped By: Anthony Ciaramitaro	Scale	Page	Of
Newberry Mgt Unit	Luce	Cruised By: Newberry Unit Staff	1:8,220	1	1

Township	Range	Section(s) and Subdivision(s)
47N	10W	Sec. 5 S1/2SW; Sec. 6 S1/2SE; Sec. 7 NENE;

**Cover Type**

A = Aspen	J = Jack Pine	O = Oak	U = Upland Brush
B = Paper Birch	K = Rock	P = Lowland Poplar	UM = Upland Mix Forest
C = Cedar	L = Lowland Brush	Q = Mixed Swamp Conifer	V = Bog or Marsh
D = Treed Bog	LM = Lowland Mix Forest	R = Red Pine	W = White Pine
E = Swamp Hardwoods	M = Maple, Beech, Birch	S = Black Spruce	X = Non Stocked
F = Spruce/Fir	MC = Mixed Conifer	T = Tamarack	Y = Sand
G = Grass	MD = Mixed Deciduous	Z = Water	
H = Hemlock	N = Marsh		

**Density**

0 = Non Stocked	5 = Pole Timber Medium
1 = Seedling Sapling Poor	6 = Pole Timber Well
2 = Seedling Sapling Medium	7 = Saw Timber Poor
3 = Seedling Sapling Well	8 = Saw Timber Medium
4 = Pole Timber Poor	9 = Saw Timber Well

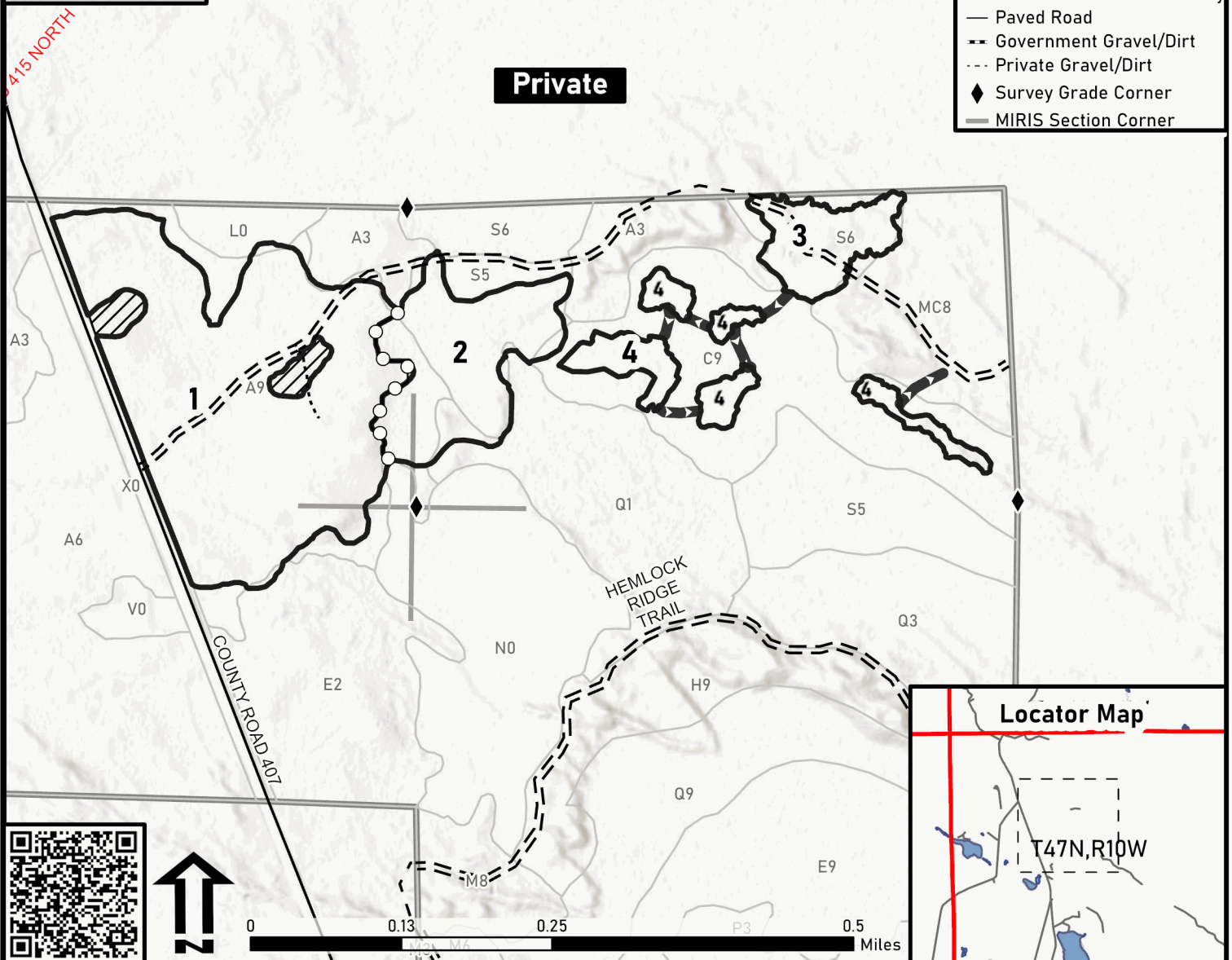
**Dude Where's My Car?**

53.9 Acres

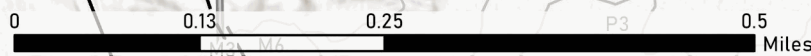
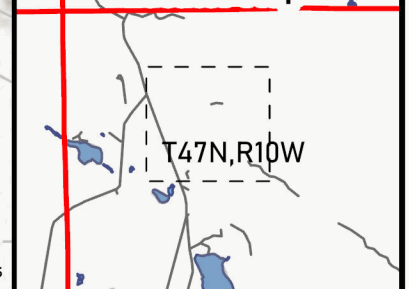
Payment Unit Number	Acres
1	33.8
2	10.5
3	4.4
4	5.2

**Legend**

- Against State (red)
- Payment Unit (yellow)
- Skidding Road (orange)
- Retention Area (red)
- Forest Access Route
- Administrative Access Only
- Paved Road
- Government Gravel/Dirt
- Private Gravel/Dirt
- Survey Grade Corner
- MIRIS Section Corner



**Locator Map**





## TIMBER SALE INFORMATION

### Spruce Patch (42-007-25)

T47N, R10W, SEC. 18; T47N, R10W, SEC. 19; T47N, R10W, SEC. 7.  
Luce County (Advertised Price \$5,933.15)

SALE NOTE: Rod maintenance may be needed. See Sale Spec 4.2.3 for details.

It is recommended, but not required, that within Payment Unit(s) 1, harvesting occur during dry summer or frozen winter conditions because of wet soil conditions.

There is an ORV trail within the sale area and is shown on the Timber Sale Map. See Sale Spec 5.2.39 for restrictions.

A recreation site such as a trail, pathway, or campground is within the sale area or the vicinity. Certain restrictions/specifications may be applicable including time restrictions.

A timber sale contract for this lump sum, sealed bid timber sale will be awarded to the responsible bidder offering the highest sealed bid price. All units of volume listed below were estimated using the Inventory Manager computer program and the new Michigan taper model. Bids must be at or above the following advertised price for each product and species:

<u>PRODUCTS &amp; SPECIES</u>	<u>ESTIMATED UNITS*</u>	<u>ADVERTISED PRICE</u>
Sawtimber		
Red Maple	8.9 MBF	\$ 30.00 / MBF
Pulpwood		
Balsam Fir	69 Cords	\$ 4.20 / Cord
Black Spruce	133 Cords	\$ 2.35 / Cord
Mixed Aspen	143 Cords	\$ 10.05 / Cord
Mixed Hardwood	257 Cords	\$ 5.95 / Cord
Red Pine	1 Cords	\$ 48.30 / Cord
White Pine	94 Cords	\$ 11.45 / Cord
White Spruce	414 Cords	\$ 2.35 / Cord

\* The total volume is statistically estimated within plus (+) or minus (-) 14.47 percent. There are an estimated 1,132 cords on this timber sale, plus or minus 164 cords at the 95% confidence level. The estimated units are final and not subject to adjustment. Prospective bidders are urged to examine this timber and to make their own estimates of quantity and quality.

### **BOND AND PAYMENT SCHEDULE:**

1. A bond in the amount of \$297.00 to insure faithful performance of the conditions of the contract will be deposited by the successful bidder within 21 days of the sale award.
2. Cutting in any sale or unit without the required advance payment would be considered a trespass.
3. Total payment must be paid in advance or according to the following schedule:
  - (a) Ten percent (10%) of the sale value must be paid within 21 days of the sale award.
  - (b) The 10% down payment will be credited towards the first unit cut.
  - (c) Payment for each of the following units must be made before cutting begins in that unit:

<u>PAYMENT UNIT NUMBER</u>	<u>PERCENT OF TOTAL SALE VALUE</u>
01	10.2%
02	11.9%
03	23.4%
04	42.6%
05	11.9%

4. If no cutting takes place, the 10% down payment will not be refunded.
5. Operations on the contract issued will terminate on 12/31/2029.

### **SALE STATISTICS**

Volumes were calculated in cubic feet using the Michigan taper model. Cubic foot volume includes all wood inside bark for the product indicated. For display purposes, cubic feet were converted to cords and MBF using a simple conversion factor, e.g. 79 cubic feet per cord and 185 cubic feet per MBF. The cubic foot volumes are precise; the cords and MBF volumes are not. Cubic foot volume cannot be directly converted to cords or boards with precision.

SALE VOLUMES

The total estimated sale volume may not equal the sum of the species/products due to the nature of statistical calculations associated with double sampling methodology.

VOLUME			STATISTICAL RANGE IN CORDS	
TOTAL CUBIC FEET	TOTAL CORDS	PERCENT ERROR	MINIMUM	MAXIMUM
89,443	1,132	14.47%	968	1,296

VDU VOLUMES

A VDU is a Volume Determination Unit. Volumes and their associated statistics are calculated at the VDU level and summarized to the sale level. There is often a one to one relationship between a VDU and a Payment Unit, but not always, depending on the cruise design. Refer to the VDU TO PAYMENT UNIT table.

	VOLUME			RANGE IN CORDS	
VDU	TOTAL CUBIC FEET	TOTAL CORDS	PERCENT ERROR	MINIMUM	MAXIMUM
3	15,365	194	30.82%	135	254
42	12,956	164	35.16%	106	222
62	26,512	336	29.23%	237	434
66	9,026	114	43.05%	65	163
80	25,584	324	29.83%	227	420
TOTAL:	89,443	1,132		771	1,494

VDU TO PAYMENT UNIT

When a VDU is associated with more than one Payment Unit (PU), the VDU volumes are assigned to the PU based on acres of the VDU within the PU.

VDU	VDU ACRES	PU	PU ACRES
3	12.8	5	12.8
42	6.4	1	6.4
62	18.0	3	18.0
66	6.3	2	6.3
80	19.8	4	19.8
TOTAL:	63.3		63.3



**DESCRIPTION OF TIMBER BY PAYMENT UNIT (PU)**

PU	MARKET GROUP	PRODUCT	QUANTITY	UNIT	ACRES	ADVERTISE PRICE
1	Black Spruce Mixed Hardwood <i>Paper Birch</i> <i>Red Maple</i> White Pine	Pulpwood	131 15 1 14 18	Cords Cords Cords Cords Cords	6.4	\$603.20
2	Red Maple Balsam Fir Black Spruce Mixed Aspen <i>B. T. Aspen</i> <i>Quaking Aspen</i> Mixed Hardwood <i>Red Maple</i> <i>Sugar Maple</i>	Sawtimber Pulpwood	1.3 49 2 25 2 23 35 34 1	MBF Cords Cords Cords Cords Cords Cords Cords Cords	6.3	\$709.00
3	Balsam Fir Mixed Aspen <i>Quaking Aspen</i> Mixed Hardwood <i>Beech</i> <i>Black Cherry</i> <i>Red Maple</i> White Pine White Spruce	Pulpwood	6 55 55 15 3 7 5 12 248	Cords Cords Cords Cords Cords Cords Cords Cords Cords	18.0	\$1,387.40
4	Red Maple Balsam Fir Mixed Aspen <i>B. T. Aspen</i> <i>Quaking Aspen</i> Mixed Hardwood <i>Sugar Maple</i> <i>Black Cherry</i> <i>Red Maple</i> <i>Sugar Maple</i> Red Pine White Pine White Spruce	Sawtimber Pulpwood     <i>Sawtimber</i> <i>Pulpwood</i>	7.6 10 53 2 51 191 0.7 7 182 1 1 46 5	MBF Cords Cords Cords Cords Cords MBF Cords Cords Cords Cords Cords Cords	19.8	\$2,525.85
5	Balsam Fir Mixed Aspen <i>B. T. Aspen</i> Mixed Hardwood <i>Red Maple</i> White Pine White Spruce	Pulpwood	4 10 10 1 1 18 161	Cords Cords Cords Cords Cords Cords Cords	11.9	\$707.70
TOTAL:			8.9	MBF		
TOTAL:			1,111	Cords		

## **Sale Specific Conditions & Requirements**

**Sale Name: Spruce Patch**

**Sale Number: 42-007-25 Seq#: 1**

### **1 - Sale Area**

#### **1.2 - Boundaries**

##### **1.2.1 - Painted Boundaries (9/19)**

The sale boundary and Payment Unit boundaries are marked and identified by red paint. Exterior sale boundary lines against state are marked with red paint. Interior Payment Unit boundaries are marked with a double (2) dots of red paint. Red dotted trees designating an interior Payment Unit boundary are only to be cut when all surrounding Payment Units have been paid.

### **2 - Timber Specifications**

#### **2.1 - Included Timber**

##### **2.1.1 - Clearcut Unit(s) with Unmerchantable Trees (6/14)**

Within Payment Unit(s) 4 & 5, cut all trees that are two (2) inches or more at DBH.

##### **2.1.2 - Clearcut Unit(s) w/o Unmerchantable Trees (8/11)**

Within Payment Unit(s) 1 & 3, cut all trees which meet minimum piece specifications in 2.2 Utilization. Within Unit 3, leave all white pine over 15" DBH and red maple over 10" DBH.

##### **2.1.7 - Leave Tree Marked Unit(s) (6/14)**

Within Payment Unit(s) 2, cut all merchantable balsam, spruce, aspen, cherry & maple trees. Do not cut any trees marked with green paint. In addition, do not cut any white pine.

#### **2.2 - Utilization**

##### **2.2.3 - Stump Heights (12/24)**

Stump heights within Payment Unit(s) 4 & 5 shall not exceed 12 inches for trees greater than 10 inches at DBH and four (4) inches for trees smaller than 10 inches at DBH. This is in order to facilitate planting operations.

### **3 - Payments**

#### **3.3 - Pre-measured Sales**

##### **3.3.4 - Dividing Payment Units (7/14)**

Payment Unit(s) 3 & 4 may be divided at the request of the Purchaser and upon approval of the Unit Manager. Dividing Payment Units is a contract modification which requires a Timber Sale Contract Amendment. There will be only one division per Payment Unit.

### **4 - Transportation**

#### **4.1 - Construction**

##### **4.1.6 - Road Construction (4/24)**

Construction of new roads or improvements of existing roads shall be done in such a way as to minimize the environmental and visual impacts. Merchantable trees shall be cut and utilized unless otherwise directed. Non-merchantable trees shall be severed and laid flat on the ground. Slash shall not left in windrows and be chipped, scattered, utilized or otherwise removed from the sale. Stumps shall be set upright, not left on edge, and be moved at least 10 feet away from the road edge. Disturbed soil shall be feathered into the woods and not left in berms or windrows. Road construction may offer the ability to connect existing roads in the sale area. Contact the unit manager or his/her representative for more information and before constructing new roads.

##### **4.1.7 - Road Closure (10/11)**

All new roads built into the sale may need to be blocked to vehicle traffic upon completion of the sale. Overgrown roads that are reopened shall be considered new roads. In general, this will require constructing double earthen berms at strategic locations. Stumps and brush must be placed along the remainder of the trail. All stumps from road building and landing construction must be reserved to block any newly constructed roads upon completion of the sale. These stumps must be scattered along the road system to prohibit vehicular movement. Contact the Sale Administrator for specific details of design

and placement.

#### 4.2 - Maintenance

##### 4.2.3 - Road maintenance (8/13)

The following road maintenance may be needed: within 60 days of completion of hauling, or if no hauling occurs for 60 days, the road must be maintained and graded. This includes cleaning of drainage areas, grading, crowning and filling with gravel, if necessary. Damages will be assessed if grading/repair does not occur.

### 5 - Operations

#### 5.2 - Conduct of Operations

##### 5.2.1 - Slash

###### 5.2.1.11 - Slash for Reforestation (3/21)

Within the Sale Area or Payment Unit(s) 4 & 5 chipping is encouraged as it is the most effective and efficient way to mitigate slash for reforestation.

##### 5.2.2 - Hazard Trees/Snags

###### 5.2.2.1 - Den Trees (10/16)

Obvious hollow and/or den trees shall be protected and left standing unless they are a safety hazard.

##### 5.2.22 - Operating Caution

###### 5.2.22.1 - Operating Caution (6/11)

It is recommended, but not required, that within Payment Unit(s) 1, cutting and skidding occur during dry summer or frozen winter conditions. The reason for the recommendation is because of wet soil conditions.

##### 5.2.32 - Decking/Landing Restoration (9/13)

All decking and landing areas must have the surface area restored to a condition equal to or better than before. This is to ensure the proper regeneration of the stand. Wood debris, chips and "cookies" from trimmings must be removed or scattered away from landing and loading areas and may not be windrowed on the edge. Additionally, any landing in Unit 2 must be kept off of private property located to the north east. Care must be taken to avoid damage to the road here as well.

##### 5.2.38 - No Decking Against Live Trees (2/04)

Cut products may not be decked against unmarked or designated leave trees.

##### 5.2.39 - ORV Trail/Route Protection (4/18)

There is an ORV trail within the sale area and is shown on the Timber Sale Map. Do not damage ORV trail markers. All stumps within five (5) feet of the trail must be cut flush with the ground. Maintain a 20-foot-wide slash, debris, and rut free zone daily using the ORV trail or route as the centerline. Do not run equipment down the ORV trail or route.

#### 5.8 - Protection of Endangered Species

##### 5.8.5 - Protection of Raptor Nests (3/13)

All trees with raptor nests will be protected if found during harvesting operations. Notification will be made to the Unit Manager or his/her representative who will notify the Wildlife Biologist so an onsite evaluation and recommendation can be made, if necessary.

### 6 - Safety and Fire Prevention

#### 6.2 - Signing

##### 6.2.1 - Road Posting (10/20)

The Purchaser is responsible for posting and maintaining caution signs on County Roads 407 & 422 prior to beginning operations. The road must be posted at appropriate distances from the sale area to warn of logging activity and truck traffic. Signs must be removed when harvest operations are suspended or completed. The Purchaser will provide these signs.

##### 6.2.2 - Snowmobile Trail Posting (10/20)

The Purchaser is responsible for posting and maintaining caution signs on County Road 415 prior to beginning operations

during the snowmobile season (approximately December 1 to March 31). The trail must be posted at appropriate distances from the sale area to warn of logging activity and truck traffic. Signs must be removed when harvest operations are suspended or completed. The DNR will provide these signs.

#### 6.2.3 - Recreational Trail Posting (10/20)

The Purchaser is responsible for posting and maintaining caution signs on the ORV trail prior to beginning operations. The trail must be posted at appropriate distances from the sale area to warn of logging activity and truck traffic at both ends of the trail. Signs must be removed when harvest operations are suspended or completed. The DNR will provide these signs.

### **7 - Other Conditions**

#### 7.3 - Contract Modifications

##### 7.3.3 - Modification for Reforestation (8/05)

When contractual work of Purchaser has been accepted for any Payment Unit identified on Sale Area Map, Payment Unit will be eliminated from the Sale Area on written notice so that reforestation operations can begin.



**TIMBER SALE MAP**

This information provided by authority of Part 525, 1994 PA 451, as amended.

Sale Number  
**42-007-25**

Date  
**07/17/2025**

Forest Management Unit	County	Mapped By: Payment	Scale	Page	Of
Newberry Mgt Unit	Luce	Cruised By: DNR Staff	1:15,840	1	1

Township	Range	Section(s) and Subdivision(s)
47N	10W	Sec. 18 SWNE, NESW, S1/2SW, W1/2SE; Sec. 19 NWNE; Sec. 7 SWSW;

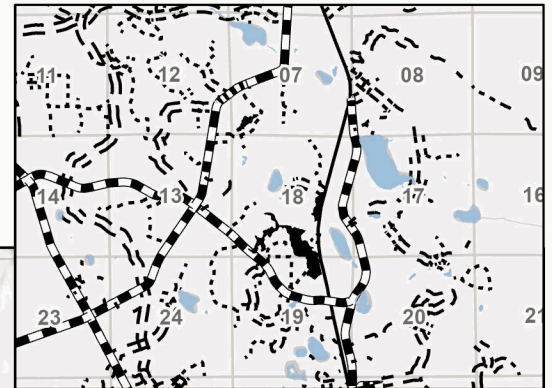
**Cover Type**

A = Aspen	J = Jack Pine	O = Oak	U = Upland Brush
B = Paper Birch	K = Rock	P = Lowland Poplar	UM = Upland Mix Forest
C = Cedar	L = Lowland Brush	Q = Mixed Swamp Conifer	V = Bog or Marsh
D = Treed Bog	LM = Lowland Mix Forest	R = Red Pine	W = White Pine
E = Swamp Hardwoods	M = Maple, Beech, Birch	S = Black Spruce	X = Non Stocked
F = Spruce/Fir	MC = Mixed Conifer	T = Tamarack	Y = Sand
G = Grass	MD = Mixed Deciduous	Z = Water	
H = Hemlock	N = Marsh		

**Density**

0 = Non Stocked	5 = Pole Timber Medium
1 = Seedling Sapling Poor	6 = Pole Timber Well
2 = Seedling Sapling Medium	7 = Saw Timber Poor
3 = Seedling Sapling Well	8 = Saw Timber Medium
4 = Pole Timber Poor	9 = Saw Timber Well

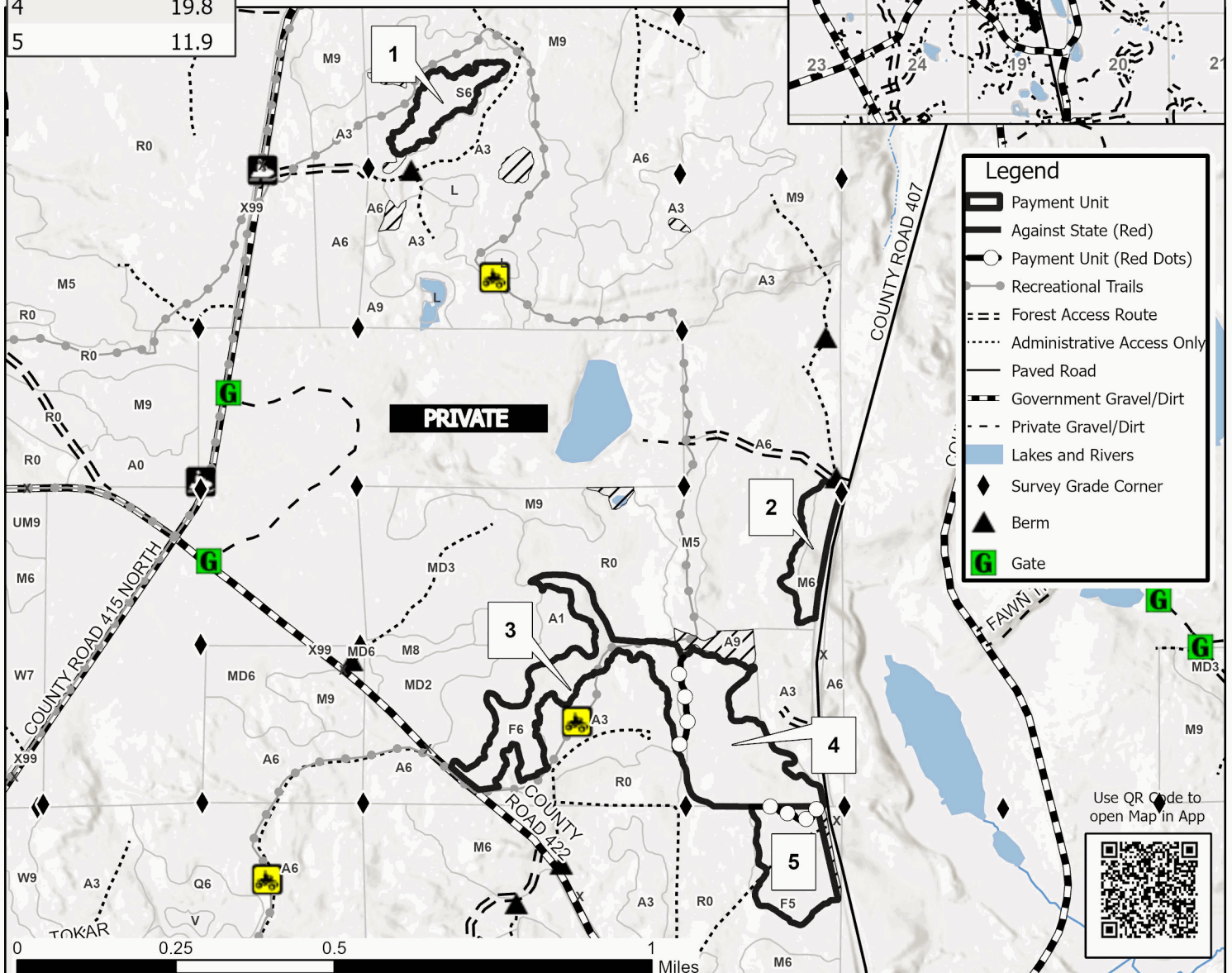
**Locator Map 1:100,000**



Payment Unit Number	Acres
1	6.4
2	6.3
3	18
4	19.8
5	11.9



**Spruce Patch**  
**62.4 Acres**



**Legend**

- Payment Unit
- Against State (Red)
- Payment Unit (Red Dots)
- Recreational Trails
- Forest Access Route
- Administrative Access Only
- Paved Road
- Government Gravel/Dirt
- Private Gravel/Dirt
- Lakes and Rivers
- Survey Grade Corner
- Berm
- Gate

Use QR Code to  
open Map in App





## TIMBER SALE INFORMATION

Barnyard Mix (42-011-25)

T46N, R10W, SEC. 12.

Luce County (Advertised Price \$2,400.80)

SALE NOTE: Permission for access across private land is the responsibility of the Purchaser. Landowner contact information is available from DNR Newberry Field Office.

Within Payment Unit(s) 1, 2 and 3, unless changed by written agreement, harvesting is limited to frozen winter months because of wet ground and private access road is through a summer cattle pasture.

Some roads or skid trails may require extra protection such as that afforded by timber mats, interlocking composite mats, or another approved system. See Sale Spec 5.2.17 for additional information.

Access may be through private land.

A timber sale contract for this lump sum, sealed bid timber sale will be awarded to the responsible bidder offering the highest sealed bid price. All units of volume listed below were estimated using the Inventory Manager computer program and the new Michigan taper model. Bids must be at or above the following advertised price for each product and species:

<u>PRODUCTS &amp; SPECIES</u>	<u>ESTIMATED UNITS*</u>		<u>ADVERTISED PRICE</u>
Sawtimber			
Paper Birch	4.6	MBF	\$ 11.00 / MBF
Pulpwood			
Balsam Fir	47	Cords	\$ 4.20 / Cord
Black Cherry	2	Cords	\$ 5.95 / Cord
Black Spruce	162	Cords	\$ 2.35 / Cord
Mixed Aspen	79	Cords	\$ 10.05 / Cord
N. White Cedar	166	Cords	\$ 2.40 / Cord
Paper Birch	106	Cords	\$ 1.30 / Cord
Red Maple	38	Cords	\$ 5.95 / Cord
Tamarack	24	Cords	\$ 3.25 / Cord
White Pine	11	Cords	\$ 11.45 / Cord

\* The total volume is statistically estimated within plus (+) or minus (-) 26.18 percent. There are an estimated 647 cords on this timber sale, plus or minus 170 cords at the 95% confidence level. The estimated units are final and not subject to adjustment. Prospective bidders are urged to examine this timber and to make their own estimates of quantity and quality.

### **BOND AND PAYMENT SCHEDULE:**

1. A bond in the amount of \$120.00 to insure faithful performance of the conditions of the contract will be deposited by the successful bidder within 21 days of the sale award.
2. Cutting in any sale or unit without the required advance payment would be considered a trespass.
3. Total payment must be paid in advance or according to the following schedule:
  - (a) Ten percent (10%) of the sale value must be paid within 21 days of the sale award.
  - (b) The 10% down payment will be credited towards the first unit cut.
  - (c) Payment for each of the following units must be made before cutting begins in that unit:

<u>PAYMENT UNIT NUMBER</u>	<u>PERCENT OF TOTAL SALE VALUE</u>
01	36.9%
02	47.0%
03	16.1%

4. If no cutting takes place, the 10% down payment will not be refunded.
5. Operations on the contract issued will terminate on 06/30/2030.

### **SALE STATISTICS**

Volumes were calculated in cubic feet using the Michigan taper model. Cubic foot volume includes all wood inside bark for the product indicated. For display purposes, cubic feet were converted to cords and MBF using a simple conversion factor, e.g. 79 cubic feet per cord and 185 cubic feet per MBF. The cubic foot volumes are precise; the cords and MBF volumes are not. Cubic foot volume cannot be directly converted to cords or boards with precision.

SALE VOLUMES

The total estimated sale volume may not equal the sum of the species/products due to the nature of statistical calculations associated with double sampling methodology.

VOLUME			STATISTICAL RANGE IN CORDS	
TOTAL CUBIC FEET	TOTAL CORDS	PERCENT ERROR	MINIMUM	MAXIMUM
51,137	647	26.18%	478	817

VDU VOLUMES

A VDU is a Volume Determination Unit. Volumes and their associated statistics are calculated at the VDU level and summarized to the sale level. There is often a one to one relationship between a VDU and a Payment Unit, but not always, depending on the cruise design. Refer to the VDU TO PAYMENT UNIT table.

	VOLUME			RANGE IN CORDS	
VDU	TOTAL CUBIC FEET	TOTAL CORDS	PERCENT ERROR	MINIMUM	MAXIMUM
49	41,783	529	30.08%	370	688
53	9,354	118	54.10%	54	182
TOTAL:	51,137	647		424	870

VDU TO PAYMENT UNIT

When a VDU is associated with more than one Payment Unit (PU), the VDU volumes are assigned to the PU based on acres of the VDU within the PU.

VDU	VDU ACRES	PU	PU ACRES
49	25.7	1	11.2
		2	14.5
53	6.4	3	6.4
TOTAL:	32.1		32.1



**DESCRIPTION OF TIMBER BY PAYMENT UNIT (PU)**

PU	MARKET GROUP	PRODUCT	QUANTITY	UNIT	ACRES	ADVERTISE PRICE
1	Paper Birch	Sawtimber	2.0	MBF	11.2	\$885.10
	Balsam Fir	Pulpwood	20	Cords		
	Black Cherry		1	Cords		
	Black Spruce		29	Cords		
	Mixed Aspen		35	Cords		
	Balsam Poplar		3	Cords		
	Quaking Aspen		32	Cords		
	N. White Cedar		72	Cords		
	Paper Birch		46	Cords		
	Red Maple		17	Cords		
	Tamarack		6	Cords		
2	Paper Birch	Sawtimber	2.6	MBF	14.5	\$1,128.40
	Balsam Fir	Pulpwood	27	Cords		
	Black Cherry		1	Cords		
	Black Spruce		37	Cords		
	Mixed Aspen		44	Cords		
	Balsam Poplar		3	Cords		
	Quaking Aspen		41	Cords		
	N. White Cedar		94	Cords		
	Paper Birch		60	Cords		
	Red Maple		21	Cords		
	Tamarack		7	Cords		
3	Black Spruce	Pulpwood	96	Cords	6.4	\$387.30
	Tamarack		11	Cords		
	White Pine		11	Cords		
TOTAL:			4.6	MBF		
TOTAL:			635	Cords		

## **Sale Specific Conditions & Requirements**

**Sale Name: Barnyard Mix**

**Sale Number: 42-011-25 Seq#: 1**

### **1 - Sale Area**

#### **1.2 - Boundaries**

##### **1.2.1 - Painted Boundaries (9/19)**

The sale boundary and Payment Unit boundaries are marked and identified by red and yellow paint. Exterior sale boundary lines against state are marked with red paint. Interior Payment Unit boundaries are marked with yellow paint. Yellow painted trees designating an interior Payment Unit boundary are only to be cut when all surrounding Payment Units have been paid.

### **2 - Timber Specifications**

#### **2.1 - Included Timber**

##### **2.1.2 - Clearcut Unit(s) w/o Unmerchantable Trees (8/11)**

Within Payment Unit(s) 1, 2 & 3, cut all trees which meet minimum piece specifications in 2.2 Utilization; except White Pine greater than 16" DBH in Payment Unit 3. Payment Unit 3 is an optional unit to harvest and can be removed from the sale via an amendment.

#### **2.2 - Utilization**

##### **2.2.9 - No Chipping Permitted (12/08)**

Within Payment Unit(s) 1,2 & 3, all wood must be removed by whole tree, tree segment, or roundwood. No chipping is permitted.

### **4 - Transportation**

#### **4.1 - Construction**

##### **4.1.4 - Timber Removed for Construction (3/23)**

Trees cut or damaged in the process of pre-approved road, landing, or skid trail construction will be decked in an area separate from other Designated Timber and not removed until measured by the Sale Administrator. Payment will be made at contract prices or average prices, if not on the contract.

##### **4.1.6 - Road Construction (4/24)**

Construction of new roads or improvements of existing roads shall be done in such a way as to minimize the environmental and visual impacts. Merchantable trees shall be cut and utilized unless otherwise directed. Non-merchantable trees shall be severed and laid flat on the ground. Slash shall be scattered, not left in windrows, and kept a minimum of 10 feet back from the road edge. Stumps shall be set upright, not left on edge, and be moved at least 10 feet away from the road edge. Disturbed soil shall be feathered into the woods and not left in berms or windrows.

#### **4.4 - Access**

##### **4.4.1 - Private property access (3/11)**

Permission for access across private land is the responsibility of the Purchaser. Landowner contact information is available from DNR Newberry Field Office.

### **5 - Operations**

#### **5.1 - Notification**

##### **5.1.1 - Pre-sale Conference (10/16)**

A pre-sale conference between the Purchaser and Sale Administrator is required prior to beginning any operations to determine landing, temp road locations and private land issues.

#### **5.2 - Conduct of Operations**

##### **5.2.2 - Hazard Trees/Snags**

#### 5.2.2.1 - Den Trees (10/16)

Obvious hollow and/or den trees shall be protected and left standing unless they are a safety hazard.

### 5.2.3 - Operating Restrictions

#### 5.2.3.1 - Operating Restrictions (9/11)

Within Payment Unit(s) 1, 2 & 3, unless changed by written agreement, cutting, skidding, and hauling are limited to frozen winter months December, January, February and March. This restriction is because of wet ground and private access road is through a summer cattle pasture.

#### 5.2.17 - Timber Mats and Interlocking Composite Mats (5/23)

Some roads or skid trails may require extra protection such as that afforded by timber mats, interlocking composite mats, or another approved system. A Timber Sale Contract Amendment will be used to document the Purchaser's use of the DNR's mats. Contact the Sale Administrator regarding availability and pick-up. Timber mats are available from various field offices. Composite mats are only available from the Grayling field office and the Marquette ICC. The Purchaser is responsible for picking up and hauling the mats to and from the site. The composite mats will require DNR staff onsite for installation and removal. Contact the Sale Administrator to schedule at least 30 days before desired install/removal date. All mats must be cleaned prior to drop off. This may include, but is not limited to, power washing and brushing to remove mud and debris. A charge of \$700.00 per timber mat and \$2,000.00 per composite mat will be assessed for all damaged or non-returned mats. Damage for the crane/timber mats is defined as three or more broken cants. Damage for the composite mats is defined as cracked or broken mats.

### 5.3 - Stream Protection

#### 5.3.2 - Parking Equipment Near Water (10/23)

Within Payment Unit(s) 1, 2 & 3, the parking of or storage of equipment is prohibited within 100 feet of water bodies or ground water supplies. All equipment, when not in use for harvest operations, must be parked a minimum of 100 feet away from water sources (streams, rivers, lakes, ponds, vernal pools, ground water sources) and 50 feet away from slopes leading to water sources and/or riparian areas. This restriction is for preventing unforeseen oil and/or fluid leaks from contaminating water bodies and/or ground water supplies.

### 5.4 - Soil Protection

#### 5.4.5 - Soil Caution (11/04)

Care must be taken to minimize soil damage due to low ground in the area.

### 5.8 - Protection of Endangered Species

#### 5.8.5 - Protection of Raptor Nests (3/13)

All trees with raptor nests will be protected if found during harvesting operations. Notification will be made to the Unit Manager or his/her representative who will notify the Wildlife Biologist so an onsite evaluation and recommendation can be made, if necessary.

## 7 - Other Conditions

### 7.2 - Extensions

#### 7.2.5 - Weather-Related Extension (1/13)

If weather conditions during the operating period of this contract prevent harvesting, this sale may qualify for a weather-related extension. If approved, the normal extension fee would be waived. To qualify, there must be a documented attempt each year to harvest in the difficult portion of the sale.



**TIMBER SALE MAP**

This information provided by authority of Part 525, 1994 PA 451, as amended.

Sale Number  
**42-011-25**

Date  
**04/25/2025**

Forest Management Unit		County	Mapped By: Nick Wheeler	Scale	Page	Of
Newberry Mgt Unit		Luce	Cruised By: Newberry Staff	1:7,920	1	1
Township	Range	Section(s) and Subdivision(s)				
46N	10W	Sec. 12 E1/2NW,W1/2NE,NESW;				

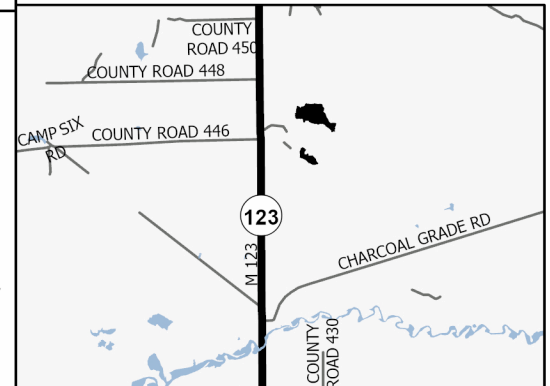
**Cover Type**

A = Aspen	J = Jack Pine	O = Oak	U = Upland Brush
B = Paper Birch	K = Rock	P = Lowland Poplar	UM = Upland Mix Forest
C = Cedar	L = Lowland Brush	Q = Mixed Swamp Conifer	V = Bog or Marsh
D = Treed Bog	LM = Lowland Mix Forest	R = Red Pine	W = White Pine
E = Swamp Hardwoods	M = Maple, Beech, Birch	S = Black Spruce	X = Non Stocked
F = Spruce/Fir	MC = Mixed Conifer	T = Tamarack	Y = Sand
G = Grass	MD = Mixed Deciduous		Z = Water
H = Hemlock	N = Marsh		

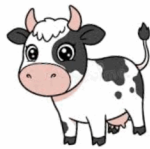
**Density**

0 = Non Stocked	5 = Pole Timber Medium
1 = Seedling Sapling Poor	6 = Pole Timber Well
2 = Seedling Sapling Medium	7 = Saw Timber Poor
3 = Seedling Sapling Well	8 = Saw Timber Medium
4 = Pole Timber Poor	9 = Saw Timber Well

**Locator Map 1:100,000**



Payment Unit Number	Acres
1	11.2
2	14.5
3	6.4

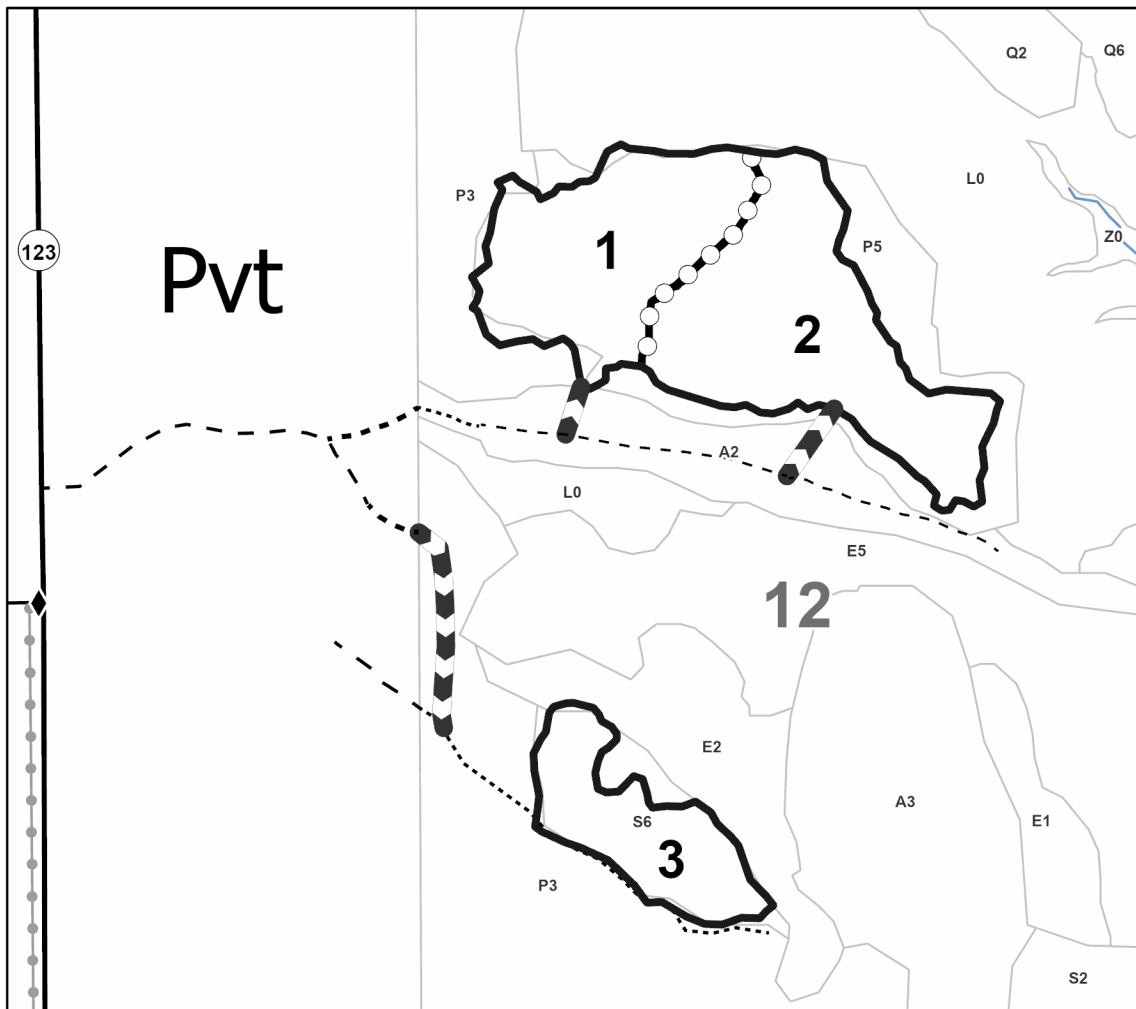


**Barnyard Mix**

**32.1 Acres**



0 0.13 0.25 0.5 Miles



**Legend**

- Payment Unit
- Against State (Red)
- Payment Unit (Yellow)
- Administrative Access Only
- Paved Road
- Private Gravel/Dirt
- Perennial River
- Survey Grade Corner
- Proposed Road



Dude Where's My Car? (42-003-25)

T47N, R10W, SEC. 5; T47N, R10W, SEC. 6; T47N, R10W, SEC. 7; Luce COUNTY

In response to the notice of sale to be held 3:00 p.m. (local time) on February 26, 2026, I am hereby submitting my sealed bid (firm offer) for the following forest products to be cut. Bids for individual species must be at or above the advertised price. All non-responsive bid forms may be rejected.

<u>PRODUCTS &amp; SPECIES</u>	<u>ESTIMATED VOLUME*</u>	<u>ADVERTISED PRICE</u>	<u>BID PRICE/UNIT</u>
Sawtimber			
Paper Birch	4.1 MBF	\$ 11.00/MBF	\$ _____
Red Maple	8.3 MBF	\$ 30.00/MBF	\$ _____
Pulpwood			
Balsam Fir	139 Cords	\$ 4.20/Cord	\$ _____
Black Spruce	193 Cords	\$ 2.35/Cord	\$ _____
Hemlock	9 Cords	\$ 3.95/Cord	\$ _____
Mixed Aspen	378 Cords	\$ 10.05/Cord	\$ _____
N. White Cedar	111 Cords	\$ 2.40/Cord	\$ _____
Paper Birch	72 Cords	\$ 1.30/Cord	\$ _____
Red Maple	180 Cords	\$ 5.95/Cord	\$ _____
White Pine	35 Cords	\$ 11.45/Cord	\$ _____
White Spruce	158 Cords	\$ 2.35/Cord	\$ _____

\*The volumes are statistically estimated within plus (+) or minus (-) 13.94 percent at 95% confidence level. These estimated volumes are final and not subject to adjustment. Prospective bidders are urged to examine this timber and to make their own estimates of quantity and quality.

I understand that any or all bids may be rejected. All bids must be signed and all bid items must be bid or the bid form may be rejected. I also understand that consideration and awarding a contract will be based upon my past performance and ability to complete the contract based upon equipment and staffing subject to my control.

FEDERAL ID: \_\_\_\_\_ or SOCIAL SECURITY NUMBER: \_\_\_\_\_  
Company or individual bidding: \_\_\_\_\_  
Company representative's name: \_\_\_\_\_  
Address: \_\_\_\_\_  
City: \_\_\_\_\_ State: \_\_\_\_\_ Zip: \_\_\_\_\_

IF AVAILABLE, PLEASE PLACE THE PERSONALIZED LABEL FROM YOUR PROSPECTUS IN THE ABOVE BOX.

Individual or company representative's signature: \_\_\_\_\_ Date: \_\_\_\_\_

Phone number : \_\_\_\_\_ Email (optional): \_\_\_\_\_

**THE WINNING BIDDER MUST COMPLETE THE VERIFICATION OF WORKER'S DISABILITY COMPENSATION ACT  
COMPLIANCE (ON REVERSE SIDE IF DOUBLE SIDED) WITHIN 21 DAYS OF SALE AWARD DATE**



**TIMBER SALE**  
**VERIFICATION OF WORKER'S DISABILITY**  
**COMPENSATION ACT COMPLIANCE**

*As required by Act 317, P.A. 1969 (Worker's Compensation) and  
Part 5 of Act 451 of 1994, as amended.*

**FOR DEPARTMENT USE ONLY**

Sale Number (XX – XXX – XX – XX)

Forest Management Unit:

**VERIFICATION OF WORKER'S DISABILITY COMPENSATION ACT COMPLIANCE**

- This verification must be completed and submitted within 21 days of contract award and prior to the issuance of the timber sale contract.
- In addition, if boxes 2B or 2C are checked, then Notice of Exclusion or Certificate of Insurance must be submitted within twenty-one (21) days of the contract award and prior to the issuance of the timber sale contract.
- All Information must be typed or printed except for written signatures.

Please Check Appropriate Categories:

1. My business is organized as (you **must** check one of the boxes below):
  - A. ☐ Sole Proprietorship (individual)
  - B. ☐ Partnership
  - C. ☐ Corporation
2. You **must** check one of the boxes below:
  - A. ☐ I certify my business is a sole proprietorship and it has no employees but the sole proprietor. I am not subject to the Worker's Compensation Laws.
  - B. ☐ I certify my business has satisfied its obligation to the Worker's Compensation Act through the use of an approved Notice of Exclusion (BWC-337, Rev. 5/96). I will provide a copy of the Notice of Exclusion within 21 days of the contract award. (For questions or a copy of the BWC-337, please call the Worker's Compensation Bureau at 517-322-1195).
  - C. ☐ I certify my business has a Worker's Compensation Policy. I will provide an original Certificate of Insurance within twenty-one (21) days of the contract award.
3. If you have checked item 2(A) or 2(B), you **must** indicate the number of **both** full-time and part-time employees, other than yourself, including family members and active partners (if none, you must enter "0").

\_\_\_\_\_ Full-time Employees

\_\_\_\_\_ Part-time Employees

Name of Business		Federal ID (or) Social Security No.
Address		Telephone (       )
City	State	ZIP

*I hereby certify that the above information is true and correct. I agree to notify the Michigan DNR of any changes that occur in factors affecting my coverage during any of my present and future operations.*

\_\_\_\_\_  
Signature of Owner or Authorized Representative

\_\_\_\_\_  
Title

\_\_\_\_\_  
Date

**Please complete the "SEALED BID" information on the next page**

Spruce Patch (42-007-25)

T47N, R10W, SEC. 18; T47N, R10W, SEC. 19; T47N, R10W, SEC. 7; Luce

In response to the notice of sale to be held 3:00 p.m. (local time) on February 26, 2026, I am hereby submitting my sealed bid (firm offer) for the following forest products to be cut. Bids for individual species must be at or above the advertised price. All non-responsive bid forms may be rejected.

<u>PRODUCTS &amp; SPECIES</u>	<u>ESTIMATED VOLUME*</u>	<u>ADVERTISED PRICE</u>	<u>BID PRICE/UNIT</u>
Sawtimber			
Red Maple	8.9 MBF	\$ 30.00/MBF	\$ _____
Pulpwood			
Balsam Fir	69 Cords	\$ 4.20/Cord	\$ _____
Black Spruce	133 Cords	\$ 2.35/Cord	\$ _____
Mixed Aspen	143 Cords	\$ 10.05/Cord	\$ _____
Mixed Hardwood	257 Cords	\$ 5.95/Cord	\$ _____
Red Pine	1 Cords	\$ 48.30/Cord	\$ _____
White Pine	94 Cords	\$ 11.45/Cord	\$ _____
White Spruce	414 Cords	\$ 2.35/Cord	\$ _____

\*The volumes are statistically estimated within plus (+) or minus (-) 14.47 percent at 95% confidence level. These estimated volumes are final and not subject to adjustment. Prospective bidders are urged to examine this timber and to make their own estimates of quantity and quality.

I understand that any or all bids may be rejected. All bids must be signed and all bid items must be bid or the bid form may be rejected. I also understand that consideration and awarding a contract will be based upon my past performance and ability to complete the contract based upon equipment and staffing subject to my control.

FEDERAL ID: \_\_\_\_ - \_\_\_\_ - \_\_\_\_ or SOCIAL SECURITY NUMBER: \_\_\_\_ - \_\_\_\_ - \_\_\_\_  
Company or individual bidding: \_\_\_\_\_  
Company representative's name: \_\_\_\_\_  
Address: \_\_\_\_\_  
City: \_\_\_\_\_ State: \_\_\_\_\_ Zip: \_\_\_\_\_

IF AVAILABLE, PLEASE PLACE THE PERSONALIZED LABEL FROM YOUR PROSPECTUS IN THE ABOVE BOX.

Individual or company representative's signature: \_\_\_\_\_ Date: \_\_\_\_\_

Phone number : \_\_\_\_\_ Email (optional): \_\_\_\_\_

**THE WINNING BIDDER MUST COMPLETE THE VERIFICATION OF WORKER'S DISABILITY COMPENSATION ACT  
COMPLIANCE (ON REVERSE SIDE IF DOUBLE SIDED) WITHIN 21 DAYS OF SALE AWARD DATE**



## TIMBER SALE VERIFICATION OF WORKER'S DISABILITY COMPENSATION ACT COMPLIANCE

As required by Act 317, P.A. 1969 (Worker's Compensation) and  
Part 5 of Act 451 of 1994, as amended.

### FOR DEPARTMENT USE ONLY

Sale Number (XX - XXX - XX - XX)

Forest Management Unit:

### VERIFICATION OF WORKER'S DISABILITY COMPENSATION ACT COMPLIANCE

- This verification must be completed and submitted within 21 days of contract award and prior to the issuance of the timber sale contract.
- In addition, if boxes 2B or 2C are checked, then Notice of Exclusion or Certificate of Insurance must be submitted within twenty-one (21) days of the contract award and prior to the issuance of the timber sale contract.
- All information must be typed or printed except for written signatures.

Please Check Appropriate Categories:

1. My business is organized as (you **must** check one of the boxes below):
  - A. ☐ Sole Proprietorship (individual)
  - B. ☐ Partnership
  - C. ☐ Corporation
2. You **must** check one of the boxes below:
  - A. ☐ I certify my business is a sole proprietorship and it has no employees but the sole proprietor. I am not subject to the Worker's Compensation Laws.
  - B. ☐ I certify my business has satisfied its obligation to the Worker's Compensation Act through the use of an approved Notice of Exclusion (BWC-337, Rev. 5/96). I will provide a copy of the Notice of Exclusion within 21 days of the contract award. (For questions or a copy of the BWC-337, please call the Worker's Compensation Bureau at 517-322-1195).
  - C. ☐ I certify my business has a Worker's Compensation Policy. I will provide an original Certificate of Insurance within twenty-one (21) days of the contract award.
3. If you have checked item 2(A) or 2(B), you **must** indicate the number of **both** full-time and part-time employees, other than yourself, including family members and active partners (if none, you must enter "0").

\_\_\_\_\_ Full-time Employees

\_\_\_\_\_ Part-time Employees

Name of Business		Federal ID (or) Social Security No.
Address		Telephone (       )
City	State	ZIP

*I hereby certify that the above information is true and correct. I agree to notify the Michigan DNR of any changes that occur in factors affecting my coverage during any of my present and future operations.*

\_\_\_\_\_  
Signature of Owner or Authorized Representative

\_\_\_\_\_  
Title

\_\_\_\_\_  
Date

Please complete the "SEALED BID" information on the next page



Barnyard Mix (42-011-25)  
T46N, R10W, SEC. 12; Luce COUNTY

In response to the notice of sale to be held 3:00 p.m. (local time) on February 26, 2026, I am hereby submitting my sealed bid (firm offer) for the following forest products to be cut. Bids for individual species must be at or above the advertised price. All non-responsive bid forms may be rejected.

<u>PRODUCTS &amp; SPECIES</u>	<u>ESTIMATED VOLUME*</u>	<u>ADVERTISED PRICE</u>	<u>BID PRICE/UNIT</u>
Sawtimber			
Paper Birch	4.6 MBF	\$ 11.00/MBF	\$ _____
Pulpwood			
Balsam Fir	47 Cords	\$ 4.20/Cord	\$ _____
Black Cherry	2 Cords	\$ 5.95/Cord	\$ _____
Black Spruce	162 Cords	\$ 2.35/Cord	\$ _____
Mixed Aspen	79 Cords	\$ 10.05/Cord	\$ _____
N. White Cedar	166 Cords	\$ 2.40/Cord	\$ _____
Paper Birch	106 Cords	\$ 1.30/Cord	\$ _____
Red Maple	38 Cords	\$ 5.95/Cord	\$ _____
Tamarack	24 Cords	\$ 3.25/Cord	\$ _____
White Pine	11 Cords	\$ 11.45/Cord	\$ _____

\*The volumes are statistically estimated within plus (+) or minus (-) 26.18 percent at 95% confidence level. These estimated volumes are final and not subject to adjustment. Prospective bidders are urged to examine this timber and to make their own estimates of quantity and quality.

I understand that any or all bids may be rejected. All bids must be signed and all bid items must be bid or the bid form may be rejected. I also understand that consideration and awarding a contract will be based upon my past performance and ability to complete the contract based upon equipment and staffing subject to my control.

FEDERAL ID: \_\_\_\_ - \_\_\_\_ - \_\_\_\_ or SOCIAL SECURITY NUMBER: \_\_\_\_ - \_\_\_\_ - \_\_\_\_

Company or individual bidding: \_\_\_\_\_

Company representative's name: \_\_\_\_\_

Address: \_\_\_\_\_

City: \_\_\_\_\_ State: \_\_\_\_\_ Zip: \_\_\_\_\_

IF AVAILABLE, PLEASE PLACE THE PERSONALIZED LABEL FROM YOUR PROSPECTUS IN THE ABOVE BOX.

Individual or company representative's signature: \_\_\_\_\_ Date: \_\_\_\_\_

Phone number : \_\_\_\_\_ Email (optional): \_\_\_\_\_

**THE WINNING BIDDER MUST COMPLETE THE VERIFICATION OF WORKER'S DISABILITY COMPENSATION ACT  
COMPLIANCE (ON REVERSE SIDE IF DOUBLE SIDED) WITHIN 21 DAYS OF SALE AWARD DATE**



## TIMBER SALE VERIFICATION OF WORKER'S DISABILITY COMPENSATION ACT COMPLIANCE

As required by Act 317, P.A. 1969 (Worker's Compensation) and  
Part 5 of Act 451 of 1994, as amended.

### FOR DEPARTMENT USE ONLY

Sale Number (XX - XXX - XX - XX)

Forest Management Unit:

### VERIFICATION OF WORKER'S DISABILITY COMPENSATION ACT COMPLIANCE

- This verification must be completed and submitted within 21 days of contract award and prior to the issuance of the timber sale contract.
- In addition, if boxes 2B or 2C are checked, then Notice of Exclusion or Certificate of Insurance must be submitted within twenty-one (21) days of the contract award and prior to the issuance of the timber sale contract.
- All Information must be typed or printed except for written signatures.

Please Check Appropriate Categories:

1. My business is organized as (you **must** check one of the boxes below):
  - A. ☐ Sole Proprietorship (individual)
  - B. ☐ Partnership
  - C. ☐ Corporation
2. You **must** check one of the boxes below:
  - A. ☐ I certify my business is a sole proprietorship and it has no employees but the sole proprietor. I am not subject to the Worker's Compensation Laws.
  - B. ☐ I certify my business has satisfied its obligation to the Worker's Compensation Act through the use of an approved Notice of Exclusion (BWC-337, Rev. 5/96). I will provide a copy of the Notice of Exclusion within 21 days of the contract award. (For questions or a copy of the BWC-337, please call the Worker's Compensation Bureau at 517-322-1195).
  - C. ☐ I certify my business has a Worker's Compensation Policy. I will provide an original Certificate of Insurance within twenty-one (21) days of the contract award.
3. If you have checked item 2(A) or 2(B), you **must** indicate the number of **both** full-time and part-time employees, other than yourself, including family members and active partners (if none, you must enter "0").

\_\_\_\_\_ Full-time Employees

\_\_\_\_\_ Part-time Employees

Name of Business		Federal ID (or) Social Security No.
Address		Telephone (       )
City	State	ZIP

*I hereby certify that the above information is true and correct. I agree to notify the Michigan DNR of any changes that occur in factors affecting my coverage during any of my present and future operations.*

\_\_\_\_\_  
Signature of Owner or Authorized Representative

\_\_\_\_\_  
Title

\_\_\_\_\_  
Date

Please complete the "SEALED BID" information on the next page