



**DEPARTMENT OF NATURAL RESOURCES  
STATE OF MICHIGAN  
TIMBER SALE PROSPECTUS #7799**

SCHEDULED SALE DATE AND TIME: 3:00 p.m. (local time) on June 4, 2026.

LOCATION: NEWBERRY MGMT UNIT, 5666 S STATE HWY M 123, NEWBERRY, MI 49868.

PROSPECTUS NOTE: The bidder is advised to inspect the sale area and review the location, estimated volumes, operating costs and contract terms of proposed sales. Please be aware that some landowners may request 60 days or more notice for access across their land.

Notice is hereby given that bids will be received by the Unit Manager, NEWBERRY MANAGEMENT UNIT, for certain timber on the following described lands:

Rainy Lake Heartbreak (42-009-25) / T49N, R11W, SEC. 5 , S1/2NW,SWNE,N1/2SW.

T49N, R11W, SEC. 6 , SENE,E1/2SE.

Luce County, Advertised Price \$21,923.15, 42.7 Acres, Red Pine, Jack Pine.

SALE NOTE: There is an ORV trail near the Sale Area and shown on the Timber Sale Map. See Sale Spec 5.2.39 for restrictions.

A recreation site such as a trail, pathway, or campground is within the sale area or the vicinity. Certain restrictions/specifications may be applicable including time restrictions.

Westbound And Down (42-015-25) / T49N, R11W, SEC. 6 , S1/2NE,N1/2SW,SESW,SE.

T49N, R11W, SEC. 7 , NE,N1/2SE.

T49N, R11W, SEC. 8 , SWNW,NWSW.

Luce County, Advertised Price \$86,742.35, 111.3 Acres, Red Pine, White Pine.

SALE NOTE: Road maintenance may be needed on this sale. See Sale Spec 4.2.3 and 4.2.4 for details.

An ORV trail is shown on the Timber Sale Map. See Sale Spec 5.2.39 for restrictions.

An Equestrian trail is shown on the Timber Sale Map. See Sale Spec 5.2.40 for additional information.

A recreation site such as a trail, pathway, or campground is within the sale area or the vicinity. Certain restrictions/specifications may be applicable including time restrictions.

Don't Look Up Pine (42-019-25) / T49N, R11W, SEC. 4 , N1/2SE.

T49N, R11W, SEC. 4 , S1/2NW,S1/2NE,N1/2SW,SWSW.

T49N, R11W, SEC. 5 , S1/2NE,SE.

Luce County, Advertised Price \$74,019.55, 167.9 Acres, Red Pine, White Pine.

SALE NOTE: Road maintenance is required on this sale. See Sale Spec 4.2.3 for details.

Within Payment Unit(s) 3, 6 and 7, harvesting is not permitted during the period of April 1 to July 30. This is applicable only if hawk nests are active within the area. If it is determined that the hawk nests are not active, timing restriction for cutting and skidding can be waived.

The Pine Ridge ORV trail is shown on the Timber Sale Map. See Sale Spec 5.2.39 for restrictions.

The Headquarters Lake Equestrian Trail is shown on the Timber Sale Map. See Sale Spec 5.2.40 for specific information.

The Sale Area has received damage from some age mortality. The Purchaser should harvest the wood as soon as possible.

A recreation site such as a trail, pathway, or campground is within the sale area or the vicinity. Certain restrictions/specifications may be applicable including time restrictions.

## BID INSTRUCTIONS (VER. 10/10/2022):

### 1. Scheduled Bid Location, Date, and Time (2/11)

Bids must be received by the Unit Manager, NEWBERRY OFFICE, 5666 S STATE HWY M 123, NEWBERRY, MI 49868, no later than 3:00 p.m. (local time) on June 4, 2026. For further information concerning this sale, contact Keith Magnusson at 906-291-0120 extension n/a.

### 2. Bidder's Qualifications (10/22)

If all or part of a timber sale was prepared by a private contractor, the contractor and that contractor's company are not permitted to bid on the timber sale. A person must be 18 years of age or older to purchase timber. Permanent employees of the Department of Natural Resources or members of their immediate household may not bid. Former employees, in the permanent or seasonal class, may not bid until 3 months after the last day of active duty. Bids will not be accepted from individuals or companies appearing on the DNR/FRD No-Bid List. This list contains the names of purchasers who previously failed to execute a contract within 21-days or who have a history of poor performance.

### 3. Preparation of Sealed Bids (5/16)

Bid Forms may be completed online thru Michigan DNR Timber Sale Online Bidding (OLB) at [www.michigan.gov/timberbidding](http://www.michigan.gov/timberbidding) or by completing the hardcopy Bid Form found in the Timber Sale Prospectus. Hardcopy Bid Forms shall be manually signed in ink. Registration in OLB is considered your 'signature' for all bids submitted thru that system. Bid prices must be entered for each species and product in the Bid Price column for all material subject to bidding and all fill-in blanks must be completed. If erasures or other changes appear on the hardcopy Bid Form, each erasure or change must be initialed by the person signing the bid.

### 4. Submission of Sealed Bids (5/16)

Bid forms may be obtained from the Unit Manager or thru OLB. Bids may be submitted hardcopy or thru OLB. All hardcopy bids must be submitted on the bid form and in an envelope clearly identified as described in this section. NOTE: Only one bid form per bid envelope. Sealed bids must be submitted to the Unit office designated in the prospectus and must be submitted at or prior to the time established in the prospectus. The envelope should show on the outside (a) the sale name or number and (b) the date and time of bid opening, as shown in the prospectus. Bids received after the time specified in the sale prospectus are late bids and will be rejected.

It is possible for a bidder to submit multiple bids on a single sale. For example, a bid may be submitted hardcopy and a bid may be submitted thru OLB. Or, two bidders from the same company could both submit bids on the same sale. If this were to happen, the State would accept all bids received and award the contract accordingly. All bidding and contractual requirements would apply to all bids received.

### 5. Public Opening of Sealed Bids (7/16)

If conditions permit, the sealed bids will be publicly opened and posted at the time and place set in the prospectus.

If a bidder, present at a bid opening, has submitted bids on more than one sale, that bidder may withdraw their unopened bid envelopes or announce the withdrawal of their online bid after being declared the successful bidder on one sale.

### 6. Award of Contract (1/11)

Award of the contract will be made to the Bidder whose bid, conforming to the prospectus, is most advantageous to the State of Michigan on the basis of total value at rates bid for the estimated quantities. The State reserves the right to reject any bid or waive any minor irregularity in bids received. A written award mailed (or otherwise furnished) to the successful Bidder shall be deemed to result in a binding contract without further action by either party.

### 7. Down Payment (1/11)

The Bidder to whom award is made must make a down payment within 21 days of the sale award. The amount of the down payment will be calculated as shown in the Bond and Payment Schedule of this prospectus. Only cash may be used to meet this requirement.

### 8. Performance Security (1/11)

As guarantee of faithful performance, a cash bond, certificate of deposit, surety bond or irrevocable letter of credit (LOC) is required within 21 days of the sale award. The amount of the performance security is shown in the Bond and

Payment Schedule of this prospectus. If an LOC or surety is used, the coverage must extend for at least 6 months beyond the contract expiration.

#### 9. Worker's Compensation (10/22)

Purchaser shall obtain worker's compensation insurance to cover claims under Michigan's Worker's Disability Compensation Act of 1969 or similar employee benefit act of any other state applicable to an employee. Verification of Worker's Disability Compensation Act Compliance must be completed and submitted within 21 days of contract award and prior to the issuance of the timber sale contract. In addition, if applicable, Notice of Exclusion or Certificate of Insurance must also be submitted.

#### 10. Timber Sale Contract (10/22)

Additional conditions and requirements common to all timber sales are listed on the timber sale contract (R4031) and are available on line at [www.michigan.gov/timber](http://www.michigan.gov/timber). Contact the Unit Manager for additional information or a sample contract. Within 21 days of the date of the award letter, the bidder must sign the contract and provide the required down payment, performance security, and verification of worker's disability compensation. The down payment and performance security shall be in accordance with the provisions of the timber sale contract, in the sums stated in this prospectus. If these actions are not taken, then the Bidder, the Bidder's corporation, and the corporation's principals may not be permitted to bid on State timber sales for a period of 3 months after the first offense, 6 months after the second offense, and 1 year after the third offense. An offense will only be counted against the Bidder for 5 years. In addition, the Bidder certifies that if awarded this contract, the Bidder will complete the timber sale contract in accordance with its terms and any modifications thereof including requirements to purchase, cut, and remove the included timber by the expiration date.

Payment Unit values in the State Forest Timber Sale Contract are calculated based on the advertised value of the Payment Unit as a percentage of the total advertised value of the contract. The advertised value of each Payment Unit is given in the Description of Timber by Payment Unit table on the Timber Sale Information page. For example, if the value of Payment Unit 1 is advertised as \$1,500 and the total Timber Sale value is advertised as \$10,000, the contract price for Payment Unit 1 will be 15% of the total bid price ( $\$1,500/\$10,000 * 100$ ).

#### 11. Disclaimer of Estimates and Bidder's Warranty of Inspection (10/22)

Before submitting this bid, the Bidder is advised and cautioned to inspect the sale area, review the requirements of the sale contract, and take other steps as may be reasonably necessary to ascertain the location, estimated volumes, construction estimates, and operating costs of the proposed sale. Failure to do so will not relieve the Bidder from responsibility for completing the contract.

The Bidder warrants that this bid is submitted solely on the basis of the Bidder's examination and inspection of the quality and quantity of the timber offered for sale and the Bidder's opinion of the value thereof and the costs of recovery. No reliance should be placed on the State of Michigan's estimates of timber quality, quantity or costs of recovery. Bidder further acknowledges that the State of Michigan: (i) expressly disclaims any warranty of fitness of timber for any purpose; (ii) offers this timber as is without any warranty of quality (merchantability) or quantity and (iii) expressly disclaims any warranty as to the quantity or quality of timber sold.

#### 12. Certification and Chain-of-Custody (10/22)

Unless otherwise indicated in the contract under section 7 – Other Conditions of the Sale Specific Conditions & Requirements, the area encompassed by this timber sale is certified to the standards of the Forest Stewardship Council (FSC) - Certificate #SCS-FM/COC-00090N and the Sustainable Forestry Initiative (SFI) - Certificate #NSF-SFIS-5Y031-SF5. Forest products from this sale may be delivered to the mill as "FSC 100% and / or SFI certified" as long as the contractor hauling the forest products is chain-of-custody (COC) certified or covered under a COC certificate from the destination mill. The purchaser is responsible for maintaining COC after leaving the sale area.

#### 13. Good Neighbor Authority (GNA) Requirements (10/22)

If the name of this timber sales contains the acronym GNA, it is authorized by the Good Neighbor Authority (GNA) and covered by various agreements between the U.S. Forest Service and the State. The timber sale occurs on federal land and the following conditions apply:

GNA contracts on US Forest Service land will not be awarded to purchasers on the Federal list of excluded parties. The System for Award Management (SAM) will be checked for active excluded parties prior to award of contract. In

addition, the Bidder to whom award is made must complete an Assurance Regarding Felony Conviction or Tax Delinquent Status for Corporate Applicants (AD-3031).

14. Good Neighbor Authority (GNA) Requirements, con't (10/22)

Bidder certifies, by signing this bid form, that to the best of Bidder's knowledge that the following representations are accurate and complete.

- a. That the Bidder and its principals are not presently debarred, suspended, proposed for debarment, declared ineligible, or voluntary excluded from timber sales (covered transactions) by any Federal department or agency.
- b. That the Bidder and its principals have not within a 3-year period preceding this bid been convicted of or had a civil judgment rendered against them for commission of fraud or a criminal offense in connection with obtaining , attempting to obtain, or performing a public (Federal, State, or local) transaction or contract under a public transaction; violation of Federal or State antitrust statutes or commission of embezzlement, theft, forgery, bribery, falsification or destruction of records, making false statements, or receiving stolen property.
- c. That the Bidder and its principals are not presently indicted for or otherwise criminally or civilly charged by a governmental entity (Federal, State, or local) with commission of any of the offenses enumerated in paragraph b of this certification.
- d. That the Bidder and its principals have not within a 3-year period preceding this bid had one or more public transactions (Federal, State, or local) terminated for breach or default of a timber or forest product contract.

Bidders that cannot certify this requirement, in whole or in part, shall submit an explanation with their bid.

Scott Bowen  
Director



# TIMBER SALE INFORMATION

Rainy Lake Heartbreak (42-009-25)  
T49N, R11W, SEC. 5; T49N, R11W, SEC. 6.  
Luce County (Advertised Price \$21,923.15)

SALE NOTE: There is an ORV trail near the Sale Area and shown on the Timber Sale Map. See Sale Spec 5.2.39 for restrictions.

A recreation site such as a trail, pathway, or campground is within the sale area or the vicinity. Certain restrictions/specifications may be applicable including time restrictions.

A timber sale contract for this lump sum, sealed bid timber sale will be awarded to the responsible bidder offering the highest sealed bid price. All units of volume listed below were estimated using the Inventory Manager computer program and the new Michigan taper model. Bids must be at or above the following advertised price for each product and species:

<u>PRODUCTS &amp; SPECIES</u>	<u>ESTIMATED UNITS*</u>	<u>ADVERTISED PRICE</u>
Pulpwood		
B. T. Aspen	21 Cords	\$ 12.00 / Cord
Balsam Fir	7 Cords	\$ 4.50 / Cord
Jack Pine	36 Cords	\$ 14.25 / Cord
Red Maple	8 Cords	\$ 6.35 / Cord
Red Pine	431 Cords	\$ 48.35 / Cord
White Pine	20 Cords	\$ 11.85 / Cord

\* The total volume is statistically estimated within plus (+) or minus (-) 20.21 percent. There are an estimated 523 cords on this timber sale, plus or minus 106 cords at the 95% confidence level. The estimated units are final and not subject to adjustment. Prospective bidders are urged to examine this timber and to make their own estimates of quantity and quality.

**BOND AND PAYMENT SCHEDULE:**

1. A bond in the amount of \$1,096.00 to insure faithful performance of the conditions of the contract will be deposited by the successful bidder within 21 days of the sale award.
2. Cutting in any sale or unit without the required advance payment would be considered a trespass.
3. Total payment must be paid in advance or according to the following schedule :
  - (a) Ten percent (10%) of the sale value must be paid within 21 days of the sale award.
  - (b) The 10% down payment will be credited towards the first unit cut.
  - (c) Payment for each of the following units must be made before cutting begins in that unit:
 

PAYMENT UNIT NUMBER	PERCENT OF TOTAL SALE VALUE
01	56.2%
02	43.8%
4. If no cutting takes place, the 10% down payment will not be refunded.
5. Operations on the contract issued will terminate on 12/31/2029.

**SALE STATISTICS**

Volumes were calculated in cubic feet using the Michigan taper model. Cubic foot volume includes all wood inside bark for the product indicated. For display purposes, cubic feet were converted to cords and MBF using a simple conversion factor, e.g. 79 cubic feet per cord and 185 cubic feet per MBF. The cubic foot volumes are precise; the cords and MBF volumes are not. Cubic foot volume cannot be directly converted to cords or boards with precision.

**SALE VOLUMES**

The total estimated sale volume may not equal the sum of the species/products due to the nature of statistical calculations associated with double sampling methodology.

VOLUME			STATISTICAL RANGE IN CORDS	
TOTAL CUBIC FEET	TOTAL CORDS	PERCENT ERROR	MINIMUM	MAXIMUM
41,298	523	20.21%	417	628

## VDU VOLUMES

A VDU is a Volume Determination Unit. Volumes and their associated statistics are calculated at the VDU level and summarized to the sale level. There is often a one to one relationship between a VDU and a Payment Unit, but not always, depending on the cruise design. Refer to the VDU TO PAYMENT UNIT table.

VDU	VOLUME		PERCENT ERROR	RANGE IN CORDS	
	TOTAL CUBIC FEET	TOTAL CORDS		MINIMUM	MAXIMUM
16	16,949	215	25.49%	160	269
21	24,349	308	29.82%	216	400
<b>TOTAL:</b>	<b>41,298</b>	<b>523</b>		<b>376</b>	<b>669</b>

## VDU TO PAYMENT UNIT

When a VDU is associated with more than one Payment Unit (PU), the VDU volumes are assigned to the PU based on acres of the VDU within the PU.

VDU	VDU ACRES	PU	PU ACRES
16	15.7	2	15.7
21	27.0	1	27.0
<b>TOTAL:</b>	<b>42.7</b>		<b>42.7</b>

## DESCRIPTION OF TIMBER BY PAYMENT UNIT (PU)

PU	MARKET GROUP	PRODUCT	QUANTITY	UNIT	ACRES	ADVERTISE PRICE
1	B. T. Aspen	Pulpwood	21	Cords	27.0	\$12,323.95
	Balsam Fir		2	Cords		
	Jack Pine		33	Cords		
	Red Maple		8	Cords		
	Red Pine		237	Cords		
	White Pine		7	Cords		
2	Balsam Fir	Pulpwood	5	Cords	15.7	\$9,599.20
	Jack Pine		3	Cords		
	Red Pine		194	Cords		
	White Pine		13	Cords		
<b>TOTAL:</b>			523	Cords		

## Sale Specific Conditions & Requirements

**Sale Name: Rainy Lake Heartbreak**

**Sale Number: 42-009-25 Seq#: 1**

### 1 - Sale Area

#### 1.2 - Boundaries

##### 1.2.1 - Painted Boundaries (9/19)

The sale boundary and Payment Unit boundaries are marked and identified by red and yellow paint. Exterior sale boundary lines against state are marked with red paint. Interior Payment Unit boundaries are marked with yellow paint. Retention patches are marked with red paint; no harvesting activities may occur within these areas. Yellow painted trees designating an interior Payment Unit boundary are only to be cut when all surrounding Payment Units have been paid.

### 2 - Timber Specifications

#### 2.1 - Included Timber

##### 2.1.4 - Designated Timber Unit(s) (6/17)

Within Payment Unit(s) 1 & 2, all jack pine, aspen, balsam fir, and red maple are designated for cutting which meet minimum piece specifications in 2.2 Utilization. In addition, cut all trees marked in orange paint above and below stump height. Do not cut any paper birch or oak that may exist.

### 4 - Transportation

#### 4.1 - Construction

##### 4.1.4 - Timber Removed for Construction (3/23)

Trees cut or damaged in the process of pre-approved road, landing, or skid trail construction will be decked in an area separate from other Designated Timber and not removed until measured by the Sale Administrator. Payment will be made at contract prices or average prices, if not on the contract.

##### 4.1.6 - Road Construction (4/24)

Construction of new roads (on timber sale map as proposed) or improvements of existing roads shall be done in such a way as to minimize the environmental and visual impacts. Merchantable trees shall be cut and utilized unless otherwise directed. Non-merchantable trees shall be severed and laid flat on the ground. Slash shall be scattered, not left in windrows, and kept a minimum of 10 feet back from the road edge. Stumps shall be set upright, not left on edge, and be moved at least 10 feet away from the road edge. Disturbed soil shall be feathered into the woods and not left in berms or windrows.

##### 4.1.7 - Road Closure (10/11)

All new roads built into the sale must be blocked to vehicle traffic within 30 days of completion of hauling. Overgrown roads that are reopened shall be considered new roads. In general, this will require constructing double earthen berms at strategic locations. Stumps and brush must be placed along the remainder of the trail. All stumps from road building and landing construction must be reserved to block any newly constructed roads upon completion of the sale. These stumps must be scattered along the road system to prohibit vehicular movement. Contact the Sale Administrator for specific details of design and placement.

### 5 - Operations

#### 5.1 - Notification

##### 5.1.1 - Pre-sale Conference (10/16)

A pre-sale conference between the Purchaser and Sale Administrator is required prior to beginning any operations to determine landing, road locations and skidding options on the south and west side of Rainy Lake.

#### 5.2 - Conduct of Operations

##### 5.2.1 - Slash

###### 5.2.1.8 - Slash Height (12/08)

No slash or tree tops may exceed 24 inches in height.

## 5.2.2 - Hazard Trees/Snags

### 5.2.2.1 - Den Trees (10/16)

Obvious hollow and/or den trees shall be protected and left standing unless they are a safety hazard.

### 5.2.31 - Landing Locations (9/13)

Landing areas are marked on the Timber Sale Map with a tree symbol. Landings must be confined to these designated sites unless otherwise authorized by the Unit Manager or his/her representative. In general, landings are limited to a "T" turnaround which will accommodate a truck with a 50-foot trailer.

### 5.2.32 - Decking/Landing Restoration (9/13)

All decking and landing areas must have the surface area restored to a condition equal to or better than before. This is to ensure the proper regeneration of the stand. Wood debris, chips and "cookies" from trimmings must be removed or scattered away from landing and loading areas and may not be windrowed on the edge.

### 5.2.37 - No Decking Areas (12/08)

No decking is allowed within 100 feet of CR 407 or Rainy Lake without permission of the Unit Manager or his/her representative.

### 5.2.38 - No Decking Against Live Trees (2/04)

Cut products may not be decked against unmarked or designated leave trees.

### 5.2.39 - ORV Trail/Route Protection (4/18)

There is an ORV trail near the sale area and shown on the Timber Sale Map. If the trail road west of the sale is used for trucking/skidding operations, maintain a 20-foot-wide slash, debris, and rut free zone daily using the ORV trail or route as the centerline. Do not damage any ORV trail signs. The road/trail shall be signed if it used for logging operations.

## 5.3 - Stream Protection

### 5.3.2 - Parking Equipment Near Water (10/23)

Within Payment Unit(s) 2 the parking of or storage of equipment is prohibited within 100 feet of water bodies or ground water supplies. All equipment, when not in use for harvest operations, must be parked a minimum of 100 feet away from water sources (streams, rivers, lakes, ponds, vernal pools, ground water sources) and 50 feet away from slopes leading to water sources and/or riparian areas. This restriction is for preventing unforeseen oil and/or fluid leaks from contaminating water bodies and/or ground water supplies.

## 5.4 - Soil Protection

### 5.4.2 - Skid Trails (2/04)

Skid trails up and down slopes should be avoided. If, however, this is unavoidable, these trails will be left in a non-erodible condition using water bars, logs, and slash. Placing of slash on these skid trails while logging is ongoing may alleviate need for any further action. At the direction of the Sale Administrator, seed, fertilizer, and mulch may also be required.

### 5.4.5 - Soil Caution (11/04)

Care must be taken to minimize soil damage due to the sandy soils.

## 5.8 - Protection of Endangered Species

### 5.8.5 - Protection of Raptor Nests (3/13)

All trees with raptor nests will be protected if found during harvesting operations. Notification will be made to the Unit Manager or his/her representative who will notify the Wildlife Biologist so an onsite evaluation and recommendation can be made, if necessary.

## 6 - Safety and Fire Prevention

### 6.2 - Signing

#### 6.2.1 - Road Posting (10/20)

The Purchaser is responsible for posting and maintaining caution signs on CR 407 prior to beginning operations. The road must be posted at appropriate distances from the sale area to warn of logging activity and truck traffic. Signs must be removed when harvest operations are suspended or completed. The Purchaser will provide these signs.

### 6.2.3 - Recreational Trail Posting (10/20)

The Purchaser is responsible for posting and maintaining caution signs on ORV trail prior to beginning operations. The trail must be posted at appropriate distances from the sale area activity to warn of logging activity and truck traffic at both ends of the trail. Signs must be removed when harvest operations are suspended or completed. The DNR will provide these signs.

## **7 - Other Conditions**

### 7.3 - Contract Modifications

#### 7.3.3 - Modification for Reforestation (8/05)

When contractual work of Purchaser has been accepted for any Payment Unit identified on Sale Area Map, Payment Unit will be eliminated from the Sale Area on written notice so that reforestation operations can begin.



### TIMBER SALE MAP

This information provided by authority of Part 525, 1994 PA 451, as amended.

Sale Number <b>42-009-25</b>	Date 05/29/2025
Scale 1:6,450	Page 1
	Of 1

Forest Management Unit Newberry Mgt Unit	County Luce	Mapped By: Anthony Ciaramitaro
		Cruised By: Newberry Unit Staff

Township 49N	Range 11W	Section(s) and Subdivision(s) Sec. 5 S1/2NW,SWNE,N1/2SW; Sec. 6 SENE,E1/2SE;
-----------------	--------------	--

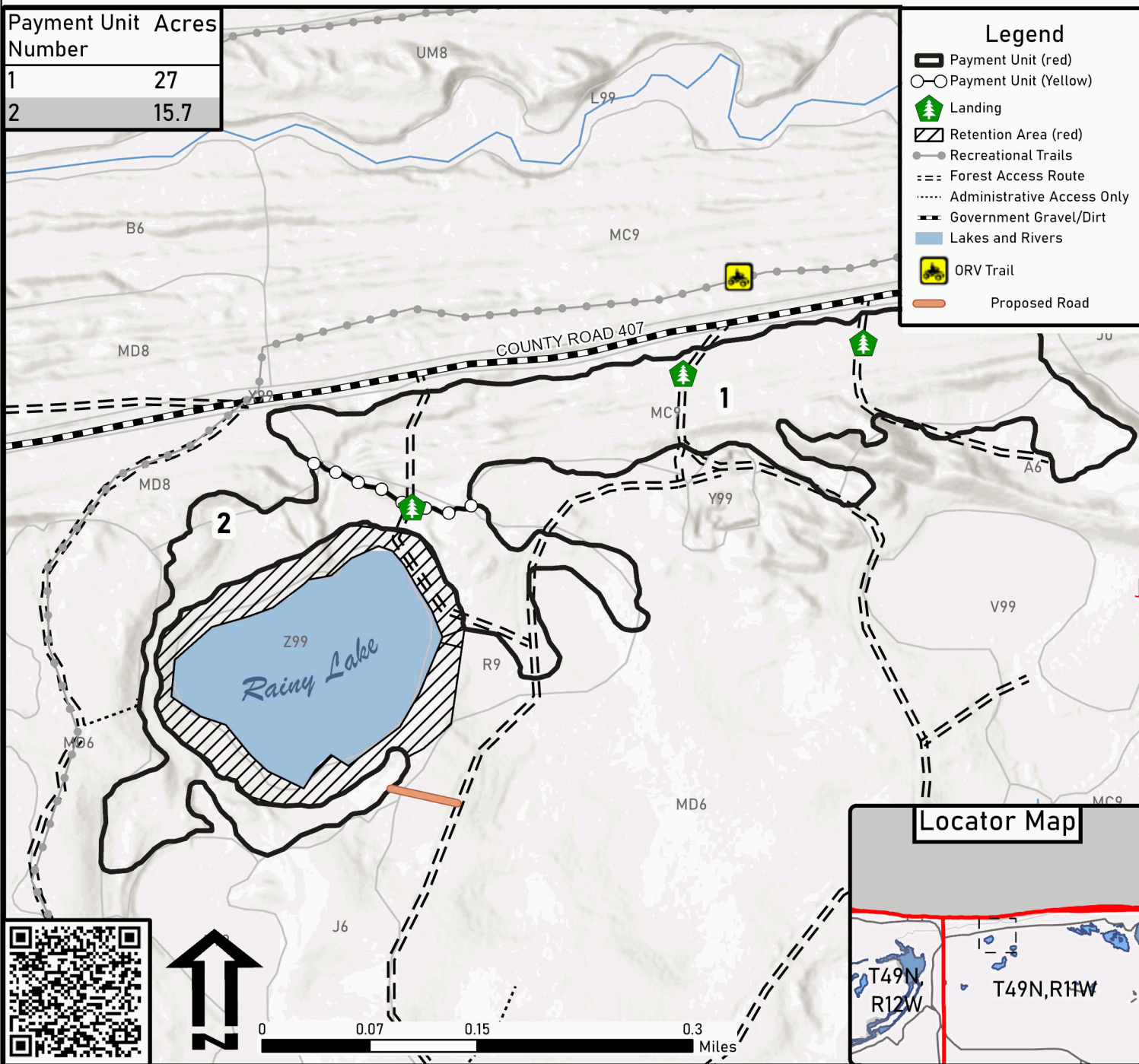
Cover Type			
A = Aspen	J = Jack Pine	O = Oak	U = Upland Brush
B = Paper Birch	K = Rock	P = Lowland Poplar	UM = Upland Mix Forest
C = Cedar	L = Lowland Brush	Q = Mixed Swamp Conifer	V = Bog or Marsh
D = Treed Bog	LM = Lowland Mix Forest	R = Red Pine	W = White Pine
E = Swamp Hardwoods	M = Maple, Beech, Birch	S = Black Spruce	X = Non Stocked
F = Spruce/Fir	MC = Mixed Conifer	T = Tamarack	Y = Sand
G = Grass	MD = Mixed Deciduous	Z = Water	
H = Hemlock	N = Marsh		

Density	
0 = Non Stocked	5 = Pole Timber Medium
1 = Seedling Sapling Poor	6 = Pole Timber Well
2 = Seedling Sapling Medium	7 = Saw Timber Poor
3 = Seedling Sapling Well	8 = Saw Timber Medium
4 = Pole Timber Poor	9 = Saw Timber Well

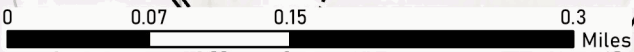
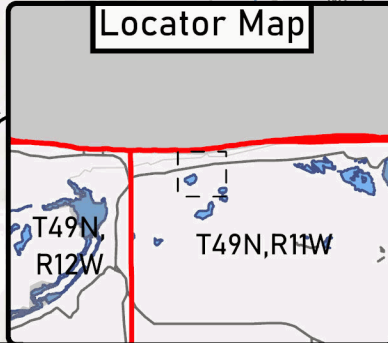
## Rainy Lake Heartbreak

42.7 Acres

Payment Unit Number	Acres
1	27
2	15.7



Legend	
	Payment Unit (red)
	Payment Unit (Yellow)
	Landing
	Retention Area (red)
	Recreational Trails
	Forest Access Route
	Administrative Access Only
	Government Gravel/Dirt
	Lakes and Rivers
	ORV Trail
	Proposed Road



# TIMBER SALE INFORMATION

## Westbound And Down (42-015-25)

T49N, R11W, SEC. 6; T49N, R11W, SEC. 7; T49N, R11W, SEC. 8.  
Luce County (Advertised Price \$86,742.35)

SALE NOTE: Road maintenance may be needed on this sale. See Sale Spec 4.2.3 and 4.2.4 for details.

An ORV trail is shown on the Timber Sale Map. See Sale Spec 5.2.39 for restrictions.

An Equestrian trail is shown on the Timber Sale Map. See Sale Spec 5.2.40 for additional information.

A recreation site such as a trail, pathway, or campground is within the sale area or the vicinity. Certain restrictions/specifications may be applicable including time restrictions.

A timber sale contract for this lump sum, sealed bid timber sale will be awarded to the responsible bidder offering the highest sealed bid price. All units of volume listed below were estimated using the Inventory Manager computer program and the new Michigan taper model. Bids must be at or above the following advertised price for each product and species:

<u>PRODUCTS &amp; SPECIES</u>	<u>ESTIMATED UNITS*</u>	<u>ADVERTISED PRICE</u>
Pulpwood		
B. T. Aspen	10 Cords	\$ 12.00 / Cord
Balsam Fir	10 Cords	\$ 4.50 / Cord
Black Spruce	2 Cords	\$ 3.00 / Cord
Hemlock	3 Cords	\$ 3.95 / Cord
Jack Pine	3 Cords	\$ 14.25 / Cord
Mixed Hardwood	133 Cords	\$ 6.35 / Cord
Red Pine	1,668 Cords	\$ 48.35 / Cord
White Pine	424 Cords	\$ 11.85 / Cord

\* The total volume is statistically estimated within plus (+) or minus (-) 8.62 percent. There are an estimated 2,250 cords on this timber sale, plus or minus 194 cords at the 95% confidence level. The estimated units are final and not subject to adjustment. Prospective bidders are urged to examine this timber and to make their own estimates of quantity and quality.

### **BOND AND PAYMENT SCHEDULE:**

1. A bond in the amount of \$4,337.00 to insure faithful performance of the conditions of the contract will be deposited by the successful bidder within 21 days of the sale award.
2. Cutting in any sale or unit without the required advance payment would be considered a trespass.
3. Total payment must be paid in advance or according to the following schedule:
  - (a) Ten percent (10%) of the sale value must be paid within 21 days of the sale award.
  - (b) The 10% down payment will be credited towards the first unit cut.
  - (c) Payment for each of the following units must be made before cutting begins in that unit:

<u>PAYMENT UNIT NUMBER</u>	<u>PERCENT OF TOTAL SALE VALUE</u>
01	9.4%
02	16.7%
03	27.4%
04	9.6%
05	36.9%

4. If no cutting takes place, the 10% down payment will not be refunded.
5. Operations on the contract issued will terminate on 12/31/2030.

### **SALE STATISTICS**

Volumes were calculated in cubic feet using the Michigan taper model. Cubic foot volume includes all wood inside bark for the product indicated. For display purposes, cubic feet were converted to cords and MBF using a simple conversion factor, e.g. 79 cubic feet per cord and 185 cubic feet per MBF. The cubic foot volumes are precise; the cords and MBF volumes are not. Cubic foot volume cannot be directly converted to cords or boards with precision.

## SALE VOLUMES

The total estimated sale volume may not equal the sum of the species/products due to the nature of statistical calculations associated with double sampling methodology.

VOLUME			STATISTICAL RANGE IN CORDS	
TOTAL CUBIC FEET	TOTAL CORDS	PERCENT ERROR	MINIMUM	MAXIMUM
177,747	2,250	8.62%	2,056	2,444

## VDU VOLUMES

A VDU is a Volume Determination Unit. Volumes and their associated statistics are calculated at the VDU level and summarized to the sale level. There is often a one to one relationship between a VDU and a Payment Unit, but not always, depending on the cruise design. Refer to the VDU TO PAYMENT UNIT table.

	VOLUME			RANGE IN CORDS	
VDU	TOTAL CUBIC FEET	TOTAL CORDS	PERCENT ERROR	MINIMUM	MAXIMUM
5	14,681	186	21.16%	147	225
12	71,178	901	11.75%	795	1,007
23	16,011	203	29.24%	143	262
26	75,877	960	15.51%	811	1,109
<b>TOTAL:</b>	<b>177,747</b>	<b>2,250</b>		<b>1,897</b>	<b>2,603</b>

## VDU TO PAYMENT UNIT

When a VDU is associated with more than one Payment Unit (PU), the VDU volumes are assigned to the PU based on acres of the VDU within the PU.

VDU	VDU ACRES	PU	PU ACRES
<b>TOTAL:</b>			

**DESCRIPTION OF TIMBER BY PAYMENT UNIT (PU)**

PU	MARKET GROUP	PRODUCT	QUANTITY	UNIT	ACRES	ADVERTISE PRICE
1	Mixed Hardwood	Pulpwood	8	Cords	13.3	\$8,194.45
	<i>Paper Birch</i>		6	<i>Cords</i>		
	<i>Red Maple</i>		1	<i>Cords</i>		
	<i>Sugar Maple</i>		1	<i>Cords</i>		
	Red Pine		165	Cords		
	White Pine		14	Cords		
2	Balsam Fir	Pulpwood	2	Cords	18.5	\$14,443.30
	Mixed Hardwood		35	Cords		
	<i>Paper Birch</i>		26	<i>Cords</i>		
	<i>Red Maple</i>		9	<i>Cords</i>		
	Red Pine		291	Cords		
	White Pine		12	Cords		
3	Balsam Fir	Pulpwood	2	Cords	30.5	\$23,800.90
	Jack Pine		1	Cords		
	Mixed Hardwood		60	Cords		
	<i>Beech</i>		1	<i>Cords</i>		
	<i>Paper Birch</i>		43	<i>Cords</i>		
	<i>Red Maple</i>		16	<i>Cords</i>		
	Red Pine		479	Cords		
	White Pine		20	Cords		
	4		B. T. Aspen	Pulpwood		
Mixed Hardwood		26	Cords			
<i>Paper Birch</i>		9	<i>Cords</i>			
<i>Red Maple</i>		17	<i>Cords</i>			
Red Pine		165	Cords			
White Pine		6	Cords			
5	B. T. Aspen	Pulpwood	4	Cords	33.4	\$32,017.75
	Balsam Fir		6	Cords		
	Black Spruce		2	Cords		
	Hemlock		3	Cords		
	Jack Pine		2	Cords		
	Mixed Hardwood		4	Cords		
	<i>Red Maple</i>		4	<i>Cords</i>		
	Red Pine		568	Cords		
	White Pine		372	Cords		
	TOTAL:			2,253		

# Sale Specific Conditions & Requirements

**Sale Name: Westbound And Down**

**Sale Number: 42-015-25 Seq#: 1**

## 1 - Sale Area

### 1.2 - Boundaries

#### 1.2.1 - Painted Boundaries (9/19)

The sale boundary and Payment Unit boundaries are marked and identified by red and purple paint and unmarked trails. Exterior sale boundary lines against state are marked with red paint. Payment Unit 5 is unmarked along the east side (trail), and Payment Unit 3 is unmarked along the south side (trail). Interior Payment Unit boundaries are marked with purple paint. Retention patches are marked with red paint; no harvesting activities may occur within these areas. Purple painted trees designating an interior Payment Unit boundary are only to be cut when all surrounding Payment Units have been paid.

## 2 - Timber Specifications

### 2.1 - Included Timber

#### 2.1.1 - Clearcut Unit(s) with Unmerchantable Trees (6/14)

Within Payment Unit(s) #'s 2, 3, 4, 5, cut all trees that are two (2) inches or more at DBH.

#### 2.1.7 - Leave Tree Marked Unit(s) (6/14)

Within Payment Unit(s) # 1, all trees, which meet minimum piece specifications in 2.2 Utilization, are designated for cutting except leave all oak and any trees marked with green paint above and below stump height.

### 2.2 - Utilization

#### 2.2.3 - Stump Heights (12/24)

Stump heights within the Sale Area Payment Unit(s) #'s 2, 3, 4, 5 shall not exceed six (6) inches for all trees. This is in order to facilitate planting operations.

## 3 - Payments

### 3.3 - Pre-measured Sales

#### 3.3.4 - Dividing Payment Units (7/14)

Payment Unit(s) #'s 2, 3, 5 may be divided at the request of the Purchaser and upon approval of the Unit Manager. Dividing Payment Units is a contract modification which requires a Timber Sale Contract Amendment. There will be only one division per Payment Unit.

## 4 - Transportation

### 4.1 - Construction

#### 4.1.4 - Timber Removed for Construction (3/23)

Trees cut or damaged in the process of pre-approved road, landing, or skid trail construction will be decked in an area separate from other Designated Timber and not removed until measured by the Sale Administrator. Payment will be made at contract prices or average prices, if not on the contract.

#### 4.1.6 - Road Construction (4/24)

Construction of new roads or improvements of existing roads shall be done in such a way as to minimize the environmental and visual impacts. Merchantable trees shall be cut and utilized unless otherwise directed. Non-merchantable trees shall be severed and laid flat on the ground. Slash shall be scattered, not left in windrows, and kept a minimum of 10 feet back from the road edge. Stumps shall be set upright, not left on edge, and be moved at least 10 feet away from the road edge. Disturbed soil shall be feathered into the woods and not left in berms or windrows.

#### 4.1.7 - Road Closure (10/11)

All new roads built into the sale must be blocked to vehicle traffic upon completion of the sale. Overgrown roads that are reopened shall be considered new roads. In general, this will require constructing a four (4') foot high berm of stumps and logs covered with earth. These roads must be rendered impassable to cars and trucks. Contact the Sale Administrator for specific details of design and placement.

## 4.2 - Maintenance

### 4.2.3 - Road maintenance (8/13)

The following road maintenance may be needed, this includes cleaning of drainage areas, grading, crowning and filling with gravel if necessary, for the removal of forest products from the sale.

### 4.2.4 - Grading (10/16)

For completion of the sale, state forest roads must be graded. In general, this will require a road grader or bulldozer to shape up the roads after forest products have been hauled off site. This includes cleaning of drainage areas, grading, crowning and filling with gravel, if necessary. The grading equipment to be used must be approved by the Unit Manager or his/her representative.

## 5 - Operations

### 5.2 - Conduct of Operations

#### 5.2.1 - Slash

##### 5.2.1.8 - Slash Height (12/08)

No slash or tree tops may exceed 24 inches in height.

##### 5.2.1.11 - Slash for Reforestation (3/21)

To facilitate reforestation, the Sale Area or Payment Unit(s) # 2, 3, 4, 5, shall be left with slash evenly distributed. Bunched tops within the cutting area shall be broken up and scattered. Stumps shall be cut low to the ground. Processing sites shall not be left with a compacted layer of slash; tops from these sites shall be hauled back into the cut area and scattered.

#### 5.2.2 - Hazard Trees/Snags

##### 5.2.2.1 - Den Trees (10/16)

Obvious hollow and/or den trees shall be protected and left standing unless they are a safety hazard.

#### 5.2.3 - Operating Restrictions

##### 5.2.3.6 - Bark Beetle Restriction (1/25)

In the event drought creates a high risk of pine bark beetle infestation, pine is not to be cut during the period March 1 through July 1, unless all portions of trees greater than two (2) inches in diameter are removed from the Sale Area, reduced to chips, or treated to the satisfaction of the Unit Manager or his/her representative, within 15 days of being severed from the stump. Pine log decks, pulpwood piles and treetops that are piled for chipping in the fall or winter within a 1/4 mile of susceptible sites must be removed before March 15. Residual slash must not be placed in piles or rows and must be spread over the site for quick drying. The Department of Natural Resources will exercise this specification if the risk of damage warrants.

##### 5.2.32 - Decking/Landing Restoration (9/13)

All decking and landing areas must have the surface area restored to a condition equal to or better than before. This is to ensure the proper regeneration of the stand. Wood debris, chips and "cookies" from trimmings must be removed or scattered away from landing and loading areas and may not be windrowed on the edge.

##### 5.2.38 - No Decking Against Live Trees (2/04)

Cut products may not be decked against unmarked or designated leave trees.

##### 5.2.39 - ORV Trail/Route Protection (4/18)

The ORV trail is shown on the Timber Sale Map. Do not damage carsonite ORV trail markers. All stumps within five (5) feet of the trail must be cut flush with the ground. Maintain a 20-foot-wide slash, debris, and rut free zone daily using the ORV trail or route as the centerline. Do not run equipment down the ORV trail or route.

##### 5.2.40 - Pathway Protection (10/10)

The Equestrian trail is shown on the Timber Sale Map. Do not cut trees or damage posts with blue pathway markers. Remove accumulated debris on the trail on a daily basis.

## 5.8 - Protection of Endangered Species

### 5.8.5 - Protection of Raptor Nests (3/13)

All trees with raptor nests will be protected if found during harvesting operations. Notification will be made to the Unit Manager or his/her representative who will notify the Wildlife Biologist so an onsite evaluation and recommendation can be made, if necessary.

## 6 - Safety and Fire Prevention

### 6.2 - Signing

#### 6.2.1 - Road Posting (10/20)

The Purchaser is responsible for posting and maintaining caution signs on County Road 410 West or County Road 407 prior to beginning operations. The road must be posted at appropriate distances from the Sale Area to warn of logging activity and truck traffic. Signs must be removed when harvest operations are suspended or completed. The Purchaser will provide these signs.

#### 6.2.3 - Recreational Trail Posting (10/20)

The Purchaser is responsible for posting and maintaining caution signs on both the Equestrian and ORV Trails prior to beginning operations. The trail must be posted at appropriate distances from the Sale Area to warn of logging activity and truck traffic at both ends of the trail. Signs must be removed when harvest operations are suspended or completed. The DNR will provide these signs.

## 7 - Other Conditions

### 7.3 - Contract Modifications

#### 7.3.3 - Modification for Reforestation (8/05)

When contractual work of Purchaser has been accepted for any Payment Unit identified on Sale Area Map, Payment Unit will be eliminated from the Sale Area on written notice so that reforestation operations can begin.



### TIMBER SALE MAP

This information provided by authority of Part 525, 1994 PA 451, as amended.

Sale Number <b>42-015-25</b>	Date 07/01/2025
Scale 1:12,000	Page 1
	Of 1

Forest Management Unit Newberry Mgt Unit	County Luce	Mapped By: Matt Payment
		Cruised By: Newberry Field Staff

Township 49N	Range 11W	Section(s) and Subdivision(s) Sec. 6 S1/2NE,N1/2SW,SESW,SE; Sec. 7 NE,N1/2SE; Sec. 8 SWNW,NWSW;
-----------------	--------------	---

Cover Type			
A = Aspen	J = Jack Pine	O = Oak	U = Upland Brush
B = Paper Birch	K = Rock	P = Lowland Poplar	UM = Upland Mix Forest
C = Cedar	L = Lowland Brush	Q = Mixed Swamp Conifer	V = Bog or Marsh
D = Treed Bog	LM = Lowland Mix Forest	R = Red Pine	W = White Pine
E = Swamp Hardwoods	M = Maple, Beech, Birch	S = Black Spruce	X = Non Stocked
F = Spruce/Fir	MC = Mixed Conifer	T = Tamarack	Y = Sand
G = Grass	MD = Mixed Deciduous	Z = Water	
H = Hemlock	N = Marsh		

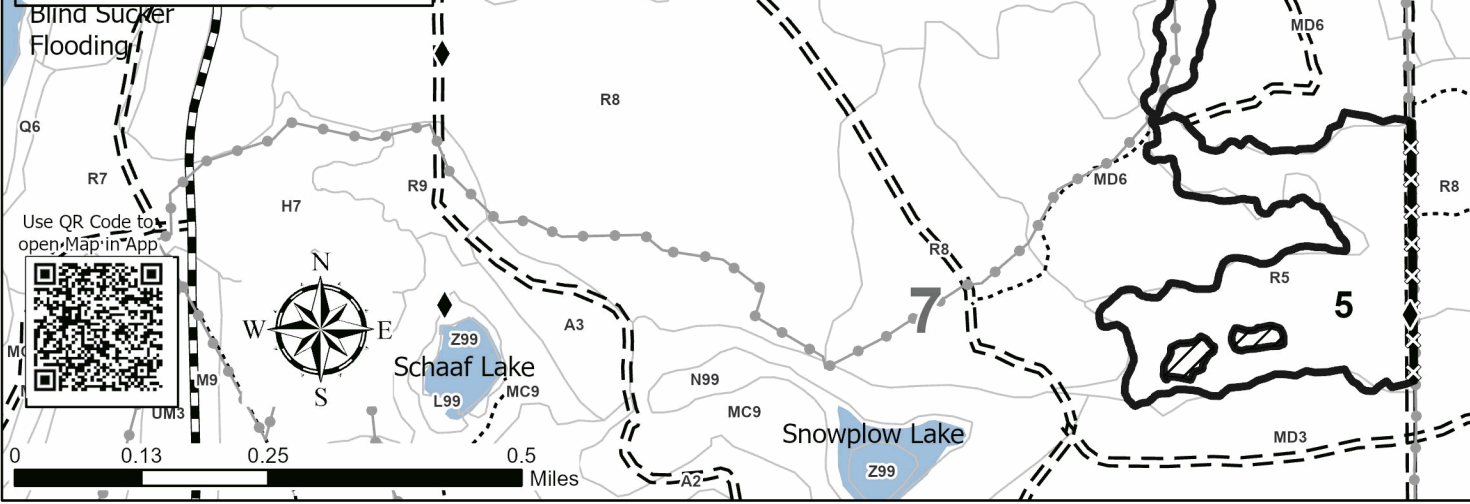
Density	
0 = Non Stocked	5 = Pole Timber Medium
1 = Seedling Sapling Poor	6 = Pole Timber Well
2 = Seedling Sapling Medium	7 = Saw Timber Poor
3 = Seedling Sapling Well	8 = Saw Timber Medium
4 = Pole Timber Poor	9 = Saw Timber Well

Payment Unit Number	Acres
1	13.3
2	18.5
3	30.5
4	15.6
5	33.4

## Westbound And Down

### 111.3 Acres

Legend	
	Against State (Red)
	Against State (Unpainted)
	Payment Unit (Purple)
	Recreational Trails
	Field Grade Corner
	Primary Forest Road
	Forest Access Route
	Administrative Access Only
	Paved Road
	Government Gravel/Dirt
	Private Gravel/Dirt
	Retention Areas





## TIMBER SALE INFORMATION

Don't Look Up Pine (42-019-25)  
 T49N, R11W, SEC. 4; T49N, R11W, SEC. 5.  
 Luce County (Advertised Price \$74,019.55)

SALE NOTE: Road maintenance is required on this sale. See Sale Spec 4.2.3 for details.

Within Payment Unit(s) 3, 6 and 7, harvesting is not permitted during the period of April 1 to July 30. This is applicable only if hawk nests are active within the area. If it is determined that the hawk nests are not active, timing restriction for cutting and skidding can be waived.

The Pine Ridge ORV trail is shown on the Timber Sale Map. See Sale Spec 5.2.39 for restrictions.

The Headquarters Lake Equestrian Trail is shown on the Timber Sale Map. See Sale Spec 5.2.40 for specific information.

The Sale Area has received damage from some age mortality. The Purchaser should harvest the wood as soon as possible.

A recreation site such as a trail, pathway, or campground is within the sale area or the vicinity. Certain restrictions/specifications may be applicable including time restrictions.

A timber sale contract for this lump sum, sealed bid timber sale will be awarded to the responsible bidder offering the highest sealed bid price. All units of volume listed below were estimated using the Inventory Manager computer program and the new Michigan taper model. Bids must be at or above the following advertised price for each product and species:

<u>PRODUCTS &amp; SPECIES</u>	<u>ESTIMATED UNITS*</u>	<u>ADVERTISED PRICE</u>
Pulpwood		
Balsam Fir	32 Cords	\$ 4.20 / Cord
Black Spruce	13 Cords	\$ 2.80 / Cord
Jack Pine	117 Cords	\$ 13.30 / Cord
Mixed Aspen	137 Cords	\$ 11.20 / Cord
Paper Birch	39 Cords	\$ 1.25 / Cord
Red Maple	57 Cords	\$ 5.95 / Cord
Red Pine	1,490 Cords	\$ 45.10 / Cord
White Pine	287 Cords	\$ 11.05 / Cord

\* The total volume is statistically estimated within plus (+) or minus (-) 10.40 percent. There are an estimated 2,173 cords on this timber sale, plus or minus 226 cords at the 95% confidence level. The estimated units are final and not subject to adjustment. Prospective bidders are urged to examine this timber and to make their own estimates of quantity and quality.

**BOND AND PAYMENT SCHEDULE:**

1. A bond in the amount of \$3,701.00 to insure faithful performance of the conditions of the contract will be deposited by the successful bidder within 21 days of the sale award.
2. Cutting in any sale or unit without the required advance payment would be considered a trespass.
3. Total payment must be paid in advance or according to the following schedule :
  - (a) Ten percent (10%) of the sale value must be paid within 21 days of the sale award.
  - (b) The 10% down payment will be credited towards the first unit cut.
  - (c) Payment for each of the following units must be made before cutting begins in that unit:

PAYMENT UNIT NUMBER	PERCENT OF TOTAL SALE VALUE
01	4.1%
02	15.0%
03	4.9%
04	9.6%
05	3.0%
06	14.5%
07	19.6%
08	17.1%
09	12.2%

4. If no cutting takes place, the 10% down payment will not be refunded.
5. Operations on the contract issued will terminate on 12/31/2030.

**SALE STATISTICS**

Volumes were calculated in cubic feet using the Michigan taper model. Cubic foot volume includes all wood inside bark for the product indicated. For display purposes, cubic feet were converted to cords and MBF using a simple conversion factor, e.g. 79 cubic feet per cord and 185 cubic feet per MBF. The cubic foot volumes are precise; the cords and MBF volumes are not. Cubic foot volume cannot be directly converted to cords or boards with precision.

### SALE VOLUMES

The total estimated sale volume may not equal the sum of the species/products due to the nature of statistical calculations associated with double sampling methodology.

VOLUME			STATISTICAL RANGE IN CORDS	
TOTAL CUBIC FEET	TOTAL CORDS	PERCENT ERROR	MINIMUM	MAXIMUM
171,629	2,173	10.40%	1,947	2,399

### VDU VOLUMES

A VDU is a Volume Determination Unit. Volumes and their associated statistics are calculated at the VDU level and summarized to the sale level. There is often a one to one relationship between a VDU and a Payment Unit, but not always, depending on the cruise design. Refer to the VDU TO PAYMENT UNIT table.

VDU	VOLUME			RANGE IN CORDS	
	TOTAL CUBIC FEET	TOTAL CORDS	PERCENT ERROR	MINIMUM	MAXIMUM
33	76,024	962	17.49%	794	1,131
39	47,786	605	14.47%	517	692
46	47,818	605	20.99%	478	732
<b>TOTAL:</b>	<b>171,629</b>	<b>2,173</b>		<b>1,790</b>	<b>2,555</b>

### VDU TO PAYMENT UNIT

When a VDU is associated with more than one Payment Unit (PU), the VDU volumes are assigned to the PU based on acres of the VDU within the PU.

VDU	VDU ACRES	PU	PU ACRES
<b>TOTAL:</b>			

**DESCRIPTION OF TIMBER BY PAYMENT UNIT (PU)**

PU	MARKET GROUP	PRODUCT	QUANTITY	UNIT	ACRES	ADVERTISE PRICE
1	Balsam Fir Black Spruce Jack Pine Mixed Aspen <i>B. T. Aspen</i> <i>Quaking Aspen</i> Paper Birch Red Maple Red Pine White Pine	Pulpwood	4 1 5 16 6 10 4 6 57 17	Cords Cords Cords Cords <i>Cords</i> <i>Cords</i> Cords Cords Cords Cords	6.3	\$3,064.55
2	Balsam Fir Black Spruce Jack Pine Mixed Aspen <i>B. T. Aspen</i> <i>Quaking Aspen</i> Paper Birch Red Maple Red Pine White Pine	Pulpwood	13 4 17 55 21 34 12 21 208 62	Cords Cords Cords Cords <i>Cords</i> <i>Cords</i> Cords Cords Cords Cords	22.8	\$11,113.75
3	Balsam Fir Black Spruce Jack Pine Mixed Aspen <i>B. T. Aspen</i> <i>Quaking Aspen</i> Paper Birch Red Maple Red Pine White Pine	Pulpwood	4 1 6 19 7 12 4 7 68 20	Cords Cords Cords Cords <i>Cords</i> <i>Cords</i> Cords Cords Cords Cords	7.5	\$3,646.65
4	Balsam Fir Black Spruce Jack Pine Mixed Aspen <i>B. T. Aspen</i> <i>Quaking Aspen</i> Paper Birch Red Maple Red Pine White Pine	Pulpwood	8 3 11 36 13 23 8 13 133 40	Cords Cords Cords Cords <i>Cords</i> <i>Cords</i> Cords Cords Cords Cords	14.6	\$7,119.15
5	Balsam Fir Black Spruce Jack Pine Mixed Aspen <i>B. T. Aspen</i> <i>Quaking Aspen</i> Paper Birch Red Maple Red Pine White Pine	Pulpwood	3 1 3 11 4 7 3 4 42 13	Cords Cords Cords Cords <i>Cords</i> <i>Cords</i> Cords Cords Cords Cords	4.6	\$2,243.90
6	Paper Birch Red Pine White Pine	Pulpwood	3 233 22	Cords Cords Cords	20.4	\$10,755.15
7	Jack Pine Paper Birch	Pulpwood	1 5	Cords Cords	27.1	\$14,326.95

**DESCRIPTION OF TIMBER BY PAYMENT UNIT (PU), CON'T**

PU	MARKET GROUP	PRODUCT	QUANTITY	UNIT	ACRES	ADVERTISE PRICE
7 con't	Red Maple	Pulpwood	1	Cords		
	Red Pine		310	Cords		
	White Pine		29	Cords		
8	Black Spruce	Pulpwood	2	Cords	37.7	\$12,682.40
	Jack Pine		43	Cords		
	Red Maple		3	Cords		
	Red Pine		256	Cords		
	White Pine		49	Cords		
9	Black Spruce	Pulpwood	1	Cords	26.9	\$9,067.05
	Jack Pine		31	Cords		
	Red Maple		2	Cords		
	Red Pine		183	Cords		
	White Pine		35	Cords		
TOTAL:			2,172	Cords		

# Sale Specific Conditions & Requirements

**Sale Name: Don't Look Up Pine**

**Sale Number: 42-019-25 Seq#: 1**

## 1 - Sale Area

### 1.2 - Boundaries

#### 1.2.1 - Painted Boundaries (9/19)

The sale boundary and Payment Unit boundaries are marked and identified by red and purple paint. Exterior sale boundary lines against state are marked with red paint. Interior Payment Unit boundaries are marked with purple paint. Retention patches are marked with red paint; no harvesting activities may occur within these areas. The painted boundary line trees are not Included Timber and are to be protected. Purple painted trees designating an interior Payment Unit boundary are only to be cut when all surrounding Payment Units have been paid.

## 2 - Timber Specifications

### 2.1 - Included Timber

#### 2.1.2 - Clearcut Unit(s) w/o Unmerchantable Trees (8/11)

Within Payment Unit(s) 6 and 7, cut all trees which meet minimum piece specifications in 2.2 Utilization.

#### 2.1.3 - Cut Tree Marked Unit(s) (12/08)

Within Payment Unit(s) 1, 2, 3, 4, 5, 8, and 9, trees are designated for cutting when marked with orange paint above and below stump height, regardless of merchantability. All merchantable aspen, balsam fir, red maple, and paper birch are to be cut.

### 2.2 - Utilization

#### 2.2.3 - Stump Heights (12/24)

Stump heights within Payment Units 6 and 7 shall not exceed 12 inches for trees greater than 10 inches at DBH and four (4) inches for trees smaller than 10 inches at DBH. This is in order to facilitate planting operations.

## 3 - Payments

### 3.3 - Pre-measured Sales

#### 3.3.4 - Dividing Payment Units (7/14)

Payment Unit(s) 2, 4, and 6 - 9 may be divided at the request of the Purchaser and upon approval of the Unit Manager.

Dividing Payment Units is a contract modification which requires a Timber Sale Contract Amendment. There will be only one division per Payment Unit.

### 3.4 - Damaged Timber

#### 3.4.3 - Special Protection Areas (8/11)

The Purchaser shall protect special protection areas from damage by the Purchaser's operations. Special protection areas are marked with a red boundary line. The Purchaser shall not cut live or dead trees within special protection areas. If the Purchaser's operations have cut or damaged special protection areas through carelessness, the Purchaser shall pay \$100 for each tree cut or damaged. Such payment does not constitute ownership of the undesignated timber.

## 4 - Transportation

### 4.1 - Construction

#### 4.1.4 - Timber Removed for Construction (3/23)

Trees cut or damaged in the process of pre-approved road, landing, or skid trail construction will be decked in an area separate from other Designated Timber and not removed until measured by the Sale Administrator. Payment will be made at contract prices or average prices, if not on the contract.

#### 4.1.6 - Road Construction (4/24)

Construction of new roads shall be done in such a way as to minimize the environmental and visual impacts. Merchantable trees shall be cut and utilized unless otherwise directed. Non-merchantable trees shall be severed and laid flat on the ground. Slash shall be scattered, not left in windrows, and kept a minimum of 10 feet back from the road edge. Stumps shall be set

upright, not left on edge, and be moved at least 10 feet away from the road edge. Disturbed soil shall be feathered into the woods and not left in berms or windrows.

#### 4.1.7 - Road Closure (10/11)

All new roads built into the sale must be blocked to vehicle traffic upon completion of the sale. Overgrown roads that are reopened shall be considered new roads. In general, this will require constructing a four (4') foot high berm of stumps and logs covered with earth. Stumps and brush must be placed along the remainder of the trail. All stumps from road building and landing construction must be reserved to block any newly constructed roads upon completion of the sale. These stumps must be scattered along the road system to prohibit vehicular movement. Contact the Sale Administrator for specific details of design and placement.

#### 4.1.8 - Road Work (1) (8/07)

One hundred yards of 3" minus gravel is required on access road along western boundary of PU 6 starting at County Road 407. Gravel needs to be placed before cutting PU #s 1-5.

### 4.2 - Maintenance

#### 4.2.3 - Road maintenance (8/13)

The following road maintenance is required on the road accessing Payment Units 4, 5 and 6 from CR 407: within 60 days of completion of hauling, or if no hauling occurs for 60 days, the road must be maintained and graded. This includes cleaning of drainage areas, grading, crowning and filling with gravel, if necessary. Damages will be assessed if grading/repair does not occur.

## 5 - Operations

### 5.2 - Conduct of Operations

#### 5.2.1 - Slash

##### 5.2.1.8 - Slash Height (12/08)

No slash or tree tops may exceed 24 inches in height.

##### 5.2.1.11 - Slash for Reforestation (3/21)

To facilitate reforestation, Payment Units 6 and 7 shall be left with slash evenly distributed. Bunched tops within the cutting area shall be broken up and scattered. Stumps shall be cut low to the ground. Processing sites shall not be left with a compacted layer of slash; tops from these sites shall be hauled back into the cut area and scattered.

#### 5.2.2 - Hazard Trees/Snags

##### 5.2.2.1 - Den Trees (10/16)

Obvious hollow and/or den trees shall be protected and left standing unless they are a safety hazard.

#### 5.2.3 - Operating Restrictions

##### 5.2.3.1 - Operating Restrictions (9/11)

Within Payment Unit(s) 3, 6 and 7, unless changed by written agreement, cutting and skidding are not permitted during the period of April 1 to July 30. This restriction is because of hawk nests within the sale area. If it is determined that the hawk nests are not active, timing restriction for cutting and skidding can be waived.

##### 5.2.3.6 - Bark Beetle Restriction (1/25)

In the event drought creates a high risk of pine bark beetle infestation, pine is not to be cut during the period March 1 through July 1, unless all portions of trees greater than two (2) inches in diameter are removed from the Sale Area, reduced to chips, or treated to the satisfaction of the Unit Manager or his/her representative, within 15 days of being severed from the stump. Pine log decks, pulpwood piles and treetops that are piled for chipping in the fall or winter within a 1/4 mile of susceptible sites must be removed before March 15. Residual slash must not be placed in piles or rows and must be spread over the site for quick drying. The Department of Natural Resources will exercise this specification if the risk of damage warrants.

##### 5.2.32 - Decking/Landing Restoration (9/13)

All decking and landing areas must have the surface area restored to a condition equal to or better than before. This is to ensure the proper regeneration of the stand. Wood debris, chips and "cookies" from trimmings must be removed or scattered away from landing and loading areas and may not be windrowed on the edge.

#### 5.2.39 - ORV Trail/Route Protection (4/18)

The Pine Ridge ORV trail is shown on the Timber Sale Map. Do not damage posts with ORV markers. All stumps within five (5) feet of the trail must be cut flush with the ground. Maintain a 20-foot-wide slash, debris, and rut free zone daily using the ORV trail or route as the centerline. Do not run equipment down the ORV trail or route.

#### 5.2.40 - Pathway Protection (10/10)

The Headquarters Lake Equestrian Trail is shown on the Timber Sale Map. Do not damage pathway markers. Maintain a 20-foot-wide slash, debris, and rut free zone daily, using the pathway as the centerline. Do not run equipment down the pathway.

### 5.3 - Stream Protection

#### 5.3.2 - Parking Equipment Near Water (10/23)

Within Payment Unit(s) 1 and 9, the parking of or storage of equipment is prohibited within 100 feet of water bodies or ground water supplies. All equipment, when not in use for harvest operations, must be parked a minimum of 100 feet away from water sources (streams, rivers, lakes, ponds, vernal pools, ground water sources) and 50 feet away from slopes leading to water sources and/or riparian areas. This restriction is for preventing unforeseen oil and/or fluid leaks from contaminating water bodies and/or ground water supplies.

### 5.5 - Protection of Improvements

#### 5.5.3 - Protection of Improvements Detail (10/13)

Use caution CR 407 as there are buried phone lines with above ground junction boxes.

### 5.8 - Protection of Endangered Species

#### 5.8.5 - Protection of Raptor Nests (3/13)

Nests have been identified and buffered within Payment Units 3 and 6. All trees with raptor nests will be protected if found during harvesting operations. Notification will be made to the Unit Manager or his/her representative who will notify the Wildlife Biologist so an onsite evaluation and recommendation can be made, if necessary.

## 6 - Safety and Fire Prevention

### 6.2 - Signing

#### 6.2.1 - Road Posting (10/20)

The Purchaser is responsible for posting and maintaining caution signs on CR 407 prior to beginning operations. The road must be posted at appropriate distances from the Sale Area to warn of logging activity and truck traffic. Signs must be removed when harvest operations are suspended or completed. The Purchaser will provide these signs.

#### 6.2.3 - Recreational Trail Posting (10/20)

The Purchaser is responsible for posting and maintaining caution signs on Pine Ridge ORV Trail and Headquarters Lake Equestrian Trail prior to beginning operations. The trail must be posted at appropriate distances from the Sale Area to warn of logging activity and truck traffic at both ends of the trail. Signs must be removed when harvest operations are suspended or completed. The DNR will provide these signs.

## 7 - Other Conditions

### 7.3 - Contract Modifications

#### 7.3.3 - Modification for Reforestation (8/05)

When contractual work of Purchaser has been accepted for any Payment Unit identified on Sale Area Map, Payment Unit will be eliminated from the Sale Area on written notice so that reforestation operations can begin.

### 7.5 - Loss

#### 7.5.1 - Deteriorating Timber (7/09)

The Sale Area has received damage from some age mortality. The Purchaser should harvest the wood as soon as possible.

The Department of Natural Resources is held free of responsibility of any further damage or deterioration due to delay in harvesting.



**TIMBER SALE MAP**

This information provided by authority of Part 525, 1994 PA 451, as amended.

Sale Number <b>42-019-25</b>	Date 09/19/2025
Scale 1:11,840	Page 1
	Of 1

Forest Management Unit Newberry Mgt Unit	County Luce	Mapped By: Nick Wheeler
		Cruised By: Newberry Staff

Township 49N	Range 11W	Section(s) and Subdivision(s) Sec. 4 N1/2SE; Sec. 4 S1/2NW,S1/2NE,N1/2SW,SWSW; Sec. 5 S1/2NE,SE;
-----------------	--------------	--

Cover Type			
A = Aspen	J = Jack Pine	O = Oak	U = Upland Brush
B = Paper Birch	K = Rock	P = Lowland Poplar	UM = Upland Mix Forest
C = Cedar	L = Lowland Brush	Q = Mixed Swamp Conifer	V = Bog or Marsh
D = Treed Bog	LM = Lowland Mix Forest	R = Red Pine	W = White Pine
E = Swamp Hardwoods	M = Maple, Beech, Birch	S = Black Spruce	X = Non Stocked
F = Spruce/Fir	MC = Mixed Conifer	T = Tamarack	Y = Sand
G = Grass	MD = Mixed Deciduous	Z = Water	
H = Hemlock	N = Marsh		

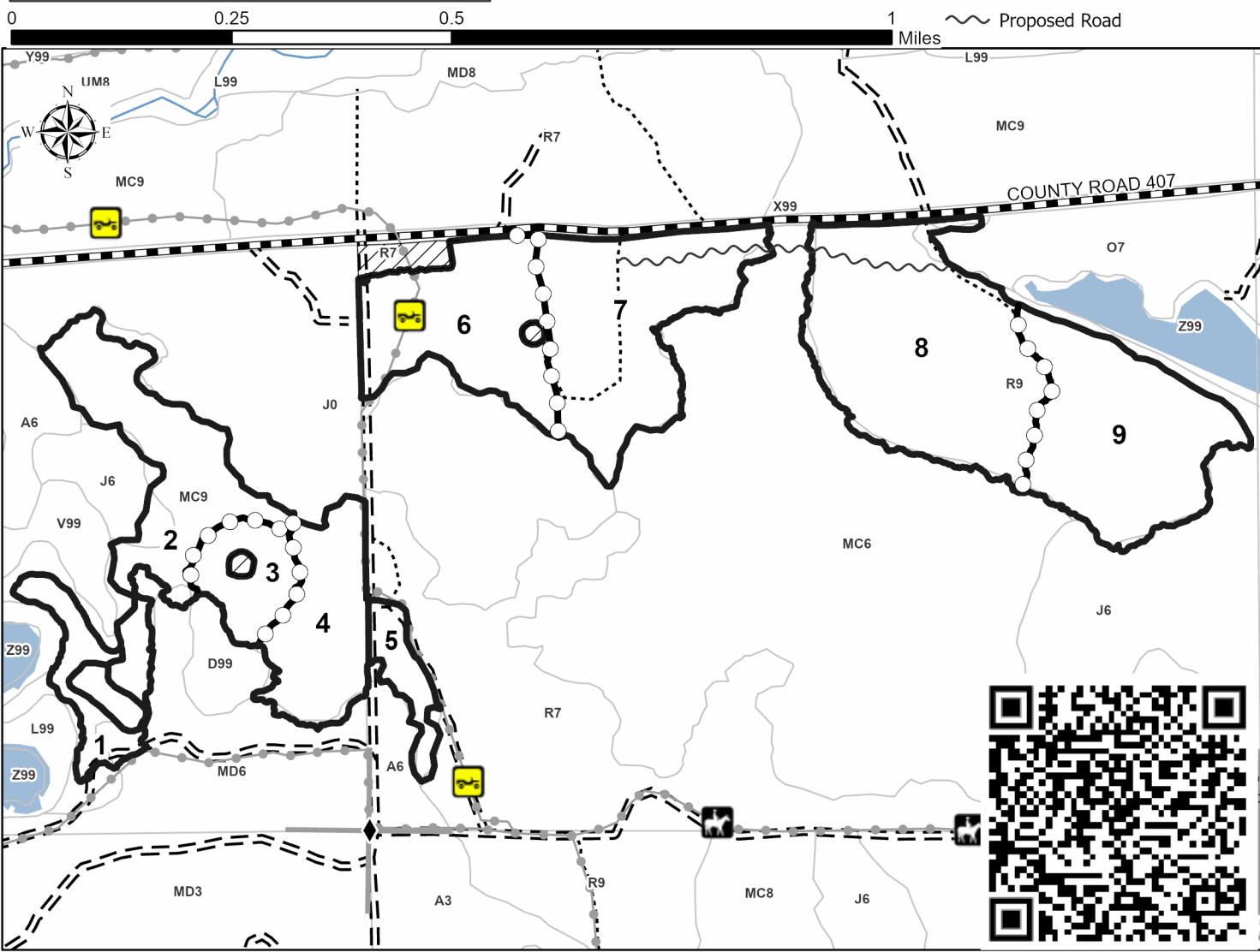
Density	
0 = Non Stocked	5 = Pole Timber Medium
1 = Seedling Sapling Poor	6 = Pole Timber Well
2 = Seedling Sapling Medium	7 = Saw Timber Poor
3 = Seedling Sapling Well	8 = Saw Timber Medium
4 = Pole Timber Poor	9 = Saw Timber Well

Payment Unit Number	Acres	Payment Unit Number	Acres
1	6.4	6	20.4
2	22.8	7	27.1
3	7.5	8	37.7
4	14.6	9	26.9
5	4.6		

**Don't Look  
Up Pine**  
**167.9 Acres**

**Legend**

- Against State (Red)
- Payment Unit (Purple)
- Equestrian
- ORV Route
- Field Grade Corner
- Retention
- Proposed Road





Rainy Lake Heartbreak (42-009-25)  
T49N, R11W, SEC. 5; T49N, R11W, SEC. 6; Luce COUNTY

In response to the notice of sale to be held 3:00 p.m. (local time) on June 4, 2026, I am hereby submitting my sealed bid ( firm offer) for the following forest products to be cut. Bids for individual species must be at or above the advertised price. All non-responsive bid forms may be rejected.

<u>PRODUCTS &amp; SPECIES</u>	<u>ESTIMATED VOLUME*</u>	<u>ADVERTISED PRICE</u>	<u>BID PRICE/UNIT</u>
Pulpwood			
B. T. Aspen	21 Cords	\$ 12.00/Cord	\$ _____
Balsam Fir	7 Cords	\$ 4.50/Cord	\$ _____
Jack Pine	36 Cords	\$ 14.25/Cord	\$ _____
Red Maple	8 Cords	\$ 6.35/Cord	\$ _____
Red Pine	431 Cords	\$ 48.35/Cord	\$ _____
White Pine	20 Cords	\$ 11.85/Cord	\$ _____

\*The volumes are statistically estimated within plus (+) or minus (-) 20.21 percent at 95% confidence level. These estimated volumes are final and not subject to adjustment. Prospective bidders are urged to examine this timber and to make their own estimates of quantity and quality.

I understand that any or all bids may be rejected. All bids must be signed and all bid items must be bid or the bid form may be rejected. I also understand that consideration and awarding a contract will be based upon my past performance and ability to complete the contract based upon equipment and staffing subject to my control.

FEDERAL ID: \_\_\_\_ - \_\_\_\_ - \_\_\_\_ or SOCIAL SECURITY NUMBER: \_\_\_\_ - \_\_\_\_ - \_\_\_\_

Company or individual bidding: \_\_\_\_\_

Company representative's name: \_\_\_\_\_

Address: \_\_\_\_\_

City: \_\_\_\_\_ State: \_\_\_\_\_ Zip: \_\_\_\_\_

IF AVAILABLE, PLEASE PLACE THE PERSONALIZED LABEL FROM YOUR PROSPECTUS IN THE ABOVE BOX.

Individual or company representative's signature: \_\_\_\_\_ Date: \_\_\_\_\_

Phone number : \_\_\_\_\_ Email (optional): \_\_\_\_\_

**THE WINNING BIDDER MUST COMPLETE THE VERIFICATION OF WORKER'S DISABILITY COMPENSATION ACT COMPLIANCE (ON REVERSE SIDE IF DOUBLE SIDED) WITHIN 21 DAYS OF SALE AWARD DATE**



FOR DEPARTMENT USE ONLY	
Sale Number (XX - XXX - XX - XX)	
Forest Management Unit:	

# TIMBER SALE VERIFICATION OF WORKER'S DISABILITY COMPENSATION ACT COMPLIANCE

As required by Act 317, P.A. 1969 (Worker's Compensation) and  
Part 5 of Act 451 of 1994, as amended.

## VERIFICATION OF WORKER'S DISABILITY COMPENSATION ACT COMPLIANCE

- This verification must be completed and submitted within 21 days of contract award and prior to the issuance of the timber sale contract.
- In addition, if boxes 2B or 2C are checked, then Notice of Exclusion or Certificate of Insurance must be submitted within twenty-one (21) days of the contract award and prior to the issuance of the timber sale contract.
- All information must be typed or printed except for written signatures.

Please Check Appropriate Categories:

1. My business is organized as (you **must** check one of the boxes below):
  - A.  Sole Proprietorship (individual)
  - B.  Partnership
  - C.  Corporation
2. You **must** check one of the boxes below:
  - A.  I certify my business is a sole proprietorship and it has no employees but the sole proprietor. I am not subject to the Worker's Compensation Laws.
  - B.  I certify my business has satisfied its obligation to the Worker's Compensation Act through the use of an approved Notice of Exclusion (BWC-337, Rev. 5/96). I will provide a copy of the Notice of Exclusion within 21 days of the contract award. (For questions or a copy of the BWC-337, please call the Worker's Compensation Bureau at 517 -322-1195).
  - C.  I certify my business has a Worker's Compensation Policy. I will provide an original Certificate of Insurance within twenty-one (21) days of the contract award.
3. If you have checked item 2(A) or 2(B), you **must** indicate the number of **both** full-time and part-time employees, other than yourself, including family members and active partners (if none, you must enter "0").

\_\_\_\_\_ Full-time Employees

\_\_\_\_\_ Part-time Employees

Name of Business		Federal ID (or) Social Security No.	
Address		Telephone (       )	
City	State	ZIP	

*I hereby certify that the above information is true and correct. I agree to notify the Michigan DNR of any changes that occur in factors affecting my coverage during any of my present and future operations.*

\_\_\_\_\_  
Signature of Owner or Authorized Representative

\_\_\_\_\_  
Title

\_\_\_\_\_  
Date

Please complete the "SEALED BID" information on the next page

Westbound And Down (42-015-25)

T49N, R11W, SEC. 6; T49N, R11W, SEC. 7; T49N, R11W, SEC. 8; Luce COUNTY

In response to the notice of sale to be held 3:00 p.m. (local time) on June 4, 2026, I am hereby submitting my sealed bid ( firm offer) for the following forest products to be cut. Bids for individual species must be at or above the advertised price. All non-responsive bid forms may be rejected.

<u>PRODUCTS &amp; SPECIES</u>	<u>ESTIMATED VOLUME*</u>	<u>ADVERTISED PRICE</u>	<u>BID PRICE/UNIT</u>
<u>Pulpwood</u>			
B. T. Aspen	10 Cords	\$ 12.00/Cord	\$ _____
Balsam Fir	10 Cords	\$ 4.50/Cord	\$ _____
Black Spruce	2 Cords	\$ 3.00/Cord	\$ _____
Hemlock	3 Cords	\$ 3.95/Cord	\$ _____
Jack Pine	3 Cords	\$ 14.25/Cord	\$ _____
Mixed Hardwood	133 Cords	\$ 6.35/Cord	\$ _____
Red Pine	1,668 Cords	\$ 48.35/Cord	\$ _____
White Pine	424 Cords	\$ 11.85/Cord	\$ _____

\*The volumes are statistically estimated within plus (+) or minus (-) 8.62 percent at 95% confidence level. These estimated volumes are final and not subject to adjustment. Prospective bidders are urged to examine this timber and to make their own estimates of quantity and quality.

I understand that any or all bids may be rejected. All bids must be signed and all bid items must be bid or the bid form may be rejected. I also understand that consideration and awarding a contract will be based upon my past performance and ability to complete the contract based upon equipment and staffing subject to my control .

FEDERAL ID: \_\_\_\_ - \_\_\_\_ - \_\_\_\_ or SOCIAL SECURITY NUMBER: \_\_\_\_ - \_\_\_\_ - \_\_\_\_

Company or individual bidding: \_\_\_\_\_

Company representative's name: \_\_\_\_\_

Address: \_\_\_\_\_

City: \_\_\_\_\_ State: \_\_\_\_\_ Zip: \_\_\_\_\_

IF AVAILABLE, PLEASE PLACE THE PERSONALIZED LABEL FROM YOUR PROSPECTUS IN THE ABOVE BOX.

Individual or company representative's signature: \_\_\_\_\_ Date: \_\_\_\_\_

Phone number : \_\_\_\_\_ Email (optional): \_\_\_\_\_

**THE WINNING BIDDER MUST COMPLETE THE VERIFICATION OF WORKER'S DISABILITY COMPENSATION ACT COMPLIANCE (ON REVERSE SIDE IF DOUBLE SIDED) WITHIN 21 DAYS OF SALE AWARD DATE**



FOR DEPARTMENT USE ONLY	
Sale Number (XX - XXX - XX - XX)	
Forest Management Unit:	

## TIMBER SALE VERIFICATION OF WORKER'S DISABILITY COMPENSATION ACT COMPLIANCE

As required by Act 317, P.A. 1969 (Worker's Compensation) and  
Part 5 of Act 451 of 1994, as amended.

### VERIFICATION OF WORKER'S DISABILITY COMPENSATION ACT COMPLIANCE

- This verification must be completed and submitted within 21 days of contract award and prior to the issuance of the timber sale contract.
- In addition, if boxes 2B or 2C are checked, then Notice of Exclusion or Certificate of Insurance must be submitted within twenty-one (21) days of the contract award and prior to the issuance of the timber sale contract.
- All information must be typed or printed except for written signatures.

Please Check Appropriate Categories:

1. My business is organized as (you **must** check one of the boxes below):
  - A.  Sole Proprietorship (individual)
  - B.  Partnership
  - C.  Corporation
2. You **must** check one of the boxes below:
  - A.  I certify my business is a sole proprietorship and it has no employees but the sole proprietor. I am not subject to the Worker's Compensation Laws.
  - B.  I certify my business has satisfied its obligation to the Worker's Compensation Act through the use of an approved Notice of Exclusion (BWC-337, Rev. 5/96). I will provide a copy of the Notice of Exclusion within 21 days of the contract award. (For questions or a copy of the BWC-337, please call the Worker's Compensation Bureau at 517 -322-1195).
  - C.  I certify my business has a Worker's Compensation Policy. I will provide an original Certificate of Insurance within twenty-one (21) days of the contract award.
3. If you have checked item 2(A) or 2(B), you **must** indicate the number of **both** full-time and part-time employees, other than yourself, including family members and active partners (if none, you must enter "0").

\_\_\_\_\_ Full-time Employees

\_\_\_\_\_ Part-time Employees

Name of Business		Federal ID (or) Social Security No.	
Address		Telephone (       )	
City	State	ZIP	

*I hereby certify that the above information is true and correct. I agree to notify the Michigan DNR of any changes that occur in factors affecting my coverage during any of my present and future operations.*

\_\_\_\_\_  
Signature of Owner or Authorized Representative

\_\_\_\_\_  
Title

\_\_\_\_\_  
Date

Please complete the "SEALED BID" information on the next page

Don't Look Up Pine (42-019-25)  
T49N, R11W, SEC. 4; T49N, R11W, SEC. 5; Luce COUNTY

In response to the notice of sale to be held 3:00 p.m. (local time) on June 4, 2026, I am hereby submitting my sealed bid ( firm offer) for the following forest products to be cut. Bids for individual species must be at or above the advertised price. All non-responsive bid forms may be rejected.

<u>PRODUCTS &amp; SPECIES</u>	<u>ESTIMATED VOLUME*</u>	<u>ADVERTISED PRICE</u>	<u>BID PRICE/UNIT</u>
<u>Pulpwood</u>			
Balsam Fir	32 Cords	\$ 4.20/Cord	\$ _____
Black Spruce	13 Cords	\$ 2.80/Cord	\$ _____
Jack Pine	117 Cords	\$ 13.30/Cord	\$ _____
Mixed Aspen	137 Cords	\$ 11.20/Cord	\$ _____
Paper Birch	39 Cords	\$ 1.25/Cord	\$ _____
Red Maple	57 Cords	\$ 5.95/Cord	\$ _____
Red Pine	1,490 Cords	\$ 45.10/Cord	\$ _____
White Pine	287 Cords	\$ 11.05/Cord	\$ _____

\*The volumes are statistically estimated within plus (+) or minus (-) 10.40 percent at 95% confidence level. These estimated volumes are final and not subject to adjustment. Prospective bidders are urged to examine this timber and to make their own estimates of quantity and quality.

I understand that any or all bids may be rejected. All bids must be signed and all bid items must be bid or the bid form may be rejected. I also understand that consideration and awarding a contract will be based upon my past performance and ability to complete the contract based upon equipment and staffing subject to my control .

FEDERAL ID: \_\_\_\_ - \_\_\_\_ - \_\_\_\_ or SOCIAL SECURITY NUMBER: \_\_\_\_ - \_\_\_\_ - \_\_\_\_

Company or individual bidding: \_\_\_\_\_

Company representative's name: \_\_\_\_\_

Address: \_\_\_\_\_

City: \_\_\_\_\_ State: \_\_\_\_\_ Zip: \_\_\_\_\_

IF AVAILABLE, PLEASE PLACE THE PERSONALIZED LABEL FROM YOUR PROSPECTUS IN THE ABOVE BOX.

Individual or company representative's signature: \_\_\_\_\_ Date: \_\_\_\_\_

Phone number : \_\_\_\_\_ Email (optional): \_\_\_\_\_

**THE WINNING BIDDER MUST COMPLETE THE VERIFICATION OF WORKER'S DISABILITY COMPENSATION ACT COMPLIANCE (ON REVERSE SIDE IF DOUBLE SIDED) WITHIN 21 DAYS OF SALE AWARD DATE**



FOR DEPARTMENT USE ONLY	
Sale Number (XX - XXX - XX - XX)	
Forest Management Unit:	

## TIMBER SALE VERIFICATION OF WORKER'S DISABILITY COMPENSATION ACT COMPLIANCE

As required by Act 317, P.A. 1969 (Worker's Compensation) and  
Part 5 of Act 451 of 1994, as amended.

### VERIFICATION OF WORKER'S DISABILITY COMPENSATION ACT COMPLIANCE

- This verification must be completed and submitted within 21 days of contract award and prior to the issuance of the timber sale contract.
- In addition, if boxes 2B or 2C are checked, then Notice of Exclusion or Certificate of Insurance must be submitted within twenty-one (21) days of the contract award and prior to the issuance of the timber sale contract.
- All information must be typed or printed except for written signatures.

Please Check Appropriate Categories:

1. My business is organized as (you **must** check one of the boxes below):
  - A.  Sole Proprietorship (individual)
  - B.  Partnership
  - C.  Corporation
2. You **must** check one of the boxes below:
  - A.  I certify my business is a sole proprietorship and it has no employees but the sole proprietor. I am not subject to the Worker's Compensation Laws.
  - B.  I certify my business has satisfied its obligation to the Worker's Compensation Act through the use of an approved Notice of Exclusion (BWC-337, Rev. 5/96). I will provide a copy of the Notice of Exclusion within 21 days of the contract award. (For questions or a copy of the BWC-337, please call the Worker's Compensation Bureau at 517 -322-1195).
  - C.  I certify my business has a Worker's Compensation Policy. I will provide an original Certificate of Insurance within twenty-one (21) days of the contract award.
3. If you have checked item 2(A) or 2(B), you **must** indicate the number of **both** full-time and part-time employees, other than yourself, including family members and active partners (if none, you must enter "0").

\_\_\_\_\_ Full-time Employees

\_\_\_\_\_ Part-time Employees

Name of Business		Federal ID (or) Social Security No.	
Address		Telephone (       )	
City	State	ZIP	

*I hereby certify that the above information is true and correct. I agree to notify the Michigan DNR of any changes that occur in factors affecting my coverage during any of my present and future operations.*

\_\_\_\_\_  
Signature of Owner or Authorized Representative

\_\_\_\_\_  
Title

\_\_\_\_\_  
Date

Please complete the "SEALED BID" information on the next page