



**DEPARTMENT OF NATURAL RESOURCES
STATE OF MICHIGAN
TIMBER SALE PROSPECTUS #7721**

SCHEDULED SALE DATE AND TIME: 2:00 p.m. (local time) on October 8, 2025.

LOCATION: SHINGLETON MGMT UNIT, PO BOX 67, M 28 WEST, SHINGLETON, MI 49884.

PROSPECTUS NOTE: The bidder is advised to inspect the sale area and review the location, estimated volumes, operating costs and contract terms of proposed sales. Please be aware that some landowners may request 60 days or more notice for access across their land.

Notice is hereby given that bids will be received by the Unit Manager, SHINGLETON MANAGEMENT UNIT, for certain timber on the following described lands:

C-174 Contract Hardwood (41-020-24) / T47N, R17W, SEC. 4 , SWSW.

T47N, R17W, SEC. 5 , NW,W1/2NE,N1/2SW,N1/2SE,SESE.

T47N, R17W, SEC. 6 , SENE.

T47N, R17W, SEC. 7 , NW,NE.

T47N, R17W, SEC. 8 , SWNW,NENE.

Alger County, Advertised Price \$336,507.20, 386.0 Acres, Hardwood, Sugar Maple.

SALE NOTE: The road between Payment Units 10 and 11 will require a culvert replacement. See Sale Spec 4.1.5 for details.

The County must be contacted prior to crossing or harvesting in the County Road R-O-W. This applies to Payment Units 4, 6 and 12.

Permission for access across private land to access Payment Units 1 and 2 is the responsibility of the Purchaser. A copy of the written permission from the private landowner may be required.

Within Payment Unit(s) 1-12, harvesting is not permitted during the period of April 15 to July 15 because of bark slippage.

Access may be through private land.

C-169 Contract Hardwood (41-169-24) / T48N, R17W, SEC. 33, SENE,NESE.

T48N, R17W, SEC. 34, N1/2SW,SESW,W1/2SE.

T48N, R17W, SEC. 35, SENW,E1/2NE,E1/2SW,SE.

Alger County, Advertised Price \$99,527.50, 332.1 Acres, Hardwood, Sugar Maple.

SALE NOTE: Permission for access across private land is the responsibility of the Purchaser. See Sale Spec 4.4.1 for details.

Within Payment Unit(s) 1-10, harvesting is not permitted during the period of April 15 to July 15 because of bark slippage.

Access may be through private land.

BID INSTRUCTIONS (VER. 10/10/2022):

1. Scheduled Bid Location, Date, and Time (2/11)

Bids must be received by the Unit Manager, SHINGLETON OFFICE, PO Box 67 M 28 West, Shingleton, MI 49884, no later than 2:00 p.m. (local time) on October 8, 2025. For further information concerning this sale, contact Robert Burnham at 906-420-1645 extension n/a.

2. Bidder's Qualifications (10/22)

If all or part of a timber sale was prepared by a private contractor, the contractor and that contractor's company are not permitted to bid on the timber sale. A person must be 18 years of age or older to purchase timber. Permanent employees of the Department of Natural Resources or members of their immediate household may not bid. Former employees, in the permanent or seasonal class, may not bid until 3 months after the last day of active duty. Bids will not be accepted from individuals or companies appearing on the DNR/FRD No-Bid List. This list contains the names of purchasers who previously failed to execute a contract within 21-days or who have a history of poor performance.

3. Preparation of Sealed Bids (5/16)

Bid Forms may be completed online thru Michigan DNR Timber Sale Online Bidding (OLB) at www.michigan.gov/timberbidding or by completing the hardcopy Bid Form found in the Timber Sale Prospectus. Hardcopy Bid Forms shall be manually signed in ink. Registration in OLB is considered your 'signature' for all bids submitted thru that system. Bid prices must be entered for each species and product in the Bid Price column for all material subject to bidding and all fill-in blanks must be completed. If erasures or other changes appear on the hardcopy Bid Form, each erasure or change must be initialed by the person signing the bid.

4. Submission of Sealed Bids (5/16)

Bid forms may be obtained from the Unit Manager or thru OLB. Bids may be submitted hardcopy or thru OLB. All hardcopy bids must be submitted on the bid form and in an envelope clearly identified as described in this section. NOTE: Only one bid form per bid envelope. Sealed bids must be submitted to the Unit office designated in the prospectus and must be submitted at or prior to the time established in the prospectus. The envelope should show on the outside (a) the sale name or number and (b) the date and time of bid opening, as shown in the prospectus. Bids received after the time specified in the sale prospectus are late bids and will be rejected.

It is possible for a bidder to submit multiple bids on a single sale. For example, a bid may be submitted hardcopy and a bid may be submitted thru OLB. Or, two bidders from the same company could both submit bids on the same sale. If this were to happen, the State would accept all bids received and award the contract accordingly. All bidding and contractual requirements would apply to all bids received.

5. Public Opening of Sealed Bids (7/16)

If conditions permit, the sealed bids will be publicly opened and posted at the time and place set in the prospectus.

If a bidder, present at a bid opening, has submitted bids on more than one sale, that bidder may withdraw their unopened bid envelopes or announce the withdrawal of their online bid after being declared the successful bidder on one sale.

6. Award of Contract (1/11)

Award of the contract will be made to the Bidder whose bid, conforming to the prospectus, is most advantageous to the State of Michigan on the basis of total value at rates bid for the estimated quantities. The State reserves the right to reject any bid or waive any minor irregularity in bids received. A written award mailed (or otherwise furnished) to the successful Bidder shall be deemed to result in a binding contract without further action by either party.

7. Down Payment (1/11)

The Bidder to whom award is made must make a down payment within 21 days of the sale award. The amount of the down payment will be calculated as shown in the Bond and Payment Schedule of this prospectus. Only cash may be used to meet this requirement.

8. Performance Security (1/11)

As guarantee of faithful performance, a cash bond, certificate of deposit, surety bond or irrevocable letter of credit (LOC) is required within 21 days of the sale award. The amount of the performance security is shown in the Bond and

Payment Schedule of this prospectus. If an LOC or surety is used, the coverage must extend for at least 6 months beyond the contract expiration.

9. Worker's Compensation (10/22)

Purchaser shall obtain worker's compensation insurance to cover claims under Michigan's Worker's Disability Compensation Act of 1969 or similar employee benefit act of any other state applicable to an employee. Verification of Worker's Disability Compensation Act Compliance must be completed and submitted within 21 days of contract award and prior to the issuance of the timber sale contract. In addition, if applicable, Notice of Exclusion or Certificate of Insurance must also be submitted.

10. Timber Sale Contract (10/22)

Additional conditions and requirements common to all timber sales are listed on the timber sale contract (R4031) and are available on line at www.michigan.gov/timber. Contact the Unit Manager for additional information or a sample contract. Within 21 days of the date of the award letter, the bidder must sign the contract and provide the required down payment, performance security, and verification of worker's disability compensation. The down payment and performance security shall be in accordance with the provisions of the timber sale contract, in the sums stated in this prospectus. If these actions are not taken, then the Bidder, the Bidder's corporation, and the corporation's principals may not be permitted to bid on State timber sales for a period of 3 months after the first offense, 6 months after the second offense, and 1 year after the third offense. An offense will only be counted against the Bidder for 5 years. In addition, the Bidder certifies that if awarded this contract, the Bidder will complete the timber sale contract in accordance with its terms and any modifications thereof including requirements to purchase, cut, and remove the included timber by the expiration date.

Payment Unit values in the State Forest Timber Sale Contract are calculated based on the advertised value of the Payment Unit as a percentage of the total advertised value of the contract. The advertised value of each Payment Unit is given in the Description of Timber by Payment Unit table on the Timber Sale Information page. For example, if the value of Payment Unit 1 is advertised as \$1,500 and the total Timber Sale value is advertised as \$10,000, the contract price for Payment Unit 1 will be 15% of the total bid price ($\$1,500/\$10,000 * 100$).

11. Disclaimer of Estimates and Bidder's Warranty of Inspection (10/22)

Before submitting this bid, the Bidder is advised and cautioned to inspect the sale area, review the requirements of the sale contract, and take other steps as may be reasonably necessary to ascertain the location, estimated volumes, construction estimates, and operating costs of the proposed sale. Failure to do so will not relieve the Bidder from responsibility for completing the contract.

The Bidder warrants that this bid is submitted solely on the basis of the Bidder's examination and inspection of the quality and quantity of the timber offered for sale and the Bidder's opinion of the value thereof and the costs of recovery. No reliance should be placed on the State of Michigan's estimates of timber quality, quantity or costs of recovery. Bidder further acknowledges that the State of Michigan: (i) expressly disclaims any warranty of fitness of timber for any purpose; (ii) offers this timber as is without any warranty of quality (merchantability) or quantity and (iii) expressly disclaims any warranty as to the quantity or quality of timber sold.

12. Certification and Chain-of-Custody (10/22)

Unless otherwise indicated in the contract under section 7 – Other Conditions of the Sale Specific Conditions & Requirements, the area encompassed by this timber sale is certified to the standards of the Forest Stewardship Council (FSC) - Certificate #SCS-FM/COC-00090N and the Sustainable Forestry Initiative (SFI) - Certificate #NSF-SFIS-5Y031-SF5. Forest products from this sale may be delivered to the mill as "FSC 100% and / or SFI certified" as long as the contractor hauling the forest products is chain-of-custody (COC) certified or covered under a COC certificate from the destination mill. The purchaser is responsible for maintaining COC after leaving the sale area.

13. Good Neighbor Authority (GNA) Requirements (10/22)

If the name of this timber sales contains the acronym GNA, it is authorized by the Good Neighbor Authority (GNA) and covered by various agreements between the U.S. Forest Service and the State. The timber sale occurs on federal land and the following conditions apply:

GNA contracts on US Forest Service land will not be awarded to purchasers on the Federal list of excluded parties. The System for Award Management (SAM) will be checked for active excluded parties prior to award of contract. In

addition, the Bidder to whom award is made must complete an Assurance Regarding Felony Conviction or Tax Delinquent Status for Corporate Applicants (AD-3031).

14. Good Neighbor Authority (GNA) Requirements, con't (10/22)

Bidder certifies, by signing this bid form, that to the best of Bidder's knowledge that the following representations are accurate and complete.

- a. That the Bidder and its principals are not presently debarred, suspended, proposed for debarment, declared ineligible, or voluntary excluded from timber sales (covered transactions) by any Federal department or agency.
- b. That the Bidder and its principals have not within a 3-year period preceding this bid been convicted of or had a civil judgment rendered against them for commission of fraud or a criminal offense in connection with obtaining , attempting to obtain, or performing a public (Federal, State, or local) transaction or contract under a public transaction; violation of Federal or State antitrust statutes or commission of embezzlement, theft, forgery, bribery, falsification or destruction of records, making false statements, or receiving stolen property.
- c. That the Bidder and its principals are not presently indicted for or otherwise criminally or civilly charged by a governmental entity (Federal, State, or local) with commission of any of the offenses enumerated in paragraph b of this certification.
- d. That the Bidder and its principals have not within a 3-year period preceding this bid had one or more public transactions (Federal, State, or local) terminated for breach or default of a timber or forest product contract.

Bidders that cannot certify this requirement, in whole or in part, shall submit an explanation with their bid.

Scott Bowen
Director

TIMBER SALE INFORMATION

C-174 Contract Hardwood (41-020-24)

T47N, R17W, SEC. 4; T47N, R17W, SEC. 5; T47N, R17W, SEC. 6; T47N, R17W, SEC. 7; T47N, R17W, SEC. 8.
Alger County (Advertised Price \$336,507.20)

SALE NOTE: The road between Payment Units 10 and 11 will require a culvert replacement. See Sale Spec 4.1.5 for details.

The County must be contacted prior to crossing or harvesting in the County Road R-O-W. This applies to Payment Units 4, 6 and 12.

Permission for access across private land to access Payment Units 1 and 2 is the responsibility of the Purchaser. A copy of the written permission from the private landowner may be required.

Within Payment Unit(s) 1-12, harvesting is not permitted during the period of April 15 to July 15 because of bark slippage.

Access may be through private land.

A timber sale contract for this lump sum, sealed bid timber sale will be awarded to the responsible bidder offering the highest sealed bid price. All units of volume listed below were estimated using the Inventory Manager computer program and the new Michigan taper model. Bids must be at or above the following advertised price for each product and species:

<u>PRODUCTS & SPECIES</u>	<u>ESTIMATED UNITS*</u>	<u>ADVERTISED PRICE</u>
Sawtimber		
Basswood	22.5 MBF	\$ 86.00 / MBF
Black Cherry	3.3 MBF	\$ 107.00 / MBF
Paper Birch	2.3 MBF	\$ 79.00 / MBF
Red Maple	56.2 MBF	\$ 136.00 / MBF
Sugar Maple	695.9 MBF	\$ 343.00 / MBF
Yellow Birch	2.6 MBF	\$ 69.00 / MBF
Pulpwood		
Balsam Fir	198 Cords	\$ 16.60 / Cord
Mixed Aspen	13 Cords	\$ 30.50 / Cord
Mixed Hardwood	3,716 Cords	\$ 22.50 / Cord
Mixed Spruce	34 Cords	\$ 6.70 / Cord

* The total volume is statistically estimated within plus (+) or minus (-) 6.72 percent. There are an estimated 5,795 cords on this timber sale, plus or minus 390 cords at the 95% confidence level. The estimated units are final and not subject to adjustment. Prospective bidders are urged to examine this timber and to make their own estimates of quantity and quality.

BOND AND PAYMENT SCHEDULE:

1. A bond in the amount of \$16,825.00 to insure faithful performance of the conditions of the contract will be deposited by the successful bidder within 21 days of the sale award.
2. Cutting in any sale or unit without the required advance payment would be considered a trespass.
3. Total payment must be paid in advance or according to the following schedule:
 - (a) Ten percent (10%) of the sale value must be paid within 21 days of the sale award.
 - (b) The 10% down payment will be credited towards the first unit cut.
 - (c) Payment for each of the following units must be made before cutting begins in that unit:

<u>PAYMENT UNIT NUMBER</u>	<u>PERCENT OF TOTAL SALE VALUE</u>
01	5.7%
02	8.2%
03	4.7%
04	6.3%
05	8.4%
06	10.8%
07	11.0%
08	8.7%
09	11.4%
10	8.0%
11	9.7%
12	7.1%

4. If no cutting takes place, the 10% down payment will not be refunded.
5. Operations on the contract issued will terminate on 06/30/2029.

SALE STATISTICS

Volumes were calculated in cubic feet using the Michigan taper model. Cubic foot volume includes all wood inside bark for the product indicated. For display purposes, cubic feet were converted to cords and MBF using a simple conversion factor, e.g. 79 cubic feet per cord and 185 cubic feet per MBF. The cubic foot volumes are precise; the cords and MBF volumes are not. Cubic foot volume cannot be directly converted to cords or boards with precision.

SALE VOLUMES

The total estimated sale volume may not equal the sum of the species/products due to the nature of statistical calculations associated with double sampling methodology.

VOLUME			STATISTICAL RANGE IN CORDS	
TOTAL CUBIC FEET	TOTAL CORDS	PERCENT ERROR	MINIMUM	MAXIMUM
457,778	5,795	6.72%	5,405	6,184

VDU VOLUMES

A VDU is a Volume Determination Unit. Volumes and their associated statistics are calculated at the VDU level and summarized to the sale level. There is often a one to one relationship between a VDU and a Payment Unit, but not always, depending on the cruise design. Refer to the VDU TO PAYMENT UNIT table.

	VOLUME			RANGE IN CORDS	
VDU	TOTAL CUBIC FEET	TOTAL CORDS	PERCENT ERROR	MINIMUM	MAXIMUM
1	50,609	641	17.98%	525	756
2	62,291	788	18.55%	642	935
3	87,319	1,105	14.75%	942	1,268
4	164,582	2,083	11.64%	1,841	2,326
5	92,977	1,177	15.66%	993	1,361
TOTAL:	457,778	5,795		4,943	6,646

VDU TO PAYMENT UNIT

When a VDU is associated with more than one Payment Unit (PU), the VDU volumes are assigned to the PU based on acres of the VDU within the PU.

VDU	VDU ACRES	PU	PU ACRES
TOTAL:			

DESCRIPTION OF TIMBER BY PAYMENT UNIT (PU)

PU	MARKET GROUP	PRODUCT	QUANTITY	UNIT	ACRES	ADVERTISE PRICE
1	Basswood	Sawtimber	0.5	MBF	19.3	\$19,237.70
	Red Maple		0.9	MBF		
	Sugar Maple		45.8	MBF		
	Balsam Fir	Pulpwood	7	Cords		
	Mixed Hardwood		144	Cords		
	<i>Basswood</i>		1	<i>Cords</i>		
	<i>Red Maple</i>		7	<i>Cords</i>		
	<i>Sugar Maple</i>		136	<i>Cords</i>		
	Mixed Spruce		1	Cords		
	<i>White Spruce</i>		1	<i>Cords</i>		
2	Basswood	Sawtimber	0.8	MBF	27.8	\$27,693.10
	Red Maple		1.4	MBF		
	Sugar Maple		65.9	MBF		
	Balsam Fir	Pulpwood	10	Cords		
	Mixed Hardwood		207	Cords		
	<i>Basswood</i>		1	<i>Cords</i>		
	<i>Red Maple</i>		11	<i>Cords</i>		
	<i>Sugar Maple</i>		195	<i>Cords</i>		
	Mixed Spruce		1	Cords		
	<i>White Spruce</i>		1	<i>Cords</i>		
3	Basswood	Sawtimber	0.9	MBF	20.6	\$15,842.40
	Black Cherry		0.7	MBF		
	Red Maple		5.2	MBF		
	Sugar Maple		27.4	MBF		
	Balsam Fir	Pulpwood	19	Cords		
	Mixed Hardwood		233	Cords		
	<i>Basswood</i>		3	<i>Cords</i>		
	<i>Beech</i>		11	<i>Cords</i>		
	<i>Black Cherry</i>		2	<i>Cords</i>		
	<i>Ironwood</i>		1	<i>Cords</i>		
	<i>Red Maple</i>		60	<i>Cords</i>		
	<i>Sugar Maple</i>		156	<i>Cords</i>		
	Mixed Spruce		4	Cords		
	<i>Black Spruce</i>		2	<i>Cords</i>		
	<i>White Spruce</i>		2	<i>Cords</i>		
4	Basswood	Sawtimber	1.3	MBF	27.8	\$21,354.60
	Black Cherry		1.0	MBF		
	Red Maple		7.1	MBF		
	Sugar Maple		36.9	MBF		
	Balsam Fir	Pulpwood	25	Cords		
	Mixed Hardwood		314	Cords		
	<i>Basswood</i>		4	<i>Cords</i>		
	<i>Beech</i>		14	<i>Cords</i>		
	<i>Black Cherry</i>		3	<i>Cords</i>		
	<i>Ironwood</i>		1	<i>Cords</i>		
	<i>Red Maple</i>		82	<i>Cords</i>		
	<i>Sugar Maple</i>		210	<i>Cords</i>		
	Mixed Spruce		5	Cords		
	<i>Black Spruce</i>		3	<i>Cords</i>		
	<i>White Spruce</i>		2	<i>Cords</i>		
5	Basswood	Sawtimber	2.1	MBF	31.2	\$28,280.30
	Black Cherry		0.2	MBF		
	Red Maple		3.9	MBF		
	Sugar Maple		59.2	MBF		
	Balsam Fir	Pulpwood	31	Cords		
	Mixed Aspen		2	Cords		

DESCRIPTION OF TIMBER BY PAYMENT UNIT (PU), CON'T

PU	MARKET GROUP	PRODUCT	QUANTITY	UNIT	ACRES	ADVERTISE PRICE				
5 con't	<i>Quaking Aspen</i>	<i>Pulpwood</i>	2	<i>Cords</i>						
	Mixed Hardwood		296	Cords						
	<i>Basswood</i>		1	<i>Cords</i>						
	<i>Black Cherry</i>		1	<i>Cords</i>						
	<i>Ironwood</i>		3	<i>Cords</i>						
	<i>Red Maple</i>		44	<i>Cords</i>						
	<i>Sugar Maple</i>		247	<i>Cords</i>						
	Mixed Spruce		1	Cords						
	<i>White Spruce</i>		1	<i>Cords</i>						
6	Basswood	Sawtimber	2.8	MBF	40.1	\$36,461.10				
	Black Cherry		0.3	MBF						
	Red Maple	5.1	MBF							
	Sugar Maple	76.2	MBF							
	Balsam Fir	Pulpwood	41	Cords						
	Mixed Aspen		3	Cords						
	<i>Quaking Aspen</i>		3	<i>Cords</i>						
	Mixed Hardwood		381	Cords						
	<i>Basswood</i>		2	<i>Cords</i>						
	<i>Black Cherry</i>		1	<i>Cords</i>						
	<i>Ironwood</i>		4	<i>Cords</i>						
	<i>Red Maple</i>		56	<i>Cords</i>						
	<i>Sugar Maple</i>		318	<i>Cords</i>						
	Mixed Spruce		2	Cords						
	<i>White Spruce</i>		2	<i>Cords</i>						
	7		Basswood	Sawtimber			3.6	MBF	40.3	\$36,948.80
			Paper Birch				0.1	MBF		
			Red Maple	3.8			MBF			
			Sugar Maple	80.5			MBF			
Yellow Birch			0.5	MBF						
Balsam Fir			Pulpwood	10	Cords					
Mixed Hardwood		369		Cords						
<i>Basswood</i>		4		<i>Cords</i>						
<i>Beech</i>		16		<i>Cords</i>						
<i>Ironwood</i>		1		<i>Cords</i>						
<i>Paper Birch</i>		1		<i>Cords</i>						
<i>Red Maple</i>		33		<i>Cords</i>						
<i>Sugar Maple</i>		313		<i>Cords</i>						
<i>Yellow Birch</i>		1		<i>Cords</i>						
8		Basswood		Sawtimber	2.9	MBF	31.9	\$29,244.80		
	Paper Birch	0.1			MBF					
	Red Maple	3.0		MBF						
	Sugar Maple	63.7		MBF						
	Yellow Birch	0.4	MBF							
	Balsam Fir	Pulpwood	8	Cords						
	Mixed Hardwood		292	Cords						
	<i>Basswood</i>		3	<i>Cords</i>						
	<i>Beech</i>		13	<i>Cords</i>						
	<i>Ironwood</i>		1	<i>Cords</i>						
	<i>Red Maple</i>		26	<i>Cords</i>						
	<i>Sugar Maple</i>		248	<i>Cords</i>						
	<i>Yellow Birch</i>		1	<i>Cords</i>						
	9		Basswood	Sawtimber	3.7	MBF			41.7	\$38,167.10
			Paper Birch		0.1	MBF				
Red Maple			3.9		MBF					
Sugar Maple			83.2		MBF					
Yellow Birch			0.5		MBF					

DESCRIPTION OF TIMBER BY PAYMENT UNIT (PU), CON'T

PU	MARKET GROUP	PRODUCT	QUANTITY	UNIT	ACRES	ADVERTISE PRICE
9 con't	Balsam Fir Mixed Hardwood <i>Basswood</i> <i>Beech</i> <i>Ironwood</i> <i>Paper Birch</i> <i>Red Maple</i> <i>Sugar Maple</i> <i>Yellow Birch</i>	Pulpwood	10 381 4 16 1 1 34 324 1	Cords Cords Cords Cords Cords Cords Cords Cords		
10	Basswood Paper Birch Red Maple Sugar Maple Yellow Birch Balsam Fir Mixed Hardwood <i>Basswood</i> <i>Beech</i> <i>Ironwood</i> <i>Red Maple</i> <i>Sugar Maple</i> <i>Yellow Birch</i>	Sawtimber Pulpwood	2.6 0.1 2.8 58.3 0.3 7 268 3 12 1 24 227 1	MBF MBF MBF MBF MBF Cords Cords Cords Cords Cords Cords Cords	29.2	\$26,776.10
11	Basswood Black Cherry Paper Birch Red Maple Sugar Maple Yellow Birch Balsam Fir Mixed Aspen <i>Quaking Aspen</i> Mixed Hardwood <i>Basswood</i> <i>Beech</i> <i>Black Cherry</i> <i>Paper Birch</i> <i>Red Maple</i> <i>Sugar Maple</i> <i>Yellow Birch</i> Mixed Spruce <i>White Spruce</i>	Sawtimber Pulpwood	0.7 0.6 1.1 11.0 56.9 0.5 17 5 5 478 1 6 7 2 97 360 5 12 12	MBF MBF MBF MBF MBF MBF Cords Cords Cords Cords Cords Cords Cords Cords Cords Cords Cords Cords	43.8	\$32,528.60
12	Basswood Black Cherry Paper Birch Red Maple Sugar Maple Yellow Birch Balsam Fir Mixed Aspen <i>Quaking Aspen</i> Mixed Hardwood <i>Beech</i> <i>Black Cherry</i> <i>Paper Birch</i> <i>Red Maple</i> <i>Sugar Maple</i>	Sawtimber Pulpwood	0.6 0.5 0.8 8.1 41.9 0.4 13 3 3 353 5 6 1 73 265	MBF MBF MBF MBF MBF MBF Cords Cords Cords Cords Cords Cords Cords Cords Cords	32.3	\$23,972.60

DESCRIPTION OF TIMBER BY PAYMENT UNIT (PU), CON'T

PU	MARKET GROUP	PRODUCT	QUANTITY	UNIT	ACRES	ADVERTISE PRICE
12 con't	<i>Yellow Birch</i>	<i>Pulpwood</i>	3	<i>Cords</i>		
	Mixed Spruce		8	Cords		
	<i>White Spruce</i>		8	<i>Cords</i>		
TOTAL:			782.8	MBF		
TOTAL:			3,961	Cords		

Sale Specific Conditions & Requirements

Sale Name: C-174 Contract Hardwood

Sale Number: 41-020-24 Seq#: 2

1 - Sale Area

1.2 - Boundaries

1.2.1 - Painted Boundaries (9/19)

The sale boundary and Payment Unit boundaries are marked and identified by blue, red and yellow paint. Exterior sale boundary lines against private property are marked with blue paint. Exterior sale boundary lines against state are marked with red paint. Interior Payment Unit boundaries are marked with yellow paint. The painted boundary line trees are not Included Timber and are to be protected unless marked with orange paint. Yellow painted trees designating an interior Payment Unit boundary are only to be cut when all surrounding Payment Units have been paid.

2 - Timber Specifications

2.1 - Included Timber

2.1.3 - Cut Tree Marked Unit(s) (12/08)

Within Payment Unit(s) 1-12, all trees are designated for cutting when marked with orange paint above and below stump height, regardless of merchantability. In addition, cut all spruce and fir which meet minimum piece specifications in 2.2 Utilization.

3 - Payments

3.3 - Pre-measured Sales

3.3.4 - Dividing Payment Units (7/14)

Payment Unit(s) exceeding \$20,000 may be divided at the request of the Purchaser and upon approval of the Unit Manager. Dividing Payment Units is a contract modification which requires a Timber Sale Contract Amendment.

4 - Transportation

4.1 - Construction

4.1.3 - Slash and Earthen Piles (8/04)

Piles or windrows of earth along roads and landings that have been widened or constructed shall be leveled. Slash from road maintenance or construction, including stumps, shall be dispersed throughout the sale.

4.1.5 - Culverts (5/14)

The road between Payment Units 10 and 11 will require a culvert replacement. The DNR will provide the culvert and the permit if necessary. The Purchaser will provide the necessary rock and gravel to properly install the culvert.

4.1.6 - Road Construction (4/24)

Construction of new roads or improvements of existing roads shall be done in such a way as to minimize the environmental and visual impacts. Merchantable trees shall be cut and utilized unless otherwise directed. Non-merchantable trees shall be severed and laid flat on the ground. Slash shall be scattered, and not left in windrows and kept a minimum of 10 feet back from the road edge. Stumps shall be set upright, not left on edge, and be moved at least 10 feet away from the road edge. Disturbed soil shall be feathered into the woods and not left in berms or windrows.

4.1.7 - Road Closure (10/11)

All new roads built into the sale must be blocked to vehicle traffic upon completion of the sale. Overgrown roads that are reopened shall be considered new roads. In general, this will require constructing a four (4') foot high berm of stumps and logs covered with earth. These roads must be rendered impassable to cars and trucks. Contact the Sale Administrator for specific details of design and placement.

4.2 - Maintenance

4.2.2 - Fill Material (4/07)

To maintain roads, fill material may be needed in areas where "holes" exist or may be expected to develop. This fill material should be placed before trucking begins.

4.2.4 - Grading (10/16)

For completion of the sale, state forest roads must be graded. In general, this will require a road grader or bulldozer to shape up the roads after forest products have been hauled off site. This includes cleaning of drainage areas, grading, crowning and filling with gravel, if necessary. The grading equipment to be used must be approved by the Unit Manager or his/her representative.

4.3 - Public Right-of-Way

4.3.2 - County R-O-W (12/06)

The County must be contacted prior to crossing or harvesting in the County Road R-O-W. This applies to Payment Units 4, 6 and 12.

4.4 - Access

4.4.1 - Private property access (3/11)

Permission for access across private land to access Payment Units 1 and 2 is the responsibility of the Purchaser. A copy of the written permission from the private landowner may be required.

5 - Operations

5.2 - Conduct of Operations

5.2.2 - Hazard Trees/Snags

5.2.2.1 - Den Trees (10/16)

Obvious hollow and/or den trees shall be protected and left standing unless they are a safety hazard.

5.2.3 - Operating Restrictions

5.2.3.3 - Bark Slippage Restriction (3/09)

Within Payment Unit(s) 1-12, unless changed by written agreement, cutting and skidding are not permitted during the period of April 15 to July 15. This restriction is because of bark slippage.

5.2.32 - Decking/Landing Restoration (9/13)

All decking and landing areas must have the surface area restored to a condition equal to or better than before. This is to ensure the proper regeneration of the stand. Wood debris, chips and "cookies" from trimmings must be removed or scattered away from landing and loading areas and may not be windrowed on the edge.

5.2.37 - No Decking Areas (12/08)

No decking is allowed on the Chapel or Camp 15 Roads.

5.2.38 - No Decking Against Live Trees (2/04)

Cut products may not be decked against unmarked or designated leave trees.

5.4 - Soil Protection

5.4.6 - Wet Area Protection (5/10)

No harvesting operations, including skidding and felling, are to take place within the vernal pond areas or drainages. When harvesting occurs, there should be no disturbance to the vernal pond depression. All equipment, trees and tops should be kept out of this area. Within 100 feet of the pond, equipment should only be used when the soil is in a dry or frozen condition. Care must be taken by the Purchaser to identify and avoid operating in these areas of the timber sale.

5.8 - Protection of Endangered Species

5.8.3 - Red Shoulder Hawk or Goshawk (1) (2/16)

In the event that an active red shoulder hawk or goshawk nest is found, the contract may be amended to protect the nest site until the nest is determined to be inactive. The value of the trees in this excluded area will be refunded or credited to the Purchaser. The nest will be buffered with a five-chain radius (eight acre) protection area, centered on the nest tree, in which there will be no cutting or new roads constructed. Avoid human disturbance, including loading and skidding, in the protection area.

An additional zone of five chains (ten chains centered on the active nest tree) will be established in which there is no management activity from April 1 to July 30. Limit biomass harvesting and chipping operations within this ten-chain zone, retain the maximum one-third of residues per the Woody Biomass Harvesting Guidelines (Michigan DNR 2010). Nests determined to be inactive will be protected with a one-chain no-harvest buffer.

6 - Safety and Fire Prevention

6.2 - Signing

6.2.1 - Road Posting (10/20)

The Purchaser is responsible for posting and maintaining caution signs on the Chapel and Camp 15 Roads prior to beginning operations. The road must be posted at appropriate distances from the Sale Area to warn of logging activity and truck traffic. Signs must be removed when harvest operations are suspended or completed. The Purchaser will provide these signs.

TIMBER SALE MAP

This information provided by authority of Part 525, 1994 PA 451, as amended.

Sale Number

41-020-24

Date

08/27/2025

Forest Management Unit

Shingleton Mgt Unit

County

Alger

Mapped By: Kentner

Cruised By: Molin

Scale

1:24,000

Page

1

Of

1Township
47NRange
17WSection(s) and
Subdivision(s) SWNW,NENE;
Sec. 4 SWSW; Sec. 5 NW,W1/2NE,N1/2SW,N1/2SE,SESE; Sec. 6 SENE; Sec. 7 NW,NE; Sec. 8**Cover Type**

A = Aspen	J = Jack Pine	O = Oak	U = Upland Brush
B = Paper Birch	K = Rock	P = Lowland Poplar	UM = Upland Mix Forest
C = Cedar	L = Lowland Brush	Q = Mixed Swamp Conifer	V = Bog or Marsh
D = Treed Bog	LM = Lowland Mix Forest	R = Red Pine	W = White Pine
E = Swamp Hardwoods	M = Maple, Beech, Birch	S = Black Spruce	X = Non Stocked
F = Spruce/Fir	MC = Mixed Conifer	T = Tamarack	Y = Sand
G = Grass	MD = Mixed Deciduous	Z = Water	
H = Hemlock	N = Marsh		

Density

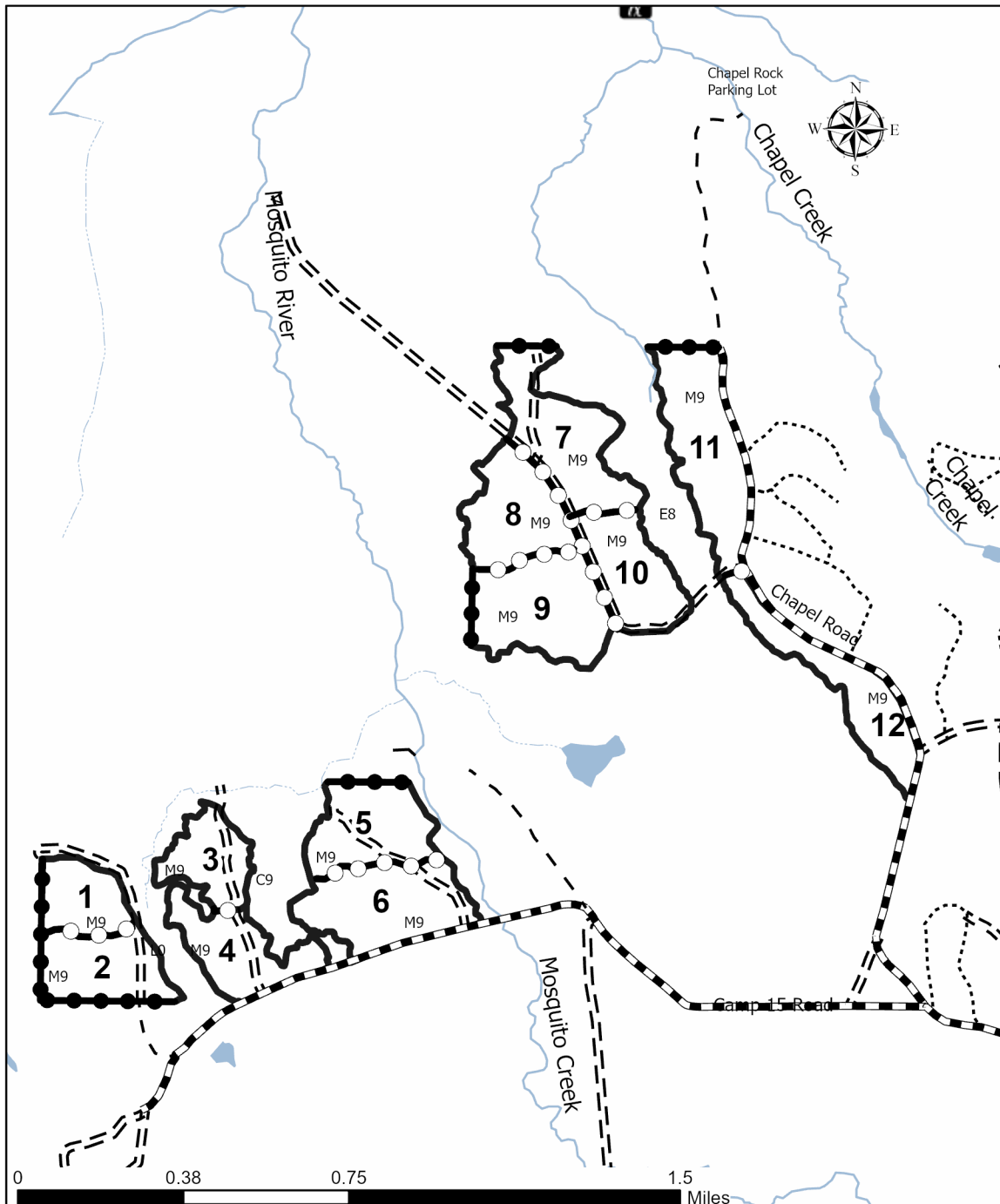
0 = Non Stocked	5 = Pole Timber Medium
1 = Seedling Sapling Poor	6 = Pole Timber Well
2 = Seedling Sapling Medium	7 = Saw Timber Poor
3 = Seedling Sapling Well	8 = Saw Timber Medium
4 = Pole Timber Poor	9 = Saw Timber Well

C-174 Contract Hardwood**386.0 Acres****Legend**

- Against State (Red)
- Payment Unit (Yellow)
- Private Line (Blue)
- Primary Forest Road
- Forest Access Route
- Administrative Access Only
- Paved Road
- Government Gravel/Dirt
- Private Gravel/Dirt

PU # Acres

1	19.3
2	27.8
3	20.6
4	27.8
5	31.2
6	40.1
7	40.3
8	31.9
9	41.7
10	29.2
11	43.8
12	32.3



TIMBER SALE INFORMATION

C-169 Contract Hardwood (41-169-24)

T48N, R17W, SEC. 33; T48N, R17W, SEC. 34; T48N, R17W, SEC. 35.

Alger County (Advertised Price \$99,527.50)

SALE NOTE: Permission for access across private land is the responsibility of the Purchaser. See Sale Spec 4.4.1 for details.

Within Payment Unit(s) 1-10, harvesting is not permitted during the period of April 15 to July 15 because of bark slippage.

Access may be through private land.

A timber sale contract for this lump sum, sealed bid timber sale will be awarded to the responsible bidder offering the highest sealed bid price. All units of volume listed below were estimated using the Inventory Manager computer program and the new Michigan taper model. Bids must be at or above the following advertised price for each product and species:

<u>PRODUCTS & SPECIES</u>	<u>ESTIMATED UNITS*</u>	<u>ADVERTISED PRICE</u>
Sawtimber		
Red Maple	20.9 MBF	\$ 136.00 / MBF
Sugar Maple	213.6 MBF	\$ 343.00 / MBF
Pulpwood		
Balsam Fir	8 Cords	\$ 16.60 / Cord
Mixed Hardwood	1,035 Cords	\$ 22.50 / Cord

* The total volume is statistically estimated within plus (+) or minus (-) 18.09 percent. There are an estimated 1,591 cords on this timber sale, plus or minus 288 cords at the 95% confidence level. The estimated units are final and not subject to adjustment. Prospective bidders are urged to examine this timber and to make their own estimates of quantity and quality.

BOND AND PAYMENT SCHEDULE:

1. A bond in the amount of \$4,976.00 to insure faithful performance of the conditions of the contract will be deposited by the successful bidder within 21 days of the sale award.
2. Cutting in any sale or unit without the required advance payment would be considered a trespass.
3. Total payment must be paid in advance or according to the following schedule :
 - (a) Ten percent (10%) of the sale value must be paid within 21 days of the sale award.
 - (b) The 10% down payment will be credited towards the first unit cut.
 - (c) Payment for each of the following units must be made before cutting begins in that unit:

<u>PAYMENT UNIT NUMBER</u>	<u>PERCENT OF TOTAL SALE VALUE</u>
01	19.0%
02	12.2%
03	14.6%
04	0.1%
05	6.5%
06	9.2%
07	11.5%
08	10.3%
09	9.4%
10	7.2%

4. If no cutting takes place, the 10% down payment will not be refunded.
5. Operations on the contract issued will terminate on 06/30/2029.

SALE STATISTICS

Volumes were calculated in cubic feet using the Michigan taper model. Cubic foot volume includes all wood inside bark for the product indicated. For display purposes, cubic feet were converted to cords and MBF using a simple conversion factor, e.g. 79 cubic feet per cord and 185 cubic feet per MBF. The cubic foot volumes are precise; the cords and MBF volumes are not. Cubic foot volume cannot be directly converted to cords or boards with precision.

SALE VOLUMES

The total estimated sale volume may not equal the sum of the species/products due to the nature of statistical calculations associated with double sampling methodology.

VOLUME			STATISTICAL RANGE IN CORDS	
TOTAL CUBIC FEET	TOTAL CORDS	PERCENT ERROR	MINIMUM	MAXIMUM
125,708	1,591	18.09%	1,303	1,879

VDU VOLUMES

A VDU is a Volume Determination Unit. Volumes and their associated statistics are calculated at the VDU level and summarized to the sale level. There is often a one to one relationship between a VDU and a Payment Unit, but not always, depending on the cruise design. Refer to the VDU TO PAYMENT UNIT table.

	VOLUME			RANGE IN CORDS	
VDU	TOTAL CUBIC FEET	TOTAL CORDS	PERCENT ERROR	MINIMUM	MAXIMUM
1	52,213	661	26.77%	484	838
2	435	6	1,270.62%	0	76
3	73,059	925	24.82%	695	1,154
TOTAL:	125,708	1,591		1,179	2,068

VDU TO PAYMENT UNIT

When a VDU is associated with more than one Payment Unit (PU), the VDU volumes are assigned to the PU based on acres of the VDU within the PU.

VDU	VDU ACRES	PU	PU ACRES
TOTAL:			

DESCRIPTION OF TIMBER BY PAYMENT UNIT (PU)

PU	MARKET GROUP	PRODUCT	QUANTITY	UNIT	ACRES	ADVERTISE PRICE
1	Red Maple	Sawtimber	3.3	MBF	47.7	\$18,789.70
	Sugar Maple		42.6	MBF		
	Balsam Fir	Pulpwood	1	Cords		
	Mixed Hardwood		165	Cords		
	<i>Beech</i>		2	<i>Cords</i>		
	<i>Red Maple</i>		13	<i>Cords</i>		
	<i>Sugar Maple</i>		150	<i>Cords</i>		
2	Red Maple	Sawtimber	2.1	MBF	30.9	\$12,188.30
	Sugar Maple		27.7	MBF		
	Balsam Fir	Pulpwood	1	Cords		
	Mixed Hardwood		106	Cords		
	<i>Beech</i>		1	<i>Cords</i>		
	<i>Red Maple</i>		8	<i>Cords</i>		
	<i>Sugar Maple</i>		97	<i>Cords</i>		
3	Red Maple	Sawtimber	2.6	MBF	36.9	\$14,546.70
	Sugar Maple		33.0	MBF		
	Balsam Fir	Pulpwood	1	Cords		
	Mixed Hardwood		127	Cords		
	<i>Beech</i>		1	<i>Cords</i>		
	<i>Red Maple</i>		10	<i>Cords</i>		
	<i>Sugar Maple</i>		116	<i>Cords</i>		
4	Balsam Fir	Pulpwood	5	Cords	5.6	\$83.00
5	Red Maple	Sawtimber	1.5	MBF	25.2	\$6,464.10
	Sugar Maple		13.2	MBF		
	Mixed Hardwood	Pulpwood	77	Cords		
	<i>Beech</i>		24	<i>Cords</i>		
	<i>Red Maple</i>		18	<i>Cords</i>		
	<i>Sugar Maple</i>		35	<i>Cords</i>		
6	Red Maple	Sawtimber	2.2	MBF	35.9	\$9,200.10
	Sugar Maple		18.8	MBF		
	Mixed Hardwood	Pulpwood	109	Cords		
	<i>Beech</i>		34	<i>Cords</i>		
	<i>Red Maple</i>		25	<i>Cords</i>		
	<i>Sugar Maple</i>		50	<i>Cords</i>		
7	Red Maple	Sawtimber	2.8	MBF	45.1	\$11,490.60
	Sugar Maple		23.6	MBF		
	Mixed Hardwood	Pulpwood	134	Cords		
	<i>Beech</i>		41	<i>Cords</i>		
	<i>Red Maple</i>		31	<i>Cords</i>		
	<i>Sugar Maple</i>		62	<i>Cords</i>		
8	Red Maple	Sawtimber	2.5	MBF	40.1	\$10,231.20
	Sugar Maple		20.9	MBF		
	Mixed Hardwood	Pulpwood	121	Cords		
	<i>Beech</i>		38	<i>Cords</i>		
	<i>Red Maple</i>		28	<i>Cords</i>		
	<i>Sugar Maple</i>		55	<i>Cords</i>		
9	Red Maple	Sawtimber	2.2	MBF	36.6	\$9,325.50
	Sugar Maple		19.1	MBF		
	Mixed Hardwood	Pulpwood	110	Cords		
	<i>Beech</i>		35	<i>Cords</i>		
	<i>Red Maple</i>		25	<i>Cords</i>		
	<i>Sugar Maple</i>		50	<i>Cords</i>		
10	Red Maple	Sawtimber	1.7	MBF	28.1	\$7,208.30
	Sugar Maple		14.7	MBF		
	Mixed Hardwood	Pulpwood	86	Cords		

DESCRIPTION OF TIMBER BY PAYMENT UNIT (PU), CON'T

PU	MARKET GROUP	PRODUCT	QUANTITY	UNIT	ACRES	ADVERTISE PRICE
10 con't	<i>Beech</i>	<i>Pulpwood</i>	27	<i>Cords</i>		
	<i>Red Maple</i>		20	<i>Cords</i>		
	<i>Sugar Maple</i>		39	<i>Cords</i>		
TOTAL:			234.5	MBF		
TOTAL:			1,043	Cords		

Sale Specific Conditions & Requirements

Sale Name: C-169 Contract Hardwood

Sale Number: 41-169-24 Seq#: 2

1 - Sale Area

1.2 - Boundaries

1.2.1 - Painted Boundaries (9/19)

The sale boundary and Payment Unit boundaries are marked and identified by blue, red and yellow paint. Exterior sale boundary lines against private property are marked with blue paint. Exterior sale boundary lines against state are marked with red paint. Interior Payment Unit boundaries are marked with yellow paint. Retention patches are marked with red paint; no harvesting activities may occur within these areas. The painted boundary line trees are not Included Timber and are to be protected unless marked with orange paint.

2 - Timber Specifications

2.1 - Included Timber

2.1.3 - Cut Tree Marked Unit(s) (12/08)

Within Payment Unit(s) 1-10, all trees are designated for cutting when marked with orange paint above and below stump height, regardless of merchantability.

3 - Payments

3.3 - Pre-measured Sales

3.3.4 - Dividing Payment Units (7/14)

Payment Unit(s) exceeding \$20,000 may be divided at the request of the Purchaser and upon approval of the Unit Manager. Dividing Payment Units is a contract modification which requires a Timber Sale Contract Amendment.

3.4 - Damaged Timber

3.4.3 - Special Protection Areas (8/11)

The Purchaser shall protect special protection areas from damage by the Purchaser's operations. Special protection areas are excluded with red paint lines and indicated on the Timber Sale Map. The Purchaser shall not operate within, cut live or dead trees or fell trees into the special protection area. If the Purchaser's operations have cut or damaged special protection areas through carelessness, the Purchaser shall pay \$5000 as fixed, agreed and liquidated damages for each acre or part thereof cut or damaged. Such payment does not constitute ownership of the undesignated timber.

4 - Transportation

4.1 - Construction

4.1.3 - Slash and Earthen Piles (8/04)

Piles or windrows of earth along roads and landings that have been widened or constructed shall be leveled. Slash from road maintenance or construction, including stumps, shall be dispersed into the woods.

4.1.4 - Timber Removed for Construction (3/23)

Trees cut or damaged in the process of pre-approved road, landing, or skid trail construction will be decked in an area separate from other Designated Timber and not removed until measured by the Sale Administrator. Payment will be made at contract prices or average prices, if not on the contract.

4.1.6 - Road Construction (4/24)

Construction of new roads or improvements of existing roads shall be done in such a way as to minimize the environmental and visual impacts. Merchantable trees shall be cut and utilized unless otherwise directed. Non-merchantable trees shall be severed and laid flat on the ground. Slash shall be chipped, utilized or otherwise removed from the sale. Stumps shall be set upright, not left on edge, and be moved at least 10 feet away from the road edge. Disturbed soil shall be feathered into the woods and not left in berms or windrows.

4.1.7 - Road Closure (10/11)

All new roads built into the sale must be blocked to vehicle traffic upon completion of the sale. Overgrown roads that are

reopened shall be considered new roads. In general, this will require constructing a four (4') foot high berm of stumps and logs covered with earth. These roads must be rendered impassable to cars and trucks. Contact the Sale Administrator for specific details of design and placement.

4.2 - Maintenance

4.2.2 - Fill Material (4/07)

To maintain roads, fill material may be needed in areas where "holes" exist or may be expected to develop. This fill material should be placed before trucking begins.

4.2.4 - Grading (10/16)

For completion of the sale, state forest roads must be graded. In general, this will require a road grader or bulldozer to shape up the roads after forest products have been hauled off site. This includes cleaning of drainage areas, grading, crowning and filling with gravel, if necessary. The grading equipment to be used must be approved by the Unit Manager or his/her representative.

4.4 - Access

4.4.1 - Private property access (3/11)

Permission for access across private land is the responsibility of the Purchaser. If crossing Manulife Management Property, a permit is required. When the sale is purchased, Manulife should be contacted about crossing their property. Allow 30-60 days for permit processing. A copy of the permit should be provided to the Unit Manager by the pre-sale conference.

5 - Operations

5.2 - Conduct of Operations

5.2.2 - Hazard Trees/Snags

5.2.2.1 - Den Trees (10/16)

Obvious hollow and/or den trees shall be protected and left standing unless they are a safety hazard.

5.2.3 - Operating Restrictions

5.2.3.3 - Bark Slippage Restriction (3/09)

Within Payment Unit(s) 1-10, unless changed by written agreement, cutting and skidding are not permitted during the period of April 15 to July 15. This restriction is because of bark slippage.

5.2.32 - Decking/Landing Restoration (9/13)

All decking and landing areas must have the surface area restored to a condition equal to or better than before. This is to ensure the proper regeneration of the stand. Wood debris, chips and "cookies" from trimmings must be removed or scattered away from landing and loading areas and may not be windrowed on the edge.

5.2.38 - No Decking Against Live Trees (2/04)

Cut products may not be decked against unmarked or designated leave trees.

5.8 - Protection of Endangered Species

5.8.3 - Red-shouldered Hawk or Goshawk (1) (1/25)

In the event that an active red shoulder hawk or goshawk nest is found, the contract may be amended to protect the nest site until the nest is determined to be inactive. The value of the trees in this excluded area will be refunded or credited to the Purchaser. The nest will be buffered with a five-chain radius (eight acre) protection area, centered on the nest tree, in which there will be no cutting or new roads constructed. Avoid human disturbance, including loading and skidding, in the protection area.

An additional zone of five chains (ten chains centered on the active nest tree) will be established in which there is no management activity from April 1 to July 30. Limit biomass harvesting and chipping operations within this ten-chain zone, retain the maximum one-third of residues per the Woody Biomass Harvesting Guidelines (Michigan DNR 2010). Nests determined to be inactive will be protected with a one-chain no-harvest buffer.

6 - Safety and Fire Prevention

6.2 - Signing

6.2.1 - Road Posting (10/20)

The Purchaser is responsible for posting and maintaining caution signs on Homestead Road and H-58 prior to beginning operations. The road must be posted at appropriate distances from the Sale Area to warn of logging activity and truck traffic. Signs must be removed when harvest operations are suspended or completed. The Purchaser will provide these signs.

TIMBER SALE MAP

This information provided by authority of Part 525, 1994 PA 451, as amended.

Sale Number

41-169-24

Date

01/22/2025

Forest Management Unit

Shingleton Mgt Unit

County

Alger

Mapped By: Kentner

Cruised By: Molin, Kentner

Scale

1:28,000

Page

1

Of

1Township
48NRange
17W

Section(s) and

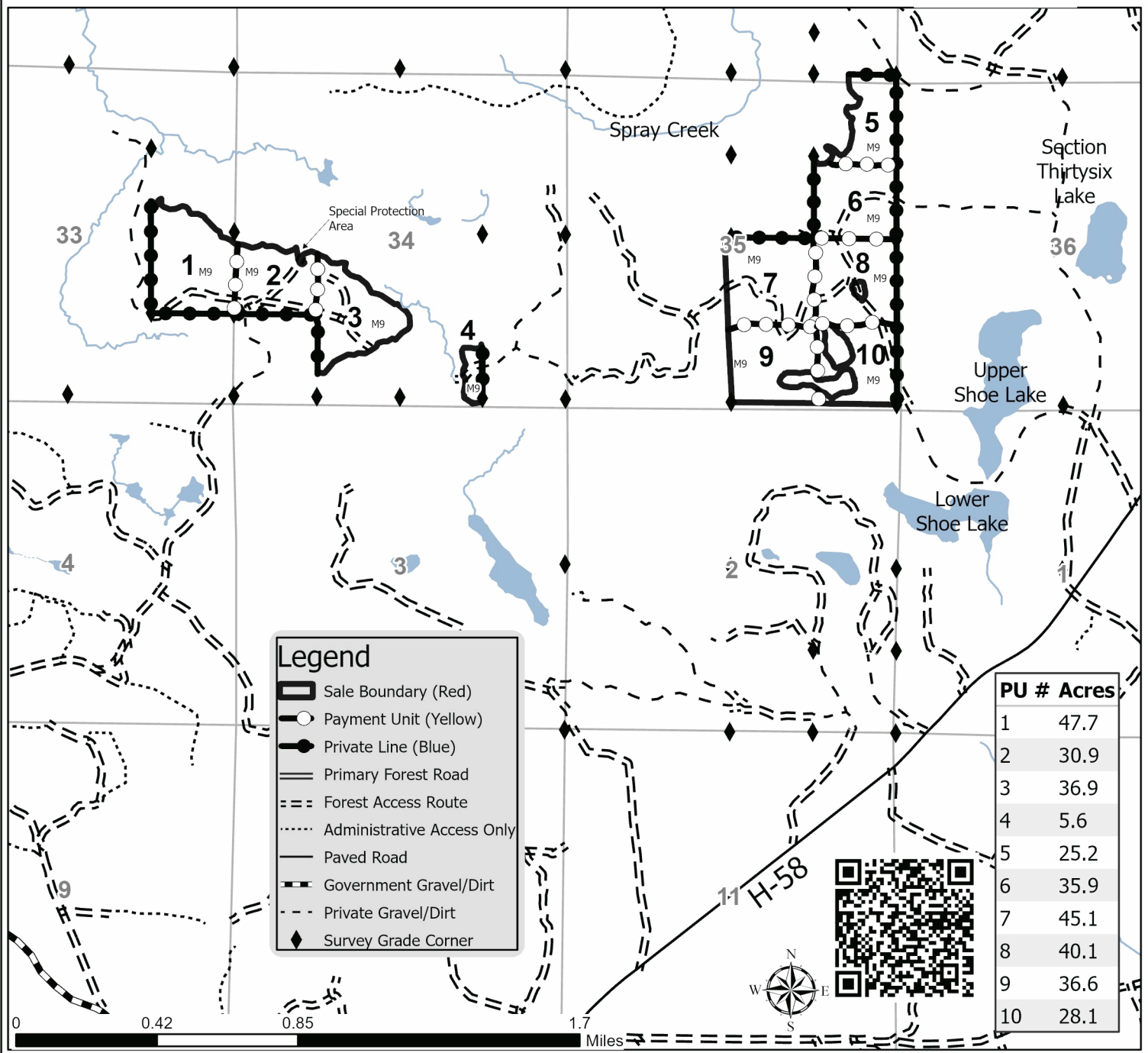
Subdivision(s) Sec. 33 SENE, NESE; Sec. 34 N1/2SW, SESW, W1/2SE; Sec. 35 SENW, E1/2NE, E1/2SW, SE;

Cover Type

A = Aspen	J = Jack Pine	O = Oak	U = Upland Brush
B = Paper Birch	K = Rock	P = Lowland Poplar	UM = Upland Mix Forest
C = Cedar	L = Lowland Brush	Q = Mixed Swamp Conifer	V = Bog or Marsh
D = Treed Bog	LM = Lowland Mix Forest	R = Red Pine	W = White Pine
E = Swamp Hardwoods	M = Maple, Beech, Birch	S = Black Spruce	X = Non Stocked
F = Spruce/Fir	MC = Mixed Conifer	T = Tamarack	Y = Sand
G = Grass	MD = Mixed Deciduous	Z = Water	
H = Hemlock	N = Marsh		

Density

0 = Non Stocked	5 = Pole Timber Medium
1 = Seedling Sapling Poor	6 = Pole Timber Well
2 = Seedling Sapling Medium	7 = Saw Timber Poor
3 = Seedling Sapling Well	8 = Saw Timber Medium
4 = Pole Timber Poor	9 = Saw Timber Well

C-169 Contract Hardwood**332.1 Acres**

C-174 Contract Hardwood (41-020-24)

T47N, R17W, SEC. 4; T47N, R17W, SEC. 5; T47N, R17W, SEC. 6; T47N, R17W,

In response to the notice of sale to be held 2:00 p.m. (local time) on October 8, 2025, I am hereby submitting my sealed bid (firm offer) for the following forest products to be cut. Bids for individual species must be at or above the advertised price. All non-responsive bid forms may be rejected.

<u>PRODUCTS & SPECIES</u>	<u>ESTIMATED VOLUME*</u>	<u>ADVERTISED PRICE</u>	<u>BID PRICE/UNIT</u>
Sawtimber			
Basswood	22.5 MBF	\$ 86.00/MBF	\$ _____
Black Cherry	3.3 MBF	\$ 107.00/MBF	\$ _____
Paper Birch	2.3 MBF	\$ 79.00/MBF	\$ _____
Red Maple	56.2 MBF	\$ 136.00/MBF	\$ _____
Sugar Maple	695.9 MBF	\$ 343.00/MBF	\$ _____
Yellow Birch	2.6 MBF	\$ 69.00/MBF	\$ _____
Pulpwood			
Balsam Fir	198 Cords	\$ 16.60/Cord	\$ _____
Mixed Aspen	13 Cords	\$ 30.50/Cord	\$ _____
Mixed Hardwood	3,716 Cords	\$ 22.50/Cord	\$ _____
Mixed Spruce	34 Cords	\$ 6.70/Cord	\$ _____

*The volumes are statistically estimated within plus (+) or minus (-) 6.72 percent at 95% confidence level. These estimated volumes are final and not subject to adjustment. Prospective bidders are urged to examine this timber and to make their own estimates of quantity and quality.

I understand that any or all bids may be rejected. All bids must be signed and all bid items must be bid or the bid form may be rejected. I also understand that consideration and awarding a contract will be based upon my past performance and ability to complete the contract based upon equipment and staffing subject to my control .

FEDERAL ID: ____ - ____ - ____ or SOCIAL SECURITY NUMBER: ____ - ____ - ____

Company or individual bidding: _____

Company representative's name: _____

Address: _____

City: _____ State: _____ Zip: _____

IF AVAILABLE, PLEASE PLACE THE PERSONALIZED LABEL FROM YOUR PROSPECTUS IN THE ABOVE BOX.

Individual or company representative's signature: _____ Date: _____

Phone number : _____ Email (optional): _____

**THE WINNING BIDDER MUST COMPLETE THE VERIFICATION OF WORKER'S DISABILITY COMPENSATION ACT
COMPLIANCE (ON REVERSE SIDE IF DOUBLE SIDED) WITHIN 21 DAYS OF SALE AWARD DATE**



TIMBER SALE VERIFICATION OF WORKER'S DISABILITY COMPENSATION ACT COMPLIANCE

As required by Act 317, P.A. 1969 (Worker's Compensation) and
Part 5 of Act 451 of 1994, as amended.

FOR DEPARTMENT USE ONLY

Sale Number (XX - XXX - XX - XX)

Forest Management Unit:

VERIFICATION OF WORKER'S DISABILITY COMPENSATION ACT COMPLIANCE

- This verification must be completed and submitted within 21 days of contract award and prior to the issuance of the timber sale contract.
- In addition, if boxes 2B or 2C are checked, then Notice of Exclusion or Certificate of Insurance must be submitted within twenty-one (21) days of the contract award and prior to the issuance of the timber sale contract.
- All information must be typed or printed except for written signatures.

Please Check Appropriate Categories:

1. My business is organized as (you **must** check one of the boxes below):
 - A. ☐ Sole Proprietorship (individual)
 - B. ☐ Partnership
 - C. ☐ Corporation
2. You **must** check one of the boxes below:
 - A. ☐ I certify my business is a sole proprietorship and it has no employees but the sole proprietor. I am not subject to the Worker's Compensation Laws.
 - B. ☐ I certify my business has satisfied its obligation to the Worker's Compensation Act through the use of an approved Notice of Exclusion (BWC-337, Rev. 5/96). I will provide a copy of the Notice of Exclusion within 21 days of the contract award. (For questions or a copy of the BWC-337, please call the Worker's Compensation Bureau at 517-322-1195).
 - C. ☐ I certify my business has a Worker's Compensation Policy. I will provide an original Certificate of Insurance within twenty-one (21) days of the contract award.
3. If you have checked item 2(A) or 2(B), you **must** indicate the number of **both** full-time and part-time employees, other than yourself, including family members and active partners (if none, you must enter "0").

_____ Full-time Employees

_____ Part-time Employees

Name of Business		Federal ID (or) Social Security No.
Address		Telephone ()
City	State	ZIP

I hereby certify that the above information is true and correct. I agree to notify the Michigan DNR of any changes that occur in factors affecting my coverage during any of my present and future operations.

Signature of Owner or Authorized Representative

Title

Date

Please complete the "SEALED BID" information on the next page

C-169 Contract Hardwood (41-169-24)
T48N, R17W, SEC. 33; T48N, R17W, SEC. 34; T48N, R17W, SEC. 35; Alger

In response to the notice of sale to be held 2:00 p.m. (local time) on October 8, 2025, I am hereby submitting my sealed bid (firm offer) for the following forest products to be cut. Bids for individual species must be at or above the advertised price. All non-responsive bid forms may be rejected.

<u>PRODUCTS & SPECIES</u>	<u>ESTIMATED VOLUME*</u>	<u>ADVERTISED PRICE</u>	<u>BID PRICE/UNIT</u>
Sawtimber			
Red Maple	20.9 MBF	\$ 136.00/MBF	\$ _____
Sugar Maple	213.6 MBF	\$ 343.00/MBF	\$ _____
Pulpwood			
Balsam Fir	8 Cords	\$ 16.60/Cord	\$ _____
Mixed Hardwood	1,035 Cords	\$ 22.50/Cord	\$ _____

*The volumes are statistically estimated within plus (+) or minus (-) 18.09 percent at 95% confidence level. These estimated volumes are final and not subject to adjustment. Prospective bidders are urged to examine this timber and to make their own estimates of quantity and quality.

I understand that any or all bids may be rejected. All bids must be signed and all bid items must be bid or the bid form may be rejected. I also understand that consideration and awarding a contract will be based upon my past performance and ability to complete the contract based upon equipment and staffing subject to my control .

FEDERAL ID: ____ - ____ - ____ or SOCIAL SECURITY NUMBER: ____ - ____ - ____

Company or individual bidding: _____

Company representative's name: _____

Address: _____

City: _____ State: _____ Zip: _____

IF AVAILABLE, PLEASE PLACE THE PERSONALIZED LABEL FROM YOUR PROSPECTUS IN THE ABOVE BOX.

Individual or company representative's signature: _____ Date: _____

Phone number : _____ Email (optional): _____

**THE WINNING BIDDER MUST COMPLETE THE VERIFICATION OF WORKER'S DISABILITY COMPENSATION ACT
COMPLIANCE (ON REVERSE SIDE IF DOUBLE SIDED) WITHIN 21 DAYS OF SALE AWARD DATE**



TIMBER SALE VERIFICATION OF WORKER'S DISABILITY COMPENSATION ACT COMPLIANCE

As required by Act 317, P.A. 1969 (Worker's Compensation) and
Part 5 of Act 451 of 1994, as amended.

FOR DEPARTMENT USE ONLY

Sale Number (XX - XXX - XX - XX)

Forest Management Unit:

VERIFICATION OF WORKER'S DISABILITY COMPENSATION ACT COMPLIANCE

- This verification must be completed and submitted within 21 days of contract award and prior to the issuance of the timber sale contract.
- In addition, if boxes 2B or 2C are checked, then Notice of Exclusion or Certificate of Insurance must be submitted within twenty-one (21) days of the contract award and prior to the issuance of the timber sale contract.
- All information must be typed or printed except for written signatures.

Please Check Appropriate Categories:

1. My business is organized as (you **must** check one of the boxes below):
 - A. ☐ Sole Proprietorship (individual)
 - B. ☐ Partnership
 - C. ☐ Corporation
2. You **must** check one of the boxes below:
 - A. ☐ I certify my business is a sole proprietorship and it has no employees but the sole proprietor. I am not subject to the Worker's Compensation Laws.
 - B. ☐ I certify my business has satisfied its obligation to the Worker's Compensation Act through the use of an approved Notice of Exclusion (BWC-337, Rev. 5/96). I will provide a copy of the Notice of Exclusion within 21 days of the contract award. (For questions or a copy of the BWC-337, please call the Worker's Compensation Bureau at 517-322-1195).
 - C. ☐ I certify my business has a Worker's Compensation Policy. I will provide an original Certificate of Insurance within twenty-one (21) days of the contract award.
3. If you have checked item 2(A) or 2(B), you **must** indicate the number of **both** full-time and part-time employees, other than yourself, including family members and active partners (if none, you must enter "0").

_____ Full-time Employees

_____ Part-time Employees

Name of Business		Federal ID (or) Social Security No.
Address		Telephone ()
City	State	ZIP

I hereby certify that the above information is true and correct. I agree to notify the Michigan DNR of any changes that occur in factors affecting my coverage during any of my present and future operations.

Signature of Owner or Authorized Representative

Title

Date

Please complete the "SEALED BID" information on the next page