



**DEPARTMENT OF NATURAL RESOURCES
STATE OF MICHIGAN
TIMBER SALE PROSPECTUS #7702**

SCHEDULED SALE DATE AND TIME: 4:00 p.m. (local time) on November 6, 2025.

LOCATION: TRAVERSE CITY MGMT UNIT, 2122 M 37 SOUTH, TRAVERSE CITY, MI 49685.

PROSPECTUS NOTE: The bidder is advised to inspect the sale area and review the location, estimated volumes, operating costs and contract terms of proposed sales. Please be aware that some landowners may request 60 days or more notice for access across their land.

Notice is hereby given that bids will be received by the Unit Manager, TRAVERSE CITY MANAGEMENT UNIT, for certain timber on the following described lands:

Stage 18 Pine (61-010-25) / T26N, R09W, SEC. 2 , NWNW.

T27N, R09W, SEC. 35, SWSW.

Grand Traverse County, Advertised Price \$16,453.55, 38.8 Acres, White Pine, Aspen.

Headquarters Lake White Pine (61-016-25) / T25N, R09W, SEC. 23, S1/2NW,SWNE,N1/2SW,NWSE.

Grand Traverse County, Advertised Price \$13,195.65, 46.9 Acres, White Pine, Hardwood.

SALE NOTE: A recreation site such as a trail, pathway, or campground is within the sale area or the vicinity.
Certain restrictions/specifications may be applicable including time restrictions.

Headquarters Dam Pine (61-036-25) / T25N, R09W, SEC. 23, S1/2SE.

T25N, R09W, SEC. 24, SWNE,N1/2SW,N1/2SE,SWSE.

T25N, R09W, SEC. 25, NW.

T25N, R09W, SEC. 26, NE.

Grand Traverse County, Advertised Price \$254,569.90, 179.0 Acres, Red Pine, White Pine.

SALE NOTE: A recreation site such as a trail, pathway, or campground is within the sale area or the vicinity.
Certain restrictions/specifications may be applicable including time restrictions.

Adios Hardwoods (61-038-25) / T27N, R14W, SEC. 16, S1/2SW.

Benzie County, Advertised Price \$257,666.65, 74.9 Acres, Hardwood, Sugar Maple.

South Branch Ferns (61-046-25) / T26N, R09W, SEC. 2 , N1/2NW,NWNE.

Grand Traverse County, Advertised Price \$17,686.95, 35.7 Acres, Aspen, White Pine.

BID INSTRUCTIONS (VER. 10/10/2022):

1. Scheduled Bid Location, Date, and Time (2/11)

Bids must be received by the Unit Manager, TRAVERSE CITY OFFICE, 2122 M 37 South, Traverse City, MI 49685, no later than 4:00 p.m. (local time) on November 6, 2025. For further information concerning this sale, contact Matthew Edison at 906-291-0095.

2. Bidder's Qualifications (10/22)

If all or part of a timber sale was prepared by a private contractor, the contractor and that contractor's company are not permitted to bid on the timber sale. A person must be 18 years of age or older to purchase timber. Permanent employees of the Department of Natural Resources or members of their immediate household may not bid. Former employees, in the permanent or seasonal class, may not bid until 3 months after the last day of active duty. Bids will not be accepted from individuals or companies appearing on the DNR/FRD No-Bid List. This list contains the names of purchasers who previously failed to execute a contract within 21-days or who have a history of poor performance.

3. Preparation of Sealed Bids (5/16)

Bid Forms may be completed online thru Michigan DNR Timber Sale Online Bidding (OLB) at www.michigan.gov/timberbidding or by completing the hardcopy Bid Form found in the Timber Sale Prospectus. Hardcopy Bid Forms shall be manually signed in ink. Registration in OLB is considered your 'signature' for all bids submitted thru that system. Bid prices must be entered for each species and product in the Bid Price column for all material subject to bidding and all fill-in blanks must be completed. If erasures or other changes appear on the hardcopy Bid Form, each erasure or change must be initialed by the person signing the bid.

4. Submission of Sealed Bids (5/16)

Bid forms may be obtained from the Unit Manager or thru OLB. Bids may be submitted hardcopy or thru OLB. All hardcopy bids must be submitted on the bid form and in an envelope clearly identified as described in this section. NOTE: Only one bid form per bid envelope. Sealed bids must be submitted to the Unit office designated in the prospectus and must be submitted at or prior to the time established in the prospectus. The envelope should show on the outside (a) the sale name or number and (b) the date and time of bid opening, as shown in the prospectus. Bids received after the time specified in the sale prospectus are late bids and will be rejected.

It is possible for a bidder to submit multiple bids on a single sale. For example, a bid may be submitted hardcopy and a bid may be submitted thru OLB. Or, two bidders from the same company could both submit bids on the same sale. If this were to happen, the State would accept all bids received and award the contract accordingly. All bidding and contractual requirements would apply to all bids received.

5. Public Opening of Sealed Bids (7/16)

If conditions permit, the sealed bids will be publicly opened and posted at the time and place set in the prospectus.

If a bidder, present at a bid opening, has submitted bids on more than one sale, that bidder may withdraw their unopened bid envelopes or announce the withdrawal of their online bid after being declared the successful bidder on one sale.

6. Award of Contract (1/11)

Award of the contract will be made to the Bidder whose bid, conforming to the prospectus, is most advantageous to the State of Michigan on the basis of total value at rates bid for the estimated quantities. The State reserves the right to reject any bid or waive any minor irregularity in bids received. A written award mailed (or otherwise furnished) to the successful Bidder shall be deemed to result in a binding contract without further action by either party.

7. Down Payment (1/11)

The Bidder to whom award is made must make a down payment within 21 days of the sale award. The amount of the down payment will be calculated as shown in the Bond and Payment Schedule of this prospectus. Only cash may be used to meet this requirement.

8. Performance Security (1/11)

As guarantee of faithful performance, a cash bond, certificate of deposit, surety bond or irrevocable letter of credit (LOC) is required within 21 days of the sale award. The amount of the performance security is shown in the Bond and

Payment Schedule of this prospectus. If an LOC or surety is used, the coverage must extend for at least 6 months beyond the contract expiration.

9. Worker's Compensation (10/22)

Purchaser shall obtain worker's compensation insurance to cover claims under Michigan's Worker's Disability Compensation Act of 1969 or similar employee benefit act of any other state applicable to an employee. Verification of Worker's Disability Compensation Act Compliance must be completed and submitted within 21 days of contract award and prior to the issuance of the timber sale contract. In addition, if applicable, Notice of Exclusion or Certificate of Insurance must also be submitted.

10. Timber Sale Contract (10/22)

Additional conditions and requirements common to all timber sales are listed on the timber sale contract (R4031) and are available on line at www.michigan.gov/timber. Contact the Unit Manager for additional information or a sample contract. Within 21 days of the date of the award letter, the bidder must sign the contract and provide the required down payment, performance security, and verification of worker's disability compensation. The down payment and performance security shall be in accordance with the provisions of the timber sale contract, in the sums stated in this prospectus. If these actions are not taken, then the Bidder, the Bidder's corporation, and the corporation's principals may not be permitted to bid on State timber sales for a period of 3 months after the first offense, 6 months after the second offense, and 1 year after the third offense. An offense will only be counted against the Bidder for 5 years. In addition, the Bidder certifies that if awarded this contract, the Bidder will complete the timber sale contract in accordance with its terms and any modifications thereof including requirements to purchase, cut, and remove the included timber by the expiration date.

Payment Unit values in the State Forest Timber Sale Contract are calculated based on the advertised value of the Payment Unit as a percentage of the total advertised value of the contract. The advertised value of each Payment Unit is given in the Description of Timber by Payment Unit table on the Timber Sale Information page. For example, if the value of Payment Unit 1 is advertised as \$1,500 and the total Timber Sale value is advertised as \$10,000, the contract price for Payment Unit 1 will be 15% of the total bid price ($\$1,500/\$10,000 * 100$).

11. Disclaimer of Estimates and Bidder's Warranty of Inspection (10/22)

Before submitting this bid, the Bidder is advised and cautioned to inspect the sale area, review the requirements of the sale contract, and take other steps as may be reasonably necessary to ascertain the location, estimated volumes, construction estimates, and operating costs of the proposed sale. Failure to do so will not relieve the Bidder from responsibility for completing the contract.

The Bidder warrants that this bid is submitted solely on the basis of the Bidder's examination and inspection of the quality and quantity of the timber offered for sale and the Bidder's opinion of the value thereof and the costs of recovery. No reliance should be placed on the State of Michigan's estimates of timber quality, quantity or costs of recovery. Bidder further acknowledges that the State of Michigan: (i) expressly disclaims any warranty of fitness of timber for any purpose; (ii) offers this timber as is without any warranty of quality (merchantability) or quantity and (iii) expressly disclaims any warranty as to the quantity or quality of timber sold.

12. Certification and Chain-of-Custody (10/22)

Unless otherwise indicated in the contract under section 7 – Other Conditions of the Sale Specific Conditions & Requirements, the area encompassed by this timber sale is certified to the standards of the Forest Stewardship Council (FSC) - Certificate #SCS-FM/COC-00090N and the Sustainable Forestry Initiative (SFI) - Certificate #NSF-SFIS-5Y031-SF5. Forest products from this sale may be delivered to the mill as "FSC 100% and / or SFI certified" as long as the contractor hauling the forest products is chain-of-custody (COC) certified or covered under a COC certificate from the destination mill. The purchaser is responsible for maintaining COC after leaving the sale area.

13. Good Neighbor Authority (GNA) Requirements (10/22)

If the name of this timber sales contains the acronym GNA, it is authorized by the Good Neighbor Authority (GNA) and covered by various agreements between the U.S. Forest Service and the State. The timber sale occurs on federal land and the following conditions apply:

GNA contracts on US Forest Service land will not be awarded to purchasers on the Federal list of excluded parties. The System for Award Management (SAM) will be checked for active excluded parties prior to award of contract. In

addition, the Bidder to whom award is made must complete an Assurance Regarding Felony Conviction or Tax Delinquent Status for Corporate Applicants (AD-3031).

14. Good Neighbor Authority (GNA) Requirements, con't (10/22)

Bidder certifies, by signing this bid form, that to the best of Bidder's knowledge that the following representations are accurate and complete.

- a. That the Bidder and its principals are not presently debarred, suspended, proposed for debarment, declared ineligible, or voluntary excluded from timber sales (covered transactions) by any Federal department or agency.
- b. That the Bidder and its principals have not within a 3-year period preceding this bid been convicted of or had a civil judgment rendered against them for commission of fraud or a criminal offense in connection with obtaining , attempting to obtain, or performing a public (Federal, State, or local) transaction or contract under a public transaction; violation of Federal or State antitrust statutes or commission of embezzlement, theft, forgery, bribery, falsification or destruction of records, making false statements, or receiving stolen property.
- c. That the Bidder and its principals are not presently indicted for or otherwise criminally or civilly charged by a governmental entity (Federal, State, or local) with commission of any of the offenses enumerated in paragraph b of this certification.
- d. That the Bidder and its principals have not within a 3-year period preceding this bid had one or more public transactions (Federal, State, or local) terminated for breach or default of a timber or forest product contract.

Bidders that cannot certify this requirement, in whole or in part, shall submit an explanation with their bid.

Scott Bowen
Director

TIMBER SALE INFORMATION

Stage 18 Pine (61-010-25)
T26N, R09W, SEC. 2; T27N, R09W, SEC. 35.
Grand Traverse County (Advertised Price \$16,453.55)

A timber sale contract for this lump sum, sealed bid timber sale will be awarded to the responsible bidder offering the highest sealed bid price. All units of volume listed below were estimated using the Inventory Manager computer program and the new Michigan taper model. Bids must be at or above the following advertised price for each product and species:

<u>PRODUCTS & SPECIES</u>	<u>ESTIMATED UNITS*</u>	<u>ADVERTISED PRICE</u>
Sawtimber		
Red Pine	6.7 MBF	\$ 136.00 / MBF
White Pine	43.2 MBF	\$ 76.00 / MBF
Pulpwood		
Jack Pine	17 Cords	\$ 15.25 / Cord
Mixed Hardwood	43 Cords	\$ 19.60 / Cord
Quaking Aspen	172 Cords	\$ 23.55 / Cord
Red Pine	18 Cords	\$ 62.75 / Cord
White Pine	215 Cords	\$ 27.80 / Cord

* The total volume is statistically estimated within plus (+) or minus (-) 19.56 percent. There are an estimated 582 cords on this timber sale, plus or minus 114 cords at the 95% confidence level. The estimated units are final and not subject to adjustment. Prospective bidders are urged to examine this timber and to make their own estimates of quantity and quality.

BOND AND PAYMENT SCHEDULE:

- A bond in the amount of \$823.00 to insure faithful performance of the conditions of the contract will be deposited by the successful bidder within 21 days of the sale award.
- Cutting in any sale or unit without the required advance payment would be considered a trespass.
- Total payment must be paid in advance or according to the following schedule :
 - Ten percent (10%) of the sale value must be paid within 21 days of the sale award.
 - The 10% down payment will be credited towards the first unit cut.
 - Payment for each of the following units must be made before cutting begins in that unit:

PAYMENT UNIT NUMBER	PERCENT OF TOTAL SALE VALUE
01	54.6%
02	45.4%
- If no cutting takes place, the 10% down payment will not be refunded.
- Operations on the contract issued will terminate on 06/30/2028.

SALE STATISTICS

Volumes were calculated in cubic feet using the Michigan taper model. Cubic foot volume includes all wood inside bark for the product indicated. For display purposes, cubic feet were converted to cords and MBF using a simple conversion factor, e.g. 79 cubic feet per cord and 185 cubic feet per MBF. The cubic foot volumes are precise; the cords and MBF volumes are not. Cubic foot volume cannot be directly converted to cords or boards with precision.

SALE VOLUMES

The total estimated sale volume may not equal the sum of the species/products due to the nature of statistical calculations associated with double sampling methodology.

VOLUME		STATISTICAL RANGE IN CORDS		
TOTAL CUBIC FEET	TOTAL CORDS	PERCENT ERROR	MINIMUM	MAXIMUM
45,966	582	19.56%	468	696

VDU VOLUMES

A VDU is a Volume Determination Unit. Volumes and their associated statistics are calculated at the VDU level and summarized to the sale level. There is often a one to one relationship between a VDU and a Payment Unit, but not always, depending on the cruise design. Refer to the VDU TO PAYMENT UNIT table.

	VOLUME			RANGE IN CORDS	
VDU	TOTAL CUBIC FEET	TOTAL CORDS	PERCENT ERROR	MINIMUM	MAXIMUM
25	45,966	582	19.57%	468	696
TOTAL:	45,966	582		468	696

VDU TO PAYMENT UNIT

When a VDU is associated with more than one Payment Unit (PU), the VDU volumes are assigned to the PU based on acres of the VDU within the PU.

VDU	VDU ACRES	PU	PU ACRES
TOTAL:			

DESCRIPTION OF TIMBER BY PAYMENT UNIT (PU)

PU	MARKET GROUP	PRODUCT	QUANTITY	UNIT	ACRES	ADVERTISE PRICE
1	Red Pine	Sawtimber	3.6	MBF	21.1	\$8,977.05
	White Pine		23.5	MBF		
	Jack Pine	Pulpwood	9	Cords		
	Mixed Hardwood		24	Cords		
	Red Oak	Sawtimber	1.3	MBF		
	Black Cherry	Pulpwood	6	Cords		
	Ironwood		1	Cords		
	Red Maple		10	Cords		
	Red Oak		4	Cords		
	Quaking Aspen		94	Cords		
	Red Pine		10	Cords		
	White Pine		117	Cords		
2	Red Pine	Sawtimber	3.1	MBF	17.7	\$7,476.50
	White Pine		19.7	MBF		
	Jack Pine	Pulpwood	8	Cords		
	Mixed Hardwood		19	Cords		
	Red Oak	Sawtimber	1.0	MBF		
	Black Cherry	Pulpwood	5	Cords		
	Red Maple		9	Cords		
	Red Oak		3	Cords		
	Quaking Aspen		78	Cords		
	Red Pine		8	Cords		
	White Pine		98	Cords		
	TOTAL:			49.9		
TOTAL:			465	Cords		

Sale Specific Conditions & Requirements

Sale Name: Stage 18 Pine

Sale Number: 61-010-25 Seq#: 1

1 - Sale Area

1.2 - Boundaries

1.2.1 - Painted Boundaries (9/19)

The sale boundary and Payment Unit boundaries are marked and identified by red and yellow paint. Exterior sale boundary lines against state are marked with red paint. Interior Payment Unit boundaries are marked with yellow paint. The painted boundary line trees are not Included Timber and are to be protected unless marked with orange paint. Yellow painted trees designating an interior Payment Unit boundary are only to be cut when all surrounding Payment Units have been paid.

2 - Timber Specifications

2.1 - Included Timber

2.1.3 - Cut Tree Marked Unit(s) (12/08)

Within Payment Unit(s) 1 & 2, all trees are designated for cutting when marked with orange paint above and below stump height, regardless of merchantability. In addition, all aspen, jack pine and black cherry greater than 4.5" DBH are designated for harvest.

2.2 - Utilization

2.2.3 - Stump Heights (12/24)

Stump heights within the Sale Area shall not exceed 12 inches for trees greater than 10 inches at DBH and four (4) inches for trees smaller than 10 inches at DBH.

3 - Payments

3.4 - Damaged Timber

3.4.1 - Damaged Timber (12/24)

General Condition and Requirement 3.4 Damaged Timber, defines liquidated damages for undesignated live merchantable trees which are cut or injured.

No damage is acceptable to undesignated live merchantable trees. Within the Sale Area, if more than 10% of trees (> 4.5" DBH) within a specified area of the sale are damaged, liquidated damages will be assessed for all trees damaged. Rates will be in accordance with General Condition and Requirement 3.4 Damaged Timber.

4 - Transportation

4.1 - Construction

4.1.11 - Permits (2/12)

The Purchaser will secure any necessary permits that may be required.

4.1.12 - No New Roads (1/12)

No new roads will be permitted in any Payment Unit. All operations are limited to existing roads. Only skid trails will be allowed.

5 - Operations

5.2 - Conduct of Operations

5.2.1 - Slash

5.2.1.8 - Slash Height (12/08)

No slash or tree tops may exceed 24 inches in height.

5.2.2 - Hazard Trees/Snags

5.2.2.1 - Den Trees (10/16)

Obvious hollow and/or den trees shall be protected and left standing unless they are a safety hazard.

5.2.3 - Operating Restrictions

5.2.3.4 - Oak Wilt Restriction, No Exceptions (1/18)

Within Payment Unit(s) 1 & 2, cutting, skidding, hauling within the sale and brushing of access roads to the sale are not permitted during the period of April 15 to July 15. No exceptions will be granted. This is necessary to reduce the spread of oak wilt.

5.2.29 - Shrub Protection (1/20)

Do not cut or damage hawthorn, witch-hazel, or juneberry. These woody-shrub plants are highly beneficial to various wildlife species.

5.4 - Soil Protection

5.4.1 - Rutting Restriction, General (7/16)

Operations are to cease immediately if equipment and weather conditions result in rutting of roads and/or skid trails which are 12 inches or greater in depth and 50 feet in length. The Unit Manager or his/her representative may restrict hauling and/or skidding if ruts exceed the specified depth. With the Unit Manager or his/her representative's approval, the Purchaser may return to the area when the risk of rutting has decreased.



TIMBER SALE MAP

This information provided by authority of Part 525, 1994 PA 451, as amended.

Sale Number
61-010-25

Date
07/25/2025

Forest Management Unit	County	Mapped By: Patrick Cotant	Scale	Page	Of
Traverse City Mgt Unit	Grand Traverse	Cruised By: Patrick Cotant & Caleb Bey	1:15,840	1	1

Township	Range	Section(s) and
26N / 27N	09W	Subdivision(s) Sec. 2 NWNW; Sec. 35 SWSW;

Cover Type

A = Aspen	J = Jack Pine	O = Oak	U = Upland Brush
B = Paper Birch	K = Rock	P = Lowland Poplar	UM = Upland Mix Forest
C = Cedar	L = Lowland Brush	Q = Mixed Swamp Conifer	V = Bog or Marsh
D = Treed Bog	LM = Lowland Mix Forest	R = Red Pine	W = White Pine
E = Swamp Hardwoods	M = Maple, Beech, Birch	S = Black Spruce	X = Non Stocked
F = Spruce/Fir	MC = Mixed Conifer	T = Tamarack	Y = Sand
G = Grass	MD = Mixed Deciduous		Z = Water
H = Hemlock	N = Marsh		

Density

0 = Non Stocked	5 = Pole Timber Medium
1 = Seedling Sapling Poor	6 = Pole Timber Well
2 = Seedling Sapling Medium	7 = Saw Timber Poor
3 = Seedling Sapling Well	8 = Saw Timber Medium
4 = Pole Timber Poor	9 = Saw Timber Well

Payment Unit Number	Acres
1	21.1
2	17.7

Stage 18 Pine

38.8 Acres

Adjacent Timber Sale

Legend

- Against State (Red)
- Payment Unit (Yellow)
- Primary Forest Road
- Forest Access Route
- Administrative Access Only
- Paved Road
- Government Gravel/Dirt
- Private Gravel/Dirt
- Recreational Trails
- Field Grade Corner



0 0.25 0.5 1 Miles

Use QR Code to
open Map in App



TIMBER SALE INFORMATION

Headquarters Lake White Pine (61-016-25)

T25N, R09W, SEC. 23.

Grand Traverse County (Advertised Price \$13,195.65)

SALE NOTE: A recreation site such as a trail, pathway, or campground is within the sale area or the vicinity. Certain restrictions/specifications may be applicable including time restrictions.

A timber sale contract for this lump sum, sealed bid timber sale will be awarded to the responsible bidder offering the highest sealed bid price. All units of volume listed below were estimated using the Inventory Manager computer program and the new Michigan taper model. Bids must be at or above the following advertised price for each product and species:

<u>PRODUCTS & SPECIES</u>	<u>ESTIMATED UNITS*</u>	<u>ADVERTISED PRICE</u>
Sawtimber		
Red Pine	1.6 MBF	\$ 140.00 / MBF
White Pine	62.2 MBF	\$ 76.00 / MBF
Pulpwood		
Mixed Hardwood	4 Cords	\$ 19.60 / Cord
Red Pine	1 Cords	\$ 62.75 / Cord
White Oak	6 Cords	\$ 30.05 / Cord
White Pine	285 Cords	\$ 27.80 / Cord

* The total volume is statistically estimated within plus (+) or minus (-) 20.19 percent. There are an estimated 444 cords on this timber sale, plus or minus 90 cords at the 95% confidence level. The estimated units are final and not subject to adjustment. Prospective bidders are urged to examine this timber and to make their own estimates of quantity and quality.

BOND AND PAYMENT SCHEDULE:

- A bond in the amount of \$660.00 to insure faithful performance of the conditions of the contract will be deposited by the successful bidder within 21 days of the sale award.
- Cutting in any sale or unit without the required advance payment would be considered a trespass.
- Total payment must be paid in advance or according to the following schedule :
 - Ten percent (10%) of the sale value must be paid within 21 days of the sale award.
 - The 10% down payment will be credited towards the first unit cut.
 - Payment for each of the following units must be made before cutting begins in that unit:

PAYMENT UNIT NUMBER	PERCENT OF TOTAL SALE VALUE
01	74.0%
02	26.0%
- If no cutting takes place, the 10% down payment will not be refunded.
- Operations on the contract issued will terminate on 12/31/2027.

SALE STATISTICS

Volumes were calculated in cubic feet using the Michigan taper model. Cubic foot volume includes all wood inside bark for the product indicated. For display purposes, cubic feet were converted to cords and MBF using a simple conversion factor, e.g. 79 cubic feet per cord and 185 cubic feet per MBF. The cubic foot volumes are precise; the cords and MBF volumes are not. Cubic foot volume cannot be directly converted to cords or boards with precision.

SALE VOLUMES

The total estimated sale volume may not equal the sum of the species/products due to the nature of statistical calculations associated with double sampling methodology.

VOLUME		STATISTICAL RANGE IN CORDS		
TOTAL CUBIC FEET	TOTAL CORDS	PERCENT ERROR	MINIMUM	MAXIMUM
35,075	444	20.19%	354	534

VDU VOLUMES

A VDU is a Volume Determination Unit. Volumes and their associated statistics are calculated at the VDU level and summarized to the sale level. There is often a one to one relationship between a VDU and a Payment Unit, but not always, depending on the cruise design. Refer to the VDU TO PAYMENT UNIT table.

	VOLUME			RANGE IN CORDS	
VDU	TOTAL CUBIC FEET	TOTAL CORDS	PERCENT ERROR	MINIMUM	MAXIMUM
43	35,075	444	20.19%	354	534
TOTAL:	35,075	444		354	534

VDU TO PAYMENT UNIT

When a VDU is associated with more than one Payment Unit (PU), the VDU volumes are assigned to the PU based on acres of the VDU within the PU.

VDU	VDU ACRES	PU	PU ACRES
43	46.9	1	34.8
		2	12.1
TOTAL:	46.9		46.9

DESCRIPTION OF TIMBER BY PAYMENT UNIT (PU)

PU	MARKET GROUP	PRODUCT	QUANTITY	UNIT	ACRES	ADVERTISE PRICE
1	Red Pine	Sawtimber	1.2	MBF	34.8	\$9,767.15
	White Pine		46.2	MBF		
	Mixed Hardwood	Pulpwood	2	Cords		
	Black Cherry		1	Cords		
	Red Maple		1	Cords		
	Red Pine		1	Cords		
	White Oak		4	Cords		
	White Pine		211	Cords		
2	Red Pine	Sawtimber	0.4	MBF	12.1	\$3,428.50
	White Pine		16.0	MBF		
	Mixed Hardwood	Pulpwood	2	Cords		
	Black Cherry		1	Cords		
	Red Maple		1	Cords		
	White Oak		2	Cords		
	White Pine		74	Cords		
	TOTAL:			63.8		
TOTAL:			296	Cords		

Sale Specific Conditions & Requirements

Sale Name: Headquarters Lake White Pine

Sale Number: 61-016-25 Seq#: 1

1 - Sale Area

1.2 - Boundaries

1.2.1 - Painted Boundaries (9/19)

The sale boundary and Payment Unit boundaries are marked in red paint or are unmarked and identified by a road. Exterior sale boundary lines against state are marked with red paint. The interior Payment Unit boundary is the road as shown on the Timber Sale Map. The painted boundary line trees are not Included Timber and are to be protected.

2 - Timber Specifications

2.1 - Included Timber

2.1.3 - Cut Tree Marked Unit(s) (12/08)

Within Payment Unit(s) 1 & 2, all trees are designated for cutting when marked with orange paint above and below stump height, regardless of merchantability.

2.2 - Utilization

2.2.5 - Limbed Tree Skidding (12/24)

The skidding of whole trees or tree segments with limbs attached is prohibited, unless approved by the Unit Manager or his/her representative.

2.2.6 - Roundwood Operation Required (3/21)

The skidding of whole trees or tree segments with limbs attached is prohibited. All products must be produced as roundwood and forwarded to existing roads or landing areas in final product length.

3 - Payments

3.3 - Pre-measured Sales

3.3.4 - Dividing Payment Units (7/14)

Payment Unit(s) 1 may be divided at the request of the Purchaser and upon approval of the Unit Manager. Dividing Payment Units is a contract modification which requires a Timber Sale Contract Amendment. There will be only one division per Payment Unit.

4 - Transportation

4.1 - Construction

4.1.12 - No New Roads (1/12)

No new roads will be permitted in any Payment Unit. All operations are limited to existing roads. Only skid trails will be allowed.

4.2 - Maintenance

4.2.5 - Two Wheel Drive Condition (2/04)

All existing trail roads on and adjacent to the Sale Area must be passable by two-wheel drive traffic for the duration of the sale.

5 - Operations

5.1 - Notification

5.1.1 - Pre-sale Conference (10/16)

A pre-sale conference on site between the Purchaser and Sale Administrator is required prior to beginning any operations to determine landing and road locations. The Unit Manager or his/her representative must be contacted at least 3 days in advance to schedule the conference.

5.2 - Conduct of Operations

5.2.3 - Operating Restrictions

5.2.3.3 - Bark Slippage Restriction (3/09)

Within Payment Unit(s) , unless changed by written agreement, cutting and skidding are not permitted during the period of April 15 to July 15. This restriction is because of bark slippage. This restriction can be waived if producer can operate without damage during this period.

5.2.40 - Pathway Protection (10/10)

The NCT hiking trail runs through sale as shown on the Timber Sale Map. Do not cut trees or damage posts with blue/orange pathway markers. Maintain a 20-foot-wide slash, debris, and rut free zone daily, using the pathway as the centerline. Do not run equipment down the pathway. Skidding across the trail may only occur in locations approved by the Sale Administrator.

5.3 - Stream Protection

5.3.2 - Parking Equipment Near Water (10/23)

Within Payment Unit(s) the parking of or storage of equipment is prohibited within 100 feet of water bodies or ground water supplies. All equipment, when not in use for harvest operations, must be parked a minimum of 100 feet away from water sources (streams, rivers, lakes, ponds, vernal pools, ground water sources) and 50 feet away from slopes leading to water sources and/or riparian areas. This restriction is for preventing unforeseen oil and/or fluid leaks from contaminating water bodies and/or ground water supplies.

6 - Safety and Fire Prevention

6.2 - Signing

6.2.1 - Road Posting (10/20)

The Purchaser is responsible for posting and maintaining caution signs on timber access roads near landing prior to beginning operations. The road must be posted at appropriate distances from the Sale Area to warn of logging activity and truck traffic. Signs must be removed when harvest operations are suspended or completed. The Purchaser will provide these signs.

6.2.3 - Recreational Trail Posting (10/20)

The Purchaser is responsible for posting and maintaining caution signs on the NCT hiking trail prior to beginning operations. The trail must be posted at appropriate distances from the Sale Area to warn of logging activity and truck traffic at both ends of the trail. Signs must be removed when harvest operations are suspended or completed. The Purchaser will provide these signs.



TIMBER SALE MAP

This information provided by authority of Part 525, 1994 PA 451, as amended.

Sale Number
61-016-25

Date
09/03/2025

Forest Management Unit	County	Mapped By: Ventimiglia	Scale	Page	Of
Traverse City Mgt Unit	Grand Traverse	Cruised By: Ventimiglia	1:10,000	1	1

Township	Range	Section(s) and Subdivision(s)
25N	09W	Sec. 23 S1/2NW,SWNE,N1/2SW,NWSE;

Cover Type

A = Aspen	J = Jack Pine	O = Oak	U = Upland Brush
B = Paper Birch	K = Rock	P = Lowland Poplar	UM = Upland Mix Forest
C = Cedar	L = Lowland Brush	Q = Mixed Swamp Conifer	V = Bog or Marsh
D = Treed Bog	LM = Lowland Mix Forest	R = Red Pine	W = White Pine
E = Swamp Hardwoods	M = Maple, Beech, Birch	S = Black Spruce	X = Non Stocked
F = Spruce/Fir	MC = Mixed Conifer	T = Tamarack	Y = Sand
G = Grass	MD = Mixed Deciduous	Z = Water	
H = Hemlock	N = Marsh		

Density

0 = Non Stocked	5 = Pole Timber Medium
1 = Seedling Sapling Poor	6 = Pole Timber Well
2 = Seedling Sapling Medium	7 = Saw Timber Poor
3 = Seedling Sapling Well	8 = Saw Timber Medium
4 = Pole Timber Poor	9 = Saw Timber Well

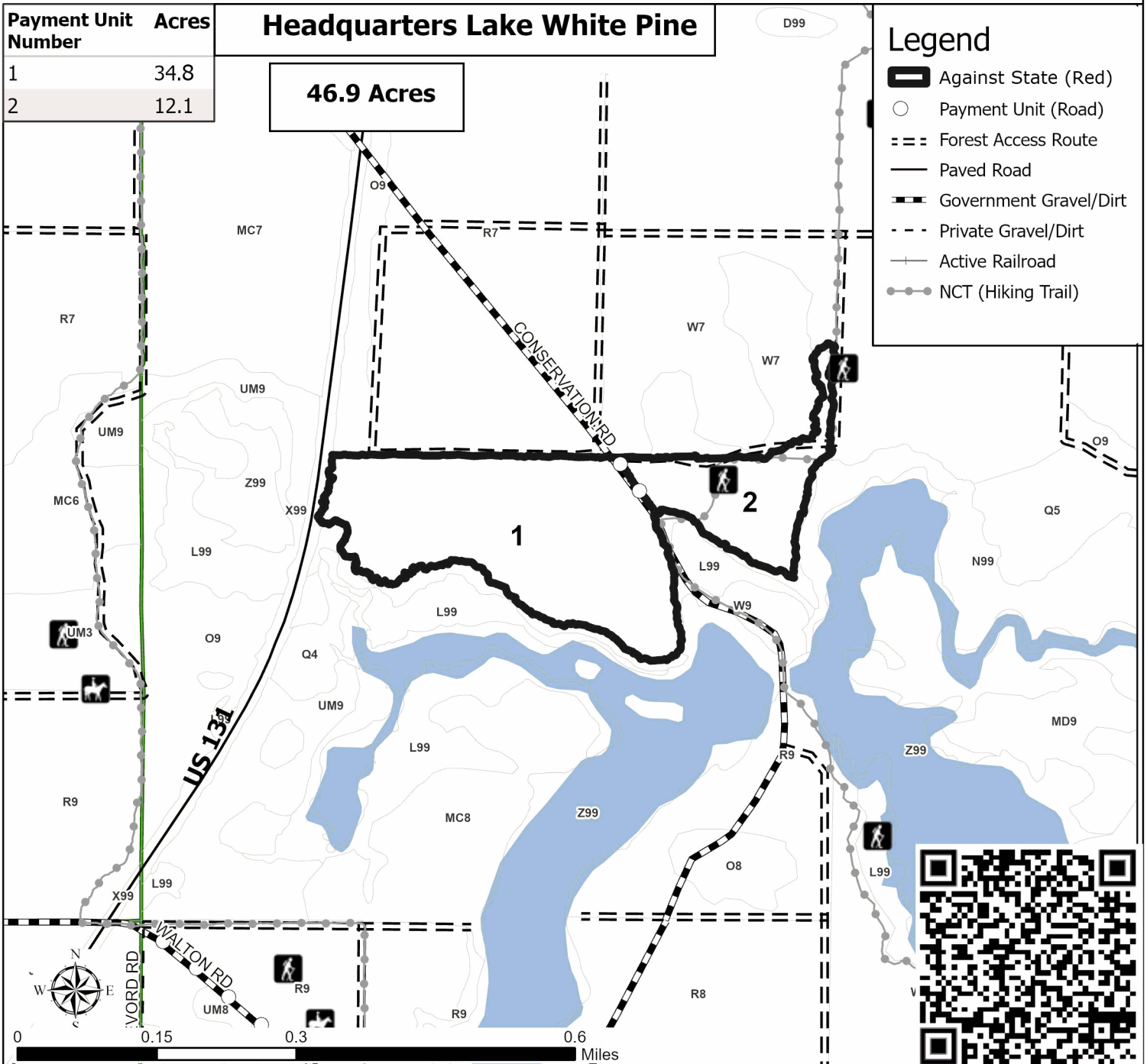
Payment Unit Number	Acres
1	34.8
2	12.1

Headquarters Lake White Pine

46.9 Acres

Legend

- Against State (Red)
- Payment Unit (Road)
- Forest Access Route
- Paved Road
- Government Gravel/Dirt
- Private Gravel/Dirt
- Active Railroad
- NCT (Hiking Trail)



TIMBER SALE INFORMATION

Headquarters Dam Pine (61-036-25)

T25N, R09W, SEC. 23; T25N, R09W, SEC. 24; T25N, R09W, SEC. 25; T25N, R09W, SEC. 26.
Grand Traverse County (Advertised Price \$254,569.90)

SALE NOTE: A recreation site such as a trail, pathway, or campground is within the sale area or the vicinity. Certain restrictions/specifications may be applicable including time restrictions.

A timber sale contract for this lump sum, sealed bid timber sale will be awarded to the responsible bidder offering the highest sealed bid price. All units of volume listed below were estimated using the Inventory Manager computer program and the new Michigan taper model. Bids must be at or above the following advertised price for each product and species:

<u>PRODUCTS & SPECIES</u>	<u>ESTIMATED UNITS*</u>		<u>ADVERTISED PRICE</u>
Sawtimber			
Black/Red (Hybrid) Oak	261.6	MBF	\$ 114.00 / MBF
Red Pine	714.6	MBF	\$ 136.00 / MBF
White Oak	102.0	MBF	\$ 65.00 / MBF
White Pine	489.4	MBF	\$ 76.00 / MBF
Pulpwood			
B. T. Aspen	84	Cords	\$ 23.55 / Cord
Balsam Fir	3	Cords	\$ 31.60 / Cord
Mixed Oak	499	Cords	\$ 30.05 / Cord
Red Maple	3	Cords	\$ 19.60 / Cord
Red Pine	809	Cords	\$ 62.75 / Cord
White Pine	570	Cords	\$ 27.80 / Cord

* The total volume is statistically estimated within plus (+) or minus (-) 8.95 percent. There are an estimated 5,640 cords on this timber sale, plus or minus 505 cords at the 95% confidence level. The estimated units are final and not subject to adjustment. Prospective bidders are urged to examine this timber and to make their own estimates of quantity and quality.

BOND AND PAYMENT SCHEDULE:

1. A bond in the amount of \$12,728.00 to insure faithful performance of the conditions of the contract will be deposited by the successful bidder within 21 days of the sale award.
2. Cutting in any sale or unit without the required advance payment would be considered a trespass.
3. Total payment must be paid in advance or according to the following schedule :
 - (a) Ten percent (10%) of the sale value must be paid within 21 days of the sale award.
 - (b) The 10% down payment will be credited towards the first unit cut.
 - (c) Payment for each of the following units must be made before cutting begins in that unit:

PAYMENT UNIT NUMBER	PERCENT OF TOTAL SALE VALUE
01	8.5%
02	7.4%
03	20.0%
04	23.2%
05	15.7%
06	14.7%
07	10.5%
4. If no cutting takes place, the 10% down payment will not be refunded.
5. Operations on the contract issued will terminate on 12/31/2028.

SALE STATISTICS

Volumes were calculated in cubic feet using the Michigan taper model. Cubic foot volume includes all wood inside bark for the product indicated. For display purposes, cubic feet were converted to cords and MBF using a simple conversion factor, e.g. 79 cubic feet per cord and 185 cubic feet per MBF. The cubic foot volumes are precise; the cords and MBF volumes are not. Cubic foot volume cannot be directly converted to cords or boards with precision.

SALE VOLUMES

The total estimated sale volume may not equal the sum of the species/products due to the nature of statistical calculations associated with double sampling methodology.

VOLUME			STATISTICAL RANGE IN CORDS	
TOTAL CUBIC FEET	TOTAL CORDS	PERCENT ERROR	MINIMUM	MAXIMUM
445,523	5,640	8.95%	5,135	6,144

VDU VOLUMES

A VDU is a Volume Determination Unit. Volumes and their associated statistics are calculated at the VDU level and summarized to the sale level. There is often a one to one relationship between a VDU and a Payment Unit, but not always, depending on the cruise design. Refer to the VDU TO PAYMENT UNIT table.

	VOLUME			RANGE IN CORDS	
VDU	TOTAL CUBIC FEET	TOTAL CORDS	PERCENT ERROR	MINIMUM	MAXIMUM
77	93,844	1,188	17.54%	980	1,396
83	88,279	1,117	17.46%	922	1,313
99	263,399	3,334	12.61%	2,914	3,755
TOTAL:	445,523	5,640		4,816	6,463

VDU TO PAYMENT UNIT

When a VDU is associated with more than one Payment Unit (PU), the VDU volumes are assigned to the PU based on acres of the VDU within the PU.

VDU	VDU ACRES	PU	PU ACRES
TOTAL:			

DESCRIPTION OF TIMBER BY PAYMENT UNIT (PU)

PU	MARKET GROUP	PRODUCT	QUANTITY	UNIT	ACRES	ADVERTISE PRICE
1	Black/Red (Hybrid	Sawtimber	30.5	MBF	20.9	\$21,536.95
	Red Pine		10.9	MBF		
	White Oak		27.4	MBF		
	White Pine		101.0	MBF		
	Mixed Oak	Pulpwood	70	Cords		
	/Red (Hybrid) Oak		31	Cords		
	White Oak		39	Cords		
	Red Maple		2	Cords		
	Red Maple	Sawtimber	0.3	MBF		
	Red Maple	Pulpwood	1	Cords		
	Red Pine		43	Cords		
	White Pine		82	Cords		
2	Black/Red (Hybrid	Sawtimber	26.8	MBF	18.4	\$18,907.10
	Red Pine		9.6	MBF		
	White Oak		24.1	MBF		
	White Pine		88.9	MBF		
	Mixed Oak	Pulpwood	61	Cords		
	/Red (Hybrid) Oak		27	Cords		
	White Oak		34	Cords		
	Red Maple		2	Cords		
	Red Maple	Sawtimber	0.3	MBF		
	Red Maple	Pulpwood	1	Cords		
	Red Pine		37	Cords		
	White Pine		73	Cords		
3	Black/Red (Hybrid	Sawtimber	61.4	MBF	34.1	\$50,875.40
	Red Pine		133.3	MBF		
	White Oak		15.9	MBF		
	White Pine		101.0	MBF		
	B. T. Aspen	Pulpwood	8	Cords		
	Mixed Oak		104	Cords		
	/Red (Hybrid) Oak		69	Cords		
	White Oak		35	Cords		
	Red Pine		162	Cords		
	White Pine		128	Cords		
4	Black/Red (Hybrid	Sawtimber	71.2	MBF	39.6	\$59,024.95
	Red Pine		154.9	MBF		
	White Oak		18.5	MBF		
	White Pine		117.3	MBF		
	B. T. Aspen	Pulpwood	9	Cords		
	Mixed Oak		121	Cords		
	/Red (Hybrid) Oak		80	Cords		
	White Oak		41	Cords		
	Red Pine		187	Cords		
	White Pine		149	Cords		
5	Black/Red (Hybrid	Sawtimber	48.1	MBF	26.7	\$39,881.85
	Red Pine		104.4	MBF		
	White Oak		12.4	MBF		
	White Pine		79.1	MBF		
	B. T. Aspen	Pulpwood	6	Cords		
	Mixed Oak		82	Cords		
	/Red (Hybrid) Oak		54	Cords		
	White Oak		28	Cords		
	Red Pine		127	Cords		
	White Pine		101	Cords		
6	Black/Red (Hybrid	Sawtimber	13.8	MBF	22.9	\$37,531.25
	Red Pine		175.7	MBF		

DESCRIPTION OF TIMBER BY PAYMENT UNIT (PU), CON'T

PU	MARKET GROUP	PRODUCT	QUANTITY	UNIT	ACRES	ADVERTISE PRICE
6 con't	White Oak	Sawtimber	2.2	MBF		
	White Pine		1.2	MBF		
	B. T. Aspen	Pulpwood	36	Cords		
	Balsam Fir		2	Cords		
	Mixed Oak		36	Cords		
	/Red (Hybrid) Oak		31	Cords		
	White Oak		5	Cords		
	Red Pine		147	Cords		
	White Pine		22	Cords		
7	Black/Red (Hybrid	Sawtimber	9.8	MBF	16.4	\$26,832.00
	Red Pine		125.8	MBF		
	White Oak		1.5	MBF		
	White Pine		0.9	MBF		
	B. T. Aspen	Pulpwood	25	Cords		
	Balsam Fir		1	Cords		
	Mixed Oak		25	Cords		
	/Red (Hybrid) Oak		22	Cords		
	White Oak		3	Cords		
	Red Pine		106	Cords		
	White Pine		15	Cords		
TOTAL:			1,567.6	MBF		
TOTAL:			1,969	Cords		

Sale Specific Conditions & Requirements

Sale Name: Headquarters Dam Pine

Sale Number: 61-036-25 Seq#: 1

1 - Sale Area

1.2 - Boundaries

1.2.1 - Painted Boundaries (9/19)

The sale boundary is marked in red and blue paint or are unmarked and identified by two tracks. Exterior sale boundary lines against private property are marked with blue paint. Exterior sale boundary lines against state are marked with red paint. Interior Payment Unit boundaries are the two tracks as shown on the Timber Sale Map. The painted boundary line trees are not Included Timber and are to be protected.

2 - Timber Specifications

2.1 - Included Timber

2.1.1 - Clearcut Unit(s) with Unmerchantable Trees (6/14)

Within Payment Unit(s) 6 and 7, cut all trees that are two (2) inches or more at DBH, except do not cut white pine 4 inches in diameter and smaller or white pine greater than 20 inches in diameter.

2.1.5 - Overstory Removal Unit(s) (8/11)

Within Payment Unit(s) 1-5, all trees which meet minimum piece specifications in 2.2 Utilization, are designated for cutting, except do not cut any white pine 30 inches in diameter and larger. In addition, cut all aspen regardless of merchantability.

2.2 - Utilization

2.2.5 - Limbed Tree Skidding (12/24)

The skidding of whole trees or tree segments with limbs attached is prohibited, in Payment Units 1 and 2, unless approved by the Unit Manager or his/her representative.

2.2.6 - Roundwood Operation Required (3/21)

The skidding of whole trees or tree segments with limbs attached is prohibited within Payment Unit(s) 1 and 2. All products must be produced as roundwood and forwarded to existing roads or landing areas in final product length. This spec is due to amount of regeneration being protected in these units. Dragging of full trees would cause more damage to residual.

3 - Payments

3.4 - Damaged Timber

3.4.1 - Damaged Timber (12/24)

General Condition and Requirement 3.4 Damaged Timber, defines liquidated damages for undesignated live merchantable trees which are cut or injured. In addition, extreme care should be taken to avoid damage to tree seedlings and saplings that are designated for protection.

Within the Sale Area, if more than 30% of the tree seedlings or saplings (1/4" to 4.5" DBH) within a specified portion of the Sale Area are damaged, liquidated damages will be assessed at \$250 per acre for all acreage within that specified portion of the Sale Area that was damaged.

4 - Transportation

4.1 - Construction

4.1.12 - No New Roads (1/12)

No new roads will be permitted. All operations are limited to existing roads. Only skid trails will be allowed.

4.2 - Maintenance

4.2.5 - Two Wheel Drive Condition (2/04)

All existing trail roads on and adjacent to the Sale Area must be passable by two-wheel drive traffic for the duration of the sale.

5 - Operations

5.1 - Notification

5.1.1 - Pre-sale Conference (10/16)

A pre-sale conference on site between the Purchaser and Sale Administrator is required prior to beginning any operations, to determine landing and road locations. The Unit Manager or his/her representative must be contacted at least 3 days in advance to schedule the conference.

5.2 - Conduct of Operations

5.2.3 - Operating Restrictions

5.2.3.4 - Oak Wilt Restriction, No Exceptions (1/18)

Within Payment Unit(s) 1-5, cutting, skidding, hauling within the sale and brushing of access roads to the sale are not permitted during the period of April 15 to July 15. No exceptions will be granted. This is necessary to reduce the spread of oak wilt.

5.4 - Soil Protection

5.4.1 - Rutting Restriction, General (7/16)

In addition, operations are to cease immediately if equipment and weather conditions result in rutting on skid trails which are 12 inches or greater in depth and 50 feet in length. The Unit Manager or his/her representative may restrict hauling and/or skidding if ruts exceed the specified depth. With the Unit Manager or his/her representative's approval, the Purchaser may return to the area when the risk of rutting has decreased.

5.8 - Protection of Endangered Species

5.8.8 - Protected Species, Other (2/12)

In order to protect an active eagle nest, no timber sale activity is allowed in Payment Units 6 or 7 from January 1 to August 31.

6 - Safety and Fire Prevention

6.2 - Signing

6.2.1 - Road Posting (10/20)

The Purchaser is responsible for posting and maintaining caution signs on timber access roads near landings prior to beginning operations. The road must be posted at appropriate distances from the Sale Area to warn of logging activity and truck traffic. Signs must be removed when harvest operations are suspended or completed. The Purchaser will provide these signs.

6.2.3 - Recreational Trail Posting (10/20)

The Purchaser is responsible for posting and maintaining caution signs on the North Country Hiking Trail when working in Payment Units 1 and 2 prior to beginning operations. The trail must be posted at appropriate distances from the Sale Area to warn of logging activity and truck traffic at both ends of the trail. Signs must be removed when harvest operations are suspended or completed. The Purchaser will provide these signs.



TIMBER SALE MAP

This information provided by authority of Part 525, 1994 PA 451, as amended.

Sale Number
61-036-25

Date
06/27/2025

Forest Management Unit	County	Mapped By: Ventimiglia	Scale	Page	Of
Traverse City Mgt Unit	Grand Traverse	Cruised By: Ventimiglia	1:15,840	1	1

Township	Range	Section(s) and Subdivision(s)
25N	09W	Sec. 23 S1/2SE; Sec. 24 SWNE,N1/2SW,N1/2SE,SWSE; Sec. 25 NW; Sec. 26 NE;

Cover Type

A = Aspen	J = Jack Pine	O = Oak	U = Upland Brush
B = Paper Birch	K = Rock	P = Lowland Poplar	UM = Upland Mix Forest
C = Cedar	L = Lowland Brush	Q = Mixed Swamp Conifer	V = Bog or Marsh
D = Treed Bog	LM = Lowland Mix Forest	R = Red Pine	W = White Pine
E = Swamp Hardwoods	M = Maple, Beech, Birch	S = Black Spruce	X = Non Stocked
F = Spruce/Fir	MC = Mixed Conifer	T = Tamarack	Y = Sand
G = Grass	MD = Mixed Deciduous		Z = Water
H = Hemlock	N = Marsh		

Density

0 = Non Stocked	5 = Pole Timber Medium
1 = Seedling Sapling Poor	6 = Pole Timber Well
2 = Seedling Sapling Medium	7 = Saw Timber Poor
3 = Seedling Sapling Well	8 = Saw Timber Medium
4 = Pole Timber Poor	9 = Saw Timber Well

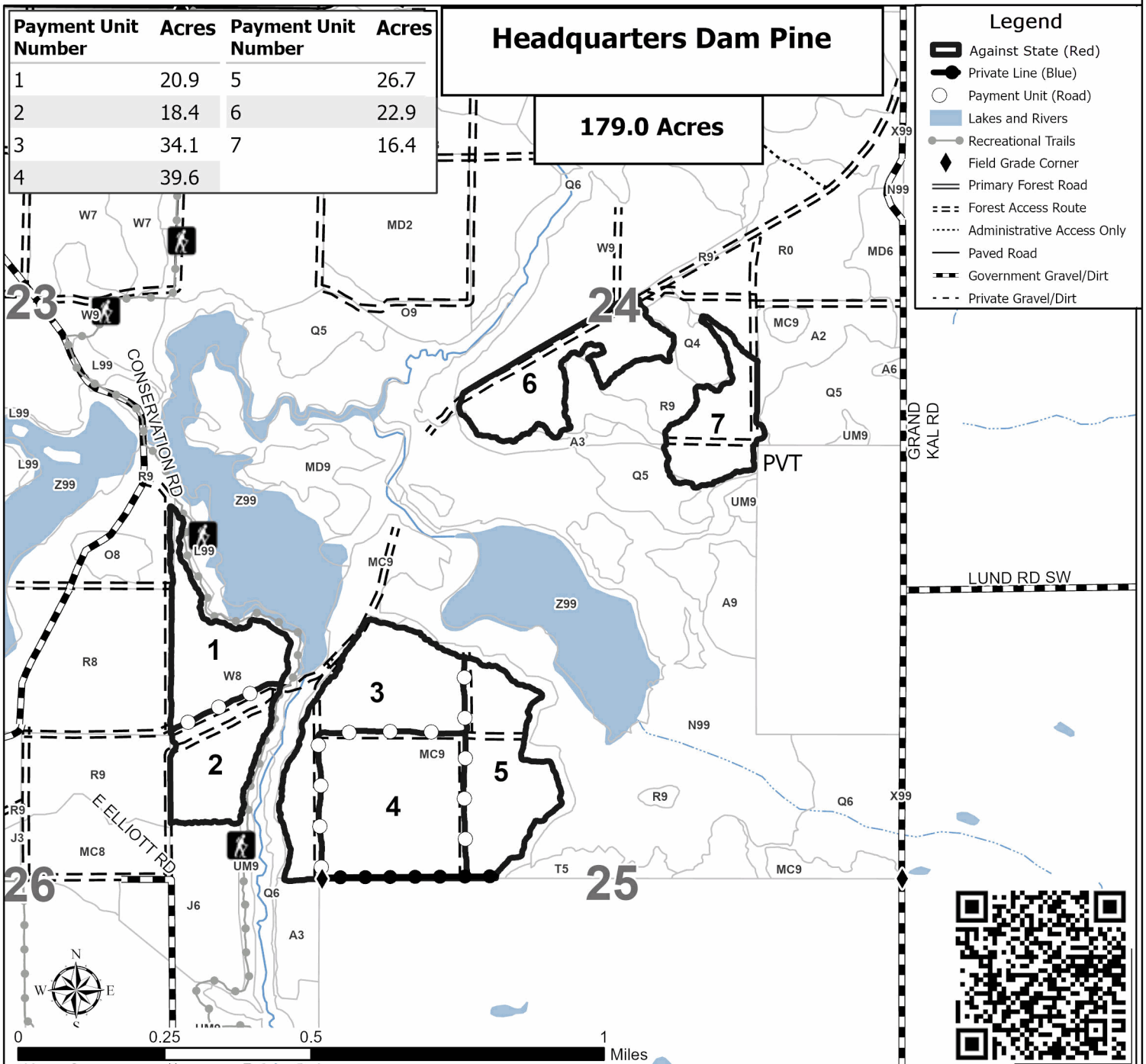
Payment Unit Number	Acres	Payment Unit Number	Acres
1	20.9	5	26.7
2	18.4	6	22.9
3	34.1	7	16.4
4	39.6		

Headquarters Dam Pine

179.0 Acres

Legend

- Against State (Red)
- Private Line (Blue)
- Payment Unit (Road)
- Lakes and Rivers
- Recreational Trails
- Field Grade Corner
- Primary Forest Road
- Forest Access Route
- Administrative Access Only
- Paved Road
- Government Gravel/Dirt
- Private Gravel/Dirt



TIMBER SALE INFORMATION

Adios Hardwoods (61-038-25)
T27N, R14W, SEC. 16.
Benzie County (Advertised Price \$257,666.65)

A timber sale contract for this lump sum, sealed bid timber sale will be awarded to the responsible bidder offering the highest sealed bid price. All units of volume listed below were estimated using the Inventory Manager computer program and the new Michigan taper model. Bids must be at or above the following advertised price for each product and species:

<u>PRODUCTS & SPECIES</u>	<u>ESTIMATED UNITS*</u>	<u>ADVERTISED PRICE</u>
Sawtimber		
B. T. Aspen	100.6 MBF	\$ 124.00 / MBF
Beech	73.9 MBF	\$ 186.00 / MBF
Black Cherry	68.5 MBF	\$ 153.00 / MBF
Red Maple	310.2 MBF	\$ 112.00 / MBF
Sugar Maple	512.8 MBF	\$ 290.00 / MBF
Pulpwood		
B. T. Aspen	43 Cords	\$ 23.55 / Cord
Mixed Hardwood	1,843 Cords	\$ 19.60 / Cord
Red Pine	6 Cords	\$ 62.75 / Cord

* The total volume is statistically estimated within plus (+) or minus (-) 14.82 percent. There are an estimated 4,390 cords on this timber sale, plus or minus 651 cords at the 95% confidence level. The estimated units are final and not subject to adjustment. Prospective bidders are urged to examine this timber and to make their own estimates of quantity and quality.

BOND AND PAYMENT SCHEDULE:

- A bond in the amount of \$12,883.00 to insure faithful performance of the conditions of the contract will be deposited by the successful bidder within 21 days of the sale award.
- Cutting in any sale or unit without the required advance payment would be considered a trespass.
- Total payment must be paid in advance or according to the following schedule :
 - Ten percent (10%) of the sale value must be paid within 21 days of the sale award.
 - The 10% down payment will be credited towards the first unit cut.
 - Payment for each of the following units must be made before cutting begins in that unit:

PAYMENT UNIT NUMBER	PERCENT OF TOTAL SALE VALUE
01	50.2%
02	49.8%
- If no cutting takes place, the 10% down payment will not be refunded.
- Operations on the contract issued will terminate on 06/30/2028.

SALE STATISTICS

Volumes were calculated in cubic feet using the Michigan taper model. Cubic foot volume includes all wood inside bark for the product indicated. For display purposes, cubic feet were converted to cords and MBF using a simple conversion factor, e.g. 79 cubic feet per cord and 185 cubic feet per MBF. The cubic foot volumes are precise; the cords and MBF volumes are not. Cubic foot volume cannot be directly converted to cords or boards with precision.

SALE VOLUMES

The total estimated sale volume may not equal the sum of the species/products due to the nature of statistical calculations associated with double sampling methodology.

VOLUME		STATISTICAL RANGE IN CORDS		
TOTAL CUBIC FEET	TOTAL CORDS	PERCENT ERROR	MINIMUM	MAXIMUM
346,837	4,390	14.82%	3,740	5,041

VDU VOLUMES

A VDU is a Volume Determination Unit. Volumes and their associated statistics are calculated at the VDU level and summarized to the sale level. There is often a one to one relationship between a VDU and a Payment Unit, but not always, depending on the cruise design. Refer to the VDU TO PAYMENT UNIT table.

VDU	VOLUME		PERCENT ERROR	RANGE IN CORDS	
	TOTAL CUBIC FEET	TOTAL CORDS		MINIMUM	MAXIMUM
91	346,837	4,390	14.82%	3,739	5,041
TOTAL:	346,837	4,390		3,739	5,041

VDU TO PAYMENT UNIT

When a VDU is associated with more than one Payment Unit (PU), the VDU volumes are assigned to the PU based on acres of the VDU within the PU.

VDU	VDU ACRES	PU	PU ACRES
TOTAL:			

DESCRIPTION OF TIMBER BY PAYMENT UNIT (PU)

PU	MARKET GROUP	PRODUCT	QUANTITY	UNIT	ACRES	ADVERTISE PRICE
1	B. T. Aspen	Sawtimber	50.5	MBF	37.6	\$129,366.15
	Beech		37.1	MBF		
	Black Cherry		34.4	MBF		
	Red Maple		155.7	MBF		
	Sugar Maple		257.4	MBF		
	B. T. Aspen	Pulpwood	22	Cords		
	Mixed Hardwood		926	Cords		
	Yellow Birch	Sawtimber	2.3	MBF		
	Beech	Pulpwood	93	Cords		
	Black Cherry		35	Cords		
	Red Maple		171	Cords		
	Sugar Maple		621	Cords		
	Yellow Birch		1	Cords		
	Red Pine		3	Cords		
	Red Pine	Sawtimber	0.5	MBF		
	Red Pine	Pulpwood	2	Cords		
2	B. T. Aspen	Sawtimber	50.1	MBF	37.3	\$128,300.50
	Beech		36.8	MBF		
	Black Cherry		34.1	MBF		
	Red Maple		154.5	MBF		
	Sugar Maple		255.4	MBF		
	B. T. Aspen	Pulpwood	21	Cords		
	Mixed Hardwood		917	Cords		
	Yellow Birch	Sawtimber	2.2	MBF		
	Beech	Pulpwood	92	Cords		
	Black Cherry		35	Cords		
	Red Maple		169	Cords		
	Sugar Maple		616	Cords		
	Yellow Birch		1	Cords		
	Red Pine		3	Cords		
	Red Pine	Sawtimber	0.4	MBF		
	Red Pine	Pulpwood	2	Cords		
TOTAL:			1,066.0	MBF		
TOTAL:			1,892	Cords		

Sale Specific Conditions & Requirements

Sale Name: Adios Hardwoods

Sale Number: 61-038-25 Seq#: 1

1 - Sale Area

1.2 - Boundaries

1.2.1 - Painted Boundaries (9/19)

The sale boundary and Payment Unit boundaries are marked and identified by red and yellow paint. Exterior sale boundary lines against state are marked with red paint. Interior Payment Unit boundaries are marked with yellow paint. The painted boundary line trees are not Included Timber and are to be protected. Yellow painted trees designating an interior Payment Unit boundary are only to be cut when all surrounding Payment Units have been paid.

2 - Timber Specifications

2.1 - Included Timber

2.1.1 - Clearcut Unit(s) with Unmerchantable Trees (6/14)

Within Payment Unit(s) 1 and 2, cut all species no matter the merchantability of trees that are any size or more at DBH.

2.2 - Utilization

2.2.2 - Chipping Required (12/24)

Payment Unit 1 and 2 must be chip harvested to facilitate subsequent planting operations. The Purchaser has the option to produce sawlogs or pulpwood bolts, but the remaining portion of the trees must be chipped and hauled. The requirement to retain approximately 1/6 to 1/3 of treetops and limbs less than four (4) inches in diameter does not apply (G. C. & R. 2.2).

2.2.3 - Stump Heights (12/24)

Stump heights within the Sale Area shall not exceed six (6) inches for all trees. This is in order to facilitate planting operations.

4 - Transportation

4.1 - Construction

4.1.12 - No New Roads (1/12)

No new roads will be permitted in any Payment Unit. All operations are limited to existing roads. Only Skid trails will be allowed.

4.2 - Maintenance

4.2.5 - Two Wheel Drive Condition (2/04)

All existing trail roads on and adjacent to the Sale Area must be passable by two-wheel drive traffic for the duration of the sale.

5 - Operations

5.1 - Notification

5.1.1 - Pre-sale Conference (10/16)

A pre-sale conference on site between the Purchaser and Sale Administrator is required prior to beginning any operations to determine landing and road locations. The Unit Manager or his/her representative must be contacted at least 3 days in advance to schedule the conference.

5.1.4 - Post-Sale Conference (10/16)

A post-sale conference on site between the Purchaser and sale administrator is required 5 days prior to the completion of active logging operations to determine clean-up and repair of landings, road edges, and the fulfillment of other contract specifications.

5.2 - Conduct of Operations

5.2.38 - No Decking Against Live Trees (2/04)

Cut products may not be decked against unmarked or designated leave trees.

6 - Safety and Fire Prevention

6.2 - Signing

6.2.1 - Road Posting (10/20)

The Purchaser is responsible for posting and maintaining caution signs on adjacent roads prior to beginning operations. The road must be posted at appropriate distances from the Sale Area to warn of logging activity and truck traffic. Signs must be removed when harvest operations are suspended or completed. The Purchaser will provide these signs.



TIMBER SALE MAP

This information provided by authority of Part 525, 1994 PA 451, as amended.

Sale Number

61-038-25

Date

08/12/2025

Forest Management Unit

County

Mapped By: Hurin

Scale

Page

Of

Traverse City Mgt Unit

Benzie

Cruised By: Hurin, Ventimiglia, Bey

1:5,000

1

1

Township
27N

Range
14W

Section(s) and
Subdivision(s) Sec. 16 S1/2SW;

Cover Type

A = Aspen	J = Jack Pine	O = Oak	U = Upland Brush
B = Paper Birch	K = Rock	P = Lowland Poplar	UM = Upland Mix Forest
C = Cedar	L = Lowland Brush	Q = Mixed Swamp Conifer	V = Bog or Marsh
D = Treed Bog	LM = Lowland Mix Forest	R = Red Pine	W = White Pine
E = Swamp Hardwoods	M = Maple, Beech, Birch	S = Black Spruce	X = Non Stocked
F = Spruce/Fir	MC = Mixed Conifer	T = Tamarack	Y = Sand
G = Grass	MD = Mixed Deciduous	Z = Water	
H = Hemlock	N = Marsh		

Density

0 = Non Stocked	5 = Pole Timber Medium
1 = Seedling Sapling Poor	6 = Pole Timber Well
2 = Seedling Sapling Medium	7 = Saw Timber Poor
3 = Seedling Sapling Well	8 = Saw Timber Medium
4 = Pole Timber Poor	9 = Saw Timber Well

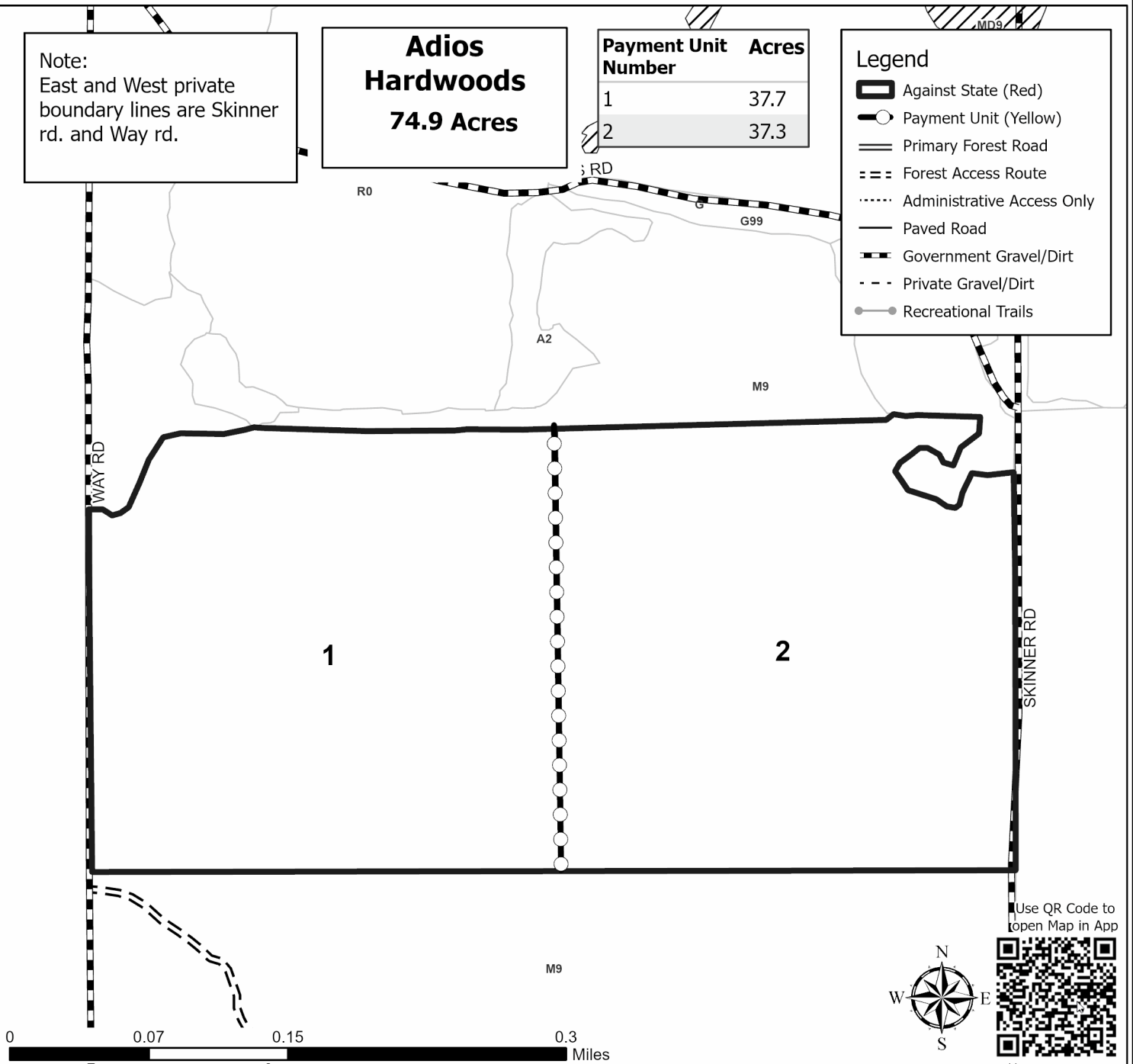
Note:
East and West private
boundary lines are Skinner
rd. and Way rd.

**Adios
Hardwoods
74.9 Acres**

Payment Unit Number	Acres
1	37.7
2	37.3

Legend

- Against State (Red)
- Payment Unit (Yellow)
- Primary Forest Road
- Forest Access Route
- Administrative Access Only
- Paved Road
- Government Gravel/Dirt
- Private Gravel/Dirt
- Recreational Trails



TIMBER SALE INFORMATION

South Branch Ferns (61-046-25)
T26N, R09W, SEC. 2.
Grand Traverse County (Advertised Price \$17,686.95)

A timber sale contract for this lump sum, sealed bid timber sale will be awarded to the responsible bidder offering the highest sealed bid price. All units of volume listed below were estimated using the Inventory Manager computer program and the new Michigan taper model. Bids must be at or above the following advertised price for each product and species:

<u>PRODUCTS & SPECIES</u>	<u>ESTIMATED UNITS*</u>		<u>ADVERTISED PRICE</u>
Sawtimber			
B. T. Aspen	15.6	MBF	\$ 124.00 / MBF
White Pine	38.1	MBF	\$ 76.00 / MBF
Pulpwood			
B. T. Aspen	262	Cords	\$ 23.55 / Cord
Jack Pine	38	Cords	\$ 15.25 / Cord
Mixed Hardwood	10	Cords	\$ 19.60 / Cord
Mixed Oak	22	Cords	\$ 30.05 / Cord
Red Pine	15	Cords	\$ 62.75 / Cord
White Pine	155	Cords	\$ 27.80 / Cord

* The total volume is statistically estimated within plus (+) or minus (-) 27.66 percent. There are an estimated 631 cords on this timber sale, plus or minus 175 cords at the 95% confidence level. The estimated units are final and not subject to adjustment. Prospective bidders are urged to examine this timber and to make their own estimates of quantity and quality.

BOND AND PAYMENT SCHEDULE:

- A bond in the amount of \$884.00 to insure faithful performance of the conditions of the contract will be deposited by the successful bidder within 21 days of the sale award.
- Cutting in any sale or unit without the required advance payment would be considered a trespass.
- Total payment must be paid in advance or according to the following schedule :
 - Ten percent (10%) of the sale value must be paid within 21 days of the sale award.
 - The 10% down payment will be credited towards the first unit cut.
 - Payment for each of the following units must be made before cutting begins in that unit:

PAYMENT UNIT NUMBER	PERCENT OF TOTAL SALE VALUE
01	26.2%
02	73.8%
- If no cutting takes place, the 10% down payment will not be refunded.
- Operations on the contract issued will terminate on 06/30/2028.

SALE STATISTICS

Volumes were calculated in cubic feet using the Michigan taper model. Cubic foot volume includes all wood inside bark for the product indicated. For display purposes, cubic feet were converted to cords and MBF using a simple conversion factor, e.g. 79 cubic feet per cord and 185 cubic feet per MBF. The cubic foot volumes are precise; the cords and MBF volumes are not. Cubic foot volume cannot be directly converted to cords or boards with precision.

SALE VOLUMES

The total estimated sale volume may not equal the sum of the species/products due to the nature of statistical calculations associated with double sampling methodology.

VOLUME		STATISTICAL RANGE IN CORDS		
TOTAL CUBIC FEET	TOTAL CORDS	PERCENT ERROR	MINIMUM	MAXIMUM
49,873	631	27.66%	457	806

VDU VOLUMES

A VDU is a Volume Determination Unit. Volumes and their associated statistics are calculated at the VDU level and summarized to the sale level. There is often a one to one relationship between a VDU and a Payment Unit, but not always, depending on the cruise design. Refer to the VDU TO PAYMENT UNIT table.

VDU	VOLUME		PERCENT ERROR	RANGE IN CORDS	
	TOTAL CUBIC FEET	TOTAL CORDS		MINIMUM	MAXIMUM
49	13,790	175	36.89%	110	239
949	36,083	457	36.14%	292	622
TOTAL:	49,873	631		402	861

VDU TO PAYMENT UNIT

When a VDU is associated with more than one Payment Unit (PU), the VDU volumes are assigned to the PU based on acres of the VDU within the PU.

VDU	VDU ACRES	PU	PU ACRES
TOTAL:			

DESCRIPTION OF TIMBER BY PAYMENT UNIT (PU)

PU	MARKET GROUP	PRODUCT	QUANTITY	UNIT	ACRES	ADVERTISE PRICE
1	B. T. Aspen	Sawtimber	2.4	MBF	17.4	\$4,638.90
	White Pine		13.2	MBF		
	B. T. Aspen	Pulpwood	39	Cords		
	Jack Pine		23	Cords		
	Mixed Hardwood		7	Cords		
	Black Cherry		5	Cords		
	Red Maple		2	Cords		
	Mixed Oak		6	Cords		
	Red Oak	Sawtimber	1.3	MBF		
	Red Oak	Pulpwood	3	Cords		
	White Pine		63	Cords		
2	B. T. Aspen	Sawtimber	13.2	MBF	18.3	\$13,048.05
	White Pine		24.9	MBF		
	B. T. Aspen	Pulpwood	223	Cords		
	Jack Pine		15	Cords		
	Mixed Hardwood		3	Cords		
	Black Cherry		3	Cords		
	Mixed Oak		16	Cords		
	Red Oak	Sawtimber	3.7	MBF		
	Red Oak	Pulpwood	5	Cords		
	White Oak		4	Cords		
	Red Pine		15	Cords		
	Red Pine	Sawtimber	3.0	MBF		
	Red Pine	Pulpwood	9	Cords		
		White Pine		92		
TOTAL:			53.7	MBF		
TOTAL:			502	Cords		

Sale Specific Conditions & Requirements

Sale Name: South Branch Ferns

Sale Number: 61-046-25 Seq#: 1

1 - Sale Area

1.2 - Boundaries

1.2.1 - Painted Boundaries (9/19)

The sale boundary and Payment Unit boundaries are marked and identified by red and yellow paint. Exterior sale boundary lines against state are marked with red paint. Interior Payment Unit boundaries are marked with yellow paint. The painted boundary line trees are not Included Timber and are to be protected unless marked with orange paint. Yellow painted trees designating an interior Payment Unit boundary are only to be cut when all surrounding Payment Units have been paid.

2 - Timber Specifications

2.1 - Included Timber

2.1.3 - Cut Tree Marked Unit(s) (12/08)

Within Payment Unit(s) 1, all trees are designated for cutting when marked with orange paint above and below stump height, regardless of merchantability. In addition, all jack pine, aspen, red maple and black cherry are designated for harvest, regardless of merchantability.

2.1.7 - Leave Tree Marked Unit(s) (6/14)

Within Payment Unit(s) 2, cut all trees that are two (2) inches or more at DBH, except do not cut trees marked with green paint above and below stump height.

4 - Transportation

4.1 - Construction

4.1.12 - No New Roads (1/12)

No new roads will be permitted in any Payment Unit. All operations are limited to existing roads. Only skid trails will be allowed.

5 - Operations

5.2 - Conduct of Operations

5.2.1 - Slash

5.2.1.8 - Slash Height (12/08)

No slash or tree tops may exceed 24 inches in height.

5.2.2 - Hazard Trees/Snags

5.2.2.1 - Den Trees (10/16)

Obvious hollow and/or den trees shall be protected and left standing unless they are a safety hazard.

5.2.3 - Operating Restrictions

5.2.3.4 - Oak Wilt Restriction, No Exceptions (1/18)

Within Payment Unit(s) 1 & 2, cutting, skidding, hauling within the sale and brushing of access roads to the sale are not permitted during the period of April 15 to July 15. No exceptions will be granted. This is necessary to reduce the spread of oak wilt.

5.2.29 - Shrub Protection (1/20)

Do not cut or damage hawthorn, witch-hazel or juneberry. These woody-shrub plants are highly beneficial to various wildlife species.

5.4 - Soil Protection

5.4.1 - Rutting Restriction, General (7/16)

Operations are to cease immediately if equipment and weather conditions result in rutting of roads and/or skid trails which are 12 inches or greater in depth and 50 feet in length. The Unit Manager or his/her representative may restrict hauling and/or skidding if ruts exceed the specified depth. With the Unit Manager or his/her representative's approval, the Purchaser may return to the area when the risk of rutting has decreased.



TIMBER SALE MAP

This information provided by authority of Part 525, 1994 PA 451, as amended.

Sale Number
61-046-25

Date
09/03/2025

Forest Management Unit	County	Mapped By: Patrick Cotant	Scale	Page	Of
Traverse City Mgt Unit	Grand Traverse	Cruised By: Cotant, Ventimiglia	1:7,920	1	1

Township	Range	Section(s) and Subdivision(s)
26N	09W	Sec. 2 N1/2NW,NWNE;

Cover Type

A = Aspen	J = Jack Pine	O = Oak	U = Upland Brush
B = Paper Birch	K = Rock	P = Lowland Poplar	UM = Upland Mix Forest
C = Cedar	L = Lowland Brush	Q = Mixed Swamp Conifer	V = Bog or Marsh
D = Treed Bog	LM = Lowland Mix Forest	R = Red Pine	W = White Pine
E = Swamp Hardwoods	M = Maple, Beech, Birch	S = Black Spruce	X = Non Stocked
F = Spruce/Fir	MC = Mixed Conifer	T = Tamarack	Y = Sand
G = Grass	MD = Mixed Deciduous		Z = Water
H = Hemlock	N = Marsh		

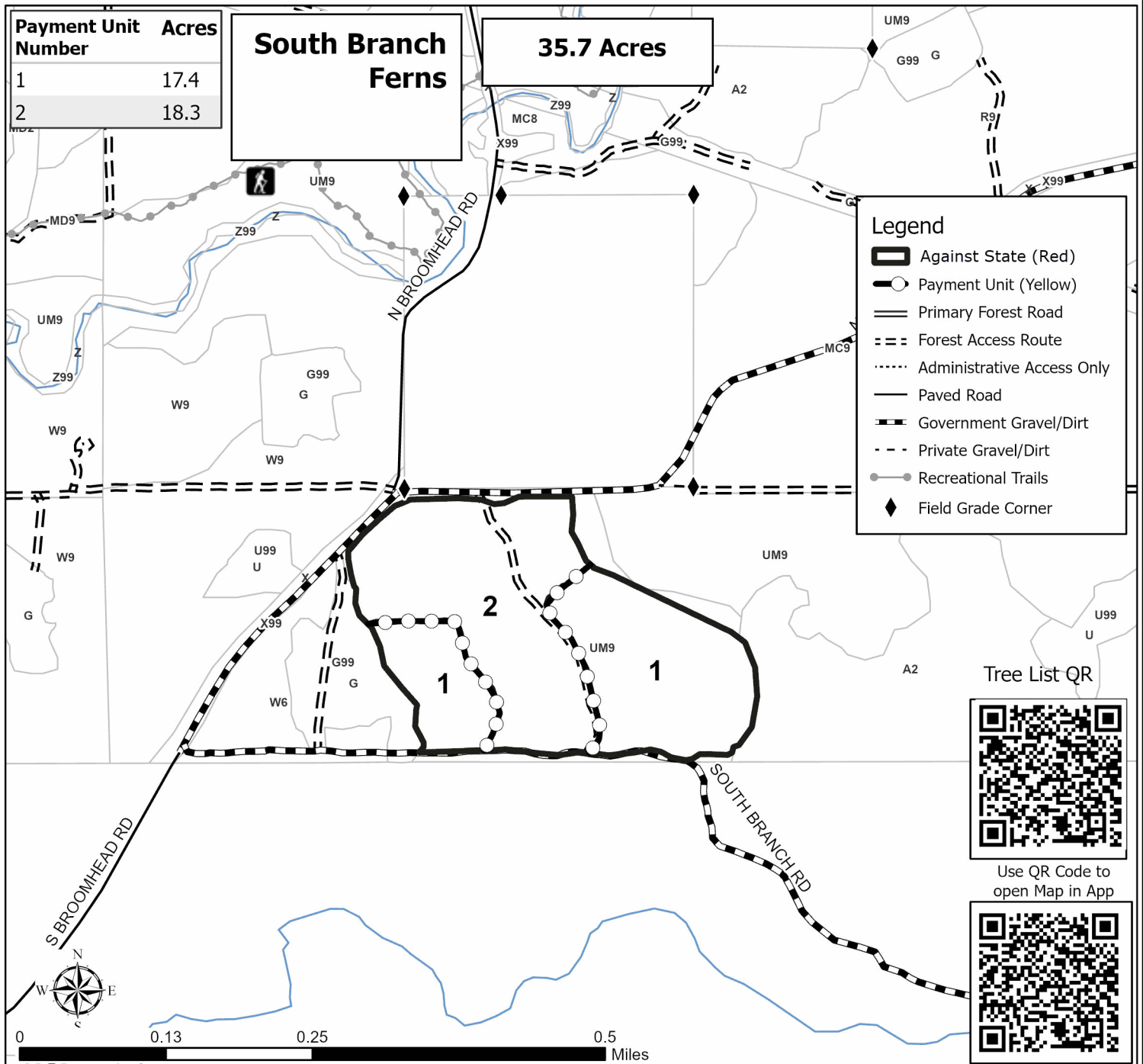
Density

0 = Non Stocked	5 = Pole Timber Medium
1 = Seedling Sapling Poor	6 = Pole Timber Well
2 = Seedling Sapling Medium	7 = Saw Timber Poor
3 = Seedling Sapling Well	8 = Saw Timber Medium
4 = Pole Timber Poor	9 = Saw Timber Well

Payment Unit Number	Acres
1	17.4
2	18.3

South Branch Ferns

35.7 Acres



Headquarters Lake White Pine (61-016-25)
T25N, R09W, SEC. 23; Grand Traverse COUNTY

In response to the notice of sale to be held 4:00 p.m. (local time) on November 6, 2025, I am hereby submitting my sealed bid (firm offer) for the following forest products to be cut. Bids for individual species must be at or above the advertised price. All non-responsive bid forms may be rejected.

<u>PRODUCTS & SPECIES</u>	<u>ESTIMATED VOLUME*</u>	<u>ADVERTISED PRICE</u>	<u>BID PRICE/UNIT</u>
Sawtimber			
Red Pine	1.6 MBF	\$ 140.00/MBF	\$ _____
White Pine	62.2 MBF	\$ 76.00/MBF	\$ _____
Pulpwood			
Mixed Hardwood	4 Cords	\$ 19.60/Cord	\$ _____
Red Pine	1 Cords	\$ 62.75/Cord	\$ _____
White Oak	6 Cords	\$ 30.05/Cord	\$ _____
White Pine	285 Cords	\$ 27.80/Cord	\$ _____

*The volumes are statistically estimated within plus (+) or minus (-) 20.19 percent at 95% confidence level. These estimated volumes are final and not subject to adjustment. Prospective bidders are urged to examine this timber and to make their own estimates of quantity and quality.

I understand that any or all bids may be rejected. All bids must be signed and all bid items must be bid or the bid form may be rejected. I also understand that consideration and awarding a contract will be based upon my past performance and ability to complete the contract based upon equipment and staffing subject to my control .

FEDERAL ID: ____ - ____ - ____ or SOCIAL SECURITY NUMBER: ____ - ____ - ____
Company or individual bidding: _____
Company representative's name: _____
Address: _____
City: _____ State: _____ Zip: _____

IF AVAILABLE, PLEASE PLACE THE PERSONALIZED LABEL FROM YOUR PROSPECTUS IN THE ABOVE BOX.

Individual or company representative's signature: _____ Date: _____

Phone number : _____ Email (optional): _____

**THE WINNING BIDDER MUST COMPLETE THE VERIFICATION OF WORKER'S DISABILITY COMPENSATION ACT
COMPLIANCE (ON REVERSE SIDE IF DOUBLE SIDED) WITHIN 21 DAYS OF SALE AWARD DATE**



TIMBER SALE VERIFICATION OF WORKER'S DISABILITY COMPENSATION ACT COMPLIANCE

As required by Act 317, P.A. 1969 (Worker's Compensation) and
Part 5 of Act 451 of 1994, as amended.

FOR DEPARTMENT USE ONLY

Sale Number (XX - XXX - XX - XX)

Forest Management Unit:

VERIFICATION OF WORKER'S DISABILITY COMPENSATION ACT COMPLIANCE

- This verification must be completed and submitted within 21 days of contract award and prior to the issuance of the timber sale contract.
- In addition, if boxes 2B or 2C are checked, then Notice of Exclusion or Certificate of Insurance must be submitted within twenty-one (21) days of the contract award and prior to the issuance of the timber sale contract.
- All information must be typed or printed except for written signatures.

Please Check Appropriate Categories:

1. My business is organized as (you **must** check one of the boxes below):
 - A. ☐ Sole Proprietorship (individual)
 - B. ☐ Partnership
 - C. ☐ Corporation
2. You **must** check one of the boxes below:
 - A. ☐ I certify my business is a sole proprietorship and it has no employees but the sole proprietor. I am not subject to the Worker's Compensation Laws.
 - B. ☐ I certify my business has satisfied its obligation to the Worker's Compensation Act through the use of an approved Notice of Exclusion (BWC-337, Rev. 5/96). I will provide a copy of the Notice of Exclusion within 21 days of the contract award. (For questions or a copy of the BWC-337, please call the Worker's Compensation Bureau at 517-322-1195).
 - C. ☐ I certify my business has a Worker's Compensation Policy. I will provide an original Certificate of Insurance within twenty-one (21) days of the contract award.
3. If you have checked item 2(A) or 2(B), you **must** indicate the number of **both** full-time and part-time employees, other than yourself, including family members and active partners (if none, you must enter "0").

_____ Full-time Employees

_____ Part-time Employees

Name of Business		Federal ID (or) Social Security No.
Address		Telephone ()
City	State	ZIP

I hereby certify that the above information is true and correct. I agree to notify the Michigan DNR of any changes that occur in factors affecting my coverage during any of my present and future operations.

Signature of Owner or Authorized Representative

Title

Date

Please complete the "SEALED BID" information on the next page

Headquarters Dam Pine (61-036-25)

T25N, R09W, SEC. 23; T25N, R09W, SEC. 24; T25N, R09W, SEC. 25; T25N,

In response to the notice of sale to be held 4:00 p.m. (local time) on November 6, 2025, I am hereby submitting my sealed bid (firm offer) for the following forest products to be cut. Bids for individual species must be at or above the advertised price. All non-responsive bid forms may be rejected.

<u>PRODUCTS & SPECIES</u>	<u>ESTIMATED VOLUME*</u>	<u>ADVERTISED PRICE</u>	<u>BID PRICE/UNIT</u>
Sawtimber			
Black/Red (Hybrid) Oak	261.6 MBF	\$ 114.00/MBF	\$ _____
Red Pine	714.6 MBF	\$ 136.00/MBF	\$ _____
White Oak	102.0 MBF	\$ 65.00/MBF	\$ _____
White Pine	489.4 MBF	\$ 76.00/MBF	\$ _____
Pulpwood			
B. T. Aspen	84 Cords	\$ 23.55/Cord	\$ _____
Balsam Fir	3 Cords	\$ 31.60/Cord	\$ _____
Mixed Oak	499 Cords	\$ 30.05/Cord	\$ _____
Red Maple	3 Cords	\$ 19.60/Cord	\$ _____
Red Pine	809 Cords	\$ 62.75/Cord	\$ _____
White Pine	570 Cords	\$ 27.80/Cord	\$ _____

*The volumes are statistically estimated within plus (+) or minus (-) 8.95 percent at 95% confidence level. These estimated volumes are final and not subject to adjustment. Prospective bidders are urged to examine this timber and to make their own estimates of quantity and quality.

I understand that any or all bids may be rejected. All bids must be signed and all bid items must be bid or the bid form may be rejected. I also understand that consideration and awarding a contract will be based upon my past performance and ability to complete the contract based upon equipment and staffing subject to my control.

FEDERAL ID: ____ - ____ - ____ or SOCIAL SECURITY NUMBER: ____ - ____ - ____

Company or individual bidding: _____

Company representative's name: _____

Address: _____

City: _____ State: _____ Zip: _____

IF AVAILABLE, PLEASE PLACE THE PERSONALIZED LABEL FROM YOUR PROSPECTUS IN THE ABOVE BOX.

Individual or company representative's signature: _____ Date: _____

Phone number : _____ Email (optional): _____

THE WINNING BIDDER MUST COMPLETE THE VERIFICATION OF WORKER'S DISABILITY COMPENSATION ACT COMPLIANCE (ON REVERSE SIDE IF DOUBLE SIDED) WITHIN 21 DAYS OF SALE AWARD DATE



TIMBER SALE VERIFICATION OF WORKER'S DISABILITY COMPENSATION ACT COMPLIANCE

As required by Act 317, P.A. 1969 (Worker's Compensation) and
Part 5 of Act 451 of 1994, as amended.

FOR DEPARTMENT USE ONLY

Sale Number (XX - XXX - XX - XX)

Forest Management Unit:

VERIFICATION OF WORKER'S DISABILITY COMPENSATION ACT COMPLIANCE

- This verification must be completed and submitted within 21 days of contract award and prior to the issuance of the timber sale contract.
- In addition, if boxes 2B or 2C are checked, then Notice of Exclusion or Certificate of Insurance must be submitted within twenty-one (21) days of the contract award and prior to the issuance of the timber sale contract.
- All information must be typed or printed except for written signatures.

Please Check Appropriate Categories:

1. My business is organized as (you **must** check one of the boxes below):
 - A. ☐ Sole Proprietorship (individual)
 - B. ☐ Partnership
 - C. ☐ Corporation
2. You **must** check one of the boxes below:
 - A. ☐ I certify my business is a sole proprietorship and it has no employees but the sole proprietor. I am not subject to the Worker's Compensation Laws.
 - B. ☐ I certify my business has satisfied its obligation to the Worker's Compensation Act through the use of an approved Notice of Exclusion (BWC-337, Rev. 5/96). I will provide a copy of the Notice of Exclusion within 21 days of the contract award. (For questions or a copy of the BWC-337, please call the Worker's Compensation Bureau at 517-322-1195).
 - C. ☐ I certify my business has a Worker's Compensation Policy. I will provide an original Certificate of Insurance within twenty-one (21) days of the contract award.
3. If you have checked item 2(A) or 2(B), you **must** indicate the number of **both** full-time and part-time employees, other than yourself, including family members and active partners (if none, you must enter "0").

_____ Full-time Employees

_____ Part-time Employees

Name of Business		Federal ID (or) Social Security No.
Address		Telephone ()
City	State	ZIP

I hereby certify that the above information is true and correct. I agree to notify the Michigan DNR of any changes that occur in factors affecting my coverage during any of my present and future operations.

Signature of Owner or Authorized Representative

Title

Date

Please complete the "SEALED BID" information on the next page

Adios Hardwoods (61-038-25)
T27N, R14W, SEC. 16; Benzie COUNTY

In response to the notice of sale to be held 4:00 p.m. (local time) on November 6, 2025, I am hereby submitting my sealed bid (firm offer) for the following forest products to be cut. Bids for individual species must be at or above the advertised price. All non-responsive bid forms may be rejected.

<u>PRODUCTS & SPECIES</u>	<u>ESTIMATED VOLUME*</u>	<u>ADVERTISED PRICE</u>	<u>BID PRICE/UNIT</u>
Sawtimber			
B. T. Aspen	100.6 MBF	\$ 124.00/MBF	\$ _____
Beech	73.9 MBF	\$ 186.00/MBF	\$ _____
Black Cherry	68.5 MBF	\$ 153.00/MBF	\$ _____
Red Maple	310.2 MBF	\$ 112.00/MBF	\$ _____
Sugar Maple	512.8 MBF	\$ 290.00/MBF	\$ _____
Pulpwood			
B. T. Aspen	43 Cords	\$ 23.55/Cord	\$ _____
Mixed Hardwood	1,843 Cords	\$ 19.60/Cord	\$ _____
Red Pine	6 Cords	\$ 62.75/Cord	\$ _____

*The volumes are statistically estimated within plus (+) or minus (-) 14.82 percent at 95% confidence level. These estimated volumes are final and not subject to adjustment. Prospective bidders are urged to examine this timber and to make their own estimates of quantity and quality.

I understand that any or all bids may be rejected. All bids must be signed and all bid items must be bid or the bid form may be rejected. I also understand that consideration and awarding a contract will be based upon my past performance and ability to complete the contract based upon equipment and staffing subject to my control.

FEDERAL ID: ____ - ____ - ____ or SOCIAL SECURITY NUMBER: ____ - ____ - ____
Company or individual bidding: _____
Company representative's name: _____
Address: _____
City: _____ State: _____ Zip: _____

IF AVAILABLE, PLEASE PLACE THE PERSONALIZED LABEL FROM YOUR PROSPECTUS IN THE ABOVE BOX.

Individual or company representative's signature: _____ Date: _____

Phone number : _____ Email (optional): _____

**THE WINNING BIDDER MUST COMPLETE THE VERIFICATION OF WORKER'S DISABILITY COMPENSATION ACT
COMPLIANCE (ON REVERSE SIDE IF DOUBLE SIDED) WITHIN 21 DAYS OF SALE AWARD DATE**



TIMBER SALE VERIFICATION OF WORKER'S DISABILITY COMPENSATION ACT COMPLIANCE

As required by Act 317, P.A. 1969 (Worker's Compensation) and
Part 5 of Act 451 of 1994, as amended.

FOR DEPARTMENT USE ONLY

Sale Number (XX - XXX - XX - XX)

Forest Management Unit:

VERIFICATION OF WORKER'S DISABILITY COMPENSATION ACT COMPLIANCE

- This verification must be completed and submitted within 21 days of contract award and prior to the issuance of the timber sale contract.
- In addition, if boxes 2B or 2C are checked, then Notice of Exclusion or Certificate of Insurance must be submitted within twenty-one (21) days of the contract award and prior to the issuance of the timber sale contract.
- All information must be typed or printed except for written signatures.

Please Check Appropriate Categories:

1. My business is organized as (you **must** check one of the boxes below):
 - A. ☐ Sole Proprietorship (individual)
 - B. ☐ Partnership
 - C. ☐ Corporation
2. You **must** check one of the boxes below:
 - A. ☐ I certify my business is a sole proprietorship and it has no employees but the sole proprietor. I am not subject to the Worker's Compensation Laws.
 - B. ☐ I certify my business has satisfied its obligation to the Worker's Compensation Act through the use of an approved Notice of Exclusion (BWC-337, Rev. 5/96). I will provide a copy of the Notice of Exclusion within 21 days of the contract award. (For questions or a copy of the BWC-337, please call the Worker's Compensation Bureau at 517-322-1195).
 - C. ☐ I certify my business has a Worker's Compensation Policy. I will provide an original Certificate of Insurance within twenty-one (21) days of the contract award.
3. If you have checked item 2(A) or 2(B), you **must** indicate the number of **both** full-time and part-time employees, other than yourself, including family members and active partners (if none, you must enter "0").

_____ Full-time Employees

_____ Part-time Employees

Name of Business		Federal ID (or) Social Security No.
Address		Telephone ()
City	State	ZIP

I hereby certify that the above information is true and correct. I agree to notify the Michigan DNR of any changes that occur in factors affecting my coverage during any of my present and future operations.

Signature of Owner or Authorized Representative

Title

Date

Please complete the "SEALED BID" information on the next page

Stage 18 Pine (61-010-25)
T26N, R09W, SEC. 2; T27N, R09W, SEC. 35; Grand Traverse COUNTY

In response to the notice of sale to be held 4:00 p.m. (local time) on November 6, 2025, I am hereby submitting my sealed bid (firm offer) for the following forest products to be cut. Bids for individual species must be at or above the advertised price. All non-responsive bid forms may be rejected.

<u>PRODUCTS & SPECIES</u>	<u>ESTIMATED VOLUME*</u>	<u>ADVERTISED PRICE</u>	<u>BID PRICE/UNIT</u>
Sawtimber			
Red Pine	6.7 MBF	\$ 136.00/MBF	\$ _____
White Pine	43.2 MBF	\$ 76.00/MBF	\$ _____
Pulpwood			
Jack Pine	17 Cords	\$ 15.25/Cord	\$ _____
Mixed Hardwood	43 Cords	\$ 19.60/Cord	\$ _____
Quaking Aspen	172 Cords	\$ 23.55/Cord	\$ _____
Red Pine	18 Cords	\$ 62.75/Cord	\$ _____
White Pine	215 Cords	\$ 27.80/Cord	\$ _____

*The volumes are statistically estimated within plus (+) or minus (-) 19.56 percent at 95% confidence level. These estimated volumes are final and not subject to adjustment. Prospective bidders are urged to examine this timber and to make their own estimates of quantity and quality.

I understand that any or all bids may be rejected. All bids must be signed and all bid items must be bid or the bid form may be rejected. I also understand that consideration and awarding a contract will be based upon my past performance and ability to complete the contract based upon equipment and staffing subject to my control.

FEDERAL ID: ____-____-____ or SOCIAL SECURITY NUMBER: ____-____-____
Company or individual bidding: _____
Company representative's name: _____
Address: _____
City: _____ State: _____ Zip: _____

IF AVAILABLE, PLEASE PLACE THE PERSONALIZED LABEL FROM YOUR PROSPECTUS IN THE ABOVE BOX.

Individual or company representative's signature: _____ Date: _____

Phone number : _____ Email (optional): _____

**THE WINNING BIDDER MUST COMPLETE THE VERIFICATION OF WORKER'S DISABILITY COMPENSATION ACT
COMPLIANCE (ON REVERSE SIDE IF DOUBLE SIDED) WITHIN 21 DAYS OF SALE AWARD DATE**



TIMBER SALE VERIFICATION OF WORKER'S DISABILITY COMPENSATION ACT COMPLIANCE

As required by Act 317, P.A. 1969 (Worker's Compensation) and
Part 5 of Act 451 of 1994, as amended.

FOR DEPARTMENT USE ONLY

Sale Number (XX - XXX - XX - XX)

Forest Management Unit:

VERIFICATION OF WORKER'S DISABILITY COMPENSATION ACT COMPLIANCE

- This verification must be completed and submitted within 21 days of contract award and prior to the issuance of the timber sale contract.
- In addition, if boxes 2B or 2C are checked, then Notice of Exclusion or Certificate of Insurance must be submitted within twenty-one (21) days of the contract award and prior to the issuance of the timber sale contract.
- All Information must be typed or printed except for written signatures.

Please Check Appropriate Categories:

1. My business is organized as (you **must** check one of the boxes below):
 - A. ☐ Sole Proprietorship (individual)
 - B. ☐ Partnership
 - C. ☐ Corporation
2. You **must** check one of the boxes below:
 - A. ☐ I certify my business is a sole proprietorship and it has no employees but the sole proprietor. I am not subject to the Worker's Compensation Laws.
 - B. ☐ I certify my business has satisfied its obligation to the Worker's Compensation Act through the use of an approved Notice of Exclusion (BWC-337, Rev. 5/96). I will provide a copy of the Notice of Exclusion within 21 days of the contract award. (For questions or a copy of the BWC-337, please call the Worker's Compensation Bureau at 517-322-1195).
 - C. ☐ I certify my business has a Worker's Compensation Policy. I will provide an original Certificate of Insurance within twenty-one (21) days of the contract award.
3. If you have checked item 2(A) or 2(B), you **must** indicate the number of **both** full-time and part-time employees, other than yourself, including family members and active partners (if none, you must enter "0").

_____ Full-time Employees

_____ Part-time Employees

Name of Business		Federal ID (or) Social Security No.
Address		Telephone ()
City	State	ZIP

I hereby certify that the above information is true and correct. I agree to notify the Michigan DNR of any changes that occur in factors affecting my coverage during any of my present and future operations.

Signature of Owner or Authorized Representative

Title

Date

Please complete the "SEALED BID" information on the next page

South Branch Ferns (61-046-25)
T26N, R09W, SEC. 2; Grand Traverse COUNTY

In response to the notice of sale to be held 4:00 p.m. (local time) on November 6, 2025, I am hereby submitting my sealed bid (firm offer) for the following forest products to be cut. Bids for individual species must be at or above the advertised price. All non-responsive bid forms may be rejected.

<u>PRODUCTS & SPECIES</u>	<u>ESTIMATED VOLUME*</u>	<u>ADVERTISED PRICE</u>	<u>BID PRICE/UNIT</u>
Sawtimber			
B. T. Aspen	15.6 MBF	\$ 124.00/MBF	\$ _____
White Pine	38.1 MBF	\$ 76.00/MBF	\$ _____
Pulpwood			
B. T. Aspen	262 Cords	\$ 23.55/Cord	\$ _____
Jack Pine	38 Cords	\$ 15.25/Cord	\$ _____
Mixed Hardwood	10 Cords	\$ 19.60/Cord	\$ _____
Mixed Oak	22 Cords	\$ 30.05/Cord	\$ _____
Red Pine	15 Cords	\$ 62.75/Cord	\$ _____
White Pine	155 Cords	\$ 27.80/Cord	\$ _____

*The volumes are statistically estimated within plus (+) or minus (-) 27.66 percent at 95% confidence level. These estimated volumes are final and not subject to adjustment. Prospective bidders are urged to examine this timber and to make their own estimates of quantity and quality.

I understand that any or all bids may be rejected. All bids must be signed and all bid items must be bid or the bid form may be rejected. I also understand that consideration and awarding a contract will be based upon my past performance and ability to complete the contract based upon equipment and staffing subject to my control.

FEDERAL ID: ____ - ____ - ____ or SOCIAL SECURITY NUMBER: ____ - ____ - ____
Company or individual bidding: _____
Company representative's name: _____
Address: _____
City: _____ State: _____ Zip: _____

IF AVAILABLE, PLEASE PLACE THE PERSONALIZED LABEL FROM YOUR PROSPECTUS IN THE ABOVE BOX.

Individual or company representative's signature: _____ Date: _____

Phone number : _____ Email (optional): _____

**THE WINNING BIDDER MUST COMPLETE THE VERIFICATION OF WORKER'S DISABILITY COMPENSATION ACT
COMPLIANCE (ON REVERSE SIDE IF DOUBLE SIDED) WITHIN 21 DAYS OF SALE AWARD DATE**



TIMBER SALE VERIFICATION OF WORKER'S DISABILITY COMPENSATION ACT COMPLIANCE

As required by Act 317, P.A. 1969 (Worker's Compensation) and
Part 5 of Act 451 of 1994, as amended.

FOR DEPARTMENT USE ONLY

Sale Number (XX - XXX - XX - XX)

Forest Management Unit:

VERIFICATION OF WORKER'S DISABILITY COMPENSATION ACT COMPLIANCE

- This verification must be completed and submitted within 21 days of contract award and prior to the issuance of the timber sale contract.
- In addition, if boxes 2B or 2C are checked, then Notice of Exclusion or Certificate of Insurance must be submitted within twenty-one (21) days of the contract award and prior to the issuance of the timber sale contract.
- All information must be typed or printed except for written signatures.

Please Check Appropriate Categories:

1. My business is organized as (you **must** check one of the boxes below):
 - A. ☐ Sole Proprietorship (individual)
 - B. ☐ Partnership
 - C. ☐ Corporation
2. You **must** check one of the boxes below:
 - A. ☐ I certify my business is a sole proprietorship and it has no employees but the sole proprietor. I am not subject to the Worker's Compensation Laws.
 - B. ☐ I certify my business has satisfied its obligation to the Worker's Compensation Act through the use of an approved Notice of Exclusion (BWC-337, Rev. 5/96). I will provide a copy of the Notice of Exclusion within 21 days of the contract award. (For questions or a copy of the BWC-337, please call the Worker's Compensation Bureau at 517-322-1195).
 - C. ☐ I certify my business has a Worker's Compensation Policy. I will provide an original Certificate of Insurance within twenty-one (21) days of the contract award.
3. If you have checked item 2(A) or 2(B), you **must** indicate the number of **both** full-time and part-time employees, other than yourself, including family members and active partners (if none, you must enter "0").

_____ Full-time Employees

_____ Part-time Employees

Name of Business		Federal ID (or) Social Security No.
Address		Telephone ()
City	State	ZIP

I hereby certify that the above information is true and correct. I agree to notify the Michigan DNR of any changes that occur in factors affecting my coverage during any of my present and future operations.

Signature of Owner or Authorized Representative

Title

Date

Please complete the "SEALED BID" information on the next page