



**DEPARTMENT OF NATURAL RESOURCES
STATE OF MICHIGAN
TIMBER SALE PROSPECTUS #7776**

SCHEDULED SALE DATE AND TIME: 4:00 p.m. (local time) on May 7, 2026.

LOCATION: TRAVERSE CITY MGMT UNIT, 2122 M 37 SOUTH, TRAVERSE CITY, MI 49685.

PROSPECTUS NOTE: The bidder is advised to inspect the sale area and review the location, estimated volumes, operating costs and contract terms of proposed sales. Please be aware that some landowners may request 60 days or more notice for access across their land.

Notice is hereby given that bids will be received by the Unit Manager, TRAVERSE CITY MANAGEMENT UNIT, for certain timber on the following described lands:

Nervous Buddy Aspen (61-101-26) / T27N, R05W, SEC. 21, NE,S1/2SW,N1/2SE.
T27N, R05W, SEC. 22, SWNW,NWSW.
Kalkaska County, Advertised Price \$46,091.55, 90.7 Acres, Aspen, White Pine.

Deer Camp Red Pine (61-102-26) / T27N, R05W, SEC. 22, S1/2NW,SW.
Kalkaska County, Advertised Price \$68,857.15, 65.4 Acres, Red Pine, Jack Pine.

SALE NOTE: 5.2.3.4 - Oak Wilt Restriction, No Exceptions applies to entire sale area.

A recreation site such as a trail, pathway, or campground is within the sale area or the vicinity. Certain restrictions/specifications may be applicable including time restrictions.

Black Coffee Aspen (61-104-26) / T27N, R05W, SEC. 14, SESW.
T27N, R05W, SEC. 22, E1/2NE.
T27N, R05W, SEC. 23, NW,W1/2NE,N1/2SW,SESW.
Kalkaska County, Advertised Price \$58,637.30, 126.5 Acres, Aspen, Hardwood.

Poison Pine (61-108-26) / T24N, R07W, SEC. 3 , NENE.
T25N, R07W, SEC. 27, N1/2NE.
T25N, R07W, SEC. 33, NESW,W1/2SE.
T25N, R07W, SEC. 34, N1/2NW,SWNW,NE,E1/2SE.
Missaukee County, Advertised Price \$53,526.80, 114.7 Acres, Hardwood, White Pine.

SALE NOTE: Sale includes some minor road work (spec 4.1.8). Oak wilt restriction with no exceptions is applied to payment units 1-4.

A recreation site such as a trail, pathway, or campground is within the sale area or the vicinity. Certain restrictions/specifications may be applicable including time restrictions.

Hilly Monster Mix (61-144-25) / T27N, R08W, SEC. 4 , NENE.
T27N, R08W, SEC. 5 , N1/2NW,SWNW,NWNE,NESW,NWSE.
T27N, R08W, SEC. 6 , NENE.
T28N, R08W, SEC. 32, SWSW,S1/2SE.
Kalkaska County, Advertised Price \$46,551.45, 96.1 Acres, Aspen, Red Pine.

Hazy Hearted Hardwood (61-145-25) / T27N, R08W, SEC. 4 , W1/2NW,SW.

T27N, R08W, SEC. 5 , N1/2NE,SENE,N1/2SE,SESE.

T28N, R08W, SEC. 33, SWSW.

Kalkaska County, Advertised Price \$44,178.05, 66.0 Acres, Hardwood, Red Pine.

BID INSTRUCTIONS (VER. 10/10/2022):

1. Scheduled Bid Location, Date, and Time (2/11)

Bids must be received by the Unit Manager, TRAVERSE CITY OFFICE, 2122 M 37 South, Traverse City, MI 49685, no later than 4:00 p.m. (local time) on May 7, 2026. For further information concerning this sale, contact Matthew Edison at 906-291-0095.

2. Bidder's Qualifications (10/22)

If all or part of a timber sale was prepared by a private contractor, the contractor and that contractor's company are not permitted to bid on the timber sale. A person must be 18 years of age or older to purchase timber. Permanent employees of the Department of Natural Resources or members of their immediate household may not bid. Former employees, in the permanent or seasonal class, may not bid until 3 months after the last day of active duty. Bids will not be accepted from individuals or companies appearing on the DNR/FRD No-Bid List. This list contains the names of purchasers who previously failed to execute a contract within 21-days or who have a history of poor performance.

3. Preparation of Sealed Bids (5/16)

Bid Forms may be completed online thru Michigan DNR Timber Sale Online Bidding (OLB) at www.michigan.gov/timberbidding or by completing the hardcopy Bid Form found in the Timber Sale Prospectus. Hardcopy Bid Forms shall be manually signed in ink. Registration in OLB is considered your 'signature' for all bids submitted thru that system. Bid prices must be entered for each species and product in the Bid Price column for all material subject to bidding and all fill-in blanks must be completed. If erasures or other changes appear on the hardcopy Bid Form, each erasure or change must be initialed by the person signing the bid.

4. Submission of Sealed Bids (5/16)

Bid forms may be obtained from the Unit Manager or thru OLB. Bids may be submitted hardcopy or thru OLB. All hardcopy bids must be submitted on the bid form and in an envelope clearly identified as described in this section. NOTE: Only one bid form per bid envelope. Sealed bids must be submitted to the Unit office designated in the prospectus and must be submitted at or prior to the time established in the prospectus. The envelope should show on the outside (a) the sale name or number and (b) the date and time of bid opening, as shown in the prospectus. Bids received after the time specified in the sale prospectus are late bids and will be rejected.

It is possible for a bidder to submit multiple bids on a single sale. For example, a bid may be submitted hardcopy and a bid may be submitted thru OLB. Or, two bidders from the same company could both submit bids on the same sale. If this were to happen, the State would accept all bids received and award the contract accordingly. All bidding and contractual requirements would apply to all bids received.

5. Public Opening of Sealed Bids (7/16)

If conditions permit, the sealed bids will be publicly opened and posted at the time and place set in the prospectus.

If a bidder, present at a bid opening, has submitted bids on more than one sale, that bidder may withdraw their unopened bid envelopes or announce the withdrawal of their online bid after being declared the successful bidder on one sale.

6. Award of Contract (1/11)

Award of the contract will be made to the Bidder whose bid, conforming to the prospectus, is most advantageous to the State of Michigan on the basis of total value at rates bid for the estimated quantities. The State reserves the right to reject any bid or waive any minor irregularity in bids received. A written award mailed (or otherwise furnished) to the successful Bidder shall be deemed to result in a binding contract without further action by either party.

7. Down Payment (1/11)

The Bidder to whom award is made must make a down payment within 21 days of the sale award. The amount of the down payment will be calculated as shown in the Bond and Payment Schedule of this prospectus. Only cash may be used to meet this requirement.

8. Performance Security (1/11)

As guarantee of faithful performance, a cash bond, certificate of deposit, surety bond or irrevocable letter of credit (LOC) is required within 21 days of the sale award. The amount of the performance security is shown in the Bond and

Payment Schedule of this prospectus. If an LOC or surety is used, the coverage must extend for at least 6 months beyond the contract expiration.

9. Worker's Compensation (10/22)

Purchaser shall obtain worker's compensation insurance to cover claims under Michigan's Worker's Disability Compensation Act of 1969 or similar employee benefit act of any other state applicable to an employee. Verification of Worker's Disability Compensation Act Compliance must be completed and submitted within 21 days of contract award and prior to the issuance of the timber sale contract. In addition, if applicable, Notice of Exclusion or Certificate of Insurance must also be submitted.

10. Timber Sale Contract (10/22)

Additional conditions and requirements common to all timber sales are listed on the timber sale contract (R4031) and are available on line at www.michigan.gov/timber. Contact the Unit Manager for additional information or a sample contract. Within 21 days of the date of the award letter, the bidder must sign the contract and provide the required down payment, performance security, and verification of worker's disability compensation. The down payment and performance security shall be in accordance with the provisions of the timber sale contract, in the sums stated in this prospectus. If these actions are not taken, then the Bidder, the Bidder's corporation, and the corporation's principals may not be permitted to bid on State timber sales for a period of 3 months after the first offense, 6 months after the second offense, and 1 year after the third offense. An offense will only be counted against the Bidder for 5 years. In addition, the Bidder certifies that if awarded this contract, the Bidder will complete the timber sale contract in accordance with its terms and any modifications thereof including requirements to purchase, cut, and remove the included timber by the expiration date.

Payment Unit values in the State Forest Timber Sale Contract are calculated based on the advertised value of the Payment Unit as a percentage of the total advertised value of the contract. The advertised value of each Payment Unit is given in the Description of Timber by Payment Unit table on the Timber Sale Information page. For example, if the value of Payment Unit 1 is advertised as \$1,500 and the total Timber Sale value is advertised as \$10,000, the contract price for Payment Unit 1 will be 15% of the total bid price ($\$1,500/\$10,000 * 100$).

11. Disclaimer of Estimates and Bidder's Warranty of Inspection (10/22)

Before submitting this bid, the Bidder is advised and cautioned to inspect the sale area, review the requirements of the sale contract, and take other steps as may be reasonably necessary to ascertain the location, estimated volumes, construction estimates, and operating costs of the proposed sale. Failure to do so will not relieve the Bidder from responsibility for completing the contract.

The Bidder warrants that this bid is submitted solely on the basis of the Bidder's examination and inspection of the quality and quantity of the timber offered for sale and the Bidder's opinion of the value thereof and the costs of recovery. No reliance should be placed on the State of Michigan's estimates of timber quality, quantity or costs of recovery. Bidder further acknowledges that the State of Michigan: (i) expressly disclaims any warranty of fitness of timber for any purpose; (ii) offers this timber as is without any warranty of quality (merchantability) or quantity and (iii) expressly disclaims any warranty as to the quantity or quality of timber sold.

12. Certification and Chain-of-Custody (10/22)

Unless otherwise indicated in the contract under section 7 – Other Conditions of the Sale Specific Conditions & Requirements, the area encompassed by this timber sale is certified to the standards of the Forest Stewardship Council (FSC) - Certificate #SCS-FM/COC-00090N and the Sustainable Forestry Initiative (SFI) - Certificate #NSF-SFIS-5Y031-SF5. Forest products from this sale may be delivered to the mill as "FSC 100% and / or SFI certified" as long as the contractor hauling the forest products is chain-of-custody (COC) certified or covered under a COC certificate from the destination mill. The purchaser is responsible for maintaining COC after leaving the sale area.

13. Good Neighbor Authority (GNA) Requirements (10/22)

If the name of this timber sales contains the acronym GNA, it is authorized by the Good Neighbor Authority (GNA) and covered by various agreements between the U.S. Forest Service and the State. The timber sale occurs on federal land and the following conditions apply:

GNA contracts on US Forest Service land will not be awarded to purchasers on the Federal list of excluded parties. The System for Award Management (SAM) will be checked for active excluded parties prior to award of contract. In

addition, the Bidder to whom award is made must complete an Assurance Regarding Felony Conviction or Tax Delinquent Status for Corporate Applicants (AD-3031).

14. Good Neighbor Authority (GNA) Requirements, con't (10/22)

Bidder certifies, by signing this bid form, that to the best of Bidder's knowledge that the following representations are accurate and complete.

- a. That the Bidder and its principals are not presently debarred, suspended, proposed for debarment, declared ineligible, or voluntary excluded from timber sales (covered transactions) by any Federal department or agency.
- b. That the Bidder and its principals have not within a 3-year period preceding this bid been convicted of or had a civil judgment rendered against them for commission of fraud or a criminal offense in connection with obtaining , attempting to obtain, or performing a public (Federal, State, or local) transaction or contract under a public transaction; violation of Federal or State antitrust statutes or commission of embezzlement, theft, forgery, bribery, falsification or destruction of records, making false statements, or receiving stolen property.
- c. That the Bidder and its principals are not presently indicted for or otherwise criminally or civilly charged by a governmental entity (Federal, State, or local) with commission of any of the offenses enumerated in paragraph b of this certification.
- d. That the Bidder and its principals have not within a 3-year period preceding this bid had one or more public transactions (Federal, State, or local) terminated for breach or default of a timber or forest product contract.

Bidders that cannot certify this requirement, in whole or in part, shall submit an explanation with their bid.

Scott Bowen
Director

TIMBER SALE INFORMATION

Nervous Buddy Aspen (61-101-26)
T27N, R05W, SEC. 21; T27N, R05W, SEC. 22.
Kalkaska County (Advertised Price \$46,091.55)

A timber sale contract for this lump sum, sealed bid timber sale will be awarded to the responsible bidder offering the highest sealed bid price. All units of volume listed below were estimated using the Inventory Manager computer program and the new Michigan taper model. Bids must be at or above the following advertised price for each product and species:

<u>PRODUCTS & SPECIES</u>	<u>ESTIMATED UNITS*</u>	<u>ADVERTISED PRICE</u>
Sawtimber		
Red Oak	8.1 MBF	\$ 144.00 / MBF
Red Pine	18.7 MBF	\$ 137.00 / MBF
Pulpwood		
Balsam Fir	9 Cords	\$ 32.60 / Cord
Black Cherry	98 Cords	\$ 16.65 / Cord
Jack Pine	13 Cords	\$ 13.40 / Cord
Mixed Aspen	1,281 Cords	\$ 24.75 / Cord
Red Maple	76 Cords	\$ 16.65 / Cord
Red Oak	40 Cords	\$ 30.55 / Cord
Red Pine	7 Cords	\$ 60.10 / Cord
White Pine	207 Cords	\$ 27.30 / Cord

* The total volume is statistically estimated within plus (+) or minus (-) 18.76 percent. There are an estimated 1,796 cords on this timber sale, plus or minus 337 cords at the 95% confidence level. The estimated units are final and not subject to adjustment. Prospective bidders are urged to examine this timber and to make their own estimates of quantity and quality.

BOND AND PAYMENT SCHEDULE:

1. A bond in the amount of \$2,305.00 to insure faithful performance of the conditions of the contract will be deposited by the successful bidder within 21 days of the sale award.
2. Cutting in any sale or unit without the required advance payment would be considered a trespass.
3. Total payment must be paid in advance or according to the following schedule :
 - (a) Ten percent (10%) of the sale value must be paid within 21 days of the sale award.
 - (b) The 10% down payment will be credited towards the first unit cut.
 - (c) Payment for each of the following units must be made before cutting begins in that unit:

PAYMENT UNIT NUMBER	PERCENT OF TOTAL SALE VALUE
01	24.8%
02	32.2%
03	43.0%
4. If no cutting takes place, the 10% down payment will not be refunded.
5. Operations on the contract issued will terminate on 09/30/2029.

SALE STATISTICS

Volumes were calculated in cubic feet using the Michigan taper model. Cubic foot volume includes all wood inside bark for the product indicated. For display purposes, cubic feet were converted to cords and MBF using a simple conversion factor, e.g. 79 cubic feet per cord and 185 cubic feet per MBF. The cubic foot volumes are precise; the cords and MBF volumes are not. Cubic foot volume cannot be directly converted to cords or boards with precision.

SALE VOLUMES

The total estimated sale volume may not equal the sum of the species/products due to the nature of statistical calculations associated with double sampling methodology.

VOLUME		STATISTICAL RANGE IN CORDS		
TOTAL CUBIC FEET	TOTAL CORDS	PERCENT ERROR	MINIMUM	MAXIMUM
141,871	1,796	18.76%	1,459	2,133

VDU VOLUMES

A VDU is a Volume Determination Unit. Volumes and their associated statistics are calculated at the VDU level and summarized to the sale level. There is often a one to one relationship between a VDU and a Payment Unit, but not always, depending on the cruise design. Refer to the VDU TO PAYMENT UNIT table.

VDU	VOLUME		PERCENT ERROR	RANGE IN CORDS	
	TOTAL CUBIC FEET	TOTAL CORDS		MINIMUM	MAXIMUM
17	31,731	402	37.92%	249	554
27	110,140	1,394	21.79%	1,090	1,698
TOTAL:	141,871	1,796		1,340	2,252

VDU TO PAYMENT UNIT

When a VDU is associated with more than one Payment Unit (PU), the VDU volumes are assigned to the PU based on acres of the VDU within the PU.

VDU	VDU ACRES	PU	PU ACRES
TOTAL:			

DESCRIPTION OF TIMBER BY PAYMENT UNIT (PU)

PU	MARKET GROUP	PRODUCT	QUANTITY	UNIT	ACRES	ADVERTISE PRICE			
1	Red Oak	Sawtimber	6.3	MBF	16.1	\$11,445.50			
	Red Pine		10.2	MBF					
	Balsam Fir	Pulpwood	9	Cords					
	Jack Pine		6	Cords					
	Mixed Aspen		264	Cords					
	<i>B. T. Aspen</i>		171	<i>Cords</i>					
	<i>Quaking Aspen</i>		93	<i>Cords</i>					
	Red Maple		5	Cords					
	Red Oak		13	Cords					
	Red Pine		1	Cords					
	White Pine		62	Cords					
	<i>White Pine</i>	<i>Sawtimber</i>	9.7	<i>MBF</i>					
	<i>White Pine</i>	<i>Pulpwood</i>	43	<i>Cords</i>					
	2	Red Oak	Sawtimber	0.8			MBF	31.8	\$14,828.40
Red Pine			3.6	MBF					
Black Cherry		Pulpwood	42	Cords					
Jack Pine			3	Cords					
Mixed Aspen			434	Cords					
<i>B. T. Aspen</i>			209	<i>Cords</i>					
<i>Quaking Aspen</i>			225	<i>Cords</i>					
Red Maple			30	Cords					
Red Oak			12	Cords					
Red Pine			3	Cords					
White Pine			62	Cords					
<i>White Pine</i>			62	<i>Cords</i>					
3		Red Oak	Sawtimber	1.0	MBF	42.8	\$19,817.65		
		Red Pine		4.9	MBF				
	Black Cherry	Pulpwood	56	Cords					
	Jack Pine		4	Cords					
	Mixed Aspen		583	Cords					
	<i>B. T. Aspen</i>		281	<i>Cords</i>					
	<i>Quaking Aspen</i>		302	<i>Cords</i>					
	Red Maple		41	Cords					
	Red Oak		15	Cords					
	Red Pine		3	Cords					
	White Pine		83	Cords					
	<i>White Pine</i>		83	<i>Cords</i>					
	TOTAL:			26.8	MBF				
	TOTAL:			1,731	Cords				

Sale Specific Conditions & Requirements

Sale Name: Nervous Buddy Aspen

Sale Number: 61-101-26 Seq#: 1

1 - Sale Area

1.2 - Boundaries

1.2.1 - Painted Boundaries (9/19)

The sale boundary and Payment Unit boundaries are marked and identified by blue, red and yellow paint. Exterior sale boundary lines against private property are marked with blue paint. Exterior sale boundary lines against state are marked with red paint. Interior Payment Unit boundaries are marked with yellow paint. Retention patches are marked with red paint; no harvesting activities may occur within these areas. The painted boundary line trees are not Included Timber and are to be protected. Yellow painted trees designating an interior Payment Unit boundary are only to be cut when all surrounding Payment Units have been paid.

2 - Timber Specifications

2.1 - Included Timber

2.1.1 - Clearcut Unit(s) with Unmerchantable Trees (6/14)

Within Payment Unit(s) 1, 2 and 3, cut all trees that are two (2) inches or more at DBH, except do not cut any green marked trees or white oak within sale boundary.

In addition all pine and oak under 4.5 inches in DBH is protected during harvest.

2.2 - Utilization

2.2.3 - Stump Heights (12/24)

Stump heights within the Sale Area shall not exceed 12 inches for trees greater than 10 inches at DBH and four (4) inches for trees smaller than 10 inches at DBH.

3 - Payments

3.3 - Pre-measured Sales

3.3.4 - Dividing Payment Units (7/14)

Payment Unit(s) may be divided at the request of the Purchaser and upon approval of the Unit Manager. Dividing Payment Units is a contract modification which requires a Timber Sale Contract Amendment. There will be only one division per Payment Unit.

3.4 - Damaged Timber

3.4.1 - Damaged Timber (12/24)

General Condition and Requirement 3.4 Damaged Timber, defines liquidated damages for undesignated live merchantable trees which are cut or injured. In addition, extreme care should be taken to avoid damage to tree seedlings and saplings.

Within the Sale Area, if more than 30% of the oak or pine seedlings or saplings (1/4" to 4.5" DBH) within a specified portion of the Sale Area are damaged, liquidated damages will be assessed at \$500 per acre for all acreage within that specified portion of the Sale Area that was damaged.

3.4.2 - Special Protection Trees (1/25)

The Purchaser shall not cut live or dead special protection trees within cutting units or clearings. Special protection trees are White Pine and White Oak over 25 Inches in DBH. This sale condition only applies to Payment units 1, 2 and 3. If Purchaser's operations have cut or damaged special protection trees through carelessness, the Purchaser shall pay \$1,000 Per Tree as fixed, agreed and liquidated damages for each special protection tree cut or damaged. Such payment does not constitute ownership of the undesignated timber.

4 - Transportation

4.1 - Construction

4.1.3 - Slash and Earthen Piles (8/04)

Piles or windrows of earth along roads and landings that have been widened or constructed shall be leveled. Slash from road maintenance or construction, including stumps, shall be dispersed throughout the sale.

4.1.11 - Permits (2/12)

The Purchaser will secure any necessary county road permits that may be required.

4.1.12 - No New Roads (1/12)

No new roads will be permitted in any Payment Unit. All operations are limited to existing roads. Only Skid trails will be allowed.

4.2 - Maintenance

4.2.4 - Grading (10/16)

For completion of the sale, state forest roads must be graded. In general, this will require a road grader or bulldozer to shape up the roads after forest products have been hauled off site. This includes cleaning of drainage areas, grading, crowning and filling with gravel, if necessary. The grading equipment to be used must be approved by the Unit Manager or his/her representative.

4.2.5 - Two Wheel Drive Condition (2/04)

All existing trail roads on and adjacent to the Sale Area must be passable by two-wheel drive traffic for the duration of the sale.

5 - Operations

5.1 - Notification

5.1.1 - Pre-sale Conference (10/25)

A pre-sale conference on site between the Purchaser and Sale Administrator is required prior to beginning any operations. Landing and road locations will be determined at that time. The Unit Manager or his/her representative must be contacted at least 5 days in advance to schedule the conference.

5.1.4 - Post-Sale Conference (10/16)

A post-sale conference on site between the Purchaser and sale administrator is required 5 days prior to the completion of active logging operations to determine clean-up and repair of landings, road edges, and the fulfillment of other contract specifications.

5.2 - Conduct of Operations

5.2.1 - Slash

5.2.1.8 - Slash Height (12/08)

No slash or tree tops may exceed 24 inches in height.

5.2.1.10 - No Slash in Openings (5/10)

No brush or logging debris is to be left in the maintained wildlife opening which is indicated by G0(Grass cover type-zero stocked) on the Timber Sale Map. Any damage to the opening shall be repaired according to specifications of the Unit Manager or his/her representative.

5.2.3 - Operating Restrictions

5.2.3.5 - Oak Wilt Restriction (1/18)

Within Payment Units 1, 2, and 3 unless changed by written agreement, cutting, skidding, hauling within the sale and brushing of access roads to the sale are not permitted during the period of April 15 to July 15. Operations may be allowed if specific steps are taken to prevent damaging uncut oak during the high-risk period. Those steps may include completing all road brushing before April 15 and clearing a tree-length buffer along uncut oak cover before April 15. This is necessary to reduce the spread of oak wilt. For more information, contact the Unit Manager or his/her representative.

5.2.4 - Dead and Down Creation

5.2.4.4 - Dead and Down Creation, Grouse (6/18)

To encourage grouse and other wildlife, in Payment Unit(s) 1, 2 and 3 leave one, 12" diameter or larger log-length (8 foot

minimum) piece on the ground for every two (2) acres. These trees will be evenly scattered throughout the Payment Unit, preferably at least two chains from any roads, two-tracks, or trails open to vehicles. This can be an unmerchantable piece or a full tree.

5.2.29 - Shrub Protection (1/20)

Do not cut or damage hawthorn, witch-hazel, dogwood or serviceberry/juneberry. These woody-shrub plants are highly beneficial to various wildlife species.

5.2.32 - Decking/Landing Restoration (9/13)

All decking and landing areas must have the surface area restored to a condition equal to or better than before. This is to ensure the proper regeneration of the stand. Wood debris, chips and "cookies" from trimmings must be removed or scattered away from landing and loading areas and may not be windrowed on the edge.

5.2.37 - No Decking Areas (12/08)

No decking is allowed within 50 feet of the wildlife opening within sale boundary. The opening is managed for wildlife and will not be used as part of the timber sale.

5.4 - Soil Protection

5.4.1 - Rutting Restriction, General (7/16)

Operations are to cease immediately if equipment and weather conditions result in rutting of roads and/or skid trails which are 12 inches or greater in depth and 50 feet in length. The Unit Manager or his/her representative may restrict hauling and/or skidding if ruts exceed the specified depth. With the Unit Manager or his/her representative's approval, the Purchaser may return to the area when the risk of rutting has decreased.

6 - Safety and Fire Prevention

6.2 - Signing

6.2.1 - Road Posting (10/20)

The Purchaser is responsible for posting and maintaining caution signs on all county and state two tracks prior to beginning operations. The road must be posted at appropriate distances from the Sale Area to warn of logging activity and truck traffic. Signs must be removed when harvest operations are suspended or completed. The Purchaser will provide these signs.



TIMBER SALE MAP

This information provided by authority of Part 525, 1994 PA 451, as amended.

Sale Number 61-101-26	Date 10/23/2025
Scale 1:10,000	Page 1
	Of 1

Forest Management Unit Traverse City Mgt Unit	County Kalkaska	Mapped By: Tom Peterson
		Cruised By: Peterson & Roell

Township 27N	Range 05W	Section(s) and Subdivision(s) Sec. 21 NE,S1/2SW,N1/2SE; Sec. 22 SWNW,NWSW;
-----------------	--------------	--

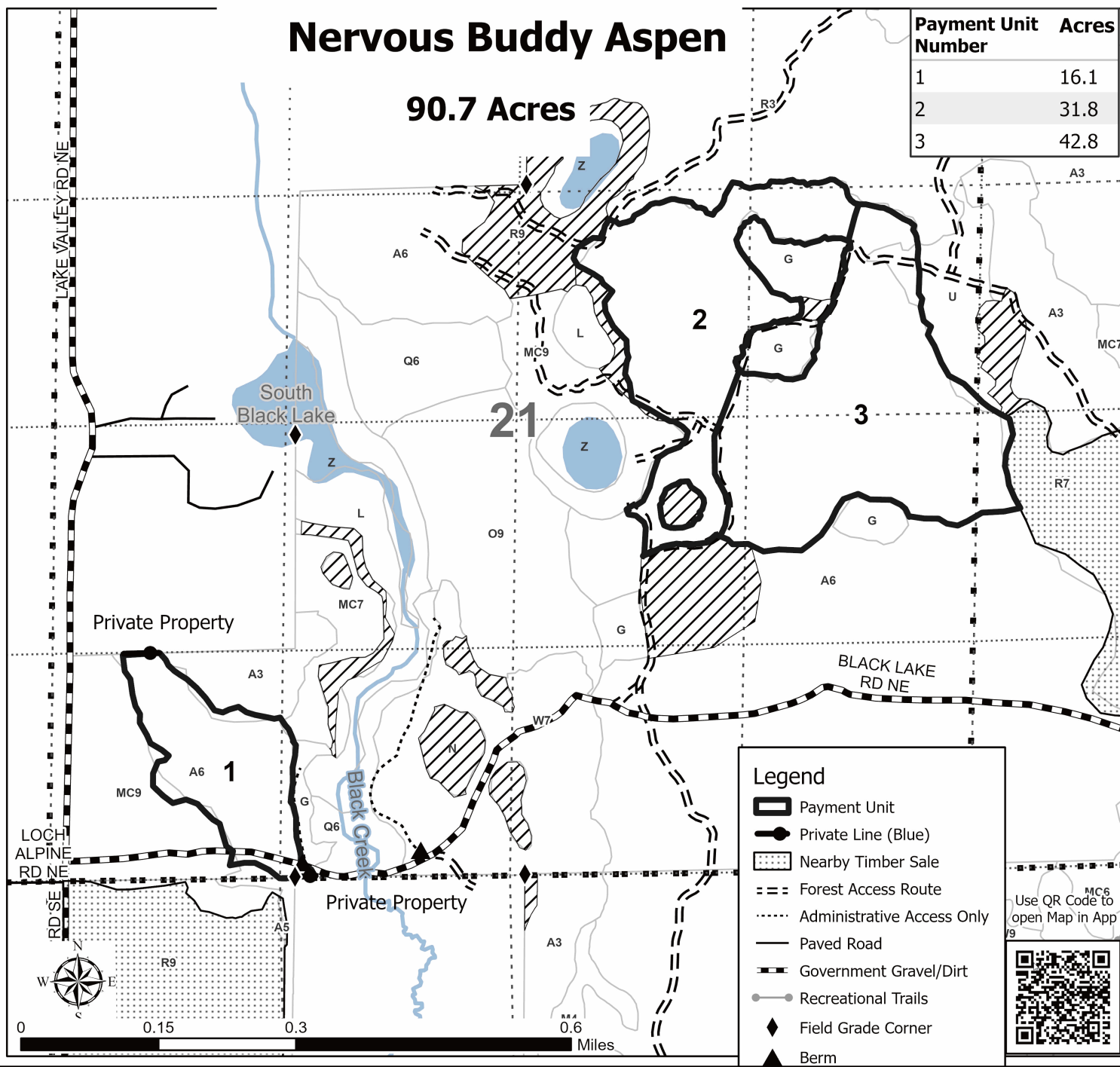
Cover Type			
A = Aspen	J = Jack Pine	O = Oak	U = Upland Brush
B = Paper Birch	K = Rock	P = Lowland Poplar	UM = Upland Mix Forest
C = Cedar	L = Lowland Brush	Q = Mixed Swamp Conifer	V = Bog or Marsh
D = Treed Bog	LM = Lowland Mix Forest	R = Red Pine	W = White Pine
E = Swamp Hardwoods	M = Maple, Beech, Birch	S = Black Spruce	X = Non Stocked
F = Spruce/Fir	MC = Mixed Conifer	T = Tamarack	Y = Sand
G = Grass	MD = Mixed Deciduous	Z = Water	
H = Hemlock	N = Marsh		

Density	
0 = Non Stocked	5 = Pole Timber Medium
1 = Seedling Sapling Poor	6 = Pole Timber Well
2 = Seedling Sapling Medium	7 = Saw Timber Poor
3 = Seedling Sapling Well	8 = Saw Timber Medium
4 = Pole Timber Poor	9 = Saw Timber Well

Nervous Buddy Aspen

90.7 Acres

Payment Unit Number	Acres
1	16.1
2	31.8
3	42.8



TIMBER SALE INFORMATION

Deer Camp Red Pine (61-102-26)

T27N, R05W, SEC. 22.

Kalkaska County (Advertised Price \$68,857.15)

SALE NOTE: 5.2.3.4 - Oak Wilt Restriction, No Exceptions applies to entire sale area.

A recreation site such as a trail, pathway, or campground is within the sale area or the vicinity. Certain restrictions/specifications may be applicable including time restrictions.

A timber sale contract for this lump sum, sealed bid timber sale will be awarded to the responsible bidder offering the highest sealed bid price. All units of volume listed below were estimated using the Inventory Manager computer program and the new Michigan taper model. Bids must be at or above the following advertised price for each product and species:

<u>PRODUCTS & SPECIES</u>	<u>ESTIMATED UNITS*</u>		<u>ADVERTISED PRICE</u>
Sawtimber			
Red Maple	10.6	MBF	\$ 100.00 / MBF
Red Pine	309.5	MBF	\$ 137.00 / MBF
White Pine	4.6	MBF	\$ 84.00 / MBF
Pulpwood			
Black Cherry	13	Cords	\$ 16.65 / Cord
Jack Pine	183	Cords	\$ 13.40 / Cord
Mixed Aspen	173	Cords	\$ 24.75 / Cord
Red Maple	53	Cords	\$ 16.65 / Cord
Red Pine	254	Cords	\$ 60.10 / Cord
White Pine	70	Cords	\$ 27.30 / Cord

* The total volume is statistically estimated within plus (+) or minus (-) 18.58 percent. There are an estimated 1,505 cords on this timber sale, plus or minus 280 cords at the 95% confidence level. The estimated units are final and not subject to adjustment. Prospective bidders are urged to examine this timber and to make their own estimates of quantity and quality.

BOND AND PAYMENT SCHEDULE:

1. A bond in the amount of \$3,443.00 to insure faithful performance of the conditions of the contract will be deposited by the successful bidder within 21 days of the sale award.
2. Cutting in any sale or unit without the required advance payment would be considered a trespass.
3. Total payment must be paid in advance or according to the following schedule :
 - (a) Ten percent (10%) of the sale value must be paid within 21 days of the sale award.
 - (b) The 10% down payment will be credited towards the first unit cut.

(c) Payment for each of the following units must be made before cutting begins in that unit:

PAYMENT UNIT NUMBER	PERCENT OF TOTAL SALE VALUE
01	51.7%
02	48.3%

4. If no cutting takes place, the 10% down payment will not be refunded.
5. Operations on the contract issued will terminate on 09/30/2029.

SALE STATISTICS

Volumes were calculated in cubic feet using the Michigan taper model. Cubic foot volume includes all wood inside bark for the product indicated. For display purposes, cubic feet were converted to cords and MBF using a simple conversion factor, e.g. 79 cubic feet per cord and 185 cubic feet per MBF. The cubic foot volumes are precise; the cords and MBF volumes are not. Cubic foot volume cannot be directly converted to cords or boards with precision.

SALE VOLUMES

The total estimated sale volume may not equal the sum of the species/products due to the nature of statistical calculations associated with double sampling methodology.

VOLUME		STATISTICAL RANGE IN CORDS		
TOTAL CUBIC FEET	TOTAL CORDS	PERCENT ERROR	MINIMUM	MAXIMUM
118,867	1,505	18.58%	1,225	1,784

VDU VOLUMES

A VDU is a Volume Determination Unit. Volumes and their associated statistics are calculated at the VDU level and summarized to the sale level. There is often a one to one relationship between a VDU and a Payment Unit, but not always, depending on the cruise design. Refer to the VDU TO PAYMENT UNIT table.

VDU	VOLUME		PERCENT ERROR	RANGE IN CORDS	
	TOTAL CUBIC FEET	TOTAL CORDS		MINIMUM	MAXIMUM
34	118,867	1,505	18.58%	1,225	1,784
TOTAL:	118,867	1,505		1,225	1,784

VDU TO PAYMENT UNIT

When a VDU is associated with more than one Payment Unit (PU), the VDU volumes are assigned to the PU based on acres of the VDU within the PU.

VDU	VDU ACRES	PU	PU ACRES
TOTAL:			

DESCRIPTION OF TIMBER BY PAYMENT UNIT (PU)

PU	MARKET GROUP	PRODUCT	QUANTITY	UNIT	ACRES	ADVERTISE PRICE
1	Red Maple	Sawtimber	5.5	MBF	33.8	\$35,594.10
	Red Pine		160.0	MBF		
	White Pine		2.4	MBF		
	Black Cherry	Pulpwood	7	Cords		
	Jack Pine		95	Cords		
	Mixed Aspen		90	Cords		
	<i>B. T. Aspen</i>		7	<i>Cords</i>		
	<i>Quaking Aspen</i>		83	<i>Cords</i>		
	Red Maple		27	Cords		
	Red Pine		131	Cords		
	White Pine		36	Cords		
	2		Red Maple	Sawtimber		
Red Pine		149.5	MBF			
White Pine		2.2	MBF			
Black Cherry		Pulpwood	6	Cords		
Jack Pine			88	Cords		
Mixed Aspen			83	Cords		
<i>B. T. Aspen</i>			6	<i>Cords</i>		
<i>Quaking Aspen</i>			77	<i>Cords</i>		
Red Maple			26	Cords		
Red Pine			123	Cords		
White Pine			34	Cords		
TOTAL:			324.7	MBF		
TOTAL:			746	Cords		

Sale Specific Conditions & Requirements

Sale Name: Deer Camp Red Pine

Sale Number: 61-102-26 Seq#: 1

1 - Sale Area

1.2 - Boundaries

1.2.1 - Painted Boundaries (9/19)

The sale boundary and Payment Unit boundaries are marked and identified by red and yellow paint. Exterior sale boundary lines against state are marked with red paint. Interior Payment Unit boundaries are marked with yellow paint. The painted boundary line trees are not Included Timber and are to be protected. Yellow painted trees designating an interior Payment Unit boundary are only to be cut when all surrounding Payment Units have been paid.

2 - Timber Specifications

2.1 - Included Timber

2.1.5 - Overstory Removal Unit(s) (8/11)

Within Payment Unit(s) 1 and 2, all species/ trees with DBH equal to or greater than 5.0 inches which meet minimum piece specifications in 2.2 Utilization, are designated for cutting. In addition, do not cut any oaks or green marked trees in Payment units 1 and 2.

2.2 - Utilization

2.2.3 - Stump Heights (12/24)

Stump heights within the Sale Area shall not exceed twelve 12 inches for trees greater than 10 inches at DBH and four (4) inches for trees smaller than 10 inches at DBH.

3 - Payments

3.3 - Pre-measured Sales

3.3.4 - Dividing Payment Units (7/14)

Payment Unit(s) 1 and 2 may be divided at the request of the Purchaser and upon approval of the Unit Manager. Dividing Payment Units is a contract modification which requires a Timber Sale Contract Amendment. There will be only one division per Payment Unit.

3.4 - Damaged Timber

3.4.1 - Damaged Timber (12/24)

General Condition and Requirement 3.4 Damaged Timber, defines liquidated damages for undesignated live merchantable trees which are cut or injured. In addition, extreme care should be taken to avoid damage to tree seedlings and saplings.

Within the Sale Area, if more than 30% of the tree seedlings or saplings (1/4" to 4.5" DBH) within a specified portion of the Sale Area are damaged, liquidated damages will be assessed at \$500 per acre for all acreage within that specified portion of the Sale Area that was damaged.

4 - Transportation

4.1 - Construction

4.1.3 - Slash and Earthen Piles (8/04)

Piles or windrows of earth along roads and landings that have been widened or constructed shall be leveled. Slash from road maintenance or construction, including stumps, shall be scattered throughout sale. Stumps will be used to block off landings.

4.1.11 - Permits (2/12)

The Purchaser will secure any necessary county road permits that may be required.

4.1.12 - No New Roads (1/12)

No new roads will be permitted in any Payment Unit. All operations are limited to existing roads. Only Skid trails will be allowed.

4.2 - Maintenance

4.2.4 - Grading (10/16)

For completion of the sale, state forest roads must be graded. In general, this will require a road grader or bulldozer to shape up the roads after forest products have been hauled off site. This includes cleaning of drainage areas, grading, crowning and filling with gravel, if necessary. The grading equipment to be used must be approved by the Unit Manager or his/her representative.

4.2.5 - Two Wheel Drive Condition (2/04)

All existing trail roads on and adjacent to the Sale Area must be passable by two-wheel drive traffic for the duration of the sale.

5 - Operations

5.1 - Notification

5.1.1 - Pre-sale Conference (10/25)

A pre-sale conference on site between the Purchaser and Sale Administrator is required prior to beginning any operations to determine landing and road locations. The Unit Manager or his/her representative must be contacted at least 10 days in advance to schedule the conference.

5.1.4 - Post-Sale Conference (10/16)

A post-sale conference on site between the Purchaser and sale administrator is required 5 days prior to the completion of active logging operations to determine clean-up and repair of landings, road edges, and the fulfillment of other contract specifications.

5.2 - Conduct of Operations

5.2.1 - Slash

5.2.1.8 - Slash Height (12/08)

No slash or tree tops may exceed 24 inches in height.

5.2.2 - Hazard Trees/Snags

5.2.2.1 - Den Trees (10/16)

Obvious hollow and/or den trees shall be protected and left standing unless they are a safety hazard.

5.2.3 - Operating Restrictions

5.2.3.4 - Oak Wilt Restriction, No Exceptions (1/18)

Within Payment Unit(s) 1 and 2 cutting, skidding, and brushing of access roads to the sale are not permitted during the period of April 15 to July 15. No exceptions will be granted. This is necessary to reduce the spread of oak wilt.

5.2.29 - Shrub Protection (1/20)

Do not cut or damage hawthorn, witch-hazel, dogwood or serviceberry/Juneberry. These woody-shrub plants are highly beneficial to various wildlife species.

5.2.32 - Decking/Landing Restoration (9/13)

All decking and landing areas must have the surface area restored to a condition equal to or better than before. This is to ensure the proper regeneration of the stand. Wood debris, chips and "cookies" from trimmings must be removed or scattered away from landing and loading areas and may not be windrowed on the edge.

5.2.39 - ORV Trail/Route Protection (4/18)

The ORV trail / route is shown on the Timber Sale Map. Do not cut trees or damage posts with yellow ORV markers. All stumps within five (5) feet of the trail must be cut flush with the ground. Maintain a 20-foot-wide slash, debris, and rut free zone daily using the ORV trail or route as the centerline. Do not run equipment down the ORV trail or route. Skidding across the trail or route may only occur in locations approved by the Sale Administrator.

5.4 - Soil Protection

5.4.1 - Rutting Restriction, General (7/16)

Operations are to cease immediately if equipment and weather conditions result in rutting of roads and/or skid trails which are 12 inches or greater in depth and 50 feet in length. The Unit Manager or his/her representative may restrict hauling and/or skidding if ruts exceed the specified depth. With the Unit Manager or his/her representative's approval, the Purchaser may return to the area when the risk of rutting has decreased.

6 - Safety and Fire Prevention

6.2 - Signing

6.2.1 - Road Posting (10/20)

The Purchaser is responsible for posting and maintaining caution signs on all county and state two tracks that touch the sale boundary prior to beginning operations. The road must be posted at appropriate distances from the Sale Area to warn of logging activity and truck traffic. Signs must be removed when harvest operations are suspended or completed. The Purchaser will provide these signs.

6.2.3 - Recreational Trail Posting (10/20)

The Purchaser is responsible for posting and maintaining caution signs on ORV Trail prior to beginning operations. The trail must be posted at appropriate distances from the Sale Area to warn of logging activity and truck traffic at both ends of the trail. Signs must be removed when harvest operations are suspended or completed. The Purchaser will provide these signs.



TIMBER SALE MAP

This information provided by authority of Part 525, 1994 PA 451, as amended.

Sale Number	Date	
61-102-26	10/23/2025	
Scale	Page	Of
1:15,840	1	1

Forest Management Unit	County	Mapped By: Tom Peterson
Traverse City Mgt Unit	Kalkaska	Cruised By: Tom Peterson

Township	Range	Section(s) and Subdivision(s)
27N	05W	Sec. 22 S1/2NW,SW;

Cover Type			
A = Aspen	J = Jack Pine	O = Oak	U = Upland Brush
B = Paper Birch	K = Rock	P = Lowland Poplar	UM = Upland Mix Forest
C = Cedar	L = Lowland Brush	Q = Mixed Swamp Conifer	V = Bog or Marsh
D = Treed Bog	LM = Lowland Mix Forest	R = Red Pine	W = White Pine
E = Swamp Hardwoods	M = Maple, Beech, Birch	S = Black Spruce	X = Non Stocked
F = Spruce/Fir	MC = Mixed Conifer	T = Tamarack	Y = Sand
G = Grass	MD = Mixed Deciduous	Z = Water	
H = Hemlock	N = Marsh		

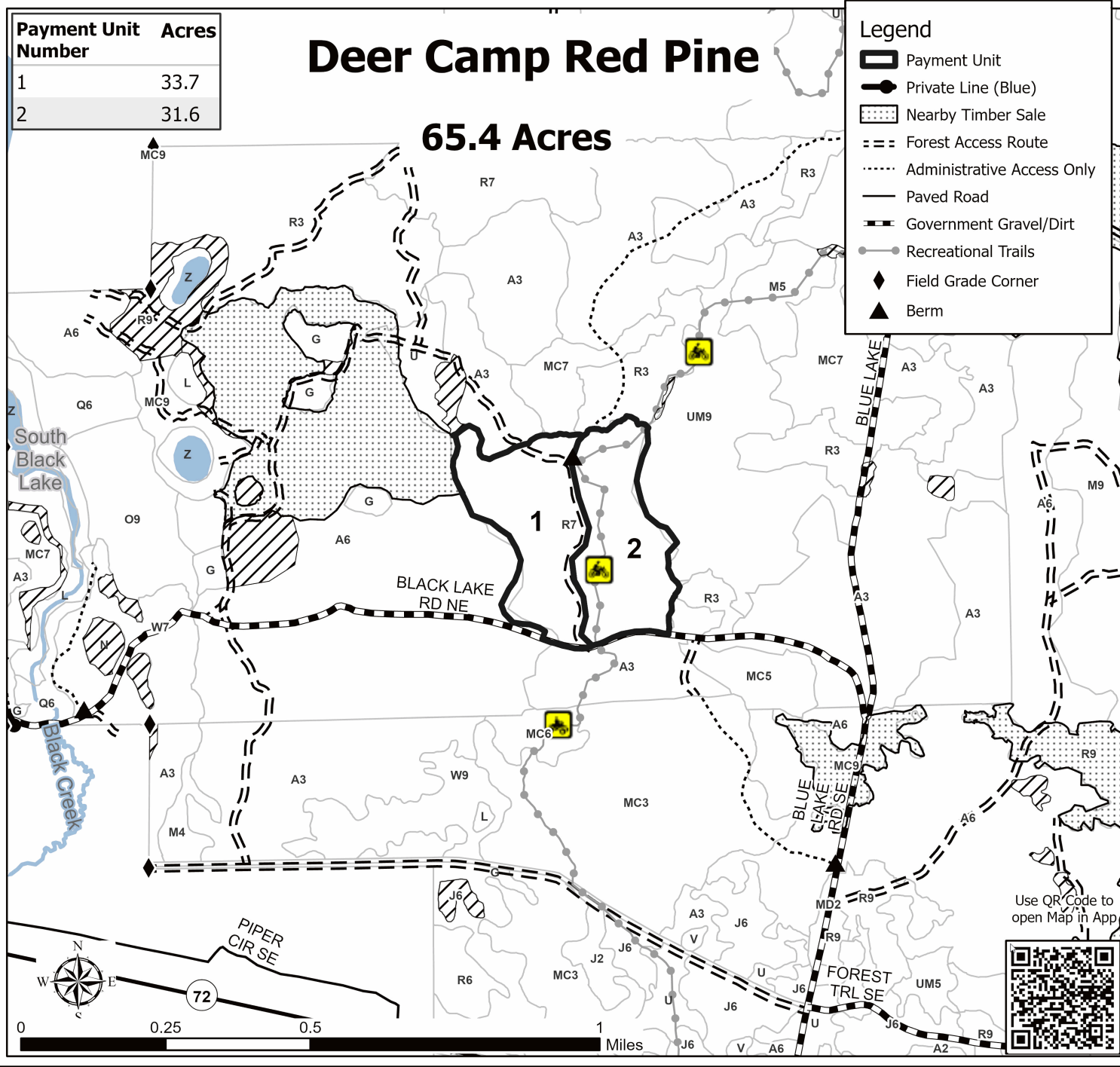
Density	
0 = Non Stocked	5 = Pole Timber Medium
1 = Seedling Sapling Poor	6 = Pole Timber Well
2 = Seedling Sapling Medium	7 = Saw Timber Poor
3 = Seedling Sapling Well	8 = Saw Timber Medium
4 = Pole Timber Poor	9 = Saw Timber Well

Payment Unit Number	Acres
1	33.7
2	31.6

Deer Camp Red Pine

65.4 Acres

Legend	
	Payment Unit
	Private Line (Blue)
	Nearby Timber Sale
	Forest Access Route
	Administrative Access Only
	Paved Road
	Government Gravel/Dirt
	Recreational Trails
	Field Grade Corner
	Berm



TIMBER SALE INFORMATION

Black Coffee Aspen (61-104-26)
T27N, R05W, SEC. 14; T27N, R05W, SEC. 22; T27N, R05W, SEC. 23.
Kalkaska County (Advertised Price \$58,637.30)

A timber sale contract for this lump sum, sealed bid timber sale will be awarded to the responsible bidder offering the highest sealed bid price. All units of volume listed below were estimated using the Inventory Manager computer program and the new Michigan taper model. Bids must be at or above the following advertised price for each product and species:

<u>PRODUCTS & SPECIES</u>	<u>ESTIMATED UNITS*</u>	<u>ADVERTISED PRICE</u>
Sawtimber		
Black Cherry	21.5 MBF	\$ 127.00 / MBF
Red Maple	16.7 MBF	\$ 100.00 / MBF
Red Pine	8.8 MBF	\$ 137.00 / MBF
White Pine	44.5 MBF	\$ 84.00 / MBF
Pulpwood		
Black Cherry	370 Cords	\$ 16.65 / Cord
Jack Pine	21 Cords	\$ 13.40 / Cord
Mixed Aspen	1,129 Cords	\$ 24.75 / Cord
Mixed Hardwood	22 Cords	\$ 16.65 / Cord
Red Maple	227 Cords	\$ 16.65 / Cord
Red Pine	26 Cords	\$ 60.10 / Cord
White Pine	337 Cords	\$ 27.30 / Cord

* The total volume is statistically estimated within plus (+) or minus (-) 17.54 percent. There are an estimated 2,345 cords on this timber sale, plus or minus 412 cords at the 95% confidence level. The estimated units are final and not subject to adjustment. Prospective bidders are urged to examine this timber and to make their own estimates of quantity and quality.

BOND AND PAYMENT SCHEDULE:

1. A bond in the amount of \$2,932.00 to insure faithful performance of the conditions of the contract will be deposited by the successful bidder within 21 days of the sale award.
2. Cutting in any sale or unit without the required advance payment would be considered a trespass.
3. Total payment must be paid in advance or according to the following schedule :
 - (a) Ten percent (10%) of the sale value must be paid within 21 days of the sale award.
 - (b) The 10% down payment will be credited towards the first unit cut.
 - (c) Payment for each of the following units must be made before cutting begins in that unit:

PAYMENT UNIT NUMBER	PERCENT OF TOTAL SALE VALUE
01	64.8%
02	10.6%
03	24.6%
4. If no cutting takes place, the 10% down payment will not be refunded.
5. Operations on the contract issued will terminate on 09/30/2029.

SALE STATISTICS

Volumes were calculated in cubic feet using the Michigan taper model. Cubic foot volume includes all wood inside bark for the product indicated. For display purposes, cubic feet were converted to cords and MBF using a simple conversion factor, e.g. 79 cubic feet per cord and 185 cubic feet per MBF. The cubic foot volumes are precise; the cords and MBF volumes are not. Cubic foot volume cannot be directly converted to cords or boards with precision.

SALE VOLUMES

The total estimated sale volume may not equal the sum of the species/products due to the nature of statistical calculations associated with double sampling methodology.

VOLUME		STATISTICAL RANGE IN CORDS		
TOTAL CUBIC FEET	TOTAL CORDS	PERCENT ERROR	MINIMUM	MAXIMUM
185,263	2,345	17.54%	1,934	2,757

VDU VOLUMES

A VDU is a Volume Determination Unit. Volumes and their associated statistics are calculated at the VDU level and summarized to the sale level. There is often a one to one relationship between a VDU and a Payment Unit, but not always, depending on the cruise design. Refer to the VDU TO PAYMENT UNIT table.

VDU	VOLUME		PERCENT ERROR	RANGE IN CORDS	
	TOTAL CUBIC FEET	TOTAL CORDS		MINIMUM	MAXIMUM
62	160,299	2,029	19.86%	1,626	2,432
64	24,964	316	28.77%	225	407
TOTAL:	185,263	2,345		1,851	2,839

VDU TO PAYMENT UNIT

When a VDU is associated with more than one Payment Unit (PU), the VDU volumes are assigned to the PU based on acres of the VDU within the PU.

VDU	VDU ACRES	PU	PU ACRES
TOTAL:			

DESCRIPTION OF TIMBER BY PAYMENT UNIT (PU)

PU	MARKET GROUP	PRODUCT	QUANTITY	UNIT	ACRES	ADVERTISE PRICE
1	Black Cherry	Sawtimber	13.0	MBF	60.0	\$38,012.35
	Red Maple		10.7	MBF		
	Red Pine		6.4	MBF		
	White Pine		32.2	MBF		
	Black Cherry	Pulpwood	111	Cords		
	Jack Pine		14	Cords		
	Mixed Aspen		772	Cords		
	<i>B. T. Aspen</i>		286	Cords		
	<i>Quaking Aspen</i>		486	Cords		
	Mixed Hardwood		17	Cords		
	<i>Beech</i>		7	Cords		
	<i>Ironwood</i>		3	Cords		
	<i>Red Oak</i>		4	Cords		
	<i>Sugar Maple</i>		3	Cords		
	Red Maple		149	Cords		
	Red Pine		19	Cords		
White Pine		244	Cords			
2	Black Cherry	Sawtimber	3.5	MBF	43.7	\$6,204.60
	Red Maple		2.0	MBF		
	Black Cherry	Pulpwood	217	Cords		
	Jack Pine		1	Cords		
	Mixed Aspen		64	Cords		
	<i>Quaking Aspen</i>		64	Cords		
	Red Maple		21	Cords		
3	Black Cherry	Sawtimber	5.0	MBF	22.8	\$14,420.35
	Red Maple		4.0	MBF		
	Red Pine		2.4	MBF		
	White Pine		12.3	MBF		
	Black Cherry	Pulpwood	42	Cords		
	Jack Pine		6	Cords		
	Mixed Aspen		293	Cords		
	<i>B. T. Aspen</i>		108	Cords		
	<i>Quaking Aspen</i>		185	Cords		
	Mixed Hardwood		5	Cords		
	<i>Beech</i>		2	Cords		
	<i>Ironwood</i>		1	Cords		
	<i>Red Oak</i>		1	Cords		
	<i>Sugar Maple</i>		1	Cords		
	Red Maple		57	Cords		
	Red Pine		7	Cords		
White Pine		93	Cords			
TOTAL:			91.5	MBF		
TOTAL:			2,132	Cords		

Sale Specific Conditions & Requirements

Sale Name: Black Coffee Aspen

Sale Number: 61-104-26 Seq#: 1

1 - Sale Area

1.2 - Boundaries

1.2.1 - Painted Boundaries (9/19)

The sale boundary and Payment Unit boundaries are marked and identified by red and yellow paint. Exterior sale boundary lines against state are marked with red paint. Interior Payment Unit boundaries are marked with yellow paint. Retention patches are marked with red paint; no harvesting activities may occur within these areas. The painted boundary line trees are not Included Timber and are to be protected. Yellow painted trees designating an interior Payment Unit boundary are only to be cut when all surrounding Payment Units have been paid.

2 - Timber Specifications

2.1 - Included Timber

2.1.1 - Clearcut Unit(s) with Unmerchantable Trees (6/14)

Within Payment Unit(s) 1, 2 and 3, cut all trees that are two (2) inches or more at DBH, except for the following:

Payment Unit 1 - due not cut any green marked trees. In addition to green marked trees protect all red pine, white pine, and all oak under 4.5 inches in DBH.

Payment Unit 2 - due not cut any white pine, red pine, red oak, white oak or green mark trees regardless of size, these will be protected during all harvest activities.

Payment Unit 3 - due not cut any hemlock or green marked trees. In addition to hemlock and green marked trees, protect all sugar maple and oak under 4.5 inches in DBH.

2.2 - Utilization

2.2.3 - Stump Heights (12/24)

Stump heights within the Sale Area shall not exceed 12 inches for trees greater than 10 inches at DBH and four (4) inches for trees smaller than 10 inches at DBH.

3 - Payments

3.3 - Pre-measured Sales

3.3.4 - Dividing Payment Units (7/14)

Payment Unit(s) 1, 2 and 3 may be divided at the request of the Purchaser and upon approval of the Unit Manager. Dividing Payment Units is a contract modification which requires a Timber Sale Contract Amendment. There will be only one division per Payment Unit.

3.4 - Damaged Timber

3.4.1 - Damaged Timber (12/24)

General Condition and Requirement 3.4 Damaged Timber, defines liquidated damages for undesignated live merchantable trees which are cut or injured. In addition, extreme care should be taken to avoid damage to tree seedlings and saplings.

Within the Sale Area, if more than 30% of the tree seedlings or saplings (1/4" to 4.5" DBH) within a specified portion of the Sale Area are damaged, liquidated damages will be assessed at \$500 per acre for all acreage within that specified portion of the Sale Area that was damaged. See spec 2.1.1 for advanced regeneration that is protected in in each Payment Unit.

3.4.2 - Special Protection Trees (1/25)

The Purchaser shall not cut live or dead special protection trees within cutting units or clearings. Special protection trees are any oak, pine, or maple within sale area that is greater than 30 inches at DBH (These trees should have green marks, but if one was missed this spec applies). If Purchaser's operations have cut or damaged special protection trees through carelessness, the Purchaser shall pay triple the value of the tree based on bid price as fixed, agreed and liquidated damages for each special protection tree cut or damaged. Such payment does not constitute ownership of the undesignated timber.

4 - Transportation

4.1 - Construction

4.1.3 - Slash and Earthen Piles (8/04)

Piles or windrows of earth along roads and landings that have been widened or constructed shall be leveled. Slash from road maintenance or construction, including stumps, shall be dispersed throughout the sale.

4.1.11 - Permits (2/12)

The Purchaser will secure any necessary county road permits that may be required.

4.1.12 - No New Roads (1/12)

No new roads will be permitted in any Payment Unit. All operations are limited to existing roads. Only Skid trails will be allowed.

4.2 - Maintenance

4.2.5 - Two Wheel Drive Condition (2/04)

All existing trail roads on and adjacent to the Sale Area must be passable by two-wheel drive traffic for the duration of the sale.

5 - Operations

5.1 - Notification

5.1.1 - Pre-sale Conference (10/25)

A pre-sale conference on site between the Purchaser and Sale Administrator is required prior to beginning any operations to determine landing and road locations. The Unit Manager or his/her representative must be contacted at least 5 days in advance to schedule the conference.

5.1.4 - Post-Sale Conference (10/16)

A post-sale conference on site between the Purchaser and sale administrator is required 5 days prior to the completion of active logging operations to determine clean-up and repair of landings, road edges, and the fulfillment of other contract specifications.

5.2 - Conduct of Operations

5.2.1 - Slash

5.2.1.8 - Slash Height (12/08)

No slash or tree tops may exceed 24 inches in height.

5.2.1.10 - No Slash in Openings (5/10)

No brush or logging debris is to be left in the maintained wildlife opening which is indicated by G0 on the Timber Sale Map. Any damage to the opening shall be repaired according to specifications of the Unit Manager or his/her representative.

5.2.2 - Hazard Trees/Snags

5.2.2.1 - Den Trees (10/16)

Obvious hollow and/or den trees shall be protected and left standing unless they are a safety hazard.

5.2.3 - Operating Restrictions

5.2.3.5 - Oak Wilt Restriction (1/18)

Within Payment Units 1, 2, and 3, unless changed by written agreement, cutting, skidding, hauling within the sale and brushing of access roads to the sale are not permitted during the period of April 15 to July 15. Operations may be allowed if specific steps are taken to prevent damaging uncut oak during the high-risk period. Those steps may include completing all road brushing before April 15 and clearing a tree-length buffer along uncut oak cover before April 15. This is necessary to reduce the spread of oak wilt. For more information, contact the Unit Manager or his/her representative.

5.2.4 - Dead and Down Creation

5.2.4.2 - Dead and Down Creation, Hare and Grouse (1/25)

To improve habitat for snowshoe hare, grouse, and other species, the Purchaser is to leave two trees, nine (9) inches or larger in diameter on the ground for every two (2) acres. They should be scattered throughout the sale or positioned per the Sale Administrator's instructions. six (6) feet. They can be of any tree species and can be an un-merchantable piece of wood or a full tree.

5.2.29 - Shrub Protection (1/20)

Do not cut or damage hawthorn, witch-hazel, dogwood or junberry. These woody-shrub plants are highly beneficial to various wildlife species.

5.2.32 - Decking/Landing Restoration (9/13)

All decking and landing areas must have the surface area restored to a condition equal to or better than before. This is to ensure the proper regeneration of the stand. Wood debris, chips and "cookies" from trimmings must be removed or scattered away from landing and loading areas and may not be windrowed on the edge.

5.2.43 - Opening Protection (2/21)

No activities are permitted in openings marked on the Timber Sale Map with the letter "G". Any damage to the openings shall be repaired according to specifications of the Unit Manager or his/her representative.

5.4 - Soil Protection

5.4.1 - Rutting Restriction, General (7/16)

Operations are to cease immediately if equipment and weather conditions result in rutting of roads and/or skid trails which are 12 inches or greater in depth and 50 feet in length. The Unit Manager or his/her representative may restrict hauling and/or skidding if ruts exceed the specified depth. With the Unit Manager or his/her representative's approval, the Purchaser may return to the area when the risk of rutting has decreased.

6 - Safety and Fire Prevention

6.2 - Signing

6.2.1 - Road Posting (10/20)

The Purchaser is responsible for posting and maintaining caution signs on road name prior to beginning operations. The road must be posted at appropriate distances from the Sale Area to warn of logging activity and truck traffic. Signs must be removed when harvest operations are suspended or completed. The Purchaser will provide these signs.



TIMBER SALE MAP

This information provided by authority of Part 525, 1994 PA 451, as amended.

Sale Number	Date
61-104-26	10/23/2025

Forest Management Unit	County	Mapped By: Tom Peterson
Traverse City Mgt Unit	Kalkaska	Cruised By: Tom Peterson

Scale	Page	Of
1:15,840	1	1

Township	Range	Section(s) and Subdivision(s)
27N	05W	Sec. 14 SESW; Sec. 22 E1/2NE; Sec. 23 NW,W1/2NE,N1/2SW,SESW;

Cover Type			
A = Aspen	J = Jack Pine	O = Oak	U = Upland Brush
B = Paper Birch	K = Rock	P = Lowland Poplar	UM = Upland Mix Forest
C = Cedar	L = Lowland Brush	Q = Mixed Swamp Conifer	V = Bog or Marsh
D = Treed Bog	LM = Lowland Mix Forest	R = Red Pine	W = White Pine
E = Swamp Hardwoods	M = Maple, Beech, Birch	S = Black Spruce	X = Non Stocked
F = Spruce/Fir	MC = Mixed Conifer	T = Tamarack	Y = Sand
G = Grass	MD = Mixed Deciduous	Z = Water	
H = Hemlock	N = Marsh		

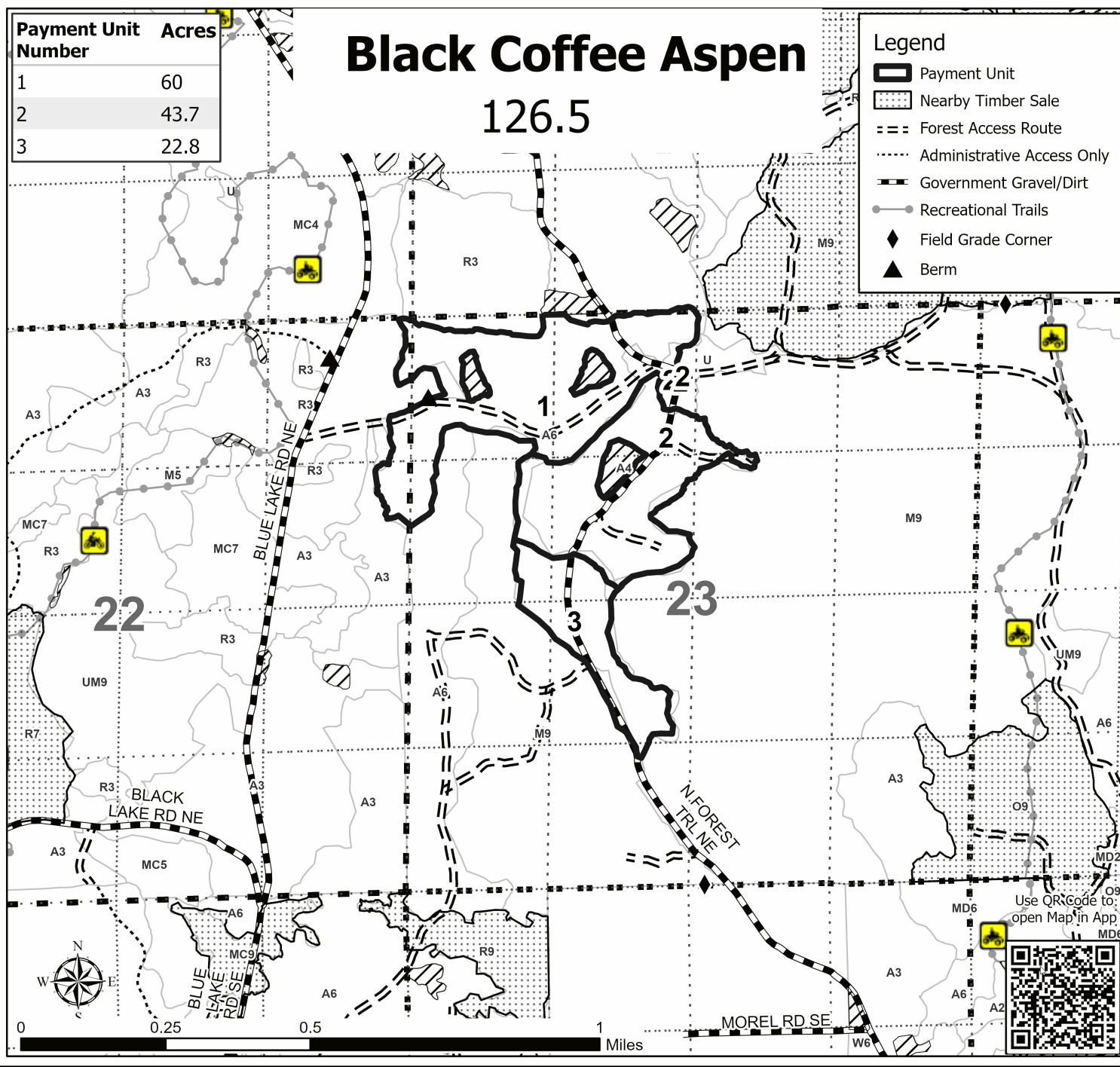
Density	
0 = Non Stocked	5 = Pole Timber Medium
1 = Seedling Sapling Poor	6 = Pole Timber Well
2 = Seedling Sapling Medium	7 = Saw Timber Poor
3 = Seedling Sapling Well	8 = Saw Timber Medium
4 = Pole Timber Poor	9 = Saw Timber Well

Payment Unit Number	Acres
1	60
2	43.7
3	22.8

Black Coffee Aspen

126.5

Legend	
	Payment Unit
	Nearby Timber Sale
	Forest Access Route
	Administrative Access Only
	Government Gravel/Dirt
	Recreational Trails
	Field Grade Corner
	Berm



TIMBER SALE INFORMATION

Poison Pine (61-108-26)

T24N, R07W, SEC. 3; T25N, R07W, SEC. 27; T25N, R07W, SEC. 33; T25N, R07W, SEC. 34.
Missaukee County (Advertised Price \$53,526.80)

SALE NOTE: Sale includes some minor road work (spec 4.1.8). Oak wilt restriction with no exceptions is applied to payment units 1-4.

A recreation site such as a trail, pathway, or campground is within the sale area or the vicinity. Certain restrictions/specifications may be applicable including time restrictions.

A timber sale contract for this lump sum, sealed bid timber sale will be awarded to the responsible bidder offering the highest sealed bid price. All units of volume listed below were estimated using the Inventory Manager computer program and the new Michigan taper model. Bids must be at or above the following advertised price for each product and species:

<u>PRODUCTS & SPECIES</u>	<u>ESTIMATED UNITS*</u>		<u>ADVERTISED PRICE</u>
Sawtimber			
Black/Red (Hybrid) Oak	10.4	MBF	\$ 101.00 / MBF
Red Maple	25.2	MBF	\$ 100.00 / MBF
Red Pine	56.5	MBF	\$ 137.00 / MBF
White Pine	56.3	MBF	\$ 84.00 / MBF
Pulpwood			
Balsam Fir	29	Cords	\$ 32.60 / Cord
Black Spruce	21	Cords	\$ 8.35 / Cord
Black/Red (Hybrid) Oak	22	Cords	\$ 30.55 / Cord
Jack Pine	17	Cords	\$ 13.40 / Cord
Paper Birch	8	Cords	\$ 33.45 / Cord
Quaking Aspen	337	Cords	\$ 24.75 / Cord
Red Maple	310	Cords	\$ 16.65 / Cord
Red Pine	227	Cords	\$ 60.10 / Cord
White Pine	295	Cords	\$ 27.30 / Cord

* The total volume is statistically estimated within plus (+) or minus (-) 13.65 percent. There are an estimated 1,610 cords on this timber sale, plus or minus 220 cords at the 95% confidence level. The estimated units are final and not subject to adjustment. Prospective bidders are urged to examine this timber and to make their own estimates of quantity and quality.

BOND AND PAYMENT SCHEDULE:

1. A bond in the amount of \$3,747.00 to insure faithful performance of the conditions of the contract will be deposited by the successful bidder within 21 days of the sale award.
2. Cutting in any sale or unit without the required advance payment would be considered a trespass.
3. Total payment must be paid in advance or according to the following schedule :
 - (a) Ten percent (10%) of the sale value must be paid within 21 days of the sale award.
 - (b) The 10% down payment will be credited towards the first unit cut.
 - (c) Payment for each of the following units must be made before cutting begins in that unit:

PAYMENT UNIT NUMBER	PERCENT OF TOTAL SALE VALUE
01	31.6%
02	17.3%
03	31.6%
04	9.8%
05	9.7%
4. If no cutting takes place, the 10% down payment will not be refunded.
5. Operations on the contract issued will terminate on 06/30/2029.

SALE STATISTICS

Volumes were calculated in cubic feet using the Michigan taper model. Cubic foot volume includes all wood inside bark for the product indicated. For display purposes, cubic feet were converted to cords and MBF using a simple conversion factor, e.g. 79 cubic feet per cord and 185 cubic feet per MBF. The cubic foot volumes are precise; the cords and MBF volumes are not. Cubic foot volume cannot be directly converted to cords or boards with precision.

SALE VOLUMES

The total estimated sale volume may not equal the sum of the species/products due to the nature of statistical calculations associated with double sampling methodology.

VOLUME			STATISTICAL RANGE IN CORDS	
TOTAL CUBIC FEET	TOTAL CORDS	PERCENT ERROR	MINIMUM	MAXIMUM
127,216	1,610	13.65%	1,390	1,830

VDU VOLUMES

A VDU is a Volume Determination Unit. Volumes and their associated statistics are calculated at the VDU level and summarized to the sale level. There is often a one to one relationship between a VDU and a Payment Unit, but not always, depending on the cruise design. Refer to the VDU TO PAYMENT UNIT table.

	VOLUME			RANGE IN CORDS	
VDU	TOTAL CUBIC FEET	TOTAL CORDS	PERCENT ERROR	MINIMUM	MAXIMUM
59	21,684	274	34.18%	181	368
67	16,833	213	34.57%	139	287
69	38,102	482	26.27%	356	609
93	36,922	467	27.31%	340	595
99	13,675	173	36.41%	110	236
TOTAL:	127,216	1,610		1,126	2,095

VDU TO PAYMENT UNIT

When a VDU is associated with more than one Payment Unit (PU), the VDU volumes are assigned to the PU based on acres of the VDU within the PU.

VDU	VDU ACRES	PU	PU ACRES
TOTAL:			

DESCRIPTION OF TIMBER BY PAYMENT UNIT (PU)

PU	MARKET GROUP	PRODUCT	QUANTITY	UNIT	ACRES	ADVERTISE PRICE	
1	Black/Red (Hybrid)	Sawtimber	5.3	MBF	35.4	\$16,938.15	
	Red Maple		8.3	MBF			
	Red Pine		29.5	MBF			
	White Pine		1.6	MBF			
	Balsam Fir		Pulpwood	3			Cords
	Black/Red (Hybrid)			6			Cords
	Jack Pine			14			Cords
	Quaking Aspen			173			Cords
	Red Maple			76			Cords
	Red Pine			75			Cords
	White Pine			32			Cords
	2			Red Maple			Sawtimber
Red Pine		10.7	MBF				
White Pine		7.5	MBF				
Quaking Aspen		Pulpwood	26	Cords			
Red Maple			76	Cords			
Red Pine			46	Cords			
White Pine			75	Cords			
3		Red Maple	Sawtimber	3.3	MBF	31.3	
	Red Pine	16.3		MBF			
	White Pine	20.0		MBF			
	Balsam Fir	Pulpwood		25	Cords		
	Black Spruce			21	Cords		
	Black/Red (Hybrid)			3	Cords		
	Jack Pine			3	Cords		
	Quaking Aspen			96	Cords		
	Red Maple			44	Cords		
	Red Pine			106	Cords		
	White Pine			77	Cords		
	4	Black/Red (Hybrid)		Sawtimber	5.1		MBF
Red Maple		1.9	MBF				
White Pine		21.9	MBF				
Black/Red (Hybrid)		Pulpwood	13		Cords		
Quaking Aspen			28		Cords		
Red Maple			14		Cords		
White Pine			50		Cords		
5		Red Maple	Sawtimber		7.5	MBF	13.7
	White Pine	5.3		MBF			
	Balsam Fir	Pulpwood		1	Cords		
	Paper Birch			8	Cords		
	Quaking Aspen			14	Cords		
	Red Maple			100	Cords		
	White Pine			61	Cords		
TOTAL:			148.4	MBF			
TOTAL:			1,266	Cords			

Sale Specific Conditions & Requirements

Sale Name: Poison Pine

Sale Number: 61-108-26 Seq#: 1

1 - Sale Area

1.2 - Boundaries

1.2.1 - Painted Boundaries (9/19)

The sale boundary and Payment Unit boundaries are marked and identified by blue and red paint. Exterior sale boundary lines against private property are marked with blue paint. Exterior sale boundary lines against state are marked with red paint. The painted boundary line trees are not Included Timber and are to be protected unless marked with orange paint.

2 - Timber Specifications

2.1 - Included Timber

2.1.3 - Cut Tree Marked Unit(s) (12/08)

Within Payment Unit(s) 1, 2, 3, 4 and 5, all trees are designated for cutting when marked with orange paint above and below stump height, regardless of merchantability. In addition to cutting orange marked trees:

- Units 1, 2 & 3 cut all aspen greater than 6 inches in diameter (at DBH) except those marked with an orange 'X'. Also, jack pine, balsam fir and black spruce that meet minimum piece specifications.

- Units 4 & 5 cut all jack pine, balsam fir and black spruce that meet minimum piece specifications.

2.2 - Utilization

2.2.3 - Stump Heights (12/24)

Stump heights within the Sale Area shall not exceed 12 inches for trees greater than 10 inches at DBH and six (6) inches for trees smaller than 10 inches at DBH. A written waiver of this requirement may be obtained if wet summer weather makes winter logging necessary.

3 - Payments

3.3 - Pre-measured Sales

3.3.4 - Dividing Payment Units (7/14)

Payment Unit(s) 1 and 3 may be divided at the request of the Purchaser and upon approval of the Unit Manager. Dividing Payment Units is a contract modification which requires a Timber Sale Contract Amendment. There will be only one division per Payment Unit.

3.4 - Damaged Timber

3.4.1 - Damaged Timber (12/24)

General Condition and Requirement 3.4 Damaged Timber, defines liquidated damages for undesignated live merchantable trees which are cut or injured. In addition, extreme care should be taken to avoid damage to tree seedlings and saplings.

Within the Sale Area, if more than 30% of the tree seedlings or saplings (1/4" to 4.5" DBH) within a specified portion of the Sale Area are damaged, liquidated damages will be assessed at \$200 per acre for all acreage within that specified portion of the Sale Area that was damaged.

No damage is acceptable to undesignated live merchantable trees. Within the Sale Area, if more than 10 % of trees (> 4.5" DBH) within a specified area of the sale are damaged, liquidated damages will be assessed for all trees damaged. Rates will be in accordance with General Condition and Requirement 3.4 Damaged Timber.

4 - Transportation

4.1 - Construction

4.1.6 - Road Construction (4/24)

Construction of new roads or improvements of existing roads shall be done in such a way as to minimize the environmental and visual impacts. Merchantable trees shall be cut and utilized unless otherwise directed. Non-merchantable trees shall be

severed and laid flat on the ground. Slash shall be scattered, not left in windrows, and kept a minimum of 10 feet back from the road edge. Stumps shall be set upright, not left on edge, and be moved at least 10 feet away from the road edge. Disturbed soil shall be feathered into the woods and not left in berms or windrows.

4.1.7 - Road Closure (10/11)

All new roads built into the sale must be blocked to vehicle traffic within 30 days of completion of hauling. Overgrown roads that are reopened shall be considered new roads. Some existing roads may also need to be closed; Units 1, 2 and 3 have additional road closures. Contact sale administrator for more details. In general, this will require constructing a four (4') foot high berm of stumps and logs covered with earth. Stumps and brush must be placed along the remainder of the trail. These roads must be rendered impassable to cars and trucks. Contact the Sale Administrator for specific details of design and placement.

4.1.8 - Road Work (1) (8/07)

Purchaser will recontour an ephemeral drainage where it intersects with an existing Administrative Access Road. This is located in the north block of unit 2. Contact sale administrator for more details. Additionally the purchaser will need to install berms on some of the existing trails and roads in units 1, 2 and 3 (4 berms). Contact sale administrator for more details.

4.2 - Maintenance

4.2.1 - Hauling Restriction (12/08)

Hauling may be restricted on forest roads by the Unit Manager or his/her representative. The restriction may occur during wet weather conditions.

5 - Operations

5.1 - Notification

5.1.1 - Pre-sale Conference (10/25)

A pre-sale conference between the Purchaser and Sale Administrator is required prior to beginning any operations to determine landing and road locations. The Unit Manager or his/her representative must be contacted at least 3 days in advance to schedule the conference.

5.1.4 - Post-Sale Conference (10/16)

A post-sale conference on site between the Purchaser and sale administrator is required 3 days prior to the completion of active logging operations to determine clean-up and repair of landings, road edges, and the fulfillment of other contract specifications.

5.1.6 - Utility R.O.W. (1/25)

It is the responsibility of the Purchaser to obtain permission from the utility company to utilize the power line and pipe lineright-of-way (R.O.W.) for operations. There is known utility interface in units 3, 4 and 5. Call Miss Dig at 811 to notify utility companies of harvesting operations near their infrastructure. Purchaser must adhere to any mitigation measures the utility companies deem necessary.

5.2 - Conduct of Operations

5.2.1 - Slash

5.2.1.8 - Slash Height (12/08)

No slash or tree tops may exceed 24 inches in height.

5.2.3 - Operating Restrictions

5.2.3.4 - Oak Wilt Restriction, No Exceptions (1/18)

Within Payment Units 1, 2, 3 and 4 cutting and skidding within the sale and brushing of access roads to the sale are not permitted during the period of April 15 to July 15. No exceptions will be granted. This is necessary to reduce the spread of oak wilt.

5.2.3.6 - Bark Beetle Restriction (1/25)

In the event drought creates a high risk of pine bark beetle infestation, pine is not to be cut during the period March 1 through July 1, unless all portions of trees greater than two (2) inches in diameter are removed from the Sale Area, reduced to chips, or treated to the satisfaction of the Unit Manager or his/her representative, within 15 days of being

severed from the stump. Pine log decks, pulpwood piles and treetops that are piled for chipping in the fall or winter within a 1/4 mile of susceptible sites must be removed before March 15. Residual slash must not be placed in piles or rows and must be spread over the site for quick drying. The Department of Natural Resources will exercise this specification if the risk of damage warrants.

5.2.22 - Operating Caution

5.2.22.1 - Operating Caution (6/11)

It is recommended, but not required, that within Payment Unit(s) 1, 2, 3 and 5, cutting, skidding, and hauling occur during dry summer or frozen winter conditions. The reason for the recommendation is because wet ground condition in portions of these units.

5.2.32 - Decking/Landing Restoration (9/13)

All decking and landing areas must have the surface area restored to a condition equal to or better than before. This is to ensure the proper regeneration of the stand.

5.2.38 - No Decking Against Live Trees (2/04)

Cut products may not be decked against unmarked or designated leave trees.

5.3 - Stream Protection

5.3.2 - Parking Equipment Near Water (10/23)

Within Payment Unit(s) 2 and 5 the parking of or storage of equipment is prohibited within 100 feet of water bodies or ground water supplies. All equipment, when not in use for harvest operations, must be parked a minimum of 100 feet away from water sources (streams, rivers, lakes, ponds, vernal pools, ground water sources) and 50 feet away from slopes leading to water sources and/or riparian areas. This restriction is for preventing unforeseen oil and/or fluid leaks from contaminating water bodies and/or ground water supplies.

5.4 - Soil Protection

5.4.1 - Rutting Restriction, General (7/16)

Operations are to cease immediately if equipment and weather conditions result in rutting of roads and/or skid trails which are 12 inches or greater in depth and 50 feet in length. The Unit Manager or his/her representative may restrict hauling and/or skidding if ruts exceed the specified depth. With the Unit Manager or his/her representative's approval, the Purchaser may return to the area when the risk of rutting has decreased.

5.8 - Protection of Endangered Species

5.8.5 - Protection of Raptor Nests (3/13)

All trees with raptor nests will be protected if found during harvesting operations. Notification will be made to the Unit Manager or his/her representative who will notify the Wildlife Biologist so an onsite evaluation and recommendation can be made, if necessary.

6 - Safety and Fire Prevention

6.2 - Signing

6.2.1 - Road Posting (10/20)

The Purchaser is responsible for posting and maintaining caution signs on Dutch John Rd and other haul roads prior to beginning operations. The road must be posted at appropriate distances from the Sale Area to warn of logging activity and truck traffic. Signs must be removed when harvest operations are suspended or completed. The Purchaser will provide these signs.



TIMBER SALE MAP

This information provided by authority of Part 525, 1994 PA 451, as amended.

Sale Number
61-108-26

Date
12/22/2025

Forest Management Unit
Traverse City Mgt Unit

County
Kalkaska

Mapped By: Crigier
Cruised By: Crigier

Scale
1:20,000

Page
1

Of
1

Township 24N / 25N Range 07W Section(s) and Subdivision(s) Sec. 27 N1/2NE; Sec. 3 NENE; Sec. 33 NESW,W1/2SE; Sec. 34 N1/2NW,SWNW,NE,E1/2SE;

Cover Type

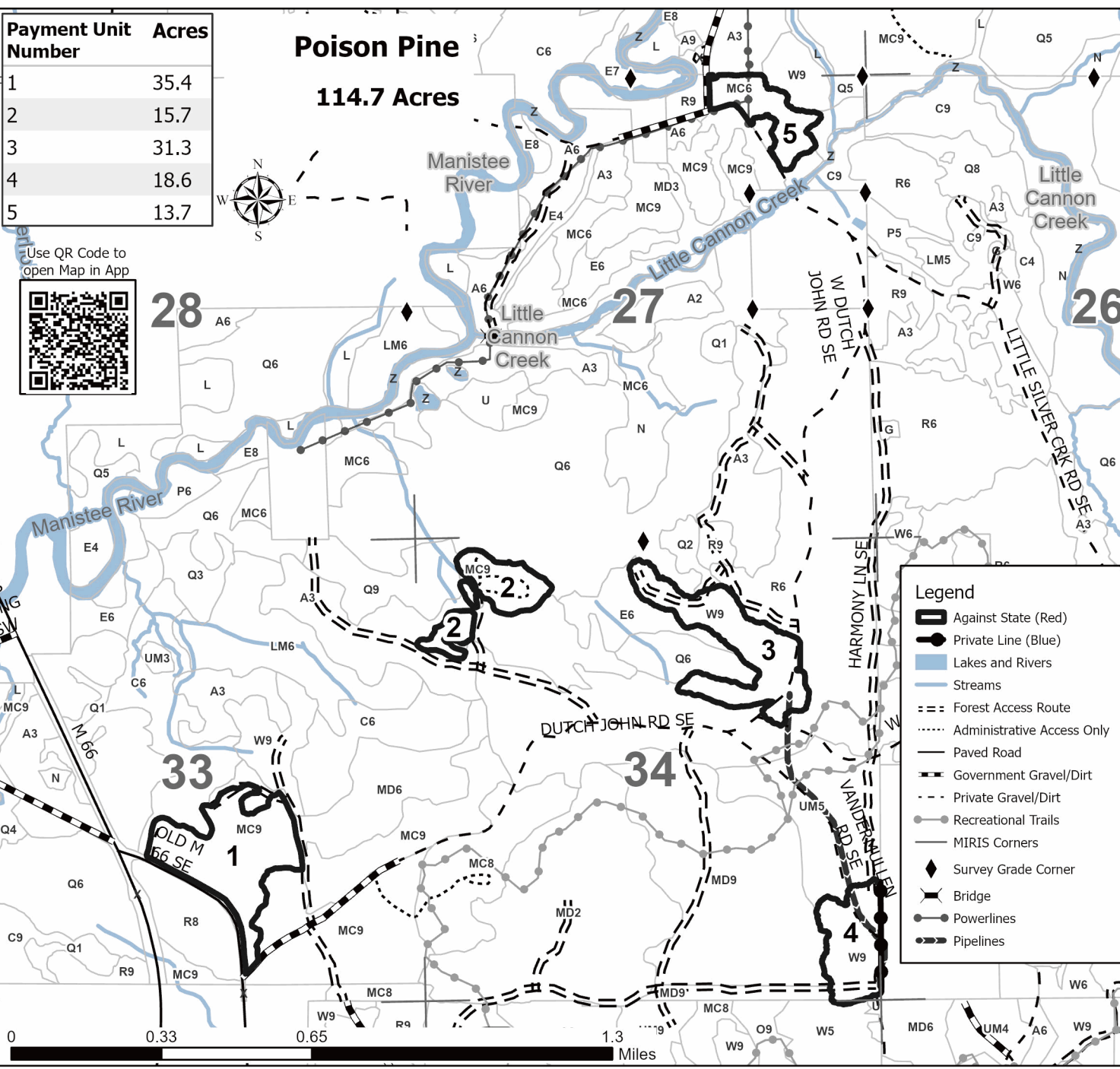
A = Aspen	J = Jack Pine	O = Oak	U = Upland Brush
B = Paper Birch	K = Rock	P = Lowland Poplar	UM = Upland Mix Forest
C = Cedar	L = Lowland Brush	Q = Mixed Swamp Conifer	V = Bog or Marsh
D = Treed Bog	LM = Lowland Mix Forest	R = Red Pine	W = White Pine
E = Swamp Hardwoods	M = Maple, Beech, Birch	S = Black Spruce	X = Non Stocked
F = Spruce/Fir	MC = Mixed Conifer	T = Tamarack	Y = Sand
G = Grass	MD = Mixed Deciduous	Z = Water	
H = Hemlock	N = Marsh		

Density

0 = Non Stocked	5 = Pole Timber Medium
1 = Seedling Sapling Poor	6 = Pole Timber Well
2 = Seedling Sapling Medium	7 = Saw Timber Poor
3 = Seedling Sapling Well	8 = Saw Timber Medium
4 = Pole Timber Poor	9 = Saw Timber Well

Payment Unit Number	Acres
1	35.4
2	15.7
3	31.3
4	18.6
5	13.7

Poison Pine
114.7 Acres



Use QR Code to open Map in App



TIMBER SALE INFORMATION

Hilly Monster Mix (61-144-25)

T27N, R08W, SEC. 4; T27N, R08W, SEC. 5; T27N, R08W, SEC. 6; T28N, R08W, SEC. 32.
Kalkaska County (Advertised Price \$46,551.45)

A timber sale contract for this lump sum, sealed bid timber sale will be awarded to the responsible bidder offering the highest sealed bid price. All units of volume listed below were estimated using the Inventory Manager computer program and the new Michigan taper model. Bids must be at or above the following advertised price for each product and species:

<u>PRODUCTS & SPECIES</u>	<u>ESTIMATED UNITS*</u>	<u>ADVERTISED PRICE</u>
Sawtimber		
B. T. Aspen	2.0 MBF	\$ 80.00 / MBF
Red Maple	0.8 MBF	\$ 66.00 / MBF
Red Oak	10.5 MBF	\$ 96.00 / MBF
Red Pine	174.5 MBF	\$ 91.00 / MBF
Sugar Maple	12.0 MBF	\$ 111.00 / MBF
White Pine	4.7 MBF	\$ 56.00 / MBF
Pulpwood		
Basswood	12 Cords	\$ 7.05 / Cord
Black Locust	63 Cords	\$ 7.65 / Cord
Mixed Aspen	804 Cords	\$ 16.50 / Cord
Mixed Hardwood	95 Cords	\$ 11.10 / Cord
Red Oak	73 Cords	\$ 20.35 / Cord
Red Pine	279 Cords	\$ 40.05 / Cord
White Pine	17 Cords	\$ 18.20 / Cord

* The total volume is statistically estimated within plus (+) or minus (-) 16.55 percent. There are an estimated 1,824 cords on this timber sale, plus or minus 302 cords at the 95% confidence level. The estimated units are final and not subject to adjustment. Prospective bidders are urged to examine this timber and to make their own estimates of quantity and quality.

BOND AND PAYMENT SCHEDULE:

1. A bond in the amount of \$2,328.00 to insure faithful performance of the conditions of the contract will be deposited by the successful bidder within 21 days of the sale award.
2. Cutting in any sale or unit without the required advance payment would be considered a trespass.
3. Total payment must be paid in advance or according to the following schedule :
 - (a) Ten percent (10%) of the sale value must be paid within 21 days of the sale award.
 - (b) The 10% down payment will be credited towards the first unit cut.
 - (c) Payment for each of the following units must be made before cutting begins in that unit:

PAYMENT UNIT NUMBER	PERCENT OF TOTAL SALE VALUE
01	8.8%
02	32.2%
03	5.1%
04	21.9%
05	5.5%
06	24.7%
07	1.8%

4. If no cutting takes place, the 10% down payment will not be refunded.
5. Operations on the contract issued will terminate on 06/30/2029.

SALE STATISTICS

Volumes were calculated in cubic feet using the Michigan taper model. Cubic foot volume includes all wood inside bark for the product indicated. For display purposes, cubic feet were converted to cords and MBF using a simple conversion factor, e.g. 79 cubic feet per cord and 185 cubic feet per MBF. The cubic foot volumes are precise; the cords and MBF volumes are not. Cubic foot volume cannot be directly converted to cords or boards with precision.

SALE VOLUMES

The total estimated sale volume may not equal the sum of the species/products due to the nature of statistical calculations associated with double sampling methodology.

VOLUME			STATISTICAL RANGE IN CORDS	
TOTAL CUBIC FEET	TOTAL CORDS	PERCENT ERROR	MINIMUM	MAXIMUM
144,084	1,824	16.55%	1,522	2,126

VDU VOLUMES

A VDU is a Volume Determination Unit. Volumes and their associated statistics are calculated at the VDU level and summarized to the sale level. There is often a one to one relationship between a VDU and a Payment Unit, but not always, depending on the cruise design. Refer to the VDU TO PAYMENT UNIT table.

	VOLUME			RANGE IN CORDS	
VDU	TOTAL CUBIC FEET	TOTAL CORDS	PERCENT ERROR	MINIMUM	MAXIMUM
4	7,950	101	57.44%	43	158
6	21,523	272	37.47%	170	375
8	32,236	408	28.21%	293	523
10	55,415	701	29.40%	495	908
14	11,211	142	78.19%	31	253
29	3,355	42	75.52%	10	75
67	12,395	157	87.45%	20	294
TOTAL:	144,084	1,824		1,062	2,585

VDU TO PAYMENT UNIT

When a VDU is associated with more than one Payment Unit (PU), the VDU volumes are assigned to the PU based on acres of the VDU within the PU.

VDU	VDU ACRES	PU	PU ACRES
TOTAL:			

DESCRIPTION OF TIMBER BY PAYMENT UNIT (PU)

PU	MARKET GROUP	PRODUCT	QUANTITY	UNIT	ACRES	ADVERTISE PRICE
1	B. T. Aspen	Sawtimber	2.0	MBF	6.9	\$4,113.15
	Red Pine		23.0	MBF		
	Black Locust	Pulpwood	63	Cords		
	Mixed Aspen		1	Cords		
	<i>B. T. Aspen</i>		1	<i>Cords</i>		
	Red Pine		34	Cords		
2	Red Pine	Sawtimber	90.5	MBF	25.6	\$14,943.10
	White Pine		4.7	MBF		
	Mixed Aspen	Pulpwood	11	Cords		
	<i>B. T. Aspen</i>		11	<i>Cords</i>		
	Mixed Hardwood		2	Cords		
	<i>Ironwood</i>		2	<i>Cords</i>		
	Red Oak		12	Cords		
	Red Pine		142	Cords		
	White Pine		17	Cords		
3	Red Oak	Sawtimber	3.8	MBF	6.9	\$2,374.70
	Sugar Maple		9.8	MBF		
	Mixed Aspen	Pulpwood	7	Cords		
	<i>B. T. Aspen</i>		7	<i>Cords</i>		
	Mixed Hardwood		47	Cords		
	<i>Beech</i>		21	<i>Cords</i>		
	<i>Ironwood</i>		2	<i>Cords</i>		
	<i>Sugar Maple</i>		24	<i>Cords</i>		
	Red Oak		14	Cords		
	4		Red Oak	Sawtimber		
Red Pine		61.0	MBF			
Mixed Aspen		Pulpwood	12	Cords		
<i>B. T. Aspen</i>			12	<i>Cords</i>		
Red Oak			13	Cords		
Red Pine			103	Cords		
5	Red Maple	Sawtimber	0.8	MBF	9.9	\$2,543.85
	Red Oak		4.4	MBF		
	Sugar Maple		1.0	MBF		
	Basswood	Pulpwood	12	Cords		
	Mixed Aspen		93	Cords		
	<i>B. T. Aspen</i>		55	<i>Cords</i>		
	<i>Quaking Aspen</i>		38	<i>Cords</i>		
	Mixed Hardwood		14	Cords		
	<i>Red Maple</i>		3	<i>Cords</i>		
	<i>Sugar Maple</i>		11	<i>Cords</i>		
	Red Oak		9	Cords		
6	Mixed Aspen	Pulpwood	666	Cords	18.0	\$11,516.25
	<i>B. T. Aspen</i>		666	<i>Cords</i>		
	Mixed Hardwood		20	Cords		
	<i>Red Maple</i>		20	<i>Cords</i>		
	Red Oak		15	Cords		
7	Red Oak	Sawtimber	1.5	MBF	6.9	\$844.90
	Sugar Maple		1.2	MBF		
	Mixed Aspen	Pulpwood	14	Cords		
	<i>B. T. Aspen</i>		14	<i>Cords</i>		
	Mixed Hardwood		12	Cords		
	<i>Ironwood</i>		5	<i>Cords</i>		
	<i>Red Maple</i>		3	<i>Cords</i>		
	<i>Sugar Maple</i>		4	<i>Cords</i>		
	Red Oak		10	Cords		

TOTAL:	204.5	MBF
--------	-------	-----

TOTAL:	1,343	Cords
--------	-------	-------

Sale Specific Conditions & Requirements

Sale Name: Hilly Monster Mix

Sale Number: 61-144-25 Seq#: 2

1 - Sale Area

1.2 - Boundaries

1.2.1 - Painted Boundaries (9/19)

The sale boundary and Payment Unit boundaries are marked and identified by blue, red and yellow paint. Exterior sale boundary lines against private property are marked with blue paint. Exterior sale boundary lines against state are marked with red paint. Interior Payment Unit boundaries are marked with yellow paint. Retention patches are marked with red paint; no harvesting activities may occur within these areas. The painted boundary line trees are not Included Timber and are to be protected unless marked with orange paint. Yellow painted trees designating an interior Payment Unit boundary are only to be cut when all surrounding Payment Units have been paid.

2 - Timber Specifications

2.1 - Included Timber

2.1.1 - Clearcut Unit(s) with Unmerchantable Trees (6/14)

Within Payment Unit(s) 5, 6, and 7, cut all trees that are two (2) inches or more at DBH, except do not cut white oak or white pine.

2.1.3 - Cut Tree Marked Unit(s) (12/08)

Within Payment Unit(s) 1, 2, 3 and 4, all trees are designated for cutting when marked with orange paint above and below stump height, regardless of merchantability. In addition, cut all aspen, jack pine and black locust.

3 - Payments

3.3 - Pre-measured Sales

3.3.4 - Dividing Payment Units (7/14)

Payment Unit(s) may be divided at the request of the Purchaser and upon approval of the Unit Manager. Dividing Payment Units is a contract modification which requires a Timber Sale Contract Amendment. There will be only one division per Payment Unit.

4 - Transportation

4.1 - Construction

4.1.6 - Road Construction (4/24)

Construction of new roads or improvements of existing roads shall be done in such a way as to minimize the environmental and visual impacts. Merchantable trees shall be cut and utilized unless otherwise directed. Non-merchantable trees shall be severed and laid flat on the ground. Slash shall be scattered, not left in windrows, and kept a minimum of 10 feet back from the road edge. Stumps shall be set upright, not left on edge, and be moved at least 10 feet away from the road edge.

5 - Operations

5.1 - Notification

5.1.1 - Pre-sale Conference (10/16)

A pre-sale conference on site between the Purchaser and Sale Administrator is required prior to beginning any operations to determine landing and road locations. The Unit Manager or his/her representative must be contacted at least 5 days in advance to schedule the conference.

5.1.4 - Post-Sale Conference (10/16)

A post-sale conference on site between the Purchaser and sale administrator is required five (5) days prior to the completion of active logging operations to determine clean-up and repair of landings, road edges, and the fulfillment of other contract specifications.

5.2 - Conduct of Operations

5.2.1 - Slash

5.2.1.8 - Slash Height (12/08)

No slash or tree tops may exceed 24 inches in height.

5.2.2 - Hazard Trees/Snags

5.2.2.1 - Den Trees (10/16)

Obvious hollow and/or den trees shall be protected and left standing unless they are a safety hazard.

5.2.3 - Operating Restrictions

5.2.3.3 - Bark Slippage Restriction (3/09)

Within Payment Unit(s) 1-4, unless changed by written agreement, cutting and skidding are not permitted during the period of April 15 to July 15. This restriction is because of bark slippage.

5.2.3.4 - Oak Wilt Restriction, No Exceptions (1/18)

Within Payment Unit(s) 1-7, cutting and skidding within the sale and brushing of access roads to the sale are not permitted during the period of April 15 to July 15. No exceptions will be granted. This is necessary to reduce the spread of oak wilt.

5.2.4 - Dead and Down Creation

5.2.4.4 - Dead and Down Creation, Grouse (6/18)

To encourage grouse and other wildlife, in Payment Unit(s) 5, 6, and 7 leave one, 12" diameter or larger log-length (8 foot minimum) piece on the ground for every two (2) acres. These trees will be evenly scattered throughout the Payment Unit, preferably at least two chains from any roads, two-tracks, or trails open to vehicles. This can be an unmerchantable piece or a full tree.

5.2.16 - Equipment Recommended (11/18)

Within Payment Unit(s) 1, 2, 3, and 4 it is recommended that all products are produced as roundwood and forwarded to existing roads or landing areas in final product length. This is to prevent damage to the residual trees within the harvest units.

5.4 - Soil Protection

5.4.1 - Rutting Restriction, General (7/16)

Operations are to cease immediately if equipment and weather conditions result in rutting of roads and/or skid trails which are 12 inches or greater in depth and 50 feet in length. The Unit Manager or his/her representative may restrict hauling and/or skidding if ruts exceed the specified depth. With the Unit Manager or his/her representative's approval, the Purchaser may return to the area when the risk of rutting has decreased.

5.8 - Protection of Endangered Species

5.8.5 - Protection of Raptor Nests (3/13)

All trees with raptor nests will be protected if found during harvesting operations. Notification will be made to the Unit Manager or his/her representative who will notify the Wildlife Biologist so an onsite evaluation and recommendation can be made, if necessary.



TIMBER SALE MAP

This information provided by authority of Part 525, 1994 PA 451, as amended.

Sale Number
61-144-25

Date
09/08/2025

Forest Management Unit	County	Mapped By: Roell
Traverse City Mgt Unit	Kalkaska	Cruised By: Roell

Scale	Page	Of
1:20,000	1	1

Township	Range	Section(s) and Subdivision(s)
27N / 28N	08W	Sec. 32 SWSW,S1/2SE; Sec. 4 NENE; Sec. 5 N1/2NW,SWNW,NWNE,NESW,NWSE; Sec. 6 NENE;

Cover Type

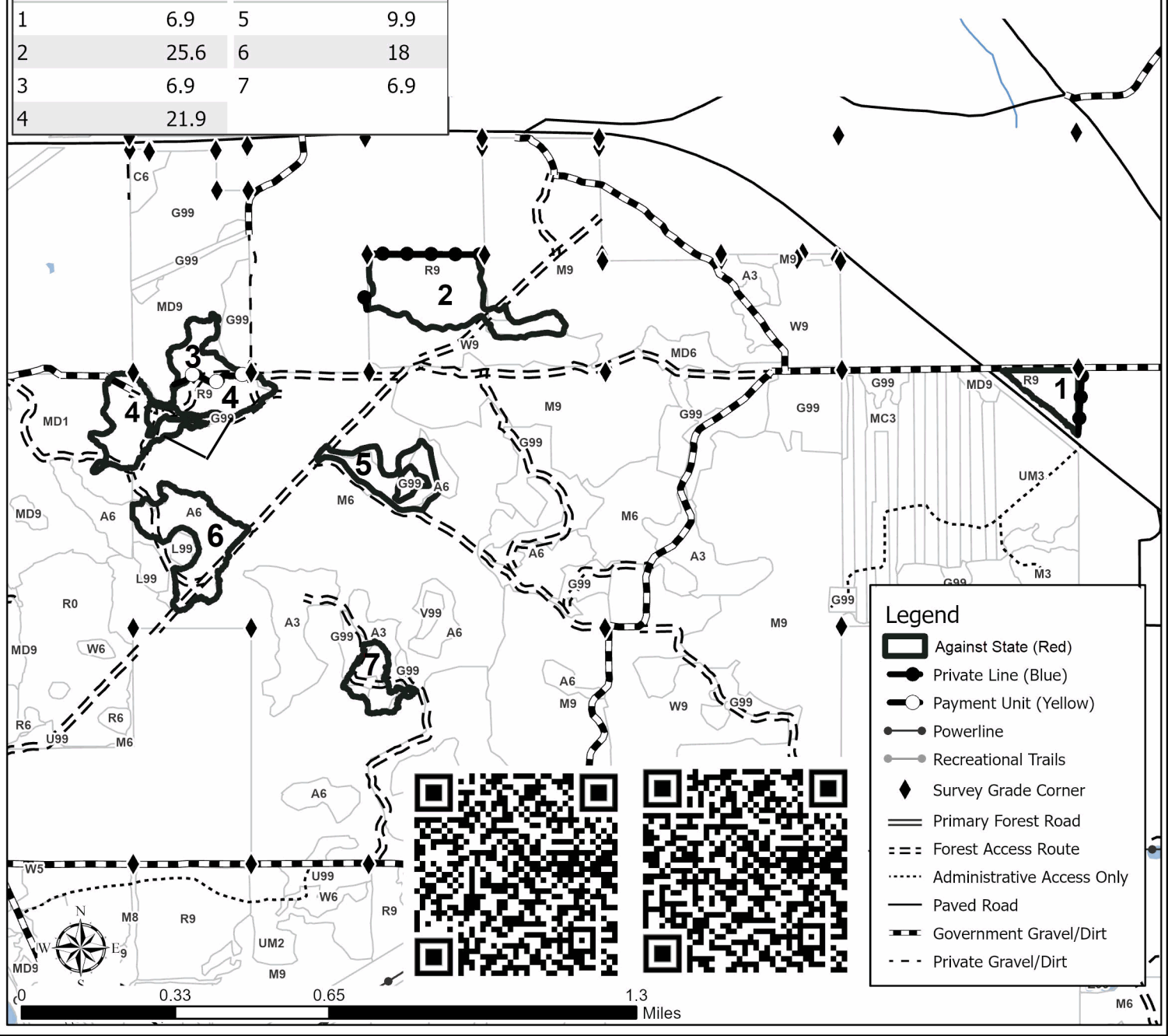
A = Aspen	J = Jack Pine	O = Oak	U = Upland Brush
B = Paper Birch	K = Rock	P = Lowland Poplar	UM = Upland Mix Forest
C = Cedar	L = Lowland Brush	Q = Mixed Swamp Conifer	V = Bog or Marsh
D = Treed Bog	LM = Lowland Mix Forest	R = Red Pine	W = White Pine
E = Swamp Hardwoods	M = Maple, Beech, Birch	S = Black Spruce	X = Non Stocked
F = Spruce/Fir	MC = Mixed Conifer	T = Tamarack	Y = Sand
G = Grass	MD = Mixed Deciduous	Z = Water	
H = Hemlock	N = Marsh		

Density

0 = Non Stocked	5 = Pole Timber Medium
1 = Seedling Sapling Poor	6 = Pole Timber Well
2 = Seedling Sapling Medium	7 = Saw Timber Poor
3 = Seedling Sapling Well	8 = Saw Timber Medium
4 = Pole Timber Poor	9 = Saw Timber Well

Payment Unit Number	Acres	Payment Unit Number	Acres
1	6.9	5	9.9
2	25.6	6	18
3	6.9	7	6.9
4	21.9		

Hilly Monster Mix 96.1 Acres



TIMBER SALE INFORMATION

Hazy Hearted Hardwood (61-145-25)

T27N, R08W, SEC. 4; T27N, R08W, SEC. 5; T28N, R08W, SEC. 33.
Kalkaska County (Advertised Price \$44,178.05)

A timber sale contract for this lump sum, sealed bid timber sale will be awarded to the responsible bidder offering the highest sealed bid price. All units of volume listed below were estimated using the Inventory Manager computer program and the new Michigan taper model. Bids must be at or above the following advertised price for each product and species:

<u>PRODUCTS & SPECIES</u>	<u>ESTIMATED UNITS*</u>	<u>ADVERTISED PRICE</u>
Sawtimber		
Basswood	23.7 MBF	\$ 59.00 / MBF
Beech	3.3 MBF	\$ 95.00 / MBF
Black Cherry	10.6 MBF	\$ 84.00 / MBF
Red Oak	18.5 MBF	\$ 96.00 / MBF
Sugar Maple	144.2 MBF	\$ 111.00 / MBF
White Pine	12.2 MBF	\$ 56.00 / MBF
Pulpwood		
B. T. Aspen	35 Cords	\$ 16.50 / Cord
Basswood	45 Cords	\$ 7.05 / Cord
Mixed Hardwood	559 Cords	\$ 11.10 / Cord
Red Oak	30 Cords	\$ 20.35 / Cord
Red Pine	310 Cords	\$ 40.05 / Cord
White Pine	164 Cords	\$ 18.20 / Cord

* The total volume is statistically estimated within plus (+) or minus (-) 20.24 percent. There are an estimated 1,639 cords on this timber sale, plus or minus 332 cords at the 95% confidence level. The estimated units are final and not subject to adjustment. Prospective bidders are urged to examine this timber and to make their own estimates of quantity and quality.

BOND AND PAYMENT SCHEDULE:

1. A bond in the amount of \$2,209.00 to insure faithful performance of the conditions of the contract will be deposited by the successful bidder within 21 days of the sale award.
2. Cutting in any sale or unit without the required advance payment would be considered a trespass.
3. Total payment must be paid in advance or according to the following schedule :
 - (a) Ten percent (10%) of the sale value must be paid within 21 days of the sale award.
 - (b) The 10% down payment will be credited towards the first unit cut.
 - (c) Payment for each of the following units must be made before cutting begins in that unit:

PAYMENT UNIT NUMBER	PERCENT OF TOTAL SALE VALUE
01	19.8%
02	33.2%
03	36.7%
04	10.3%
4. If no cutting takes place, the 10% down payment will not be refunded.
5. Operations on the contract issued will terminate on 06/30/2029.

SALE STATISTICS

Volumes were calculated in cubic feet using the Michigan taper model. Cubic foot volume includes all wood inside bark for the product indicated. For display purposes, cubic feet were converted to cords and MBF using a simple conversion factor, e.g. 79 cubic feet per cord and 185 cubic feet per MBF. The cubic foot volumes are precise; the cords and MBF volumes are not. Cubic foot volume cannot be directly converted to cords or boards with precision.

SALE VOLUMES

The total estimated sale volume may not equal the sum of the species/products due to the nature of statistical calculations associated with double sampling methodology.

VOLUME		STATISTICAL RANGE IN CORDS		
TOTAL CUBIC FEET	TOTAL CORDS	PERCENT ERROR	MINIMUM	MAXIMUM
129,447	1,639	20.24%	1,307	1,970

VDU VOLUMES

A VDU is a Volume Determination Unit. Volumes and their associated statistics are calculated at the VDU level and summarized to the sale level. There is often a one to one relationship between a VDU and a Payment Unit, but not always, depending on the cruise design. Refer to the VDU TO PAYMENT UNIT table.

VDU	VOLUME		PERCENT ERROR	RANGE IN CORDS	
	TOTAL CUBIC FEET	TOTAL CORDS		MINIMUM	MAXIMUM
11	16,259	206	40.57%	122	289
20	29,301	371	36.42%	236	506
42	42,556	539	30.04%	377	701
64	41,332	523	49.66%	263	783
TOTAL:	129,447	1,639		998	2,279

VDU TO PAYMENT UNIT

When a VDU is associated with more than one Payment Unit (PU), the VDU volumes are assigned to the PU based on acres of the VDU within the PU.

VDU	VDU ACRES	PU	PU ACRES
TOTAL:			

DESCRIPTION OF TIMBER BY PAYMENT UNIT (PU)

PU	MARKET GROUP	PRODUCT	QUANTITY	UNIT	ACRES	ADVERTISE PRICE
1	Basswood	Sawtimber	5.0	MBF	12.6	\$8,750.05
	Beech		3.3	MBF		
	Black Cherry		1.9	MBF		
	Red Oak		18.5	MBF		
	Sugar Maple		28.8	MBF		
	B. T. Aspen	Pulpwood	35	Cords		
	Basswood		19	Cords		
	Mixed Hardwood		152	Cords		
	<i>Beech</i>		40	<i>Cords</i>		
	<i>Black Cherry</i>		12	<i>Cords</i>		
	<i>Ironwood</i>		3	<i>Cords</i>		
	<i>Sugar Maple</i>		97	<i>Cords</i>		
	Red Oak		30	Cords		
2	Basswood	Sawtimber	15.3	MBF	14.1	\$14,659.95
	Black Cherry		6.3	MBF		
	Sugar Maple		91.8	MBF		
	White Pine		2.2	MBF		
	Basswood		Pulpwood	21		
	Mixed Hardwood	246		Cords		
	<i>Beech</i>	16		<i>Cords</i>		
	<i>Black Cherry</i>	4		<i>Cords</i>		
	<i>Sugar Maple</i>	226		<i>Cords</i>		
	White Pine	2	Cords			
3	White Pine	Sawtimber	10.0	MBF	16.6	\$16,234.70
	Mixed Hardwood	Pulpwood	28	Cords		
	<i>Black Cherry</i>		26	<i>Cords</i>		
	<i>Ironwood</i>		2	<i>Cords</i>		
	Red Pine		310	Cords		
	White Pine	162	Cords			
4	Basswood	Sawtimber	3.4	MBF	22.7	\$4,533.35
	Black Cherry		2.4	MBF		
	Sugar Maple		23.6	MBF		
	Basswood	Pulpwood	5	Cords		
	Mixed Hardwood		133	Cords		
	<i>Beech</i>		29	<i>Cords</i>		
	<i>Black Cherry</i>		1	<i>Cords</i>		
	<i>Ironwood</i>		37	<i>Cords</i>		
	<i>Sugar Maple</i>		66	<i>Cords</i>		
TOTAL:			212.5	MBF		
TOTAL:			1,143	Cords		

Sale Specific Conditions & Requirements

Sale Name: Hazy Hearted Hardwood

Sale Number: 61-145-25 Seq#: 2

1 - Sale Area

1.2 - Boundaries

1.2.1 - Painted Boundaries (9/19)

The sale boundary and Payment Unit boundaries are marked and identified by blue, red and yellow paint. Exterior sale boundary lines against private property are marked with blue paint. Exterior sale boundary lines against state are marked with red paint. Interior Payment Unit boundaries are marked with yellow paint. The painted boundary line trees are not Included Timber and are to be protected unless marked with orange paint. Yellow painted trees designating an interior Payment Unit boundary are only to be cut when all surrounding Payment Units have been paid.

2 - Timber Specifications

2.1 - Included Timber

2.1.1 - Clearcut Unit(s) with Unmerchantable Trees (6/14)

Within Payment Unit(s) 1 and 2, cut all trees that are two (2) inches or more at DBH, except trees marked with green paint.

2.1.3 - Cut Tree Marked Unit(s) (12/08)

Within Payment Unit(s) 4, all trees are designated for cutting when marked with orange paint above and below stump height, regardless of merchantability. In addition, cut all aspen, beech and ironwood.

2.1.5 - Overstory Removal Unit(s) (8/11)

Within Payment Unit(s) 3, all trees with DBH equal to or greater than 4.6 inches, which meet minimum piece specifications in 2.2 Utilization, are designated for cutting, except do not cut sugar maple.

4 - Transportation

4.1 - Construction

4.1.6 - Road Construction (4/24)

Construction of new roads or improvements of existing roads shall be done in such a way as to minimize the environmental and visual impacts. Merchantable trees shall be cut and utilized unless otherwise directed. Non-merchantable trees shall be severed and laid flat on the ground. Slash shall be scattered, not left in windrows, and kept a minimum of 10 feet back from the road edge. Stumps shall be set upright, not left on edge, and be moved at least 10 feet away from the road edge.

5 - Operations

5.1 - Notification

5.1.1 - Pre-sale Conference (10/16)

A pre-sale conference on site between the Purchaser and Sale Administrator is required prior to beginning any operations to determine, skid trail locations within payment units 1 and 2, landing and road locations. The Unit Manager or his/her representative must be contacted at least 5 days in advance to schedule the conference.

5.1.4 - Post-Sale Conference (10/16)

A post-sale conference on site between the Purchaser and sale administrator is required 5 days prior to the completion of active logging operations to determine clean-up and repair of landings, road edges, and the fulfillment of other contract specifications.

5.2 - Conduct of Operations

5.2.1 - Slash

5.2.1.8 - Slash Height (12/08)

No slash or tree tops may exceed 24 inches in height.

5.2.2 - Hazard Trees/Snags

5.2.2.1 - Den Trees (10/16)

Obvious hollow and/or den trees shall be protected and left standing unless they are a safety hazard.

5.2.3 - Operating Restrictions

5.2.3.3 - Bark Slippage Restriction (3/09)

Within Payment Unit(s) 1, 2 and 4, unless changed by written agreement, cutting and skidding are not permitted during the period of April 15 to July 15. This restriction is because of bark slippage.

5.2.3.4 - Oak Wilt Restriction, No Exceptions (1/18)

Within Payment Unit(s) 1, 2 and 4 cutting and skidding within the sale and brushing of access roads to the sale are not permitted during the period of April 15 to July 15. No exceptions will be granted. This is necessary to reduce the spread of oak wilt.

5.2.16 - Equipment Recommended (11/18)

Within Payment Unit(s) 4, it is recommended that all products are produced as roundwood and forwarded to existing roads or landing areas in final product length. This is to prevent damage to the residual trees within the harvest units.

5.2.32 - Decking/Landing Restoration (9/13)

All decking and landing areas must have the surface area restored to a condition equal to or better than before. This is to ensure the proper regeneration of the stand. Wood debris, chips and "cookies" from trimmings must be removed or scattered away from landing and loading areas and may not be windrowed on the edge.

5.4 - Soil Protection

5.4.1 - Rutting Restriction, General (7/16)

Operations are to cease immediately if equipment and weather conditions result in rutting of roads and/or skid trails which are 12 inches or greater in depth and 50 feet in length. The Unit Manager or his/her representative may restrict hauling and/or skidding if ruts exceed the specified depth. With the Unit Manager or his/her representative's approval, the Purchaser may return to the area when the risk of rutting has decreased.

5.8 - Protection of Endangered Species

5.8.5 - Protection of Raptor Nests (3/13)

All trees with raptor nests will be protected if found during harvesting operations. Notification will be made to the Unit Manager or his/her representative who will notify the Wildlife Biologist so an onsite evaluation and recommendation can be made, if necessary.



TIMBER SALE MAP

This information provided by authority of Part 525, 1994 PA 451, as amended.

Sale Number
61-145-25

Date
09/24/2025

Forest Management Unit
Traverse City Mgt Unit

County
Kalkaska

Mapped By: Roell
Cruised By: Roell

Scale
1:10,000

Page
1

Of
1

Township
27N / 28N

Range
08W

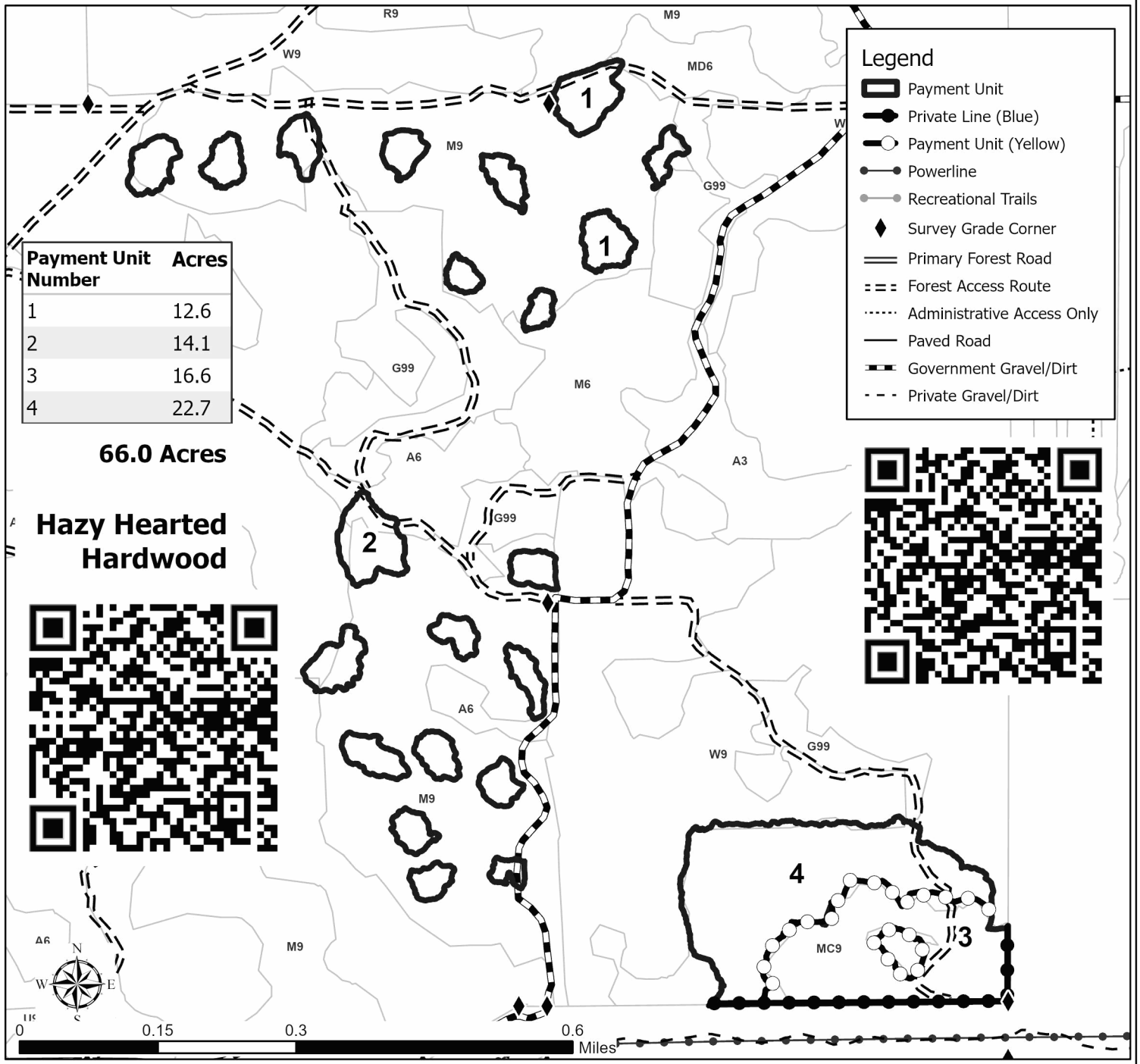
Section(s) and
Subdivision(s) Sec. 33 SWSW; Sec. 4 W1/2NW,SW; Sec. 5 N1/2NE,SENE,N1/2SE,SESE;

Cover Type

A = Aspen	J = Jack Pine	O = Oak	U = Upland Brush
B = Paper Birch	K = Rock	P = Lowland Poplar	UM = Upland Mix Forest
C = Cedar	L = Lowland Brush	Q = Mixed Swamp Conifer	V = Bog or Marsh
D = Treed Bog	LM = Lowland Mix Forest	R = Red Pine	W = White Pine
E = Swamp Hardwoods	M = Maple, Beech, Birch	S = Black Spruce	X = Non Stocked
F = Spruce/Fir	MC = Mixed Conifer	T = Tamarack	Y = Sand
G = Grass	MD = Mixed Deciduous	Z = Water	
H = Hemlock	N = Marsh		

Density

0 = Non Stocked	5 = Pole Timber Medium
1 = Seedling Sapling Poor	6 = Pole Timber Well
2 = Seedling Sapling Medium	7 = Saw Timber Poor
3 = Seedling Sapling Well	8 = Saw Timber Medium
4 = Pole Timber Poor	9 = Saw Timber Well



Payment Unit Number	Acres
1	12.6
2	14.1
3	16.6
4	22.7

66.0 Acres

**Hazy Hearted
Hardwood**



Nervous Buddy Aspen (61-101-26)
T27N, R05W, SEC. 21; T27N, R05W, SEC. 22; Kalkaska COUNTY

In response to the notice of sale to be held 4:00 p.m. (local time) on May 7, 2026, I am hereby submitting my sealed bid (firm offer) for the following forest products to be cut. Bids for individual species must be at or above the advertised price. All non-responsive bid forms may be rejected.

<u>PRODUCTS & SPECIES</u>	<u>ESTIMATED VOLUME*</u>	<u>ADVERTISED PRICE</u>	<u>BID PRICE/UNIT</u>
Sawtimber			
Red Oak	8.1 MBF	\$ 144.00/MBF	\$ _____
Red Pine	18.7 MBF	\$ 137.00/MBF	\$ _____
Pulpwood			
Balsam Fir	9 Cords	\$ 32.60/Cord	\$ _____
Black Cherry	98 Cords	\$ 16.65/Cord	\$ _____
Jack Pine	13 Cords	\$ 13.40/Cord	\$ _____
Mixed Aspen	1,281 Cords	\$ 24.75/Cord	\$ _____
Red Maple	76 Cords	\$ 16.65/Cord	\$ _____
Red Oak	40 Cords	\$ 30.55/Cord	\$ _____
Red Pine	7 Cords	\$ 60.10/Cord	\$ _____
White Pine	207 Cords	\$ 27.30/Cord	\$ _____

*The volumes are statistically estimated within plus (+) or minus (-) 18.76 percent at 95% confidence level. These estimated volumes are final and not subject to adjustment. Prospective bidders are urged to examine this timber and to make their own estimates of quantity and quality.

I understand that any or all bids may be rejected. All bids must be signed and all bid items must be bid or the bid form may be rejected. I also understand that consideration and awarding a contract will be based upon my past performance and ability to complete the contract based upon equipment and staffing subject to my control.

FEDERAL ID: _____ or SOCIAL SECURITY NUMBER: _____

Company or individual bidding: _____

Company representative's name: _____

Address: _____

City: _____ State: _____ Zip: _____

IF AVAILABLE, PLEASE PLACE THE PERSONALIZED LABEL FROM YOUR PROSPECTUS IN THE ABOVE BOX.

Individual or company representative's signature: _____ Date: _____

Phone number : _____ Email (optional): _____

THE WINNING BIDDER MUST COMPLETE THE VERIFICATION OF WORKER'S DISABILITY COMPENSATION ACT COMPLIANCE (ON REVERSE SIDE IF DOUBLE SIDED) WITHIN 21 DAYS OF SALE AWARD DATE



FOR DEPARTMENT USE ONLY	
Sale Number (XX - XXX - XX - XX)	
Forest Management Unit:	

TIMBER SALE VERIFICATION OF WORKER'S DISABILITY COMPENSATION ACT COMPLIANCE

As required by Act 317, P.A. 1969 (Worker's Compensation) and
Part 5 of Act 451 of 1994, as amended.

VERIFICATION OF WORKER'S DISABILITY COMPENSATION ACT COMPLIANCE

- This verification must be completed and submitted within 21 days of contract award and prior to the issuance of the timber sale contract.
- In addition, if boxes 2B or 2C are checked, then Notice of Exclusion or Certificate of Insurance must be submitted within twenty-one (21) days of the contract award and prior to the issuance of the timber sale contract.
- All information must be typed or printed except for written signatures.

Please Check Appropriate Categories:

1. My business is organized as (you **must** check one of the boxes below):
 - A. Sole Proprietorship (individual)
 - B. Partnership
 - C. Corporation
2. You **must** check one of the boxes below:
 - A. I certify my business is a sole proprietorship and it has no employees but the sole proprietor. I am not subject to the Worker's Compensation Laws.
 - B. I certify my business has satisfied its obligation to the Worker's Compensation Act through the use of an approved Notice of Exclusion (BWC-337, Rev. 5/96). I will provide a copy of the Notice of Exclusion within 21 days of the contract award. (For questions or a copy of the BWC-337, please call the Worker's Compensation Bureau at 517-322-1195).
 - C. I certify my business has a Worker's Compensation Policy. I will provide an original Certificate of Insurance within twenty-one (21) days of the contract award.
3. If you have checked item 2(A) or 2(B), you **must** indicate the number of **both** full-time and part-time employees, other than yourself, including family members and active partners (if none, you must enter "0").

_____ Full-time Employees

_____ Part-time Employees

Name of Business		Federal ID (or) Social Security No.	
Address		Telephone ()	
City	State	ZIP	

I hereby certify that the above information is true and correct. I agree to notify the Michigan DNR of any changes that occur in factors affecting my coverage during any of my present and future operations.

Signature of Owner or Authorized Representative

Title

Date

Please complete the "SEALED BID" information on the next page

Deer Camp Red Pine (61-102-26)
T27N, R05W, SEC. 22; Kalkaska COUNTY

In response to the notice of sale to be held 4:00 p.m. (local time) on May 7, 2026, I am hereby submitting my sealed bid (firm offer) for the following forest products to be cut. Bids for individual species must be at or above the advertised price. All non-responsive bid forms may be rejected.

<u>PRODUCTS & SPECIES</u>	<u>ESTIMATED VOLUME*</u>	<u>ADVERTISED PRICE</u>	<u>BID PRICE/UNIT</u>
Sawtimber			
Red Maple	10.6 MBF	\$ 100.00/MBF	\$ _____
Red Pine	309.5 MBF	\$ 137.00/MBF	\$ _____
White Pine	4.6 MBF	\$ 84.00/MBF	\$ _____
Pulpwood			
Black Cherry	13 Cords	\$ 16.65/Cord	\$ _____
Jack Pine	183 Cords	\$ 13.40/Cord	\$ _____
Mixed Aspen	173 Cords	\$ 24.75/Cord	\$ _____
Red Maple	53 Cords	\$ 16.65/Cord	\$ _____
Red Pine	254 Cords	\$ 60.10/Cord	\$ _____
White Pine	70 Cords	\$ 27.30/Cord	\$ _____

*The volumes are statistically estimated within plus (+) or minus (-) 18.58 percent at 95% confidence level. These estimated volumes are final and not subject to adjustment. Prospective bidders are urged to examine this timber and to make their own estimates of quantity and quality.

I understand that any or all bids may be rejected. All bids must be signed and all bid items must be bid or the bid form may be rejected. I also understand that consideration and awarding a contract will be based upon my past performance and ability to complete the contract based upon equipment and staffing subject to my control.

FEDERAL ID: ____ - ____ - ____ or SOCIAL SECURITY NUMBER: ____ - ____ - ____

Company or individual bidding: _____

Company representative's name: _____

Address: _____

City: _____ State: _____ Zip: _____

IF AVAILABLE, PLEASE PLACE THE PERSONALIZED LABEL FROM YOUR PROSPECTUS IN THE ABOVE BOX.

Individual or company representative's signature: _____ Date: _____

Phone number : _____ Email (optional): _____

THE WINNING BIDDER MUST COMPLETE THE VERIFICATION OF WORKER'S DISABILITY COMPENSATION ACT COMPLIANCE (ON REVERSE SIDE IF DOUBLE SIDED) WITHIN 21 DAYS OF SALE AWARD DATE



FOR DEPARTMENT USE ONLY
Sale Number (XX - XXX - XX - XX)
Forest Management Unit:

TIMBER SALE VERIFICATION OF WORKER'S DISABILITY COMPENSATION ACT COMPLIANCE

*As required by Act 317, P.A. 1969 (Worker's Compensation) and
Part 5 of Act 451 of 1994, as amended.*

VERIFICATION OF WORKER'S DISABILITY COMPENSATION ACT COMPLIANCE

- This verification must be completed and submitted within 21 days of contract award and prior to the issuance of the timber sale contract.
- In addition, if boxes 2B or 2C are checked, then Notice of Exclusion or Certificate of Insurance must be submitted within twenty-one (21) days of the contract award and prior to the issuance of the timber sale contract.
- All information must be typed or printed except for written signatures.

Please Check Appropriate Categories:

1. My business is organized as (you **must** check one of the boxes below):
 - A. Sole Proprietorship (individual)
 - B. Partnership
 - C. Corporation
2. You **must** check one of the boxes below:
 - A. I certify my business is a sole proprietorship and it has no employees but the sole proprietor. I am not subject to the Worker's Compensation Laws.
 - B. I certify my business has satisfied its obligation to the Worker's Compensation Act through the use of an approved Notice of Exclusion (BWC-337, Rev. 5/96). I will provide a copy of the Notice of Exclusion within 21 days of the contract award. (For questions or a copy of the BWC-337, please call the Worker's Compensation Bureau at 517-322-1195).
 - C. I certify my business has a Worker's Compensation Policy. I will provide an original Certificate of Insurance within twenty-one (21) days of the contract award.
3. If you have checked item 2(A) or 2(B), you **must** indicate the number of **both** full-time and part-time employees, other than yourself, including family members and active partners (if none, you must enter "0").

_____ Full-time Employees

_____ Part-time Employees

Name of Business		Federal ID (or) Social Security No.	
Address		Telephone ()	
City	State	ZIP	

I hereby certify that the above information is true and correct. I agree to notify the Michigan DNR of any changes that occur in factors affecting my coverage during any of my present and future operations.

Signature of Owner or Authorized Representative

Title

Date

Please complete the "SEALED BID" information on the next page

Black Coffee Aspen (61-104-26)

T27N, R05W, SEC. 14; T27N, R05W, SEC. 22; T27N, R05W, SEC. 23; Kalkaska

In response to the notice of sale to be held 4:00 p.m. (local time) on May 7, 2026, I am hereby submitting my sealed bid (firm offer) for the following forest products to be cut. Bids for individual species must be at or above the advertised price. All non-responsive bid forms may be rejected.

<u>PRODUCTS & SPECIES</u>	<u>ESTIMATED VOLUME*</u>	<u>ADVERTISED PRICE</u>	<u>BID PRICE/UNIT</u>
Sawtimber			
Black Cherry	21.5 MBF	\$ 127.00/MBF	\$ _____
Red Maple	16.7 MBF	\$ 100.00/MBF	\$ _____
Red Pine	8.8 MBF	\$ 137.00/MBF	\$ _____
White Pine	44.5 MBF	\$ 84.00/MBF	\$ _____
Pulpwood			
Black Cherry	370 Cords	\$ 16.65/Cord	\$ _____
Jack Pine	21 Cords	\$ 13.40/Cord	\$ _____
Mixed Aspen	1,129 Cords	\$ 24.75/Cord	\$ _____
Mixed Hardwood	22 Cords	\$ 16.65/Cord	\$ _____
Red Maple	227 Cords	\$ 16.65/Cord	\$ _____
Red Pine	26 Cords	\$ 60.10/Cord	\$ _____
White Pine	337 Cords	\$ 27.30/Cord	\$ _____

*The volumes are statistically estimated within plus (+) or minus (-) 17.54 percent at 95% confidence level. These estimated volumes are final and not subject to adjustment. Prospective bidders are urged to examine this timber and to make their own estimates of quantity and quality.

I understand that any or all bids may be rejected. All bids must be signed and all bid items must be bid or the bid form may be rejected. I also understand that consideration and awarding a contract will be based upon my past performance and ability to complete the contract based upon equipment and staffing subject to my control.

FEDERAL ID: _____ or SOCIAL SECURITY NUMBER: _____

Company or individual bidding: _____

Company representative's name: _____

Address: _____

City: _____ State: _____ Zip: _____

IF AVAILABLE, PLEASE PLACE THE PERSONALIZED LABEL FROM YOUR PROSPECTUS IN THE ABOVE BOX.

Individual or company representative's signature: _____ Date: _____

Phone number : _____ Email (optional): _____

THE WINNING BIDDER MUST COMPLETE THE VERIFICATION OF WORKER'S DISABILITY COMPENSATION ACT COMPLIANCE (ON REVERSE SIDE IF DOUBLE SIDED) WITHIN 21 DAYS OF SALE AWARD DATE

Poison Pine (61-108-26)

T24N, R07W, SEC. 3; T25N, R07W, SEC. 27; T25N, R07W, SEC. 33; T25N, R07W,

In response to the notice of sale to be held 4:00 p.m. (local time) on May 7, 2026, I am hereby submitting my sealed bid (firm offer) for the following forest products to be cut. Bids for individual species must be at or above the advertised price. All non-responsive bid forms may be rejected.

<u>PRODUCTS & SPECIES</u>	<u>ESTIMATED VOLUME*</u>	<u>ADVERTISED PRICE</u>	<u>BID PRICE/UNIT</u>
Sawtimber			
Black/Red (Hybrid) Oak	10.4 MBF	\$ 101.00/MBF	\$ _____
Red Maple	25.2 MBF	\$ 100.00/MBF	\$ _____
Red Pine	56.5 MBF	\$ 137.00/MBF	\$ _____
White Pine	56.3 MBF	\$ 84.00/MBF	\$ _____
Pulpwood			
Balsam Fir	29 Cords	\$ 32.60/Cord	\$ _____
Black Spruce	21 Cords	\$ 8.35/Cord	\$ _____
Black/Red (Hybrid) Oak	22 Cords	\$ 30.55/Cord	\$ _____
Jack Pine	17 Cords	\$ 13.40/Cord	\$ _____
Paper Birch	8 Cords	\$ 33.45/Cord	\$ _____
Quaking Aspen	337 Cords	\$ 24.75/Cord	\$ _____
Red Maple	310 Cords	\$ 16.65/Cord	\$ _____
Red Pine	227 Cords	\$ 60.10/Cord	\$ _____
White Pine	295 Cords	\$ 27.30/Cord	\$ _____

*The volumes are statistically estimated within plus (+) or minus (-) 13.65 percent at 95% confidence level. These estimated volumes are final and not subject to adjustment. Prospective bidders are urged to examine this timber and to make their own estimates of quantity and quality.

I understand that any or all bids may be rejected. All bids must be signed and all bid items must be bid or the bid form may be rejected. I also understand that consideration and awarding a contract will be based upon my past performance and ability to complete the contract based upon equipment and staffing subject to my control.

FEDERAL ID: _____ - _____ or SOCIAL SECURITY NUMBER: _____ - _____ - _____

Company or individual bidding: _____

Company representative's name: _____

Address: _____

City: _____ State: _____ Zip: _____

IF AVAILABLE, PLEASE PLACE THE PERSONALIZED LABEL FROM YOUR PROSPECTUS IN THE ABOVE BOX.

Individual or company representative's signature: _____ Date: _____

Phone number : _____ Email (optional): _____

THE WINNING BIDDER MUST COMPLETE THE VERIFICATION OF WORKER'S DISABILITY COMPENSATION ACT COMPLIANCE (ON REVERSE SIDE IF DOUBLE SIDED) WITHIN 21 DAYS OF SALE AWARD DATE



FOR DEPARTMENT USE ONLY
Sale Number (XX – XXX – XX – XX)
Forest Management Unit:

TIMBER SALE VERIFICATION OF WORKER'S DISABILITY COMPENSATION ACT COMPLIANCE

*As required by Act 317, P.A. 1969 (Worker's Compensation) and
Part 5 of Act 451 of 1994, as amended.*

VERIFICATION OF WORKER'S DISABILITY COMPENSATION ACT COMPLIANCE

- This verification must be completed and submitted within 21 days of contract award and prior to the issuance of the timber sale contract.
- In addition, if boxes 2B or 2C are checked, then Notice of Exclusion or Certificate of Insurance must be submitted within twenty-one (21) days of the contract award and prior to the issuance of the timber sale contract.
- All information must be typed or printed except for written signatures.

Please Check Appropriate Categories:

1. My business is organized as (you **must** check one of the boxes below):
 - A. Sole Proprietorship (individual)
 - B. Partnership
 - C. Corporation

2. You **must** check one of the boxes below:
 - A. I certify my business is a sole proprietorship and it has no employees but the sole proprietor. I am not subject to the Worker's Compensation Laws.
 - B. I certify my business has satisfied its obligation to the Worker's Compensation Act through the use of an approved Notice of Exclusion (BWC-337, Rev. 5/96). I will provide a copy of the Notice of Exclusion within 21 days of the contract award. (For questions or a copy of the BWC-337, please call the Worker's Compensation Bureau at 517-322-1195).
 - C. I certify my business has a Worker's Compensation Policy. I will provide an original Certificate of Insurance within twenty-one (21) days of the contract award.

3. If you have checked item 2(A) or 2(B), you **must** indicate the number of **both** full-time and part-time employees, other than yourself, including family members and active partners (if none, you must enter "0").

_____ Full-time Employees

_____ Part-time Employees

Name of Business		Federal ID (or) Social Security No.	
Address		Telephone ()	
City	State	ZIP	

I hereby certify that the above information is true and correct. I agree to notify the Michigan DNR of any changes that occur in factors affecting my coverage during any of my present and future operations.

Signature of Owner or Authorized Representative

Title

Date

Please complete the "SEALED BID" information on the next page

Hilly Monster Mix (61-144-25)

T27N, R08W, SEC. 4; T27N, R08W, SEC. 5; T27N, R08W, SEC. 6; T28N, R08W,

In response to the notice of sale to be held 4:00 p.m. (local time) on May 7, 2026, I am hereby submitting my sealed bid (firm offer) for the following forest products to be cut. Bids for individual species must be at or above the advertised price. All non-responsive bid forms may be rejected.

<u>PRODUCTS & SPECIES</u>	<u>ESTIMATED VOLUME*</u>	<u>ADVERTISED PRICE</u>	<u>BID PRICE/UNIT</u>
Sawtimber			
B. T. Aspen	2.0 MBF	\$ 80.00/MBF	\$ _____
Red Maple	0.8 MBF	\$ 66.00/MBF	\$ _____
Red Oak	10.5 MBF	\$ 96.00/MBF	\$ _____
Red Pine	174.5 MBF	\$ 91.00/MBF	\$ _____
Sugar Maple	12.0 MBF	\$ 111.00/MBF	\$ _____
White Pine	4.7 MBF	\$ 56.00/MBF	\$ _____
Pulpwood			
Basswood	12 Cords	\$ 7.05/Cord	\$ _____
Black Locust	63 Cords	\$ 7.65/Cord	\$ _____
Mixed Aspen	804 Cords	\$ 16.50/Cord	\$ _____
Mixed Hardwood	95 Cords	\$ 11.10/Cord	\$ _____
Red Oak	73 Cords	\$ 20.35/Cord	\$ _____
Red Pine	279 Cords	\$ 40.05/Cord	\$ _____
White Pine	17 Cords	\$ 18.20/Cord	\$ _____

*The volumes are statistically estimated within plus (+) or minus (-) 16.55 percent at 95% confidence level. These estimated volumes are final and not subject to adjustment. Prospective bidders are urged to examine this timber and to make their own estimates of quantity and quality.

I understand that any or all bids may be rejected. All bids must be signed and all bid items must be bid or the bid form may be rejected. I also understand that consideration and awarding a contract will be based upon my past performance and ability to complete the contract based upon equipment and staffing subject to my control.

FEDERAL ID: _____ - _____ or SOCIAL SECURITY NUMBER: _____ - _____ - _____

Company or individual bidding: _____

Company representative's name: _____

Address: _____

City: _____ State: _____ Zip: _____

IF AVAILABLE, PLEASE PLACE THE PERSONALIZED LABEL FROM YOUR PROSPECTUS IN THE ABOVE BOX.

Individual or company representative's signature: _____ Date: _____

Phone number : _____ Email (optional): _____

THE WINNING BIDDER MUST COMPLETE THE VERIFICATION OF WORKER'S DISABILITY COMPENSATION ACT COMPLIANCE (ON REVERSE SIDE IF DOUBLE SIDED) WITHIN 21 DAYS OF SALE AWARD DATE



FOR DEPARTMENT USE ONLY	
Sale Number (XX - XXX - XX - XX)	
Forest Management Unit:	

TIMBER SALE VERIFICATION OF WORKER'S DISABILITY COMPENSATION ACT COMPLIANCE

As required by Act 317, P.A. 1969 (Worker's Compensation) and
Part 5 of Act 451 of 1994, as amended.

VERIFICATION OF WORKER'S DISABILITY COMPENSATION ACT COMPLIANCE

- This verification must be completed and submitted within 21 days of contract award and prior to the issuance of the timber sale contract.
- In addition, if boxes 2B or 2C are checked, then Notice of Exclusion or Certificate of Insurance must be submitted within twenty-one (21) days of the contract award and prior to the issuance of the timber sale contract.
- All information must be typed or printed except for written signatures.

Please Check Appropriate Categories:

1. My business is organized as (you **must** check one of the boxes below):
 - A. Sole Proprietorship (individual)
 - B. Partnership
 - C. Corporation
2. You **must** check one of the boxes below:
 - A. I certify my business is a sole proprietorship and it has no employees but the sole proprietor. I am not subject to the Worker's Compensation Laws.
 - B. I certify my business has satisfied its obligation to the Worker's Compensation Act through the use of an approved Notice of Exclusion (BWC-337, Rev. 5/96). I will provide a copy of the Notice of Exclusion within 21 days of the contract award. (For questions or a copy of the BWC-337, please call the Worker's Compensation Bureau at 517-322-1195).
 - C. I certify my business has a Worker's Compensation Policy. I will provide an original Certificate of Insurance within twenty-one (21) days of the contract award.
3. If you have checked item 2(A) or 2(B), you **must** indicate the number of **both** full-time and part-time employees, other than yourself, including family members and active partners (if none, you must enter "0").

_____ Full-time Employees

_____ Part-time Employees

Name of Business		Federal ID (or) Social Security No.	
Address		Telephone ()	
City	State	ZIP	

I hereby certify that the above information is true and correct. I agree to notify the Michigan DNR of any changes that occur in factors affecting my coverage during any of my present and future operations.

Signature of Owner or Authorized Representative

Title

Date

Please complete the "SEALED BID" information on the next page

Hazy Hearted Hardwood (61-145-25)
T27N, R08W, SEC. 4; T27N, R08W, SEC. 5; T28N, R08W, SEC. 33; Kalkaska

In response to the notice of sale to be held 4:00 p.m. (local time) on May 7, 2026, I am hereby submitting my sealed bid (firm offer) for the following forest products to be cut. Bids for individual species must be at or above the advertised price. All non-responsive bid forms may be rejected.

<u>PRODUCTS & SPECIES</u>	<u>ESTIMATED VOLUME*</u>	<u>ADVERTISED PRICE</u>	<u>BID PRICE/UNIT</u>
Sawtimber			
Basswood	23.7 MBF	\$ 59.00/MBF	\$ _____
Beech	3.3 MBF	\$ 95.00/MBF	\$ _____
Black Cherry	10.6 MBF	\$ 84.00/MBF	\$ _____
Red Oak	18.5 MBF	\$ 96.00/MBF	\$ _____
Sugar Maple	144.2 MBF	\$ 111.00/MBF	\$ _____
White Pine	12.2 MBF	\$ 56.00/MBF	\$ _____
Pulpwood			
B. T. Aspen	35 Cords	\$ 16.50/Cord	\$ _____
Basswood	45 Cords	\$ 7.05/Cord	\$ _____
Mixed Hardwood	559 Cords	\$ 11.10/Cord	\$ _____
Red Oak	30 Cords	\$ 20.35/Cord	\$ _____
Red Pine	310 Cords	\$ 40.05/Cord	\$ _____
White Pine	164 Cords	\$ 18.20/Cord	\$ _____

*The volumes are statistically estimated within plus (+) or minus (-) 20.24 percent at 95% confidence level. These estimated volumes are final and not subject to adjustment. Prospective bidders are urged to examine this timber and to make their own estimates of quantity and quality.

I understand that any or all bids may be rejected. All bids must be signed and all bid items must be bid or the bid form may be rejected. I also understand that consideration and awarding a contract will be based upon my past performance and ability to complete the contract based upon equipment and staffing subject to my control.

FEDERAL ID: ____ - ____ - ____ or SOCIAL SECURITY NUMBER: ____ - ____ - ____

Company or individual bidding: _____

Company representative's name: _____

Address: _____

City: _____ State: _____ Zip: _____

IF AVAILABLE, PLEASE PLACE THE PERSONALIZED LABEL FROM YOUR PROSPECTUS IN THE ABOVE BOX.

Individual or company representative's signature: _____ Date: _____

Phone number : _____ Email (optional): _____

THE WINNING BIDDER MUST COMPLETE THE VERIFICATION OF WORKER'S DISABILITY COMPENSATION ACT COMPLIANCE (ON REVERSE SIDE IF DOUBLE SIDED) WITHIN 21 DAYS OF SALE AWARD DATE

