



Compartment Review Presentation

Atlanta Forest Management Unit

Compartment 54063

Entry Year 2017

Acreage: 3,206

County Montmorency

Management Area: Kirtland's Warbler

Revision Date: 2015-09-17

Stand Examiner: Chad Fate

Legal Description:

T32N-R2E Sections 3, 4, 9, 10, 15, 22 & 27

Identified Planning Goals:

The main goal in this compartment is to manage for Kirtland's Warbler habitat and to conduct multiple resource management for the good of the citizens of the State of Michigan.

Soil and topography:

The compartment is predominately located on Sandy soils including Graycalm and Grayling types. The compartments topography is rolling hills with some steep ridges.

Ownership Patterns, Development, and Land Use in and Around the Compartment:

The compartment is surrounded predominately by state land with private land along the north west and two private 40 acre inholdings. Land use in the area comes from the recreational users (ORV, Snowmobile, hunting), and Antrim gas development. There is a director's order that restricts camping around Tomahawk Flooding. This is to encourage campers to use the camp grounds on the north end of the flooding and limit impacts to other areas of the flooding.

Unique Natural Features:

Some species present in area.

Archeological, Historical, and Cultural Features:

None known.

Special Management Designations or Considerations:

NA

Watershed and Fisheries Considerations:

There is a 100' buffer along Tomahawk Flooding and riparian areas where treatments are prescribed to encourage the natural recruitment of woody debris to the flooding/lake. The flooding currently has a healthy panfish, largemouth bass, and northern pike population and in-lake woody debris is an important cover type.

Wildlife Habitat Considerations:

The primary focus of wildlife habitat management will be to address the habitat requirements identified for the listed featured species found in this compartment. These species include kirtlands warbler, ruffed grouse, black bear, and white-tailed deer. Based on the selected featured species, some of the most significant wildlife management issues in the management area are the maintenance of young forest, the retention of large, over-mature trees and snags and the maintenance and expansion of hard mast and mesic conifer components.

Mineral Resource and Development Concerns and/or Restrictions

Surface sediments consist of coarse-textured glacial till and glacial outwash sand and gravel and postglacial alluvium. The glacial drift thickness varies between 200 and 400 feet. Beneath the glacial drift is the Devonian Antrim Shale and Traverse Formation. The Antrim is quarried for cement products and the Traverse for limestone. Gravel pits are located in Sections 10, 15, and 27 and potential is good. This area has had Antrim Shale development on the south end. The Antrim Shale is thinning and appears to be gone on the north end. Leasing is limited to the south (sections 22 and 27) with drilling advancing slowly to the north.

Vehicle Access:

The compartment is bordered by M-33 and easily accessed off of Millersburg Road and Clay Pit Road. The area has many two tracks that provide access to the entire area.

Survey Needs:

None known at this time.

Recreational Facilities and Opportunities:

There are many opportunities for hunting, wildlife viewing and mushrooming in the area. Tomahawk Flooding provides many good fishing opportunities. The ORV trail, snowmobile trail and the High Country Pathway run through the compartment.

Fire Protection:

This compartment is located in the protection area of the Atlanta DNR and the Hillman Fire Department. Hillman Fire department would most likely be last on scene of any fire in the area due to their distance from the area. The Atlanta DNR has mutual aid agreements with Hillman Fire Department and also supplies them with GSA 6x6 fire unit. The Tri-Township Fire Department would also respond due to mutual aid agreements with Hillman and their close proximity. Fires in this area have the potential to become very large. Historically the fires in this large Jack Pine area have been from debris burning and lightning.

Additional Compartment Information:

This area gets a large amount of illegal ORV activity on the power line and two tracks.

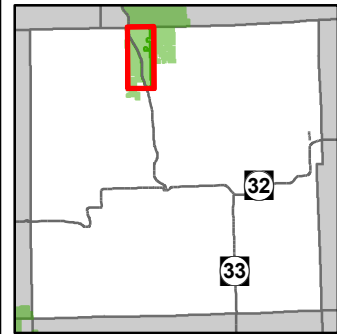
The following reports from the Inventory are attached:

- Total Acres by Cover Type and Age Class**
- Cover Type by Harvest Method**
- Proposed Treatments – No Limiting Factors**
- Proposed Treatments – With Limiting Factors**
- Stand Details (Forested and Nonforested)**
- Dedicated and Proposed Special Conservation Areas**
- Site Condition Details**

The following information is displayed, where pertinent, on the attached compartment maps:

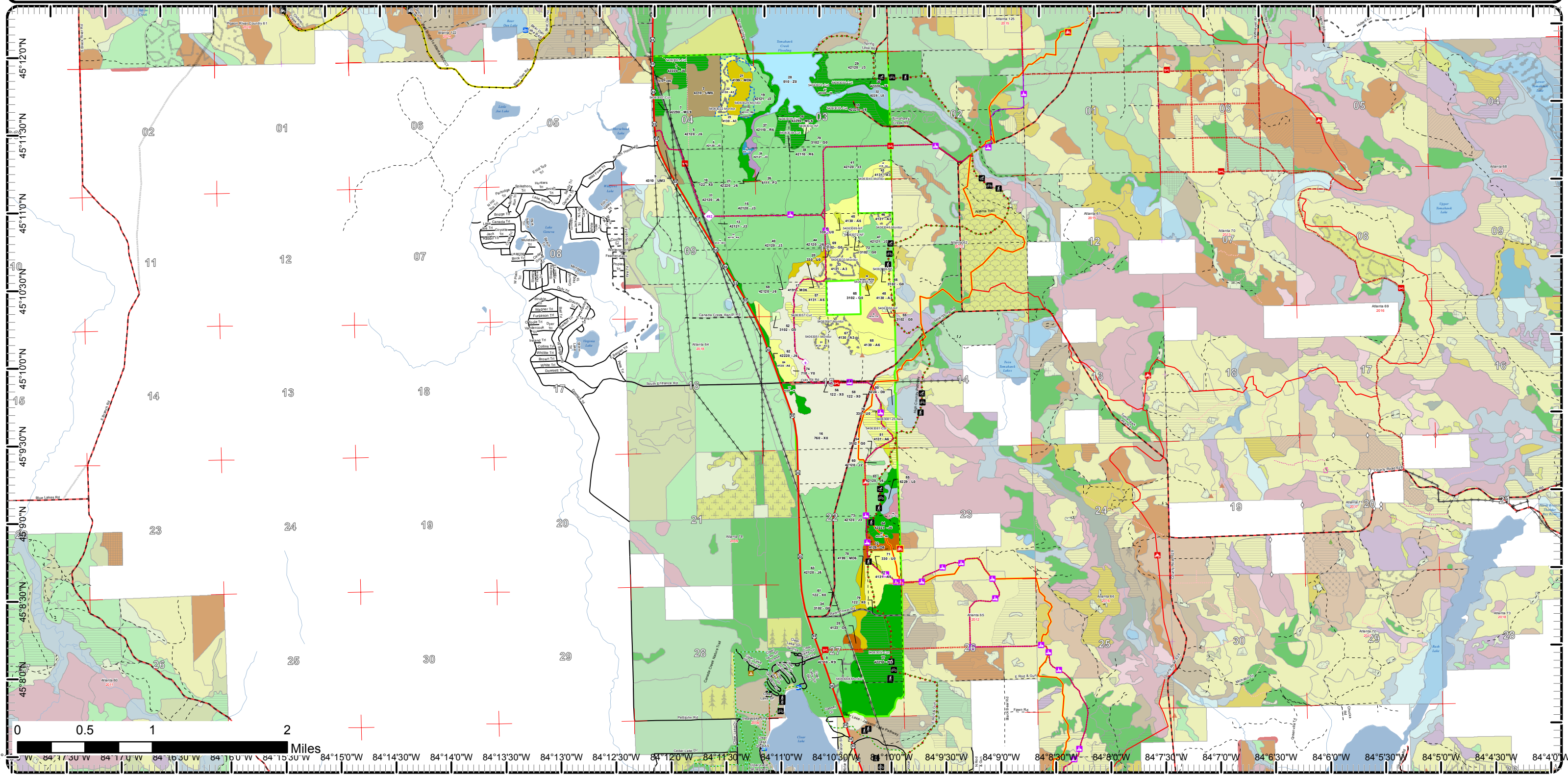
- Base feature information, stand boundaries, cover types, and numbers**
- Proposed treatments**
- Site condition boundaries**
- Details on the road access system**

Cover Type & Treatments Map

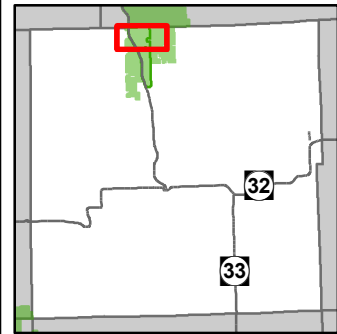


Compartment: 63
 T32N, 02E,
 Sec: 3, 4, 9, 10, 15, 16, 22, 27
 County: Montmorency
 Unit: Atlanta
 Mgmt Area: Kirtland's Warbler
 YOE: 2017
 Acres: 3206 GIS Calculated
 Examiner: Chad Fate
 Map Revised: 9/17/2015
 Map Phase: Post Review

- ✚ Remonumented Section Corners
- ◇ Field Grade GPS Corners
- Miris Corners
- Highway
- Paved Roads
- County Gravel Roads
- Gravel Roads
- Poor Dirt Roads
- Trail (Non-Recreation)
- Closed Roads
- ▲ Berms
- 🚤 Boating Access Site
- ▲ Campground
- 🌲 Tree (marking)
- 🚲 Bike Trails
- 🏍️ Motorcycle Trails (SOS License)
- 🚶 Hiking Trails
- 🛴 MCCCT Trails
- 🛵 ORV Trails
- 🚗 ORV Routes
- 🏂 Ski Trails
- 🛷 Snowmobile Trails
- Designated Hiking Pathways
- Designated Bicycle Trails
- Designated Equestrian Trails
- Designated Ski Trails
- ORV License
- Designated ATV
- Designated ORV Routes
- Designated Snowmobile Trails
- Designated MCCCT Trails
- Rivers
- Lakes
- Pipeline
- ⚡ Powerline
- Treatments with Site Conditions
- Clearcut (w/Reserves)
- Other Treatment - See Comments
- Regeneration Survey
- Forest Covertype
 - 412 - Oak Types
 - 413 - Aspen
 - 419 - Mixed Upland Deciduous
 - 421 - Planted Pines
 - 422 - Natural Pines
 - 430 - Upland Mixed Fores
 - 611 - Lowland Deciduous Forest
 - 612 - Lowland Coniferous Forest
- Non-Forest Covertype
 - 122 - Roads/Parking Lot
 - 310 - Herbaceous Openland
- 330 - Low Density Trees
- 500 - Water
- 622 - Lowland Shrub
- 629 - Mixed non-forested wetland
- 710 - Sand/Soil
- 790 - Other Bare/Sparsely Vegetated

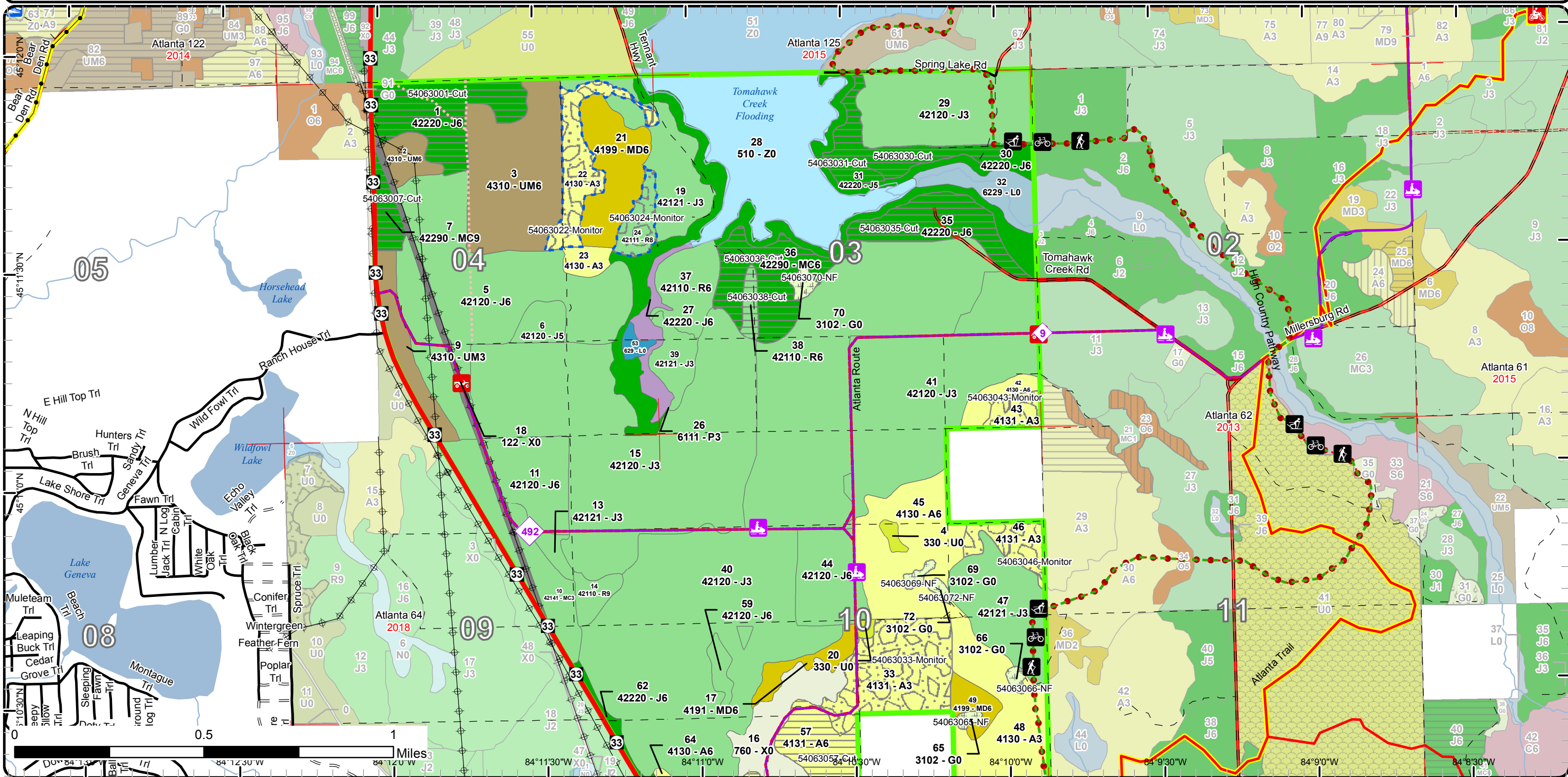


Cover Type & Treatments Map



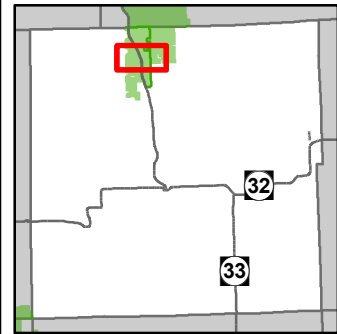
Compartment: 63
 T32N, 02E,
 Sec: 3, 4, 9, 10, 15, 16, 22, 27
 County: Montmorency
 Unit: Atlanta
 Mgmt Area: Kirtland's Warbler
 YOE: 2017
 Acres: 3206 GIS Calculated
 Examiner: Chad Fate
 Map Revised: 9/17/2015
 Map Phase: Post Review

- Miris Corners
- Highway
- Paved Roads
- County Gravel Roads
- Gravel Roads
- Poor Dirt Roads
- Closed Roads
- Boating Access Site
- Bike Trails
- Hiking Trails
- MCCCT Trails
- ORV Routes
- Ski Trails
- Snowmobile Trails
- Designated Hiking Pathways
- - - Designated Bicycle Trails
- - - Designated Equestrian Trails
- - - Designated Ski Trails
- - - ORV License
- - - Designated ATV
- - - Designated ORV Routes
- - - Designated Snowmobile Trails
- - - Designated MCCCT Trails
- Rivers
- Lakes
- Pipeline
- Powerline
- Treatments with Site Conditions
- Clearcut (w/Reserves)
- Other Treatment - See Comments
- Regeneration Survey
- Forest Covertype**
- 413 - Aspen
- 419 - Mixed Upland Deciduous
- 421 - Planted Pines
- 422 - Natural Pines
- 430 - Upland Mixed Fores
- 611 - Lowland Deciduous Forest
- Non-Forest Covertype**
- 122 - Roads/Parking Lot
- 310 - Herbaceous Openland
- 330 - Low Density Trees
- 500 - Water
- 622 - Lowland Shrub
- 629 - Mixed non-forested wetland
- 790 - Other Bare/Sparsely Vegetated

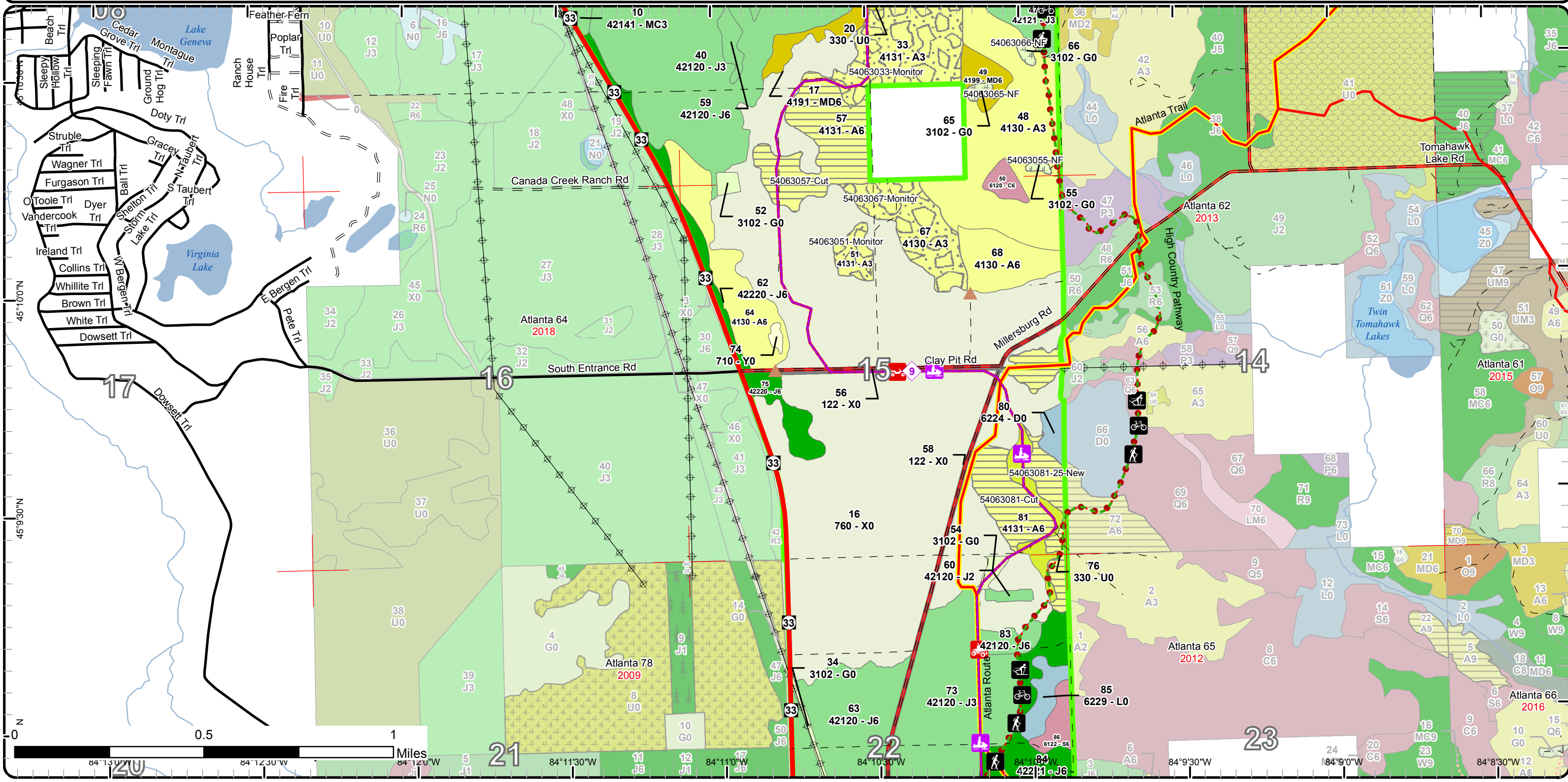


Cover Type & Treatments Map

Compartment: 63
 T32N, 02E,
 Sec: 3, 4, 9, 10, 15, 16, 22, 27
 County: Montmorency
 Unit: Atlanta
 Mgmt Area: Kirtland's Warbler
 YOE: 2017
 Acres: 3206 GIS Calculated
 Examiner: Chad Fate
 Map Revised: 9/17/2015
 Map Phase: Post Review

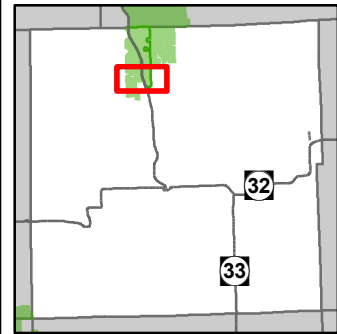


- Miris Corners
- = Highway
- = Paved Roads
- = County Gravel Roads
- = Gravel Roads
- - Poor Dirt Roads
- - - Closed Roads
- ▲ Berms
- 🚲 Bike Trails
- 🚶 Hiking Trails
- 🚲 ORV Trails
- 🚲 ORV Routes
- 🏠 Ski Trails
- 🚲 Snowmobile Trails
- - - Designated Hiking Pathways
- - - Designated Bicycle Trails
- Designated Equestrian Trails
- - - Designated Ski Trails
- = Designated ATV
- = Designated ORV Routes
- = Designated Snowmobile Trails
- = Designated MCCCT Trails
- = Rivers
- = Lakes
- ⚡ Powerline
- Clearcut (w/Reserves)
- Other Treatment - See Comments
- Regeneration Survey
- 413 - Aspen
- 419 - Mixed Upland Deciduous
- 421 - Planted Pines
- 422 - Natural Pines
- 612 - Lowland Coniferous Forest
- 122 - Roads/Parking Lot
- 310 - Herbaceous Openland
- 330 - Low Density Trees
- 622 - Lowland Shrub
- 710 - Sand/Soil
- 790 - Other Bare/Sparsely Vegetated

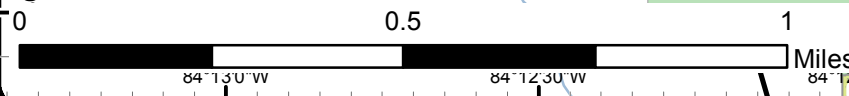
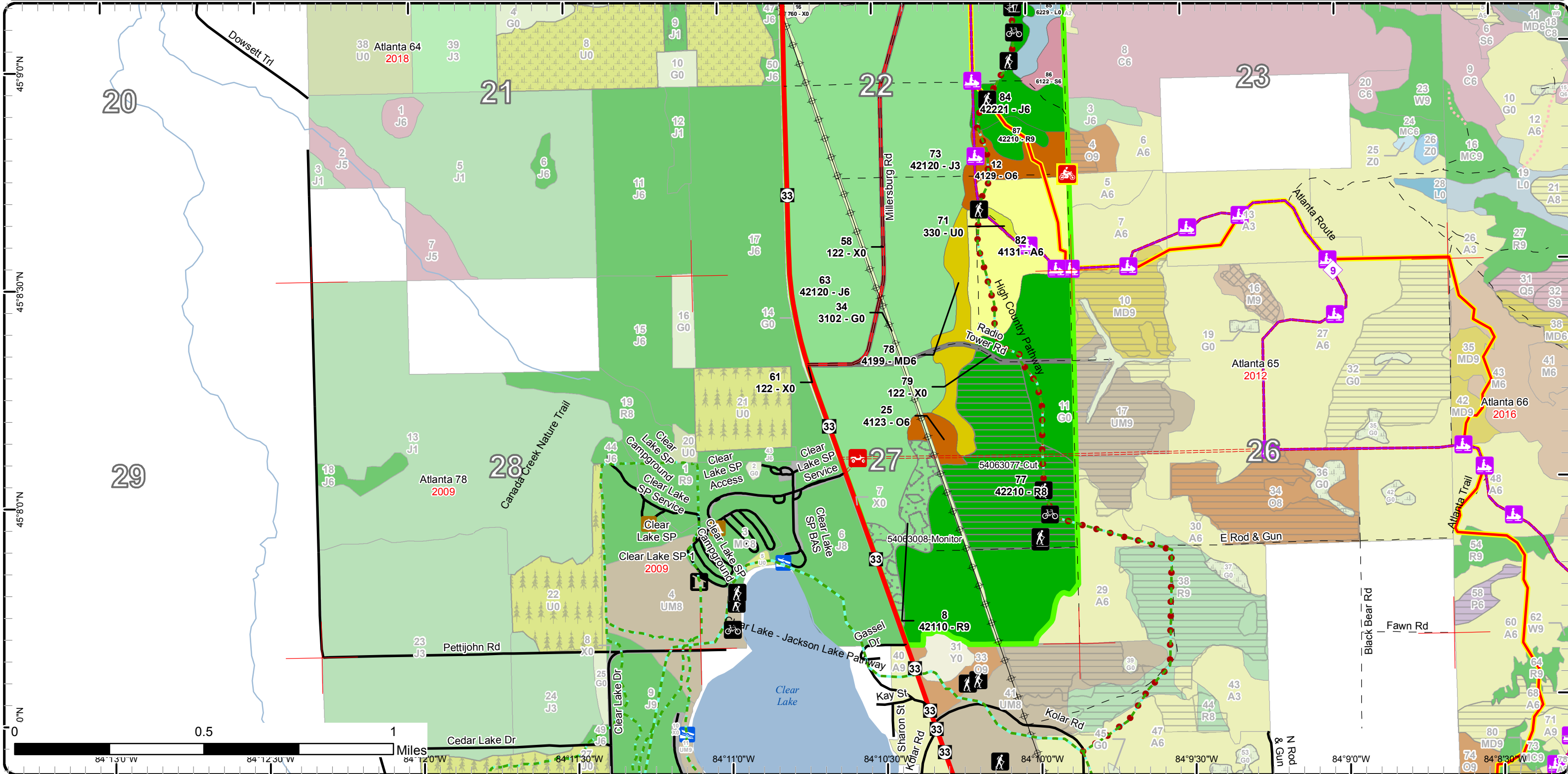


Cover Type & Treatments Map

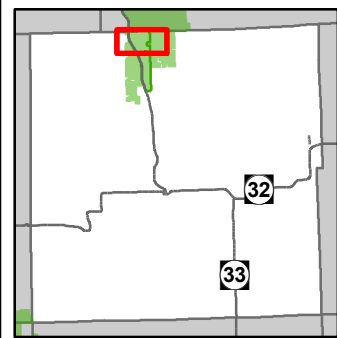
Compartment: 63
 T32N, 02E,
 Sec: 3, 4, 9, 10, 15, 16, 22, 27
 County: Montmorency
 Unit: Atlanta
 Mgmt Area: Kirtland's Warbler
 YOE: 2017
 Acres: 3206 GIS Calculated
 Examiner: Chad Fate
 Map Revised: 9/17/2015
 Map Phase: Post Review



- | | | | |
|--|--|--|--|
| <ul style="list-style-type: none"> Miris Corners Highway Paved Roads County Gravel Roads Poor Dirt Roads Closed Roads Boating Access Site Campground Bike Trails Hiking Trails MCCCT Trails ORV Routes | <ul style="list-style-type: none"> Ski Trails Snowmobile Trails Designated Hiking Pathways Designated Bicycle Trails Designated Equestrian Trails Designated Ski Trails Designated ATV Designated ORV Routes Designated Snowmobile Trails Designated MCCCT Trails Rivers Lakes Powerline | <p>Treatments</p> <ul style="list-style-type: none"> Clearcut (w/Reserves) Regeneration Survey <p>Forest Coverture</p> <ul style="list-style-type: none"> 412 - Oak Types 413 - Aspen 419 - Mixed Upland Deciduous 421 - Planted Pines 422 - Natural Pines 612 - Lowland Coniferous Forest <p>Non-Forest Coverture</p> <ul style="list-style-type: none"> 122 - Roads/Parking Lot 310 - Herbaceous Openland 330 - Low Density Trees | <ul style="list-style-type: none"> 622 - Lowland Shrub 790 - Other Bare/Sparsely Vegetated |
|--|--|--|--|

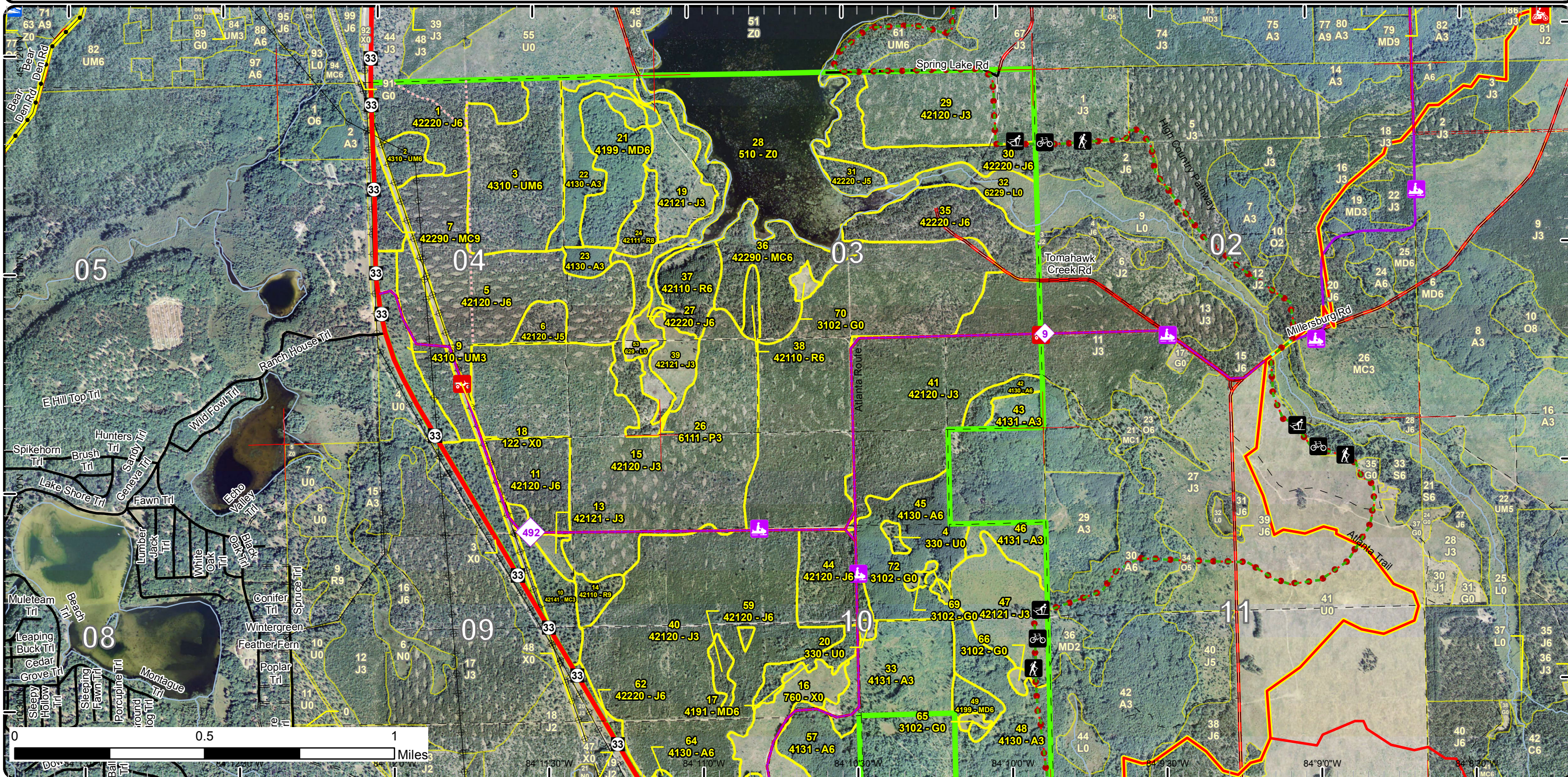


Stand Boundary Map

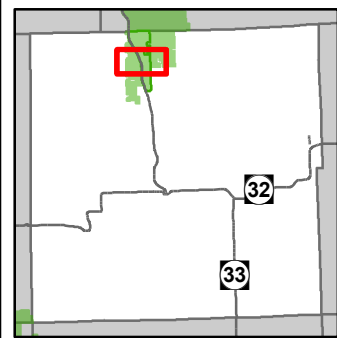


Compartment: 63
 T32N, 02E,
 Sec: 3, 4, 9, 10, 15, 16, 22, 27
 County: Montmorency
 Unit: Atlanta
 Mgmt Area: Kirtland's Warbler
 YOE: 2017
 Acres: 3206 GIS Calculated
 Examiner: Chad Fate
 Map Revised: 9/17/2015
 Map Phase: Post Review

- | | | | |
|--|---|---|---|
| <ul style="list-style-type: none"> Miris Corners Highway Paved Roads County Gravel Roads Gravel Roads Poor Dirt Roads Closed Roads Boating Access Site Bike Trails Hiking Trails MCCCT Trails ORV Routes | <ul style="list-style-type: none"> Ski Trails Snowmobile Trails Designated Hiking Pathways Designated Bicycle Trails Designated Equestrian Trails Designated Ski Trails ORV License Designated ATV Designated ORV Routes Designated Snowmobile Trails Designated MCCCT Trails Rivers Pipeline Powerline | <ul style="list-style-type: none"> Stand Boundaries <p>Forest Covertype</p> <ul style="list-style-type: none"> 413 - Aspen 419 - Mixed Upland Deciduous 421 - Planted Pines 422 - Natural Pines 430 - Upland Mixed Fores 611 - Lowland Deciduous Forest <p>Non-Forest Covertype</p> <ul style="list-style-type: none"> 122 - Roads/Parking Lot 310 - Herbaceous Openland 330 - Low Density Trees 500 - Water 622 - Lowland Shrub | <ul style="list-style-type: none"> 629 - Mixed non-forested wetland 790 - Other Bare/Sparsely Vegetated |
|--|---|---|---|

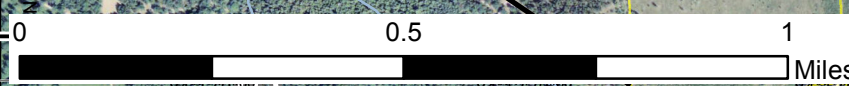
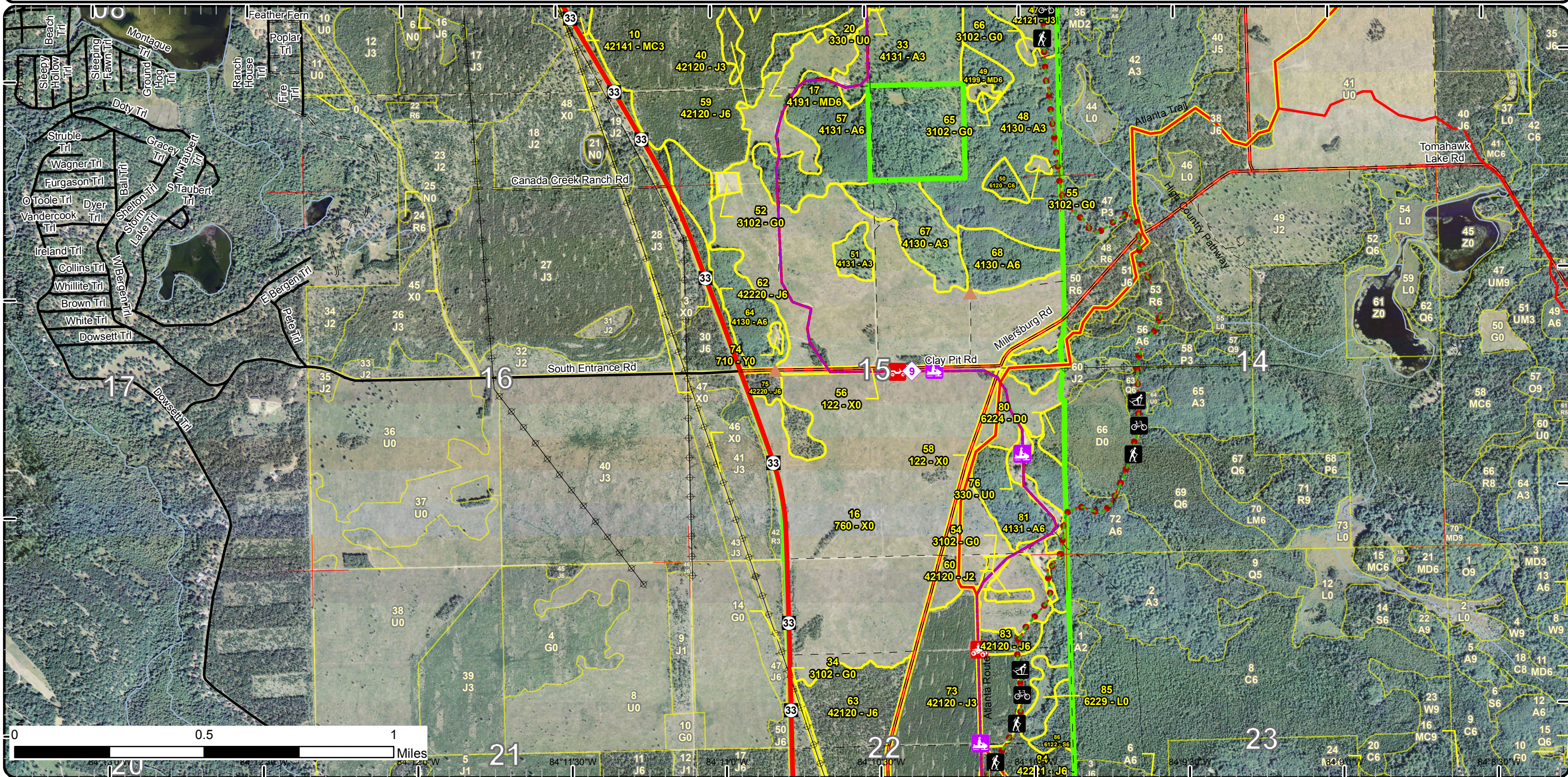


Stand Boundary Map



Compartment: 63
 T32N, 02E,
 Sec: 3, 4, 9, 10, 15, 16, 22, 27
 County: Montmorency
 Unit: Atlanta
 Mgmt Area: Kirtland's Warbler
 YOE: 2017
 Acres: 3206 GIS Calculated
 Examiner: Chad Fate
 Map Revised: 9/17/2015
 Map Phase: Post Review

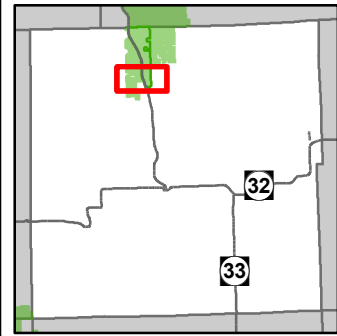
- | | | |
|--|---|--|
| <ul style="list-style-type: none"> Miris Corners Highway Paved Roads County Gravel Roads Gravel Roads Poor Dirt Roads Closed Roads Berms Bike Trails Hiking Trails ORV Trails ORV Routes | <ul style="list-style-type: none"> Ski Trails Snowmobile Trails Designated Hiking Pathways Designated Bicycle Trails Designated Equestrian Trails Designated Ski Trails Designated ATV Designated ORV Routes Designated Snowmobile Trails Designated MCCCT Trails Rivers Powerline Stand Boundaries | <p>Forest Covertypes</p> <ul style="list-style-type: none"> 413 - Aspen 419 - Mixed Upland Deciduous 421 - Planted Pines 422 - Natural Pines 612 - Lowland Coniferous Forest <p>Non-Forest Covertypes</p> <ul style="list-style-type: none"> 122 - Roads/Parking Lot 310 - Herbaceous Openland 330 - Low Density Trees 622 - Lowland Shrub 710 - Sand/Soil 790 - Other Bare/Sparingly Vegetated |
|--|---|--|



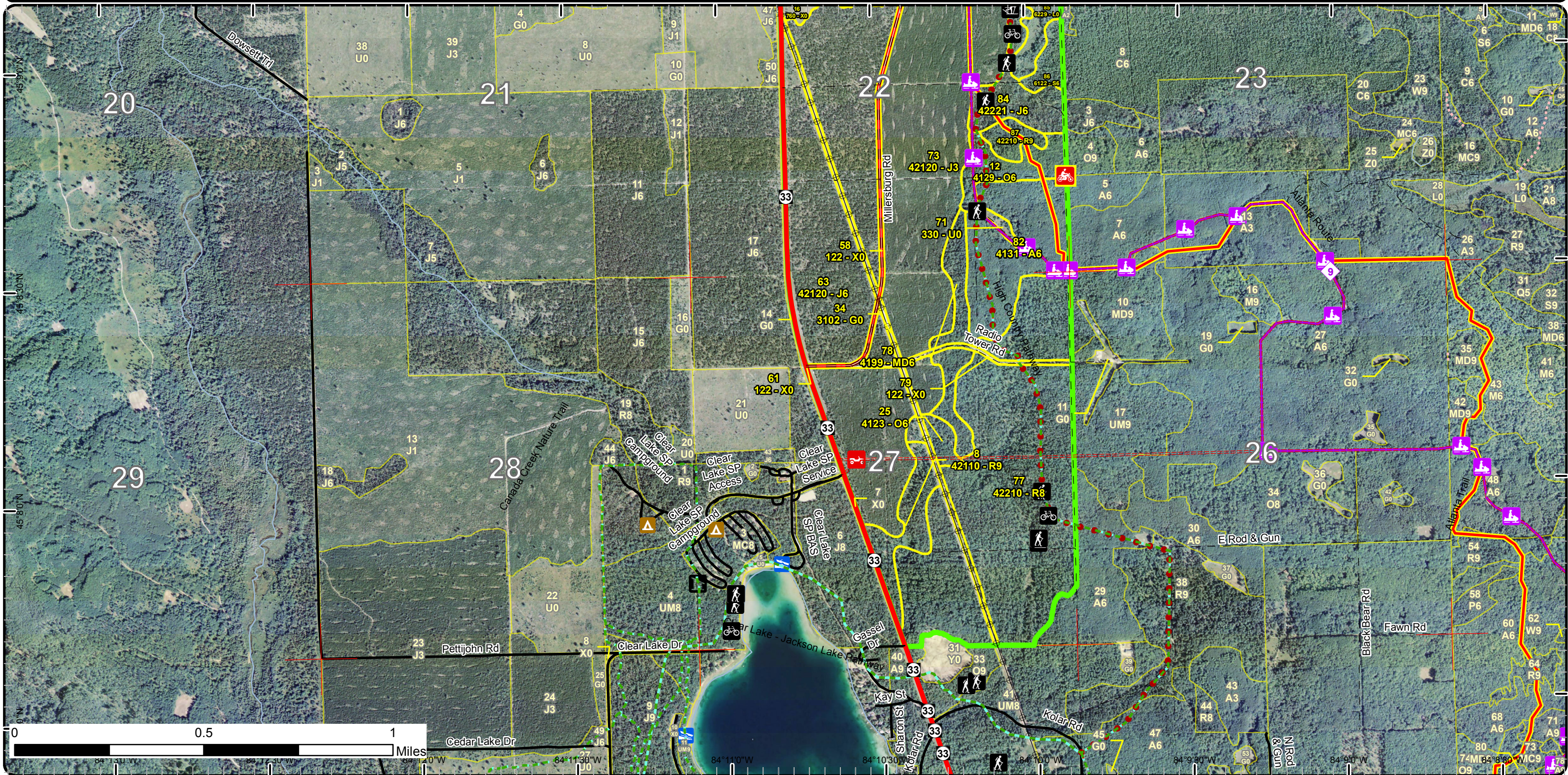
0 0.5 1 Miles
 20 21 22 23
 84°11'30"W 84°11'00"W 84°10'30"W 84°9'30"W

Stand Boundary Map

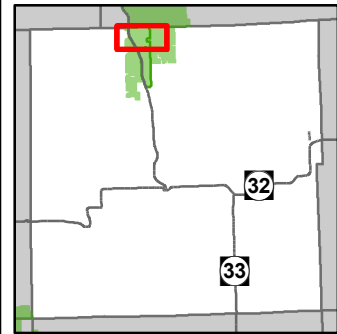
Compartment: 63
 T32N, 02E,
 Sec: 3, 4, 9, 10, 15, 16, 22, 27
 County: Montmorency
 Unit: Atlanta
 Mgmt Area: Kirtland's Warbler
 YOE: 2017
 Acres: 3206 GIS Calculated
 Examiner: Chad Fate
 Map Revised: 9/17/2015
 Map Phase: Post Review



- | | | |
|--|---|---|
| <ul style="list-style-type: none"> Miris Corners Highway Paved Roads County Gravel Roads Poor Dirt Roads Closed Roads Boating Access Site Campground Bike Trails Hiking Trails MCCCT Trails ORV Routes | <ul style="list-style-type: none"> Ski Trails Snowmobile Trails Designated Hiking Pathways Designated Bicycle Trails Designated Equestrian Trails Designated Ski Trails Designated ATV Designated ORV Routes Designated Snowmobile Trails Designated MCCCT Trails Rivers Powerline Stand Boundaries | <p>Forest Covertypes</p> <ul style="list-style-type: none"> 412 - Oak Types 413 - Aspen 419 - Mixed Upland Deciduous 421 - Planted Pines 422 - Natural Pines 612 - Lowland Coniferous Forest <p>Non-Forest Covertypes</p> <ul style="list-style-type: none"> 122 - Roads/Parking Lot 310 - Herbaceous Openland 330 - Low Density Trees 622 - Lowland Shrub 790 - Other Bare/Sparsely Vegetated |
|--|---|---|

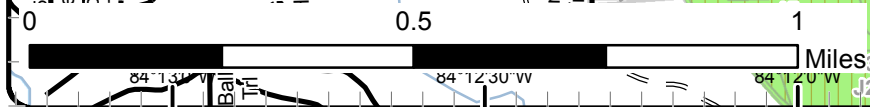
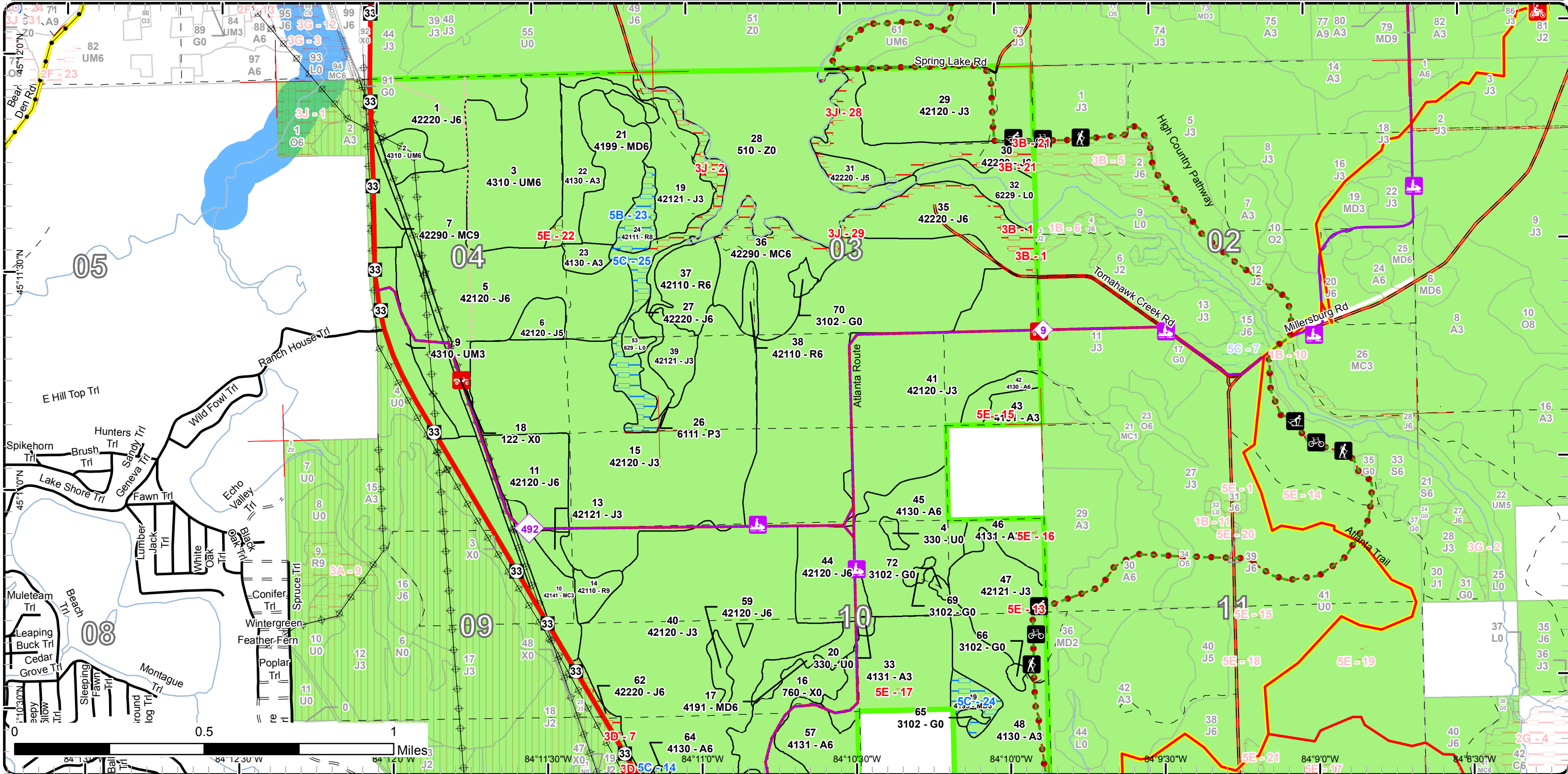


Cover Type & Treatments Map



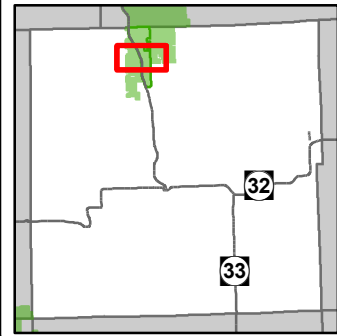
Compartment: 63
 T32N, 02E,
 Sec: 3, 4, 9, 10, 15, 16, 22, 27
 County: Montmorency
 Unit: Atlanta
 Mgmt Area: Kirtland's Warbler
 YOE: 2017
 Acres: 3206 GIS Calculated
 Examiner: Chad Fate
 Map Revised: 9/17/2015
 Map Phase: Post Review

<ul style="list-style-type: none"> Miris Corners Highway Paved Roads County Gravel Roads Gravel Roads Poor Dirt Roads Closed Roads Boating Access Site Bike Trails Hiking Trails MCCCT Trails ORV Routes 	<ul style="list-style-type: none"> Ski Trails Snowmobile Trails Designated Hiking Pathways Designated Bicycle Trails Designated Equestrian Trails Designated Ski Trails ORV License Designated ATV Designated ORV Routes Designated Snowmobile Trails Designated MCCCT Trails Rivers Pipeline Powerline 	<ul style="list-style-type: none"> Stand Boundaries Site Condition Available w/ Constraints Unavailable <p>Available Factors W/ Constraints</p> <ul style="list-style-type: none"> 5B: Maintain for regeneration purposes 5C: Delay treatment for age/size class diversity or exceptional site quality <p>Unavailable Factors</p> <ul style="list-style-type: none"> 3B: Threatened, endangered, and special concern species/communities 3D: Recreational / Scenic values 3J: Water quality / BMPs (stream, river, or lake) 	<ul style="list-style-type: none"> 5E: Long-Term Retention Special Conservation Areas Kirtland Warbler Habitat Cold Water Streams High Priority Trout Stream Buffer
--	---	---	---

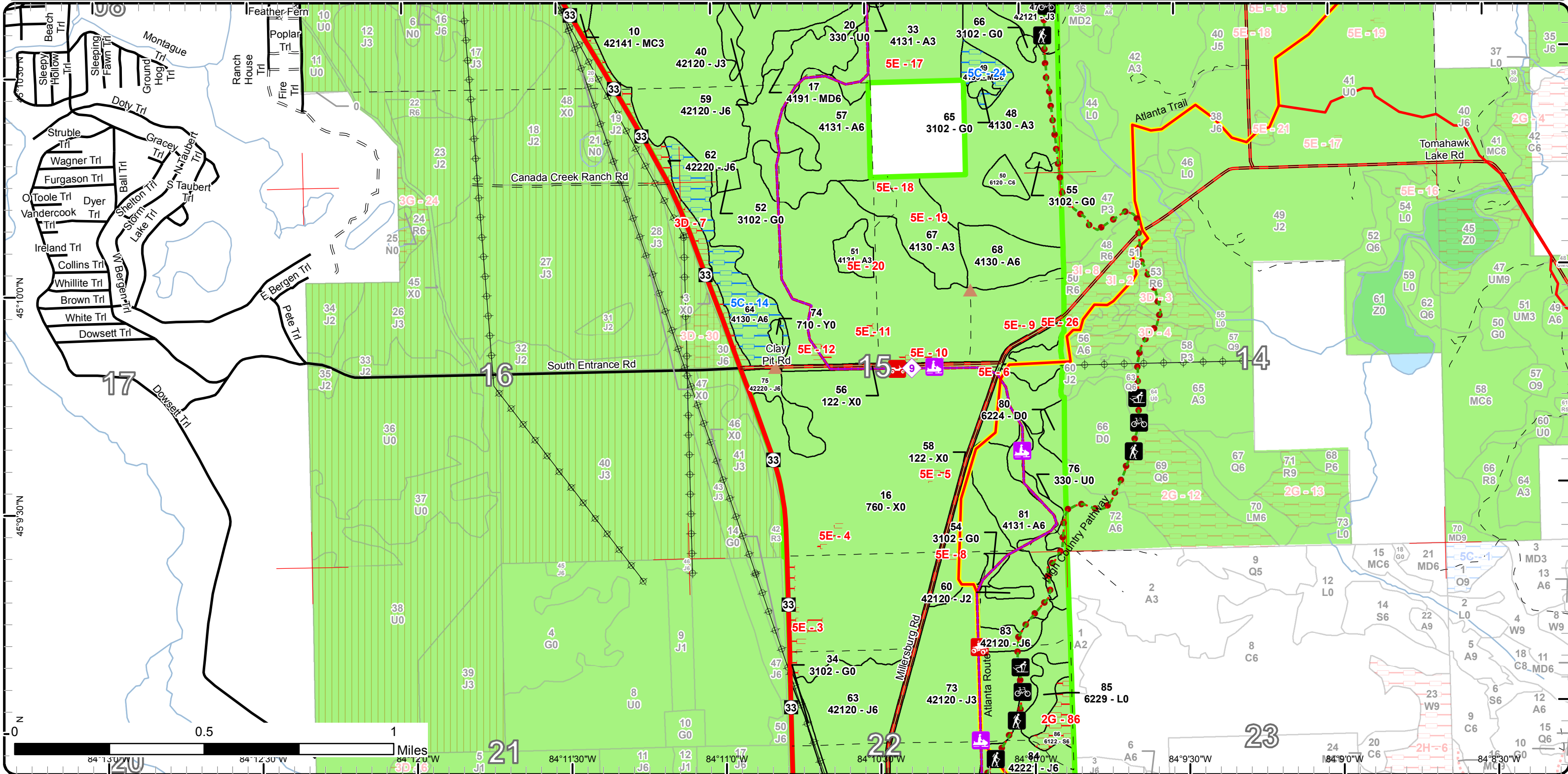


Cover Type & Treatments Map

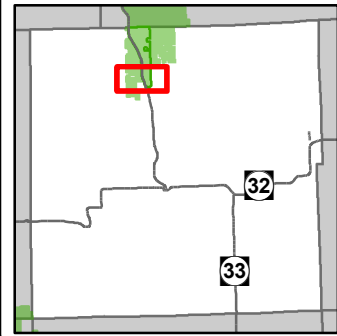
Compartment: 63
 T32N, 02E,
 Sec: 3, 4, 9, 10, 15, 16, 22, 27
 County: Montmorency
 Unit: Atlanta
 Mgmt Area: Kirtland's Warbler
 YOE: 2017
 Acres: 3206 GIS Calculated
 Examiner: Chad Fate
 Map Revised: 9/17/2015
 Map Phase: Post Review



- Miris Corners
 - Highway
 - Paved Roads
 - County Gravel Roads
 - = Gravel Roads
 - - Poor Dirt Roads
 - - - - Closed Roads
 - ▲ Berms
 - 🚲 Bike Trails
 - 🚶 Hiking Trails
 - 🚲 ORV Trails
 - 🚲 ORV Routes
 - 🏔️ Ski Trails
 - 🚲 Snowmobile Trails
 - Designated Hiking Pathways
 - - Designated Bicycle Trails
 - Designated Equestrian Trails
 - Designated Ski Trails
 - Designated ATV
 - - - - Designated ORV Routes
 - Designated Snowmobile Trails
 - Designated MCCCT Trails
 - Rivers
 - ⚡ Powerline
 - Stand Boundaries
 - Site Condition
 - Available w/ Constraints
 - - Unavailable
 - Cold Water Lakes
- Available Factors W/ Constraints**
- 5C: Delay treatment for age/size class diversity or exceptional site quality
- Unavailable Factors**
- 2G: Too wet (sensitive soils, does not include access issues)
 - 3D: Recreational / Scenic values
 - 5E: Long-Term Retention
 - Special Conservation Areas
 - Kirtland Warbler Habitat
 - Cold Water Streams

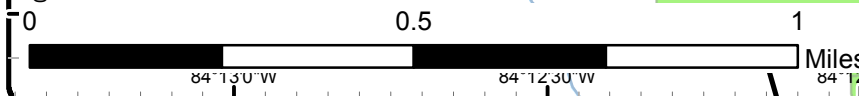
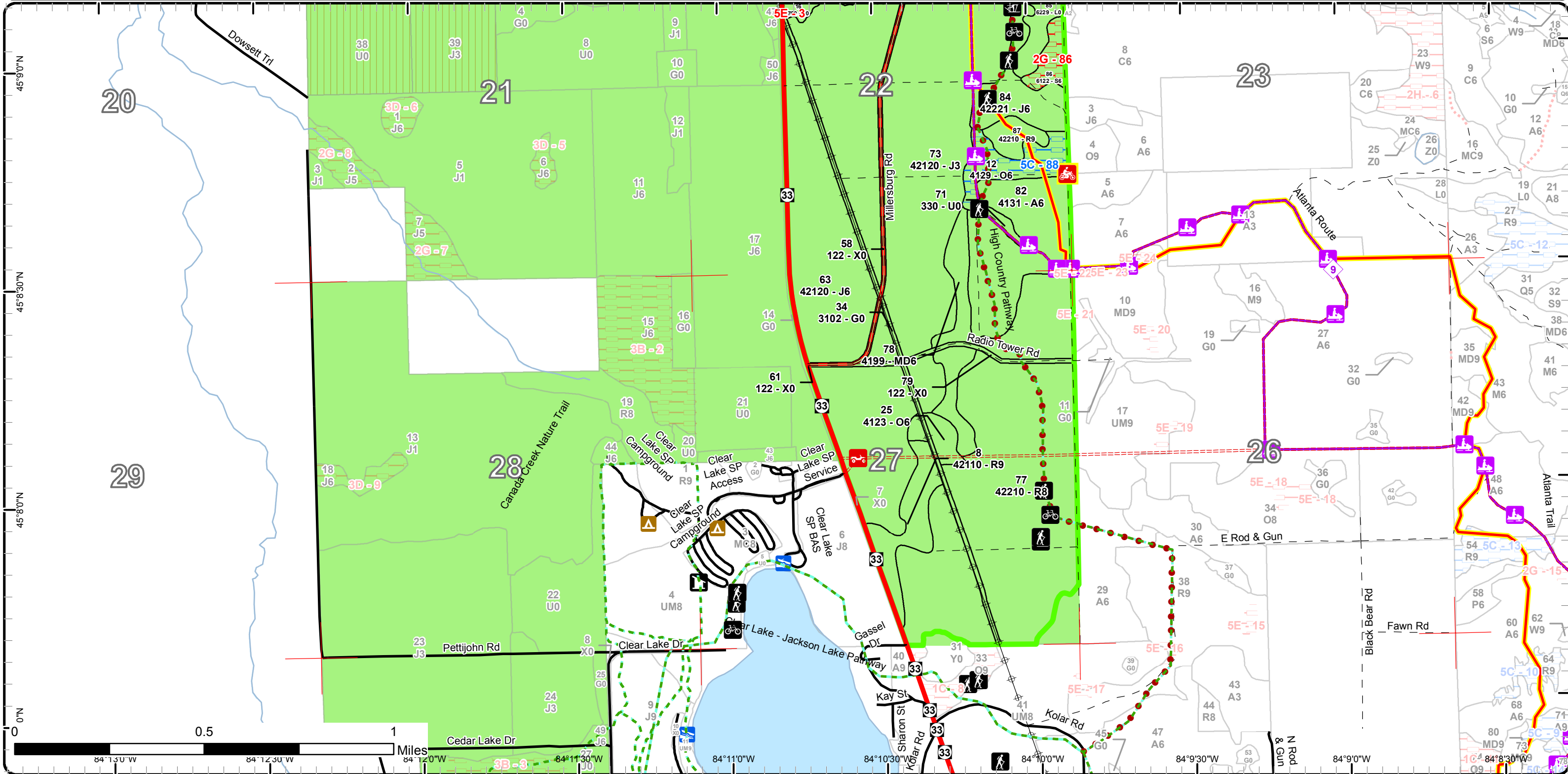


Cover Type & Treatments Map



Compartment: 63
 T32N, 02E,
 Sec: 3, 4, 9, 10, 15, 16, 22, 27
 County: Montmorency
 Unit: Atlanta
 Mgmt Area: Kirtland's Warbler
 YOE: 2017
 Acres: 3206 GIS Calculated
 Examiner: Chad Fate
 Map Revised: 9/17/2015
 Map Phase: Post Review

- | | | |
|--|---|--|
| <ul style="list-style-type: none"> Miris Corners Highway Paved Roads County Gravel Roads Poor Dirt Roads Closed Roads Boating Access Site Campground Bike Trails Hiking Trails MCCCT Trails ORV Routes | <ul style="list-style-type: none"> Ski Trails Snowmobile Trails Designated Hiking Pathways Designated Bicycle Trails Designated Equestrian Trails Designated Ski Trails Designated ATV Designated ORV Routes Designated Snowmobile Trails Designated MCCCT Trails Rivers Powerline Stand Boundaries | <p>Site Condition</p> <ul style="list-style-type: none"> Available w/ Constraints Unavailable <p>Available Factors W/ Constraints</p> <ul style="list-style-type: none"> 5C: Delay treatment for age/size class diversity or exceptional site quality <p>Unavailable Factors</p> <ul style="list-style-type: none"> 2G: Too wet (sensitive soils, does not include access issues) 5E: Long-Term Retention <p>Special Conservation Areas</p> <ul style="list-style-type: none"> Kirtland Warbler Habitat Cold Water Streams Cold Water Lakes |
|--|---|--|



Report 1 – Total Acres by Cover Type and Age Class



Age Class

	Non-Forest	0-9	10-19	20-29	30-39	40-49	50-59	60-69	70-79	80-89	90-99	100-109	110-119	120-129	130-139	140-149	150+	Uneven-Aged	Total
Aspen	0	124	0	81	84	53	0	40	74	0	0	0	0	0	0	0	0	0	456
Bare/Sparsely Vegetated	464	0	0	0	0	0	0	0	0	0	0	0	0	0	0	0	0	0	464
Cedar	0	0	0	0	0	0	0	0	0	0	5	0	0	0	0	0	0	0	5
Herbaceous Openland	28	0	0	0	0	0	0	0	0	0	0	0	0	0	0	0	0	0	28
Jack Pine	0	87	57	395	652	164	37	111	14	0	0	0	0	0	0	0	0	0	1517
Low-Density Trees	17	0	0	0	0	0	0	0	0	0	0	0	0	0	0	0	0	0	17
Lowland Aspen/Balsam Poplar	0	0	0	0	11	0	0	0	0	0	0	0	0	0	0	0	0	0	11
Lowland Shrub	28	0	0	0	0	0	0	0	0	0	0	0	0	0	0	0	0	0	28
Lowland Spruce/Fir	0	0	0	0	0	0	0	0	0	8	0	0	0	0	0	0	0	0	8
Mixed Upland Deciduous	0	0	0	0	40	0	0	21	0	8	0	0	0	0	0	0	0	0	69
Natural Mixed Pines	0	0	0	0	0	0	0	40	9	0	0	0	0	0	0	0	0	0	49
Oak	0	0	0	0	0	7	0	0	0	18	0	0	0	0	0	0	0	0	25
Planted Mixed Pines	0	0	31	0	0	0	0	0	0	0	0	0	0	0	0	0	0	0	31
Red Pine	0	0	0	0	0	0	32	213	7	10	0	0	0	0	0	0	0	0	262
Sand, Soil	1	0	0	0	0	0	0	0	0	0	0	0	0	0	0	0	0	0	1
Treed Bog	5	0	0	0	0	0	0	0	0	0	0	0	0	0	0	0	0	0	5
Upland Mixed Forest	0	18	0	0	0	63	9	0	0	0	0	0	0	0	0	0	0	0	90
Urban	40	0	0	0	0	0	0	0	0	0	0	0	0	0	0	0	0	0	40
Water	100	0	0	0	0	0	0	0	0	0	0	0	0	0	0	0	0	0	100
Total	683	229	88	476	787	287	78	425	104	10	39	0	0	0	0	0	0	0	3206



Report 2 – Treatment Summary

Atlanta Mgt. Unit

Compartment 63

Year of Entry: 2017

Acres of Harvest

Total Compartment Acres: 3,206

Commercial Harvest - 297
 Harvests with Site Condition - 0
 Next Step Harvest - 0
 Habitat Cut - 0

Cover Type by Harvest Method

	Clearcut	Selection	Patch Clearcut	Seed Tree	Shelterwood	Thinning	Overstory Removal	Salvage	Other	Total Acres
Aspen	82	0	0	0	0	0	0	0	0	82
Jack Pine	90	0	0	0	0	0	0	0	0	90
Natural Mixed Pines	41	0	0	0	0	0	0	0	0	41
Red Pine	84	0	0	0	0	0	0	0	0	84
Total	297	0	0	0	0	0	0	0	0	297

Proposed and Next Step Treatments by Method

	Harvest	Site Prep	Planting	Seeding	Burning	Pesticide	Monitoring	Other	Non-Forest Mgt.	Total Acres
Current	297	0	0	0	0	153	0	11		461
Next Step	0	294	215	0	0	79	512	0	0	1100
Total	297	294	215	0	0	79	665	0	11	1561



S t a n d	Treatment Name	Acres	Stand CoverType	Size Density	Stand Age	BA Range	Treatment Type	Treatment Method	Cover Type Objective	Age Structure	Approval Status
1	54063001-Cut	37.8	42220 - Natural Jack Pine	Poletimber Well	62	Unspec ified	Harvest	Clearcut with Retention	42120 - Planted Jack Pine	Even-Aged	Approved Proposal

Habitat Cut: No**Site Condition:**

Prescription clearcut, follow retention guidelines. use 2" spec. Chip tops, not necessary to leave 1/6-1/3 of the tops, this is a jack pine stand and does not need the extra nutrients. Use KW specs. Use trail specs as necessary for hauling routes.

Next Step SitePrep, Trenching; Planting, Initial Plant; Monitoring, Artificial Regen(1yr); Monitoring, Artificial Regen(3yr)
Treatments:

Acceptable Fully stocked stand of jack pine. Expect oak stump sprouts.

Regen:

Other Old next step comments:

Comment:

Proposed Start Date: 10/1 /2016

7	54063007-Cut	9.1	42290 - Natural Mixed Pine	Sawtimber Well	74	81-110	Harvest	Clearcut with Retention	42110 - Planted Red Pine	Even-Aged	Approved Proposal
---	--------------	-----	-------------------------------	-------------------	----	--------	---------	----------------------------	-----------------------------	-----------	----------------------

Habitat Cut: No**Site Condition:**

Prescription clearcut, use 2" spec, chip tops for replanting. Plant Red Pine. Use KW specs. May need trail specs, depending on hauling routes.

Specs:

Next Step SitePrep, Trenching; Planting, Initial Plant; Monitoring, Artificial Regen(1yr); Monitoring, Artificial Regen(3yr)

Treatments:

Acceptable fully stocked stand red pine with a mix of oak and jack pine

Regen:

Other Old next step comments:

Comment:

Proposed Start Date: 10/1 /2016

8	54063008-Monitor	20.3	42110 - Planted Red Pine	Sawtimber Well	67	81-110	Monitoring	Natural Regen (Re-Inventory)	4221 - Natural Red Pine	Two-Aged	Draft Field Boundary
---	------------------	------	-----------------------------	-------------------	----	--------	------------	---------------------------------	----------------------------	----------	-------------------------

Habitat Cut: No**Site Condition:**

Prescription Check regen during 2017 inventory year (YOE 2015)

Specs:

Next Step

Treatments:

Acceptable Red pine with oak

Regen:

Other Timber sale #54-038-07-01 cut in 2010

Comment: Shelterwood Old next step comments:

Proposed Start Date: 10/1 /2014

22	54063022-Monitor	22.4	4130 - Aspen	Sapling Well	7	Immature	Monitoring	Natural Regen (Re-Inventory)	413 - Aspen	Even-Aged	Draft Field Boundary
----	------------------	------	--------------	-----------------	---	----------	------------	---------------------------------	-------------	-----------	-------------------------

Habitat Cut: No**Site Condition: Long-Term Retention**

Prescription check regen during 2015 inventory YOE17.

Specs:

Next Step

Treatments:

Acceptable Fully stocked stand of aspen

Regen:

Other Old next step comments:

Comment:

Proposed Start Date: 10/1 /2014



S t a n d	Treatment Name	Acres	Stand CoverType	Size Density	Stand Age	BA Range	Treatment Type	Treatment Method	Cover Type Objective	Age Structure	Approval Status
24	54063024-Monitor	9.5	42111 - Planted Red Pine, Mixed Deciduous	Sawtimber Medium	82	51-80	Monitoring	Natural Regen (Re-Inventory)	4122 - Oak, Pine	Even-Aged	Draft Field Boundary

Habitat Cut: No**Site Condition: Shelterwood/Seed Source**

Prescription Check regen during inventory 2015 for YOE17.

Specs:

Next Step

Treatments:

Acceptable Mix of red/jack pine and oak

Regen:

Other Old next step comments:

Comment:

Proposed Start Date: 10/1 /2014

30	54063030-Cut	19.9	42220 - Natural Jack Pine	Poletimber Well	67	Unspecified	Harvest	Clearcut with Retention	4212 - Planted Jack Pine	Even-Aged	Approved Proposal
----	--------------	------	---------------------------	-----------------	----	-------------	---------	-------------------------	--------------------------	-----------	-------------------

Habitat Cut: No**Site Condition:**

Prescription clearcut. retention is left in a buffer along the flooding and L0 type. use 2"spec and chip tops. replant to jack pine. Use KW specs. Use trail specs.

Specs:

Next Step SitePrep, Trenching; Planting, Initial Plant; Monitoring, Artificial Regen(1yr); Monitoring, Artificial Regen(3yr)

Treatments:

Acceptable fully stocked stand of jack pine. expect some oak regeneration

Regen:

Other Possible eagle nest/activity in the area, check database before setting up the sale. Old next step comments:

Comment:

Proposed Start Date: 10/1 /2016

31	54063031-Cut	4.8	42220 - Natural Jack Pine	Poletimber Medium	59	Unspecified	Harvest	Clearcut with Retention	4212 - Planted Jack Pine	Even-Aged	Approved Proposal
----	--------------	-----	---------------------------	-------------------	----	-------------	---------	-------------------------	--------------------------	-----------	-------------------

Habitat Cut: No**Site Condition:**

Prescription clearcut, retention is already excluded in a buffer along the flooding. use 2" spec. chip tops. replant to jack pine. Use KW specs. Use trail specs

Specs: for hauling.

Next Step SitePrep, Trenching; Planting, Initial Plant; Monitoring, Artificial Regen(1yr); Monitoring, Artificial Regen(3yr)

Treatments:

Acceptable medium to fully stocked stand of jack pine with a mix of oak.

Regen:

Other Possible eagle nest/activity in the area, check database before setting up the sale. Old next step comments:

Comment:

Proposed Start Date: 10/1 /2016

33	54063033-Monitor	45.0	4131 - Aspen, Oak	Sapling Well	7	Immature	Monitoring	Natural Regen (Re-Inventory)	413 - Aspen	Even-Aged	Draft Field Boundary
----	------------------	------	-------------------	--------------	---	----------	------------	------------------------------	-------------	-----------	----------------------

Habitat Cut: No**Site Condition:**

Prescription check regen in 2015 inventory YOE17

Specs:

Next Step

Treatments:

Acceptable Aspen with mix of oak, red maple, and pine

Regen:

Other Old next step comments:

Comment:

Proposed Start Date: 10/1 /2014



S t a n d	Treatment Name	Acres	Stand CoverType	Size Density	Stand Age	BA Range	Treatment Type	Treatment Method	Cover Type Objective	Age Structure	Approval Status
35	54063035-Cut	27.6	42220 - Natural Jack Pine	Poletimber Well	66	Unspec ified	Harvest	Clearcut with Retention	4212 - Planted Jack Pine	Even-Aged	Approved Proposal

Habitat Cut: No**Site Condition:**

Prescription clearcut. retention is already excluded from the treatment in a buffer along the flooding and the L0 type. use 2" spec and chip tops. replant to jack pine. Use KW specs. Use trail specs for hauling.

Next Step SitePrep, Trenching; Planting, Initial Plant; Monitoring, Artificial Regen(1yr); Monitoring, Artificial Regen(3yr)
Treatments:

Acceptable fully stocked stand of jack pine with a mix of oak
Regen:

Other Old next step comments:
Comment:

Proposed Start Date: 10/1 /2016

36	54063036-Cut	32.2	42290 - Natural Mixed Pine	Poletimber Well	67	51-80	Harvest	Clearcut with Retention	42110 - Planted Red Pine	Even-Aged	Approved Proposal
----	--------------	------	-------------------------------	--------------------	----	-------	---------	----------------------------	-----------------------------	-----------	----------------------

Habitat Cut: No**Site Condition:**

Prescription clearcut. retention is already excluded from the treatment in a buffer along the flooding. use 2" spec and chip tops. replant red pine. Use KW specs. Use trail specs for hauling.

Next Step SitePrep, Trenching; Planting, Initial Plant; Monitoring, Artificial Regen(1yr); Monitoring, Artificial Regen(3yr)
Treatments:

Acceptable fully stocked red pine stand with a mix of jack pine and oak
Regen:

Other Possible Osprey nest/activity in the area, check database before setting up the sale. Old next step comments:
Comment:

Proposed Start Date: 10/1 /2016

38	54063038-Cut	4.5	42110 - Planted Red Pine	Poletimber Well	59	111- 140	Harvest	Clearcut	42110 - Planted Red Pine	Even-Aged	Approved Proposal
----	--------------	-----	-----------------------------	--------------------	----	-------------	---------	----------	-----------------------------	-----------	----------------------

Habitat Cut: No**Site Condition:**

Prescription clearcut, no retention due to small stand size and adequate retention of similar stand 36 along the flooding. also, retention on the slopes would prevent follow up trenching operations. use 2" spec and chip tops. plant red pine along with stand 36. Use KW specs. Use trail specs for hauling.

Next Step SitePrep, Trenching; Planting, Initial Plant; Monitoring, Artificial Regen(1yr); Monitoring, Artificial Regen(3yr)
Treatments:

Acceptable fully stocked red pine stand with and small component of jack pine, and mixed deciduous.
Regen:

Other Possible Osprey nest/activity in the area, check database before setting up the sale. Old next step comments:
Comment:

Proposed Start Date: 10/1 /2016

43	54063043-Monitor	7.8	4131 - Aspen, Oak	Sapling Well	6	Immatu re	Monitoring	Natural Regen (Re-Inventory)	413 - Aspen	Even-Aged	Draft Field Boundary
----	------------------	-----	-------------------	-----------------	---	--------------	------------	---------------------------------	-------------	-----------	-------------------------

Habitat Cut: No**Site Condition:**

Prescription check regen during next inventory 2015 YO E17
Specs:

Next Step
Treatments:

Acceptable Aspen with mix of oak, red maple, and pine.
Regen:

Other Old next step comments:
Comment:

Proposed Start Date: 10/1 /2014



S t a n d	Treatment Name	Acres	Stand CoverType	Size Density	Stand Age	BA Range	Treatment Type	Treatment Method	Cover Type Objective	Age Structure	Approval Status
46	54063046-Monitor	12.9	4131 - Aspen, Oak	Sapling Well	6	Immature	Monitoring	Natural Regen (Re-Inventory)	413 - Aspen	Even-Aged	Draft Field Boundary

Habitat Cut: No**Site Condition:**

Prescription check regen in 2015 inventory YOY17

Specs:

Next Step

Treatments:

Acceptable Aspen with a mix of red maple, oak.

Regen:

Other Old next step comments:

Comment:

Proposed Start Date: 10/1 /2014

51	54063051-Monitor	7.1	4131 - Aspen, Oak	Sapling Well	6	Immature	Monitoring	Natural Regen (Re-Inventory)	413 - Aspen	Even-Aged	Draft Field Boundary
----	------------------	-----	-------------------	-----------------	---	----------	------------	---------------------------------	-------------	-----------	-------------------------

Habitat Cut: No**Site Condition:**

Prescription check regen during inventory 2015 YOY17.

Specs:

Next Step

Treatments:

Acceptable Aspen with mix of oak, red maple, and pine

Regen:

Other Old next step comments:

Comment:

Proposed Start Date: 10/1 /2014

55	54063055-NF	1.3	3102 - Grass	Nonstocked		Unspecified	NonForestMgt	Other - Specify	310 - Herbaceous Openland		Proposal
----	-------------	-----	--------------	------------	--	-------------	--------------	-----------------	---------------------------------	--	----------

Habitat Cut: No**Site Condition:**

Prescription Plant to food and cover crops for wildlife or maintain grasses using mechanical methods or fire as funding allows.

Specs:

Next Step

Treatments:

Acceptable

Regen:

Other Old next step comments:

Comment:

Proposed Start Date: 5 /1 /2015

57	54063057-Cut	39.8	4131 - Aspen, Oak	Poletimber Well	66	Unspecified	Harvest	Clearcut with Retention	413 - Aspen	Even-Aged	Approved Proposal
----	--------------	------	-------------------	--------------------	----	-------------	---------	----------------------------	-------------	-----------	----------------------

Habitat Cut: No**Site Condition:**

Prescription Clearcut, cut all trees 2" dbh and larger. leave 3% retention in one pocket. Use grouse drumming log specs. Delay Start date for green up

Specs: guidelines. Use trail specs.

Next Step

Treatments:

Acceptable Fully stocked stand of aspen with a mix of red oak, red maple, and mixed pine present.

Regen:

Other Old next step comments:

Comment:

Proposed Start Date: 10/1 /2021



S t a n d	Treatment Name	Acres	Stand CoverType	Size Density	Stand Age	BA Range	Treatment Type	Treatment Method	Cover Type Objective	Age Structure	Approval Status
65	54063065-NF	1.6	3102 - Grass	Nonstocked		Unspec ified	NonForestMgt	Other - Specify	310 - Herbaceous Openland		Proposal

Habitat Cut: No**Site Condition:**

Prescription Plant to food and cover crops for wildlife or maintain grasses using mechanical methods or fire as funding allows.

Specs:

Next Step

Treatments:

Acceptable

Regen:

Other Old next step comments:

Comment:

Proposed Start Date: 5 /1 /2015

66	54063066-NF	1.7	3102 - Grass	Nonstocked		Unspec ified	NonForestMgt	Other - Specify	310 - Herbaceous Openland		Proposal
----	-------------	-----	--------------	------------	--	-----------------	--------------	-----------------	---------------------------------	--	----------

Habitat Cut: No**Site Condition:**

Prescription Plant to food and cover crops for wildlife or maintain grasses using mechanical methods or fire as funding allows.

Specs:

Next Step

Treatments:

Acceptable

Regen:

Other Old next step comments:

Comment:

Proposed Start Date: 5 /1 /2015

67	54063067- Monitor	28.3	4130 - Aspen	Sapling Well	6	Immatur re	Monitoring	Natural Regen (Re-Inventory)	413 - Aspen	Even-Aged	Draft Field Boundary
----	----------------------	------	--------------	-----------------	---	---------------	------------	---------------------------------	-------------	-----------	-------------------------

Habitat Cut: No**Site Condition:**

Prescription check regen during inventory 2015 YO E17.

Specs:

Next Step

Treatments:

Acceptable aspen with mix of oak and red maple.

Regen:

Other Old next step comments:

Comment:

Proposed Start Date: 10/1 /2014

69	54063069-NF	1.9	3102 - Grass	Nonstocked		Unspec ified	NonForestMgt	Other - Specify	310 - Herbaceous Openland		Proposal
----	-------------	-----	--------------	------------	--	-----------------	--------------	-----------------	---------------------------------	--	----------

Habitat Cut: No**Site Condition:**

Prescription Plant to food and cover crops for wildlife or maintain grasses using mechanical methods or fire as funding allows.

Specs:

Next Step

Treatments:

Acceptable

Regen:

Other Old next step comments:

Comment:

Proposed Start Date: 5 /1 /2015



S t a n d	Treatment Name	Acres	Stand CoverType	Size Density	Stand Age	BA Range	Treatment Type	Treatment Method	Cover Type Objective	Age Structure	Approval Status
70	54063070-NF	2.7	3102 - Grass	Nonstocked		Unspec ified	NonForestMgt	Other - Specify	310 - Herbaceous Openland		Proposal

Habitat Cut: No**Site Condition:**

Prescription Plant to food and cover crops for wildlife or maintain grasses using mechanical methods or fire as funding allows.

Specs:

Next Step

Treatments:

Acceptable

Regen:

Other Old next step comments:

Comment:

Proposed Start Date: 5 /1 /2015

72	54063072-NF	1.4	3102 - Grass	Nonstocked		Unspec ified	NonForestMgt	Other - Specify	310 - Herbaceous Openland		Proposal
----	-------------	-----	--------------	------------	--	-----------------	--------------	-----------------	---------------------------------	--	----------

Habitat Cut: No**Site Condition:**

Prescription Plant to food and cover crops for wildlife or maintain grasses using mechanical methods or fire as funding allows.

Specs:

Next Step

Treatments:

Acceptable

Regen:

Other Old next step comments:

Comment:

Proposed Start Date: 5 /1 /2015

77	54063077-Cut	79.1	42210 - Natural Red Pine	Sawtimber Medium	67	51-80	Harvest	Clearcut with Retention	4211 - Planted Red Pine	Even-Aged	Approved Proposal
----	--------------	------	-----------------------------	---------------------	----	-------	---------	----------------------------	----------------------------	-----------	----------------------

Habitat Cut: No**Site Condition:**

Prescription clearcut, cut all trees 2" dbh and larger, chip tops, low stumps, replant to red pine. Use Trail specs.

Specs:

Next Step

SitePrep, Roller Chopping; SitePrep, Trenching; Planting, Initial Plant; Monitoring, Artificial Regen(1yr); Pesticide, Aerial

Treatments:

Acceptable Fully stocked stand of red pine with small component of red maple and red oak

Regen:

Other Old next step comments:

Comment:

Proposed Start Date: 10/1 /2016

81	54063081-25- New	8.2	4131 - Aspen, Oak	Poletimber Well	79	Unspec ified	Harvest	Clearcut with Retention	413 - Aspen	Even-Aged	Approved Proposal
----	---------------------	-----	-------------------	--------------------	----	-----------------	---------	----------------------------	-------------	-----------	----------------------

Habitat Cut: No**Site Condition:**

Prescription Clearcut, cut all trees 2" dbh and larger. Move start date up for 2015 YOY to cut with stand 72 in compartment 062. Use grouse drumming log

Specs: specs. Use trail specs.

Next Step

Treatments:

Acceptable Fully stocked stand of aspen with a mix of oak, maple, and pine may be present

Regen:

Other Old next step comments:

Comment:

Proposed Start Date: 9 /1 /2015



Stand a n d	Treatment Name	Acres	Stand CoverType	Size Density	Stand Age	BA Range	Treatment Type	Treatment Method	Cover Type Objective	Age Structure	Approval Status
81	54063081-Cut	33.8	4131 - Aspen, Oak	Poletimber Well	79	Unspec ified	Harvest	Clearcut with Retention	413 - Aspen	Even-Aged	Approved Proposal

Habitat Cut: No**Site Condition:**

Prescription Clearcut, cut all trees 2" dbh and larger. Dlay western portions of the stand 5 years for green up issues with adjacent stands. Use grouse
Specs: drumming log specs. Use trail specs.

Next Step
Treatments:

Acceptable Fully stocked stand of aspen with a mix of oak, maple, and pine may be present
Regen:

Other Old next step comments:

Comment:

Proposed Start Date: 10/1 /2021

**Total Treatment
 Acreage Proposed: 460.8**

Report 5 – Site Conditions

Atlanta Mgt. Unit
Chad Fate : Examiner

Compartment: 63
Year of Entry: 2017

Availability for Management

Total Acres	Acres Available	Acres Avail		Dominant Site Conditions	Dominant Site Conditions								
		With Condition	Not Available		5B	5C	2G	3B	3D	3J	5E		
456	420	32	4	Aspen		32							4
464	446	0	17	Bare/Sparsely Vegetated									17
5	5	0	0	Cedar									
28	28	0	0	Herbaceous Openland									
1518	1446	16	56	Jack Pine		16		11	14	30			1
17	17	0	0	Low-Density Trees		0							
11	11	0	0	Lowland Aspen/Balsam Poplar									
28	28	0	0	Lowland Shrub		0							
8	0	0	8	Lowland Spruce/Fir			8						
69	61	8	0	Mixed Upland Deciduous		8							
49	42	0	7	Natural Mixed Pines							7		
25	7	18	0	Oak		18							
31	31	0	0	Planted Mixed Pines									
262	252	10	0	Red Pine	10								
1	1	0	0	Sand, Soil									
5	5	0	0	Treed Bog									
90	90	0	0	Upland Mixed Forest									
40	40	0	0	Urban									
100	100	0	0	Water									
3,206	3,031	84	91	Total Forested Acres	10	74	8	11	14	37			22
	95%	3%	3%	Relative Percent									

**Due to limitations in the current Site Conditions Analysis tool, all nonforested acres are considered available. Future development will enable analysis of nonforested types.*

Site No.	Dominant Site Cond Availability	Dominant Site Condition	Acres	Other Site Condition	Other Site Condition	Other Site Condition	Other Site Condition
1	Unavailable	3B: Threatened, endangered, and special concern species/communities	7	Unspecified	Unspecified	Unspecified	Unspecified
Comments:							

Report 5 – Site Conditions

Atlanta Mgt. Unit
Chad Fate : Examiner

Compartment: 63
Year of Entry: 2017

2	Unavailable	3J: Water quality / BMPs (stream, river, or lake)	14	5E: Long-Term Retention	Unspecified	Unspecified	Unspecified
Comments:							
3	Unavailable	5E: Long-Term Retention	7	Unspecified	Unspecified	Unspecified	Unspecified
Comments:							
4	Unavailable	5E: Long-Term Retention	1	Unspecified	Unspecified	Unspecified	Unspecified
Comments:							
5	Unavailable	5E: Long-Term Retention	2	Unspecified	Unspecified	Unspecified	Unspecified
Comments:							
6	Unavailable	5E: Long-Term Retention	1	Unspecified	Unspecified	Unspecified	Unspecified
Comments:							
7	Unavailable	3D: Recreational / Scenic values	14	Unspecified	Unspecified	Unspecified	Unspecified
Comments:							
8	Unavailable	5E: Long-Term Retention	1	Unspecified	Unspecified	Unspecified	Unspecified
Comments:							
9	Unavailable	5E: Long-Term Retention	0	Unspecified	Unspecified	Unspecified	Unspecified
Comments:							

Report 5 – Site Conditions

Atlanta Mgt. Unit
Chad Fate : Examiner

Compartment: 63
Year of Entry: 2017

10	Unavailable	5E: Long-Term Retention	2	Unspecified	Unspecified	Unspecified	Unspecified
Comments:							
11	Unavailable	5E: Long-Term Retention	1	Unspecified	Unspecified	Unspecified	Unspecified
Comments:							
12	Unavailable	5E: Long-Term Retention	2	Unspecified	Unspecified	Unspecified	Unspecified
Comments:							
13	Unavailable	5E: Long-Term Retention	1	Unspecified	Unspecified	Unspecified	Unspecified
Comments:							
14	Available	5C: Delay treatment for age/size class diversity or exceptional site quality	32	Unspecified	Unspecified	Unspecified	Unspecified
Comments:							
15	Unavailable	5E: Long-Term Retention	0	Unspecified	Unspecified	Unspecified	Unspecified
Comments:							
16	Unavailable	5E: Long-Term Retention	1	Unspecified	Unspecified	Unspecified	Unspecified
Comments:							
17	Unavailable	5E: Long-Term Retention	1	Unspecified	Unspecified	Unspecified	Unspecified
Comments:							

Report 5 – Site Conditions

Atlanta Mgt. Unit
Chad Fate : Examiner

Compartment: 63
Year of Entry: 2017

18	Unavailable	5E: Long-Term Retention	0	Unspecified	Unspecified	Unspecified	Unspecified
Comments:							
19	Unavailable	5E: Long-Term Retention	0	Unspecified	Unspecified	Unspecified	Unspecified
Comments:							
20	Unavailable	5E: Long-Term Retention	0	Unspecified	Unspecified	Unspecified	Unspecified
Comments:							
21	Unavailable	3B: Threatened, endangered, and special concern species/communities	4	Unspecified	Unspecified	Unspecified	Unspecified
Comments:							
22	Unavailable	5E: Long-Term Retention	2	Unspecified	Unspecified	Unspecified	Unspecified
Comments:							
23	Available	5B: Maintain for regeneration purposes	10	5C: Delay treatment for age/size class diversity or exceptional site quality	Unspecified	Unspecified	Unspecified
Comments:							

Report 5 – Site Conditions

Atlanta Mgt. Unit
Chad Fate : Examiner

Compartment: 63
Year of Entry: 2017

24	Available	5C: Delay treatment for age/size class diversity or exceptional site quality	8	5B: Maintain for regeneration purposes	Unspecified	Unspecified	Unspecified
Comments:							
25	Available	5C: Delay treatment for age/size class diversity or exceptional site quality	16	Unspecified	Unspecified	Unspecified	Unspecified
Comments:							
26	Unavailable	5E: Long-Term Retention	0	Unspecified	Unspecified	Unspecified	Unspecified
Comments:							
28	Unavailable	3J: Water quality / BMPs (stream, river, or lake)	11	5E: Long-Term Retention	3D: Recreational / Scenic values	Unspecified	Unspecified
Comments:							
29	Unavailable	3J: Water quality / BMPs (stream, river, or lake)	12	5E: Long-Term Retention	3D: Recreational / Scenic values	Unspecified	Unspecified
Comments:							
86	Unavailable	2G: Too wet (sensitive soils, does not include access issues)	8	Unspecified	Unspecified	Unspecified	Unspecified
Comments:							

Report 5 – Site Conditions

Atlanta Mgt. Unit
Chad Fate : Examiner

Compartment: 63
Year of Entry: 2017

88	Available	5C: Delay treatment for age/size class diversity or exceptional site quality	18	Unspecified	Unspecified	Unspecified	Unspecified
Comments:							

Mgt. Unit

Compartment: #Type!

Year of Entry:



Report 6 – PROPOSED SPECIAL CONSERVATION AREA* (SCA) DETAILS

* This is a partial list of SCAs for this compartment. Not included are those areas identified under other Department initiatives (Natural Rivers, Deer Wintering Areas, etc.). Those will be identified in separate, future map and report products.

SCA Name	SCA Category	Detail Type	Recommendation	Acres
Comments				

**Report 7 – EXISTING SPECIAL CONSERVATION AREA DETAILS**

* This is a list of SCA's for this compartment along with a 1/4 mile buffer surrounding the compartment. Refer to the Special Conservation Area Map for locations of the below listed Conservation Areas.

ERA = Ecological Reference Area
 HCVA = High Conservation Value Area
 SCA = Special Conservation Area

Conservation Area	Type	Description
SCA	Cold Water Lake	A coldwater lake has temperature and dissolved oxygen conditions that allow naturally-reproduced or stocked trout populations and those of other coldwater fish species to persist from year to year. Suitable conditions for coldwater fishes may occur in Michigan lakes if they are relatively deep, have substantial groundwater inflows, or are located in colder (northern) areas of the state. Such lakes are established by Director's action and designated as trout resources by Fisheries Order 200.
SCA	Cold Water Stream	A coldwater stream has temperature and dissolved oxygen conditions that allow naturally-reproduced or stocked trout populations and those of other coldwater fish species (e.g., slimy sculpin) to persist from year to year. Coldwater streams in Michigan typically provide these conditions due to substantial contributions of groundwater to their stream flows. Such streams are established by Director's action and designated as trout resources by Fisheries Order 210.
SCA	Riparian Area	A transitional area between aquatic and terrestrial ecosystems in which the terrestrial ecosystem influences the aquatic ecosystem and vice-versa. Because of the unique conditions adjacent to lakes, streams and open water wetlands, riparian areas harbor a high diversity of plants and wildlife. Riparian communities are ecologically and socially significant in their effects on water quality and quantity, as well as aesthetics, habitat, bank stability, timber production, and their contribution to overall biodiversity.
HCVA	Designated Critical Habitat	Critical habitat areas are established via a consultative and cooperative process between the DNR and the U.S. Fish and Wildlife service for the recovery of threatened and endangered species, as governed by Part 365, Endangered Species Protection, of the Natural Resources and Environmental Protection Act, 1994 PA 451, and the Federal Endangered Species Act of 1973. This is an active program, with proposed species plans in various stages of review. As of now only two exist, Kirtland Warbler Habitat and Piping Plover Habitat.



	Level 4 Cover Type	Size Density	Acres	Stand Age	BA Range	General Comments:
1	42220 - Natural Jack Pine	Poletimber Well	37.8	62	Unspecified	Held for visual concerns while establishing the stand to the north.
2	4310 - Pine, Oak Mix	Poletimber Well	9.0	53	51-80	
3	4310 - Pine, Oak Mix	Poletimber Well	62.8	40	Unspecified	Good mix of jack pine and oak. Less dense in the middle of the stand.
5	42120 - Planted Jack Pine	Poletimber Well	112.6	32	Unspecified	OPIC - FMD: Warbler Weave
6	42120 - Planted Jack Pine	Poletimber Medium	8.3	37	Unspecified	scattered oak, and some small openings
7	42290 - Natural Mixed Pine	Sawtimber Well	9.1	74	81-110	held for visual concerns in the past. Now surrounding stands have been re-established.
8	42110 - Planted Red Pine	Sawtimber Well	20.3	67	81-110	Clear Pit Pine 54-017-07-01 was cut in spring of 08. thinning removed all jack pine, aspen, and some oak and left all red pine.
9	4310 - Pine, Oak Mix	Sapling Well	18.3	7	Immature	Stand was cut in Summer 2008. Part of STP Complex 54-038-07-01 left oak and red pine for visual from original stand.
10	42141 - Planted Mixed Pine, Mixed Deciduous	Sapling Well	31.3	17	Immature	Scattered mature oak with natural jack pine and oak regeneration along with planted red pine (planted in 1998)
11	42120 - Planted Jack Pine	Poletimber Well	27.8	32	Unspecified	OPIC - FMD: Warbler Weave
12	4129 - Mixed Oak	Poletimber Well	17.9	92	81-110	Stand was treated approx. 30 yrs ago
13	42121 - Planted Jack Pine, Mixed Deciduous	Sapling Well	4.3	6	Immature	Stand was cut in Summer 2008. Part of STP Complex 54-038-07-01
14	42110 - Planted Red Pine	Sawtimber Well	7.1	59	81-110	Stand was thinned in Summer 2008. Part of STP Complex 54-038-07-01
15	42120 - Planted Jack Pine	Sapling Well	188.0	20	Immature	
17	4191 - Mixed Upland Deciduous with Conifer	Poletimber Well	9.4	35	Unspecified	
19	42121 - Planted Jack Pine, Mixed Deciduous	Sapling Well	31.9	6	Immature	Stand was cut in Summer 2008. Part of STP Complex 54-038-07-01 Planted in 2009



	Level 4 Cover Type	Size Density	Acres	Stand Age	BA Range	General Comments:
21	4199 - Other Mixed Upland Deciduous	Poletimber Well	31.0	32	51-80	2 aged stand. Oak stand was shelterwooded in 1983 - little to no oak regen resulting from the cut. Full density of red maple and aspen regenerated.
22	4130 - Aspen	Sapling Well	22.4	7	Immature	Sale cut in summer 2008. 54-031-07-01. Tomahawk's West Aspen
23	4130 - Aspen	Sapling Well	5.7	32	Immature	stand was cut in 1983
24	42111 - Planted Red Pine, Mixed Deciduous	Sawtimber Medium	9.5	82	51-80	Stand was thinned in Summer 2008, jack pine was removed and red pine and red oak were thinned. Part of STP Complex 54-038-07-01
25	4123 - Red Oak	Poletimber Well	7.1	41	51-80	
26	6111 - Lowland Balsam Poplar	Sapling Well	10.7	35	Unspecified	
27	42220 - Natural Jack Pine	Poletimber Well	29.7	51	Unspecified	Stand is very variable in diameters and has pockets of younger and older trees. The northern half of the stand is retention along the Tomahawk Flooding and the southern half includes slopes along the lowland P type.
29	42120 - Planted Jack Pine	Sapling Well	57.2	15	Immature	small fire in summer 2004.
30	42220 - Natural Jack Pine	Poletimber Well	33.2	67	Unspecified	
31	42220 - Natural Jack Pine	Poletimber Medium	7.5	59	Unspecified	tree diameters and ages are variable throughout the stand. there are some open areas along the flooding.
33	4131 - Aspen, Oak	Sapling Well	45.0	7	Immature	
35	42220 - Natural Jack Pine	Poletimber Well	40.1	66	Unspecified	
36	42290 - Natural Mixed Pine	Poletimber Well	39.8	67	51-80	
37	42110 - Planted Red Pine	Poletimber Well	19.9	59	111-140	Stand was 3rd row thinned in Summer 2008. Part of STP Complex 54-038-07-01
38	42110 - Planted Red Pine	Poletimber Well	4.5	59	111-140	Unthinned
39	42121 - Planted Jack Pine, Mixed Deciduous	Sapling Well	11.8	6	Immature	Stand was cut in Summer 2008. Part of STP Complex 54-038-07-01 Planted in 2009. some aspen along the west edge.

S
t
a
n
d

Atlanta Mgt. Unit

Report 8 – Forested Stands

Compartment: 63
Year of Entry: 2017

Level 4 Cover Type	Size Density	Acres	Stand Age	BA Range	General Comments:
42120 - Planted Jack Pine	Sapling Well	332.7	33	Unspecified	Few scattered mature oak.
42120 - Planted Jack Pine	Sapling Well	108.5	40	Unspecified	
4130 - Aspen	Poletimber Well	7.4	33	Unspecified	
4131 - Aspen, Oak	Sapling Well	7.8	6	Immature	Some scattered red pine and oaks. Stand cut in spring of 2009. 54-028-07-01 Chocolate Aspen.
42120 - Planted Jack Pine	Poletimber Well	27.3	33	Unspecified	Jack pine is right on the edge between non-merchantable and merchantable.
4130 - Aspen	Poletimber Well	50.5	32	Unspecified	Stand is right on the edge of non-merchantable becoming merchantable.
4131 - Aspen, Oak	Sapling Well	12.9	6	Immature	Few scattered log sized oak. Stand cut in spring 2009. 54-028-07-01 Chocolate Aspen.
42121 - Planted Jack Pine, Mixed Deciduous	Sapling Well	38.8	5	Immature	Stand was cut in Spring 2010. Part of STP Complex 54-038-07-01
4130 - Aspen	Sapling Well	81.4	26	Immature	
4199 - Other Mixed Upland Deciduous	Poletimber Well	7.8	90	81-110	Stand was cut in 1989 but all oak was left behind. understory is mostly red maple and aspen.
6120 - Lowland Cedar	Poletimber Well	4.9	96	141-170	
4131 - Aspen, Oak	Sapling Well	7.1	6	Immature	
4131 - Aspen, Oak	Poletimber Well	39.8	66	Unspecified	
42120 - Planted Jack Pine	Poletimber Well	5.9	40	Unspecified	
42120 - Planted Jack Pine	Sapling Medium	2.3	45	Unspecified	
42220 - Natural Jack Pine	Poletimber Well	13.5	76	Unspecified	
42120 - Planted Jack Pine	Poletimber Well	144.2	34	Unspecified	



	Level 4 Cover Type	Size Density	Acres	Stand Age	BA Range	General Comments:
64	4130 - Aspen	Poletimber Well	32.3	78	Unspecified	Large clearcut to the south and east, follow green up guidelines for any future treatments. maintain for visual along M33 until surrounding stand heights are approx. 10 ft or more. heavier jack pine along M-33 and more red pine along the old clay pits.
67	4130 - Aspen	Sapling Well	28.3	6	Immature	Stand cut in spring 2009. 54-028-07-01 Chocolate Aspen.
68	4130 - Aspen	Poletimber Well	20.7	36	Unspecified	
73	42120 - Planted Jack Pine	Sapling Well	207.1	20	Immature	OPIC - FMD: Warbler Weave
75	42220 - Natural Jack Pine	Poletimber Well	10.8	47	Unspecified	Retain for visual along M-33 until surrounding stands are above 10 ft tall.
77	42210 - Natural Red Pine	Sawtimber Medium	193.3	67	51-80	cut 2 entries ago and removed everything except red pine and red oak
78	4199 - Other Mixed Upland Deciduous	Poletimber Well	20.8	67	81-110	OPIC - FMD: Steep hill along clear cuts.
81	4131 - Aspen, Oak	Poletimber Well	42.0	79	Unspecified	
82	4131 - Aspen, Oak	Poletimber Well	52.6	45	Unspecified	
83	42120 - Planted Jack Pine	Poletimber Well	6.8	45	Unspecified	stand was left as retention from original parent stand.
84	42221 - Natural Jack Pine, Mixed Deciduous	Poletimber Well	30.1	47	Unspecified	aspen pocket on north end
86	6122 - Black Spruce	Poletimber Well	7.6	92	111-140	
87	42210 - Natural Red Pine	Sawtimber Well	7.3	76	111-140	



Stand	Cover Type	Acres	Managed Site	General Comments:
4	330 - Low-Density Trees	2.1	No	
16	760 - Non-stocked Forest	463.6		Stand was cut as part of sale #54-021-10-01 "Little Group Jack." Stand was clearcut 05/2012 and is trenched and planted back to jack pine.
18	122 - Road/Parking Lot	13.9	No	OPIC - FMD: Power Line, Stand 111 has ORV problems
20	330 - Low-Density Trees	1.4		
28	510- Water (OI)	99.5	No	OPIC - FMD: Tomahawk Creek Flooding. Standing dead timber to south end. Purple Loosestrife around entire edge of lake. Stand 19 and 20 are scheduled for a final harvest/shelterwood cut of jack pine or oak, along the south shoreline of Tomahawk Flooding. Fisheries Division asks for a 25 foot cut free zone or selective cut inward from the lake shoreline. This is to provide a stable riparian zone, and to encourage the natural recruitment of woody debris to the flooding/lake. The flooding currently has a healthy panfish, largemouth bass, and northern pike population and in-lake woody debris is an important cover type.
32	6229 - Mixed lowland shrub	16.5	No	OPIC - FMD: OI Stand Year Origin was
34	3102 - Grass	13.0	No	power line. ORV problems in places
52	3102 - Grass	2.1	No	
53	629 - Mixed non-forested wetland	2.9	No	Low area filling in with balsam poplar and aspen. ORV Scramble area. Received Variance (06/05/08 to plant jack pine in portions of this stand to control ORV's.
54	3102 - Grass	2.3	No	
55	3102 - Grass	1.3	No	
56	122 - Road/Parking Lot	6.9	No	OPIC - FMD: Clay Pit Road
58	122 - Road/Parking Lot	13.2	No	OPIC - FMD: Millersburg Road
61	122 - Road/Parking Lot	3.1	No	OPIC - FMD: Millersburg Road
65	3102 - Grass	1.6	No	
66	3102 - Grass	1.7	No	



Stand	Cover Type	Acres	Managed Site	General Comments:
69	3102 - Grass	1.9	No	
70	3102 - Grass	2.7	No	
71	330 - Low-Density Trees	2.8	No	
72	3102 - Grass	1.4	No	
74	710 - Sand, Soil	1.3	No	old clay pit
76	330 - Low-Density Trees	10.5	No	old gravel pit, ORV scramble area
79	122 - Road/Parking Lot	3.4	No	OPIC - FMD: Tower Road
80	6224 - Treed Bog	5.1	No	jack pine and black spruce on a bog.
85	6229 - Mixed lowland shrub	8.5	No	