



# Compartment Review Presentation

Atlanta Forest Management Unit

Compartment 54063

Entry Year 2017

Acreage: 3,206

County Montmorency

Management Area: Kirtland's Warbler

---

**Revision Date:** 2015-06-18

**Stand Examiner:** Chad Fate

**Legal Description:**

T32N-R2E Sections 3, 4, 9, 10, 15, 22 & 27

**Identified Planning Goals:**

The main goal in this compartment is to manage for Kirtland's Warbler habitat and to conduct multiple resource management for the good of the citizens of the State of Michigan.

**Soil and topography:**

The compartment is predominately located on Sandy soils including Graycalm and Grayling types. The compartments topography is rolling hills with some steep ridges.

**Ownership Patterns, Development, and Land Use in and Around the Compartment:**

The compartment is surrounded predominately by state land with private land along the north west and two private 40 acre inholdings. Land use in the area comes from the recreational users (ORV, Snowmobile, hunting), and Antrim gas development.

**Unique Natural Features:**

Some species present in area.

**Archeological, Historical, and Cultural Features:**

None known.

**Special Management Designations or Considerations:**

NA

**Watershed and Fisheries Considerations:**

There is a 100' buffer along Tomahawk Flooding and riparian areas where treatments are prescribed to encourage the natural recruitment of woody debris to the flooding/lake. The flooding currently has a healthy panfish, largemouth bass, and northern pike population and in-lake woody debris is an important cover type.

**Wildlife Habitat Considerations:**

The primary focus of wildlife habitat management will be to address the habitat requirements identified for the listed featured species found in this compartment. These species include kirtlands warbler, ruffed grouse, black bear, and white-tailed deer. Based on the selected featured species, some of the most significant wildlife management issues in the management area are the maintenance of young forest, the retention of large, over-mature trees and snags and the maintenance and expansion of hard mast and mesic conifer components.

**Mineral Resource and Development Concerns and/or Restrictions**

Surface sediments consist of coarse-textured glacial till and glacial outwash sand and gravel and postglacial alluvium. The glacial drift thickness varies between 200 and 400 feet. Beneath the glacial drift is the Devonian Antrim Shale and Traverse Formation. The Antrim is quarried for cement products and the Traverse for limestone. Gravel pits are located in Sections 10, 15, and 27 and potential is good. This area has had Antrim Shale development on the south end. The Antrim Shale is thinning and appears to be gone on the north end. Leasing is limited to the south (sections 22 and 27) with drilling advancing slowly to the north.

**Vehicle Access:**

The compartment is bordered by M-33 and easily accessed off of Millersburg Road and Clay Pit Road. The area has many two tracks that provide access to the entire area.

**Survey Needs:**

None known at this time.

### **Recreational Facilities and Opportunities:**

There are many opportunities for hunting, wildlife viewing and mushrooming in the area. Tomahawk Flooding provides many good fishing opportunities. The ORV trail, snowmobile trail and the High Country Pathway run through the compartment.

### **Fire Protection:**

This compartment is located in the protection area of the Atlanta DNR and the Hillman Fire Department. Hillman Fire department would most likely be last on scene of any fire in the area due to their distance from the area. The Atlanta DNR has mutual aid agreements with Hillman Fire Department and also supplies them with GSA 6x6 fire unit. The Tri-Township Fire Department would also respond due to mutual aid agreements with Hillman and their close proximity. Fires in this area have the potential to become very large. Historically the fires in this large Jack Pine area have been from debris burning and lightning.

### **Additional Compartment Information:**

This area gets a large amount of illegal ORV activity on the power line and two tracks.

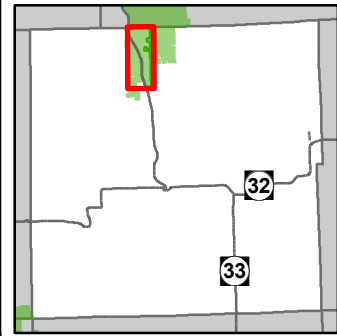
### **The following reports from the Inventory are attached:**

- Total Acres by Cover Type and Age Class**
- Cover Type by Harvest Method**
- Proposed Treatments – No Limiting Factors**
- Proposed Treatments – With Limiting Factors**
- Stand Details (Forested and Nonforested)**
- Dedicated and Proposed Special Conservation Areas**
- Site Condition Details**

### **The following information is displayed, where pertinent, on the attached compartment maps:**

- Base feature information, stand boundaries, cover types, and numbers**
- Proposed treatments**
- Site condition boundaries**
- Details on the road access system**

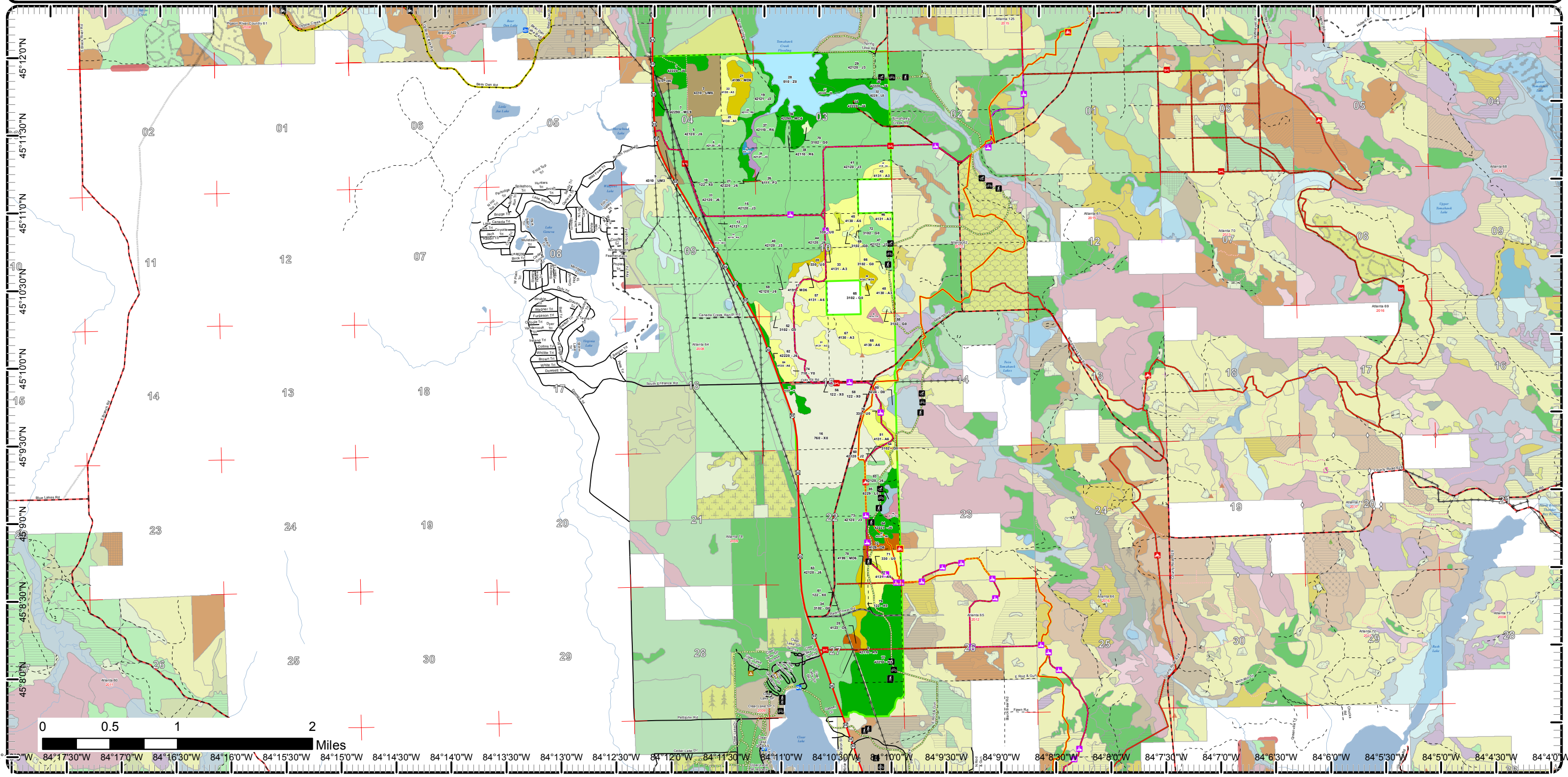
# Cover Type & Treatments



Compartment: 63  
 T32N, 02E,  
 Sec: 3, 4, 9, 10, 15, 16, 22, 27  
 County: Montmorency  
 Unit: Atlanta  
 Mgmt Area: Kirtland's Warbler  
 YOE: 2017  
 Acres: 3206 GIS Calculated  
 Examiner: Chad Fate  
 Map Revised: 5/19/2015  
 Map Phase: Pre-Review

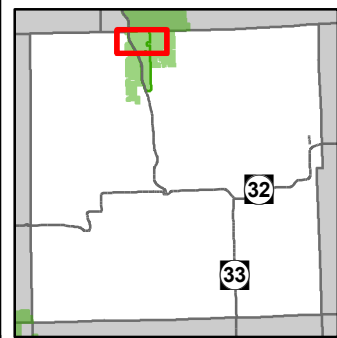
- ◇ Field Grade GPS Corners
- Miris Corners
- Highway
- Paved Roads
- County Gravel Roads
- Gravel Roads
- Poor Dirt Roads
- Trail (Non-Recreation)
- Closed Roads
- ▲ Berms
- ⓘ Boating Access Site
- ▲ Campground
- 🌲 Tree (marking)
- 🚲 Bike Trails
- 🏍️ Motorcycle Trails (SOS License)
- 🚶 Hiking Trails
- 🛴 MCCCT Trails
- 🛴 ORV Trails
- 🛴 ORV Routes
- 🛴 Ski Trails
- 🛴 Snowmobile Trails
- 🌿 Hiking Pathways
- 🚲 Bicycle/Dirt Bike Trails
- 🛴 Ski Trails
- 🏍️ Motorcycle, Secretary of State License
- 🛴 ORV Route
- 🛴 ATV Trail
- 🛴 MCCCT Trails
- 🛴 Snowmobile Trails
- 🌊 Rivers
- 🌊 Lakes
- 📡 Pipeline
- ⚡ Powerline

- Forest Covertype**
- 412 - Oak Types
  - 413 - Aspen
  - 419 - Mixed Upland Deciduous
  - 421 - Planted Pines
  - 422 - Natural Pines
  - 430 - Upland Mixed Fores
  - 611 - Lowland Deciduous Forest
  - 612 - Lowland Coniferous Forest
- Non-Forest Covertype**
- 122 - Roads/Parking Lot
  - 310 - Herbaceous Openland
  - 330 - Low Density Trees
- Other Covertypes**
- 500 - Water
  - 622 - Lowland Shrub
  - 629 - Mixed non-forested wetland
  - 710 - Sand/Soil
  - 790 - Other Bare/Sparsely Vegetated



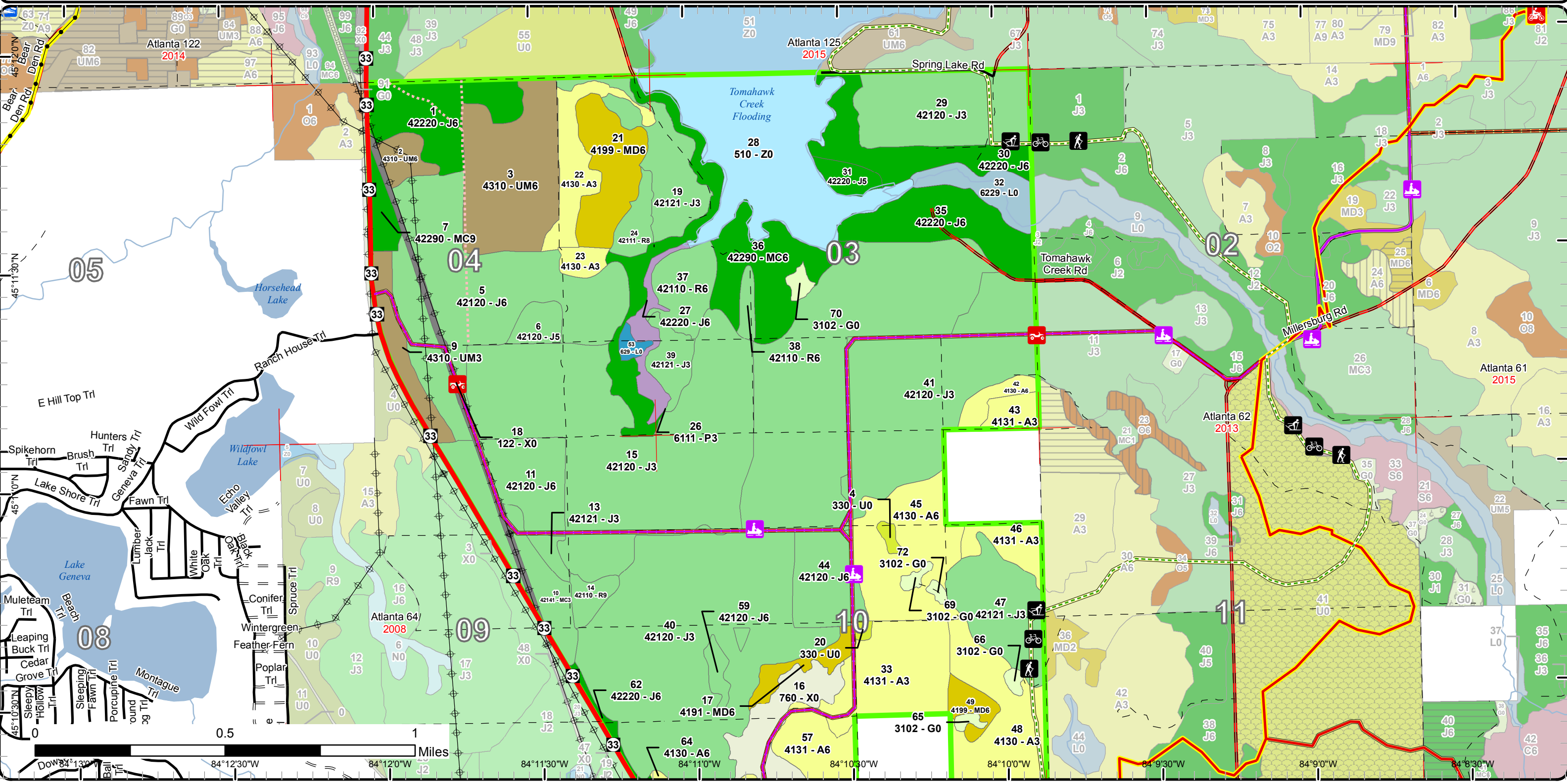
84°17'30"W 84°17'00"W 84°16'30"W 84°16'00"W 84°15'30"W 84°15'00"W 84°14'30"W 84°14'00"W 84°13'30"W 84°13'00"W 84°12'30"W 84°12'00"W 84°11'30"W 84°11'00"W 84°10'30"W 84°10'00"W 84°9'30"W 84°9'00"W 84°8'30"W 84°8'00"W 84°7'30"W 84°7'00"W 84°6'30"W 84°6'00"W 84°5'30"W 84°5'00"W 84°4'30"W 84°4'00"W

# Cover Type & Treatments

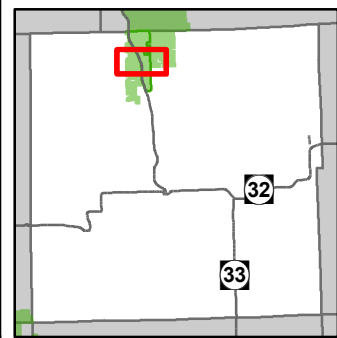


Compartment: 63  
 T32N, 02E,  
 Sec: 3, 4, 9, 10, 15, 16, 22, 27  
 County: Montmorency  
 Unit: Atlanta  
 Mgmt Area: Kirtland's Warbler  
 YOE: 2017  
 Acres: 3206 GIS Calculated  
 Examiner: Chad Fate  
 Map Revised: 5/19/2015  
 Map Phase: Pre-Review

- Miris Corners
- Highway
- Paved Roads
- County Gravel Roads
- Gravel Roads
- Poor Dirt Roads
- Closed Roads
- Boating Access Site
- Bike Trails
- Hiking Trails
- MCCCT Trails
- ORV Routes
- Ski Trails
- Snowmobile Trails
- Hiking Pathways
- Bicycle/Dirt Bike Trails
- Ski Trails
- Motorcycle, Secretary of State License
- ORV Route
- ATV Trail
- MCCCT Trails
- Snowmobile Trails
- Rivers
- Lakes
- Pipeline
- Powerline
- Forest Covertype
- 413 - Aspen
- 419 - Mixed Upland Deciduous
- 421 - Planted Pines
- 422 - Natural Pines
- 430 - Upland Mixed Fores
- 611 - Lowland Deciduous Forest
- Non-Forest Covertype
- 122 - Roads/Parking Lot
- 310 - Herbaceous Openland
- 330 - Low Density Trees
- 500 - Water
- 622 - Lowland Shrub
- 629 - Mixed non-forested wetland
- 790 - Other Bare/Sparsely Vegetated

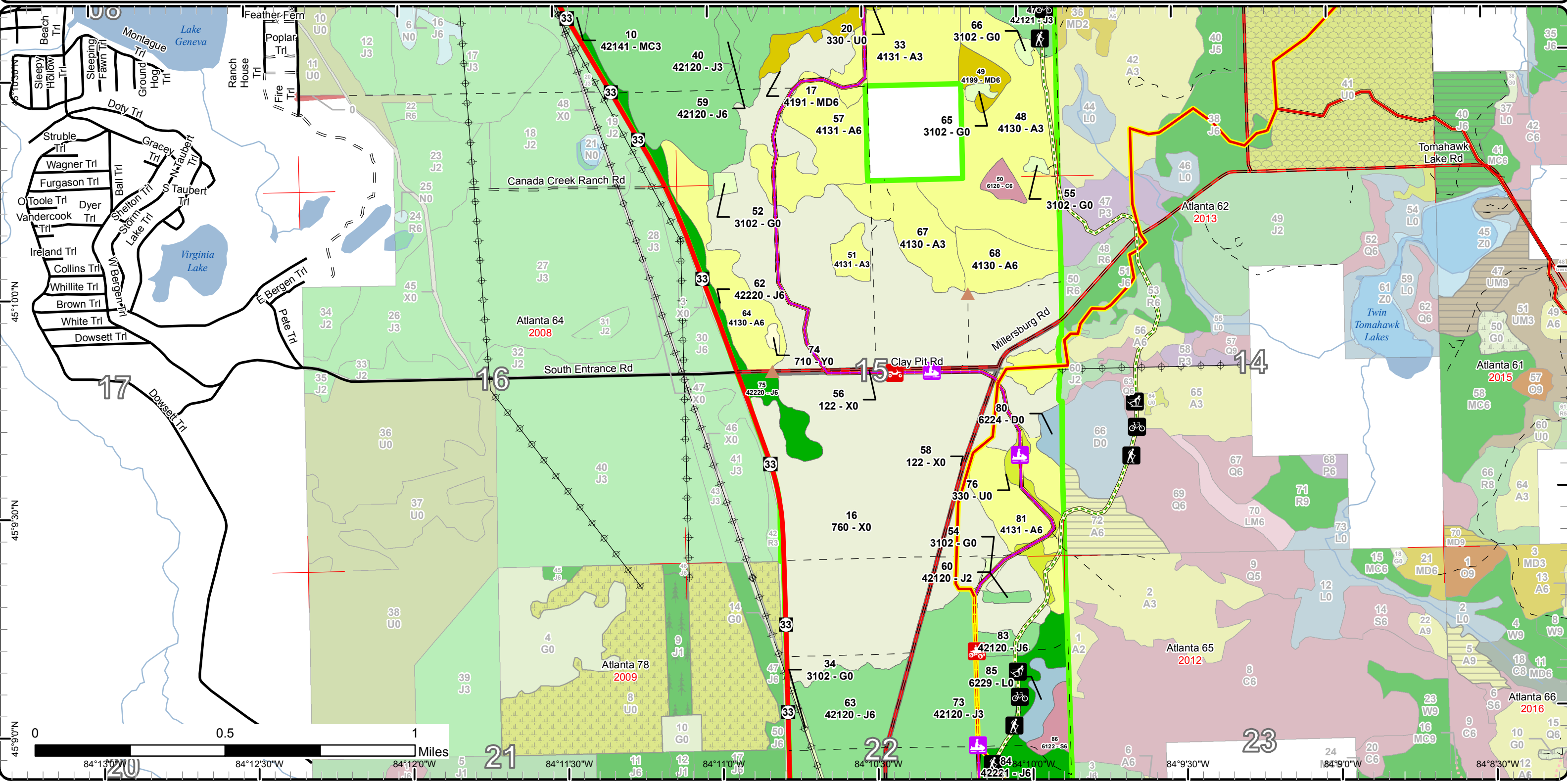


# Cover Type & Treatments



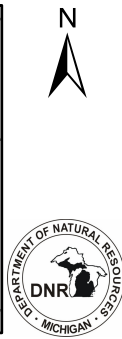
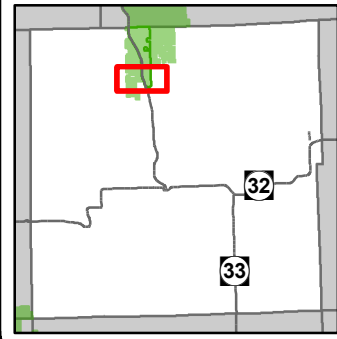
Compartment: 63  
 T32N, 02E,  
 Sec: 3, 4, 9, 10, 15, 16, 22, 27  
 County: Montmorency  
 Unit: Atlanta  
 Mgmt Area: Kirtland's Warbler  
 YOE: 2017  
 Acres: 3206 GIS Calculated  
 Examiner: Chad Fate  
 Map Revised: 5/19/2015  
 Map Phase: Pre-Review

- |  |  |   |  |
|--|--|---|--|
| <ul style="list-style-type: none"> <li><span style="color: red;">—</span> Miris Corners</li> <li><span style="color: red; font-weight: bold;">—</span> Highway</li> <li><span style="color: black; font-weight: bold;">—</span> Paved Roads</li> <li><span style="color: brown; font-weight: bold;">—</span> County Gravel Roads</li> <li><span style="color: gray; font-weight: bold;">—</span> Gravel Roads</li> <li><span style="color: gray; font-weight: bold;">- -</span> Poor Dirt Roads</li> <li><span style="color: red; font-weight: bold;">- - -</span> Closed Roads</li> <li><span style="color: brown;">▲</span> Berms</li> <li><span style="color: black;">🚲</span> Bike Trails</li> <li><span style="color: black;">🚶</span> Hiking Trails</li> <li><span style="color: red;">🛵</span> ORV Trails</li> <li><span style="color: red;">🛵</span> ORV Routes</li> </ul> | <ul style="list-style-type: none"> <li><span style="color: black;">🏂</span> Ski Trails</li> <li><span style="color: purple;">🛷</span> Snowmobile Trails</li> <li><span style="color: green; font-weight: bold;">- - -</span> Hiking Pathways</li> <li><span style="color: red; font-weight: bold;">- - -</span> Bicycle/Dirt Bike Trails</li> <li><span style="color: blue; font-weight: bold;">- - -</span> Ski Trails</li> <li><span style="color: red; font-weight: bold;">= = =</span> ORV Route</li> <li><span style="color: red; font-weight: bold;">—</span> ATV Trail</li> <li><span style="color: yellow; font-weight: bold;">—</span> MCCCT Trails</li> <li><span style="color: purple; font-weight: bold;">—</span> Snowmobile Trails</li> <li><span style="color: blue;">—</span> Rivers</li> <li><span style="color: blue;">—</span> Lakes</li> <li><span style="color: black;">⚡</span> Powerline</li> </ul> | <p>Forest Coverture</p> <ul style="list-style-type: none"> <li><span style="color: yellow;">■</span> 413 - Aspen</li> <li><span style="color: orange;">■</span> 419 - Mixed Upland Deciduous</li> <li><span style="color: lightgreen;">■</span> 421 - Planted Pines</li> <li><span style="color: green;">■</span> 422 - Natural Pines</li> <li><span style="color: brown;">■</span> 612 - Lowland Coniferous Forest</li> </ul> <p>Non-Forest Coverture</p> <ul style="list-style-type: none"> <li><span style="color: gray;">■</span> 122 - Roads/Parking Lot</li> <li><span style="color: lightgreen;">■</span> 310 - Herbaceous Openland</li> <li><span style="color: yellow;">■</span> 330 - Low Density Trees</li> <li><span style="color: blue;">■</span> 622 - Lowland Shrub</li> <li><span style="color: lightyellow;">■</span> 710 - Sand/Soil</li> </ul> | <ul style="list-style-type: none"> <li><span style="color: lightgray;">■</span> 790 - Other Bare/Sparsely Vegetated</li> </ul> |
|--|--|---|--|

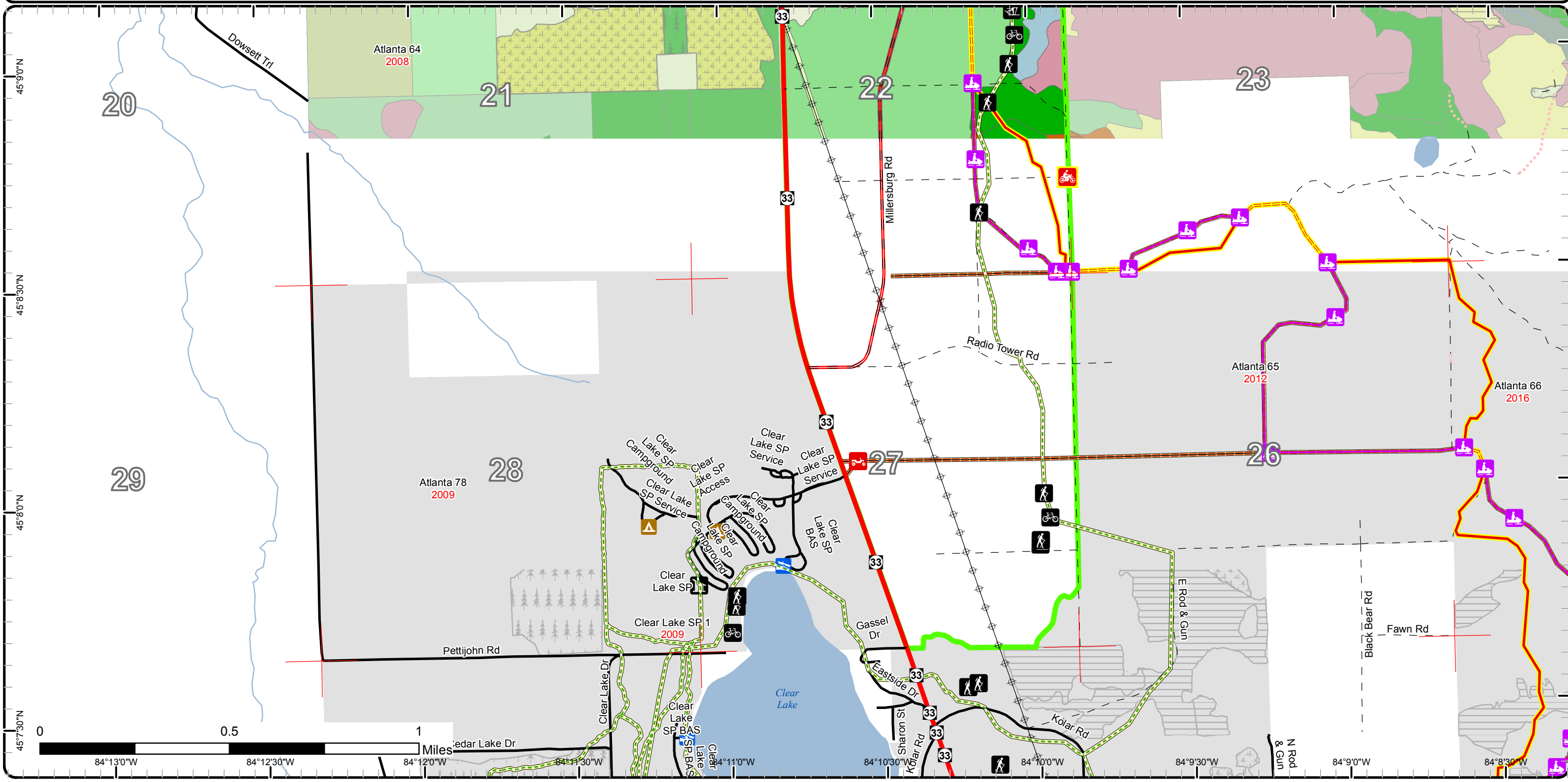


# Cover Type & Treatments

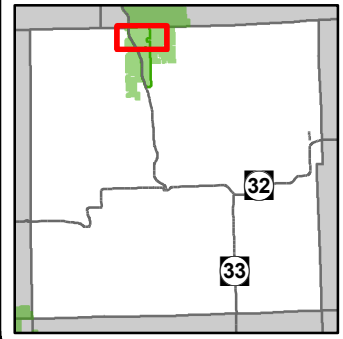
Compartment: 63  
 T32N, 02E,  
 Sec: 3, 4, 9, 10, 15, 16, 22, 27  
 County: Montmorency  
 Unit: Atlanta  
 Mgmt Area: Kirtland's Warbler  
 YOE: 2017  
 Acres: 3206 GIS Calculated  
 Examiner: Chad Fate  
 Map Revised: 5/19/2015  
 Map Phase: Pre-Review



- Miris Corners
- Highway
- Paved Roads
- County Gravel Roads
- - - Poor Dirt Roads
- - - Closed Roads
- Boating Access Site
- Campground
- Bike Trails
- Hiking Trails
- MCCCT Trails
- ORV Routes
- Ski Trails
- Snowmobile Trails
- - - Hiking Pathways
- - - Bicycle/Dirt Bike Trails
- - - Ski Trails
- ORV Route
- ATV Trail
- MCCCT Trails
- Rivers
- Lakes
- Powerline

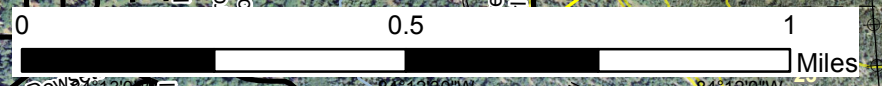
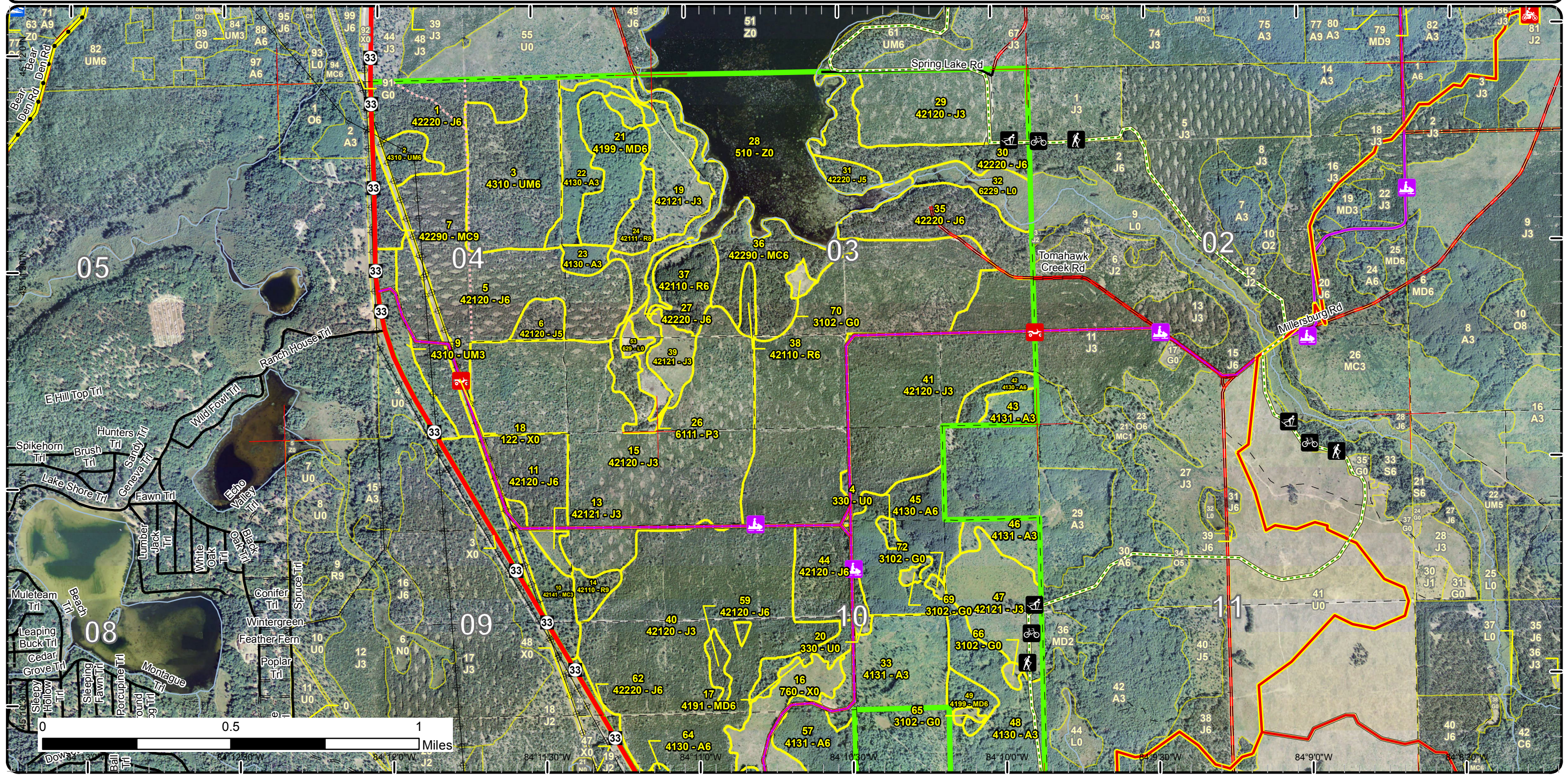


# Stand Boundary Map



Compartment: 63  
 T32N, 02E,  
 Sec: 3, 4, 9, 10, 15, 16, 22, 27  
 County: Montmorency  
 Unit: Atlanta  
 Mgmt Area: Kirtland's Warbler  
 YOE: 2017  
 Acres: 3206 GIS Calculated  
 Examiner: Chad Fate  
 Map Revised: 5/19/2015  
 Map Phase: Pre-Review

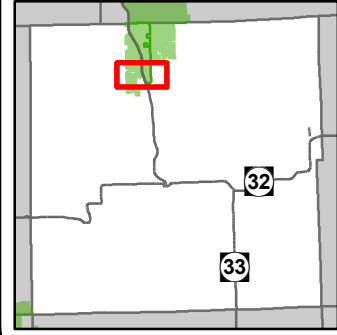
- Miris Corners
- Highway
- Paved Roads
- County Gravel Roads
- Gravel Roads
- - Poor Dirt Roads
- - - Closed Roads
- Boating Access Site
- Bike Trails
- Hiking Trails
- MCCCT Trails
- ORV Routes
- Ski Trails
- Snowmobile Trails
- - - Hiking Pathways
- - - Bicycle/Dirt Bike Trails
- - - Ski Trails
- Motorcycle, Secretary of State License
- - - ORV Route
- ATV Trail
- MCCCT Trails
- Snowmobile Trails
- Rivers
- Pipeline
- Powerline
- Stand Boundaries
- Forest Coverture
  - 413 - Aspen
  - 419 - Mixed Upland Deciduous
  - 421 - Planted Pines
  - 422 - Natural Pines
  - 430 - Upland Mixed Fores
  - 611 - Lowland Deciduous Forest
- Non-Forest Coverture
  - 122 - Roads/Parking Lot
  - 310 - Herbaceous Openland
  - 330 - Low Density Trees
  - 500 - Water
  - 622 - Lowland Shrub
  - 629 - Mixed non-forested wetland
  - 790 - Other Bare/Sparsely Vegetated







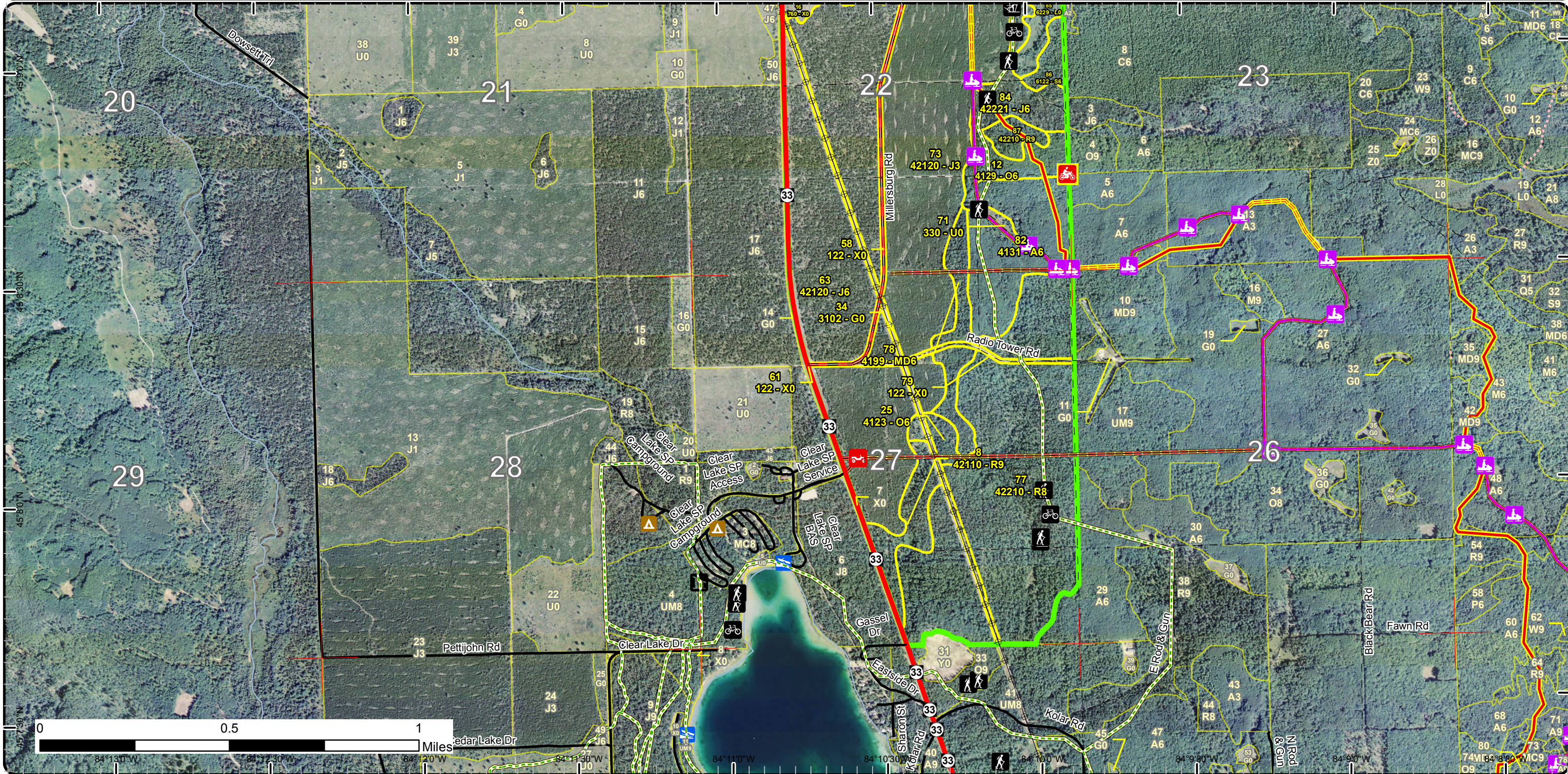
# Stand Boundary Map



Compartment: 63  
 T32N, 02E,  
 Sec: 3, 4, 9, 10, 15, 16, 22, 27  
 County: Montmorency  
 Unit: Atlanta  
 Mgmt Area: Kirtland's Warbler  
 YOE: 2017  
 Acres: 3206 GIS Calculated  
 Examiner: Chad Fate  
 Map Revised: 5/19/2015  
 Map Phase: Pre-Review

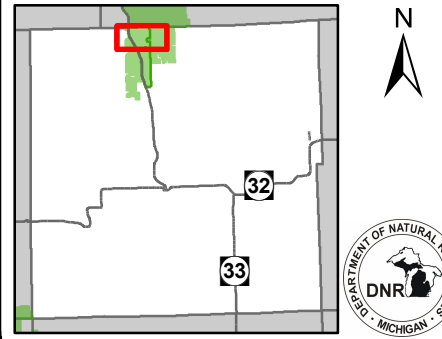
- |   |  |  |
|---|--|--|
| <ul style="list-style-type: none"> <li> Miris Corners</li> <li> Highway</li> <li> Paved Roads</li> <li> County Gravel Roads</li> <li> Poor Dirt Roads</li> <li> Closed Roads</li> <li> Boating Access Site</li> <li> Campground</li> <li> Bike Trails</li> <li> Hiking Trails</li> <li> MCCCT Trails</li> </ul> | <ul style="list-style-type: none"> <li> ORV Routes</li> <li> Ski Trails</li> <li> Snowmobile Trails</li> <li> Hiking Pathways</li> <li> Bicycle/Dirt Bike Trails</li> <li> Ski Trails</li> <li> ORV Route</li> <li> ATV Trail</li> <li> MCCCT Trails</li> <li> Snowmobile Trails</li> <li> Rivers</li> <li> Powerline</li> </ul> | <ul style="list-style-type: none"> <li> Stand Boundaries</li> </ul> <p>Forest Coverture</p> <ul style="list-style-type: none"> <li>412 - Oak Types</li> <li>413 - Aspen</li> <li>419 - Mixed Upland Deciduous</li> <li>421 - Planted Pines</li> <li>422 - Natural Pines</li> <li>612 - Lowland Coniferous Forest</li> </ul> <p>Non-Forest Coverture</p> <ul style="list-style-type: none"> <li>122 - Roads/Parking Lot</li> <li>310 - Herbaceous Openland</li> <li>330 - Low Density Trees</li> <li>622 - Lowland Shrub</li> </ul> |
|---|--|--|

790 - Other Bare/Sparsely Vegetated



# Special Conservation Areas & Site Conditions Map

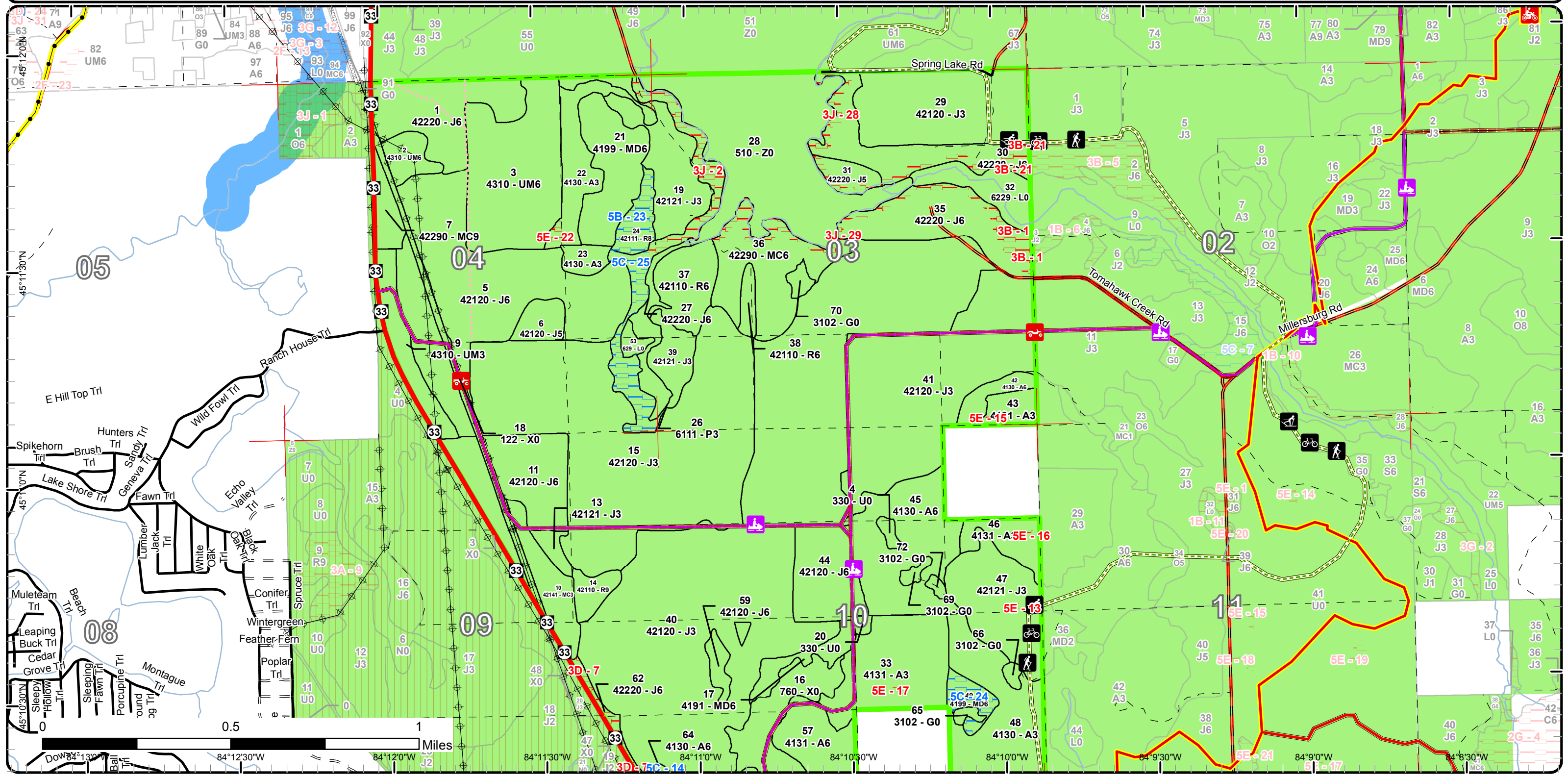
Compartment: 63  
 T32N, 02E,  
 Sec: 3, 4, 9, 10, 15, 16, 22, 27  
 County: Montmorency  
 Unit: Atlanta  
 Mgmt Area: Kirtland's Warbler  
 YOE: 2017  
 Acres: 3206 GIS Calculated  
 Examiner: Chad Fate  
 Map Revised: 5/19/2015  
 Map Phase: Pre-Review



- Miris Corners
- Highway
- Paved Roads
- County Gravel Roads
- Gravel Roads
- - Poor Dirt Roads
- - - Closed Roads
- Boating Access Site
- Bike Trails
- Hiking Trails
- MCCCT Trails
- ORV Routes
- Ski Trails
- Snowmobile Trails
- - - Hiking Pathways
- - - Bicycle/Dirt Bike Trails
- - - Ski Trails
- Motorcycle, Secretary of State License
- - - ORV Route
- ATV Trail
- Snowmobile Trails

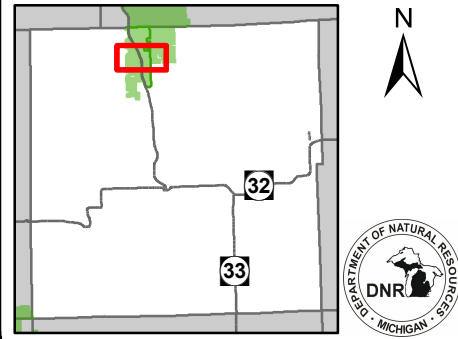
- Rivers
- Pipeline
- Powerline
- Stand Boundaries
- Site Condition
- Available w/ Constraints
- Unavailable
- Available Factors W/ Constraints
- 5B: Maintain for regeneration purposes
- 5C: Delay treatment for age/size class diversity or exceptional site quality

- Unavailable Factors
- 3B: Threatened, endangered, and special concern species/communities
  - 3D: Recreational / Scenic values
  - 3J: Water quality / BMPs (stream, river, or lake)
  - 5E: Long-Term Retention
  - Special Conservation Areas
  - Kirtland Warbler Habitat
  - Cold Water Streams
  - High Priority Trout Stream Buffer

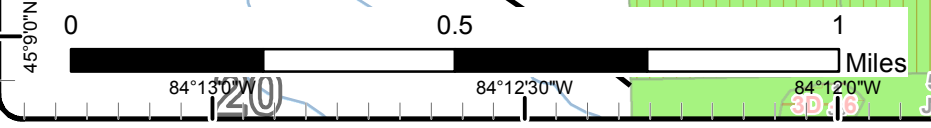
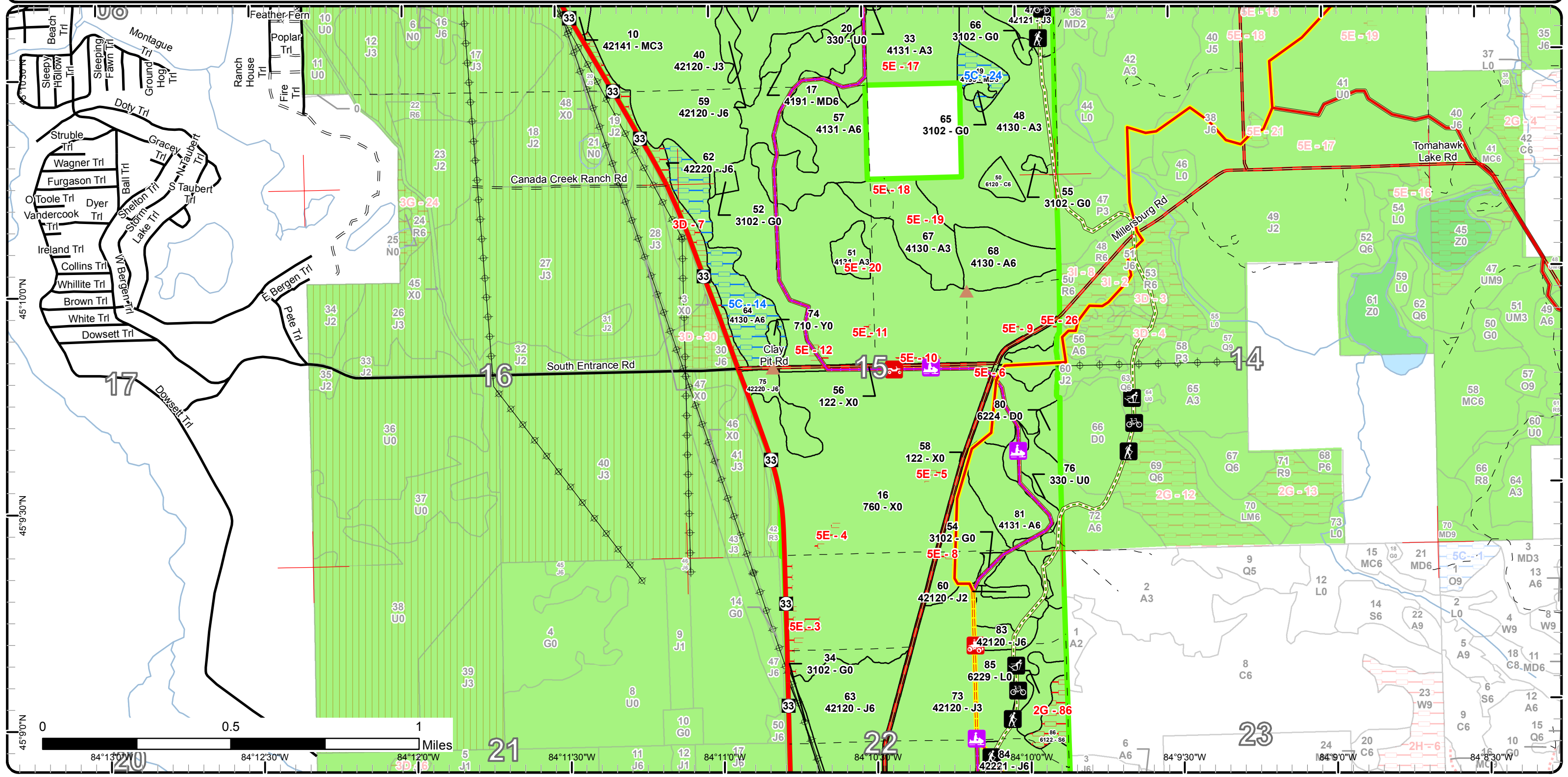


# Special Conservation Areas & Site Conditions Map

Compartment: 63  
 T32N, 02E,  
 Sec: 3, 4, 9, 10, 15, 16, 22, 27  
 County: Montmorency  
 Unit: Atlanta  
 Mgmt Area: Kirtland's Warbler  
 YOE: 2017  
 Acres: 3206 GIS Calculated  
 Examiner: Chad Fate  
 Map Revised: 5/19/2015  
 Map Phase: Pre-Review

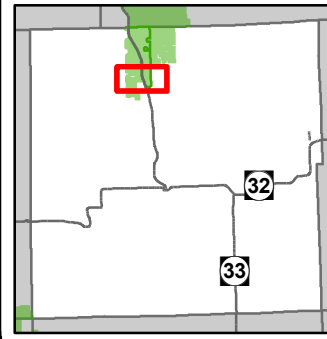


- |  |  |   |  |
|--|--|---|--|
| <ul style="list-style-type: none"> <li><span style="color: red;">—</span> Miris Corners</li> <li><span style="color: red; font-weight: bold;">—</span> Highway</li> <li><span style="color: black; font-weight: bold;">—</span> Paved Roads</li> <li><span style="color: brown; font-weight: bold;">—</span> County Gravel Roads</li> <li><span style="color: gray; font-weight: bold;">—</span> Gravel Roads</li> <li><span style="color: gray; font-weight: bold;">- -</span> Poor Dirt Roads</li> <li><span style="color: red; font-weight: bold;">- - -</span> Closed Roads</li> <li><span style="color: brown;">▲</span> Berms</li> <li><span style="color: black;">🚲</span> Bike Trails</li> <li><span style="color: black;">🚶</span> Hiking Trails</li> <li><span style="color: red;">🚙</span> ORV Trails</li> <li><span style="color: red;">🚙</span> ORV Routes</li> </ul> | <ul style="list-style-type: none"> <li><span style="color: black;">🚶</span> Ski Trails</li> <li><span style="color: purple;">🚙</span> Snowmobile Trails</li> <li><span style="color: green; font-weight: bold;">- - -</span> Hiking Pathways</li> <li><span style="color: red; font-weight: bold;">- - -</span> Bicycle/Dirt Bike Trails</li> <li><span style="color: blue; font-weight: bold;">- - -</span> Ski Trails</li> <li><span style="color: red; font-weight: bold;">= = =</span> ORV Route</li> <li><span style="color: red; font-weight: bold;">—</span> ATV Trail</li> <li><span style="color: yellow;">—</span> MCCCT Trails</li> <li><span style="color: purple;">—</span> Snowmobile Trails</li> <li><span style="color: blue;">—</span> Rivers</li> <li><span style="color: black;">⚡</span> Powerline</li> <li><span style="border: 1px solid black; display: inline-block; width: 10px; height: 10px;"></span> Stand Boundaries</li> </ul> | <p>Site Condition</p> <ul style="list-style-type: none"> <li><span style="color: blue;">—</span> Available w/ Constraints</li> <li><span style="color: red;">—</span> Unavailable</li> </ul> <p>Available Factors W/ Constraints</p> <ul style="list-style-type: none"> <li>5C: Delay treatment for age/size class diversity or exceptional site quality</li> </ul> <p>Unavailable Factors</p> <ul style="list-style-type: none"> <li>2G: Too wet (sensitive soils, does not include access issues)</li> <li>3D: Recreational / Scenic values</li> <li>5E: Long-Term Retention</li> </ul> | <ul style="list-style-type: none"> <li><span style="background-color: lightgreen; border: 1px solid black; display: inline-block; width: 15px; height: 10px;"></span> Kirtland Warbler Habitat</li> <li><span style="color: blue; font-weight: bold;">—</span> Cold Water Streams</li> <li><span style="background-color: lightblue; border: 1px solid black; display: inline-block; width: 15px; height: 10px;"></span> Cold Water Lakes</li> </ul> |
|--|--|---|--|

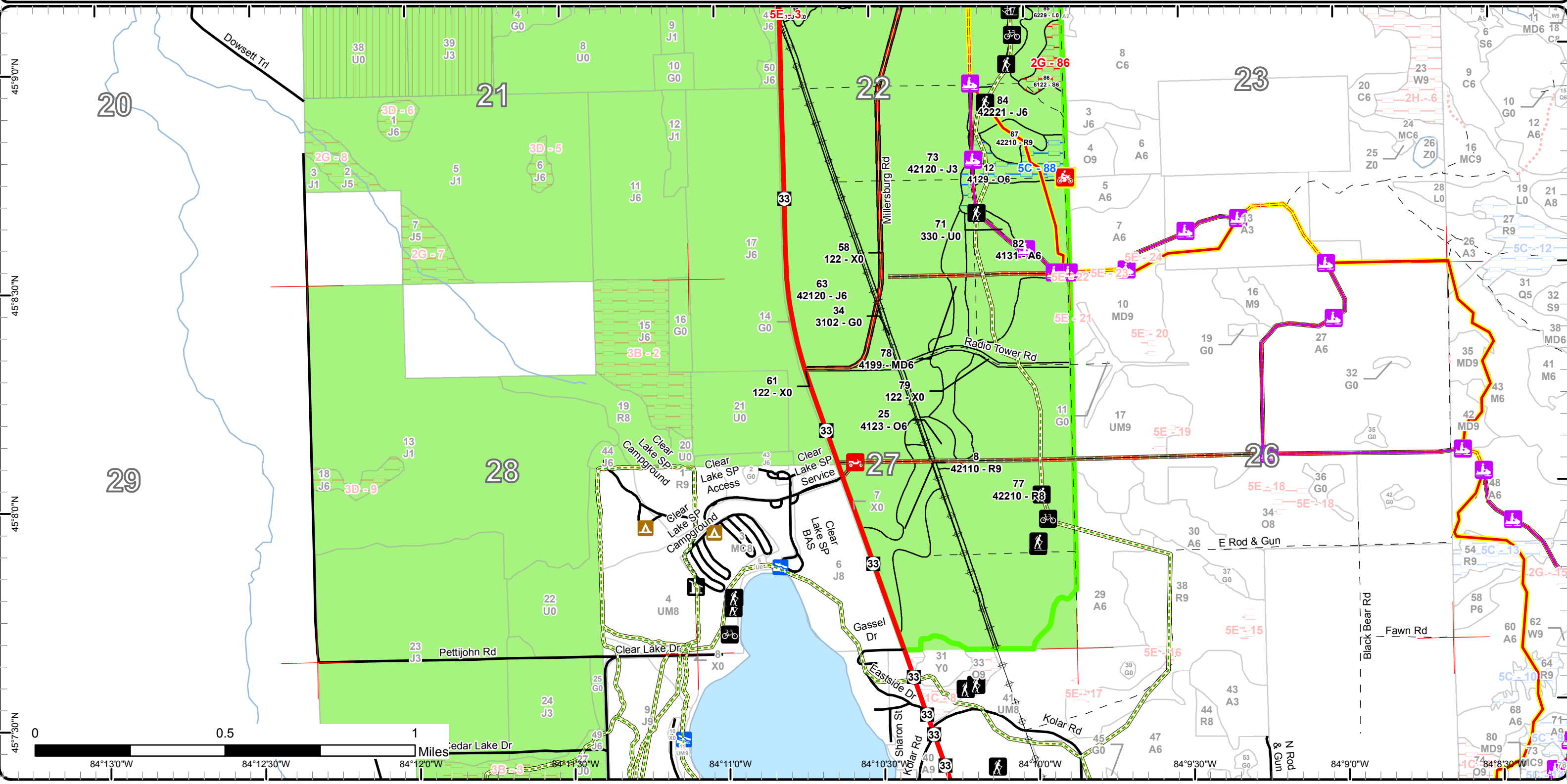


# Special Conservation Areas & Site Conditions Map

Compartment: 63  
 T32N, 02E,  
 Sec: 3, 4, 9, 10, 15, 16, 22, 27  
 County: Montmorency  
 Unit: Atlanta  
 Mgmt Area: Kirtland's Warbler  
 YOE: 2017  
 Acres: 3206 GIS Calculated  
 Examiner: Chad Fate  
 Map Revised: 5/19/2015  
 Map Phase: Pre-Review



- |  |  |  |   |
|--|--|--|---|
| <ul style="list-style-type: none"> <li><span style="color: red;">—</span> Miris Corners</li> <li><span style="color: red;">=</span> Highway</li> <li><span style="color: black;">=</span> Paved Roads</li> <li><span style="color: brown;">=</span> County Gravel Roads</li> <li><span style="color: gray;">- -</span> Poor Dirt Roads</li> <li><span style="color: red;">- - -</span> Closed Roads</li> <li> Boating Access Site</li> <li> Campground</li> <li> Bike Trails</li> <li> Hiking Trails</li> <li> MCCCT Trails</li> </ul> | <ul style="list-style-type: none"> <li> ORV Routes</li> <li> Ski Trails</li> <li> Snowmobile Trails</li> <li><span style="color: green;">- - -</span> Hiking Pathways</li> <li><span style="color: red;">- - -</span> Bicycle/Dirt Bike Trails</li> <li><span style="color: red;">=</span> ORV Route</li> <li><span style="color: red;">=</span> ATV Trail</li> <li><span style="color: yellow;">=</span> MCCCT Trails</li> <li><span style="color: purple;">=</span> Snowmobile Trails</li> <li><span style="color: blue;">=</span> Rivers</li> <li> Powerline</li> </ul> | <ul style="list-style-type: none"> <li><span style="border: 1px solid black; display: inline-block; width: 10px; height: 10px;"></span> Stand Boundaries</li> <li>Site Condition</li> <li><span style="color: blue;">=</span> Available w/ Constraints</li> <li><span style="color: red;">=</span> Unavailable</li> <li>Available Factors W/ Constraints</li> <li>5C: Delay treatment for age/size class diversity or exceptional site quality</li> <li>Unavailable Factors</li> <li>2G: Too wet (sensitive soils, does not include access issues)</li> <li>5E: Long-Term Retention</li> <li>Special Conservation Areas</li> </ul> | <ul style="list-style-type: none"> <li><span style="background-color: lightgreen; border: 1px solid black; display: inline-block; width: 15px; height: 10px;"></span> Kirtland Warbler Habitat</li> <li><span style="color: blue;">=</span> Cold Water Streams</li> <li><span style="background-color: lightblue; border: 1px solid black; display: inline-block; width: 15px; height: 10px;"></span> Cold Water Lakes</li> </ul> |
|--|--|--|---|



# Report 1 – Total Acres by Cover Type and Age Class

Atlanta Mgt. Unit  
Chad Fate : Examiner

Compartment 63 Year of Entry 2017



## Age Class

	Non-Forest	0-9	10-19	20-29	30-39	40-49	50-59	60-69	70-79	80-89	90-99	100-109	110-119	120-129	130-139	140-149	150+	Uneven-Aged	Total
Aspen	0	124	0	81	84	53	0	40	74	0	0	0	0	0	0	0	0	0	456
Bare/Sparsely Vegetated	464	0	0	0	0	0	0	0	0	0	0	0	0	0	0	0	0	0	464
Cedar	0	0	0	0	0	0	0	0	0	0	5	0	0	0	0	0	0	0	5
Herbaceous Openland	28	0	0	0	0	0	0	0	0	0	0	0	0	0	0	0	0	0	28
Jack Pine	0	87	57	395	652	164	37	111	14	0	0	0	0	0	0	0	0	0	1517
Low-Density Trees	17	0	0	0	0	0	0	0	0	0	0	0	0	0	0	0	0	0	17
Lowland Aspen/Balsam Poplar	0	0	0	0	11	0	0	0	0	0	0	0	0	0	0	0	0	0	11
Lowland Shrub	28	0	0	0	0	0	0	0	0	0	0	0	0	0	0	0	0	0	28
Lowland Spruce/Fir	0	0	0	0	0	0	0	0	0	8	0	0	0	0	0	0	0	0	8
Mixed Upland Deciduous	0	0	0	0	40	0	0	21	0	8	0	0	0	0	0	0	0	0	69
Natural Mixed Pines	0	0	0	0	0	0	0	40	9	0	0	0	0	0	0	0	0	0	49
Oak	0	0	0	0	0	7	0	0	0	18	0	0	0	0	0	0	0	0	25
Planted Mixed Pines	0	0	31	0	0	0	0	0	0	0	0	0	0	0	0	0	0	0	31
Red Pine	0	0	0	0	0	0	32	213	7	10	0	0	0	0	0	0	0	0	262
Sand, Soil	1	0	0	0	0	0	0	0	0	0	0	0	0	0	0	0	0	0	1
Treed Bog	5	0	0	0	0	0	0	0	0	0	0	0	0	0	0	0	0	0	5
Upland Mixed Forest	0	18	0	0	0	63	9	0	0	0	0	0	0	0	0	0	0	0	90
Urban	40	0	0	0	0	0	0	0	0	0	0	0	0	0	0	0	0	0	40
Water	100	0	0	0	0	0	0	0	0	0	0	0	0	0	0	0	0	0	100
<b>Total</b>	<b>683</b>	<b>229</b>	<b>88</b>	<b>476</b>	<b>787</b>	<b>287</b>	<b>78</b>	<b>425</b>	<b>104</b>	<b>10</b>	<b>39</b>	<b>0</b>	<b>0</b>	<b>0</b>	<b>0</b>	<b>0</b>	<b>0</b>	<b>0</b>	<b>3206</b>



## Report 2 – Treatment Summary

Atlanta Mgt. Unit  
Year of Entry: 2017

Acres of Harvest

Compartment 63  
Total Compartment Acres: 3,206

Commercial Harvest - 0  
Harvests with Site Condition - 0  
Next Step Harvest - 0  
Habitat Cut - 164

### Cover Type by Harvest Method

	Clearcut	Selection	Patch Clearcut	Seed Tree	Shelterwood	Thinning	Overstory Removal	Salvage	Other	Total Acres
Aspen	82	0	0	0	0	0	0	0	0	82
Jack Pine	90	0	0	0	0	0	0	0	0	90
Natural Mixed Pines	41	0	0	0	0	0	0	0	0	41
Red Pine	84	0	0	0	0	0	0	0	0	84
<b>Total</b>	<b>297</b>	<b>0</b>	<b>0</b>	<b>0</b>	<b>0</b>	<b>0</b>	<b>0</b>	<b>0</b>	<b>0</b>	<b>297</b>

### Proposed and Next Step Treatments by Harvest Method

	Harvest	Site Prep	Planting	Seeding	Burning	Pesticide	Monitoring	Other	Non-Forest Mgt.	Total Acres
Current	297	0	0	0	0	153	0	11		461
Next Step	0	294	215	0	0	79	512	0	0	1100
<b>Total</b>	<b>297</b>	<b>294</b>	<b>215</b>	<b>0</b>	<b>0</b>	<b>79</b>	<b>665</b>	<b>0</b>	<b>11</b>	<b>1561</b>



S t a n d	Treatment Name	Acres	Stand CoverType	Size Density	Stand Age	BA Range	Treatment Type	Treatment Method	Cover Type Objective	Age Structure	Approval Status
1	54063001-Cut	37.8	42220 - Natural Jack Pine	Poletimber Well	62	Unspec ified	Harvest	Clearcut with Retention	42120 - Planted Jack Pine	Even-Aged	Proposal
<b>Habitat Cut: No</b>			<b>Site Condition:</b>								
<u>Prescription</u> clearcut, follow retention guidelines. use 2" spec. Chip tops, not necessary to leave 1/6-1/3 of the tops, this is a jack pine stand and does not											
<u>Specs:</u> need the extra nutrients. Use KW specs.											
<u>Next Step</u> SitePrep, Trenching; Planting, Initial Plant; Monitoring, Artificial Regen(1yr); Monitoring, Artificial Regen(3yr)											
<u>Treatments:</u>											
<u>Acceptable</u> Fully stocked stand of jack pine. Expect oak stump sprouts.											
<u>Regen:</u>											
<u>Other</u> Old next step comments:											
<u>Comment:</u>											
<u>Proposed Start Date:</u> 10/1 /2016											
7	54063007-Cut	9.1	42290 - Natural Mixed Pine	Sawtimber Well	74	81-110	Harvest	Clearcut with Retention	42110 - Planted Red Pine	Even-Aged	Proposal
<b>Habitat Cut: No</b>			<b>Site Condition:</b>								
<u>Prescription</u> clearcut, use 2" spec, chip tops for replanting. Plant Red Pine. Use KW specs.											
<u>Specs:</u>											
<u>Next Step</u> SitePrep, Trenching; Planting, Initial Plant; Monitoring, Artificial Regen(1yr); Monitoring, Artificial Regen(3yr)											
<u>Treatments:</u>											
<u>Acceptable</u> fully stocked stand red pine with a mix of oak and jack pine											
<u>Regen:</u>											
<u>Other</u> Old next step comments:											
<u>Comment:</u>											
<u>Proposed Start Date:</u> 10/1 /2016											
8	54063008- Monitor	20.3	42110 - Planted Red Pine	Sawtimber Well	67	81-110	Monitoring	Natural Regen (Re-Inventory)	4221 - Natural Red Pine	Two-Aged	Approved Proposal
<b>Habitat Cut: Yes</b>			<b>Site Condition:</b>								
<u>Prescription</u> Check regen during 2017 inventory year (YOE 2015)											
<u>Specs:</u>											
<u>Next Step</u>											
<u>Treatments:</u>											
<u>Acceptable</u> Red pine with oak											
<u>Regen:</u>											
<u>Other</u> Timber sale #54-038-07-01 cut in 2010											
<u>Comment:</u> Shelterwood Old next step comments:											
<u>Proposed Start Date:</u> 10/1 /2014											
22	54063022- Monitor	22.4	4130 - Aspen	Sapling Well	7	Immatur e	Monitoring	Natural Regen (Re-Inventory)	413 - Aspen	Even-Aged	Approved Proposal
<b>Habitat Cut: Yes</b>			<b>Site Condition: Long-Term Retention</b>								
<u>Prescription</u> check regen during 2015 inventory YOE17.											
<u>Specs:</u>											
<u>Next Step</u>											
<u>Treatments:</u>											
<u>Acceptable</u> Fully stocked stand of aspen											
<u>Regen:</u>											
<u>Other</u> Old next step comments:											
<u>Comment:</u>											
<u>Proposed Start Date:</u> 10/1 /2014											



S t a n d	Treatment Name	Acres	Stand CoverType	Size Density	Stand Age	BA Range	Treatment Type	Treatment Method	Cover Type Objective	Age Structure	Approval Status
24	54063024-Monitor	9.5	42111 - Planted Red Pine, Mixed Deciduous	Sawtimber Medium	82	51-80	Monitoring	Natural Regen (Re-Inventory)	4122 - Oak, Pine	Even-Aged	Approved Proposal

**Habitat Cut: Yes**      **Site Condition: Shelterwood/Seed Source**

Prescription Check regen during inventory 2015 for YOE17.

Specs:

Next Step

Treatments:

Acceptable Mix of red/jack pine and oak

Regen:

Other Old next step comments:

Comment:

Proposed Start Date: 10/1 /2014

30	54063030-Cut	19.9	42220 - Natural Jack Pine	Poletimber Well	67	Unspecified	Harvest	Clearcut with Retention	4212 - Planted Jack Pine	Even-Aged	Proposal
----	--------------	------	---------------------------	-----------------	----	-------------	---------	-------------------------	--------------------------	-----------	----------

**Habitat Cut: No**      **Site Condition:**

Prescription clearcut. retention is left in a buffer along the flooding and L0 type. use 2"spec and chip tops. replant to jack pine. Use KW specs.

Specs:

Next Step SitePrep, Trenching; Planting, Initial Plant; Monitoring, Artificial Regen(1yr); Monitoring, Artificial Regen(3yr)

Treatments:

Acceptable fully stocked stand of jack pine. expect some oak regeneration

Regen:

Other Possible eagle nest/activity in the area, check database before setting up the sale. Old next step comments:

Comment:

Proposed Start Date: 10/1 /2016

31	54063031-Cut	4.8	42220 - Natural Jack Pine	Poletimber Medium	59	Unspecified	Harvest	Clearcut with Retention	4212 - Planted Jack Pine	Even-Aged	Proposal
----	--------------	-----	---------------------------	-------------------	----	-------------	---------	-------------------------	--------------------------	-----------	----------

**Habitat Cut: No**      **Site Condition:**

Prescription clearcut, retention is already excluded in a buffer along the flooding. use 2" spec. chip tops. replant to jack pine. Use KW specs.

Specs:

Next Step SitePrep, Trenching; Planting, Initial Plant; Monitoring, Artificial Regen(1yr); Monitoring, Artificial Regen(3yr)

Treatments:

Acceptable medium to fully stocked stand of jack pine with a mix of oak.

Regen:

Other Possible eagle nest/activity in the area, check database before setting up the sale. Old next step comments:

Comment:

Proposed Start Date: 10/1 /2016

33	54063033-Monitor	45.0	4131 - Aspen, Oak	Sapling Well	7	Immature	Monitoring	Natural Regen (Re-Inventory)	413 - Aspen	Even-Aged	Approved Proposal
----	------------------	------	-------------------	--------------	---	----------	------------	------------------------------	-------------	-----------	-------------------

**Habitat Cut: Yes**      **Site Condition:**

Prescription check regen in 2015 inventory YOE17

Specs:

Next Step

Treatments:

Acceptable Aspen with mix of oak, red maple, and pine

Regen:

Other Old next step comments:

Comment:

Proposed Start Date: 10/1 /2014





S t a n d	Treatment Name	Acres	Stand CoverType	Size Density	Stand Age	BA Range	Treatment Type	Treatment Method	Cover Type Objective	Age Structure	Approval Status
35	54063035-Cut	27.6	42220 - Natural Jack Pine	Poletimber Well	66	Unspec ified	Harvest	Clearcut with Retention	4212 - Planted Jack Pine	Even-Aged	Proposal

**Habitat Cut: No****Site Condition:**

Prescription clearcut. retention is already excluded from the treatment in a buffer along the flooding and the L0 type. use 2" spec and chip tops. replant to jack  
Specs: pine. Use KW specs.

Next Step SitePrep, Trenching; Planting, Initial Plant; Monitoring, Artificial Regen(1yr); Monitoring, Artificial Regen(3yr)  
Treatments:

Acceptable fully stocked stand of jack pine with a mix of oak  
Regen:

Other Old next step comments:  
Comment:

Proposed Start Date: 10/1 /2016

36	54063036-Cut	32.2	42290 - Natural Mixed Pine	Poletimber Well	67	51-80	Harvest	Clearcut with Retention	42110 - Planted Red Pine	Even-Aged	Proposal
----	--------------	------	-------------------------------	--------------------	----	-------	---------	----------------------------	-----------------------------	-----------	----------

**Habitat Cut: No****Site Condition:**

Prescription clearcut. retention is already excluded from the treatment in a buffer along the flooding. use 2" spec and chip tops. replant red pine. Use KW  
Specs: specs.

Next Step SitePrep, Trenching; Planting, Initial Plant; Monitoring, Artificial Regen(1yr); Monitoring, Artificial Regen(3yr)  
Treatments:

Acceptable fully stocked red pine stand with a mix of jack pine and oak  
Regen:

Other Possible Osprey nest/activity in the area, check database before setting up the sale. Old next step comments:  
Comment:

Proposed Start Date: 10/1 /2016

38	54063038-Cut	4.5	42110 - Planted Red Pine	Poletimber Well	59	111- 140	Harvest	Clearcut	42110 - Planted Red Pine	Even-Aged	Proposal
----	--------------	-----	-----------------------------	--------------------	----	-------------	---------	----------	-----------------------------	-----------	----------

**Habitat Cut: No****Site Condition:**

Prescription clearcut, no retention due to small stand size and adequate retention of similar stand 36 along the flooding. also, retention on the slopes would  
Specs: prevent follow up trenching operations. use 2" spec and chip tops. plant red pine along with stand 36. Use KW specs.

Next Step SitePrep, Trenching; Planting, Initial Plant; Monitoring, Artificial Regen(1yr); Monitoring, Artificial Regen(3yr)  
Treatments:

Acceptable fully stocked red pine stand with and small component of jack pine, and mixed deciduous.  
Regen:

Other Possible Osprey nest/activity in the area, check database before setting up the sale. Old next step comments:  
Comment:

Proposed Start Date: 10/1 /2016

43	54063043- Monitor	7.8	4131 - Aspen, Oak	Sapling Well	6	Immatu re	Monitoring	Natural Regen (Re-Inventory)	413 - Aspen	Even-Aged	Approved Proposal
----	----------------------	-----	-------------------	-----------------	---	--------------	------------	---------------------------------	-------------	-----------	----------------------

**Habitat Cut: Yes****Site Condition:**

Prescription check regen during next inventory 2015 YO E17  
Specs:

Next Step  
Treatments:

Acceptable Aspen with mix of oak, red maple, and pine.  
Regen:

Other Old next step comments:  
Comment:

Proposed Start Date: 10/1 /2014



S t a n d	Treatment Name	Acres	Stand CoverType	Size Density	Stand Age	BA Range	Treatment Type	Treatment Method	Cover Type Objective	Age Structure	Approval Status
46	54063046-Monitor	12.9	4131 - Aspen, Oak	Sapling Well	6	Immature	Monitoring	Natural Regen (Re-Inventory)	413 - Aspen	Even-Aged	Approved Proposal

**Habitat Cut: Yes****Site Condition:**

Prescription check regen in 2015 inventory YO E17

Specs:

Next Step

Treatments:

Acceptable Aspen with a mix of red maple, oak.

Regen:

Other Old next step comments:

Comment:

Proposed Start Date: 10/1 /2014

51	54063051-Monitor	7.1	4131 - Aspen, Oak	Sapling Well	6	Immature	Monitoring	Natural Regen (Re-Inventory)	413 - Aspen	Even-Aged	Approved Proposal
----	------------------	-----	-------------------	-----------------	---	----------	------------	---------------------------------	-------------	-----------	----------------------

**Habitat Cut: Yes****Site Condition:**

Prescription check regen during inventory 2015 YO E17.

Specs:

Next Step

Treatments:

Acceptable Aspen with mix of oak, red maple, and pine

Regen:

Other Old next step comments:

Comment:

Proposed Start Date: 10/1 /2014

55	54063055-NF	1.3	3102 - Grass	Nonstocked		Unspecified	NonForestMgt	Other - Specify	310 - Herbaceous Openland		Proposal
----	-------------	-----	--------------	------------	--	-------------	--------------	-----------------	---------------------------------	--	----------

**Habitat Cut: Yes****Site Condition:**

Prescription Plant to food and cover crops for wildlife or maintain grasses using mechanical methods or fire as funding allows.

Specs:

Next Step

Treatments:

Acceptable

Regen:

Other Old next step comments:

Comment:

Proposed Start Date: 5 /1 /2015

57	54063057-Cut	39.8	4131 - Aspen, Oak	Poletimber Well	66	Unspecified	Harvest	Clearcut with Retention	413 - Aspen	Even-Aged	Proposal
----	--------------	------	-------------------	--------------------	----	-------------	---------	----------------------------	-------------	-----------	----------

**Habitat Cut: No****Site Condition:**

Prescription Clearcut, cut all trees 2" dbh and larger. leave 3% retention in one pocket. Use grouse drumming log specs.

Specs:

Next Step

Treatments:

Acceptable Fully stocked stand of aspen with a mix of red oak, red maple, and mixed pine present.

Regen:

Other Old next step comments:

Comment:

Proposed Start Date: 10/1 /2016



S t a n d	Treatment Name	Acres	Stand CoverType	Size Density	Stand Age	BA Range	Treatment Type	Treatment Method	Cover Type Objective	Age Structure	Approval Status
65	54063065-NF	1.6	3102 - Grass	Nonstocked		Unspec ified	NonForestMgt	Other - Specify	310 - Herbaceous Openland		Proposal

**Habitat Cut: Yes**

**Site Condition:**

Prescription Plant to food and cover crops for wildlife or maintain grasses using mechanical methods or fire as funding allows.

Specs:

Next Step

Treatments:

Acceptable

Regen:

Other Old next step comments:

Comment:

Proposed Start Date: 5 /1 /2015

66	54063066-NF	1.7	3102 - Grass	Nonstocked		Unspec ified	NonForestMgt	Other - Specify	310 - Herbaceous Openland		Proposal
----	-------------	-----	--------------	------------	--	--------------	--------------	-----------------	---------------------------	--	----------

**Habitat Cut: Yes**

**Site Condition:**

Prescription Plant to food and cover crops for wildlife or maintain grasses using mechanical methods or fire as funding allows.

Specs:

Next Step

Treatments:

Acceptable

Regen:

Other Old next step comments:

Comment:

Proposed Start Date: 5 /1 /2015

67	54063067-Monitor	28.3	4130 - Aspen	Sapling Well	6	Immature	Monitoring	Natural Regen (Re-Inventory)	413 - Aspen	Even-Aged	Approved Proposal
----	------------------	------	--------------	--------------	---	----------	------------	------------------------------	-------------	-----------	-------------------

**Habitat Cut: Yes**

**Site Condition:**

Prescription check regen during inventory 2015 YO E17.

Specs:

Next Step

Treatments:

Acceptable aspen with mix of oak and red maple.

Regen:

Other Old next step comments:

Comment:

Proposed Start Date: 10/1 /2014

69	54063069-NF	1.9	3102 - Grass	Nonstocked		Unspec ified	NonForestMgt	Other - Specify	310 - Herbaceous Openland		Proposal
----	-------------	-----	--------------	------------	--	--------------	--------------	-----------------	---------------------------	--	----------

**Habitat Cut: Yes**

**Site Condition:**

Prescription Plant to food and cover crops for wildlife or maintain grasses using mechanical methods or fire as funding allows.

Specs:

Next Step

Treatments:

Acceptable

Regen:

Other Old next step comments:

Comment:

Proposed Start Date: 5 /1 /2015



S t a n d	Treatment Name	Acres	Stand CoverType	Size Density	Stand Age	BA Range	Treatment Type	Treatment Method	Cover Type Objective	Age Structure	Approval Status
70	54063070-NF	2.7	3102 - Grass	Nonstocked		Unspec ified	NonForestMgt	Other - Specify	310 - Herbaceous Openland		Proposal

**Habitat Cut: Yes****Site Condition:**

Prescription Plant to food and cover crops for wildlife or maintain grasses using mechanical methods or fire as funding allows.

Specs:

Next Step

Treatments:

Acceptable

Regen:

Other Old next step comments:

Comment:

Proposed Start Date: 5 /1 /2015

72	54063072-NF	1.4	3102 - Grass	Nonstocked		Unspec ified	NonForestMgt	Other - Specify	310 - Herbaceous Openland		Proposal
----	-------------	-----	--------------	------------	--	-----------------	--------------	-----------------	---------------------------------	--	----------

**Habitat Cut: Yes****Site Condition:**

Prescription Plant to food and cover crops for wildlife or maintain grasses using mechanical methods or fire as funding allows.

Specs:

Next Step

Treatments:

Acceptable

Regen:

Other Old next step comments:

Comment:

Proposed Start Date: 5 /1 /2015

77	54063077-Cut	79.1	42210 - Natural Red Pine	Sawtimber Medium	67	51-80	Harvest	Clearcut with Retention	4211 - Planted Red Pine	Even-Aged	Proposal
----	--------------	------	-----------------------------	---------------------	----	-------	---------	----------------------------	----------------------------	-----------	----------

**Habitat Cut: No****Site Condition:**

Prescription clearcut, cut all trees 2" dbh and larger, chip tops, low stumps, replant to red pine.

Specs:

Next Step

SitePrep, Roller Chopping; SitePrep, Trenching; Planting, Initial Plant; Monitoring, Artificial Regen(1yr); Pesticide, Aerial

Treatments:

Acceptable Fully stocked stand of red pine with small component of red maple and red oak

Regen:

Other Old next step comments:

Comment:

Proposed Start Date: 10/1 /2016

81	54063081-Cut	42.0	4131 - Aspen, Oak	Poletimber Well	79	Unspec ified	Harvest	Clearcut with Retention	413 - Aspen	Even-Aged	Proposal
----	--------------	------	-------------------	--------------------	----	-----------------	---------	----------------------------	-------------	-----------	----------

**Habitat Cut: No****Site Condition:**

Prescription Clearcut, cut all trees 2" dbh and larger. Move start date up for 2015 YOY to cut with stand 72 in compartment 062. Use grouse drumming log

Specs: specs.

Next Step

Treatments:

Acceptable Fully stocked stand of aspen with a mix of oak, maple, and pine may be present

Regen:

Other Old next step comments:

Comment:

Proposed Start Date: 10/1 /2014

**Total Treatment  
Acreage Proposed: 460.8**

Dominant Site Conditions

	3B	3D	3J	5B	5C	5E
Aspen					32	4
Bare/Sparsely Vegetated						17
Cedar						
Herbaceous Openland						
Jack Pine	11	14	30		16	1
Low-Density Trees					0	
Lowland Aspen/Balsam Poplar						
Lowland Shrub					0	
Lowland Spruce/Fir						
Mixed Upland Deciduous					8	
Natural Mixed Pines			7			
Oak					18	
Planted Mixed Pines						
Red Pine				10		
Sand, Soil						
Treed Bog						
Upland Mixed Forest						
Urban						
Water						
Total Forested Acres	11	14	37	10	74	22
Relative Percent						

\*Due to limitations in the current Site Conditions Analysis tool, all nonforested acres are considered available. Future development will enable analysis of nonforested types.

Site No.	Dominant Site Availability	Dominant Site Condition	Acres	Other Site Condition	Other Site Condition	Other Site Condition	Other Site Condition
1	Unavailable	3B: Threatened, endangered, and special concern species/communities	7	Unspecified	Unspecified	Unspecified	Unspecified
Comments:							

## Report 5 – Site Conditions

Atlanta Mgt. Unit  
Chad Fate : Examiner

Compartment: 63  
Year of Entry: 2017

2	Unavailable	3J: Water quality / BMPs (stream, river, or lake)	14	5E: Long-Term Retention	Unspecified	Unspecified	Unspecified
Comments:							
3	Unavailable	5E: Long-Term Retention	7	Unspecified	Unspecified	Unspecified	Unspecified
Comments:							
4	Unavailable	5E: Long-Term Retention	1	Unspecified	Unspecified	Unspecified	Unspecified
Comments:							
5	Unavailable	5E: Long-Term Retention	2	Unspecified	Unspecified	Unspecified	Unspecified
Comments:							
6	Unavailable	5E: Long-Term Retention	1	Unspecified	Unspecified	Unspecified	Unspecified
Comments:							
7	Unavailable	3D: Recreational / Scenic values	14	Unspecified	Unspecified	Unspecified	Unspecified
Comments:							
8	Unavailable	5E: Long-Term Retention	1	Unspecified	Unspecified	Unspecified	Unspecified
Comments:							
9	Unavailable	5E: Long-Term Retention	0	Unspecified	Unspecified	Unspecified	Unspecified
Comments:							

## Report 5 – Site Conditions

Atlanta Mgt. Unit  
Chad Fate : Examiner

Compartment: 63  
Year of Entry: 2017

10	Unavailable	5E: Long-Term Retention	2	Unspecified	Unspecified	Unspecified	Unspecified
<b>Comments:</b>							
11	Unavailable	5E: Long-Term Retention	1	Unspecified	Unspecified	Unspecified	Unspecified
<b>Comments:</b>							
12	Unavailable	5E: Long-Term Retention	2	Unspecified	Unspecified	Unspecified	Unspecified
<b>Comments:</b>							
13	Unavailable	5E: Long-Term Retention	1	Unspecified	Unspecified	Unspecified	Unspecified
<b>Comments:</b>							
14	Available	5C: Delay treatment for age/size class diversity or exceptional site quality	32	Unspecified	Unspecified	Unspecified	Unspecified
<b>Comments:</b>							
15	Unavailable	5E: Long-Term Retention	0	Unspecified	Unspecified	Unspecified	Unspecified
<b>Comments:</b>							
16	Unavailable	5E: Long-Term Retention	1	Unspecified	Unspecified	Unspecified	Unspecified
<b>Comments:</b>							
17	Unavailable	5E: Long-Term Retention	1	Unspecified	Unspecified	Unspecified	Unspecified
<b>Comments:</b>							

## Report 5 – Site Conditions

Atlanta Mgt. Unit  
Chad Fate : Examiner

Compartment: 63  
Year of Entry: 2017

18	Unavailable	5E: Long-Term Retention	0	Unspecified	Unspecified	Unspecified	Unspecified
<b>Comments:</b>							
19	Unavailable	5E: Long-Term Retention	0	Unspecified	Unspecified	Unspecified	Unspecified
<b>Comments:</b>							
20	Unavailable	5E: Long-Term Retention	0	Unspecified	Unspecified	Unspecified	Unspecified
<b>Comments:</b>							
21	Unavailable	3B: Threatened, endangered, and special concern species/communities	4	Unspecified	Unspecified	Unspecified	Unspecified
<b>Comments:</b>							
22	Unavailable	5E: Long-Term Retention	2	Unspecified	Unspecified	Unspecified	Unspecified
<b>Comments:</b>							
23	Available	5B: Maintain for regeneration purposes	10	5C: Delay treatment for age/size class diversity or exceptional site quality	Unspecified	Unspecified	Unspecified
<b>Comments:</b>							



## Report 5 – Site Conditions

Atlanta Mgt. Unit  
Chad Fate : Examiner

Compartment: 63  
Year of Entry: 2017

24	Available	5C: Delay treatment for age/size class diversity or exceptional site quality	8	5B: Maintain for regeneration purposes	Unspecified	Unspecified	Unspecified
<b>Comments:</b>							
25	Available	5C: Delay treatment for age/size class diversity or exceptional site quality	16	Unspecified	Unspecified	Unspecified	Unspecified
<b>Comments:</b>							
26	Unavailable	5E: Long-Term Retention	0	Unspecified	Unspecified	Unspecified	Unspecified
<b>Comments:</b>							
28	Unavailable	3J: Water quality / BMPs (stream, river, or lake)	11	5E: Long-Term Retention	3D: Recreational / Scenic values	Unspecified	Unspecified
<b>Comments:</b>							
29	Unavailable	3J: Water quality / BMPs (stream, river, or lake)	12	5E: Long-Term Retention	3D: Recreational / Scenic values	Unspecified	Unspecified
<b>Comments:</b>							
86	Unavailable	2G: Too wet (sensitive soils, does not include access issues)	8	Unspecified	Unspecified	Unspecified	Unspecified
<b>Comments:</b>							

# Report 5 – Site Conditions

Atlanta Mgt. Unit  
Chad Fate : Examiner

Compartment: 63  
Year of Entry: 2017

88	Available	5C: Delay treatment for age/size class diversity or exceptional site quality	18	Unspecified	Unspecified	Unspecified	Unspecified
<b>Comments:</b>							

Mgt. Unit

Compartment: #Type!

Year of Entry:



## Report 6 – PROPOSED SPECIAL CONSERVATION AREA\* (SCA) DETAILS

\* This is a partial list of SCAs for this compartment. Not included are those areas identified under other Department initiatives (Natural Rivers, Deer Wintering Areas, etc.). Those will be identified in separate, future map and report products.

SCA Name	SCA Category	Detail Type	Recommendation	Acres
<b>Comments</b>				

**Report 7 – EXISTING SPECIAL CONSERVATION AREA DETAILS**

\* This is a list of SCA's for this compartment along with a 1/4 mile buffer surrounding the compartment. Refer to the Special Conservation Area Map for locations of the below listed Conservation Areas.

ERA = Ecological Reference Area  
 HCVA = High Conservation Value Area  
 SCA = Special Conservation Area

Conservation Area	Type	Description
SCA	Cold Water Lake	A coldwater lake has temperature and dissolved oxygen conditions that allow naturally-reproduced or stocked trout populations and those of other coldwater fish species to persist from year to year. Suitable conditions for coldwater fishes may occur in Michigan lakes if they are relatively deep, have substantial groundwater inflows, or are located in colder (northern) areas of the state. Such lakes are established by Director's action and designated as trout resources by Fisheries Order 200.
SCA	Cold Water Stream	A coldwater stream has temperature and dissolved oxygen conditions that allow naturally-reproduced or stocked trout populations and those of other coldwater fish species (e.g., slimy sculpin) to persist from year to year. Coldwater streams in Michigan typically provide these conditions due to substantial contributions of groundwater to their stream flows. Such streams are established by Director's action and designated as trout resources by Fisheries Order 210.
SCA	Riparian Area	A transitional area between aquatic and terrestrial ecosystems in which the terrestrial ecosystem influences the aquatic ecosystem and vice-versa. Because of the unique conditions adjacent to lakes, streams and open water wetlands, riparian areas harbor a high diversity of plants and wildlife. Riparian communities are ecologically and socially significant in their effects on water quality and quantity, as well as aesthetics, habitat, bank stability, timber production, and their contribution to overall biodiversity.
HCVA	Designated Critical Habitat	Critical habitat areas are established via a consultative and cooperative process between the DNR and the U.S. Fish and Wildlife service for the recovery of threatened and endangered species, as governed by Part 365, Endangered Species Protection, of the Natural Resources and Environmental Protection Act, 1994 PA 451, and the Federal Endangered Species Act of 1973. This is an active program, with proposed species plans in various stages of review. As of now only two exist, Kirtland Warbler Habitat and Piping Plover Habitat.

S  
t  
a  
n  
d

## Atlanta Mgt. Unit

## Report 8 – Forested Stands

Compartment: 63  
Year of Entry: 2017

	Level 4 Cover Type	Size Density	Acres	Stand Age	BA Range	General Comments:
1	42220 - Natural Jack Pine	Poletimber Well	37.8	62	Unspecified	Held for visual concerns while establishing the stand to the north. Consider clearcutting and re-planting now that the adjacent stands have regenerated.
2	4310 - Pine, Oak Mix	Poletimber Well	9.0	53	51-80	
3	4310 - Pine, Oak Mix	Poletimber Well	62.8	40	Unspecified	Good mix of jack pine and oak. Less dense in the middle of the stand.
5	42120 - Planted Jack Pine	Poletimber Well	112.6	32	Unspecified	OPIC - FMD: Warbler Weave
6	42120 - Planted Jack Pine	Poletimber Medium	8.3	37	Unspecified	scattered oak, and some small openings
7	42290 - Natural Mixed Pine	Sawtimber Well	9.1	74	81-110	held for visual concerns in the past. Now surrounding stands have been re-established, consider cutting.
8	42110 - Planted Red Pine	Sawtimber Well	20.3	67	81-110	Clear Pit Pine 54-017-07-01 was cut in spring of 08. thinning removed all jack pine, aspen, and some oak and left all red pine.
9	4310 - Pine, Oak Mix	Sapling Well	18.3	7	Immature	Stand was cut in Summer 2008. Part of STP Complex 54-038-07-01 left oak and red pine for visual from original stand.
10	42141 - Planted Mixed Pine, Mixed Deciduous	Sapling Well	31.3	17	Immature	Scattered mature oak with natural jack pine and oak regeneration along with planted red pine (planted in 1998)
11	42120 - Planted Jack Pine	Poletimber Well	27.8	32	Unspecified	OPIC - FMD: Warbler Weave
12	4129 - Mixed Oak	Poletimber Well	17.9	92	81-110	Stand was treated approx. 30 yrs ago
13	42121 - Planted Jack Pine, Mixed Deciduous	Sapling Well	4.3	6	Immature	Stand was cut in Summer 2008. Part of STP Complex 54-038-07-01
14	42110 - Planted Red Pine	Sawtimber Well	7.1	59	81-110	Stand was thinned in Summer 2008. Part of STP Complex 54-038-07-01
15	42120 - Planted Jack Pine	Sapling Well	188.0	20	Immature	
17	4191 - Mixed Upland Deciduous with Conifer	Poletimber Well	9.4	35	Unspecified	
19	42121 - Planted Jack Pine, Mixed Deciduous	Sapling Well	31.9	6	Immature	Stand was cut in Summer 2008. Part of STP Complex 54-038-07-01 Planted in 2009



Stand	Level 4 Cover Type	Size Density	Acres	Stand Age	BA Range	General Comments:
21	4199 - Other Mixed Upland Deciduous	Poletimber Well	31.0	32	51-80	2 aged stand. Oak stand was shelterwooded in 1983 - little to no oak regen resulting from the cut. Full density of red maple and aspen regenerated.
22	4130 - Aspen	Sapling Well	22.4	7	Immature	Sale cut in summer 2008. 54-031-07-01. Tomahawk's West Aspen
23	4130 - Aspen	Sapling Well	5.7	32	Immature	stand was cut in 1983
24	42111 - Planted Red Pine, Mixed Deciduous	Sawtimber Medium	9.5	82	51-80	Stand was thinned in Summer 2008, jack pine was removed and red pine and red oak were thinned. Part of STP Complex 54-038-07-01
25	4123 - Red Oak	Poletimber Well	7.1	41	51-80	
26	6111 - Lowland Balsam Poplar	Sapling Well	10.7	35	Unspecified	
27	42220 - Natural Jack Pine	Poletimber Well	29.7	51	Unspecified	Stand is very variable in diameters and has pockets of younger and older trees. The northern half of the stand is retention along the Tomahawk Flooding and the southern half includes slopes along the lowland P type.
29	42120 - Planted Jack Pine	Sapling Well	57.2	15	Immature	small fire in summer 2004.
30	42220 - Natural Jack Pine	Poletimber Well	33.2	67	Unspecified	look at possibly treating stand 2 in compartment 062 at the same time as this stand. Old OIPC notes suggested to treat this stand with compartment 062 in YOE 2013. However, treatments were not prescribed at that time.
31	42220 - Natural Jack Pine	Poletimber Medium	7.5	59	Unspecified	tree diameters and ages are variable throughout the stand. there are some open areas along the flooding.
33	4131 - Aspen, Oak	Sapling Well	45.0	7	Immature	
35	42220 - Natural Jack Pine	Poletimber Well	40.1	66	Unspecified	
36	42290 - Natural Mixed Pine	Poletimber Well	39.8	67	51-80	
37	42110 - Planted Red Pine	Poletimber Well	19.9	59	111-140	Stand was 3rd row thinned in Summer 2008. Part of STP Complex 54-038-07-01
38	42110 - Planted Red Pine	Poletimber Well	4.5	59	111-140	Unthinned



	Level 4 Cover Type	Size Density	Acres	Stand Age	BA Range	General Comments:
39	42121 - Planted Jack Pine, Mixed Deciduous	Sapling Well	11.8	6	Immature	Stand was cut in Summer 2008. Part of STP Complex 54-038-07-01 Planted in 2009. some aspen along the west edge.
40	42120 - Planted Jack Pine	Sapling Well	332.7	33	Unspecified	Few scattered mature oak.
41	42120 - Planted Jack Pine	Sapling Well	108.5	40	Unspecified	
42	4130 - Aspen	Poletimber Well	7.4	33	Unspecified	
43	4131 - Aspen, Oak	Sapling Well	7.8	6	Immature	Some scattered red pine and oaks. Stand cut in spring of 2009. 54-028-07-01 Chocolate Aspen.
44	42120 - Planted Jack Pine	Poletimber Well	27.3	33	Unspecified	Jack pine is right on the edge between non-merchantable and merchantable.
45	4130 - Aspen	Poletimber Well	50.5	32	Unspecified	Stand is right on the edge of non-merchantable becoming merchantable.
46	4131 - Aspen, Oak	Sapling Well	12.9	6	Immature	Few scattered log sized oak. Stand cut in spring 2009. 54-028-07-01 Chocolate Aspen.
47	42121 - Planted Jack Pine, Mixed Deciduous	Sapling Well	38.8	5	Immature	Stand was cut in Spring 2010. Part of STP Complex 54-038-07-01
48	4130 - Aspen	Sapling Well	81.4	26	Immature	
49	4199 - Other Mixed Upland Deciduous	Poletimber Well	7.8	90	81-110	Stand was cut in 1989 but all oak was left behind. understory is mostly red maple and aspen.
50	6120 - Lowland Cedar	Poletimber Well	4.9	96	141-170	
51	4131 - Aspen, Oak	Sapling Well	7.1	6	Immature	
57	4131 - Aspen, Oak	Poletimber Well	39.8	66	Unspecified	
59	42120 - Planted Jack Pine	Poletimber Well	5.9	40	Unspecified	
60	42120 - Planted Jack Pine	Sapling Medium	2.3	45	Unspecified	
62	42220 - Natural Jack Pine	Poletimber Well	13.5	76	Unspecified	



	Level 4 Cover Type	Size Density	Acres	Stand Age	BA Range	General Comments:
63	42120 - Planted Jack Pine	Poletimber Well	144.2	34	Unspecified	
64	4130 - Aspen	Poletimber Well	32.3	78	Unspecified	Large clearcut to the south and east, follow green up guidelines for any future treatments. maintain for visual along M33 until surrounding stand heights are approx. 10 ft or more. heavier jack pine along M-33 and more red pine along the old clay pits.
67	4130 - Aspen	Sapling Well	28.3	6	Immature	Stand cut in spring 2009. 54-028-07-01 Chocolate Aspen.
68	4130 - Aspen	Poletimber Well	20.7	36	Unspecified	
73	42120 - Planted Jack Pine	Sapling Well	207.1	20	Immature	OPIC - FMD: Warbler Weave
75	42220 - Natural Jack Pine	Poletimber Well	10.8	47	Unspecified	Retain for visual along M-33 until surrounding stands are above 10 ft tall.
77	42210 - Natural Red Pine	Sawtimber Medium	193.3	67	51-80	cut 2 entries ago and removed everything except red pine and red oak
78	4199 - Other Mixed Upland Deciduous	Poletimber Well	20.8	67	81-110	OPIC - FMD: Steep hill along clear cuts.
81	4131 - Aspen, Oak	Poletimber Well	42.0	79	Unspecified	hold for visual with large clearcut to the west.
82	4131 - Aspen, Oak	Poletimber Well	52.6	45	Unspecified	
83	42120 - Planted Jack Pine	Poletimber Well	6.8	45	Unspecified	stand was left as retention from original parent stand.
84	42221 - Natural Jack Pine, Mixed Deciduous	Poletimber Well	30.1	47	Unspecified	aspen pocket on north end
86	6122 - Black Spruce	Poletimber Well	7.6	92	111-140	
87	42210 - Natural Red Pine	Sawtimber Well	7.3	76	111-140	





Stand	Cover Type	Acres	Managed Site	General Comments:
4	330 - Low-Density Trees	2.1	No	
16	760 - Non-stocked Forest	463.6		Stand was cut as part of sale #54-021-10-01 "Little Group Jack." Stand was clearcut 05/2012 and is trenched and planted back to jack pine.
18	122 - Road/Parking Lot	13.9	No	OPIC - FMD: Power Line, Stand 111 has ORV problems
20	330 - Low-Density Trees	1.4		
28	510- Water (OI)	99.5	No	OPIC - FMD: Tomahawk Creek Flooding. Standing dead timber to south end. Purple Loosestrife around entire edge of lake. Stand 19 and 20 are scheduled for a final harvest/shelterwood cut of jack pine or oak, along the south shoreline of Tomahawk Flooding. Fisheries Division asks for a 25 foot cut free zone or selective cut inward from the lake shoreline. This is to provide a stable riparian zone, and to encourage the natural recruitment of woody debris to the flooding/lake. The flooding currently has a healthy panfish, largemouth bass, and northern pike population and in-lake woody debris is an important cover type.
32	6229 - Mixed lowland shrub	16.5	No	OPIC - FMD: OI Stand Year Origin was
34	3102 - Grass	13.0	No	power line. ORV problems in places
52	3102 - Grass	2.1	No	
53	629 - Mixed non-forested wetland	2.9	No	Low area filling in with balsam poplar and aspen. ORV Scramble area. Received Variance (06/05/08 to plant jack pine in portions of this stand to control ORV's.
54	3102 - Grass	2.3	No	
55	3102 - Grass	1.3	No	
56	122 - Road/Parking Lot	6.9	No	OPIC - FMD: Clay Pit Road
58	122 - Road/Parking Lot	13.2	No	OPIC - FMD: Millersburg Road
61	122 - Road/Parking Lot	3.1	No	OPIC - FMD: Millersburg Road
65	3102 - Grass	1.6	No	
66	3102 - Grass	1.7	No	



Stand	Cover Type	Acres	Managed Site	General Comments:
69	3102 - Grass	1.9	No	
70	3102 - Grass	2.7	No	
71	330 - Low-Density Trees	2.8	No	
72	3102 - Grass	1.4	No	
74	710 - Sand, Soil	1.3	No	old clay pit
76	330 - Low-Density Trees	10.5	No	old gravel pit, ORV scramble area
79	122 - Road/Parking Lot	3.4	No	OPIC - FMD: Tower Road
80	6224 - Treed Bog	5.1	No	jack pine and black spruce on a bog.
85	6229 - Mixed lowland shrub	8.5	No	