



Compartment Review Presentation

Gwinn Forest Management Unit

Compartment 32031

Entry Year 2017

Acreage: 766

County Marquette

Management Area: Sands Plains

Revision Date: 2015-07-07

Stand Examiner: Ben Travis

Legal Description:

T45N R25W Sections 20, 21, 22, 28, 30

Identified Planning Goals:

Planning will focus on integrated timber management, forest recreation, fisheries management, and wildlife habitat management. Increasing public access is a high priority. Forest road maintenance, trespass incidents, forest regeneration, forest health, forest fire control, stream crossings, water quality, and any resource damage issues are critical assessments considered during the forest mapping, inventory, public comment, and forest management planning processes.

Soil and topography:

Mainly flat to rolling relief. There are some steeper slopes along the Escanaba River. Soils include: Sundog silt loam, Rubicon sand, Garlic-Fence complex, Pelissier gravelly sandy loam, Karlin sandy loam, Pence fine sandy loam, Carbondale and Tawas soils, Greenwood and Dawson soils, Farquar gravelly sandy loam, Tawas-Deford mucks, and Evart-Pelkie-Sturgeon complex.

Ownership Patterns, Development, and Land Use in and Around the Compartment:

This compartment is broken into 4 separate blocks. This state land is situated quite close around the village of Gwinn. The eastern block is the largest piece and has Co Rd 557 and Slough Lake Rd running through it. A large subdivision is located to the immediate south-west of this block. A powerline ROW extends along the entire south boundary. Marquette county forest property and private lands are adjacent to this block. The north-central block is a little over 40 acres, and encompasses the Gwinn DNR field office and a small gravel pit. The western block has Serenity Drive, Knutson Road, Co Rd 557, a powerline ROW, and the State snowmobile trail extending through it. It is adjacent to several businesses and small private parcels. The state boat launch on Big Shag Lake is located just to west of this block. The southern block has very poor access as surrounded by small private parcels. it is adjacent to the Escanaba River. It is located to the east of Muehrcke Road.

Unique Natural Features:

Archeological, Historical, and Cultural Features:

Special Management Designations or Considerations:

Watershed and Fisheries Considerations:

Half-Way Creek, Escanaba River, and Small creek to east of DNR office.

Wildlife Habitat Considerations:

Compartment 31 is found within the Sands Plains Management Area; on an Outwash Plain in central Marquette County. The dominant Natural Communities are dry mesic northern forests and dry northern forests. Wildlife considerations in the Sands Plains Management Area include increasing stand size and striving to accommodate many species associated with xeric forest habitat such as Kirtland's warbler, upland sandpiper, black backed woodpecker, eastern bluebird, and spruce grouse. Wildlife management issues in the management area are: large open land complexes; habitat fragmentation; mature forest (jack pine, black and white spruce and tamarack); and early successional forest.

The following have been identified as featured species for the Sands Plains Management Area: Kirtland's warbler, spruce grouse, and upland sandpiper.

Mineral Resource and Development Concerns and/or Restrictions

Sections 20 - 22, 28, & 30, T45N R25W, Marquette County

Surface sediments consist of glacial outwash sand and gravel and postglacial alluvium, medium-textured till, and minor peat and muck. The glacial drift thickness varies between 100 and 200 feet. Archean granite/gneiss and the Proterozoic Michigamme Formation with associated Bijiki iron formation subcrop below the glacial drift. The Bijiki has been mined for iron in this area and the granite/gneiss has dimension stone characteristics in some areas. There are gravel pits in the area and potential should be good on the uplands. Abandoned iron mines are located in this area and the economic iron has been removed. This State land has been previously leased for metallic mineral exploration and development. There is no economic oil and gas production in the UP.

Vehicle Access:

Access to the block of state land east of Muehrcke Road is limited due to private property. A seasonal county road provides limited access to one corner of this block. Two smaller portions of state land within this south block are lacking access.

Survey Needs:

The sale of around 10 acres to Forsyth Township within stand 12 will need to have survey corners and property lines ran. A building trespass case within the west block along Knudson Road has been resolved.

Recreational Facilities and Opportunities:

The state snowmobile trail passes through 2 of the blocks. Lands adjacent to the Escanaba River are accessible to boaters. ATVs and snowmobiles frequent many of the forest roads. Hunting and wildlife watching are important recreational activities.

Fire Protection:

Much of this compartment is in the urban-wildland interface and has dry sandy soils supporting combustible pines. The close proximity to the Gwinn DNR field office and the Forsyth township fire department is advantageous to rapid wildfire response/suppression. Historical fire frequency is probably above average as compared to other portions of the Gwinn Management Unit.

Additional Compartment Information:

Illegal dumping of refuse and household trash is a problem, particularly in the eastern block. ATVs have created numerous unauthorized trails, mainly in the eastern block.

The following reports from the Inventory are attached:

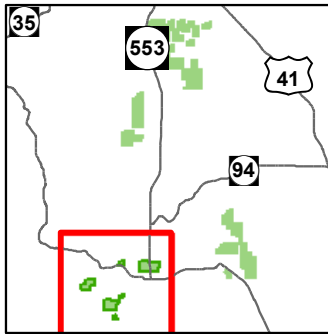
- Total Acres by Cover Type and Age Class**
- Cover Type by Harvest Method**
- Proposed Treatments – No Limiting Factors**
- Proposed Treatments – With Limiting Factors**
- Stand Details (Forested and Nonforested)**
- Dedicated and Proposed Special Conservation Areas**
- Site Condition Details**

The following information is displayed, where pertinent, on the attached compartment maps:

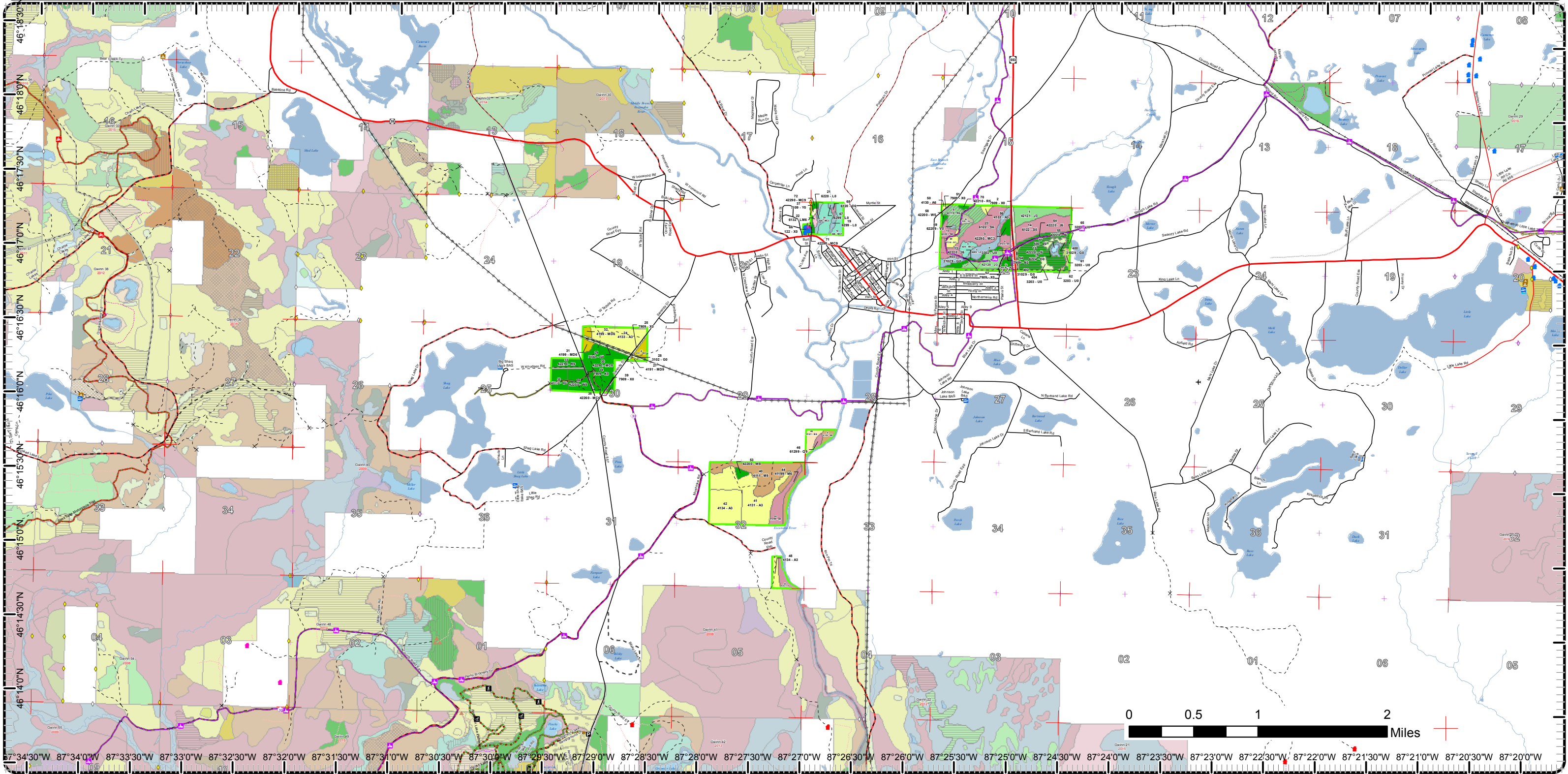
- Base feature information, stand boundaries, cover types, and numbers**
- Proposed treatments**
- Site condition boundaries**
- Details on the road access system**

Cover Type & Treatments

Compartment: 31
 T45N,R25W, Sec. 20, 21, 22, 28, 32
 County: Marquette
 Unit: Gwinn
 Mgmt Area: Sands Plains
 YOE: 2017
 Acres: 766 GIS Calculated
 Examiner: Ben Travis
 Map Revised: 8/7/2015
 Map Phase: Pre-Review



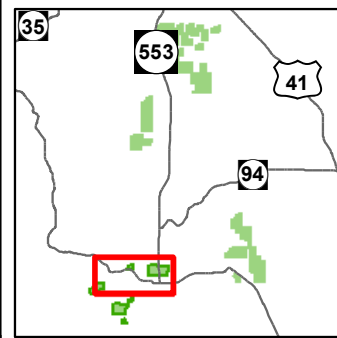
- ✚ Remonumented Section Corners
- ◆ Survey Grade GPS Corners
- ◇ Field Grade GPS Corners
- Miris Corners
- Highway
- County Paved Roads
- Paved Roads
- County Gravel Roads
- Gravel Roads
- Poor Dirt Roads
- County Poor Dirt Roads
- Trail (Non-Recreation)
- Closed Roads
- Designated Hiking Pathways
- Designated Equestrian Trails
- Designated Ski Trails
- Designated Snowshoe Trails
- ORV License & Trail Permit
- Snowmobile Trails
- Designated Railtrails
- ✕ Gate
- ▲ Berms
- Bridges
- ✈ Airport
- Boating Access Site
- ▲ Campground
- Fishing Access Site
- P Parking Lot
- ★ Trailhead
- 🏍 Motorcycle Trails (DNR License)
- 🚶 Hiking Trails
- 🏂 Ski Trails
- 🚲 Snowmobile Trails
- Railroads
- Rivers
- Lakes
- Pipeline
- ⊕ Powerline
- Treatments
- Clearcut (w/Reserves)
- Thinning (Crown, Low, Systematic)
- Forest Covertypes
- 411 - Northern Hardwood
- 413 - Aspen
- 414 - Other Upland Deciduous
- 419 - Mixed Upland Deciduous
- 421 - Planted Pines
- 422 - Natural Pines
- 429 - Mixed Upland Conifers
- 612 - Lowland Coniferous Forest
- 613 - Lowland Mixed Forest
- Non-Forest Covertypes
- 122 - Roads/Parking Lot
- 310 - Herbaceous Openland
- 320 - Upland Shrub
- 330 - Low Density Trees
- 500 - Water
- 622 - Lowland Shrub
- 710 - Sand/Soil
- 720 - Exposed Rock
- 790 - Other Bare/Sparsely Vegetated



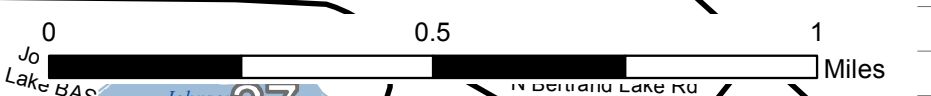
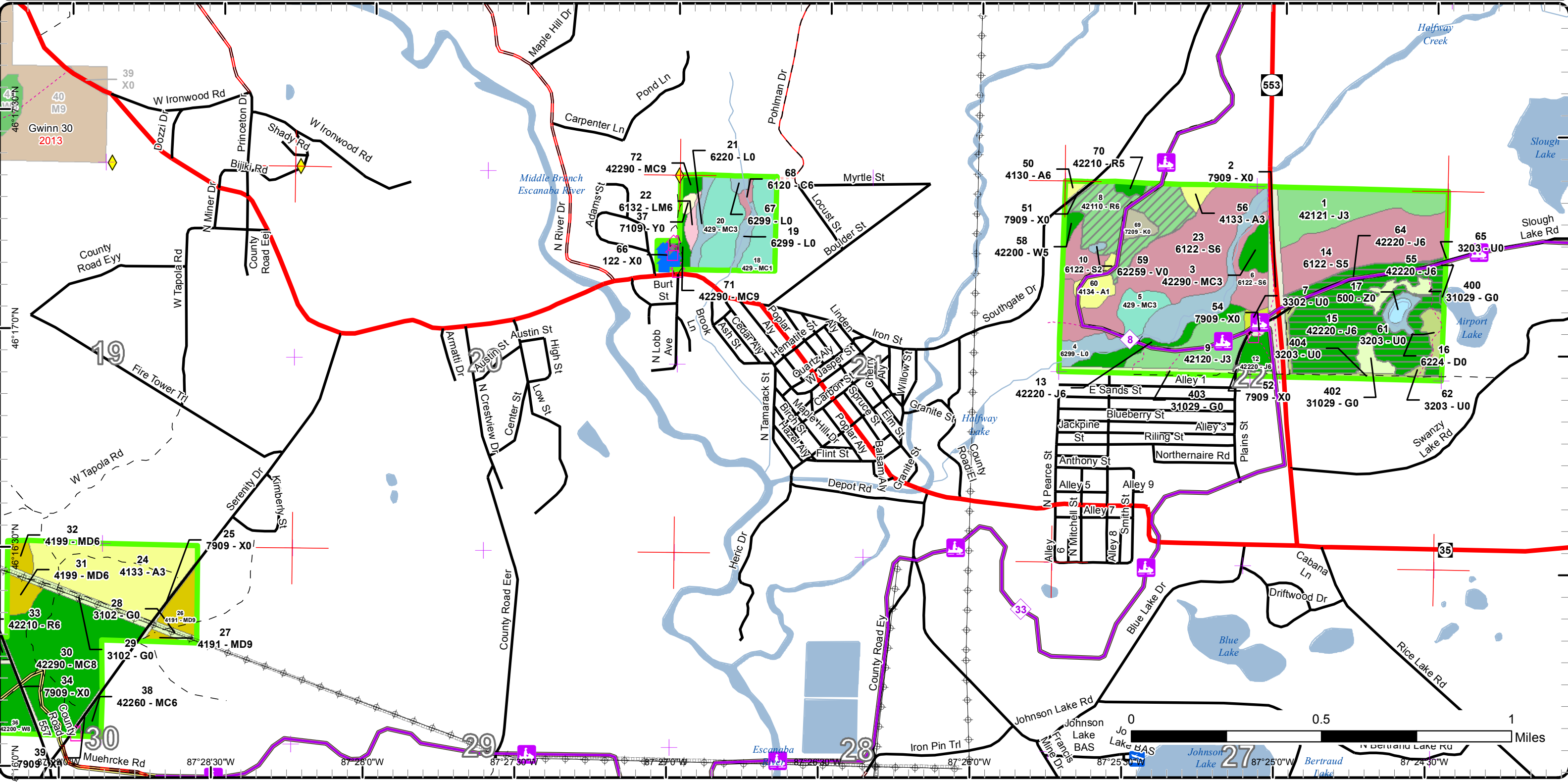
7°34'30"W 87°34'0"W 87°33'30"W 87°33'0"W 87°32'30"W 87°32'0"W 87°31'30"W 87°31'0"W 87°30'30"W 87°30'0"W 87°29'30"W 87°29'0"W 87°28'30"W 87°28'0"W 87°27'30"W 87°27'0"W 87°26'30"W 87°26'0"W 87°25'30"W 87°25'0"W 87°24'30"W 87°24'0"W 87°23'30"W 87°23'0"W 87°22'30"W 87°22'0"W 87°21'30"W 87°21'0"W 87°20'30"W 87°20'0"W

Cover Type & Treatments

Compartment: 31
 T45N,R25W, Sec. 20, 21, 22, 28, 32
 County: Marquette
 Unit: Gwinn
 Mgmt Area: Sands Plains
 YOE: 2017
 Acres: 766 GIS Calculated
 Examiner: Ben Travis
 Map Revised: 8/7/2015
 Map Phase: Pre-Review



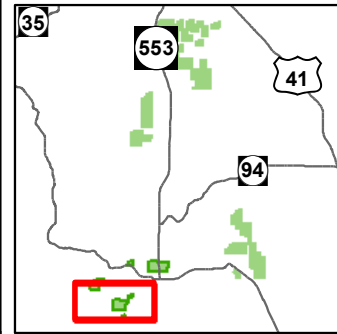
- + Remonumented Section Corners
- ◆ Survey Grade GPS Corners
- Miris Corners
- Highway
- Paved Roads
- County Gravel Roads
- - Poor Dirt Roads
- - County Poor Dirt Roads
- - - Trail (Non-Recreation)
- - - - Closed Roads
- Snowmobile Trails
- Bridges
- Boating Access Site
- Snowmobile Trails
- Rivers
- Lakes
- Pipeline
- Powerline
- Treatments
- Clearcut (w/Reserves)
- Thinning (Crown, Low, Systematic)
- Forest Covertype
- 413 - Aspen
- 419 - Mixed Upland Deciduous
- 421 - Planted Pines
- 422 - Natural Pines
- 429 - Mixed Upland Conifers
- 612 - Lowland Coniferous Forest
- 613 - Lowland Mixed Forest
- Non-Forest Covertype
- 122 - Roads/Parking Lot
- 310 - Herbaceous Openland
- 320 - Upland Shrub
- 330 - Low Density Trees
- 500 - Water
- 622 - Lowland Shrub
- 710 - Sand/Soil
- 720 - Exposed Rock
- 790 - Other Bare/Sparsely Vegetated



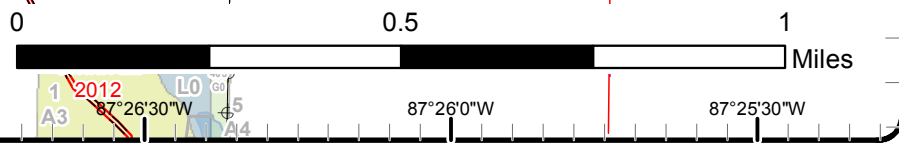
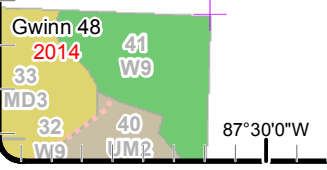
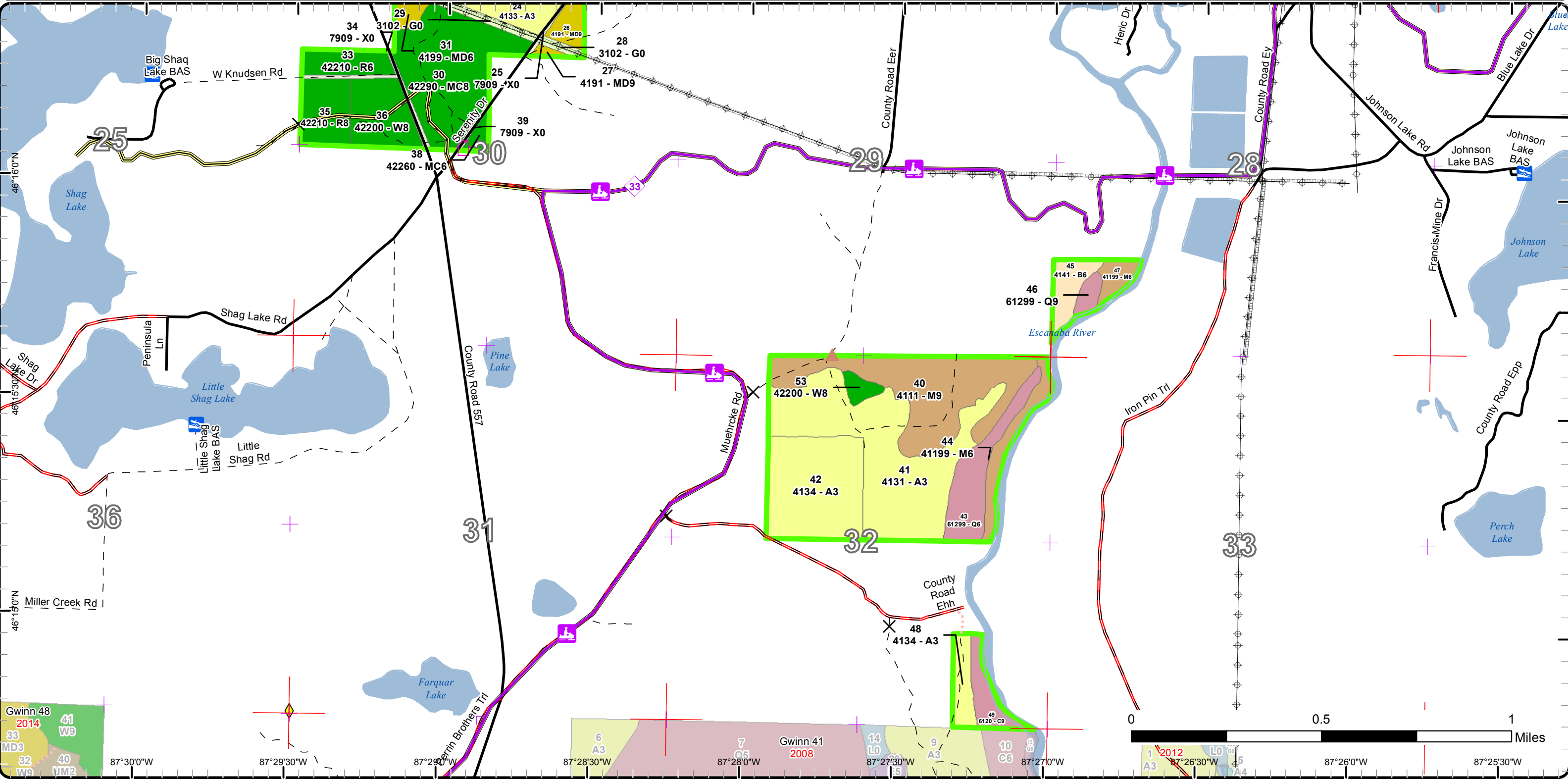
Map coordinates: 46°16'00"N, 46°17'00"N, 46°18'00"N, 46°19'00"N, 87°25'00"W, 87°26'00"W, 87°27'00"W, 87°28'00"W, 87°29'00"W

Cover Type & Treatments

Compartment: 31
 T45N,R25W, Sec. 20, 21, 22, 28, 32
 County: Marquette
 Unit: Gwinn
 Mgmt Area: Sands Plains
 YOE: 2017
 Acres: 766 GIS Calculated
 Examiner: Ben Travis
 Map Revised: 8/7/2015
 Map Phase: Pre-Review

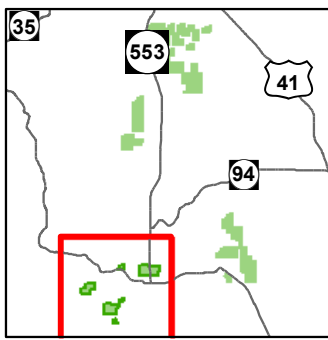


- ✚ Remonumented Section Corners
- ◆ Survey Grade GPS Corners
- Miris Corners
- Paved Roads
- County Gravel Roads
- Poor Dirt Roads
- Closed Roads
- Snowmobile Trails
- ✕ Gate
- ▲ Berms
- 🚤 Boating Access Site
- 🚙 Snowmobile Trails
- Rivers
- Lakes
- Pipeline
- Powerline
- Forest Covertype
 - 411 - Northern Hardwood
 - 413 - Aspen
 - 414 - Other Upland Deciduous
 - 419 - Mixed Upland Deciduous
 - 422 - Natural Pines
 - 612 - Lowland Coniferous Forest
- Non-Forest Covertype
 - 790 - Other Bare/Sparsely Vegetated
 - 310 - Herbaceous Openland

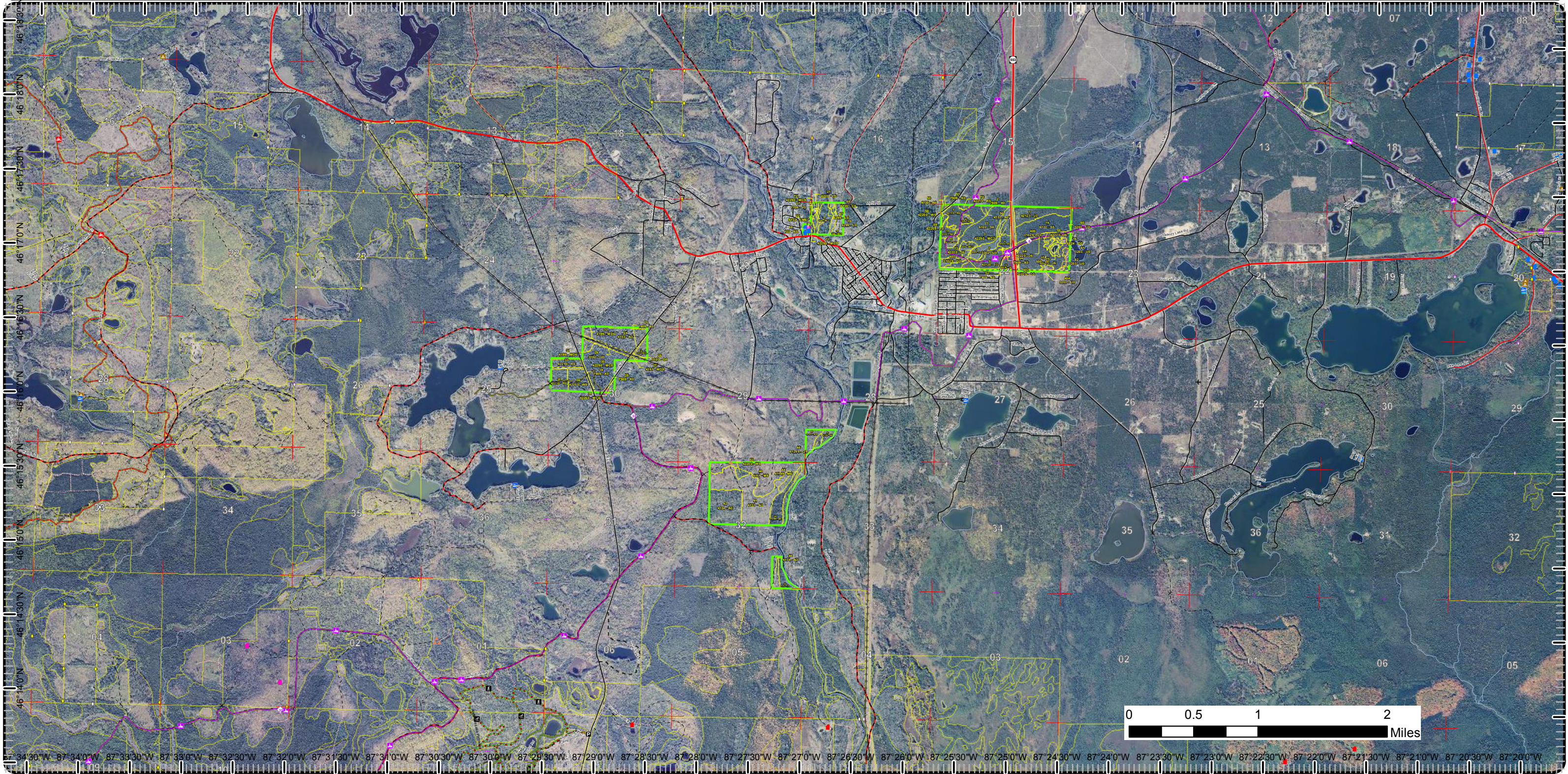


Stand Boundary Map

Compartment: 31
 T45N,R25W, Sec. 20, 21, 22, 28, 32
 County: Marquette
 Unit: Gwinn
 Mgmt Area: Sands Plains
 YOE: 2017
 Acres: 766 GIS Calculated
 Examiner: Ben Travis
 Map Revised: 8/7/2015
 Map Phase: Pre-Review



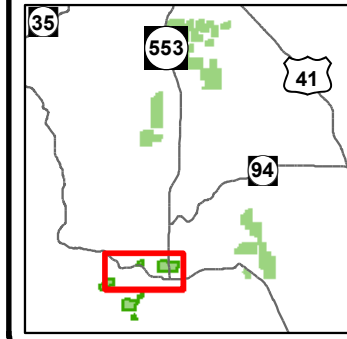
- | | | | | | |
|--|---|---|--|--|--|
| <ul style="list-style-type: none"> ✚ Remonumented Section Corners ◆ Survey Grade GPS Corners ◇ Field Grade GPS Corners — Miris Corners — Highway — County Paved Roads — Paved Roads — County Gravel Roads — Gravel Roads — Poor Dirt Roads — County Poor Dirt Roads — Trail (Non-Recreation) — Closed Roads | <ul style="list-style-type: none"> — Designated Hiking Pathways ● Designated Equestrian Trails — Designated Ski Trails ○ Designated Snowshoe Trails — ORV License & Trail Permit — Snowmobile Trails — Designated Railtrails ✕ Gate ▲ Berms ✈ Bridges ✈ Airport 🚤 Boating Access Site 🏠 Campground | <ul style="list-style-type: none"> 🚤 Fishing Access Site P Parking Lot ★ Trailhead 🏍 Motorcycle Trails (DNR License) 🚶 Hiking Trails 🚶 Ski Trails — Railroads — Rivers — Pipeline — Powerline | <ul style="list-style-type: none"> 🟡 Stand Boundaries | <p>Forest Covertypes</p> <ul style="list-style-type: none"> 411 - Northern Hardwood 413 - Aspen 414 - Other Upland Deciduous 419 - Mixed Upland Deciduous 421 - Planted Pines 422 - Natural Pines 429 - Mixed Upland Conifers 612 - Lowland Coniferous Forest 613 - Lowland Mixed Forest <p>Non-Forest Covertypes</p> <ul style="list-style-type: none"> 122 - Roads/Parking Lot | <ul style="list-style-type: none"> 310 - Herbaceous Openland 320 - Upland Shrub 330 - Low Density Trees 500 - Water 622 - Lowland Shrub 710 - Sand/Soil 720 - Exposed Rock 790 - Other Bare/Sparsely Vegetated |
|--|---|---|--|--|--|



87°34'30"W 87°34'0"W 87°33'30"W 87°33'0"W 87°32'30"W 87°32'0"W 87°31'30"W 87°31'0"W 87°30'30"W 87°30'0"W 87°29'30"W 87°29'0"W 87°28'30"W 87°28'0"W 87°27'30"W 87°27'0"W 87°26'30"W 87°26'0"W 87°25'30"W 87°25'0"W 87°24'30"W 87°24'0"W 87°23'30"W 87°23'0"W 87°22'30"W 87°22'0"W 87°21'30"W 87°21'0"W 87°20'30"W 87°20'0"W

Stand Boundary Map

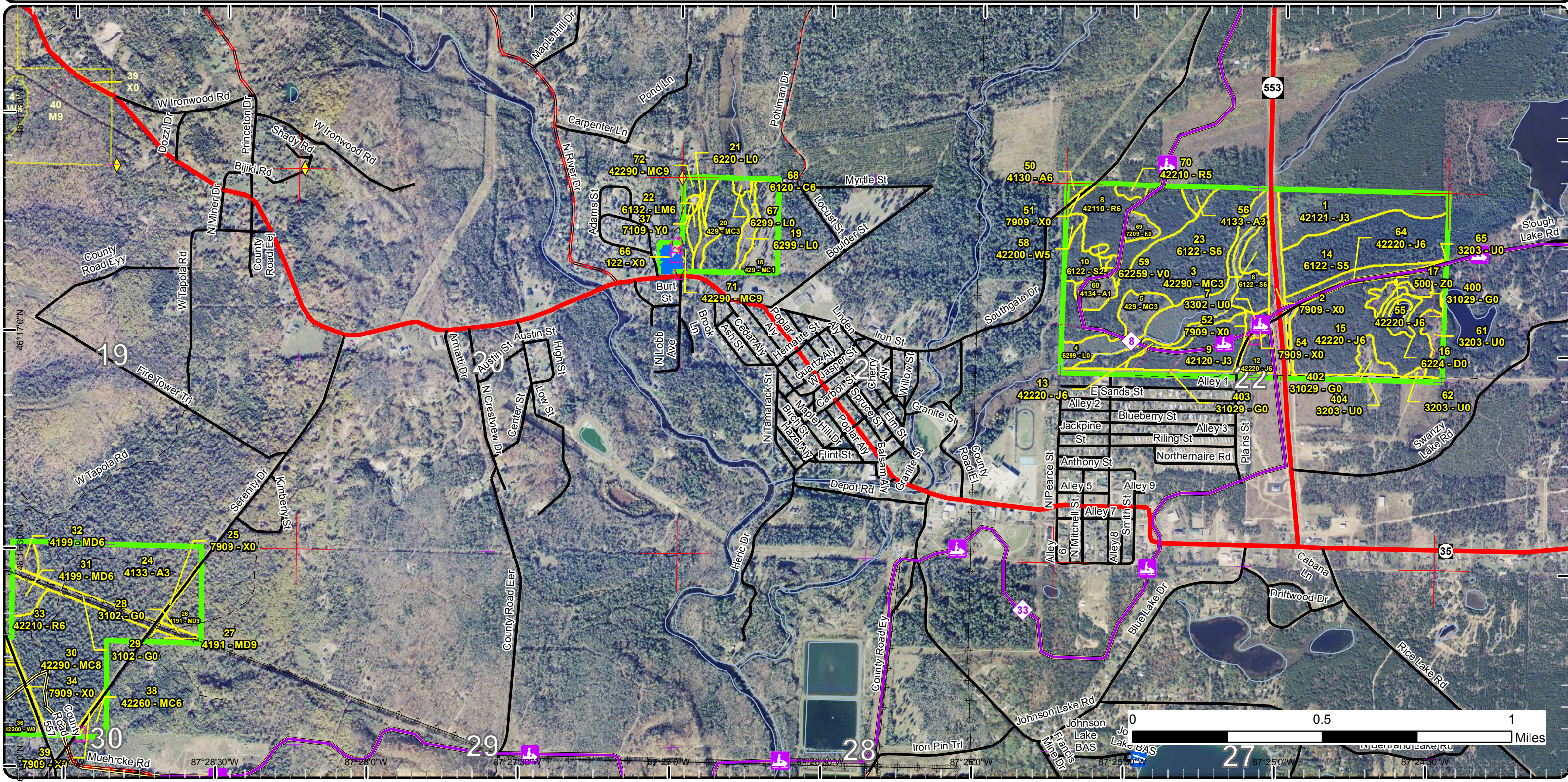
Compartment: 31
 T45N,R25W, Sec. 20, 21, 22, 28, 32
 County: Marquette
 Unit: Gwinn
 Mgmt Area: Sands Plains
 YOE: 2017
 Acres: 766 GIS Calculated
 Examiner: Ben Travis
 Map Revised: 8/7/2015
 Map Phase: Pre-Review



- ✚ Remonumented Section Corners
- ◆ Survey Grade GPS Corners
- Miris Corners
- Highway
- Paved Roads
- County Gravel Roads
- Poor Dirt Roads
- County Poor Dirt Roads
- Trail (Non-Recreation)
- Closed Roads
- Snowmobile Trails
- Bridges
- Boating Access Site
- Snowmobile Trails
- Rivers
- Pipeline
- Powerline
- Stand Boundaries
- Forest Covertype
- Non-Forest Covertype

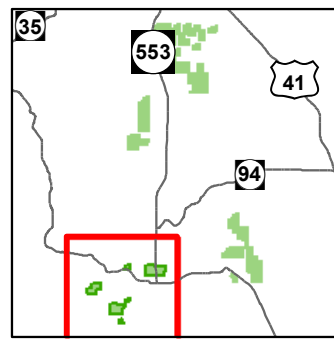
- 122 - Roads/Parking Lot
- 310 - Herbaceous Openland
- 320 - Upland Shrub
- 330 - Low Density Trees
- 500 - Water
- 622 - Lowland Shrub
- 710 - Sand/Soil
- 720 - Exposed Rock
- 790 - Other Bare/Sparsely Vegetated

- 413 - Aspen
- 419 - Mixed Upland Deciduous
- 421 - Planted Pines
- 422 - Natural Pines
- 429 - Mixed Upland Conifers
- 612 - Lowland Coniferous Forest
- 613 - Lowland Mixed Forest



Special Conservation Areas & Site Conditions Map

Compartment: 31
 T45N,R25W, Sec. 20, 21, 22, 28,
 County: Marquette
 Unit: Gwinn
 Mgmt Area: Sands Plains
 YOE: 2017
 Acres: 766 GIS Calculated
 Examiner: Ben Travis
 Map Revised: 8/7/2015
 Map Phase: Pre-Review



- ✚ Remonumented Section Corners
- ◆ Survey Grade GPS Corners
- ◇ Field Grade GPS Corners
- Miris Corners
- Highway
- County Paved Roads
- Paved Roads
- County Gravel Roads
- Gravel Roads
- Poor Dirt Roads
- County Poor Dirt Roads
- Trail (Non-Recreation)
- Closed Roads
- Designated Hiking Pathways
- Designated Equestrian Trails
- Designated Ski Trails
- Designated Snowshoe Trails
- ORV License & Trail Permit
- Snowmobile Trails
- Designated Railtrails
- ✕ Gate
- ▲ Berms
- Bridges
- ✈ Airport
- Boating Access Site
- ▲ Campground
- Fishing Access Site
- P Parking Lot
- ★ Trailhead
- 🏍 Motorcycle Trails (DNR License)
- 🚶 Hiking Trails
- 🏂 Ski Trails
- 🏠 Snowmobile Trails
- Railroads
- Rivers
- Pipeline
- Powerline

Stand Boundaries

Site Condition

Available w/ Constraints

Unavailable

Available Factors W/ Constraints

4A: No Markets Available for these Forest Products

5B: Maintain for regeneration purposes

Unavailable Factors

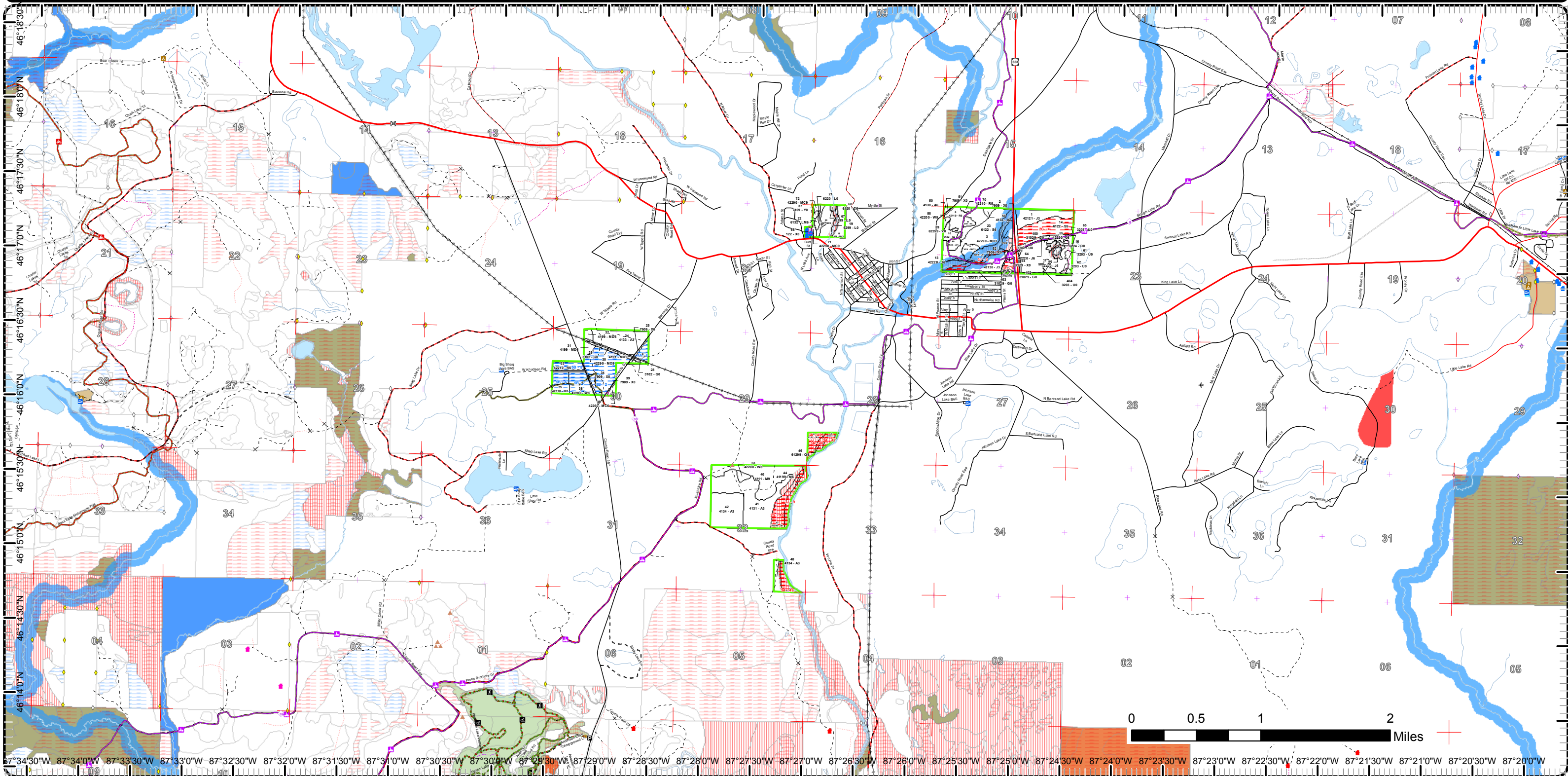
2G: Too wet (sensitive soils, does not include access issues)

3A: Potential old growth / biodiversity

3E: Easement / lease, non-military (e.g.- Consumers Power red pine, etc)

3J: Water quality / BMPs (stream, river, or lake)

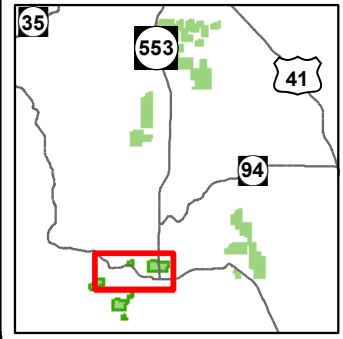
Special Conservation Areas



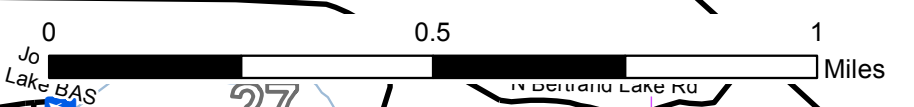
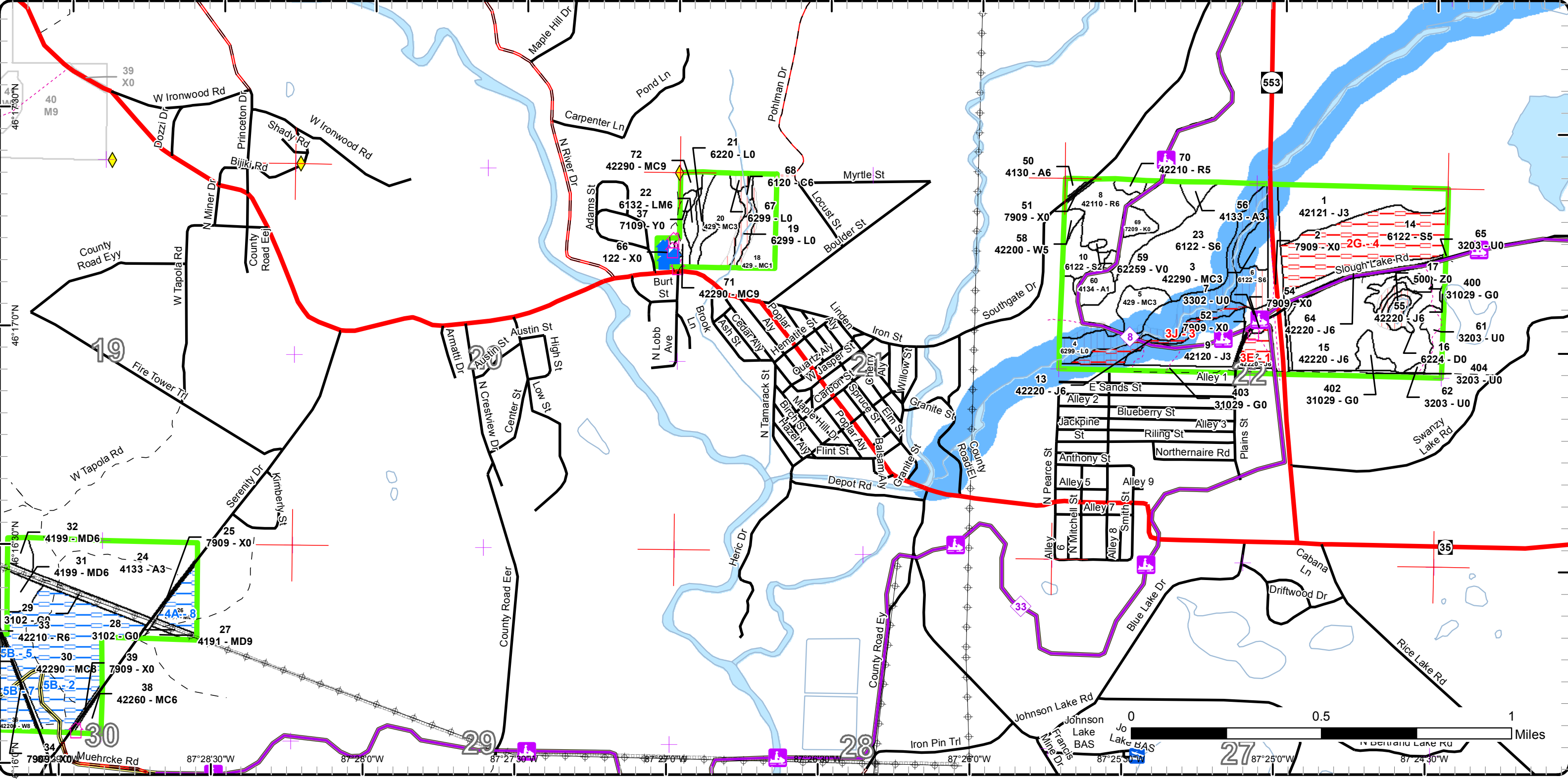
77°34'30"W 87°34'0"W 87°33'30"W 87°33'0"W 87°32'30"W 87°32'0"W 87°31'30"W 87°31'0"W 87°30'30"W 87°30'0"W 87°29'30"W 87°29'0"W 87°28'30"W 87°28'0"W 87°27'30"W 87°27'0"W 87°26'30"W 87°26'0"W 87°25'30"W 87°25'0"W 87°24'30"W 87°24'0"W 87°23'30"W 87°23'0"W 87°22'30"W 87°22'0"W 87°21'30"W 87°21'0"W 87°20'30"W 87°20'0"W

Special Conservation Areas & Site Conditions Map

Compartment: 31
 T45N,R25W, Sec. 20, 21, 22, 28, 32
 County: Marquette
 Unit: Gwinn
 Mgmt Area: Sands Plains
 YOE: 2017
 Acres: 766 GIS Calculated
 Examiner: Ben Travis
 Map Revised: 8/7/2015
 Map Phase: Pre-Review



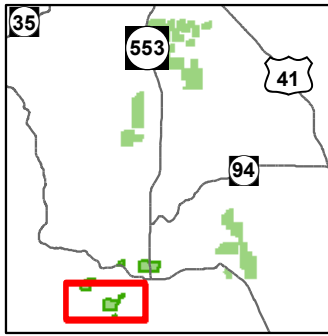
- ✚ Remonumented Section Corners
- ◆ Survey Grade GPS Corners
- Miris Corners
- Highway
- Paved Roads
- County Gravel Roads
- Poor Dirt Roads
- County Poor Dirt Roads
- Trail (Non-Recreation)
- Closed Roads
- Snowmobile Trails
- Bridges
- Boating Access Site
- Snowmobile Trails
- Rivers
- Pipeline
- Powerline
- Stand Boundaries
- Site Condition
- Available w/ Constraints
- Unavailable
- Available Factors W/ Constraints
- 4A: No Markets Available for these Forest Products
- 5B: Maintain for regeneration purposes
- Unavailable Factors
- 2G: Too wet (sensitive soils, does not include access issues)
- 3E: Easement / lease, non-military (e.g. - Consumers Power red pine, etc)
- 3J: Water quality / BMPs (stream, river, or lake)
- Special Conservation Areas
- Cold Water Streams
- Cold Water Lakes
- High Priority Trout Stream Buffer



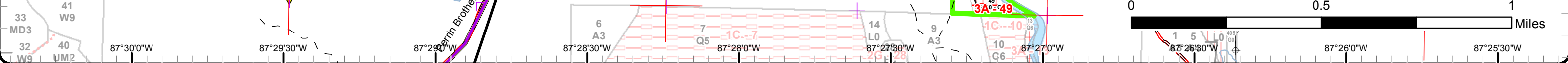
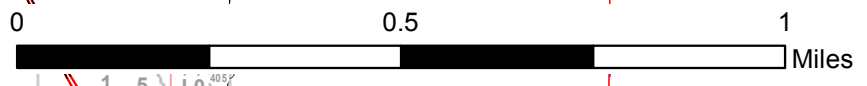
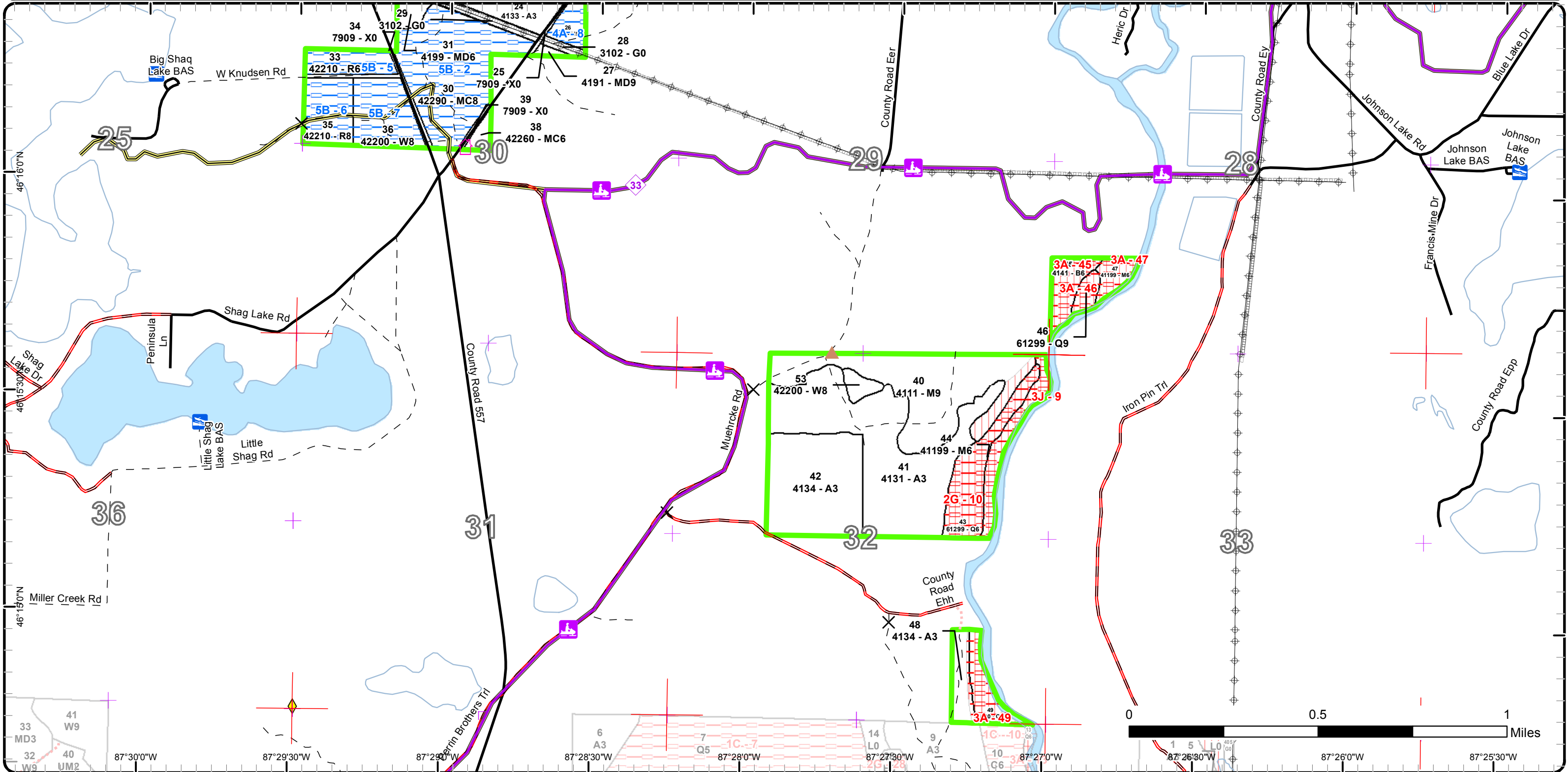
46°16'00"N 87°28'30"W 87°28'0"W 87°27'30"W 87°27'0"W 87°26'30"W 87°26'0"W 87°25'30"W 87°25'0"W 87°24'30"W

Special Conservation Areas & Site Conditions Map

Compartment: 31
 T45N,R25W, Sec. 20, 21, 22, 28, 32
 County: Marquette
 Unit: Gwinn
 Mgmt Area: Sands Plains
 YOE: 2017
 Acres: 766 GIS Calculated
 Examiner: Ben Travis
 Map Revised: 8/7/2015
 Map Phase: Pre-Review



- ✚ Remonumented Section Corners
- ◆ Survey Grade GPS Corners
- Miris Corners
- Paved Roads
- County Gravel Roads
- - - Poor Dirt Roads
- - - Closed Roads
- Snowmobile Trails
- ✕ Gate
- ▲ Berms
- 🚤 Boating Access Site
- 🏠 Snowmobile Trails
- Rivers
- Pipeline
- ⚡ Powerline
- ▭ Stand Boundaries
- Site Condition
- Available w/ Constraints
- Unavailable
- Available Factors W/ Constraints
- 4A: No Markets Available for these Forest Products
- 5B: Maintain for regeneration purposes
- Unavailable Factors
- 2G: Too wet (sensitive soils, does not include access issues)
- 3A: Potential old growth / biodiversity
- 3J: Water quality / BMPs (stream, river, or lake)
- Special Conservation Areas
- Cold Water Streams
- Cold Water Lakes



Report 1 – Total Acres by Cover Type and Age Class



Age Class

	Non-Forest	0-9	10-19	20-29	30-39	40-49	50-59	60-69	70-79	80-89	90-99	100-109	110-119	120-129	130-139	140-149	150+	Uneven-Aged	Total
Aspen	0	6	43	119	3	0	0	0	0	0	0	0	0	0	0	0	0	0	171
Bare/Sparsely Vegetated	20	0	0	0	0	0	0	0	0	0	0	0	0	0	0	0	0	0	20
Bog	1	0	0	0	0	0	0	0	0	0	0	0	0	0	0	0	0	0	1
Cedar	0	0	0	0	0	0	0	0	0	1	0	9	0	0	0	0	0	0	10
Exposed Rock	3	0	0	0	0	0	0	0	0	0	0	0	0	0	0	0	0	0	3
Herbaceous Openland	21	0	0	0	0	0	0	0	0	0	0	0	0	0	0	0	0	0	21
Jack Pine	0	0	0	41	0	57	0	0	7	0	0	0	0	0	0	0	0	0	105
Low-Density Trees	1	0	0	0	0	0	0	0	0	0	0	0	0	0	0	0	0	0	1
Lowland Conifers	0	0	0	0	0	0	0	0	0	4	0	19	0	0	0	0	0	0	23
Lowland Mixed Forest	0	0	0	0	0	0	0	0	0	0	2	0	0	0	0	0	0	0	2
Lowland Shrub	29	0	0	0	0	0	0	0	0	0	0	0	0	0	0	0	0	0	29
Lowland Spruce/Fir	0	0	0	6	0	0	47	44	0	0	0	0	0	0	0	0	0	0	97
Mixed Upland Deciduous	0	0	0	0	0	0	0	0	7	0	8	0	0	0	0	0	0	0	15
Natural Mixed Pines	0	0	0	5	0	0	3	0	0	0	4	0	0	0	0	0	49	0	61
Northern Hardwood	0	0	0	0	0	0	0	0	0	0	0	0	0	0	0	0	0	70	70
Paper Birch	0	0	0	0	0	0	0	0	9	0	0	0	0	0	0	0	0	0	9
Red Pine	0	0	0	0	27	0	0	0	0	25	0	0	0	0	0	0	0	0	52
Sand, Soil	1	0	0	0	0	0	0	0	0	0	0	0	0	0	0	0	0	0	1
Treed Bog	3	0	0	0	0	0	0	0	0	0	0	0	0	0	0	0	0	0	3
Upland Conifers	0	18	0	13	0	0	0	0	0	0	0	0	0	0	0	0	0	0	31
Upland Shrub	13	0	0	0	0	0	0	0	0	0	0	0	0	0	0	0	0	0	13
Urban	2	0	0	0	0	0	0	0	0	0	0	0	0	0	0	0	0	0	2
Water	2	0	0	0	0	0	0	0	0	0	0	0	0	0	0	0	0	0	2
White Pine	0	0	0	0	0	0	0	0	2	0	4	0	0	0	0	0	19	0	25
Total	96	24	43	184	30	57	3	47	51	43	5	18	28	0	0	0	68	70	767



Report 2 – Treatment Summary

Gwinn Mgt. Unit

Year of Entry: 2017

Acres of Harvest

Compartment 31

Total Compartment Acres: 766

Commercial Harvest - 77
 Harvests with Site Condition - 0
 Next Step Harvest - 0
 Habitat Cut - 0

Cover Type by Harvest Method

	Clearcut	Selection	Patch Clearcut	Seed Tree	Shelterwood	Thinning	Overstory Removal	Salvage	Other	Total Acres
Jack Pine	52	0	0	0	0	0	0	0	0	52
Red Pine	0	0	0	0	0	25	0	0	0	25
Total	52	0	0	0	0	25	0	0	0	77

Proposed and Next Step Treatments by Method

	Harvest	Site Prep	Planting	Seeding	Burning	Pesticide	Monitoring	Other	Non-Forest Mgt.	Total Acres
Current	77	0	0	0	0	0	0	0	0	77
Next Step	0	52	0	52	0	0	0	0	0	103
Total	77	52	0	52	0	0	0	0	0	180



S t a n d	Treatment Name	Acres	Stand CoverType	Size Density	Stand Age	BA Range	Treatment Type	Treatment Method	Cover Type Objective	Age Structure	Approval Status
8	32031008-Cut	25.4	42110 - Planted Red Pine	Poletimber Well	38	141- 170	Harvest	Systematic Thinning	4211 - Planted Red Pine	Even-Aged	Proposal

Habitat Cut: No**Site Condition:**

Prescription Conduct third row thinning of red pine and removal of all jack pine. Row integrity varies so may have to create passage for logging equipment in areas with dispersed trees. Attempt to leave any overstory oak or white pine. May need to widen some rows being thinned for passage of logging vehicles if too narrow.

Next Step
Treatments:

Acceptable
Regen:

Other Summer harvest only to avoid conflicts with the snowmobile trail. Include road improvement specs. in timber sale contract. Old next step comments:

Proposed Start Date: 10/1 /2016

15	32031015-Cut	46.0	42220 - Natural Jack Pine	Poletimber Well	46	81-110	Harvest	Clearcut with Retention	4212 - Planted Jack Pine	Even-Aged	Proposal
----	--------------	------	------------------------------	--------------------	----	--------	---------	----------------------------	-----------------------------	-----------	----------

Habitat Cut: No**Site Condition:**

Prescription Remove all jack pine as in decline. Leave any white pine, red pine, white birch, or oak. All new roads need to be bermed after sale to prevent dumping in remote areas. Existing roads are already bermed due to severe dumping problem.

Next Step SitePrep, Trenching; Seeding, Machine Seed
Treatments:

Acceptable Jack pine, red pine, and white pine.
Regen:

Other Stand will be trenched and seeded/planted to jack pine. Trench and seed across closed roads. Old next step comments:

Proposed Start Date: 10/1 /2016

64	32031064-Cut	5.6	42220 - Natural Jack Pine	Poletimber Well	46	81-110	Harvest	Clearcut with Retention	4212 - Planted Jack Pine	Even-Aged	Proposal
----	--------------	-----	------------------------------	--------------------	----	--------	---------	----------------------------	-----------------------------	-----------	----------

Habitat Cut: No**Site Condition:**

Prescription Remove all jack pine as in decline. Leave any white pine, red pine, white birch, or oak. All roads will need to be bermed after sale to prevent dumping down steep bank to north. Won't be able to descend steep bank to north so align boundary line appropriately.

Next Step SitePrep, Trenching; Seeding, Machine Seed
Treatments:

Acceptable Jack pine, red pine, and white pine.
Regen:

Other Stand will be trenched and seeded/planted to jack pine. Old next step comments:

Proposed Start Date: 10/1 /2016

**Total Treatment
Acreage Proposed: 77.0**

Report 5 – Site Conditions

Gwinn Mgt. Unit
Ben Travis : Examiner

Compartment: 31
Year of Entry: 2017

Availability for Management

Total Acres	Acres Available	Acres Avail		Dominant Site Conditions	Dominant Site Conditions						
		With Condition	Not Available		4A	5B	2G	3A	3E	3J	
172	170	0	1	Aspen				1			
20	20	0	0	Bare/Sparsely Vegetated							
1	1	0	0	Bog							
11	2	0	9	Cedar				9			
3	3	0	0	Exposed Rock							
21	21	0	0	Herbaceous Openland							
105	93	0	12	Jack Pine					5	7	
1	1	0	0	Low-Density Trees							
23	0	0	23	Lowland Conifers			19	4			
2	2	0	0	Lowland Mixed Forest							
29	29	0	0	Lowland Shrub							
96	61	0	36	Lowland Spruce/Fir			36				
15	9	7	0	Mixed Upland Deciduous	7						
60	12	49	0	Natural Mixed Pines		49					
70	53	0	17	Northern Hardwood				5		11	
9	0	0	9	Paper Birch				9			
51	27	24	0	Red Pine		24					
1	1	0	0	Sand, Soil							
3	3	0	0	Treed Bog							
31	31	0	0	Upland Conifers							
13	13	0	0	Upland Shrub							
2	2	0	0	Urban							
2	2	0	0	Water							
24	5	19	0	White Pine		19					
766	560	98	107	Total Forested Acres	7	91	55	29	5	18	
	73%	13%	14%	Relative Percent							

**Due to limitations in the current Site Conditions Analysis tool, all nonforested acres are considered available. Future development will enable analysis of nonforested types.*

Site No.	Dominant Site Cond Availability	Dominant Site Condition	Acres	Other Site Condition	Other Site Condition	Other Site Condition	Other Site Condition
1	Unavailable	3E: Easement / lease, non-military (e.g.- Consumers Power red pine, etc)	5	Unspecified	Unspecified	Unspecified	Unspecified
Comments:							

Report 5 – Site Conditions

Gwinn Mgt. Unit
Ben Travis : Examiner

Compartment: 31
Year of Entry: 2017

Land pending disposal to Forsyth Township. Technicality with deed. Is at Real estate level.							
2	Available	5B: Maintain for regeneration purposes	49	Unspecified	Unspecified	Unspecified	Unspecified
Comments:							
3	Unavailable	3J: Water quality / BMPs (stream, river, or lake)	7	Unspecified	Unspecified	Unspecified	Unspecified
Comments:							
4	Unavailable	2G: Too wet (sensitive soils, does not include access issues)	36	Unspecified	Unspecified	Unspecified	Unspecified
Comments:							
5	Available	5B: Maintain for regeneration purposes	10	Unspecified	Unspecified	Unspecified	Unspecified
Comments:							
6	Available	5B: Maintain for regeneration purposes	15	Unspecified	Unspecified	Unspecified	Unspecified
Comments:							
7	Available	5B: Maintain for regeneration purposes	19	Unspecified	Unspecified	Unspecified	Unspecified
Comments:							

Report 5 – Site Conditions

Gwinn Mgt. Unit
Ben Travis : Examiner

Compartment: 31
Year of Entry: 2017

8	Available	4A: No Markets Available for these Forest Products	7	Unspecified	Unspecified	Unspecified	Unspecified
Comments:							
9	Unavailable	3J: Water quality / BMPs (stream, river, or lake)	11	Unspecified	Unspecified	Unspecified	Unspecified
Comments:							
10	Unavailable	2G: Too wet (sensitive soils, does not include access issues)	20	3J: Water quality / BMPs (stream, river, or lake)	Unspecified	Unspecified	Unspecified
Comments:							
45	Unavailable	3A: Potential old growth / biodiversity	9	2F: Too steep	Unspecified	Unspecified	Unspecified
Comments:							
46	Unavailable	3A: Potential old growth / biodiversity	4	3G: Other Influence zones - See comments	3J: Water quality / BMPs (stream, river, or lake)	3D: Recreational / Scenic values	Unspecified
Comments:							
47	Unavailable	3A: Potential old growth / biodiversity	6	3G: Other Influence zones - See comments	3J: Water quality / BMPs (stream, river, or lake)	Unspecified	Unspecified
Comments:							

Report 5 – Site Conditions

Gwinn Mgt. Unit
Ben Travis : Examiner

Compartment: 31
Year of Entry: 2017

49	Unavailable	3A: Potential old growth / biodiversity	11	3G: Other Influence zones - See comments	3D: Recreational / Scenic values	3J: Water quality / BMPs (stream, river, or lake)	Unspecified
----	-------------	---	----	--	----------------------------------	---	-------------

Comments:

Mgt. Unit

Compartment: #Type!

Year of Entry:



Report 6 – PROPOSED SPECIAL CONSERVATION AREA* (SCA) DETAILS

* This is a partial list of SCAs for this compartment. Not included are those areas identified under other Department initiatives (Natural Rivers, Deer Wintering Areas, etc.). Those will be identified in separate, future map and report products.

SCA Name	SCA Category	Detail Type	Recommendation	Acres
Comments				



Report 7 – EXISTING SPECIAL CONSERVATION AREA DETAILS

* This is a list of SCA's for this compartment along with a 1/4 mile buffer surrounding the compartment. Refer to the Special Conservation Area Map for locations of the below listed Conservation Areas.

ERA = Ecological Reference Area
 HCVA = High Conservation Value Area
 SCA = Special Conservation Area

Conservation Area	Type	Description
SCA	Cold Water Lake	A coldwater lake has temperature and dissolved oxygen conditions that allow naturally-reproduced or stocked trout populations and those of other coldwater fish species to persist from year to year. Suitable conditions for coldwater fishes may occur in Michigan lakes if they are relatively deep, have substantial groundwater inflows, or are located in colder (northern) areas of the state. Such lakes are established by Director's action and designated as trout resources by Fisheries Order 200.
SCA	Cold Water Stream	A coldwater stream has temperature and dissolved oxygen conditions that allow naturally-reproduced or stocked trout populations and those of other coldwater fish species (e.g., slimy sculpin) to persist from year to year. Coldwater streams in Michigan typically provide these conditions due to substantial contributions of groundwater to their stream flows. Such streams are established by Director's action and designated as trout resources by Fisheries Order 210.
SCA	Riparian Area	A transitional area between aquatic and terrestrial ecosystems in which the terrestrial ecosystem influences the aquatic ecosystem and vice-versa. Because of the unique conditions adjacent to lakes, streams and open water wetlands, riparian areas harbor a high diversity of plants and wildlife. Riparian communities are ecologically and socially significant in their effects on water quality and quantity, as well as aesthetics, habitat, bank stability, timber production, and their contribution to overall biodiversity.



	Level 4 Cover Type	Size Density	Acres	Stand Age	BA Range	General Comments:
1	42121 - Planted Jack Pine, Mixed Deciduous	Sapling Well	24.4	26	Immature	Stand cut 1 in 1988, planted 1989. Well-stocked. Inclusion of aspen saplings and retained white pine supercanopy trees to northwest. Jack pine just short of achieving one-stick merchantable height. Red maple, cherry, and white pine saplings found. Very sporadic fir poletimber.
3	42290 - Natural Mixed Pine	Sapling Well	4.9	26	Immature	Cut 1988-Not planted. Scattered white pine log trees left along road. Very well-stocked stand.
5	429 - Mixed Upland Conifers	Sapling Well	6.9	7	Immature	Areas of rock outcrops. Cut 2008 under permit #32-013-07-01. Blueberry, bracken fern, and raspberry comprise herbaceous layer. White pine, red maple, aspen, and tamarack saplings found. Remnant supercanopy red and white pine remain from past overstory.
6	6122 - Black Spruce	Poletimber Well	7.6	75	Unspecified	
8	42110 - Planted Red Pine	Poletimber Well	25.4	38	141-170	R6 plantation. Area was clearcut and roller-chopped/scarified in 1977. Red pine planted 1978, Release treatment in 1982-3 spot application with herbicide spray. Some rock outcrop areas. Some large white and red pine as well as oak left throughout stand. Also fir and spruce are uncommon overstory associates. Jack pine has seeded in many areas. Jack pine is 1/2 to 1 stick tall. Snowmobile trail passes through stand. Higher stocking of red pine found to south.
9	42120 - Planted Jack Pine	Sapling Well	16.7	26	Immature	Jack pine plantation 2" dbh well stocked planted 1989. Some older dumped refuse. Snowmobile trail through stand. Several unauthorized ATV trails leading to subdivision to south. Some areas of exposed bedrock.
10	6122 - Black Spruce	Sapling Medium	6.1	26	1-50	Blueberry and lichens. White birch saplings found.
12	42220 - Natural Jack Pine	Poletimber Well	5.1	46	51-80	Some older piles of refuse in this stand. Powerline ROW through stand leading to private building. 1 to 2 stick jack pine. Site is low quality. There are scattered older and larger jack pine approaching 10 to 12 inches Dbh.
13	42220 - Natural Jack Pine	Poletimber Well	7.0	75	51-80	Stand on slope leading down to Halfway Creek. Rock outcrops to west.
14	6122 - Black Spruce	Poletimber Medium	36.0	78	81-110	Steep bank between stand 14 and 64 to south. Trees are more dense and larger to south. Heavy Sphagnum moss. Red maple and white birch saplings found. White birch and white pine are uncommon overstory associates.
15	42220 - Natural Jack Pine	Poletimber Well	46.0	46	81-110	Natural stand resulting from wildfire in 1969, Budworm in stand 10 years ago. Fairly frequent jack pine snags and trees with dead tops. Fairly harsh site. Numerous dumps in stand with appliances, furniture, tires etc. Some areas overstocked, some areas lower BA. Most of stand is well-stocked. Mostly 2- 3 stick. Dumps cleaned up first week of November 2005.



	Level 4 Cover Type	Size Density	Acres	Stand Age	BA Range	General Comments:
18	429 - Mixed Upland Conifers	Sapling Poor	10.9	5	Immature	Cedar on lowland edge and scattered red and white pine will be left. Also left advanced fir regeneration. Convert to fir and whatever seeds in. Stand harvested as "Backyard Jack Pine" #010-07-1 - cut (and chipped) in November, 2010. Scattered red oak saplings. Heavy sedge with sweetfern. Jack pine seedlings 2 to 3 feet tall. White spruce and white pine saplings found. Regeneration is patchy but adequate.
20	429 - Mixed Upland Conifers	Sapling Well	13.2	24	Immature	Scattered large white pine with aspen regeneration understory. Cut in 1991. Very thick white pine saplings approximately 24 feet tall. Deer runways. Residual white pine overstory trees left from last harvest. White birch, black cherry, and cedar saplings found. Black cherry poletimber present.
22	6132 - Mixed Lowland Forest with Cedar	Poletimber Well	2.0	100	51-80	Very few 1 stick ash. Many deer runways. Occasional red maple poles.
23	6122 - Black Spruce	Poletimber Well	46.8	65	81-110	Sphagnum moss. Variable tree heights. Patches of C6 to west. Snowmobile passes through stand. White birch, trembling aspen, balsam fir, and red maple are uncommon overstory associates.
24	4133 - Aspen, Mixed Pine	Sapling Well	38.0	23	51-80	Area cut 1992 Permit 29-89-1, removing all but large red pine, white pine, and oak. Red oak saplings found. Hemlock and cedar are infrequent overstory associates. Supercanopy red and white pine. Very dense stand.
26	4191 - Mixed Upland Deciduous with Conifer	Sawtimber Well	6.7	102	51-80	Yellow birch saplings found. Northern part of stand overstory comprised of less red oak sawtimber and more white pine and red pine.
27	4191 - Mixed Upland Deciduous with Conifer	Sawtimber Well	1.3	102	51-80	
30	42290 - Natural Mixed Pine	Sawtimber Medium	48.5	178	81-110	Area cut 1992 Permit 29-89-1, left large red pine, white pine and oak. Now most areas have a thick understory of fir. Patches where white pine or red pine more predominant. Heavier red pine stocking to south. Black spruce poles are infrequent overstory associates. White birch, white pine, black spruce and red pine saplings present. Snowmobile trail passes through stand.
31	4199 - Other Mixed Upland Deciduous	Poletimber Well	4.3	84	51-80	Stand harvested as "Squirrel Haven Sale" #034-07-01 and completed Nov., 2010. Many multi-trunked oaks. Hilly.
32	4199 - Other Mixed Upland Deciduous	Poletimber Well	3.1	84	51-80	Stand harvested as "Squirrel Haven Sale" #034-07-01 and completed November, 2010. Many multi-trunked oaks. Hilly.
33	42210 - Natural Red Pine	Poletimber Well	9.6	80	81-110	Stand harvested as "Knudsen Road Sale" #011-07-01 (Unit 1) - thinned Fall, 2009. Garage was in trespass - case report FMFM607521986004 on file, property was disposed and case is closed. White birch, red maple and black spruce poles are uncommon overstory associates. Red maple saplings present.



	Level 4 Cover Type	Size Density	Acres	Stand Age	BA Range	General Comments:
35	42210 - Natural Red Pine	Sawtimber Medium	14.7	80	51-80	Snowmobile trail goes through stand. Stand harvested as "Knudsen Road Sale" #011-07-01 (Unit 2) - thinned summer, 2009. Patchy overstory stocking.
36	42200 - Natural White Pine	Sawtimber Medium	18.6	178	51-80	Area cut 1992 Permit 29-89-1. Left all large red pine, white pine and oak. Now most areas have a thick understory of fir or aspen. Jack pine, white pine, black spruce, red pine and black cherry saplings found. Red oak, bigtooth aspen and white spruce are infrequent overstory associates.
38	42260 - Natural Pine, Mixed Deciduous	Poletimber Well	2.9	55	81-110	4 to 6 stick jack pine. Hemlock, fir, and white spruce in overstory. AT and T small building at southwest edge of stand.
40	4111 - S.Maple, Hard Mast Association	Sawtimber Well	52.9	86	81-110	Thinned 1990-91 Permit # 1-89-1. Thinned 2009 permit #012-07-01. West hilly, east flat. Diverse with nice hemlock groves in stand along with nice oak. More fir and ironwood in understory to west side of stand, and heavier sugar maple regeneration to east side. Some raspberry.
41	4131 - Aspen, Oak	Sapling Well	72.7	23	Immature	CUT 1992, permit#1-89-1. 1 to 2 stick aspen. Good red and white pine regeneration in areas. White pine supercanopy trees present. White spruce, white birch, and sugar maple saplings found. Red pine and white birch poletimber in low numbers.
42	4134 - Aspen, Spruce/Fir	Sapling Well	43.5	19	Immature	Cut under permit #38-94-1 in 1996. Scattered white pine residual 8-10" dbh, some larger. Scattered oak left. Some white and red pine seeding in. Some red maple residual 5-8" dbh. Some of stand is F3.
43	61299 - Mixed Swamp Conifer (OI)	Poletimber Well	19.5	112	51-80	OPIC - FMD: Mix of Q, E and C. Thick and sparse areas. All wetland with wetter swales that parallel river.
44	41199 - Northern Hardwood (OI)	Poletimber Well	11.2	80	81-110	OPIC - FMD: Steep bank on NW side. Most of the stand is riverbank sometimes narrow but high ground. Mix of hardwood and open mostly but cedar, spruce and fir mixed in too. South is more spruce/fir or white birch but stand is mostly hardwood.
45	4141 - Birch (OI)	Poletimber Well	9.0	84	111-140	OPIC - FMD: Stand is mostly a high steep ancient riverback. A couple of acres on top are flat and a couple acres at the bottom are flat but becomes wet right away in most areas. Birch is showing mortality and dieback. Aspen is large and mostly bigtooth. Converting to hardwood. Some oak.
46	61299 - Mixed Swamp Conifer (OI)	Sawtimber Well	3.5	96	81-110	Large hemlock and cedar in stand. Vernal ponds. Wet and dry swales. Green ash, yellow birch, cedar, maple, white birch and other species in overstory. Stand adjacent to Escanaba River.
47	41199 - Northern Hardwood (OI)	Poletimber Well	5.5	80	81-110	Stand is mostly northern hardwood but a mix of w. birch and big hemlock also. Stand adjacent to Escanaba River. Previous exam showed sugar maple, red maple, paper birch, cedar, and hemlock in overstory.



	Level 4 Cover Type	Size Density	Acres	Stand Age	BA Range	General Comments:
48	4134 - Aspen, Spruce/Fir	Sapling Well	8.0	20	Immature	This stand was harvested in 1988 permit #44-88-01. Stand is well-stocked A3. Center and north are more sparsely stocked. white pine, balsam poplar, and red maple saplings present.
49	6120 - Lowland Cedar	Sawtimber Well	9.3	114	81-110	Stand is in biodiversity stewardship to protect riparian values of stand and Escanaba river. Stand contains the steep bank of upland which descends to wetland along river. Wet seeps and springs in stand. White birch poletimber found. Red maple saplings present.
50	4130 - Aspen	Poletimber Well	1.0	38	51-80	Small stand north of Southgate Road. Should consider disposing of this small parcel (less than 1 acre) as no adjacent state land north of South Gate Rd.
53	42200 - Natural White Pine	Sawtimber Medium	3.6	100	51-80	This stand was cut in 1990 with all species but pine removed. Pine is large with thick and sparse areas, mostly well-stocked.
55	42220 - Natural Jack Pine	Poletimber Well	0.4	46	51-80	Apparent survey posts along east side of this block of state land would indicate that the property line is west of the edge of the adjacent lake. Stand is buffer for lake.
56	4133 - Aspen, Mixed Pine	Sapling Well	2.5	38	Unspecified	This area was not planted with adjacent R6 stand although harvested at the same time.
58	42200 - Natural White Pine	Poletimber Medium	1.7	80	1-50	White pine crowns vigorous. Patches of alder. Blueberry and Labrador tea. Trembling aspen and red pine are infrequent overstory associates. White pine saplings present.
60	4134 - Aspen, Spruce/Fir	Sapling Poor	5.9	7	Immature	Stand harvested in 2008 under permit #32-013-07-01. Fully stocked. Low numbers of residual red and white pine poletimber.
64	42220 - Natural Jack Pine	Poletimber Well	5.6	46	81-110	Mostly 2- 4 stick jack pine. Mortality and top die-back of jack pine indicate that it is managerially desirable to harvest now.
68	6120 - Lowland Cedar	Poletimber Well	1.4	95	81-110	Creek passes through stand.
70	42210 - Natural Red Pine	Poletimber Medium	1.7	37	1-50	Stunted, rapidly tapering red and jack pine. Sweetfern and blueberry abundant. Serviceberry.
71	42290 - Natural Mixed Pine	Sawtimber Well	2.4	100	111-140	Stand of large pine east of Gwinn DNR field office. Some hemlock and cedar in overstory. High scenic and recreation values within an urban setting. Deer runways heavily used in stand throughout winter. Many Legacy pines.
72	42290 - Natural Mixed Pine	Sawtimber Well	1.8	100	111-140	Stand of large pine east of Gwinn DNR field office. Some hemlock and cedar in overstory. High scenic and recreation values within an urban setting. Deer runways heavily used in stand throughout winter. Many Legacy pines.



Stand	Cover Type	Acres	Managed Site	General Comments:
2	7909 - Nonstocked (OI)	11.3	No	CO RD 553 and right-of-way. ATV trails run along both sides of Co Rd 553.
4	6299 - Lowland Shrub (OI)	21.4	No	Halfway creek floodplain. Alder.
7	3302 - Low Density Conifer Trees	1.5	No	Some old refuse dumps. Scattered jack pine poletimber present.
16	6224 - Treed Bog	2.7	No	Leatherleaf and Sphagnum moss. Sparse black spruce, tamarack, and jack pine saplings.
17	500 - Water	1.7	No	OPIC - FMD: S4S2 -Bog with non-merchantable trees. Around pond.
19	6299 - Lowland Shrub (OI)	3.0	No	Lowland brush with some N in former beaver flooded areas. Protect riparian values along this creek. Fringe of overstory spruce and fir along east edge. Tag alder very dense to south. Some red-osier dogwood present. Deer runways. Cedar, white birch, fir, and black spruce saplings present. Infrequent black spruce and small cedar poletimber.
21	6220 - Alder/willow	3.8	No	OPIC - FMD: C4C2L unproductive. Alder thick in spots. Flooded and some mortality in spots. Some small ash here and there.
25	7909 - Nonstocked (OI)	1.6	No	Serenity Drive.
28	3102 - Grass	1.8	No	Powerline right-of-way.
29	3102 - Grass	5.6	No	Powerline right-of-way. Becomes rocky at west end.
34	7909 - Nonstocked (OI)	4.0	No	Co Rd 557 AND Knudsen Rd.
37	7109 - Sand (OI)	1.1	No	Active sand/gravel pit.
39	7909 - Nonstocked (OI)	1.1	No	Serenity Drive.
51	7909 - Nonstocked (OI)	0.7	No	Southgate drive.
52	7909 - Nonstocked (OI)	1.1	No	Road.
54	7909 - Nonstocked (OI)	0.5	No	There is a private building here with an easement.
59	62259 - Bog (OI)	0.6	No	



Stand	Cover Type	Acres	Managed Site	General Comments:
61	3203 - Upland Blueberry	4.0	No	Invading jack pine.
62	3203 - Upland Blueberry	0.8	No	Sedge and blueberry with invading jack pine.
65	3203 - Upland Blueberry	4.1	No	Road right-of-way.
66	122 - Road/Parking Lot	2.4	No	Gwinn DNR Field Office and associated buildings/parking lot.
67	6299 - Lowland Shrub (OI)	1.1	No	Creek floodplain.
69	7209 - Exposed Rock (OI)	3.3	No	This area mostly rock outcrop.
400	31029 - Grass (OI)	3.7	No	Sedge, sweetfern, and blueberry. Scattered jack pine.
402	31029 - Grass (OI)	3.7	No	Slowly filling in with 1/2 stick jack pine. Blueberry.
403	31029 - Grass (OI)	6.0	No	Powerline ROW. High level of ORV usage.
404	3203 - Upland Blueberry	3.7	No	Powerline ROW. Heavily used ORV trail.