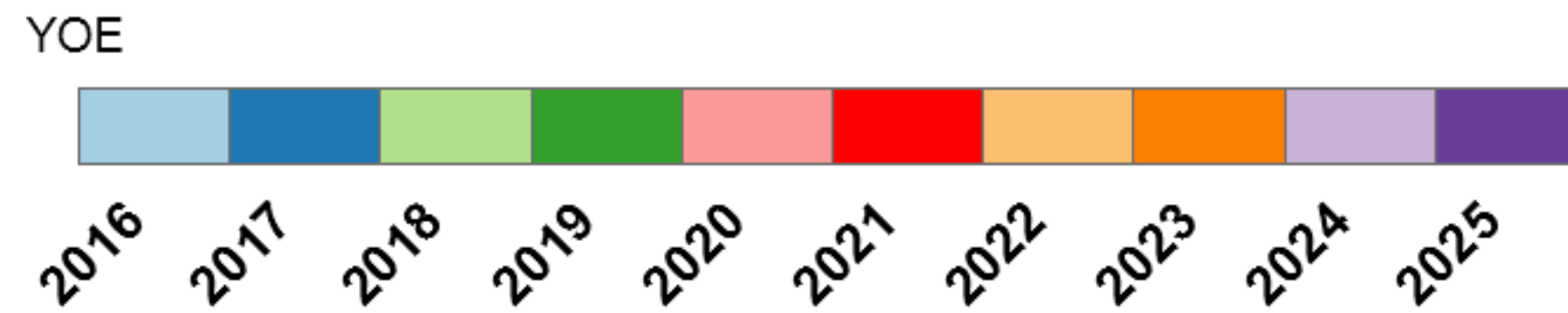


58 Compartment Number
 ----- = -----
 2010 Year of Entry

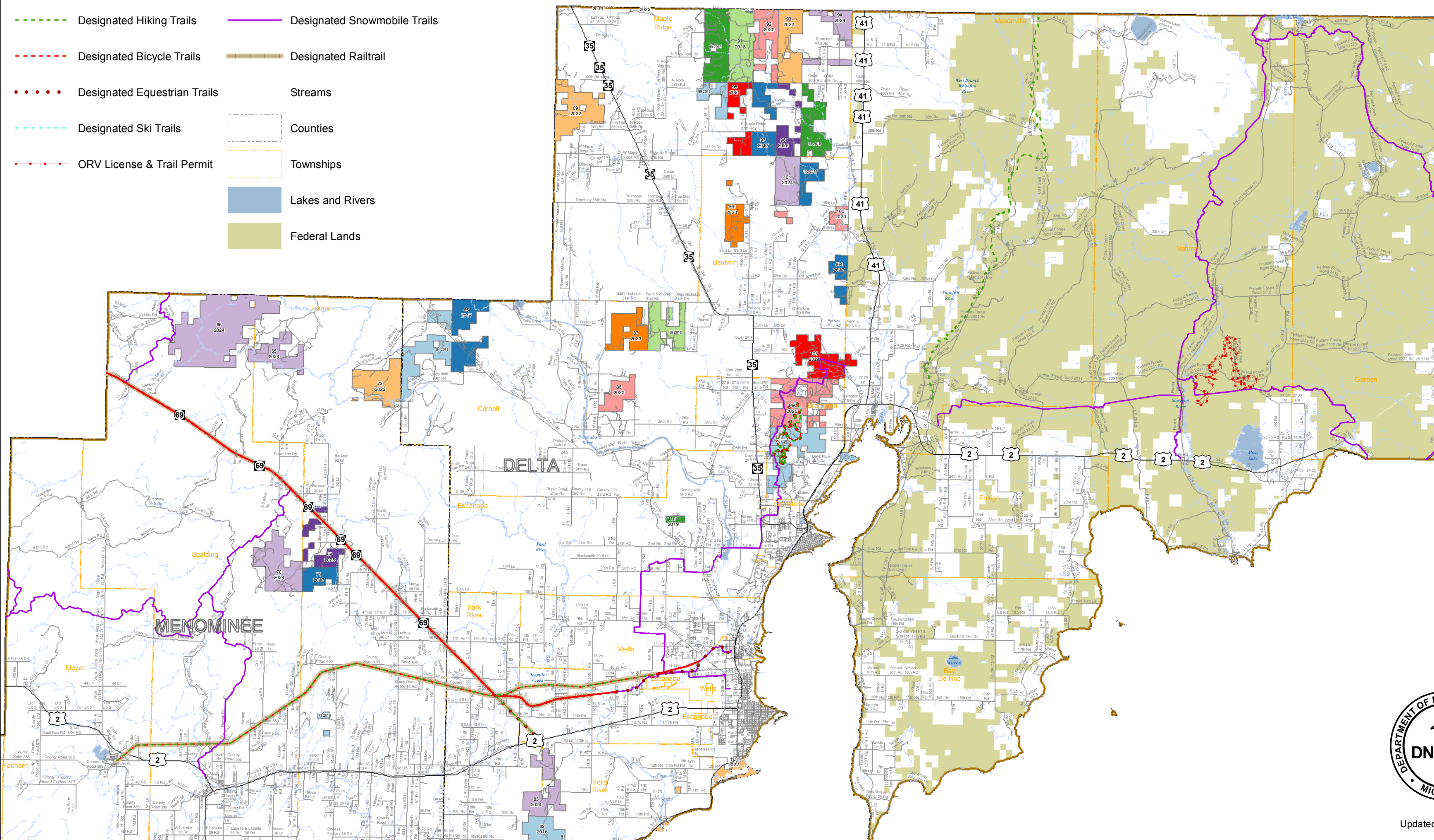
Year of Entry (YOE) represents the fiscal year treatments will be initiated. Treatment decisions are made approximately 1-2 years before the Year of Entry. Example: For a 2010 YOE compartment, a treatment decision is made in the calendar year of 2008.

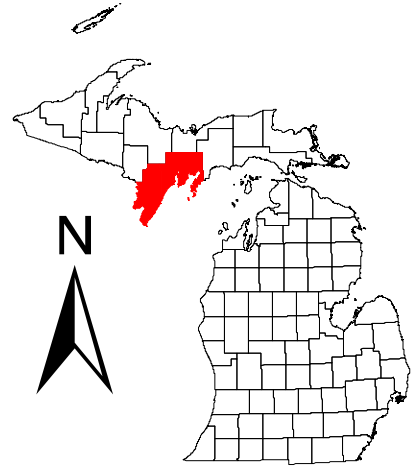
Escanaba Management Unit (North) State Forest Compartments by Year of Entry



Legend

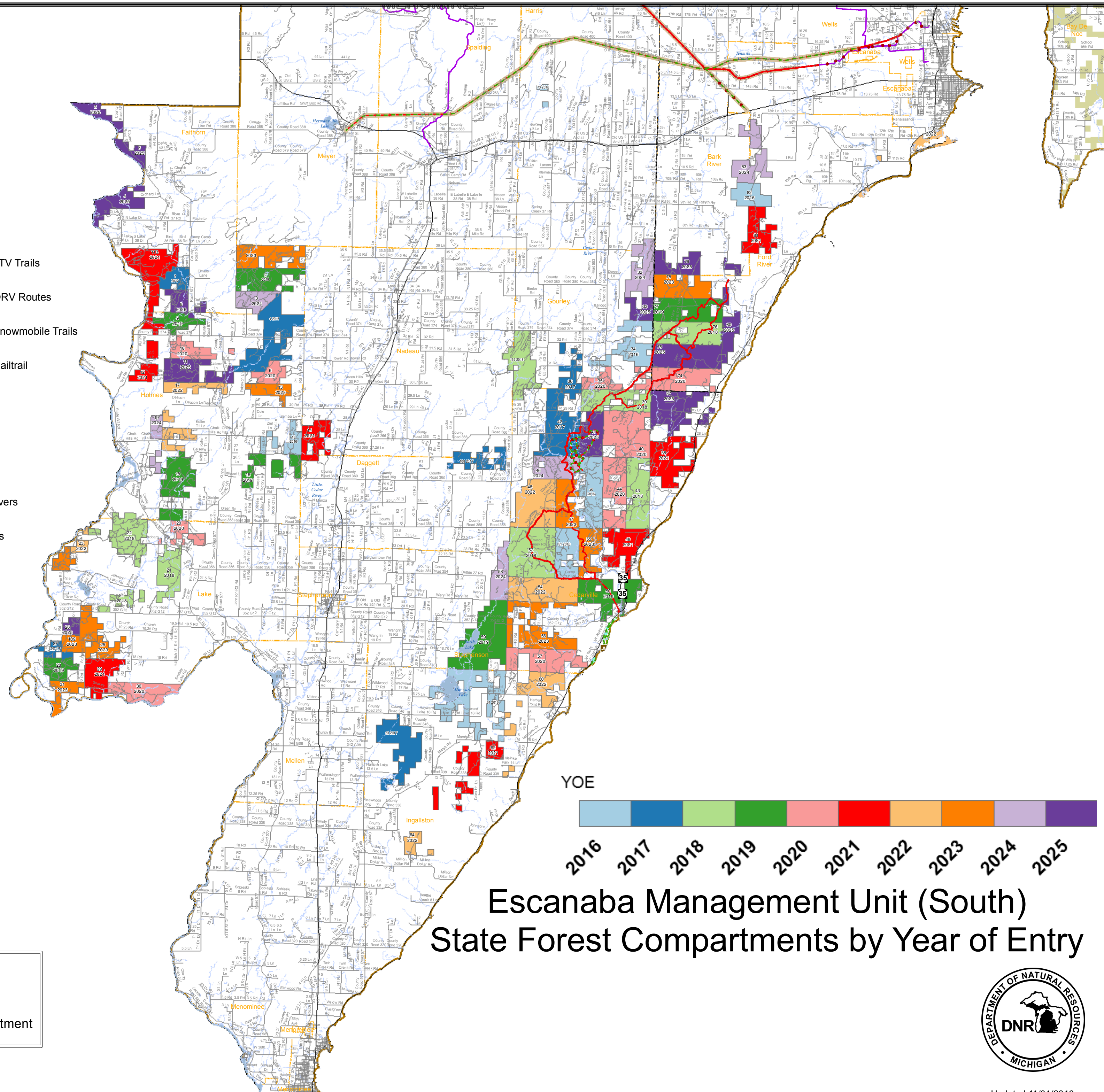
- Highway
- Roads
- - - - Designated Hiking Trails
- - - - Designated Bicycle Trails
- Designated Equestrian Trails
- - - - Designated Ski Trails
- ORV License & Trail Permit
- Designated ATV Trails
- - - - Designated ORV Routes
- Designated Snowmobile Trails
- Designated Railtrail
- Streams
- - - - Counties
- - - - Townships
- Lakes and Rivers
- Federal Lands





Legend

- State Park Campgrounds
- Designated ATV Trails
- Highway
- Designated ORV Routes
- Roads
- Designated Snowmobile Trails
- Designated Hiking Trails
- Designated Railtrail
- Designated Bicycle Trails
- Streams
- Designated Equestrian Trails
- Counties
- Townships
- Lakes and Rivers
- Federal Lands



58 Compartment Number
 ----- = -----
 2010 Year of Entry

Year of Entry (YOE) represents the fiscal year treatments will be initiated. Treatment decisions are made approximately 1-2 years before the Year of Entry. Example: For a 2010 YOE compartment, a treatment decision is made in the calendar year of 2008.

YOE

**Escanaba Management Unit (South)
 State Forest Compartments by Year of Entry**

