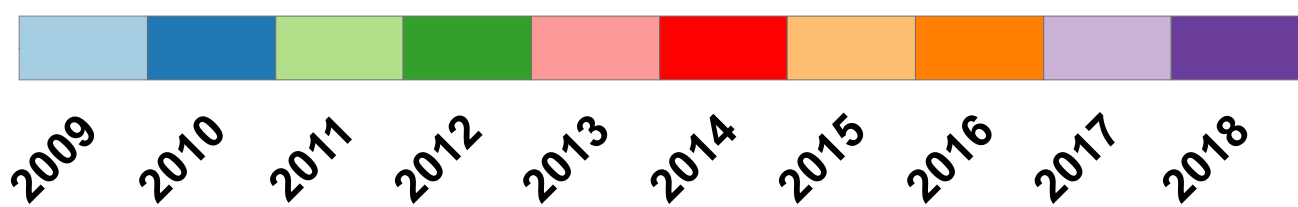


Legend

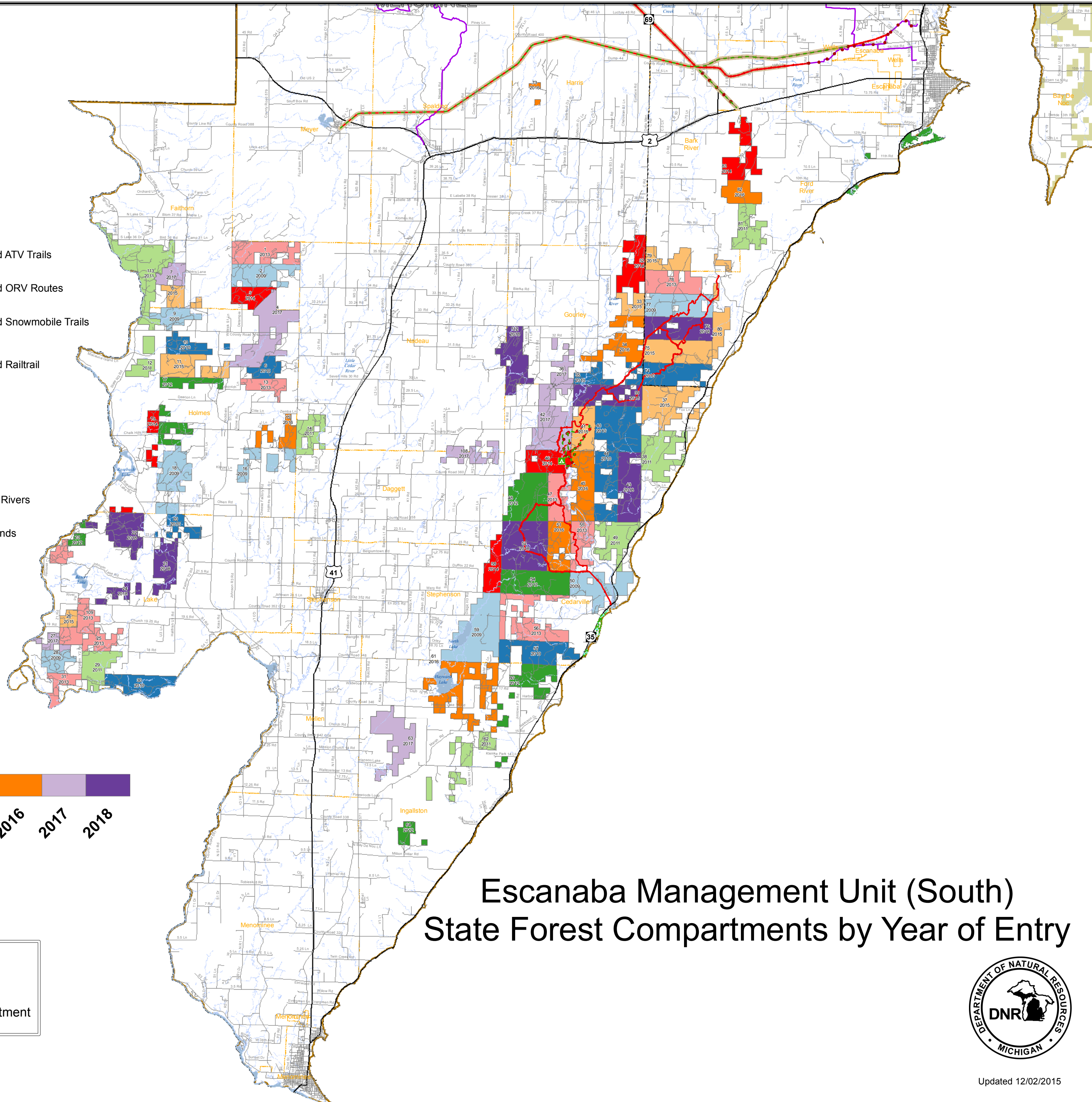
- State Forest Campground
- State Park Campgrounds
- Highway
- Roads
- Designated Hiking Trails
- Designated Bicycle Trails
- Designated Equestrian Trails
- Designated Ski Trails
- ORV License & Trail Permit
- Designated ATV Trails
- Designated ORV Routes
- Designated Snowmobile Trails
- Designated Railtrail
- Streams
- Counties
- Townships
- Lakes and Rivers
- Federal Lands

Year of Entry



$$\frac{58}{2010} = \frac{\text{Compartment Number}}{\text{Year of Entry}}$$

Year of Entry (YOE) represents the fiscal year treatments will be initiated. Treatment decisions are made approximately 1-2 years before the Year of Entry. Example: For a 2010 YOE compartment, a treatment decision is made in the calendar year of 2008.



Escanaba Management Unit (South) State Forest Compartments by Year of Entry

