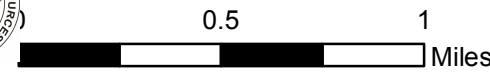
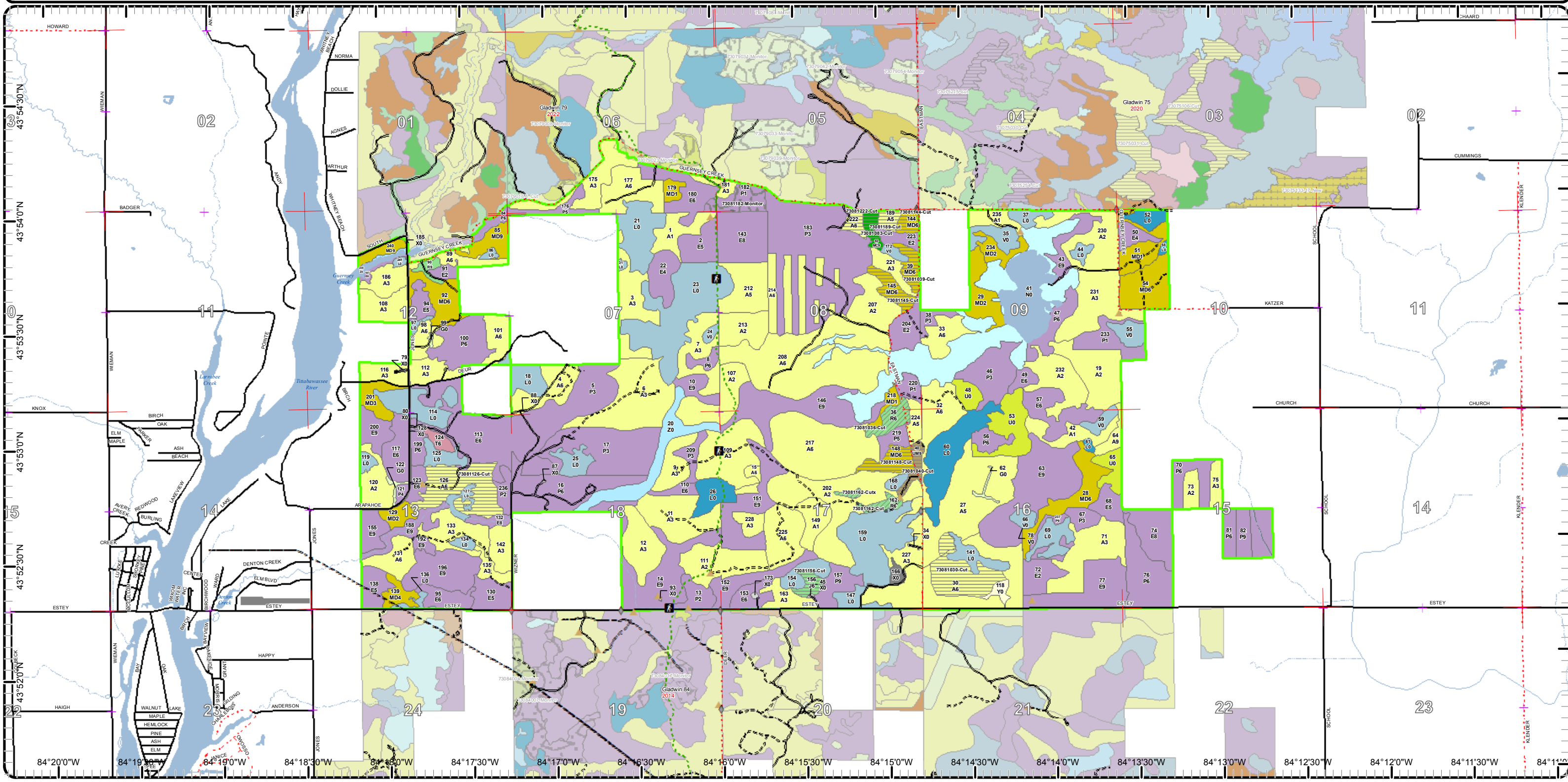


# Cover Type & Treatments Map

Compartment: 81  
 T17N - R01E Sec. 12,13  
 T17N - R02E Sec. 07-10, 15-18  
 County: Gladwin  
 Unit: Gladwin  
 Mgmt Area: Gladwin Lake Plain  
 YOE: 2021  
 Acres: 4,558 GIS Calculated  
 Examiner: Chris Wasserman  
 Map Revised: 10/28/2019  
 Map Phase: Post-Review



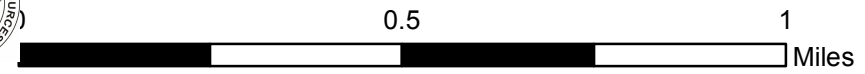
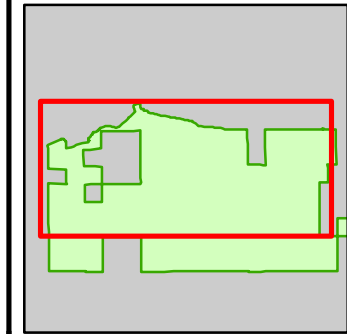
- Miris Corners
- + Remonumented Section Corners
- ◆ Field Grade Corners
- Counties
- DNR - Secondary Forest Road
- DNR - Forest Access Route
- Federal / State / County - Paved Road
- Federal / State - Dirt / Gravel Road
- County - Gravel Road
- Private - Dirt / Gravel Road
- Hiking Trails
- - - Designated Hiking Trails
- ▲ Berms
- Intermittent Stream
- Lake/Pond
- Perennial River
- Lakes and Rivers
- Pipeline
- Airports
- Compartment Boundary
- Clearcut (w/Reserves)
- Thinning (Crown, Low, Systematic)
- Regeneration Survey
- 612 - Lowland Coniferous Forest
- 110 - Low Intensity Urban
- 122 - Roads/Parking Lot
- 310 - Herbaceous Openland
- 330 - Low Density Trees
- 500 - Water
- 622 - Lowland Shrub
- 623 - Emergent Wetland
- 629 - Mixed non-forested wetland
- 710 - Sand/Soil
- 413 - Aspen
- 419 - Mixed Upland Deciduous
- 421 - Planted Pines
- 422 - Natural Pines
- 430 - Upland Mixed Forest
- 611 - Lowland Deciduous Forest



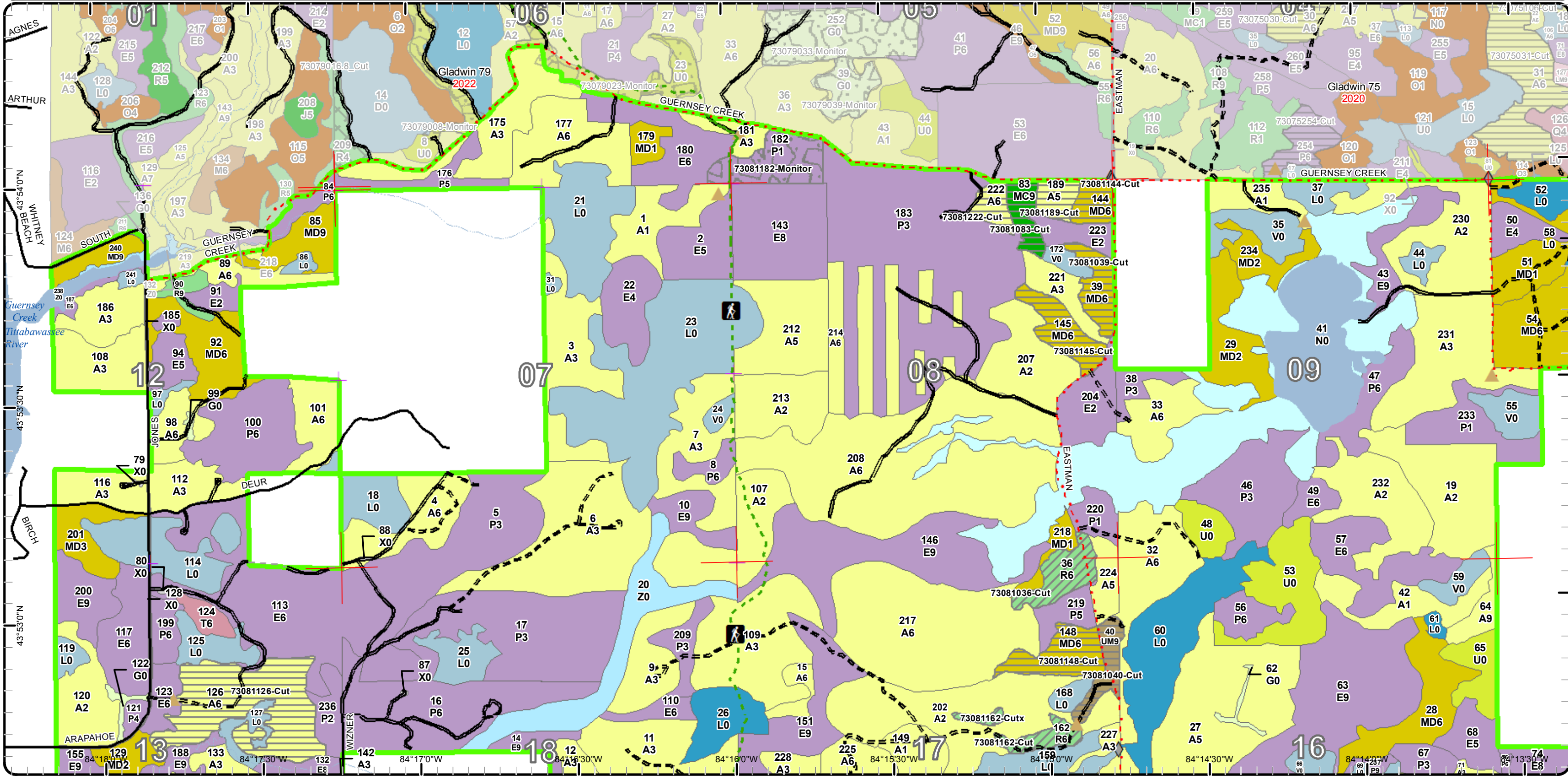


# Cover Type & Treatments Map

Compartment: 81  
 T17N - R01E Sec. 12,13  
 T17N - R02E Sec. 07-10, 15-18  
 County: Gladwin  
 Unit: Gladwin  
 Mgmt Area: Gladwin Lake Plain  
 YOE: 2021  
 Acres: 4,558 GIS Calculated  
 Examiner: Chris Wasserman  
 Map Revised: 10/28/2019  
 Map Phase: Post-Review

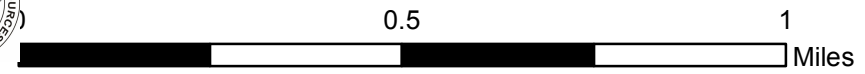


- Miris Corners
- + Remonumented Section Corners
- ◆ Field Grade Corners
- Counties
- DNR - Secondary Forest Road
- DNR - Forest Access Route
- Federal / State / County - Paved Road
- Federal / State - Dirt / Gravel Road
- County - Gravel Road
- Private - Dirt / Gravel Road
- Hiking Trails
- Designated Hiking Trails
- ▲ Berms
- Intermittent Stream
- Lake/Pond
- Perennial River
- Lakes and Rivers
- Compartment Boundary
- Clearcut (w/Reserves)
- Thinning (Crown, Low, Systematic)
- Regeneration Survey
- 122 - Roads/Parking Lot
- 310 - Herbaceous Openland
- 330 - Low Density Trees
- 500 - Water
- 622 - Lowland Shrub
- 623 - Emergent Wetland
- 629 - Mixed non-forested wetland
- 413 - Aspen
- 419 - Mixed Upland Deciduous
- 421 - Planted Pines
- 422 - Natural Pines
- 430 - Upland Mixed Forest
- 611 - Lowland Deciduous Forest
- 612 - Lowland Coniferous Forest
- 110 - Low Intensity Urban

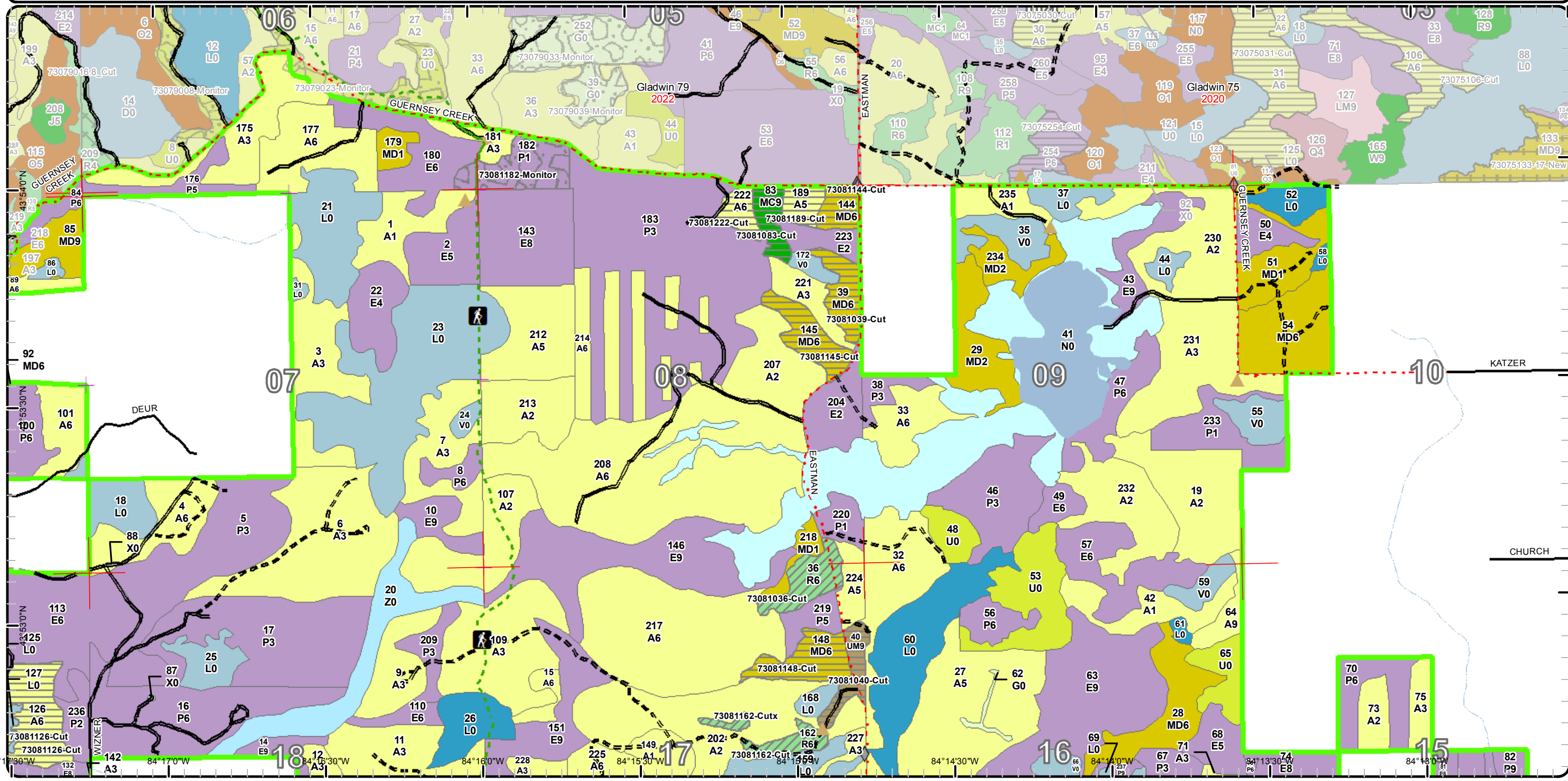


# Cover Type & Treatments Map

Compartment: 81  
 T17N - R01E Sec. 12,13  
 T17N - R02E Sec. 07-10, 15-18  
 County: Gladwin  
 Unit: Gladwin  
 Mgmt Area: Gladwin Lake Plain  
 YOE: 2021  
 Acres: 4,558 GIS Calculated  
 Examiner: Chris Wasserman  
 Map Revised: 10/28/2019  
 Map Phase: Post-Review



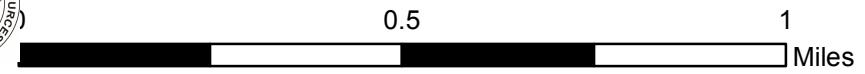
- Miris Corners
- + Remonumented Section Corners
- ◆ Field Grade Corners
- Counties
- DNR - Secondary Forest Road
- DNR - Forest Access Route
- Federal / State / County - Paved Road
- County - Gravel Road
- Private - Dirt / Gravel Road
- ▲ Hiking Trails
- - - Designated Hiking Trails
- ▲ Berms
- Intermittent Stream
- Lake/Pond
- Lakes and Rivers
- Compartment Boundary
- Clearcut (w/Reserves)
- Thinning (Crown, Low, Systematic)
- Regeneration Survey
- 413 - Aspen
- 419 - Mixed Upland Deciduous
- 421 - Planted Pines
- 422 - Natural Pines
- 430 - Upland Mixed Forest
- 611 - Lowland Deciduous Forest
- 110 - Low Intensity Urban
- 310 - Herbaceous Openland
- 330 - Low Density Trees
- 500 - Water
- 622 - Lowland Shrub
- 623 - Emergent Wetland
- 629 - Mixed non-forested wetland



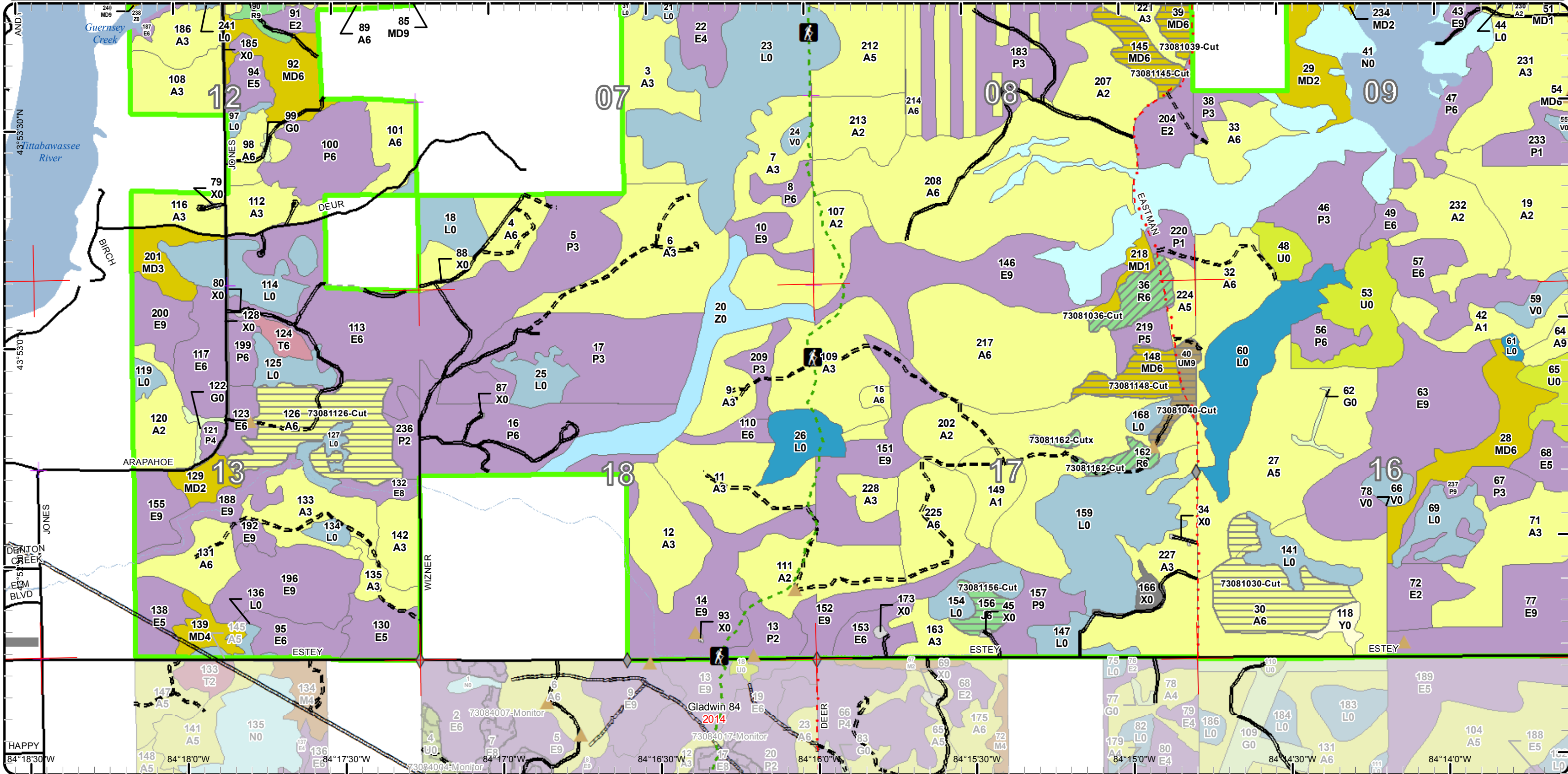


# Cover Type & Treatments Map

Compartment: 81  
 T17N - R01E Sec. 12,13  
 T17N - R02E Sec. 07-10, 15-18  
 County: Gladwin  
 Unit: Gladwin  
 Mgmt Area: Gladwin Lake Plain  
 YOE: 2021  
 Acres: 4,558 GIS Calculated  
 Examiner: Chris Wasserman  
 Map Revised: 10/28/2019  
 Map Phase: Post-Review



- Miris Corners
- + Remonumented Section Corners
- ◆ Field Grade Corners
- Counties
- DNR - Secondary Forest Road
- DNR - Forest Access Route
- Federal / State / County - Paved Road
- Federal / State - Dirt / Gravel Road
- County - Gravel Road
- Private - Dirt / Gravel Road
- Hiking Trails
- - - Designated Hiking Trails
- ▲ Berms
- - - Intermittent Stream
- Lake/Pond
- Perennial River
- Lakes and Rivers
- Pipeline
- Airports
- Compartment Boundary
- Clearcut (w/Reserves)
- Thinning (Crown, Low, Systematic)
- 413 - Aspen
- 419 - Mixed Upland Deciduous
- 421 - Planted Pines
- 430 - Upland Mixed Forest
- 611 - Lowland Deciduous Forest
- 612 - Lowland Coniferous Forest
- 110 - Low Intensity Urban
- 122 - Roads/Parking Lot
- 310 - Herbaceous Openland
- 330 - Low Density Trees
- 500 - Water
- 622 - Lowland Shrub
- 623 - Emergent Wetland
- 629 - Mixed non-forested wetland
- 710 - Sand/Soil



Geographic coordinates: 43°53'30"N, 84°18'0"W, 84°17'30"W, 84°17'0"W, 84°16'30"W, 84°16'0"W, 84°15'30"W, 84°15'0"W, 84°14'30"W, 84°14'0"W

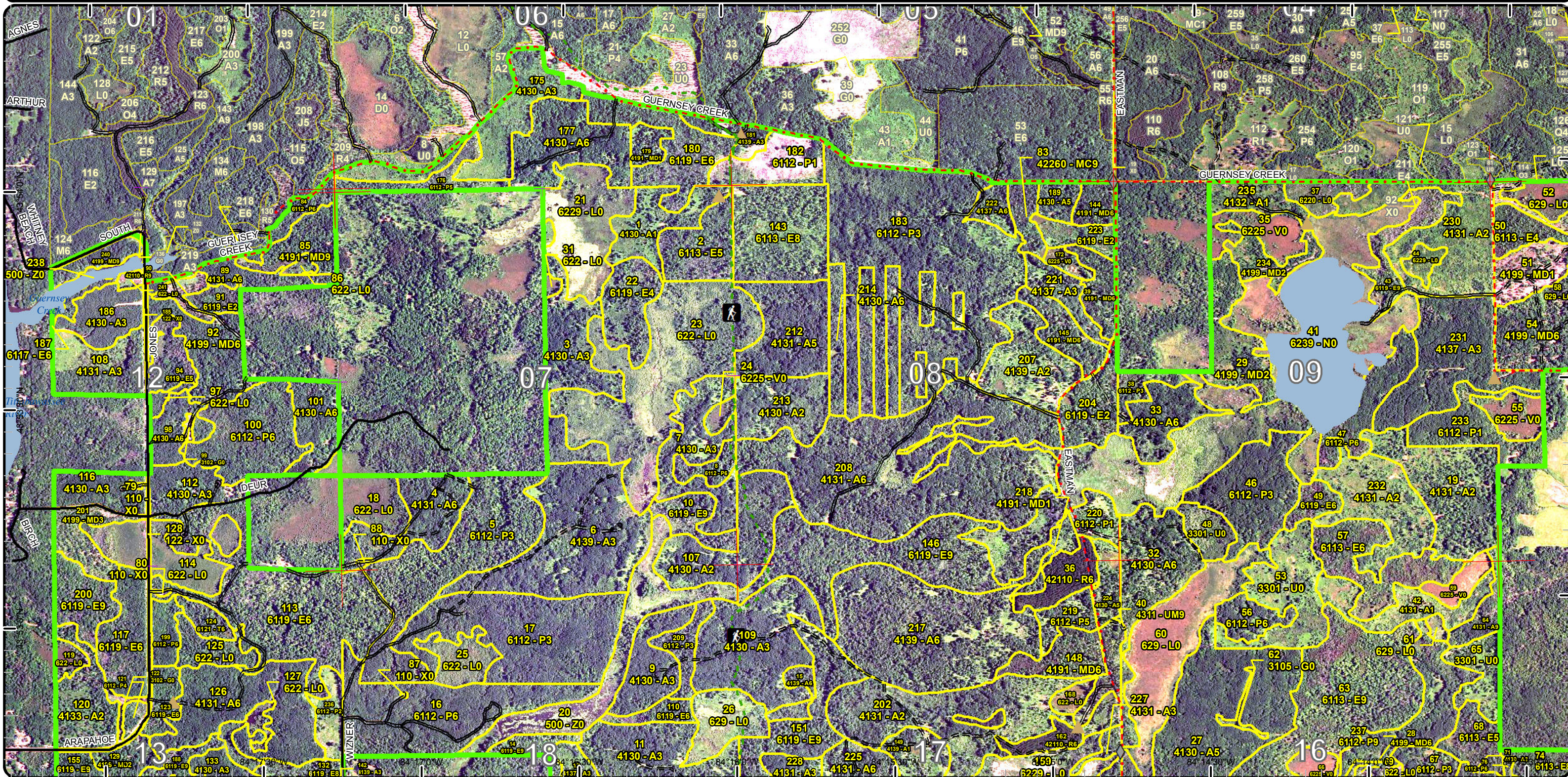


# Stand Boundary Map

Compartment: 81  
 T17N - R01E Sec. 12,13  
 T17N - R02E Sec. 07-10, 15-18  
 County: Gladwin  
 Unit: Gladwin  
 Mgmt Area: Gladwin Lake Plain  
 YOE: 2021  
 Acres: 4,558 GIS Calculated  
 Examiner: Chris Wasserman  
 Map Revised: 10/28/2019  
 Map Phase: Post-Review



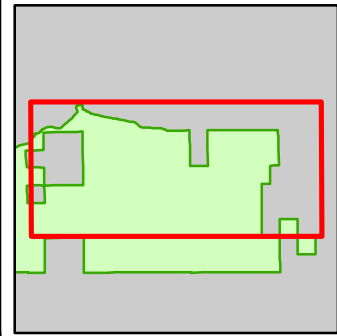
- Miris Corners
- + Remonumented Section Corners
- ◆ Field Grade Corners
- Counties
- DNR - Secondary Forest Road
- DNR - Forest Access Route
- Federal / State / County - Paved Road
- Federal / State - Dirt / Gravel Road
- County - Gravel Road
- Private - Dirt / Gravel Road
- ⤴ Hiking Trails
- Designated Hiking Trails
- ▲ Berms
- Intermittent Stream
- Lake/Pond
- Perennial River
- Lakes and Rivers
- Compartment Boundary
- Stand Boundaries
- 330 - Low Density Trees
- 500 - Water
- 622 - Lowland Shrub
- 623 - Emergent Wetland
- 629 - Mixed non-forested wetland
- 413 - Aspen
- 419 - Mixed Upland Deciduous
- 421 - Planted Pines
- 422 - Natural Pines
- 430 - Upland Mixed Forest
- 611 - Lowland Deciduous Forest
- 612 - Lowland Coniferous Forest
- 110 - Low Intensity Urban
- 122 - Roads/Parking Lot
- 310 - Herbaceous Openland



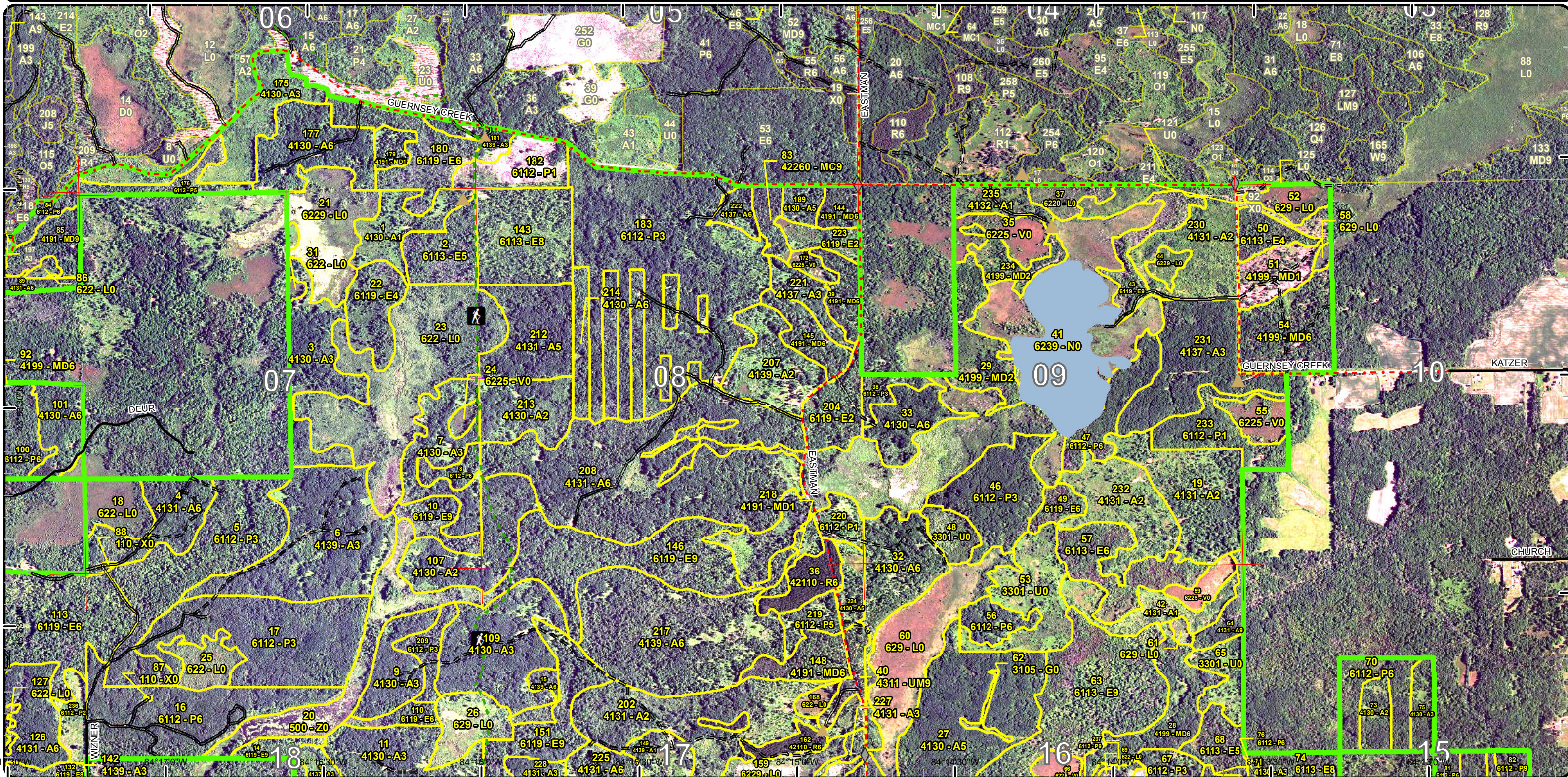


# Stand Boundary Map

Compartment: 81  
 T17N - R01E Sec. 12,13  
 T17N - R02E Sec. 07-10, 15-18  
 County: Gladwin  
 Unit: Gladwin  
 Mgmt Area: Gladwin Lake Plain  
 YOE: 2021  
 Acres: 4,558 GIS Calculated  
 Examiner: Chris Wasserman  
 Map Revised: 10/28/2019  
 Map Phase: Post-Review



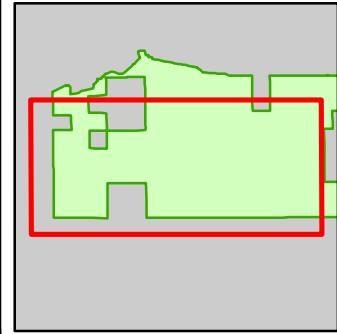
- Miris Corners
- + Remonumented Section Corners
- ◆ Field Grade Corners
- Counties
- DNR - Secondary Forest Road
- DNR - Forest Access Route
- Federal / State / County - Paved Road
- County - Gravel Road
- Private - Dirt / Gravel Road
- 🚶 Hiking Trails
- Designated Hiking Trails
- ▲ Berms
- Intermittent Stream
- Lake/Pond
- Lakes and Rivers
- Compartment Boundary
- Stand Boundaries
- 413 - Aspen
- 419 - Mixed Upland Deciduous
- 421 - Planted Pines
- 422 - Natural Pines
- 430 - Upland Mixed Forest
- 611 - Lowland Deciduous Forest
- 110 - Low Intensity Urban
- 310 - Herbaceous Openland
- 330 - Low Density Trees
- 500 - Water
- 622 - Lowland Shrub
- 623 - Emergent Wetland
- 629 - Mixed non-forested wetland



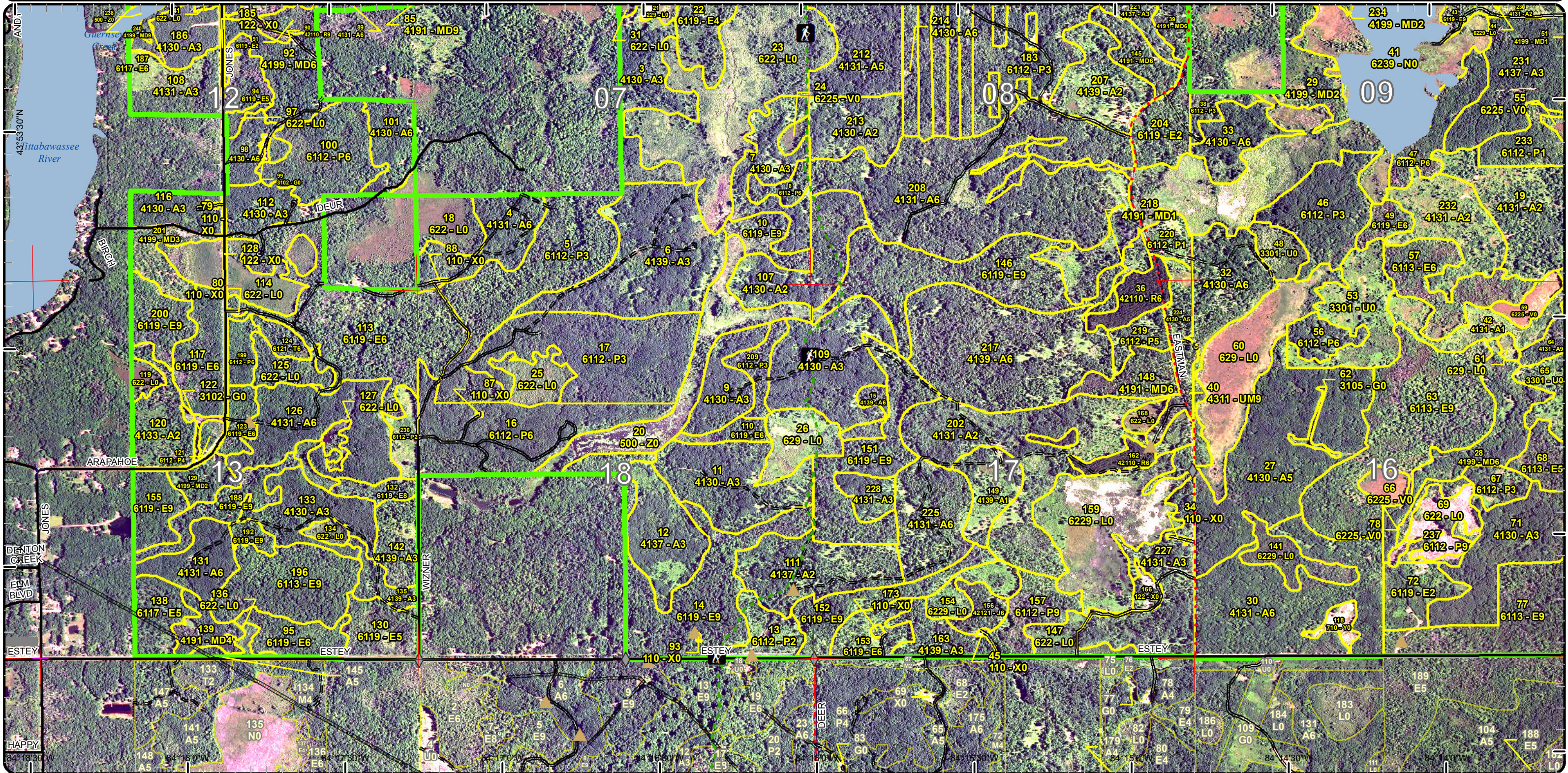


# Stand Boundary Map

Compartment: 81  
 T17N - R01E Sec. 12,13  
 T17N - R02E Sec. 07-10, 15-18  
 County: Gladwin  
 Unit: Gladwin  
 Mgmt Area: Gladwin Lake Plain  
 YOE: 2021  
 Acres: 4,558 GIS Calculated  
 Examiner: Chris Wasserman  
 Map Revised: 10/28/2019  
 Map Phase: Post-Review



- Miris Corners
- + Remonumented Section Corners
- ◆ Field Grade Corners
- Counties
- DNR - Secondary Forest Road
- DNR - Forest Access Route
- Federal / State / County - Paved Road
- Federal / State - Dirt / Gravel Road
- County - Gravel Road
- Private - Dirt / Gravel Road
- ▲ Hiking Trails
- Designated Hiking Trails
- ▲ Berms
- Intermittent Stream
- Lake/Pond
- Perennial River
- Lakes and Rivers
- Pipeline
- Airports
- Compartment Boundary
- Stand Boundaries
- 310 - Herbaceous Openland
- 330 - Low Density Trees
- 500 - Water
- 622 - Lowland Shrub
- 623 - Emergent Wetland
- 629 - Mixed non-forested wetland
- 710 - Sand/Soil
- 413 - Aspen
- 419 - Mixed Upland Deciduous
- 421 - Planted Pines
- 430 - Upland Mixed Forest
- 611 - Lowland Deciduous Forest
- 612 - Lowland Coniferous Forest
- 110 - Low Intensity Urban
- 122 - Roads/Parking Lot



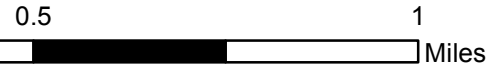
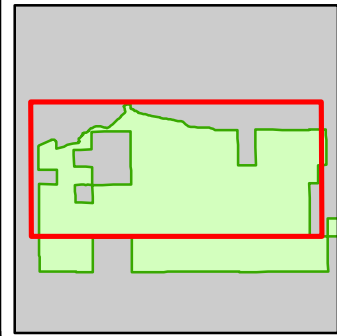




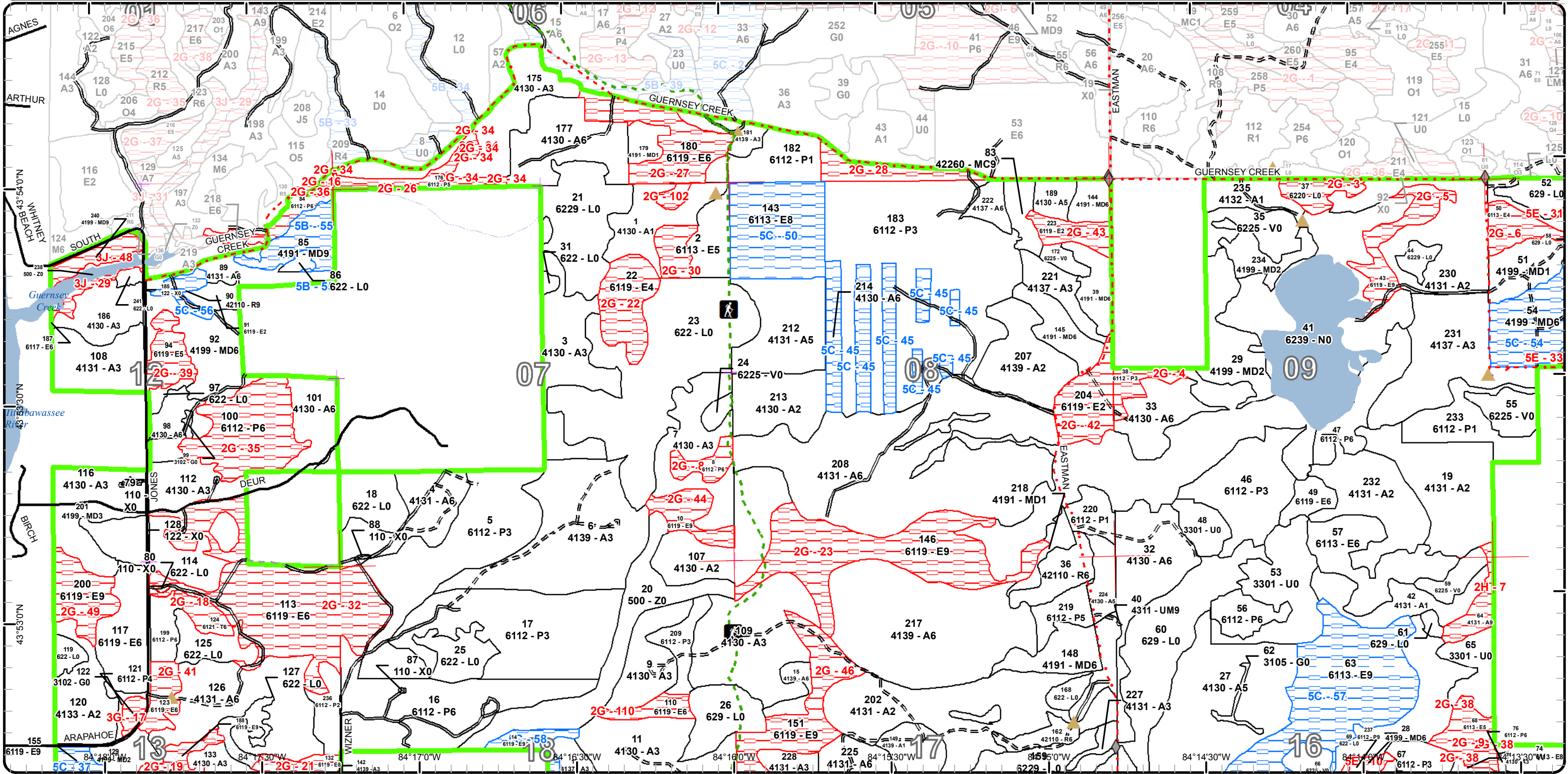


# Special Conservation Areas & Site Conditions Map

Compartment: 81  
 T17N - R01E Sec. 12,13  
 T17N - R02E Sec. 07-10, 15-18  
 County: Gladwin  
 Unit: Gladwin  
 Mgmt Area: Gladwin Lake Plain  
 YOE: 2021  
 Acres: 4,558 GIS Calculated  
 Examiner: Chris Wasserman  
 Map Revised: 10/28/2019  
 Map Phase: Post-Review

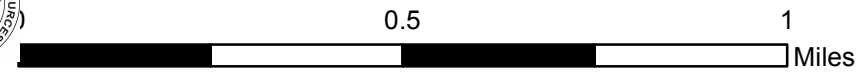
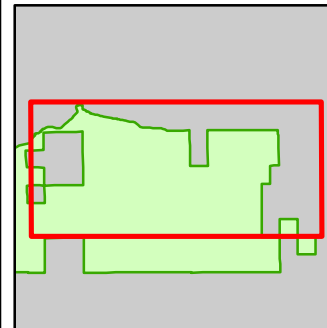


- Miris Corners
- Remonumented Section Corners
- ◆ Field Grade Corners
- ▭ Counties
- DNR - Secondary Forest Road
- == DNR - Forest Access Route
- Federal / State / County - Paved Road
- - Federal / State - Dirt / Gravel Road
- . . County - Gravel Road
- - Private - Dirt / Gravel Road
- 🚶 Hiking Trails
- Designated Hiking Trails
- ▲ Berms
- Intermittent Stream
- Lake/Pond
- Perennial River
- Lakes and Rivers
- ▭ Compartment Boundary
- ▭ Available w/ Constraints
- ▭ Unavailable
- 3J: Water quality / BMPs (stream, river, or lake)
- 5E: Long-Term Retention
- ▭ Stand Boundaries
- 5B: Maintain for regeneration purposes
- 5C: Delay treatment for age/size class diversity or exceptional site quality
- 2G: Too wet (sensitive soils, does not include access issues)
- 2H: Blocked by physical obstacle (e.g. upland stand in a lowland area)
- 3G: Other Influence zones - See comments

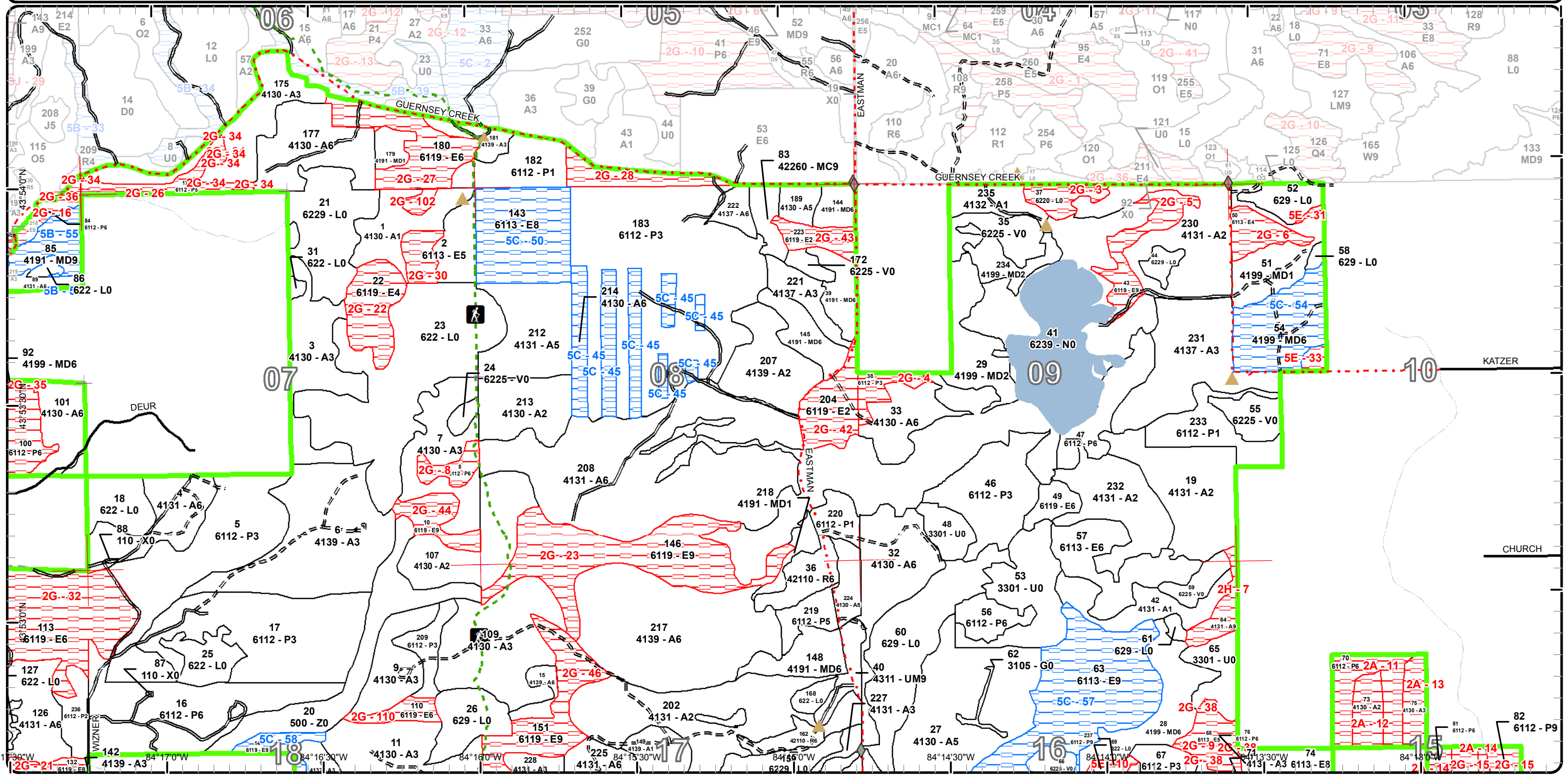


# Special Conservation Areas & Site Conditions Map

Compartment: 81  
 T17N - R01E Sec. 12,13  
 T17N - R02E Sec. 07-10, 15-18  
 County: Gladwin  
 Unit: Gladwin  
 Mgmt Area: Gladwin Lake Plain  
 YOE: 2021  
 Acres: 4,558 GIS Calculated  
 Examiner: Chris Wasserman  
 Map Revised: 10/28/2019  
 Map Phase: Post-Review



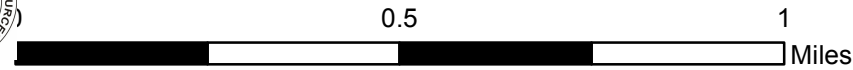
- Miris Corners
- Remonumented Section Corners
- Field Grade Corners
- Counties
- DNR - Secondary Forest Road
- DNR - Forest Access Route
- Federal / State / County - Paved Road
- County - Gravel Road
- Private - Dirt / Gravel Road
- Hiking Trails
- Designated Hiking Trails
- Berms
- Intermittent Stream
- Lake/Pond
- Lakes and Rivers
- Compartment Boundary
- Available w/ Constraints
- Unavailable
- 5B: Maintain for regeneration purposes
- 5C: Delay treatment for age/size class diversity or exceptional site quality
- 2A: Adjacent landowner denied access
- 2G: Too wet (sensitive soils, does not include access issues)
- 2H: Blocked by physical obstacle (e.g. upland stand in a lowland area)
- 5E: Long-Term Retention
- Stand Boundaries



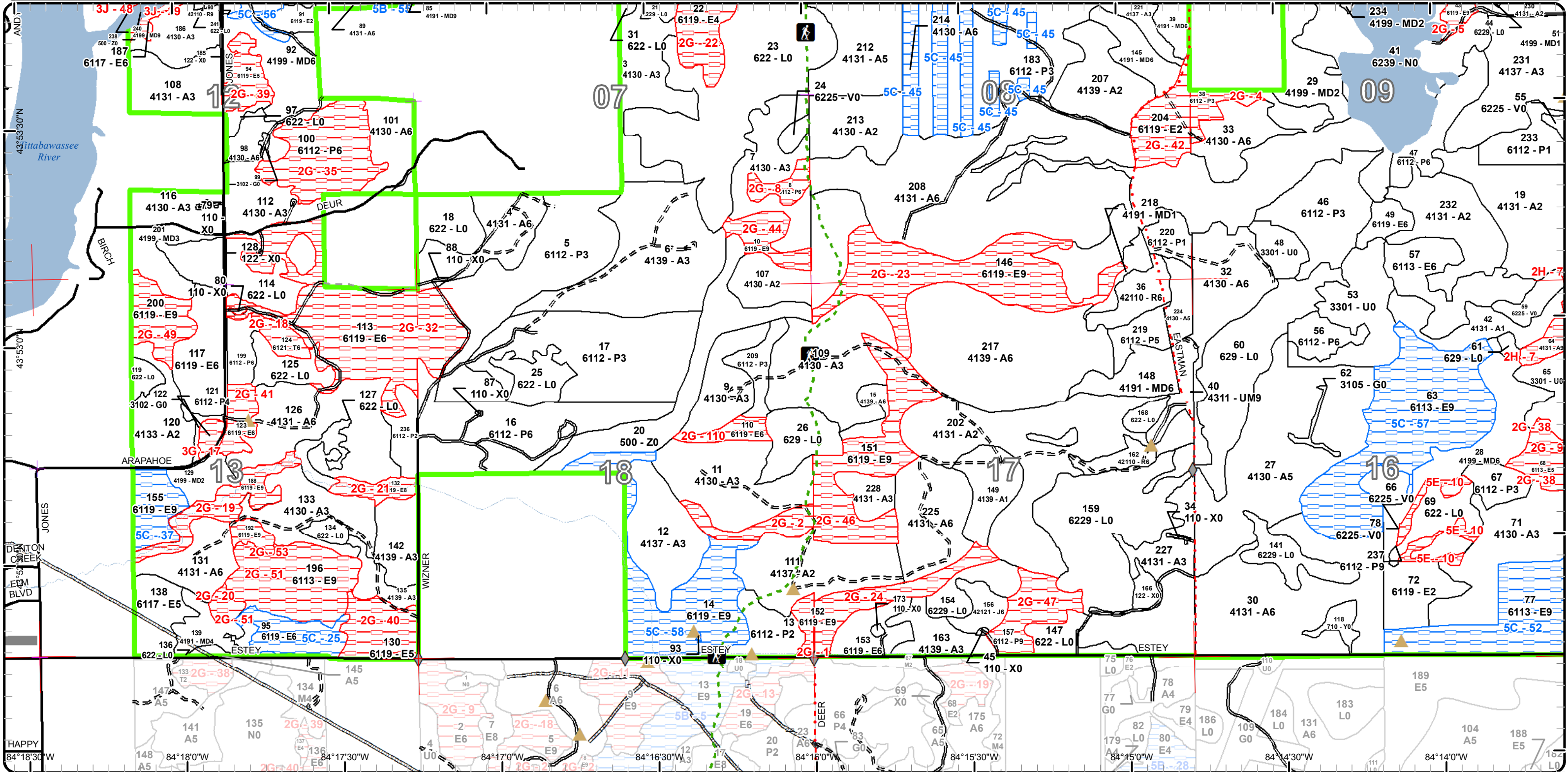


# Special Conservation Areas & Site Conditions Map

Compartment: 81  
 T17N - R01E Sec. 12,13  
 T17N - R02E Sec. 07-10, 15-18  
 County: Gladwin  
 Unit: Gladwin  
 Mgmt Area: Gladwin Lake Plain  
 YOE: 2021  
 Acres: 4,558 GIS Calculated  
 Examiner: Chris Wasserman  
 Map Revised: 10/28/2019  
 Map Phase: Post-Review

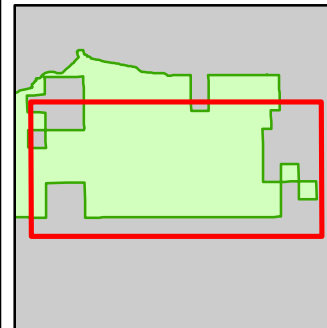


- Miris Corners
- Remonumented Section Corners
- ◆ Field Grade Corners
- ▭ Counties
- DNR - Secondary Forest Road
- == DNR - Forest Access Route
- Federal / State / County - Paved Road
- - Federal / State - Dirt / Gravel Road
- - - County - Gravel Road
- - - Private - Dirt / Gravel Road
- 🚶 Hiking Trails
- Designated Hiking Trails
- ▲ Berms
- Intermittent Stream
- Lake/Pond
- Perennial River
- Lakes and Rivers
- Pipeline
- Airports
- Compartment Boundary
- Available w/ Constraints
- Unavailable
- 3G: Other Influence zones - See comments
- 3J: Water quality / BMPs (stream, river, or lake)
- 5E: Long-Term Retention
- Stand Boundaries
- 5C: Delay treatment for age/size class diversity or exceptional site quality
- 2G: Too wet (sensitive soils, does not include access issues)
- 2H: Blocked by physical obstacle (e.g. upland stand in a lowland area)

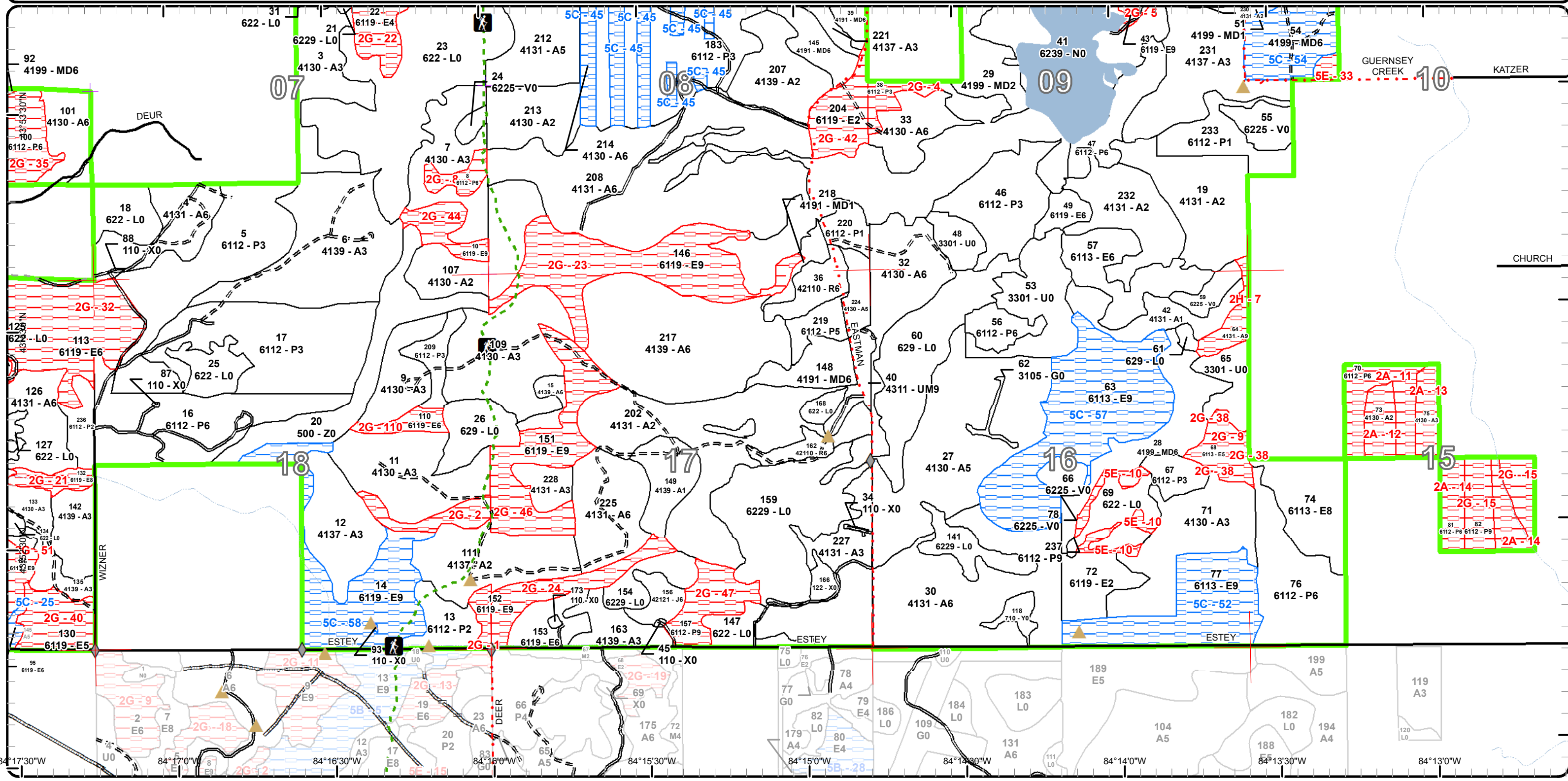


# Special Conservation Areas & Site Conditions Map

Compartment: 81  
 T17N - R01E Sec. 12,13  
 T17N - R02E Sec. 07-10, 15-18  
 County: Gladwin  
 Unit: Gladwin  
 Mgmt Area: Gladwin Lake Plain  
 YOE: 2021  
 Acres: 4,558 GIS Calculated  
 Examiner: Chris Wasserman  
 Map Revised: 10/28/2019  
 Map Phase: Post-Review



- Miris Corners
- + Remonumented Section Corners
- ◆ Field Grade Corners
- Counties
- DNR - Secondary Forest Road
- DNR - Forest Access Route
- Federal / State / County - Paved Road
- County - Gravel Road
- Private - Dirt / Gravel Road
- Hiking Trails
- Designated Hiking Trails
- ▲ Berms
- Intermittent Stream
- Lake/Pond
- Lakes and Rivers
- Pipeline
- Compartment Boundary
- Available w/ Constraints
- Unavailable
- 5C: Delay treatment for age/size class diversity or exceptional site quality
- 2A: Adjacent landowner denied access
- 2G: Too wet (sensitive soils, does not include access issues)
- 2H: Blocked by physical obstacle (e.g. upland stand in a lowland area)
- 5E: Long-Term Retention
- Stand Boundaries



84°17'30"W    84°17'00"W    84°16'30"W    84°16'00"W    84°15'30"W    84°15'00"W    84°14'30"W    84°14'00"W    84°13'30"W    84°13'00"W