



Compartment Review Presentation

Gwinn Forest Management Unit

Compartment 32029

Entry Year 2026

Acreage: 1,363

County Marquette

Management Area: Suomi Till and Outwash Plain

Stand Examiner: Sean Fischer

Legal Description:

T45N R24W Section(s) 5, 8, 9, 16, 17, 20, 21

Identified Planning Goals:

To maintain the health and sustainability of the forest while providing for recreational, wildlife and fisheries concerns and needs.

Soil and topography:

The compartment is on the east side of a sand outwash plain transitioning to a moraine topography further east with better soils. Extensive fire history. Primarily level Rubicon, Grayling and Croswell sands with transition to Rousseau-Ocqueoc fine sand and Garlic-Alcona-Voelker complex.

Ownership Patterns, Development, and Land Use in and Around the Compartment:

Private lands with permanent, year-round residences surround and are interspersed within the compartment.

Unique Natural Features:

See MNFI comments.

Archeological, Historical, and Cultural Features:

No Archeological, Historical, or Cultural Features known.

Special Management Designations or Considerations:

Numerous lakes are in the area and within the compartment. Area has an extensive early logging and mining history. Potential for linear-leaved gentian, Hill's thistle, and Canada rice-grass in openings in jack pine. Potential for Wiegand's sedge, black sedge, and marsh grass-of-Parnassus in boggy areas. Potential for submergent and emergent marsh species in small lake and creeks: auricled tway-blade, autumnal water starwort, alternate-leaved water-milfoil, Farwell's water-milfoil, alga pondweed, small yellow water-lily, American shore-grass, linear-leaved gentian and veiny meadow-rue.

Watershed and Fisheries Considerations:

Fisheries Values: Minimal

Fisheries Concerns: The northern tier of this compartment is located in the Chocolay River watershed (ELSMU). No prescribed treatments are near any waterbodies. Standard BMP's should be applied near any wetland areas.

Wildlife Habitat Considerations:

This compartment is found within the Soumi Till and Outwash Management Area, on a Disintegration Moraine in Southwestern Marquette County. The dominant Natural Communities are dry mesic northern forests, poor conifer swamps, and mesic northern forests. This management area offers opportunities to increase diversity and perhaps long-term oak sustainability through under planting white and red pine. Another priority is to maintain or increase wildlife corridors especially along riparian corridors. Wildlife management issues in the management area are mast (hard and soft); habitat fragmentation; mature forest conditions; mesic conifer; coarse woody debris; and retention or development of large living and dead standing trees (for cavities). This management area represents approximately ¼ of the oak resource on WUP state forest.

The following have been identified as featured species for the Soumi Till and Outwash Management Area: Blackburnian Warbler, Golden-winged Warbler, Kirtland's Warbler, Red Crossbill, Black-backed Woodpecker, Ruffed Grouse, American Marten, White-tailed Deer, Black Bear.

Mineral Resource and Development Concerns and/or Restrictions

Sections 5, 8, 9, 16, 17 & 21, T45N-R24W, Marquette County

Surface sediments consist of glacial outwash sand and gravel and postglacial alluvium and an end moraine of coarse-textured till. The glacial drift thickness varies between 10 and 200 feet. The Cambrian Munising Group and Precambrian Archean Granite/Gneiss subcrop below the glacial drift. The Granite/Gneiss has dimension stone characteristics in some

areas. There are no gravel pits in the area, but potential should be good on the uplands. Abandoned iron mines are located four miles to the southwest, but economic iron probably has been removed from this area. This State land has not been previously leased for metallic exploration. There is no economic oil and gas production in the UP.

Vehicle Access:

Good access throughout via primarily sandy two-track roads. Roads are generally hard to block.

Survey Needs:

Section 20

Recreational Facilities and Opportunities:

Little Lake State Forest campground. Boat access sites at Little Lake, Sporley Lake. Snowmobile trail runs through the compartment. Popular area for blueberry picking. Heavily used area by nearby residents for hunting, skiing, hiking and other activities.

Fire Protection:

This area historically has a high fire frequency, due to urban interface and timber types. Much of the area north of Little Lake burned in a large 6,000 acre wildfire in 1986.

Additional Compartment Information:

Area has become a dumping ground for household trash.

The following reports from the Inventory are attached:

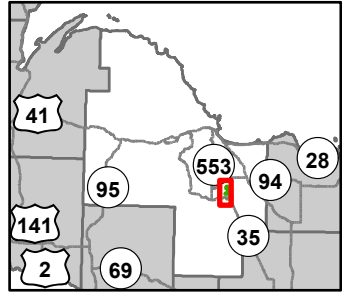
- Total Acres by Cover Type and Age Class**
- Cover Type by Harvest Method**
- Proposed Treatments – No Limiting Factors**
- Proposed Treatments – With Limiting Factors**
- Stand Details (Forested and Nonforested)**
- Dedicated and Proposed Special Conservation Areas**
- Site Condition Details**

The following information is displayed, where pertinent, on the attached compartment maps:

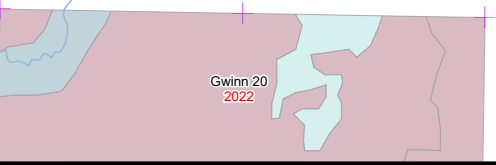
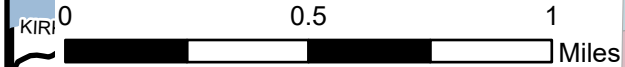
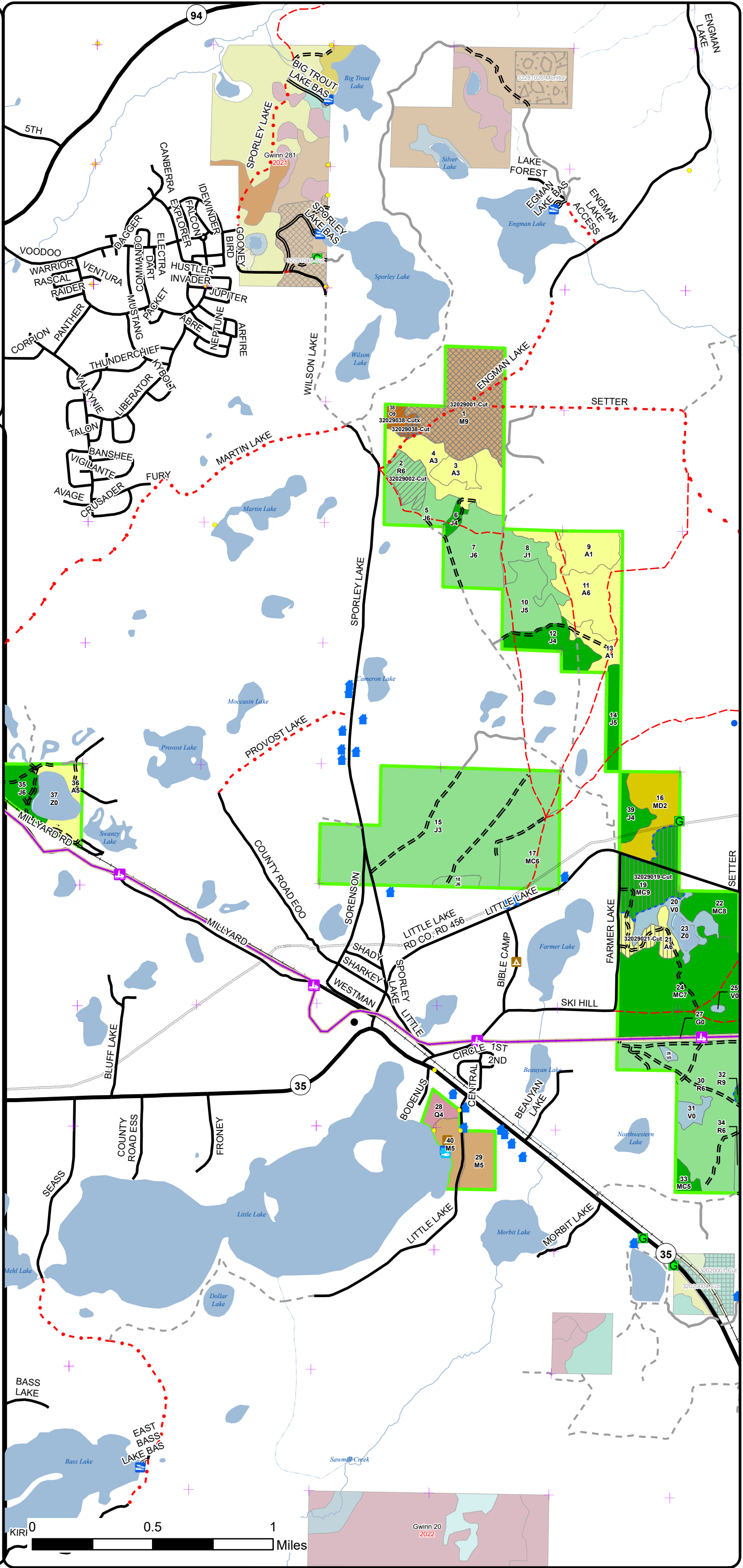
- Base feature information, stand boundaries, cover types, and numbers**
- Proposed treatments**
- Site condition boundaries**
- Details on the road access system**

Overview Map

Compartment: 32029
 T45N, R24W, Sec: 5, 6, 8, 9, 16,
 17, 20, 21
 County: Marquette
 Unit: Gwinn
 Mgmt Area: Suomi Till and
 Outwash Plain
 YOE: 2026
 Acres: 1363 GIS Calculated
 Examiner: Sean Fischer
 Map Revised: 08/14/2024
 Map Phase: Web Post

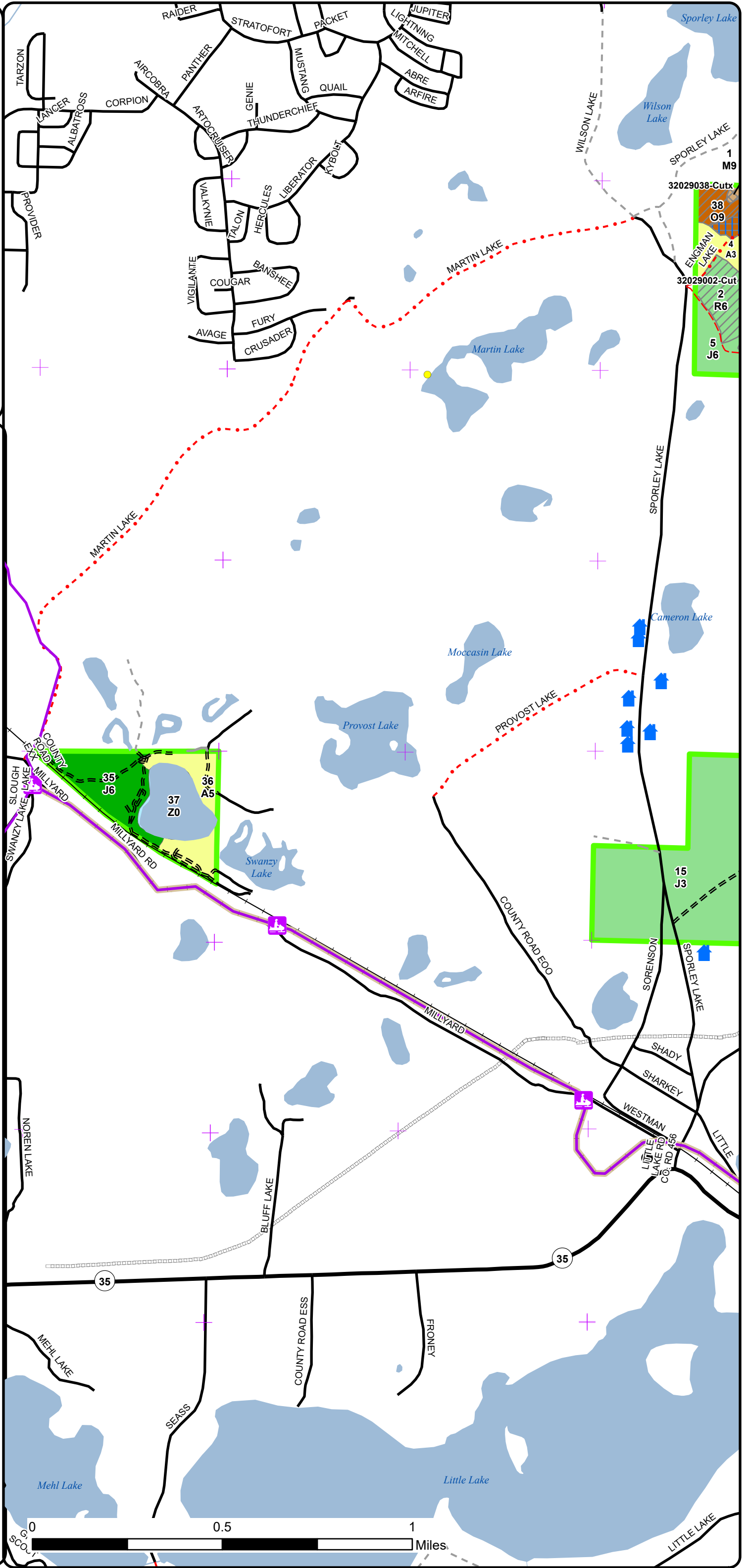
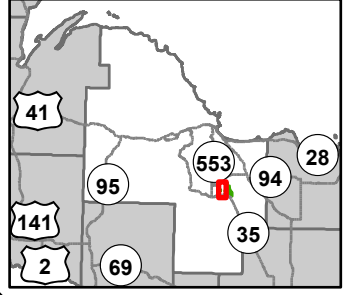


- Gate
- Boating Access Site
- Campground
- City
- Fishing Access Site
- Tower
- House
- Survey Grade Corners
- Remonumented Section Corners
- Snowmobile Trails
- Designated Snowmobile Trails
- Designated RailTrail
- DNR - Primary Forest Road
- DNR - Secondary Forest Road
- DNR - Forest Access Route
- Federal / State Highway
- Federal / State / County - Paved Road
- County - Gravel Road
- County - Dirt Road (Seasonal)
- Private - Paved Road
- Private - Dirt / Gravel Road
- Active Railroads
- Intermittent Stream
- Island in Lake or River
- Lake/Pond
- Perennial River
- Pipeline
- Lakes and Rivers
- Compartment Boundary
- Treatments with Site Conditions
- Selection (Group, Single Tree)
- Clearcut (w/Reserves)
- Seed Tree (w/Reserves)
- Thinning (Crown, Low, Systematic)
- Shelter Wood (w/Reserves)
- 411 - Northern Hardwood
- 412 - Oak Types
- 413 - Aspen Types
- 419 - Mixed Upland Deciduous
- 421 - Planted Pines
- 422 - Natural Pines
- 612 - Lowland Coniferous Forest
- 310 - Herbaceous Openland
- 500 - Water
- 622 - Lowland Shrub

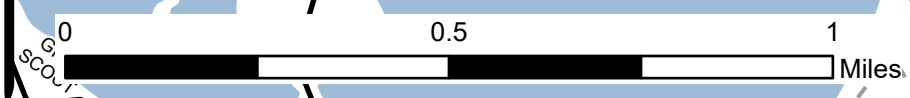


Cover Type & Treatments Map

Compartment: 32029
 T45N, R24W, Sec: 5, 6, 8, 9, 16,
 17, 20, 21
 County: Marquette
 Unit: Gwinn
 Mgmt Area: Suomi Till and
 Outwash Plain
 YOE: 2026
 Acres: 1363 GIS Calculated
 Examiner: Sean Fischer
 Map Revised: 08/14/2024
 Map Phase: Web Post

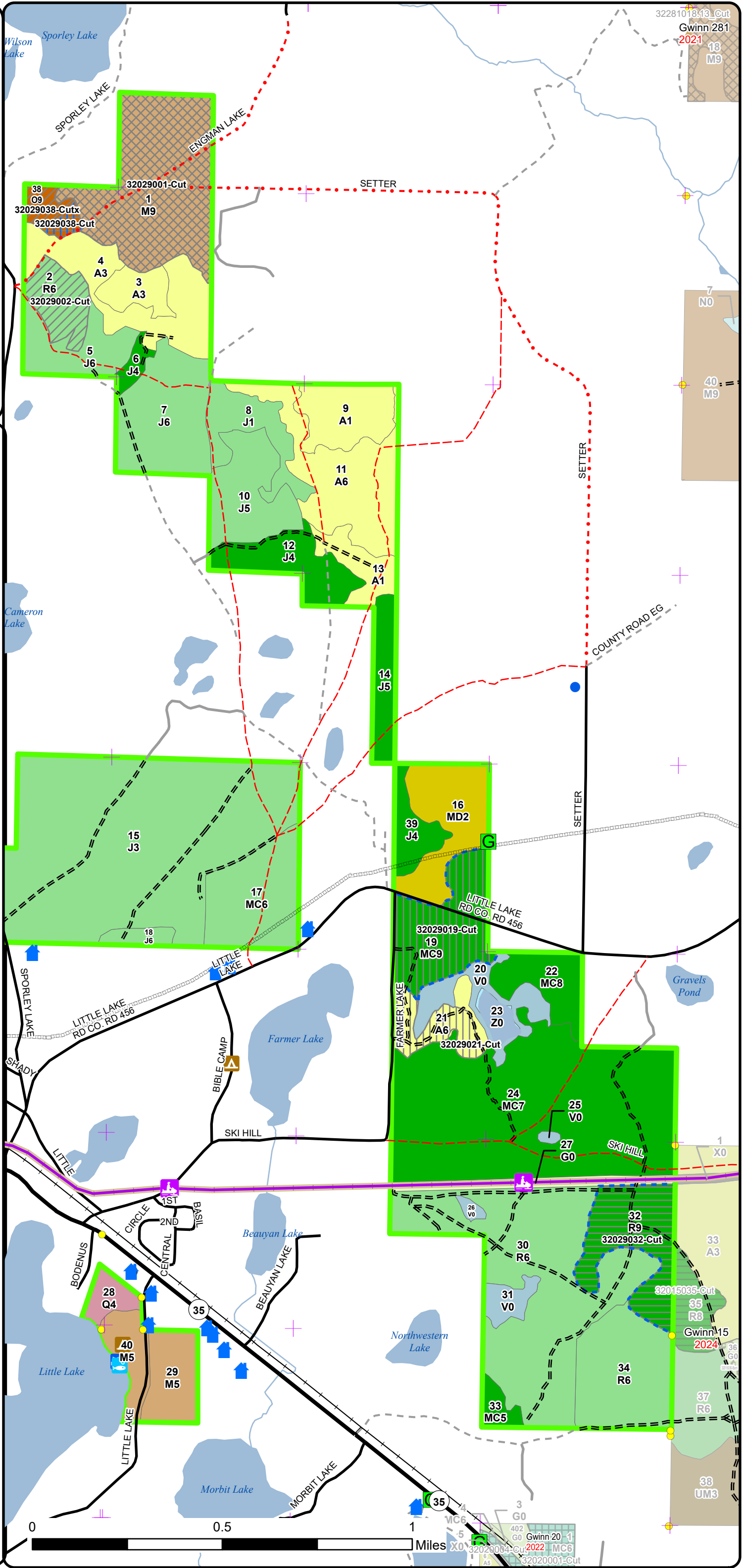
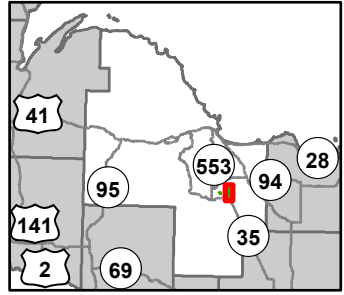


- City
- 🏠 House
- Survey Grade Corners
- ✚ Remonumented Section Corners
- 🛷 Snowmobile Trails
- Designated Snowmobile Trails
- Designated RailTrail
- === DNR - Forest Access Route
- Federal / State Highway
- Federal / State / County - Paved Road
- - - County - Gravel Road
- - - County - Dirt Road (Seasonal)
- Private - Paved Road
- - - Private - Dirt / Gravel Road
- Active Railroads
- Intermittent Stream
- Island in Lake or River
- Lake/Pond
- Perennial River
- Pipeline
- 🌊 Lakes and Rivers
- 🟩 Compartment Boundary
- 🌳 Selection (Group, Single Tree)
- 🌳 Seed Tree (w/Reserves)
- 🌳 Thinning (Crown, Low, Systematic)
- 🟤 411 - Northern Hardwood
- 🟠 412 - Oak Types
- 🟡 413 - Aspen Types
- 🟢 421 - Planted Pines
- 🟢 422 - Natural Pines
- 🟦 500 - Water

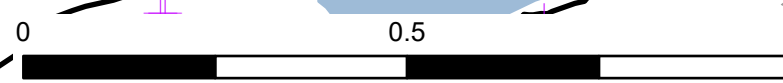


Cover Type & Treatments Map

Compartment: 32029
 T45N, R24W, Sec: 5, 6, 8, 9, 16,
 17, 20, 21
 County: Marquette
 Unit: Gwinn
 Mgmt Area: Suomi Till and
 Outwash Plain
 YOE: 2026
 Acres: 1363 GIS Calculated
 Examiner: Sean Fischer
 Map Revised: 08/14/2024
 Map Phase: Web Post



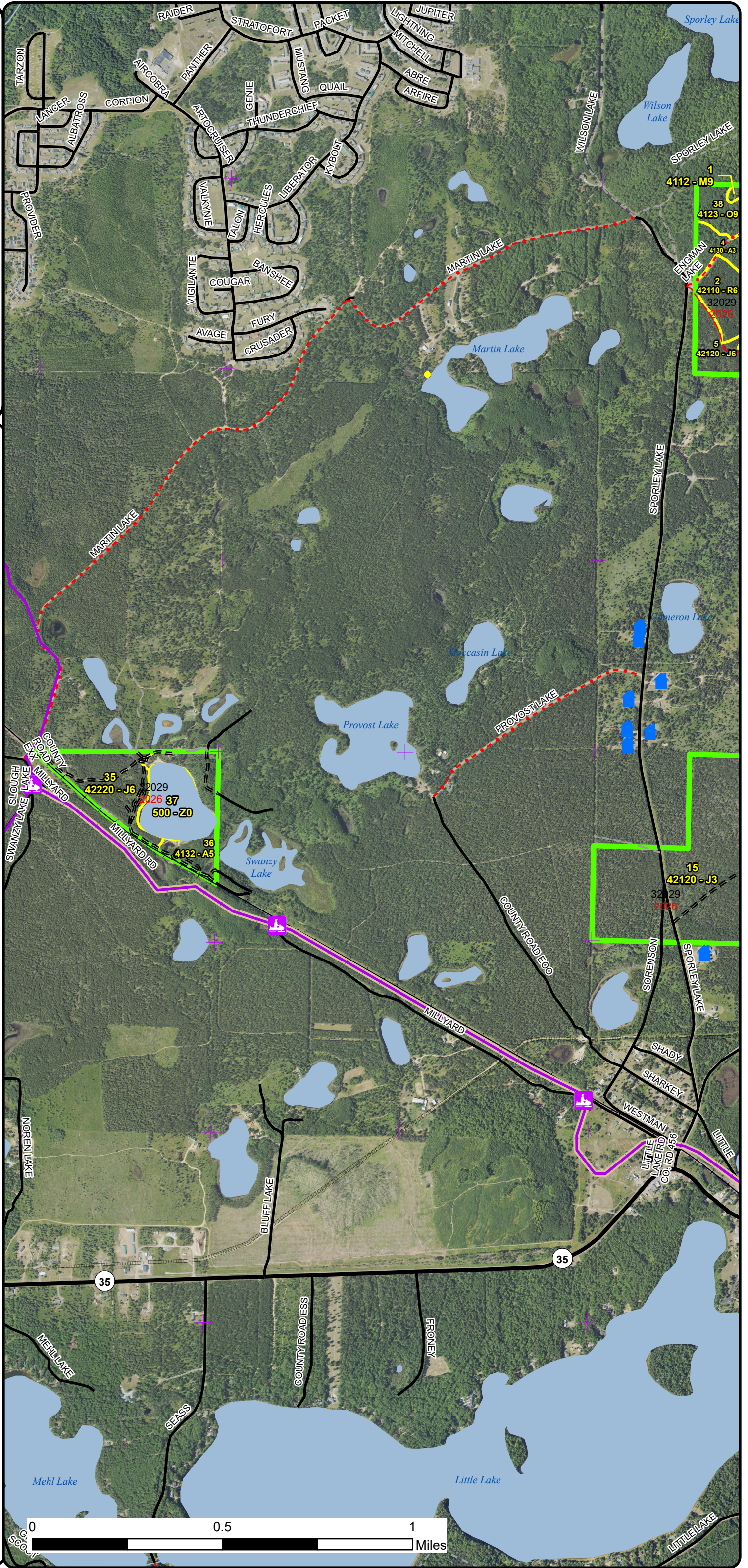
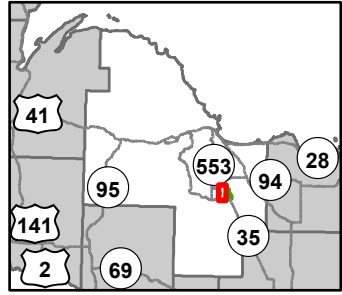
- Berms
- Gate
- Boating Access Site
- Campground
- City
- Fishing Access Site
- Tower
- House
- Survey Grade Corners
- Remonumented Section Corners
- Snowmobile Trails
- Designated Snowmobile Trails
- Designated RailTrail
- DNR - Forest Access Route
- Federal / State Highway
- Federal / State / County - Paved Road
- County - Gravel Road
- County - Dirt Road (Seasonal)
- Private - Paved Road
- Private - Dirt / Gravel Road
- Active Railroads
- Island in Lake or River
- Lake/Pond
- Perennial River
- Pipeline
- Lakes and Rivers
- Compartment Boundary
- Treatments with Site Conditions
- Selection (Group, Single Tree)
- Clearcut (w/Reserves)
- Seed Tree (w/Reserves)
- Thinning (Crown, Low, Systematic)
- Shelter Wood (w/Reserves)
- 411 - Northern Hardwood
- 412 - Oak Types
- 413 - Aspen Types
- 419 - Mixed Upland Deciduous
- 421 - Planted Pines
- 422 - Natural Pines
- 612 - Lowland Coniferous Forest
- 310 - Herbaceous Openland
- 500 - Water
- 622 - Lowland Shrub



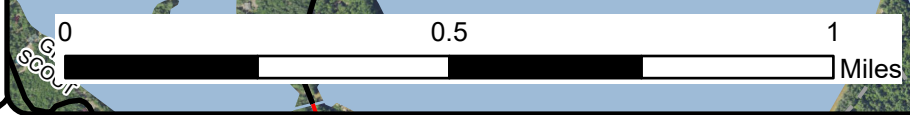
Miles 0 0.5 1
 32029001-Cut
 32029002-Cut
 32029003-Cut
 32029004-Cut
 32029005-Cut
 32029006-Cut
 32029007-Cut
 32029008-Cut
 32029009-Cut
 32029010-Cut
 32029011-Cut
 32029012-Cut
 32029013-Cut
 32029014-Cut
 32029015-Cut
 32029016-Cut
 32029017-Cut
 32029018-Cut
 32029019-Cut
 32029020-Cut
 32029021-Cut
 32029022-Cut
 32029023-Cut
 32029024-Cut
 32029025-Cut
 32029026-Cut
 32029027-Cut
 32029028-Cut
 32029029-Cut
 32029030-Cut
 32029031-Cut
 32029032-Cut
 32029033-Cut
 32029034-Cut
 32029035-Cut
 32029036-Cut
 32029037-Cut
 32029038-Cut
 32029039-Cut
 32029040-Cut
 32029041-Cut
 32029042-Cut
 32029043-Cut
 32029044-Cut
 32029045-Cut
 32029046-Cut
 32029047-Cut
 32029048-Cut
 32029049-Cut
 32029050-Cut
 32029051-Cut
 32029052-Cut
 32029053-Cut
 32029054-Cut
 32029055-Cut
 32029056-Cut
 32029057-Cut
 32029058-Cut
 32029059-Cut
 32029060-Cut
 32029061-Cut
 32029062-Cut
 32029063-Cut
 32029064-Cut
 32029065-Cut
 32029066-Cut
 32029067-Cut
 32029068-Cut
 32029069-Cut
 32029070-Cut
 32029071-Cut
 32029072-Cut
 32029073-Cut
 32029074-Cut
 32029075-Cut
 32029076-Cut
 32029077-Cut
 32029078-Cut
 32029079-Cut
 32029080-Cut
 32029081-Cut
 32029082-Cut
 32029083-Cut
 32029084-Cut
 32029085-Cut
 32029086-Cut
 32029087-Cut
 32029088-Cut
 32029089-Cut
 32029090-Cut
 32029091-Cut
 32029092-Cut
 32029093-Cut
 32029094-Cut
 32029095-Cut
 32029096-Cut
 32029097-Cut
 32029098-Cut
 32029099-Cut
 32029100-Cut
 32029101-Cut
 32029102-Cut
 32029103-Cut
 32029104-Cut
 32029105-Cut
 32029106-Cut
 32029107-Cut
 32029108-Cut
 32029109-Cut
 32029110-Cut
 32029111-Cut
 32029112-Cut
 32029113-Cut
 32029114-Cut
 32029115-Cut
 32029116-Cut
 32029117-Cut
 32029118-Cut
 32029119-Cut
 32029120-Cut
 32029121-Cut
 32029122-Cut
 32029123-Cut
 32029124-Cut
 32029125-Cut
 32029126-Cut
 32029127-Cut
 32029128-Cut
 32029129-Cut
 32029130-Cut
 32029131-Cut
 32029132-Cut
 32029133-Cut
 32029134-Cut
 32029135-Cut
 32029136-Cut
 32029137-Cut
 32029138-Cut
 32029139-Cut
 32029140-Cut
 32029141-Cut
 32029142-Cut
 32029143-Cut
 32029144-Cut
 32029145-Cut
 32029146-Cut
 32029147-Cut
 32029148-Cut
 32029149-Cut
 32029150-Cut
 32029151-Cut
 32029152-Cut
 32029153-Cut
 32029154-Cut
 32029155-Cut
 32029156-Cut
 32029157-Cut
 32029158-Cut
 32029159-Cut
 32029160-Cut
 32029161-Cut
 32029162-Cut
 32029163-Cut
 32029164-Cut
 32029165-Cut
 32029166-Cut
 32029167-Cut
 32029168-Cut
 32029169-Cut
 32029170-Cut
 32029171-Cut
 32029172-Cut
 32029173-Cut
 32029174-Cut
 32029175-Cut
 32029176-Cut
 32029177-Cut
 32029178-Cut
 32029179-Cut
 32029180-Cut
 32029181-Cut
 32029182-Cut
 32029183-Cut
 32029184-Cut
 32029185-Cut
 32029186-Cut
 32029187-Cut
 32029188-Cut
 32029189-Cut
 32029190-Cut
 32029191-Cut
 32029192-Cut
 32029193-Cut
 32029194-Cut
 32029195-Cut
 32029196-Cut
 32029197-Cut
 32029198-Cut
 32029199-Cut
 32029200-Cut
 32029201-Cut
 32029202-Cut
 32029203-Cut
 32029204-Cut
 32029205-Cut
 32029206-Cut
 32029207-Cut
 32029208-Cut
 32029209-Cut
 32029210-Cut
 32029211-Cut
 32029212-Cut
 32029213-Cut
 32029214-Cut
 32029215-Cut
 32029216-Cut
 32029217-Cut
 32029218-Cut
 32029219-Cut
 32029220-Cut
 32029221-Cut
 32029222-Cut
 32029223-Cut
 32029224-Cut
 32029225-Cut
 32029226-Cut
 32029227-Cut
 32029228-Cut
 32029229-Cut
 32029230-Cut
 32029231-Cut
 32029232-Cut
 32029233-Cut
 32029234-Cut
 32029235-Cut
 32029236-Cut
 32029237-Cut
 32029238-Cut
 32029239-Cut
 32029240-Cut
 32029241-Cut
 32029242-Cut
 32029243-Cut
 32029244-Cut
 32029245-Cut
 32029246-Cut
 32029247-Cut
 32029248-Cut
 32029249-Cut
 32029250-Cut
 32029251-Cut
 32029252-Cut
 32029253-Cut
 32029254-Cut
 32029255-Cut
 32029256-Cut
 32029257-Cut
 32029258-Cut
 32029259-Cut
 32029260-Cut
 32029261-Cut
 32029262-Cut
 32029263-Cut
 32029264-Cut
 32029265-Cut
 32029266-Cut
 32029267-Cut
 32029268-Cut
 32029269-Cut
 32029270-Cut
 32029271-Cut
 32029272-Cut
 32029273-Cut
 32029274-Cut
 32029275-Cut
 32029276-Cut
 32029277-Cut
 32029278-Cut
 32029279-Cut
 32029280-Cut
 32029281-Cut
 32029282-Cut
 32029283-Cut
 32029284-Cut
 32029285-Cut
 32029286-Cut
 32029287-Cut
 32029288-Cut
 32029289-Cut
 32029290-Cut
 32029291-Cut
 32029292-Cut
 32029293-Cut
 32029294-Cut
 32029295-Cut
 32029296-Cut
 32029297-Cut
 32029298-Cut
 32029299-Cut
 32029300-Cut
 32029301-Cut
 32029302-Cut
 32029303-Cut
 32029304-Cut
 32029305-Cut
 32029306-Cut
 32029307-Cut
 32029308-Cut
 32029309-Cut
 32029310-Cut
 32029311-Cut
 32029312-Cut
 32029313-Cut
 32029314-Cut
 32029315-Cut
 32029316-Cut
 32029317-Cut
 32029318-Cut
 32029319-Cut
 32029320-Cut
 32029321-Cut
 32029322-Cut
 32029323-Cut
 32029324-Cut
 32029325-Cut
 32029326-Cut
 32029327-Cut
 32029328-Cut
 32029329-Cut
 32029330-Cut
 32029331-Cut
 32029332-Cut
 32029333-Cut
 32029334-Cut
 32029335-Cut
 32029336-Cut
 32029337-Cut
 32029338-Cut
 32029339-Cut
 32029340-Cut
 32029341-Cut
 32029342-Cut
 32029343-Cut
 32029344-Cut
 32029345-Cut
 32029346-Cut
 32029347-Cut
 32029348-Cut
 32029349-Cut
 32029350-Cut
 32029351-Cut
 32029352-Cut
 32029353-Cut
 32029354-Cut
 32029355-Cut
 32029356-Cut
 32029357-Cut
 32029358-Cut
 32029359-Cut
 32029360-Cut
 32029361-Cut
 32029362-Cut
 32029363-Cut
 32029364-Cut
 32029365-Cut
 32029366-Cut
 32029367-Cut
 32029368-Cut
 32029369-Cut
 32029370-Cut
 32029371-Cut
 32029372-Cut
 32029373-Cut
 32029374-Cut
 32029375-Cut
 32029376-Cut
 32029377-Cut
 32029378-Cut
 32029379-Cut
 32029380-Cut
 32029381-Cut
 32029382-Cut
 32029383-Cut
 32029384-Cut
 32029385-Cut
 32029386-Cut
 32029387-Cut
 32029388-Cut
 32029389-Cut
 32029390-Cut
 32029391-Cut
 32029392-Cut
 32029393-Cut
 32029394-Cut
 32029395-Cut
 32029396-Cut
 32029397-Cut
 32029398-Cut
 32029399-Cut
 32029400-Cut
 32029401-Cut
 32029402-Cut
 32029403-Cut
 32029404-Cut
 32029405-Cut
 32029406-Cut
 32029407-Cut
 32029408-Cut
 32029409-Cut
 32029410-Cut
 32029411-Cut
 32029412-Cut
 32029413-Cut
 32029414-Cut
 32029415-Cut
 32029416-Cut
 32029417-Cut
 32029418-Cut
 32029419-Cut
 32029420-Cut
 32029421-Cut
 32029422-Cut
 32029423-Cut
 32029424-Cut
 32029425-Cut
 32029426-Cut
 32029427-Cut
 32029428-Cut
 32029429-Cut
 32029430-Cut
 32029431-Cut
 32029432-Cut
 32029433-Cut
 32029434-Cut
 32029435-Cut
 32029436-Cut
 32029437-Cut
 32029438-Cut
 32029439-Cut
 32029440-Cut
 32029441-Cut
 32029442-Cut
 32029443-Cut
 32029444-Cut
 32029445-Cut
 32029446-Cut
 32029447-Cut
 32029448-Cut
 32029449-Cut
 32029450-Cut
 32029451-Cut
 32029452-Cut
 32029453-Cut
 32029454-Cut
 32029455-Cut
 32029456-Cut
 32029457-Cut
 32029458-Cut
 32029459-Cut
 32029460-Cut
 32029461-Cut
 32029462-Cut
 32029463-Cut
 32029464-Cut
 32029465-Cut
 32029466-Cut
 32029467-Cut
 32029468-Cut
 32029469-Cut
 32029470-Cut
 32029471-Cut
 32029472-Cut
 32029473-Cut
 32029474-Cut
 32029475-Cut
 32029476-Cut
 32029477-Cut
 32029478-Cut
 32029479-Cut
 32029480-Cut
 32029481-Cut
 32029482-Cut
 32029483-Cut
 32029484-Cut
 32029485-Cut
 32029486-Cut
 32029487-Cut
 32029488-Cut
 32029489-Cut
 32029490-Cut
 32029491-Cut
 32029492-Cut
 32029493-Cut
 32029494-Cut
 32029495-Cut
 32029496-Cut
 32029497-Cut
 32029498-Cut
 32029499-Cut
 32029500-Cut
 32029501-Cut
 32029502-Cut
 32029503-Cut
 32029504-Cut
 32029505-Cut
 32029506-Cut
 32029507-Cut
 32029508-Cut
 32029509-Cut
 32029510-Cut
 32029511-Cut
 32029512-Cut
 32029513-Cut
 32029514-Cut
 32029515-Cut
 32029516-Cut
 32029517-Cut
 32029518-Cut
 32029519-Cut
 32029520-Cut
 32029521-Cut
 32029522-Cut
 32029523-Cut
 32029524-Cut
 32029525-Cut
 32029526-Cut
 32029527-Cut
 32029528-Cut
 32029529-Cut
 32029530-Cut
 32029531-Cut
 32029532-Cut
 32029533-Cut
 32029534-Cut
 32029535-Cut
 32029536-Cut
 32029537-Cut
 32029538-Cut
 32029539-Cut
 32029540-Cut
 32029541-Cut
 32029542-Cut
 32029543-Cut
 32029544-Cut
 32029545-Cut
 32029546-Cut
 32029547-Cut
 32029548-Cut
 32029549-Cut
 32029550-Cut
 32029551-Cut
 32029552-Cut
 32029553-Cut
 32029554-Cut
 32029555-Cut
 32029556-Cut
 32029557-Cut
 32029558-Cut
 32029559-Cut
 32029560-Cut
 32029561-Cut
 32029562-Cut
 32029563-Cut
 32029564-Cut
 32029565-Cut
 32029566-Cut
 32029567-Cut
 32029568-Cut
 32029569-Cut
 32029570-Cut
 32029571-Cut
 32029572-Cut
 32029573-Cut
 32029574-Cut
 32029575-Cut
 32029576-Cut
 32029577-Cut
 32029578-Cut
 32029579-Cut
 32029580-Cut
 32029581-Cut
 32029582-Cut
 32029583-Cut
 32029584-Cut
 32029585-Cut
 32029586-Cut
 32029587-Cut
 32029588-Cut
 32029589-Cut
 32029590-Cut
 32029591-Cut
 32029592-Cut
 32029593-Cut
 32029594-Cut
 32029595-Cut
 32029596-Cut
 32029597-Cut
 32029598-Cut
 32029599-Cut
 32029600-Cut
 32029601-Cut
 32029602-Cut
 32029603-Cut
 32029604-Cut
 32029605-Cut
 32029606-Cut
 32029607-Cut
 32029608-Cut
 32029609-Cut
 32029610-Cut
 32029611-Cut
 32029612-Cut
 32029613-Cut
 32029614-Cut
 32029615-Cut
 32029616-Cut
 32029617-Cut
 32029618-Cut
 32029619-Cut
 32029620-Cut
 32029621-Cut
 32029622-Cut
 32029623-Cut
 32029624-Cut
 32029625-Cut
 32029626-Cut
 32029627-Cut
 32029628-Cut
 32029629-Cut
 32029630-Cut
 32029631-Cut
 32029632-Cut
 32029633-Cut
 32029634-Cut
 32029635-Cut
 32029636-Cut
 32029637-Cut
 32029638-Cut
 32029639-Cut
 32029640-Cut
 32029641-Cut
 32029642-Cut
 32029643-Cut
 32029644-Cut
 32029645-Cut
 32029646-Cut
 32029647-Cut
 32029648-Cut
 32029649-Cut
 32029650-Cut
 32029651-Cut
 32029652-Cut
 32029653-Cut
 32029654-Cut
 32029655-Cut
 32029656-Cut
 32029657-Cut
 32029658-Cut
 32029659-Cut
 32029660-Cut
 32029661-Cut
 32029662-Cut
 32029663-Cut
 32029664-Cut
 32029665-Cut
 32029666-Cut
 32029667-Cut
 32029668-Cut
 32029669-Cut
 32029670-Cut
 32029671-Cut
 32029672-Cut
 32029673-Cut
 32029674-Cut
 32029675-Cut
 32029676-Cut
 32029677-Cut
 32029678-Cut
 32029679-Cut
 32029680-Cut
 32029681-Cut
 32029682-Cut
 32029683-Cut
 32029684-Cut
 32029685-Cut
 32029686-Cut
 32029687-Cut
 32029688-Cut
 32029689-Cut
 32029690-Cut
 32029691-Cut
 32029692-Cut
 32029693-Cut
 32029694-Cut
 32029695-Cut
 32029696-Cut
 32029697-Cut
 32029698-Cut
 32029699-Cut
 32029700-Cut
 32029701-Cut
 32029702-Cut
 32029703-Cut
 32029704-Cut
 32029705-Cut
 32029706-Cut
 32029707-Cut
 32029708-Cut
 32029709-Cut
 32029710-Cut
 32029711-Cut
 32029712-Cut
 32029713-Cut
 32029714-Cut
 32029715-Cut
 32029716-Cut
 32029717-Cut

Stand Boundary Map

Compartment: 32029
 T45N, R24W, Sec: 5, 6, 8, 9, 16,
 17, 20, 21
 County: Marquette
 Unit: Gwinn
 Mgmt Area: Suomi Till and
 Outwash Plain
 YOE: 2026
 Acres: 1363 GIS Calculated
 Examiner: Sean Fischer
 Map Revised: 08/14/2024
 Map Phase: Web Post

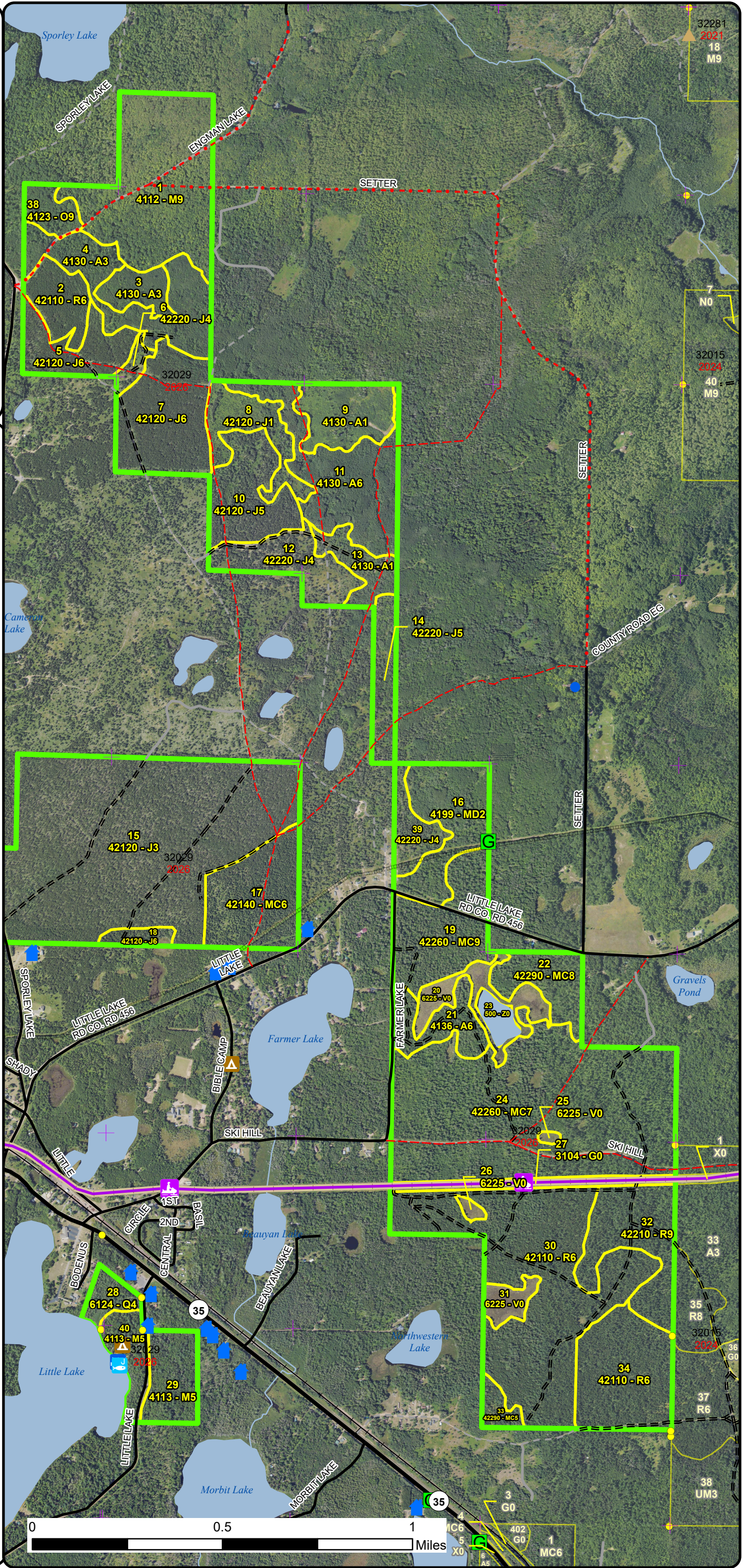
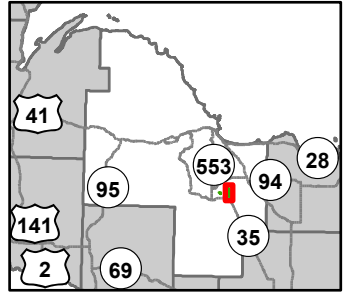


- City
- 🏠 House
- Survey Grade Corners
- ✚ Remonumented Section Corners
- 🛷 Snowmobile Trails
- Designated Snowmobile Trails
- Designated RailTrail
- === DNR - Forest Access Route
- Federal / State Highway
- Federal / State / County - Paved Road
- - - County - Gravel Road
- - - County - Dirt Road (Seasonal)
- Private - Paved Road
- - - Private - Dirt / Gravel Road
- Active Railroads
- Intermittent Stream
- Island in Lake or River
- Lake/Pond
- Perennial River
- Pipeline
- Lakes and Rivers
- Compartment Boundary
- Stand Boundaries
- 411 - Northern Hardwood
- 412 - Oak Types
- 413 - Aspen Types
- 421 - Planted Pines
- 422 - Natural Pines
- 500 - Water
- State Forests

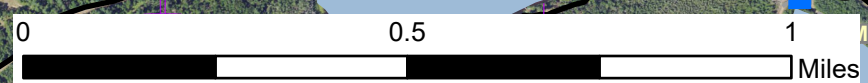


Stand Boundary Map

Compartment: 32029
 T45N, R24W, Sec: 5, 6, 8, 9, 16,
 17, 20, 21
 County: Marquette
 Unit: Gwinn
 Mgmt Area: Suomi Till and
 Outwash Plain
 YOE: 2026
 Acres: 1363 GIS Calculated
 Examiner: Sean Fischer
 Map Revised: 08/14/2024
 Map Phase: Web Post

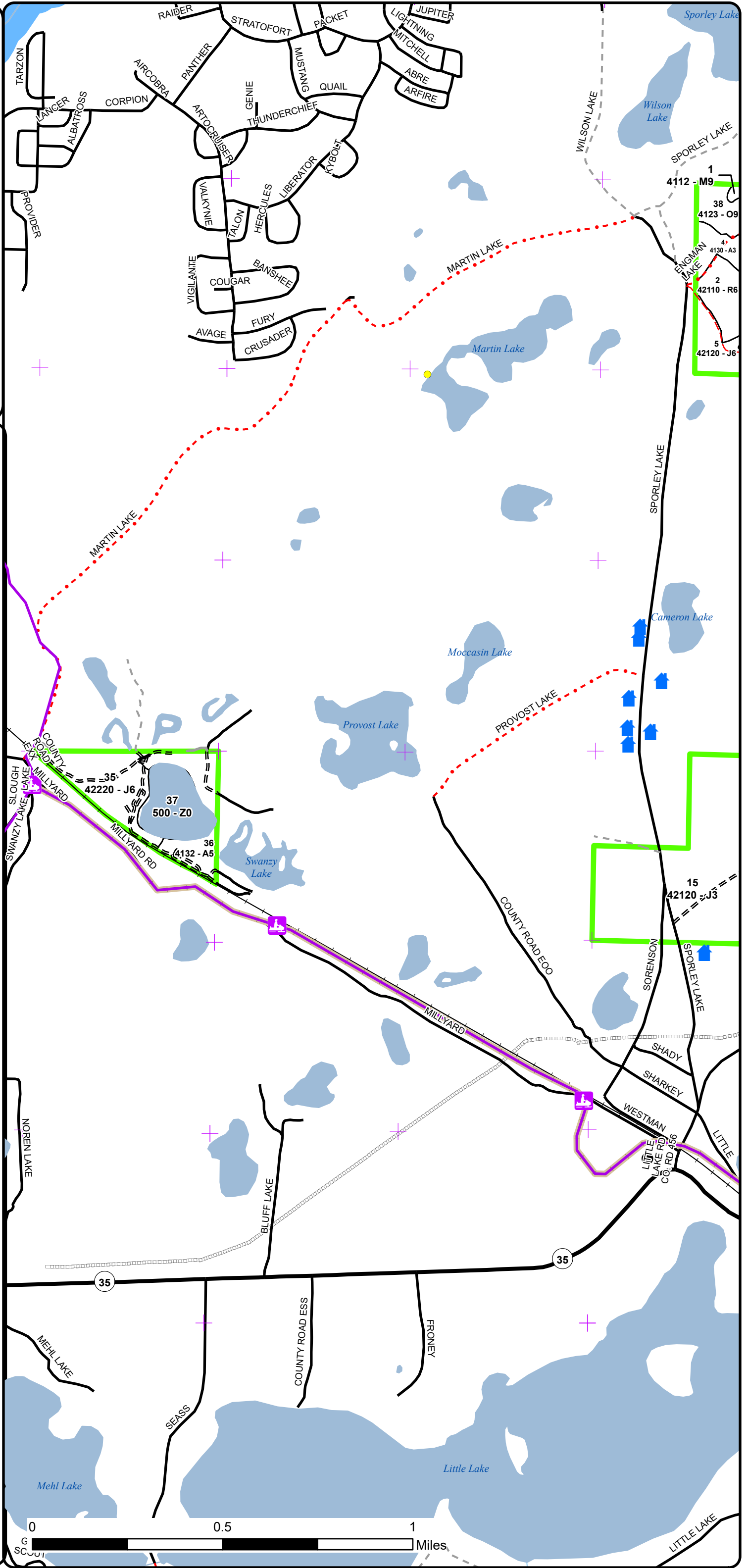
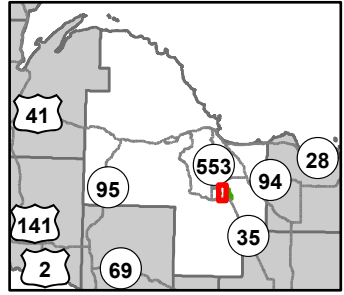


- Berms
- Gate
- Boating Access Site
- Campground
- City
- Fishing Access Site
- Tower
- House
- Survey Grade Corners
- Remonumented Section Corners
- Snowmobile Trails
- Designated Snowmobile Trails
- Designated RailTrail
- DNR - Forest Access Route
- Federal / State Highway
- Federal / State / County - Paved Road
- County - Gravel Road
- County - Dirt Road (Seasonal)
- Private - Paved Road
- Private - Dirt / Gravel Road
- Active Railroads
- Island in Lake or River
- Lake/Pond
- Perennial River
- Pipeline
- Lakes and Rivers
- Compartment Boundary
- Stand Boundaries
- 411 - Northern Hardwood
- 412 - Oak Types
- 413 - Aspen Types
- 419 - Mixed Upland Deciduous
- 421 - Planted Pines
- 422 - Natural Pines
- 612 - Lowland Coniferous Forest
- 310 - Herbaceous Openland
- 500 - Water
- 622 - Lowland Shrub
- State Forests

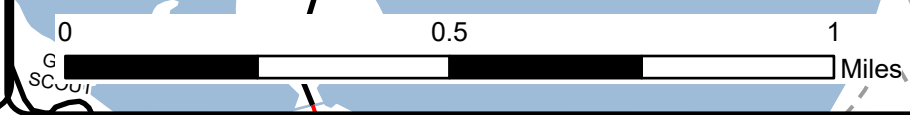


Special Conservation Areas & Site Conditions Map

Compartment: 32029
 T45N, R24W, Sec: 5, 6, 8, 9, 16,
 17, 20, 21
 County: Marquette
 Unit: Gwinn
 Mgmt Area: Suomi Till and
 Outwash Plain
 YOE: 2026
 Acres: 1363 GIS Calculated
 Examiner: Sean Fischer
 Map Revised: 08/14/2024
 Map Phase: Web Post

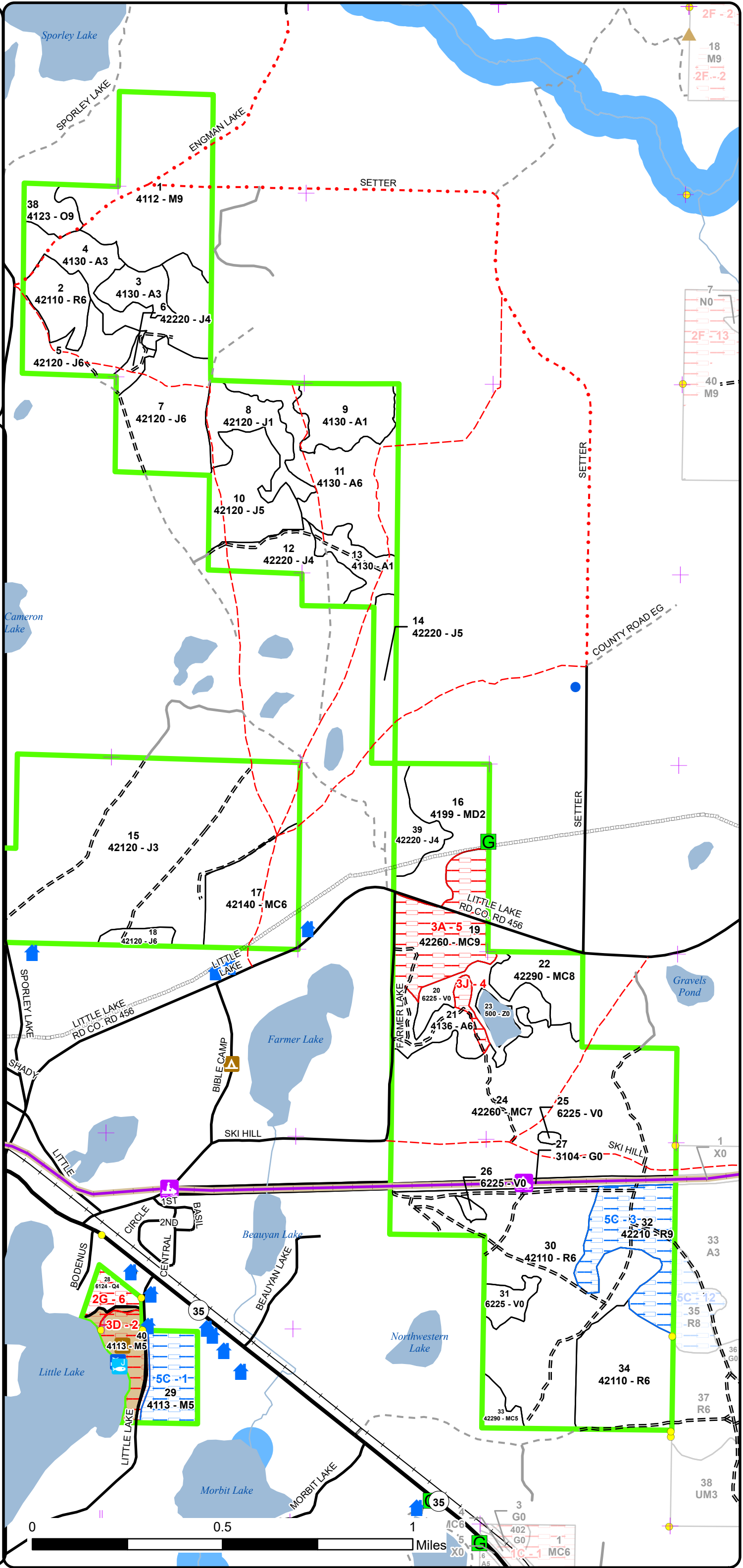
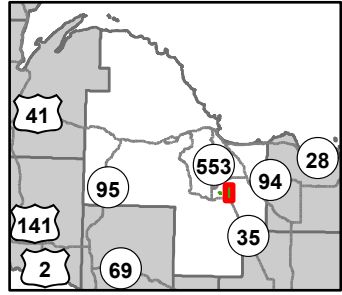


- City
- 🏠 House
- Survey Grade Corners
- ✚ Remonumented Section Corners
- 🛷 Snowmobile Trails
- Designated Snowmobile Trails
- Designated RailTrail
- == DNR - Forest Access Route
- Federal / State Highway
- Federal / State / County - Paved Road
- - - County - Gravel Road
- - - County - Dirt Road (Seasonal)
- Private - Paved Road
- - - Private - Dirt / Gravel Road
- Active Railroads
- - - Intermittent Stream
- Island in Lake or River
- Lake/Pond
- Perennial River
- Pipeline
- Lakes and Rivers
- Compartment Boundary
- Stand Boundaries
- Cold Water Streams
- Cold Water Lakes
- High Priority Trout Stream Buffer

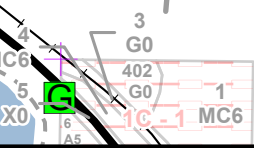
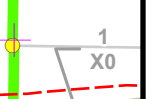
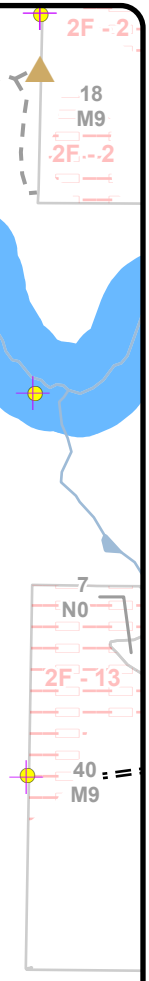
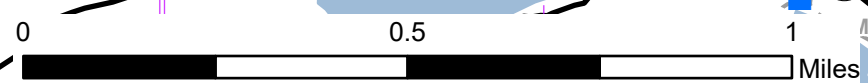


Special Conservation Areas & Site Conditions Map

Compartment: 32029
 T45N, R24W, Sec: 5, 6, 8, 9, 16,
 17, 20, 21
 County: Marquette
 Unit: Gwinn
 Mgmt Area: Suomi Till and
 Outwash Plain
 YOE: 2026
 Acres: 1363 GIS Calculated
 Examiner: Sean Fischer
 Map Revised: 08/14/2024
 Map Phase: Web Post



- Berms
- Gate
- Boating Access Site
- Campground
- City
- Fishing Access Site
- Tower
- House
- Survey Grade Corners
- Remonumented Section Corners
- Snowmobile Trails
- Designated Snowmobile Trails
- Designated Rail Trail
- DNR - Forest Access Route
- Federal / State Highway
- Federal / State / County - Paved Road
- County - Gravel Road
- County - Dirt Road (Seasonal)
- Private - Paved Road
- Private - Dirt / Gravel Road
- Active Railroads
- Island in Lake or River
- Lake/Pond
- Perennial River
- Pipeline
- Lakes and Rivers
- Compartment Boundary
- SCA
- Available w/ Constraints
- Unavailable
- 5C: Delay treatment for age/size class diversity or exceptional
- 2G: Too wet (sensitive soils, does not include access issues)
- 3A: Conservation Values incompatible with harvest at this time
- 3D: Recreational / Scenic values
- 3J: Water quality / BMPs (stream, river, or lake)
- Stand Boundaries
- Cold Water Streams
- Cold Water Lakes
- High Priority Trout Stream Buffer
- State Forest Campground
- Trail - Trail Corridor



Report 1 – Total Acres by Cover Type and Age Class



Age Class

	Non-Forest	0-9	10-19	20-29	30-39	40-49	50-59	60-69	70-79	80-89	90-99	100-109	110-119	120-129	130-139	140-149	150+	Uneven-Aged	Total
Aspen	0	25	12	42	18	65	19	0	0	0	0	0	0	0	0	0	0	0	181
Bog	29	0	0	0	0	0	0	0	0	0	0	0	0	0	0	0	0	0	29
Herbaceous Openland	12	0	0	0	0	0	0	0	0	0	0	0	0	0	0	0	0	0	12
Jack Pine	0	0	0	0	422	22	0	0	0	0	0	0	0	0	0	0	0	0	444
Lowland Conifers	0	0	0	0	0	0	0	0	0	9	0	0	0	0	0	0	0	0	9
Mixed Upland Deciduous	0	0	0	0	36	0	0	0	0	0	0	0	0	0	0	0	0	0	36
Natural Mixed Pines	0	0	0	0	0	0	0	6	0	0	63	0	0	0	0	0	0	169	238
Northern Hardwood	0	0	0	0	0	0	0	0	0	0	36	82	0	0	0	0	0	0	118
Oak	0	0	0	0	0	0	0	0	0	0	0	10	0	0	0	0	0	0	10
Planted Mixed Pines	0	0	0	0	0	40	0	0	0	0	0	0	0	0	0	0	0	0	40
Red Pine	0	0	0	121	64	0	0	0	0	0	38	0	0	0	0	0	0	0	223
Water	23	0	0	0	0	0	0	0	0	0	0	0	0	0	0	0	0	0	23
Total	64	25	12	163	540	127	19	6	0	9	137	92	0	0	0	0	0	169	1363



Report 2 – Treatment Summary

Gwinn Mgt. Unit

Year of Entry: 2026

Acres of Harvest

Compartment 29

Total Compartment Acres: 1,363

Commercial Harvest - 125
 Harvests with Site Condition - 80
 Next Step Harvest - 0
 Habitat Cut - 0

Cover Type by Harvest Method

	Clearcut	Selection	Patch Clearcut	Seed Tree	Shelterwood	Thinning	Overstory Removal	Salvage	Other	Total Acres
Aspen	0	0	0	0	15	0	0	0	0	15
Natural Mixed Pines	0	0	0	0	42	0	0	0	0	42
Northern Hardwood	0	83	0	0	0	0	0	0	0	83
Oak	0	0	0	4	0	6	0	0	0	10
Red Pine	38	0	0	0	0	17	0	0	0	56
Total	38	83	0	4	57	24	0	0	0	205

Proposed and Next Step Treatments by Method

	Harvest	Site Prep	Planting	Seeding	Burning	Pesticide	Monitoring	Other	Non-Forest Mgt.	Total Acres
Current	205	0	0	0	0	0	0	0	0	205
Next Step	0	76	76	0	0	76	258	0	0	487
Total	205	76	76	0	0	76	258	0	0	692



S t a n d	Treatment Name	Acres	Stand CoverType	Size Density	Stand Age	BA Range	Treatment Type	Treatment Method	Cover Type Objective	Age Structure	Habitat Cut
-----------------------	----------------	-------	-----------------	--------------	-----------	----------	----------------	------------------	----------------------	---------------	-------------

Proposed Treatments:

1	32029001-Cut	82.5	4112 - Maple, Beech, Cherry Association	Sawtimber Well	105	81-110	Harvest	Single Tree Selection	411 - Northern Hardwood	Uneven-Aged	No
<p><u>Prescription</u> Mark to 70-80 BA. Favor retention of quality pole and small log trees, especially those between 8 and 14 inches in diameter. Mark for spacing using the complete marker.</p> <p><u>Specs:</u> Mark approximately 2 canopy gaps per acre approximately 50ft in diameter, marking all merchantable and unmerchantable stems 2"+ in diameter within the gap. Retain all hemlock, white pine, yellow birch. Mark to favor retention of healthy black cherry or to encourage cherry reproduction where possible.</p> <p><u>Next Step</u> Monitoring, Natural Regen (Re-Inventory)</p> <p><u>Treatments:</u></p> <p><u>Acceptable Regen:</u> Sugar maple, red maple, red oak, aspen, white spruce, white pine, hemlock, black cherry, paper birch, yellow birch, basswood, and other typical northern hardwood species.</p> <p><u>Other Comment:</u></p> <p><u>Site Condition</u></p> <p><u>Proposed Start Date:</u> 10/1 /2025</p>											
2	32029002-Cut	17.4	42110 - Planted Red Pine	Poletimber Well	38	141-170	Harvest	Systematic Thinning	4211 - Planted Red Pine	Even-Aged	No
<p><u>Prescription</u> Mark every third planted row of red pine in orange paint. Mark jack pine, aspen, and red pine outside of every third row as needed for equipment operability.</p> <p><u>Next Step</u> n/a</p> <p><u>Treatments:</u></p> <p><u>Acceptable Regen:</u> n/a</p> <p><u>Other Comment:</u></p> <p><u>Site Condition</u></p> <p><u>Proposed Start Date:</u> 10/1 /2025</p>											
19	32029019-Cut	41.7	42260 - Natural Pine, Mixed Deciduous	Sawtimber Well	94	81-110	Harvest	Shelterwood with Retention	4319 - Mixed Upland Forest	Two-Aged	No
<p><u>Prescription</u> Retain 40-60 BA of pine and oak as shelterwood overstory. Cut all red pine and white pine under 18" dbh, except for trees marked in green paint. Cut all other merchantable species 4" dbh and greater regardless of merchantability, except reserve all oak. Green tree largest diameter pine available to obtain desired BA in areas where BA is not met with reserve oak and 18+" pine.</p> <p><u>Next Step</u> Monitoring, Natural Regen (Re-Inventory)</p> <p><u>Treatments:</u></p> <p><u>Acceptable Regen:</u> Oak, aspen, red maple, sugar maple, red pine, white pine, jack pine, black spruce, white spruce, and paper birch.</p> <p><u>Other Comment:</u></p> <p><u>Site Condition</u> Conservation Values</p> <p><u>Proposed Start Date:</u> 10/1 /2025</p>											



S
t
a
n
d

Treatment Name	Acres	Stand CoverType	Size Density	Stand Age	BA Range	Treatment Type	Treatment Method	Cover Type Objective	Age Structure	Habitat Cut
----------------	-------	-----------------	--------------	-----------	----------	----------------	------------------	----------------------	---------------	-------------

21	32029021-Cut	15.4	4136 - Aspen, Mixed Conifer	Poletimber Well	52	81-110	Harvest	Shelterwood	4319 - Mixed Upland Forest	Two-Aged	No
----	--------------	------	-----------------------------	-----------------	----	--------	---------	-------------	----------------------------	----------	----

Prescription Cut all species 2" dbh and greater, except do not cut oak, red pine, white pine, or spruce. Residual BA should be between 30-50 on average, but will vary throughout the stand. Green tree any suitable, wildlife-quality bigtooth aspen for reserve trees as raptor and woodpecker habitat. Large diameter, forked aspen should be chosen.

Next Step Monitoring, Natural Regen (Re-Inventory)

Treatments:

Acceptable Regen: Oak, aspen, red pine, white pine, paper birch, red maple, sugar maple, white spruce, black spruce, jack pine, and yellow birch.

Other Comment:

Site Condition

Proposed Start Date: 10/1 /2025

38	32029038-Cut	3.5	4123 - Red Oak	Sawtimber Well	105	111-140	Harvest	Seed Tree with Retention	412 - Oak Types	Two-Aged	No
----	--------------	-----	----------------	----------------	-----	---------	---------	--------------------------	-----------------	----------	----

Prescription Mark to leave 20-30 BA of largest diameter red oak. Cut all other trees down to 1 inch in dbh. Leave all black cherry, hemlock, white pine.

Next Step Monitoring, Natural Regen (Re-Inventory)

Treatments:

Acceptable Regen: Northern red oak, aspen, white pine.

Other Comment:

Site Condition

Proposed Start Date: 10/1 /2025

38	32029038-Cutx	6.3	4123 - Red Oak	Sawtimber Well	105	111-140	Harvest	Crown Thinning	412 - Oak Types	Even-Aged	No
----	---------------	-----	----------------	----------------	-----	---------	---------	----------------	-----------------	-----------	----

Prescription Thin stand from above to 80-100 BA to promote crop trees. Cut all fir and aspen. Retain legacy oak (>26"), and other large diameter oak where possible. Retain all hemlock, white pine, yellow birch, and black cherry.

Next Step
Treatments:

Acceptable Regen:

Other Comment:

Site Condition

Proposed Start Date: 10/1 /2025

Approved Treatments:

32	32029032-Cut	38.2	42210 - Natural Red Pine	Sawtimber Well	92	81-110	Harvest	Clearcut with Retention	4211 - Planted Red Pine	Even-Aged	No
----	--------------	------	--------------------------	----------------	----	--------	---------	-------------------------	-------------------------	-----------	----

Prescription Harvest to a 2" spec to prepare site for planting red pine. Leave edge long-term retention for stand.

Next Step Pesticide, Aerial - Site Prep; SitePrep, Trenching; Planting, Initial Plant; Monitoring, Artificial Regen(1yr); Monitoring, Artificial Regen(3yr); SitePrep, Roller Chopping; Planting, Replant; Pesticide, Aerial - Release; Monitoring, Herbi

Acceptable Regen: red pine

Other Comment:

Site Condition Age-Class or Site Quality



S
t
a
n
d

Treatment Name	Acres	Stand CoverType	Size Density	Stand Age	BA Range	Treatment Type	Treatment Method	Cover Type Objective	Age Structure	Habitat Cut
----------------	-------	-----------------	--------------	-----------	----------	----------------	------------------	----------------------	---------------	-------------

Proposed Start Date: 10/1 /2023

Total Treatment Acreage Proposed: 205

Report 4 – Site Conditions

Gwinn Mgt. Unit
Sean Fischer : Examiner

Compartment: 29
Year of Entry: 2026

Availability for Management

Total Acres	Acres Available	Acres Avail		Acres Not Available		Dominant Site Conditions				
		With Condition				5C	2G	3A	3D	3J
180	177	0		4	Aspen					4
29	29	0		0	Bog					
12	12	0		0	Herbaceous Openland					
444	444	0		0	Jack Pine					
9	0	0		8	Lowland Conifers		8			
36	36	0		0	Mixed Upland Deciduous					
238	196	0		42	Natural Mixed Pines			42		
118	82	21		15	Northern Hardwood	21	0		15	
10	10	0		0	Oak					
40	40	0		0	Planted Mixed Pines					
224	186	38		0	Red Pine	38				
23	23	0		0	Water					
1,363	1,235	59		69	Total Forested Acres	59	9	42	15	4
	91%	4%		5%	Relative Percent					

**Due to limitations in the current Site Conditions Analysis tool, all nonforested acres are considered available. Future development will enable analysis of nonforested types.*

Site No.	Dominant Site Cond Availability	Dominant Site Condition	Acres	Other Site Condition	Other Site Condition	Other Site Condition	Other Site Condition
1	Available	5C: Delay treatment for age/size class diversity or exceptional site quality	21	Unspecified	Unspecified	Unspecified	Unspecified
Comments: Wait to harvest with a nearby stand when a greater number of desirable treatments are available in the area. Potentially exclude wet ground white pine area in center of stand when stand is treated.							
2	Unavailable	3D: Recreational / Scenic values	15	Unspecified	Unspecified	Unspecified	Unspecified
Comments:							

Report 4 – Site Conditions

Gwinn Mgt. Unit
Sean Fischer : Examiner

Compartment: 29
Year of Entry: 2026

3	Available	5C: Delay treatment for age/size class diversity or exceptional site quality	38	Unspecified	Unspecified	Unspecified	Unspecified
Comments: 9/2023: Treatment on hold pending final guidance on natural pine.							
4	Unavailable	3J: Water quality / BMPs (stream, river, or lake)	4	Unspecified	Unspecified	Unspecified	Unspecified
Comments: Buffer along road in eastern part of unit to stay 100ft from open water.							
5	Unavailable	3A: Conservation Values incompatible with harvest at this time	42	Unspecified	Unspecified	Unspecified	Unspecified
Comments:							
6	Unavailable	2G: Too wet (sensitive soils, does not include access issues)	9	3J: Water quality / BMPs (stream, river, or lake)	Unspecified	Unspecified	Unspecified
Comments: Treatment undesirable because stand portion west of Little Lake Road is the Little Lake State Forest Campground							

Mgt. Unit

Compartment: #Type!

Year of Entry:



Report 5 – PROPOSED SPECIAL CONSERVATION AREA* (SCA) DETAILS

* This is a partial list of SCAs for this compartment. Not included are those areas identified under other Department initiatives (Natural Rivers, Deer Wintering Areas, etc.). Those will be identified in separate, future map and report products.

SCA Name	SCA Category	Detail Type	Recommendation	Acres
----------	--------------	-------------	----------------	-------

Comments



Report 6 – EXISTING SPECIAL CONSERVATION AREA DETAILS

* This is a list of SCA's for this compartment along with a 1/4 mile buffer surrounding the compartment. Refer to the Special Conservation Area Map for locations of the below listed Conservation Areas.

ERA = Ecological Reference Area
HCVA = High Conservation Value Area
SCA = Special Conservation Area

Conservation Area	Type	Description
SCA	Cold Water Lake	A coldwater lake has temperature and dissolved oxygen conditions that allow naturally-reproduced or stocked trout populations and those of other coldwater fish species to persist from year to year. Suitable conditions for coldwater fishes may occur in Michigan lakes if they are relatively deep, have substantial groundwater inflows, or are located in colder (northern) areas of the state. Such lakes are established by Director's action and designated as trout resources by Fisheries Order 200.
SCA	Cold Water Stream	A coldwater stream has temperature and dissolved oxygen conditions that allow naturally-reproduced or stocked trout populations and those of other coldwater fish species (e.g., slimy sculpin) to persist from year to year. Coldwater streams in Michigan typically provide these conditions due to substantial contributions of groundwater to their stream flows. Such streams are established by Director's action and designated as trout resources by Fisheries Order 210.
SCA	Riparian Area	A transitional area between aquatic and terrestrial ecosystems in which the terrestrial ecosystem influences the aquatic ecosystem and vice-versa. Because of the unique conditions adjacent to lakes, streams and open water wetlands, riparian areas harbor a high diversity of plants and wildlife. Riparian communities are ecologically and socially significant in their effects on water quality and quantity, as well as aesthetics, habitat, bank stability, timber production, and their contribution to overall biodiversity.



Stand	Level 4 Cover Type	Size Density	Acres	Stand Age	BA Range	Managed Site	General Comments																																																																																																				
1	4112 - Maple, Beech, Cherry Association	Sawtimber Well	82.4	105	81-110	N/A	Select cut as "Sporley Lake Block" #20-78A - summer, 1979 and "Engman Lake Hardwood" #010-96 (unit 1-6) - fall, 1996 - summer, 1997, summer 1998. Some hardwood TSI also completed under FTP C32-12 - October, 1979 in conjunction with t. sale contract. Rolling terrain. Variable stand. Some small areas heavier to oak logs with oak seedlings noted transitioning into more maple with oak component and cherry poles, south edge of stand. The poletimber established by past treatments is mostly overtopped and low quality. Northern part of stand is heavier to sugar maple and red maple. Black knot on cherry. Heavier fir understory in areas with higher maple canopy. Canopy closed, stand is ready for a harvest.																																																																																																				
<table border="1"> <thead> <tr> <th>Canopy Species</th> <th>% Cover</th> <th>Size Class</th> <th>DBH</th> <th>Age</th> </tr> </thead> <tbody> <tr><td>White Pine</td><td>1</td><td>XLog</td><td>28</td><td></td></tr> <tr><td>Paper Birch</td><td>1</td><td>Pole/Sapling</td><td>5</td><td></td></tr> <tr><td>Quaking Aspen</td><td>2</td><td>Pole/Sapling</td><td>5</td><td></td></tr> <tr><td>Yellow Birch</td><td>2</td><td>Pole/Sapling</td><td>7</td><td></td></tr> <tr><td>Red Oak</td><td>10</td><td>XLog/Log</td><td>22</td><td>105</td></tr> <tr><td>Balsam Fir</td><td>2</td><td>Pole</td><td>6</td><td></td></tr> <tr><td>Sugar Maple</td><td>56</td><td>Log/Pole/XLog</td><td>11</td><td>105</td></tr> <tr><td>Hemlock</td><td>1</td><td>Log/XLog</td><td>14</td><td></td></tr> <tr><td>Red Maple</td><td>20</td><td>Log/Pole/XLog</td><td>11</td><td></td></tr> <tr><td>Black Cherry</td><td>5</td><td>Log/Pole</td><td>10</td><td></td></tr> </tbody> </table>		Canopy Species	% Cover	Size Class	DBH	Age		White Pine	1	XLog	28		Paper Birch	1	Pole/Sapling	5		Quaking Aspen	2	Pole/Sapling	5		Yellow Birch	2	Pole/Sapling	7		Red Oak	10	XLog/Log	22	105	Balsam Fir	2	Pole	6		Sugar Maple	56	Log/Pole/XLog	11	105	Hemlock	1	Log/XLog	14		Red Maple	20	Log/Pole/XLog	11		Black Cherry	5	Log/Pole	10		<table border="1"> <thead> <tr> <th>Sub-Canopy Species</th> <th>Density</th> <th>Avg. Height</th> <th>Size</th> </tr> </thead> <tbody> <tr><td>Balsam Fir</td><td>Low</td><td>Variable</td><td>Sapling</td></tr> <tr><td>White Pine</td><td>Low</td><td>5 - 10 feet</td><td>Sapling</td></tr> <tr><td>Black Cherry</td><td>Low</td><td>10 - 20 feet</td><td>Sapling</td></tr> <tr><td>Hemlock</td><td>Low</td><td>Variable</td><td>Sapling</td></tr> <tr><td>Red Oak</td><td>Medium</td><td>Variable</td><td>Sapling</td></tr> <tr><td>Red Maple</td><td>Medium</td><td>Variable</td><td>Sapling</td></tr> <tr><td>Sugar Maple</td><td>Medium</td><td>Variable</td><td>Sapling</td></tr> <tr><td>Yellow Birch</td><td>Low</td><td>>20 feet</td><td>Sapling</td></tr> <tr><td>Red Maple</td><td>Medium</td><td>>20 feet</td><td>Pole</td></tr> <tr><td>Sugar Maple</td><td>Low</td><td>>20 feet</td><td>Pole</td></tr> <tr><td>Ironwood</td><td>Medium</td><td>Variable</td><td>Sapling</td></tr> </tbody> </table>		Sub-Canopy Species	Density	Avg. Height	Size	Balsam Fir	Low	Variable	Sapling	White Pine	Low	5 - 10 feet	Sapling	Black Cherry	Low	10 - 20 feet	Sapling	Hemlock	Low	Variable	Sapling	Red Oak	Medium	Variable	Sapling	Red Maple	Medium	Variable	Sapling	Sugar Maple	Medium	Variable	Sapling	Yellow Birch	Low	>20 feet	Sapling	Red Maple	Medium	>20 feet	Pole	Sugar Maple	Low	>20 feet	Pole	Ironwood	Medium	Variable	Sapling
Canopy Species	% Cover	Size Class	DBH	Age																																																																																																							
White Pine	1	XLog	28																																																																																																								
Paper Birch	1	Pole/Sapling	5																																																																																																								
Quaking Aspen	2	Pole/Sapling	5																																																																																																								
Yellow Birch	2	Pole/Sapling	7																																																																																																								
Red Oak	10	XLog/Log	22	105																																																																																																							
Balsam Fir	2	Pole	6																																																																																																								
Sugar Maple	56	Log/Pole/XLog	11	105																																																																																																							
Hemlock	1	Log/XLog	14																																																																																																								
Red Maple	20	Log/Pole/XLog	11																																																																																																								
Black Cherry	5	Log/Pole	10																																																																																																								
Sub-Canopy Species	Density	Avg. Height	Size																																																																																																								
Balsam Fir	Low	Variable	Sapling																																																																																																								
White Pine	Low	5 - 10 feet	Sapling																																																																																																								
Black Cherry	Low	10 - 20 feet	Sapling																																																																																																								
Hemlock	Low	Variable	Sapling																																																																																																								
Red Oak	Medium	Variable	Sapling																																																																																																								
Red Maple	Medium	Variable	Sapling																																																																																																								
Sugar Maple	Medium	Variable	Sapling																																																																																																								
Yellow Birch	Low	>20 feet	Sapling																																																																																																								
Red Maple	Medium	>20 feet	Pole																																																																																																								
Sugar Maple	Low	>20 feet	Pole																																																																																																								
Ironwood	Medium	Variable	Sapling																																																																																																								
2	42110 - Planted Red Pine	Poletimber Well	17.4	38	141-170	N/A	"Sporley Lake Salvage Block" #017-86 - harvest Sept-Oct, 1986. FTP C32-393 - planted RP in 1989 (3-0 stock). Red pine ~ 42' hts. Aspen and hardwood poles in stand at north and east boundaries. Jack pine mixed in throughout. Ground cover of blueberry, sweetfern, St Johns Wort.																																																																																																				
<table border="1"> <thead> <tr> <th>Canopy Species</th> <th>% Cover</th> <th>Size Class</th> <th>DBH</th> <th>Age</th> </tr> </thead> <tbody> <tr><td>Red Maple</td><td>3</td><td>Pole/Sapling</td><td>5</td><td>38</td></tr> <tr><td>Jack Pine</td><td>15</td><td>Pole</td><td>5</td><td>38</td></tr> <tr><td>Quaking Aspen</td><td>5</td><td>Pole</td><td>6</td><td>38</td></tr> <tr><td>Serviceberry (Juneberry)</td><td>2</td><td>Sapling</td><td>1</td><td></td></tr> <tr><td>Red Pine</td><td>75</td><td>Pole</td><td>6</td><td>38</td></tr> </tbody> </table>		Canopy Species	% Cover	Size Class	DBH	Age		Red Maple	3	Pole/Sapling	5	38	Jack Pine	15	Pole	5	38	Quaking Aspen	5	Pole	6	38	Serviceberry (Juneberry)	2	Sapling	1		Red Pine	75	Pole	6	38																																																																											
Canopy Species	% Cover	Size Class	DBH	Age																																																																																																							
Red Maple	3	Pole/Sapling	5	38																																																																																																							
Jack Pine	15	Pole	5	38																																																																																																							
Quaking Aspen	5	Pole	6	38																																																																																																							
Serviceberry (Juneberry)	2	Sapling	1																																																																																																								
Red Pine	75	Pole	6	38																																																																																																							
3	4130 - Aspen	Sapling Well	11.7	15		N/A	"Sporley Fire Edge Sale" #006-06-1 (unit 2,3) - cut summer, 2008. Harvest did not include any oak, red pine, white pine, hemlock or cedar. Some as just trace amounts within stand. Ground cover of sweetfern, braken noted.																																																																																																				
<table border="1"> <thead> <tr> <th>Canopy Species</th> <th>% Cover</th> <th>Size Class</th> <th>DBH</th> <th>Age</th> </tr> </thead> <tbody> <tr><td>Red Oak</td><td>5</td><td>Log/Pole</td><td>12</td><td></td></tr> <tr><td>Jack Pine</td><td>2</td><td>Pole</td><td>6</td><td></td></tr> <tr><td>White Pine</td><td>3</td><td>Log</td><td>14</td><td></td></tr> <tr><td>Red Maple</td><td>5</td><td>Pole/Sapling</td><td>6</td><td></td></tr> <tr><td>Quaking Aspen</td><td>85</td><td>Sapling</td><td>1</td><td>15</td></tr> </tbody> </table>		Canopy Species	% Cover	Size Class	DBH	Age		Red Oak	5	Log/Pole	12		Jack Pine	2	Pole	6		White Pine	3	Log	14		Red Maple	5	Pole/Sapling	6		Quaking Aspen	85	Sapling	1	15	<table border="1"> <thead> <tr> <th>Sub-Canopy Species</th> <th>Density</th> <th>Avg. Height</th> <th>Size</th> </tr> </thead> <tbody> <tr><td>Hazelnut (Beaked)</td><td>Medium</td><td>< 5 feet</td><td>Tall Shrub</td></tr> <tr><td>Willow spp.</td><td>Low</td><td>5 - 10 feet</td><td>Tall Shrub</td></tr> <tr><td>Jack Pine</td><td>Low</td><td>< 5 feet</td><td>Seeding</td></tr> <tr><td>Red Pine</td><td>Low</td><td>< 5 feet</td><td>Seeding</td></tr> <tr><td>Red Maple</td><td>Medium</td><td>< 5 feet</td><td>Sapling</td></tr> </tbody> </table>		Sub-Canopy Species	Density	Avg. Height	Size	Hazelnut (Beaked)	Medium	< 5 feet	Tall Shrub	Willow spp.	Low	5 - 10 feet	Tall Shrub	Jack Pine	Low	< 5 feet	Seeding	Red Pine	Low	< 5 feet	Seeding	Red Maple	Medium	< 5 feet	Sapling																																																	
Canopy Species	% Cover	Size Class	DBH	Age																																																																																																							
Red Oak	5	Log/Pole	12																																																																																																								
Jack Pine	2	Pole	6																																																																																																								
White Pine	3	Log	14																																																																																																								
Red Maple	5	Pole/Sapling	6																																																																																																								
Quaking Aspen	85	Sapling	1	15																																																																																																							
Sub-Canopy Species	Density	Avg. Height	Size																																																																																																								
Hazelnut (Beaked)	Medium	< 5 feet	Tall Shrub																																																																																																								
Willow spp.	Low	5 - 10 feet	Tall Shrub																																																																																																								
Jack Pine	Low	< 5 feet	Seeding																																																																																																								
Red Pine	Low	< 5 feet	Seeding																																																																																																								
Red Maple	Medium	< 5 feet	Sapling																																																																																																								
4	4130 - Aspen	Sapling Well	41.7	26	Immature	N/A	"Engman Lake Hardwood" #010-96 (unit 7) - cut summer, 1997. Also west portion cut as part of "Sporley Fire Edge Sale" #006-06-1 (Unit 1, W. part Unit2) - cut spring, 2007. Oak, white and red pine left. Trace amount of cherry within.																																																																																																				
<table border="1"> <thead> <tr> <th>Canopy Species</th> <th>% Cover</th> <th>Size Class</th> <th>DBH</th> <th>Age</th> </tr> </thead> <tbody> <tr><td>Red Maple</td><td>4</td><td>Sapling</td><td>3</td><td></td></tr> <tr><td>Red Oak</td><td>5</td><td>Log/Pole</td><td>12</td><td></td></tr> <tr><td>Paper Birch</td><td>5</td><td>Sapling/Pole</td><td>4</td><td></td></tr> <tr><td>Quaking Aspen</td><td>40</td><td>Sapling/Pole</td><td>4</td><td>26</td></tr> <tr><td>Bigtooth Aspen</td><td>40</td><td>Sapling/Pole</td><td>4</td><td>26</td></tr> <tr><td>Jack Pine</td><td>2</td><td>Pole/Sapling</td><td>7</td><td></td></tr> <tr><td>White Pine</td><td>2</td><td>Log</td><td>16</td><td></td></tr> <tr><td>Red Pine</td><td>2</td><td>Log</td><td>16</td><td></td></tr> </tbody> </table>		Canopy Species	% Cover	Size Class	DBH	Age		Red Maple	4	Sapling	3		Red Oak	5	Log/Pole	12		Paper Birch	5	Sapling/Pole	4		Quaking Aspen	40	Sapling/Pole	4	26	Bigtooth Aspen	40	Sapling/Pole	4	26	Jack Pine	2	Pole/Sapling	7		White Pine	2	Log	16		Red Pine	2	Log	16		<table border="1"> <thead> <tr> <th>Sub-Canopy Species</th> <th>Density</th> <th>Avg. Height</th> <th>Size</th> </tr> </thead> <tbody> <tr><td>Red Maple</td><td>Medium</td><td>Variable</td><td>Sapling</td></tr> <tr><td>Red Oak</td><td>Medium</td><td>>20 feet</td><td>Sapling</td></tr> <tr><td>Willow spp.</td><td>Low</td><td>< 5 feet</td><td>Tall Shrub</td></tr> <tr><td>Jack Pine</td><td>Low</td><td>Variable</td><td>Sapling</td></tr> <tr><td>Hazelnut (Beaked)</td><td>Medium</td><td>< 5 feet</td><td>Tall Shrub</td></tr> </tbody> </table>		Sub-Canopy Species	Density	Avg. Height	Size	Red Maple	Medium	Variable	Sapling	Red Oak	Medium	>20 feet	Sapling	Willow spp.	Low	< 5 feet	Tall Shrub	Jack Pine	Low	Variable	Sapling	Hazelnut (Beaked)	Medium	< 5 feet	Tall Shrub																																		
Canopy Species	% Cover	Size Class	DBH	Age																																																																																																							
Red Maple	4	Sapling	3																																																																																																								
Red Oak	5	Log/Pole	12																																																																																																								
Paper Birch	5	Sapling/Pole	4																																																																																																								
Quaking Aspen	40	Sapling/Pole	4	26																																																																																																							
Bigtooth Aspen	40	Sapling/Pole	4	26																																																																																																							
Jack Pine	2	Pole/Sapling	7																																																																																																								
White Pine	2	Log	16																																																																																																								
Red Pine	2	Log	16																																																																																																								
Sub-Canopy Species	Density	Avg. Height	Size																																																																																																								
Red Maple	Medium	Variable	Sapling																																																																																																								
Red Oak	Medium	>20 feet	Sapling																																																																																																								
Willow spp.	Low	< 5 feet	Tall Shrub																																																																																																								
Jack Pine	Low	Variable	Sapling																																																																																																								
Hazelnut (Beaked)	Medium	< 5 feet	Tall Shrub																																																																																																								



Stand	Level 4 Cover Type	Size Density	Acres	Stand Age	BA Range	Managed Site	General Comments																																										
5	42120 - Planted Jack Pine	Poletimber Well	23.1	35	81-110	N/A	"Sporley Lake Salvage Block" #017-86 - harvested Sept - Oct., 1986. FTP C32-393: trench/plant JP 1989. Jack pine ~ 40' hts. Ice storm(s) in early 2020's likely caused mortality of 5-10% of stems. Ground cover of blueberry, bracken fern, sweetfern. Trace amount of maple present.																																										
<table border="1"> <thead> <tr> <th>Canopy Species</th> <th>% Cover</th> <th>Size Class</th> <th>DBH</th> <th>Age</th> </tr> </thead> <tbody> <tr> <td>Jack Pine</td> <td>95</td> <td>Pole</td> <td>6</td> <td>35</td> </tr> <tr> <td>Serviceberry (Juneberry)</td> <td>5</td> <td>Sapling</td> <td>1</td> <td></td> </tr> </tbody> </table>		Canopy Species	% Cover	Size Class	DBH	Age		Jack Pine	95	Pole	6	35	Serviceberry (Juneberry)	5	Sapling	1		<table border="1"> <thead> <tr> <th>Sub-Canopy Species</th> <th>Density</th> <th>Avg. Height</th> <th>Size</th> </tr> </thead> <tbody> <tr> <td>Red Maple</td> <td>Low</td> <td>Variable</td> <td>Sapling</td> </tr> <tr> <td>Red Oak</td> <td>Low</td> <td>5 - 10 feet</td> <td>Sapling</td> </tr> <tr> <td>Willow spp.</td> <td>Low</td> <td>5 - 10 feet</td> <td>Tall Shrub</td> </tr> </tbody> </table>		Sub-Canopy Species	Density	Avg. Height	Size	Red Maple	Low	Variable	Sapling	Red Oak	Low	5 - 10 feet	Sapling	Willow spp.	Low	5 - 10 feet	Tall Shrub														
Canopy Species	% Cover	Size Class	DBH	Age																																													
Jack Pine	95	Pole	6	35																																													
Serviceberry (Juneberry)	5	Sapling	1																																														
Sub-Canopy Species	Density	Avg. Height	Size																																														
Red Maple	Low	Variable	Sapling																																														
Red Oak	Low	5 - 10 feet	Sapling																																														
Willow spp.	Low	5 - 10 feet	Tall Shrub																																														
6	42220 - Natural Jack Pine	Poletimber Poor	4.5	38	1-50	N/A	Jack pine seeding in old grass type. Burned in 1986.																																										
<table border="1"> <thead> <tr> <th>Canopy Species</th> <th>% Cover</th> <th>Size Class</th> <th>DBH</th> <th>Age</th> </tr> </thead> <tbody> <tr> <td>Bigtooth Aspen</td> <td>2</td> <td>Pole/Sapling</td> <td>5</td> <td></td> </tr> <tr> <td>Serviceberry (Juneberry)</td> <td>5</td> <td>Sapling</td> <td>1</td> <td></td> </tr> <tr> <td>Jack Pine</td> <td>90</td> <td>Pole</td> <td>5</td> <td>38</td> </tr> <tr> <td>Quaking Aspen</td> <td>3</td> <td>Sapling</td> <td>3</td> <td></td> </tr> </tbody> </table>		Canopy Species	% Cover	Size Class	DBH	Age	Bigtooth Aspen	2	Pole/Sapling	5		Serviceberry (Juneberry)	5	Sapling	1		Jack Pine	90	Pole	5	38	Quaking Aspen	3	Sapling	3																								
Canopy Species	% Cover	Size Class	DBH	Age																																													
Bigtooth Aspen	2	Pole/Sapling	5																																														
Serviceberry (Juneberry)	5	Sapling	1																																														
Jack Pine	90	Pole	5	38																																													
Quaking Aspen	3	Sapling	3																																														
7	42120 - Planted Jack Pine	Poletimber Well	46.2	37	111-140	N/A	"Sporley Lake Salvage Block" #017-86 - harvested Sept - Oct, 1986. FTP C32-393: trench/plant JP (herbicide w/Velpar) - 1989. Part of fire site from 1986. Jack pine ~ 33' hts; north side of road slightly larger in diameter (6"). Low to moderate mortality of jack pine in stand likely from ice storm(s) that occurred in early 2020's. Ground cover of sweetfern, bracken fern, blueberry, grasses. Road edges with juneberry, cherry.																																										
<table border="1"> <thead> <tr> <th>Canopy Species</th> <th>% Cover</th> <th>Size Class</th> <th>DBH</th> <th>Age</th> </tr> </thead> <tbody> <tr> <td>Serviceberry (Juneberry)</td> <td>3</td> <td>Sapling</td> <td>1</td> <td></td> </tr> <tr> <td>Black Cherry</td> <td>2</td> <td>Sapling</td> <td>2</td> <td></td> </tr> <tr> <td>Quaking Aspen</td> <td>3</td> <td>Sapling</td> <td>2</td> <td></td> </tr> <tr> <td>Jack Pine</td> <td>92</td> <td>Pole</td> <td>6</td> <td>37</td> </tr> </tbody> </table>		Canopy Species	% Cover	Size Class	DBH	Age		Serviceberry (Juneberry)	3	Sapling	1		Black Cherry	2	Sapling	2		Quaking Aspen	3	Sapling	2		Jack Pine	92	Pole	6	37																						
Canopy Species	% Cover	Size Class	DBH	Age																																													
Serviceberry (Juneberry)	3	Sapling	1																																														
Black Cherry	2	Sapling	2																																														
Quaking Aspen	3	Sapling	2																																														
Jack Pine	92	Pole	6	37																																													
8	42120 - Planted Jack Pine	Sapling Poor	22.0	41	Unspecified	N/A	FTP 32-323: 24 acres machine planted (7x7) w/ 2-0 JP May, 1985 (15,000 seedlings) and W. 1/2 re-planted 1989 (FTP 32-393). Stand under stocked, site appears poor quality. Most saplings range from 3 - 10 feet in height. A few residual jack pine poles strips left (charred and ~ 4 - 6" dbh). Heavy sweetfern and blueberry impeding further jack pine regeneration establishment.																																										
<table border="1"> <thead> <tr> <th>Canopy Species</th> <th>% Cover</th> <th>Size Class</th> <th>DBH</th> <th>Age</th> </tr> </thead> <tbody> <tr> <td>Red Oak</td> <td>1</td> <td>Sapling</td> <td>1</td> <td></td> </tr> <tr> <td>Black Cherry</td> <td>1</td> <td>Sapling</td> <td>1</td> <td></td> </tr> <tr> <td>Bigtooth Aspen</td> <td>5</td> <td>Sapling</td> <td>2</td> <td></td> </tr> <tr> <td>Jack Pine</td> <td>93</td> <td>Sapling/Pole</td> <td>3</td> <td>41</td> </tr> </tbody> </table>		Canopy Species	% Cover	Size Class	DBH	Age		Red Oak	1	Sapling	1		Black Cherry	1	Sapling	1		Bigtooth Aspen	5	Sapling	2		Jack Pine	93	Sapling/Pole	3	41	<table border="1"> <thead> <tr> <th>Sub-Canopy Species</th> <th>Density</th> <th>Avg. Height</th> <th>Size</th> </tr> </thead> <tbody> <tr> <td>Jack Pine</td> <td>Low</td> <td>< 5 feet</td> <td>Seeding</td> </tr> <tr> <td>Sweet Fern</td> <td>Full</td> <td>< 5 feet</td> <td>Tall Shrub</td> </tr> <tr> <td>Serviceberry (Juneberry)</td> <td>Medium</td> <td>5 - 10 feet</td> <td>Tall Shrub</td> </tr> <tr> <td>Blueberry/Bilberry/Cranberry</td> <td>High</td> <td>< 5 feet</td> <td>Tall Shrub</td> </tr> </tbody> </table>		Sub-Canopy Species	Density	Avg. Height	Size	Jack Pine	Low	< 5 feet	Seeding	Sweet Fern	Full	< 5 feet	Tall Shrub	Serviceberry (Juneberry)	Medium	5 - 10 feet	Tall Shrub	Blueberry/Bilberry/Cranberry	High	< 5 feet	Tall Shrub
Canopy Species	% Cover	Size Class	DBH	Age																																													
Red Oak	1	Sapling	1																																														
Black Cherry	1	Sapling	1																																														
Bigtooth Aspen	5	Sapling	2																																														
Jack Pine	93	Sapling/Pole	3	41																																													
Sub-Canopy Species	Density	Avg. Height	Size																																														
Jack Pine	Low	< 5 feet	Seeding																																														
Sweet Fern	Full	< 5 feet	Tall Shrub																																														
Serviceberry (Juneberry)	Medium	5 - 10 feet	Tall Shrub																																														
Blueberry/Bilberry/Cranberry	High	< 5 feet	Tall Shrub																																														
9	4130 - Aspen	Sapling Poor	24.8	7	Immature	N/A	This stand was harvested in 6/2018. Stand is fully stocked with aspen saplings. A drainage runs south/north across the center of this stand which contains saturated soils and alder.																																										
<table border="1"> <thead> <tr> <th>Canopy Species</th> <th>% Cover</th> <th>Size Class</th> <th>DBH</th> <th>Age</th> </tr> </thead> <tbody> <tr> <td>White Pine</td> <td>1</td> <td>Log/Pole</td> <td>12</td> <td></td> </tr> <tr> <td>Quaking Aspen</td> <td>96</td> <td>Sapling</td> <td>1</td> <td>7</td> </tr> <tr> <td>Red Pine</td> <td>1</td> <td>Log/XLog</td> <td>15</td> <td></td> </tr> <tr> <td>White Spruce</td> <td>2</td> <td>Pole</td> <td>7</td> <td></td> </tr> </tbody> </table>		Canopy Species	% Cover	Size Class	DBH	Age		White Pine	1	Log/Pole	12		Quaking Aspen	96	Sapling	1	7	Red Pine	1	Log/XLog	15		White Spruce	2	Pole	7																							
Canopy Species	% Cover	Size Class	DBH	Age																																													
White Pine	1	Log/Pole	12																																														
Quaking Aspen	96	Sapling	1	7																																													
Red Pine	1	Log/XLog	15																																														
White Spruce	2	Pole	7																																														
10	42120 - Planted Jack Pine	Poletimber Medium	33.2	37	81-110	N/A	Old fire area with numerous plow lines within (burned both in 1986 and portion on 5/12/2004). Tree density is sparse in places. FTP 32-393: plant/trench JP ~ W. half of stand 1989. Low to moderate mortality of jack pine in stand likely from ice storm(s) in early 2020's.																																										
<table border="1"> <thead> <tr> <th>Canopy Species</th> <th>% Cover</th> <th>Size Class</th> <th>DBH</th> <th>Age</th> </tr> </thead> <tbody> <tr> <td>Jack Pine</td> <td>100</td> <td>Pole</td> <td>6</td> <td>37</td> </tr> </tbody> </table>		Canopy Species	% Cover	Size Class	DBH	Age		Jack Pine	100	Pole	6	37	<table border="1"> <thead> <tr> <th>Sub-Canopy Species</th> <th>Density</th> <th>Avg. Height</th> <th>Size</th> </tr> </thead> <tbody> <tr> <td>Sweet Fern</td> <td>Full</td> <td>< 5 feet</td> <td>Tall Shrub</td> </tr> </tbody> </table>		Sub-Canopy Species	Density	Avg. Height	Size	Sweet Fern	Full	< 5 feet	Tall Shrub																											
Canopy Species	% Cover	Size Class	DBH	Age																																													
Jack Pine	100	Pole	6	37																																													
Sub-Canopy Species	Density	Avg. Height	Size																																														
Sweet Fern	Full	< 5 feet	Tall Shrub																																														



Stand	Level 4 Cover Type	Size Density	Acres	Stand Age	BA Range	Managed Site	General Comments																																																																	
11	4130 - Aspen	Poletimber Well	51.1	46	81-110	N/A	"Farmer's Lake Block" #12/77A - cut 1977-78 (unit 1,2). Some dead stems, dieback and breakage. Stand gradually increase in diameter (from S to N) with more hardwood, fir in the sub-canopy (transitioning into better site). A few clones of bigtooth aspen poles (residual), mainly along private boundary and slope. Ground cover of blueberry, sweetfern.																																																																	
<table border="1"> <thead> <tr> <th>Canopy Species</th> <th>% Cover</th> <th>Size Class</th> <th>DBH</th> <th>Age</th> </tr> </thead> <tbody> <tr> <td>Jack Pine</td> <td>2</td> <td>Log/Pole</td> <td>10</td> <td></td> </tr> <tr> <td>Black Cherry</td> <td>2</td> <td>Sapling/Pole</td> <td>4</td> <td></td> </tr> <tr> <td>Red Maple</td> <td>2</td> <td>Pole/Sapling</td> <td>7</td> <td></td> </tr> <tr> <td>Balsam Fir</td> <td>4</td> <td>Pole/Sapling</td> <td>5</td> <td></td> </tr> <tr> <td>Quaking Aspen</td> <td>80</td> <td>Pole</td> <td>6</td> <td>46</td> </tr> <tr> <td>Bigtooth Aspen</td> <td>8</td> <td>Log/Pole</td> <td>10</td> <td></td> </tr> <tr> <td>White Spruce</td> <td>2</td> <td>Log</td> <td>14</td> <td></td> </tr> </tbody> </table>		Canopy Species	% Cover	Size Class	DBH	Age		Jack Pine	2	Log/Pole	10		Black Cherry	2	Sapling/Pole	4		Red Maple	2	Pole/Sapling	7		Balsam Fir	4	Pole/Sapling	5		Quaking Aspen	80	Pole	6	46	Bigtooth Aspen	8	Log/Pole	10		White Spruce	2	Log	14		<table border="1"> <thead> <tr> <th>Sub-Canopy Species</th> <th>Density</th> <th>Avg. Height</th> <th>Size</th> </tr> </thead> <tbody> <tr> <td>Red Maple</td> <td>Medium</td> <td>5 - 10 feet</td> <td>Sapling</td> </tr> <tr> <td>Paper Birch</td> <td>Low</td> <td>10 - 20 feet</td> <td>Sapling</td> </tr> <tr> <td>Balsam Fir</td> <td>Low</td> <td>Variable</td> <td>Sapling</td> </tr> <tr> <td>Jack Pine</td> <td>Low</td> <td>10 - 20 feet</td> <td>Sapling</td> </tr> <tr> <td>Black Cherry</td> <td>Low</td> <td>10 - 20 feet</td> <td>Sapling</td> </tr> <tr> <td>Hazelnut (Beaked)</td> <td>Medium</td> <td>< 5 feet</td> <td>Tall Shrub</td> </tr> </tbody> </table>		Sub-Canopy Species	Density	Avg. Height	Size	Red Maple	Medium	5 - 10 feet	Sapling	Paper Birch	Low	10 - 20 feet	Sapling	Balsam Fir	Low	Variable	Sapling	Jack Pine	Low	10 - 20 feet	Sapling	Black Cherry	Low	10 - 20 feet	Sapling	Hazelnut (Beaked)	Medium	< 5 feet	Tall Shrub
Canopy Species	% Cover	Size Class	DBH	Age																																																																				
Jack Pine	2	Log/Pole	10																																																																					
Black Cherry	2	Sapling/Pole	4																																																																					
Red Maple	2	Pole/Sapling	7																																																																					
Balsam Fir	4	Pole/Sapling	5																																																																					
Quaking Aspen	80	Pole	6	46																																																																				
Bigtooth Aspen	8	Log/Pole	10																																																																					
White Spruce	2	Log	14																																																																					
Sub-Canopy Species	Density	Avg. Height	Size																																																																					
Red Maple	Medium	5 - 10 feet	Sapling																																																																					
Paper Birch	Low	10 - 20 feet	Sapling																																																																					
Balsam Fir	Low	Variable	Sapling																																																																					
Jack Pine	Low	10 - 20 feet	Sapling																																																																					
Black Cherry	Low	10 - 20 feet	Sapling																																																																					
Hazelnut (Beaked)	Medium	< 5 feet	Tall Shrub																																																																					
12	42220 - Natural Jack Pine	Poletimber Poor	26.3	38	51-80	N/A	Area left to regenerate naturally after 1986 wildfire. Old plow lines still visible. Juneberry and other shrubs present. Sparse. Ground cover of grass, sweetfern, blueberry.																																																																	
<table border="1"> <thead> <tr> <th>Canopy Species</th> <th>% Cover</th> <th>Size Class</th> <th>DBH</th> <th>Age</th> </tr> </thead> <tbody> <tr> <td>Jack Pine</td> <td>100</td> <td>Pole/Log</td> <td>9</td> <td>38</td> </tr> </tbody> </table>		Canopy Species	% Cover	Size Class	DBH	Age		Jack Pine	100	Pole/Log	9	38																																																												
Canopy Species	% Cover	Size Class	DBH	Age																																																																				
Jack Pine	100	Pole/Log	9	38																																																																				
13	4130 - Aspen	Sapling Poor	14.3	45	1-50	N/A	Cut in 1978 (part of pre-inventory stand 11). Very low quality aspen - likely within burned area of 1986 wildfire																																																																	
<table border="1"> <thead> <tr> <th>Canopy Species</th> <th>% Cover</th> <th>Size Class</th> <th>DBH</th> <th>Age</th> </tr> </thead> <tbody> <tr> <td>Jack Pine</td> <td>10</td> <td>Pole/Log</td> <td>8</td> <td></td> </tr> <tr> <td>Black Cherry</td> <td>5</td> <td>Sapling</td> <td>4</td> <td></td> </tr> <tr> <td>Serviceberry (Juneberry)</td> <td>5</td> <td>Sapling</td> <td>1</td> <td></td> </tr> <tr> <td>Quaking Aspen</td> <td>70</td> <td>Sapling/Pole</td> <td>3</td> <td>45</td> </tr> <tr> <td>Bigtooth Aspen</td> <td>10</td> <td>Sapling/Pole</td> <td>3</td> <td>45</td> </tr> </tbody> </table>		Canopy Species	% Cover	Size Class	DBH	Age		Jack Pine	10	Pole/Log	8		Black Cherry	5	Sapling	4		Serviceberry (Juneberry)	5	Sapling	1		Quaking Aspen	70	Sapling/Pole	3	45	Bigtooth Aspen	10	Sapling/Pole	3	45	<table border="1"> <thead> <tr> <th>Sub-Canopy Species</th> <th>Density</th> <th>Avg. Height</th> <th>Size</th> </tr> </thead> <tbody> <tr> <td>Black Cherry</td> <td>Low</td> <td>10 - 20 feet</td> <td>Tall Shrub</td> </tr> <tr> <td>Balsam Fir</td> <td>Low</td> <td>Variable</td> <td>Sapling</td> </tr> <tr> <td>Jack Pine</td> <td>Low</td> <td>10 - 20 feet</td> <td>Sapling</td> </tr> </tbody> </table>		Sub-Canopy Species	Density	Avg. Height	Size	Black Cherry	Low	10 - 20 feet	Tall Shrub	Balsam Fir	Low	Variable	Sapling	Jack Pine	Low	10 - 20 feet	Sapling																						
Canopy Species	% Cover	Size Class	DBH	Age																																																																				
Jack Pine	10	Pole/Log	8																																																																					
Black Cherry	5	Sapling	4																																																																					
Serviceberry (Juneberry)	5	Sapling	1																																																																					
Quaking Aspen	70	Sapling/Pole	3	45																																																																				
Bigtooth Aspen	10	Sapling/Pole	3	45																																																																				
Sub-Canopy Species	Density	Avg. Height	Size																																																																					
Black Cherry	Low	10 - 20 feet	Tall Shrub																																																																					
Balsam Fir	Low	Variable	Sapling																																																																					
Jack Pine	Low	10 - 20 feet	Sapling																																																																					
14	42220 - Natural Jack Pine	Poletimber Medium	17.0	38	1-50	N/A	Mixed jack pine/aspen. "Farmer's Lake Block" #012-77A (unit 3) - cut 1977-78. Harvested all except oak, red pine. A few old plow lines noted from fire in 1986. Ground cover of bracken fern, wintergreen, trailing arbutus, sweetfern. FTP32-83: hand plant 3-0 RP (10 acres - 6,000 trees) 11/14/78 with YACC crew. No real evidence of these anymore, due to 1986 fire. Possibly some planted jack pine, but not much. Small (less than 1 acre) patches of aspen poles in stand boundary.																																																																	
<table border="1"> <thead> <tr> <th>Canopy Species</th> <th>% Cover</th> <th>Size Class</th> <th>DBH</th> <th>Age</th> </tr> </thead> <tbody> <tr> <td>Red Pine</td> <td>1</td> <td>Log</td> <td>15</td> <td></td> </tr> <tr> <td>Quaking Aspen</td> <td>8</td> <td>Sapling/Pole</td> <td>4</td> <td>45</td> </tr> <tr> <td>Jack Pine</td> <td>75</td> <td>Pole/Sapling</td> <td>5</td> <td>38</td> </tr> <tr> <td>Black Cherry</td> <td>2</td> <td>Pole</td> <td>5</td> <td></td> </tr> <tr> <td>Bigtooth Aspen</td> <td>9</td> <td>Sapling/Pole</td> <td>4</td> <td>45</td> </tr> <tr> <td>Red Maple</td> <td>5</td> <td>Sapling</td> <td>3</td> <td></td> </tr> </tbody> </table>		Canopy Species	% Cover	Size Class	DBH	Age		Red Pine	1	Log	15		Quaking Aspen	8	Sapling/Pole	4	45	Jack Pine	75	Pole/Sapling	5	38	Black Cherry	2	Pole	5		Bigtooth Aspen	9	Sapling/Pole	4	45	Red Maple	5	Sapling	3		<table border="1"> <thead> <tr> <th>Sub-Canopy Species</th> <th>Density</th> <th>Avg. Height</th> <th>Size</th> </tr> </thead> <tbody> <tr> <td>Red Pine</td> <td>Low</td> <td>10 - 20 feet</td> <td>Sapling</td> </tr> <tr> <td>Black Cherry</td> <td>Low</td> <td>10 - 20 feet</td> <td>Sapling</td> </tr> <tr> <td>Quaking Aspen</td> <td>Low</td> <td>10 - 20 feet</td> <td>Sapling</td> </tr> <tr> <td>Serviceberry (Juneberry)</td> <td>Medium</td> <td>10 - 20 feet</td> <td>Tall Shrub</td> </tr> </tbody> </table>		Sub-Canopy Species	Density	Avg. Height	Size	Red Pine	Low	10 - 20 feet	Sapling	Black Cherry	Low	10 - 20 feet	Sapling	Quaking Aspen	Low	10 - 20 feet	Sapling	Serviceberry (Juneberry)	Medium	10 - 20 feet	Tall Shrub													
Canopy Species	% Cover	Size Class	DBH	Age																																																																				
Red Pine	1	Log	15																																																																					
Quaking Aspen	8	Sapling/Pole	4	45																																																																				
Jack Pine	75	Pole/Sapling	5	38																																																																				
Black Cherry	2	Pole	5																																																																					
Bigtooth Aspen	9	Sapling/Pole	4	45																																																																				
Red Maple	5	Sapling	3																																																																					
Sub-Canopy Species	Density	Avg. Height	Size																																																																					
Red Pine	Low	10 - 20 feet	Sapling																																																																					
Black Cherry	Low	10 - 20 feet	Sapling																																																																					
Quaking Aspen	Low	10 - 20 feet	Sapling																																																																					
Serviceberry (Juneberry)	Medium	10 - 20 feet	Tall Shrub																																																																					
15	42120 - Planted Jack Pine	Sapling Well	229.0	37	81-110	N/A	Large tract burned by wildfire in 1986. W. side of Sporley Lk Rd had been harvested under permit #15/69 - ~30 acres - from fire in 1969. FTP 32-331: for JP thinning in 1985; site was burned by fire in May, 1986, though. "Sporley Lake Salvage Block" #017-86 - harvested spring/summer, 1987. FTP 32-375 (W. side of Sporley Lk Rd) - chop, trench, plant jack pine ~ 1989. Planting records for E. side not found, but establishment should be very comparable (old examiners noted used - OI stands 19,20). East side ~ 1990. Large portions of stand received moderate damage from ice storm(s) in early 2020's.																																																																	
<table border="1"> <thead> <tr> <th>Canopy Species</th> <th>% Cover</th> <th>Size Class</th> <th>DBH</th> <th>Age</th> </tr> </thead> <tbody> <tr> <td>Jack Pine</td> <td>100</td> <td>Sapling/Pole</td> <td>4</td> <td>37</td> </tr> </tbody> </table>		Canopy Species	% Cover	Size Class	DBH	Age		Jack Pine	100	Sapling/Pole	4	37	<table border="1"> <thead> <tr> <th>Sub-Canopy Species</th> <th>Density</th> <th>Avg. Height</th> <th>Size</th> </tr> </thead> <tbody> <tr> <td>Red Pine</td> <td>Trace</td> <td>10 - 20 feet</td> <td>Sapling</td> </tr> <tr> <td>Jack Pine</td> <td>Trace</td> <td>>20 feet</td> <td>Sapling</td> </tr> <tr> <td>Sweet Fern</td> <td>Medium</td> <td>< 5 feet</td> <td>Tall Shrub</td> </tr> </tbody> </table>		Sub-Canopy Species	Density	Avg. Height	Size	Red Pine	Trace	10 - 20 feet	Sapling	Jack Pine	Trace	>20 feet	Sapling	Sweet Fern	Medium	< 5 feet	Tall Shrub																																										
Canopy Species	% Cover	Size Class	DBH	Age																																																																				
Jack Pine	100	Sapling/Pole	4	37																																																																				
Sub-Canopy Species	Density	Avg. Height	Size																																																																					
Red Pine	Trace	10 - 20 feet	Sapling																																																																					
Jack Pine	Trace	>20 feet	Sapling																																																																					
Sweet Fern	Medium	< 5 feet	Tall Shrub																																																																					



Stand	Level 4 Cover Type	Size Density	Acres	Stand Age	BA Range	Managed Site	General Comments
-------	--------------------	--------------	-------	-----------	----------	--------------	------------------

16	4199 - Other Mixed Upland Deciduous	Sapling Medium	35.6	37	1-50	N/A	Permit #2/79A - cut spring, 1979. Patchy jack pine (natural origin), esp at south end; old fire plow lines (from 1986 wildfire) still visible. Some low quality, fire origin aspen also - heavy stem breakage. Natural red and white pine, oak doing well on site; oak regeneration established near residual oak found. Red maple and oak stump sprouts throughout. Ground cover of wintergreen, bracken fern, sweetfern noted.	
Canopy Species		% Cover	Size Class	DBH	Age			
Jack Pine		5	Pole	5				
Paper Birch		5	Sapling	4	37			
Red Oak		5	Log	10				
Red Oak		20	Sapling	3	37			
White Pine		5	Sapling	4	37			
Red Maple		30	Sapling	3	37			
Quaking Aspen		25	Sapling/Pole	4	37			
Red Pine		5	XLog/Log	18				

17	42140 - Planted Mixed Pine	Poletimber Well	40.4	40	111-140	N/A	"Farmer's Lake West Block" #3/79A - cut summer, 1979. FTP 32-132: roller chop slash 4/1980 and machine planted 3-0 RP May, 1980. Site was (hand) re-planted to 2-0 RP (24,000 trees) May, 1986 after wildfire destroyed plantation. Red pine is mostly smaller diameter, shorter than jack pine (natural); both are fairly limby. The west half of stand is heavier to pure red pine and more open. Trace amount of aspen within.	
Canopy Species		% Cover	Size Class	DBH	Age			
Red Pine		50	Pole	7	40			
Jack Pine		50	Pole/Sapling	7	37			
Sub-Canopy Species		Density	Avg. Height	Size				
Jack Pine		Low	< 5 feet	Seeding				
Red Maple		Low	Variable	Sapling				
Serviceberry (Juneberry)		Low	10 - 20 feet	Sapling				
Red Pine		Low	10 - 20 feet	Sapling				

18	42120 - Planted Jack Pine	Poletimber Well	5.4	37	51-80	N/A	Some older jack pine (blowdown, dead within) around leatherleaf bog/dried pond; planted red and jack pine surround. Trace amount of red pine subcanopy and some hazel (west side of stand).	
Canopy Species		% Cover	Size Class	DBH	Age			
Quaking Aspen		10	Sapling	3				
Red Pine		30	Pole	7	40			
Jack Pine		20	Log/Pole	11				
Jack Pine		40	Pole/Sapling	6	37			
Sub-Canopy Species		Density	Avg. Height	Size				
Jack Pine		Low	10 - 20 feet	Sapling				

19	42260 - Natural Pine, Mixed Deciduous	Sawtimber Well	41.7	94	81-110	N/A	Natural pine stand with oak. N. of Co Rd 456 was treated under permit #2/79A - spring, 1979. S. of Co Rd 456 harvested under permit #9/71A (portions) - removed marked red and white pine, white spruce greater than 12" and all jack pine, aspen, birch from 1971-73. Both areas with a fair amount of mixed regeneration heavy to red oak, red maple, white pine, birch, and aspen; north end with some dead tops in white pine, old red pine snags and charred stumps from 1986 fire. South end, primarily along Farmer Lk Rd and Co Rd 456, had 3 - 0 red pine hand planted, FTP 32-82, by YACC crews in Nov, 1978.	
Canopy Species		% Cover	Size Class	DBH	Age			
Red Pine		55	XLog/Log	18	94			
Red Maple		2	Pole	8				
Paper Birch		4	Pole/Sapling	7	51			
Jack Pine		5	Log/Pole	10				
Quaking Aspen		2	Pole	7	51			
Red Oak		22	Log/Pole/XLog	12				
White Pine		10	Log	16				
Sub-Canopy Species		Density	Avg. Height	Size				
Quaking Aspen		High	>20 feet	Sapling				
White Pine		Medium	Variable	Sapling				
Red Maple		Medium	Variable	Sapling				
Red Oak		Medium	Variable	Sapling				
Balsam Fir		Low	Variable	Sapling				
Red Pine		Medium	Variable	Sapling				
Paper Birch		Medium	>20 feet	Sapling				



Stand	Level 4 Cover Type	Size Density	Acres	Stand Age	BA Range	Managed Site	General Comments
-------	--------------------	--------------	-------	-----------	----------	--------------	------------------

20 6225 - Bog Nonstocked 18.4 No Leatherleaf bog.

Sub-Canopy Species	Density	Avg. Height	Size
Paper Birch	Trace		Sapling
Hemlock	Trace		Sapling
Jack Pine	Trace		Sapling
Leatherleaf	Full		Tall Shrub
Red Pine	Trace		Sapling
White Pine	Low		Seeding

21 4136 - Aspen, Mixed Conifer Poletimber Well 19.1 52 81-110 N/A Permit #9/71A - cut marked red and white pine, all white spruce greater than 12" and all jack pine, aspen, birch - 1971-73. Stand species diversity is high.

Canopy Species	% Cover	Size Class	DBH	Age
Black Spruce	2	Pole	6	
Red Maple	5	Sapling/Pole	4	
White Pine	5	Log	14	
Red Oak	15	Log/Pole	12	94
Red Pine	10	Log	16	94
Quaking Aspen	10	Pole	7	52
Bigtooth Aspen	40	Pole	8	52
Balsam Fir	2	Pole	7	
Paper Birch	5	Sapling/Pole	4	52
Jack Pine	4	Pole/Log	9	
White Spruce	2	Pole/Log	9	

Sub-Canopy Species	Density	Avg. Height	Size
White Pine	Medium	Variable	Seeding
Black Spruce	Low	5 - 10 feet	Sapling
Quaking Aspen	Medium	>20 feet	Sapling
Paper Birch	Medium	5 - 10 feet	Sapling
Red Oak	Medium	Variable	Sapling
Red Pine	Low	5 - 10 feet	Seeding
Balsam Fir	Low	Variable	Sapling
Red Maple	Medium	10 - 20 feet	Sapling
Hazelnut (Beaked)	Medium	< 5 feet	Tall Shrub

22 42290 - Natural Mixed Pine Sawtimber Medium 20.6 92 51-80 N/A "Gravels Pond Block" #011-96 - cut fall, 1998. Removed about 16-17 cd/ac of aspen, birch, jack pine and spruce, leaving RP, WP and oak. Many free to grow aspen, oak, and red maple saplings present in the unit following 1998 harvest. Ground cover of lily, bracken fern, wintergreen, trailing arbutus.

Canopy Species	% Cover	Size Class	DBH	Age
Red Pine	50	Log/XLog	15	92
White Pine	20	Log/XLog/Pole	12	
Jack Pine	2	Pole	7	
Red Oak	25	Log/XLog/Pole	14	
White Spruce	3	Pole	8	

Sub-Canopy Species	Density	Avg. Height	Size
Red Oak	Medium	10 - 20 feet	Sapling
Balsam Fir	Low	Variable	Sapling
White Pine	Medium	Variable	Sapling
Red Pine	Low	< 5 feet	Seeding
Hazelnut (Beaked)	Medium	< 5 feet	Tall Shrub
Red Maple	High	Variable	Sapling
Quaking Aspen	Medium	>20 feet	Sapling
Cherry (spp.)	Low	5 - 10 feet	Sapling

23 500 - Water Nonstocked 5.5 No Pond



Stand	Level 4 Cover Type	Size Density	Acres	Stand Age	BA Range	Managed Site	General Comments		
24	42260 - Natural Pine, Mixed Deciduous	Sawtimber Poor	169.0	86	1-50	N/A	Aspen, birch removed under permit #014-85-2 in 1985. Also, "Farmer Lake Sale" #007-06-1 - harvested fall, 2006 - fall, 2009. Mostly aspen regeneration, good red oak and white pine regeneration throughout; red and jack pine somewhat spotty, but present. Stand also contains a few small leatherleaf depressions.		
Canopy Species		% Cover	Size Class		DBH	Age		Sub-Canopy Species	
Red Pine		40	Log/Pole/XLog		14	86		Balsam Fir	
Red Oak		20	Log/Pole		12			Red Pine	
Paper Birch		2	Pole/Sapling		5	39		Bigtooth Aspen	
Red Maple		3	Pole/Sapling		6			Paper Birch	
White Pine		30	Log/Pole/XLog		12			White Pine	
Bigtooth Aspen		5	Pole/Sapling		5	39		Quaking Aspen	
								Red Maple	
								Jack Pine	
								Red Oak	
								Hazelnut (Beaked)	
								Density	
							Avg. Height		
							Size		
25	6225 - Bog	Nonstocked	1.0			No	Small leatherleaf bog.		
26	6225 - Bog	Nonstocked	1.8			No	Small leatherleaf depression.		
27	3104 - Degraded	Nonstocked	12.0			No	Powerline and R.O.W. Dirt two track through corridor being used by ORV's.		
28	6124 - Lowland Spruce-Fir	Poletimber Poor	8.6	88	1-50	N/A	Stand is lowland spruce/fir poles. Contains a short drainage into Little Lake. This stand is part of a concentrated recreational area SCA.		
Canopy Species		% Cover	Size Class		DBH	Age		Sub-Canopy Species	
Balsam Fir		10	Pole/Sapling		6			Balsam Fir	
Black Spruce		45	Pole		7	88		Quaking Aspen	
Tamarack		20	Sapling/Pole		4	88		Tag Alder	
Paper Birch		10	Pole		7			Leatherleaf	
Red Maple		10	Pole/Sapling		7				
White Pine		5	XLog/Log		18				
								Density	
								Avg. Height	
							Size		



Stand	Level 4 Cover Type	Size Density	Acres	Stand Age	BA Range	Managed Site	General Comments				
29	4113 - R.Maple, Conifer	Poletimber Medium	20.7	94	81-110	N/A	Stand split from Little Lake Campground stand in 2024 because the Recreational SCA was adjusted to only include the campground west of the road. Stand is mostly low quality red maple, with overmature aspen, birch, with mature spruce and balsam fir mixed in. Balsam fir showing moderate mortality from spruce bud worm. Trace amount of jack and red pine, mainly within campground area. Contains interior wet pockets and a low swale with large, weeviled, white pine, some cedar adjacent. Ground cover of lily, club moss, starflower noted.				
Canopy Species		% Cover	Size Class	DBH	Age	Sub-Canopy Species		Density	Avg. Height	Size	
Black Spruce		2	Pole	6		Balsam Fir		High	Variable	Sapling	
Northern White Cedar		3	Pole/Log	8		Black Spruce		Low	Variable	Sapling	
White Pine		8	XLog	26		White Pine		Low	5 - 10 feet	Sapling	
Balsam Fir		4	Pole/Sapling	6		White Spruce		Low	Variable	Sapling	
Paper Birch		5	Log/Pole	10	94						
Black Cherry		5	Pole/Log	8							
Quaking Aspen		4	Pole/Log	9	94						
Red Maple		62	Pole/Log	8	94						
Hemlock		3	Log/Pole	10							
White Spruce		4	Log	12							
30	42110 - Planted Red Pine	Poletimber Well	121.4	29	51-80	N/A		Several harvests: permit #017-88-2 - cut spring, 1988 (aspen, birch, maple) and permit #029-84-2 - cut 1985. "Ski Hill Road Jack Pine" sale #012-96 (unit 2 - 11) - cut winter - spring, 1997 and summer, 1997 (unit 11 - far south end of stand). FTP 32-560: herbicided summer, 1997 (Accord/Garlon 4), trenched and hand planted 3 - 0 red pine in May, 1998. Spacial distribution of size classes is variable, with portions heavier to 11+" dbh red and white pine, and other portions heavier to 5-7" dbh red pine and jack pine.			
Canopy Species		% Cover	Size Class	DBH	Age	Sub-Canopy Species			Density	Avg. Height	Size
White Pine		6	Log	14		Paper Birch			Low	>20 feet	Sapling
Red Pine		9	Log	12	94	Cherry (spp.)			Low	5 - 10 feet	Sapling
Red Pine		70	Pole	5	29	Balsam Fir			Low	5 - 10 feet	Sapling
Jack Pine		10	Sapling/Pole	4		White Pine			Medium	5 - 10 feet	Sapling
Quaking Aspen		2	Pole	6	29	Red Pine			Medium	10 - 20 feet	Sapling
Red Maple		2	Pole	9		Jack Pine			Medium	10 - 20 feet	Sapling
Red Oak		1	Log	11		Red Maple			Low	Variable	Sapling
						Hazelnut (Beaked)			Low	< 5 feet	Tall Shrub
						Quaking Aspen			Medium	>20 feet	Sapling
						Bigtooth Aspen			Medium	10 - 20 feet	Sapling
31	6225 - Bog	Nonstocked	7.7			No	Leatherleaf depression with grass and sphagnum moss. Very few trees present.				
32	42210 - Natural Red Pine	Sawtimber Well	38.2	92	81-110	N/A	"Ski Hill Road Jack Pine" #012-96-1 (unit 1) - cut Jan, 1997 - left all red, white pine and oak. Permit #021-84-2 - harvested aspen. Good diversity of regeneration.				
Canopy Species		% Cover	Size Class	DBH	Age	Sub-Canopy Species		Density	Avg. Height	Size	
Red Oak		5	Log	12		Quaking Aspen		Medium	10 - 20 feet	Sapling	
Quaking Aspen		3	Pole/Sapling	7	40	White Pine		Medium	Variable	Sapling	
White Pine		22	Log/Pole	12		Red Pine		Low	Variable	Sapling	
Red Pine		65	Log/Pole	13	92	Red Maple		Medium	Variable	Sapling	
Red Maple		2	Pole	6							
Jack Pine		3	Pole/Log	8							



Stand	Level 4 Cover Type	Size Density	Acres	Stand Age	BA Range	Managed Site	General Comments																																																											
33	42290 - Natural Mixed Pine	Poletimber Medium	6.2	69	81-110	N/A	Evidence of FTP 32-391: trench/plant 2 - 0 RP 1989 (and herbicided sp, 1988 w/Weedone) along W/NW end. Otherwise, stand is heavily weeviled white pine with low quality aspen, and a few mature jack pine. BA highly variable.																																																											
<table border="1"> <thead> <tr> <th>Canopy Species</th> <th>% Cover</th> <th>Size Class</th> <th>DBH</th> <th>Age</th> </tr> </thead> <tbody> <tr> <td>White Spruce</td> <td>2</td> <td>Pole</td> <td>8</td> <td></td> </tr> <tr> <td>White Pine</td> <td>50</td> <td>Pole/Log</td> <td>9</td> <td>69</td> </tr> <tr> <td>Red Pine</td> <td>28</td> <td>Log/Pole/XLog</td> <td>10</td> <td></td> </tr> <tr> <td>Jack Pine</td> <td>5</td> <td>Pole/Log</td> <td>9</td> <td></td> </tr> <tr> <td>Black Cherry</td> <td>2</td> <td>Pole/Sapling</td> <td>5</td> <td></td> </tr> <tr> <td>Quaking Aspen</td> <td>13</td> <td>Pole/Log</td> <td>8</td> <td>54</td> </tr> </tbody> </table>		Canopy Species	% Cover	Size Class	DBH	Age	White Spruce	2	Pole	8		White Pine	50	Pole/Log	9	69	Red Pine	28	Log/Pole/XLog	10		Jack Pine	5	Pole/Log	9		Black Cherry	2	Pole/Sapling	5		Quaking Aspen	13	Pole/Log	8	54	<table border="1"> <thead> <tr> <th>Sub-Canopy Species</th> <th>Density</th> <th>Avg. Height</th> <th>Size</th> </tr> </thead> <tbody> <tr> <td>White Pine</td> <td>Medium</td> <td>Variable</td> <td>Sapling</td> </tr> <tr> <td>Balsam Fir</td> <td>Low</td> <td>>20 feet</td> <td>Sapling</td> </tr> <tr> <td>Red Pine</td> <td>Low</td> <td>>20 feet</td> <td>Sapling</td> </tr> <tr> <td>Jack Pine</td> <td>Low</td> <td>5 - 10 feet</td> <td>Sapling</td> </tr> <tr> <td>Black Cherry</td> <td>Medium</td> <td>< 5 feet</td> <td>Seeding</td> </tr> <tr> <td>Red Pine</td> <td>Low</td> <td>< 5 feet</td> <td>Seeding</td> </tr> </tbody> </table>		Sub-Canopy Species	Density	Avg. Height	Size	White Pine	Medium	Variable	Sapling	Balsam Fir	Low	>20 feet	Sapling	Red Pine	Low	>20 feet	Sapling	Jack Pine	Low	5 - 10 feet	Sapling	Black Cherry	Medium	< 5 feet	Seeding	Red Pine	Low	< 5 feet	Seeding
Canopy Species	% Cover	Size Class	DBH	Age																																																														
White Spruce	2	Pole	8																																																															
White Pine	50	Pole/Log	9	69																																																														
Red Pine	28	Log/Pole/XLog	10																																																															
Jack Pine	5	Pole/Log	9																																																															
Black Cherry	2	Pole/Sapling	5																																																															
Quaking Aspen	13	Pole/Log	8	54																																																														
Sub-Canopy Species	Density	Avg. Height	Size																																																															
White Pine	Medium	Variable	Sapling																																																															
Balsam Fir	Low	>20 feet	Sapling																																																															
Red Pine	Low	>20 feet	Sapling																																																															
Jack Pine	Low	5 - 10 feet	Sapling																																																															
Black Cherry	Medium	< 5 feet	Seeding																																																															
Red Pine	Low	< 5 feet	Seeding																																																															
34	42110 - Planted Red Pine	Poletimber Well	46.8	36	111-140	N/A	"Cohen Field Block" #032-86 - cut 1987-1991. Removed larger red pine (greater than 12") and all aspen, jack pine, white pine. FTP 32-442: herbicide (Valpar), trench and hand plant 2 - 0 red pine ~ fall, 1990. Stand contains natural jack pine regeneration. Ground cover of sweetfern, wintergreen, blueberry.																																																											
<table border="1"> <thead> <tr> <th>Canopy Species</th> <th>% Cover</th> <th>Size Class</th> <th>DBH</th> <th>Age</th> </tr> </thead> <tbody> <tr> <td>White Pine</td> <td>2</td> <td>Log/Pole</td> <td>10</td> <td></td> </tr> <tr> <td>Quaking Aspen</td> <td>2</td> <td>Sapling</td> <td>4</td> <td></td> </tr> <tr> <td>Red Pine</td> <td>3</td> <td>Log</td> <td>11</td> <td></td> </tr> <tr> <td>Jack Pine</td> <td>10</td> <td>Pole</td> <td>6</td> <td></td> </tr> <tr> <td>White Pine</td> <td>5</td> <td>Pole</td> <td>5</td> <td></td> </tr> <tr> <td>Red Pine</td> <td>78</td> <td>Pole</td> <td>6</td> <td>36</td> </tr> </tbody> </table>		Canopy Species	% Cover	Size Class	DBH	Age	White Pine	2	Log/Pole	10		Quaking Aspen	2	Sapling	4		Red Pine	3	Log	11		Jack Pine	10	Pole	6		White Pine	5	Pole	5		Red Pine	78	Pole	6	36	<table border="1"> <thead> <tr> <th>Sub-Canopy Species</th> <th>Density</th> <th>Avg. Height</th> <th>Size</th> </tr> </thead> <tbody> <tr> <td>White Pine</td> <td>Low</td> <td>Variable</td> <td>Sapling</td> </tr> <tr> <td>Cherry (spp.)</td> <td>Low</td> <td>5 - 10 feet</td> <td>Sapling</td> </tr> <tr> <td>Red Pine</td> <td>Low</td> <td>Variable</td> <td>Sapling</td> </tr> </tbody> </table>		Sub-Canopy Species	Density	Avg. Height	Size	White Pine	Low	Variable	Sapling	Cherry (spp.)	Low	5 - 10 feet	Sapling	Red Pine	Low	Variable	Sapling												
Canopy Species	% Cover	Size Class	DBH	Age																																																														
White Pine	2	Log/Pole	10																																																															
Quaking Aspen	2	Sapling	4																																																															
Red Pine	3	Log	11																																																															
Jack Pine	10	Pole	6																																																															
White Pine	5	Pole	5																																																															
Red Pine	78	Pole	6	36																																																														
Sub-Canopy Species	Density	Avg. Height	Size																																																															
White Pine	Low	Variable	Sapling																																																															
Cherry (spp.)	Low	5 - 10 feet	Sapling																																																															
Red Pine	Low	Variable	Sapling																																																															
35	42220 - Natural Jack Pine	Poletimber Well	24.5	38	51-80	N/A	Area burned during the 1986 Swanzey Lake fire...fully regenerated. Jack pine heights of ~30ft. Severe erosion from illegal ORV use.																																																											
<table border="1"> <thead> <tr> <th>Canopy Species</th> <th>% Cover</th> <th>Size Class</th> <th>DBH</th> <th>Age</th> </tr> </thead> <tbody> <tr> <td>Jack Pine</td> <td>100</td> <td>Pole/Sapling</td> <td>5</td> <td>38</td> </tr> </tbody> </table>		Canopy Species	% Cover	Size Class	DBH	Age	Jack Pine	100	Pole/Sapling	5	38																																																							
Canopy Species	% Cover	Size Class	DBH	Age																																																														
Jack Pine	100	Pole/Sapling	5	38																																																														
36	4132 - Aspen, Jack Pine	Poletimber Medium	17.7	30	141-170	N/A	Aspen with jack pine. Severe erosion in this stand from illegal ORV use.																																																											
<table border="1"> <thead> <tr> <th>Canopy Species</th> <th>% Cover</th> <th>Size Class</th> <th>DBH</th> <th>Age</th> </tr> </thead> <tbody> <tr> <td>Jack Pine</td> <td>30</td> <td>Pole</td> <td>9</td> <td>71</td> </tr> <tr> <td>Quaking Aspen</td> <td>70</td> <td>Pole</td> <td>9</td> <td>30</td> </tr> </tbody> </table>		Canopy Species	% Cover	Size Class	DBH	Age	Jack Pine	30	Pole	9	71	Quaking Aspen	70	Pole	9	30	<table border="1"> <thead> <tr> <th>Sub-Canopy Species</th> <th>Density</th> <th>Avg. Height</th> <th>Size</th> </tr> </thead> <tbody> <tr> <td>Jack Pine</td> <td>Low</td> <td>Variable</td> <td>Sapling</td> </tr> </tbody> </table>		Sub-Canopy Species	Density	Avg. Height	Size	Jack Pine	Low	Variable	Sapling																																								
Canopy Species	% Cover	Size Class	DBH	Age																																																														
Jack Pine	30	Pole	9	71																																																														
Quaking Aspen	70	Pole	9	30																																																														
Sub-Canopy Species	Density	Avg. Height	Size																																																															
Jack Pine	Low	Variable	Sapling																																																															
37	500 - Water	Nonstocked	17.6			No	Swanzey Lake																																																											



Stand	Level 4 Cover Type	Size Density	Acres	Stand Age	BA Range	Managed Site	General Comments
-------	--------------------	--------------	-------	-----------	----------	--------------	------------------

38	4123 - Red Oak	Sawtimber Well	9.8	105	111-140	N/A	Select cut as "Sporley Lake Block" #20-78A - summer, 1979 and "Engman Lake Hardwood" #010-96 (unit 1-6) - fall, 1996 - summer, 1997, summer 1998. No oak listed as harvested in either T Sale. Some hardwood TSI also completed under FTP C32-12 - October, 1979 in conjunction with t. sale contract. Rolling terrain. Heavier to oak logs with oak seedlings noted transitioning into more maple with oak component and cherry poles. Heavier fir understory in areas with higher maple canopy.		
Canopy Species	% Cover	Size Class	DBH	Age	Sub-Canopy Species	Density		Avg. Height	Size
Hemlock	1	Log/XLog	14		Hemlock	Trace		Variable	Sapling
Balsam Fir	2	Pole	6		Black Cherry	Low		10 - 20 feet	Sapling
Quaking Aspen	2	Pole/Sapling	5		Red Maple	High		Variable	Sapling
White Pine	1	XLog	28		Sugar Maple	Trace		Variable	Sapling
Paper Birch	1	Pole/Sapling	5		Sugar Maple	Low		>20 feet	Pole
Red Oak	70	XLog	19	105	Ironwood	Low		Variable	Sapling
Yellow Birch	1	Pole/Sapling	7		Yellow Birch	Trace		>20 feet	Sapling
White Spruce	1	Log	12		Red Maple	Medium		>20 feet	Pole
Red Maple	20	Log/Pole	11	45	Red Oak	Low		Variable	Sapling
Black Cherry	1	Log/Pole	10		Balsam Fir	High		Variable	Sapling
					White Pine	Medium		5 - 10 feet	Sapling

39	42220 - Natural Jack Pine	Poletimber Poor	13.2	37	51-80	N/A	Permit #2/79A - cut spring, 1979, all jack pine removed. Patchy jack pine (natural origin) likely originated from 1986 wildfire; old fire plow lines still visible. Some low quality, fire origin aspen also - heavy stem breakage. Ground cover of wintergreen, bracken fern, sweetfern noted.		
Canopy Species	% Cover	Size Class	DBH	Age	Sub-Canopy Species	Density		Avg. Height	Size
White Pine	1	Sapling	2	37					
Red Pine	5	Sapling	2						
Paper Birch	1	Sapling	3	37					
Quaking Aspen	2	Sapling/Pole	4	37					
Red Oak	10	Sapling	3	37					
Jack Pine	71	Pole	6	37					
Red Maple	10	Sapling	3	37					

40	4113 - R.Maple, Conifer	Poletimber Medium	15.4	94	81-110	N/A	The north half of stand contains Little Lake State Forest Campground and boat access site. This stand is part of a concentrated recreational area SCA. Trace amount of jack and red pine, mainly within campground area. Ground cover of lily, club moss, starflower noted.		
Canopy Species	% Cover	Size Class	DBH	Age	Sub-Canopy Species	Density		Avg. Height	Size
White Spruce	4	Log	12		Black Spruce	Low		Variable	Sapling
Balsam Fir	4	Pole/Sapling	6		Balsam Fir	High		Variable	Sapling
White Pine	8	XLog	26		White Pine	Low		5 - 10 feet	Sapling
Black Spruce	2	Pole	6		White Spruce	Low		Variable	Sapling
Northern White Cedar	3	Pole/Log	8						
Paper Birch	5	Log/Pole	10	94					
Black Cherry	5	Pole/Log	8						
Quaking Aspen	4	Pole/Log	9	94					
Red Maple	62	Pole/Log	8	94					
Hemlock	3	Log/Pole	10						