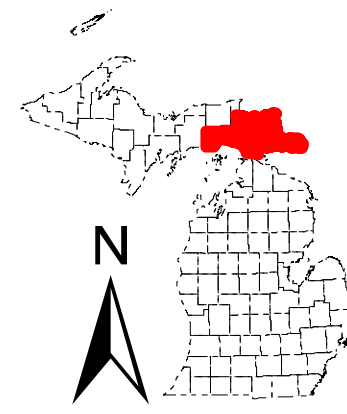


Sault Ste. Marie Management Unit (East) State Forest Compartments by Year of Entry

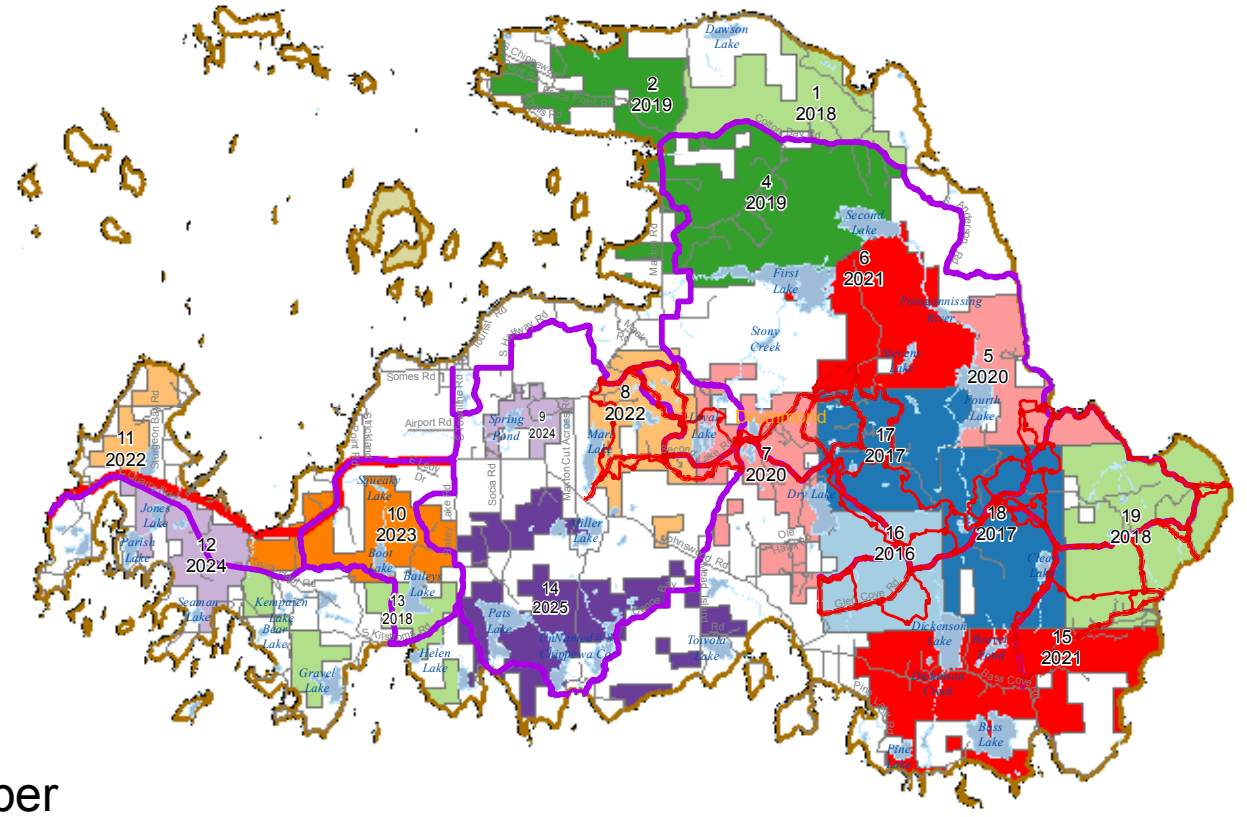
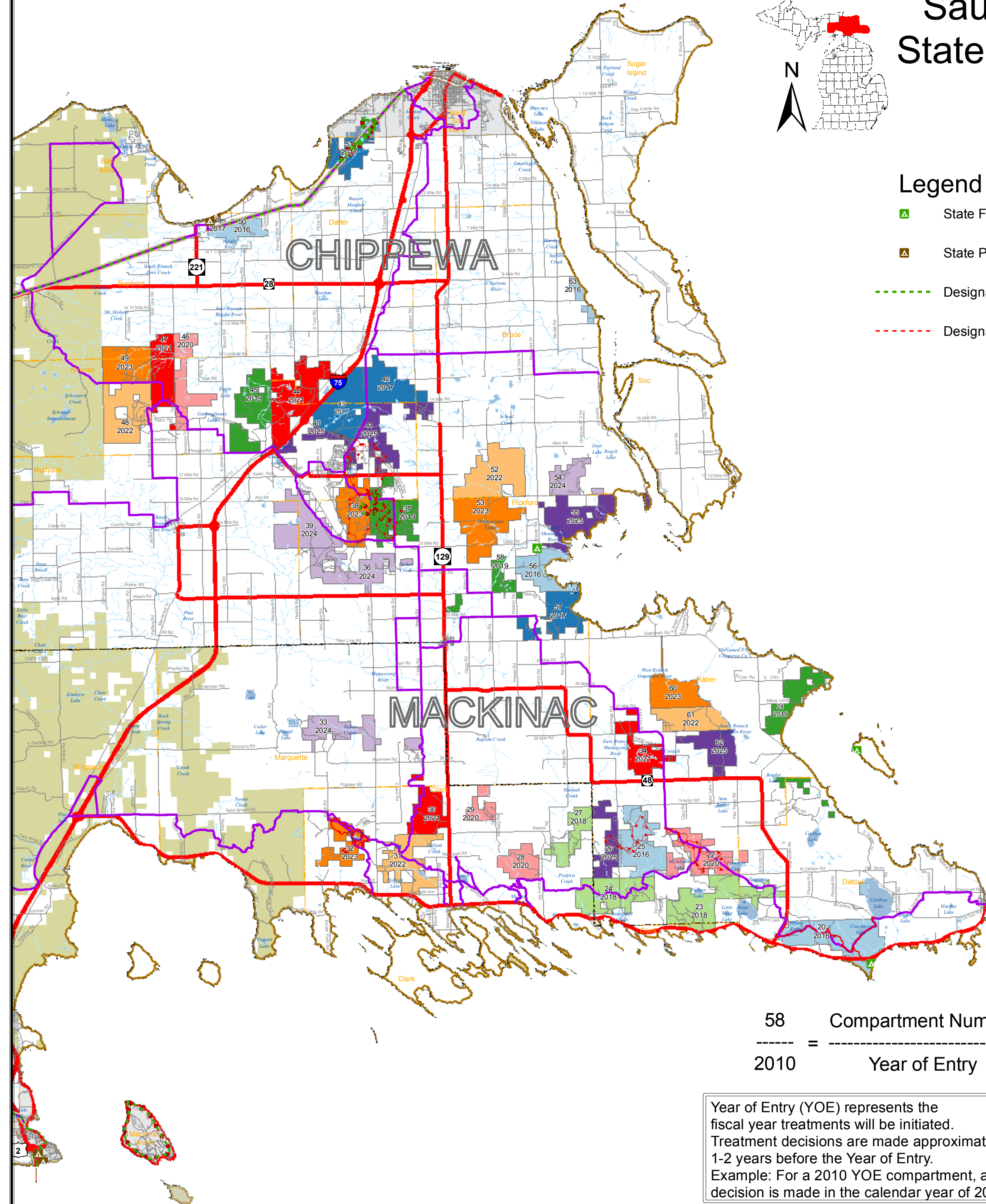


YOE



Legend

- State Forest Campground
- State Park Campgrounds
- Designated Hiking Trails
- Designated Bicycle Trails
- Designated Equestrian Trails
- Designated Ski Trails
- ORV License & Trail Permit
- Designated ATV Trails
- Designated ORV Routes
- Designated Snowmobile Trails
- Designated Railtrail
- Highway
- Roads
- Streams
- Townships
- Cities
- Counties
- Lakes and Rivers
- USFS Huron-Manistee Ownership

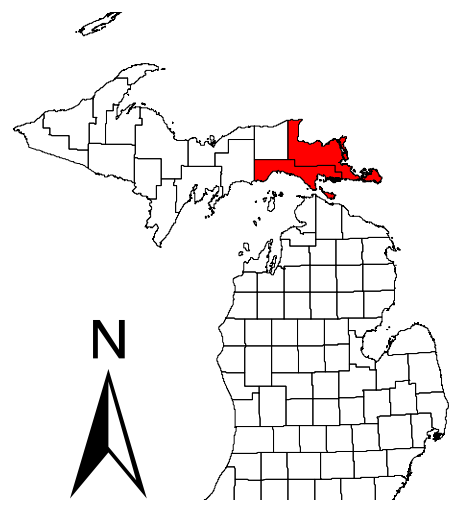


58 = 2010
 Compartment Number Year of Entry

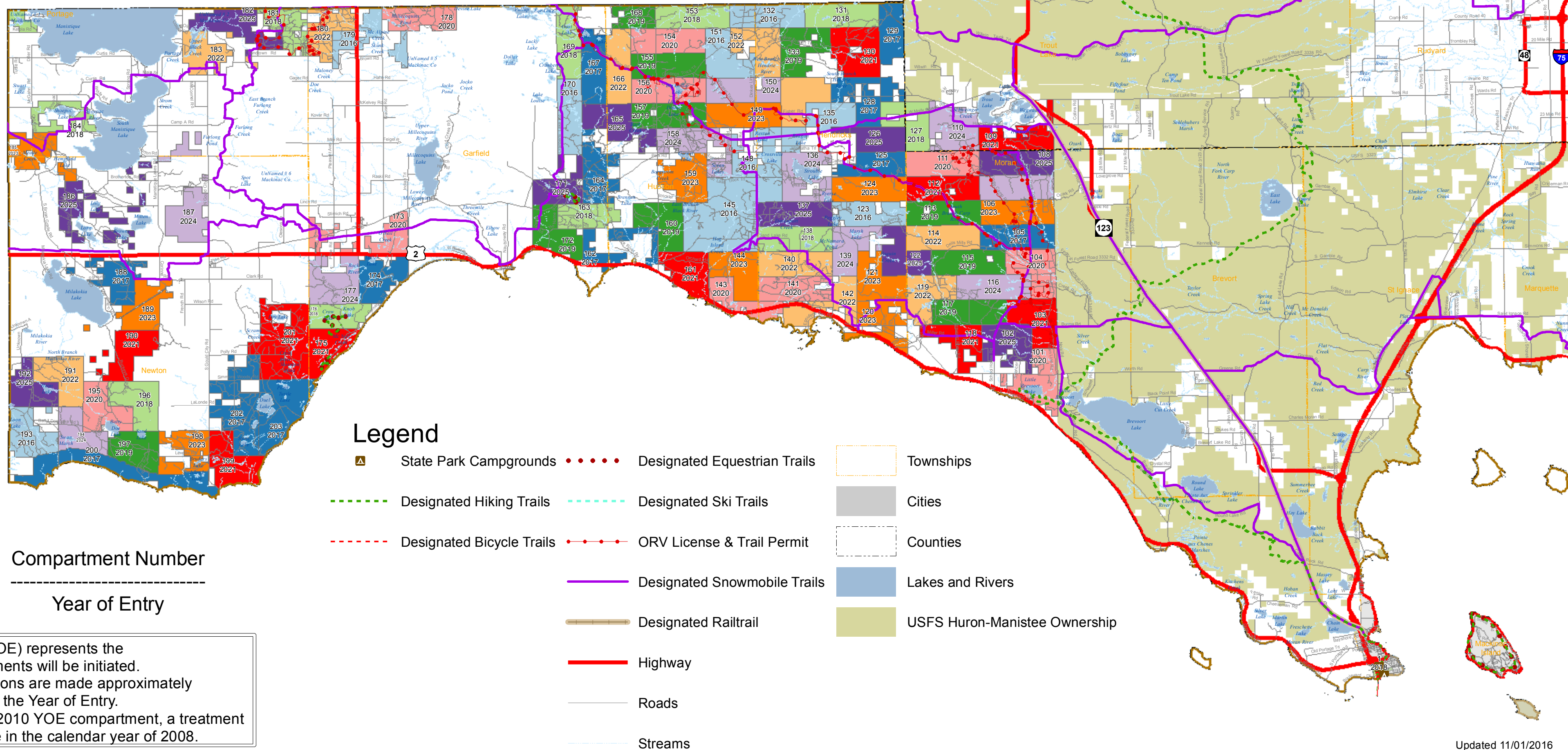
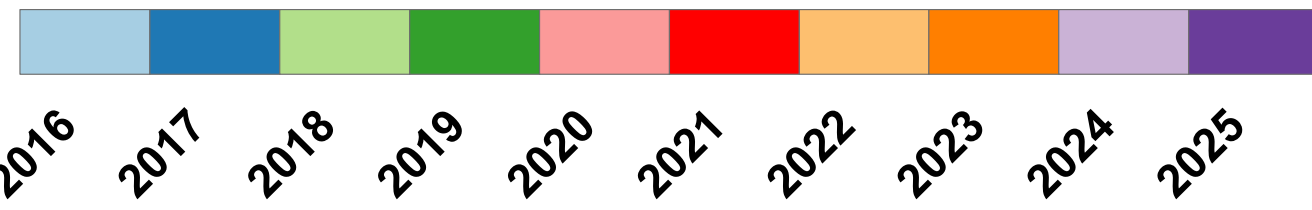
Year of Entry (YOE) represents the fiscal year treatments will be initiated. Treatment decisions are made approximately 1-2 years before the Year of Entry. Example: For a 2010 YOE compartment, a treatment decision is made in the calendar year of 2008.



Sault Ste. Marie Management Unit (West) State Forest Compartments by Year of Entry



YOE



Legend

- State Park Campgrounds
- Designated Equestrian Trails
- Designated Hiking Trails
- Designated Ski Trails
- Designated Bicycle Trails
- ORV License & Trail Permit
- Designated Snowmobile Trails
- Designated Railtrail
- Highway
- Roads
- Streams
- Townships
- Cities
- Counties
- Lakes and Rivers
- USFS Huron-Manistee Ownership

58 **Compartment Number**

2010 **Year of Entry**

Year of Entry (YOE) represents the fiscal year treatments will be initiated. Treatment decisions are made approximately 1-2 years before the Year of Entry. Example: For a 2010 YOE compartment, a treatment decision is made in the calendar year of 2008.