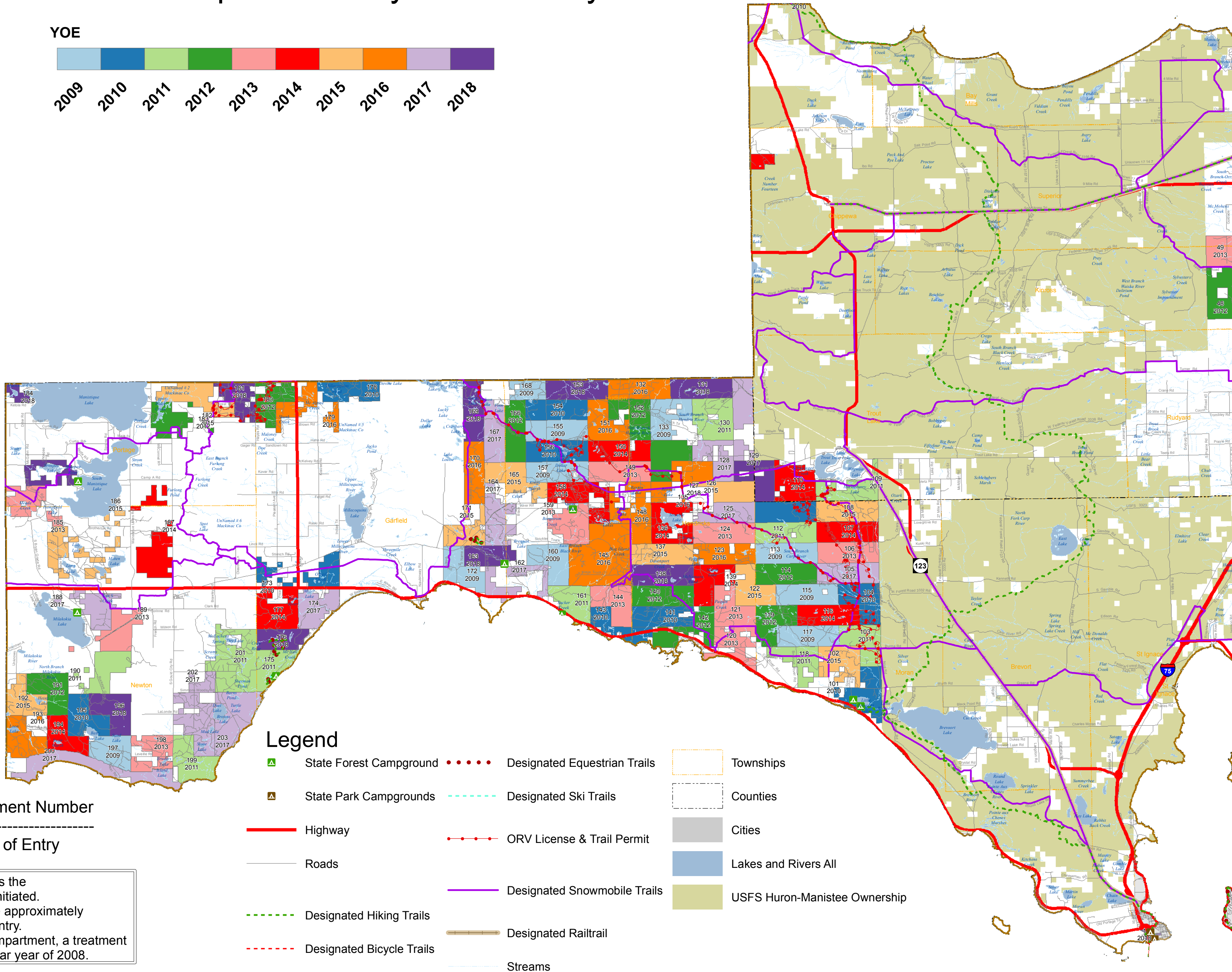
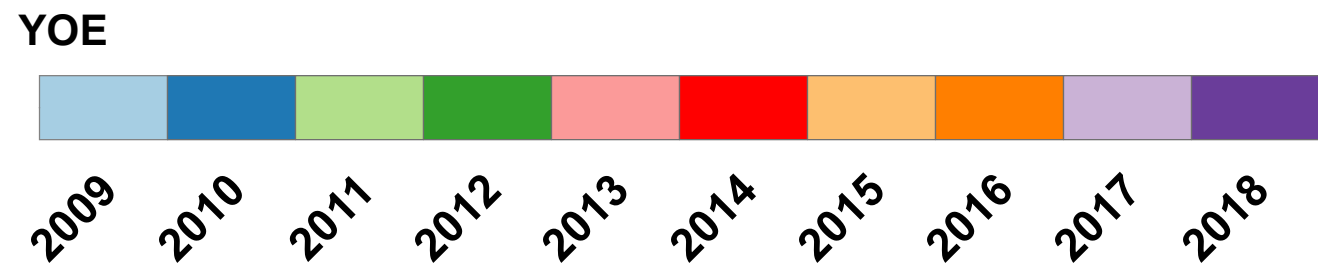


Sault Ste. Marie Management Unit (West) State Forest Compartments by Year of Entry



58 **Compartment Number**

2010 **Year of Entry**

Legend

- State Forest Campground
- State Park Campgrounds
- Highway
- Roads
- Designated Hiking Trails
- Designated Bicycle Trails
- Designated Equestrian Trails
- Designated Ski Trails
- ORV License & Trail Permit
- Designated Snowmobile Trails
- Designated Railtrail
- Townships
- Counties
- Cities
- Lakes and Rivers All
- USFS Huron-Manistee Ownership

Year of Entry (YOE) represents the fiscal year treatments will be initiated. Treatment decisions are made approximately 1-2 years before the Year of Entry. Example: For a 2010 YOE compartment, a treatment decision is made in the calendar year of 2008.