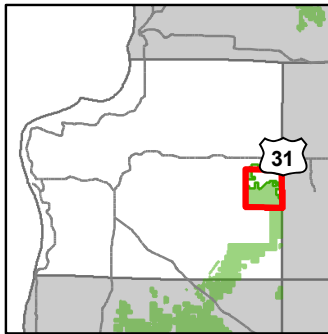
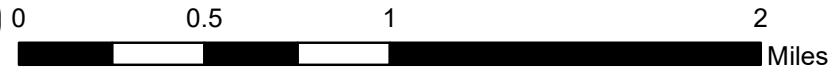
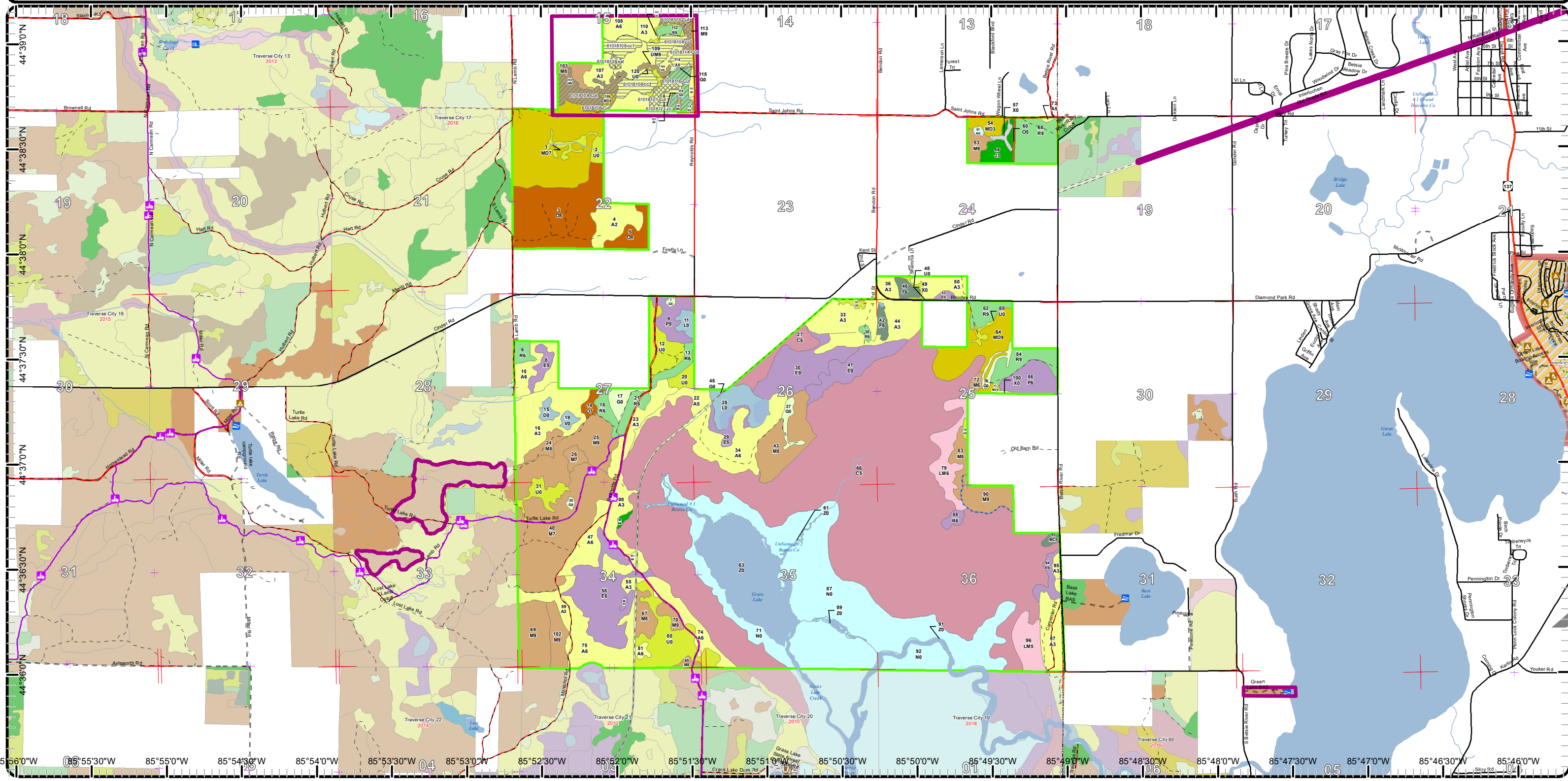


Cover Type & Treatments Map

Compartment: 18
 T26N R13W 22,24-27,34-36
 County: Benzie
 Unit: Traverse City
 Mgmt Area: Manistee Plains
 YOE: 2017
 Acres: 3837 GIS Calculated
 Examiner: Craig Allen
 Map Revised: 6/27/2017
 Map Phase: Pre-Review



- Treatment Area
- + Miris Corners
- + Remonumented Section Corners
- Counties
- Snowmobile Trails
- Designated Snowmobile Trails
- County Paved Roads
- Paved Roads
- County Gravel Roads
- Gravel Roads
- County Poor Dirt Roads
- Poor Dirt Roads
- Streams
- Lakes and Rivers All
- Compartment Boundary
- Treatments with Site Conditions
- Selection (Group, Single Tree)
- Clearcut (w/Reserves)
- Thinning (Crown, Low, Systematic)
- 411 - Northern Hardwood
- 412 - Oak Types
- 413 - Aspen Types
- 419 - Mixed Upland Deciduous
- 421 - Planted Pines
- 422 - Natural Pines
- 423 - Other Upland Conifers
- 430 - Upland Mixed Forest
- 611 - Lowland Deciduous Forest
- 612 - Lowland Coniferous Forest
- 613 - Lowland Mixed Forest
- 110 - Low Intensity Urban
- 122 - Roads/Parking Lot
- 310 - Herbaceous Openland
- 330 - Low Density Trees
- 500 - Water
- 622 - Lowland Shrub
- 623 - Emergent Wetland
- 790 - Other Bare/Sparsely Vegetated
- Lakes



85°56'0"W 85°55'30"W 85°55'0"W 85°54'30"W 85°54'0"W 85°53'30"W 85°53'0"W 85°52'30"W 85°52'0"W 85°51'30"W 85°51'0"W 85°50'30"W 85°50'0"W 85°49'30"W 85°49'0"W 85°48'30"W 85°48'0"W 85°47'30"W 85°47'0"W 85°46'30"W 85°46'0"W