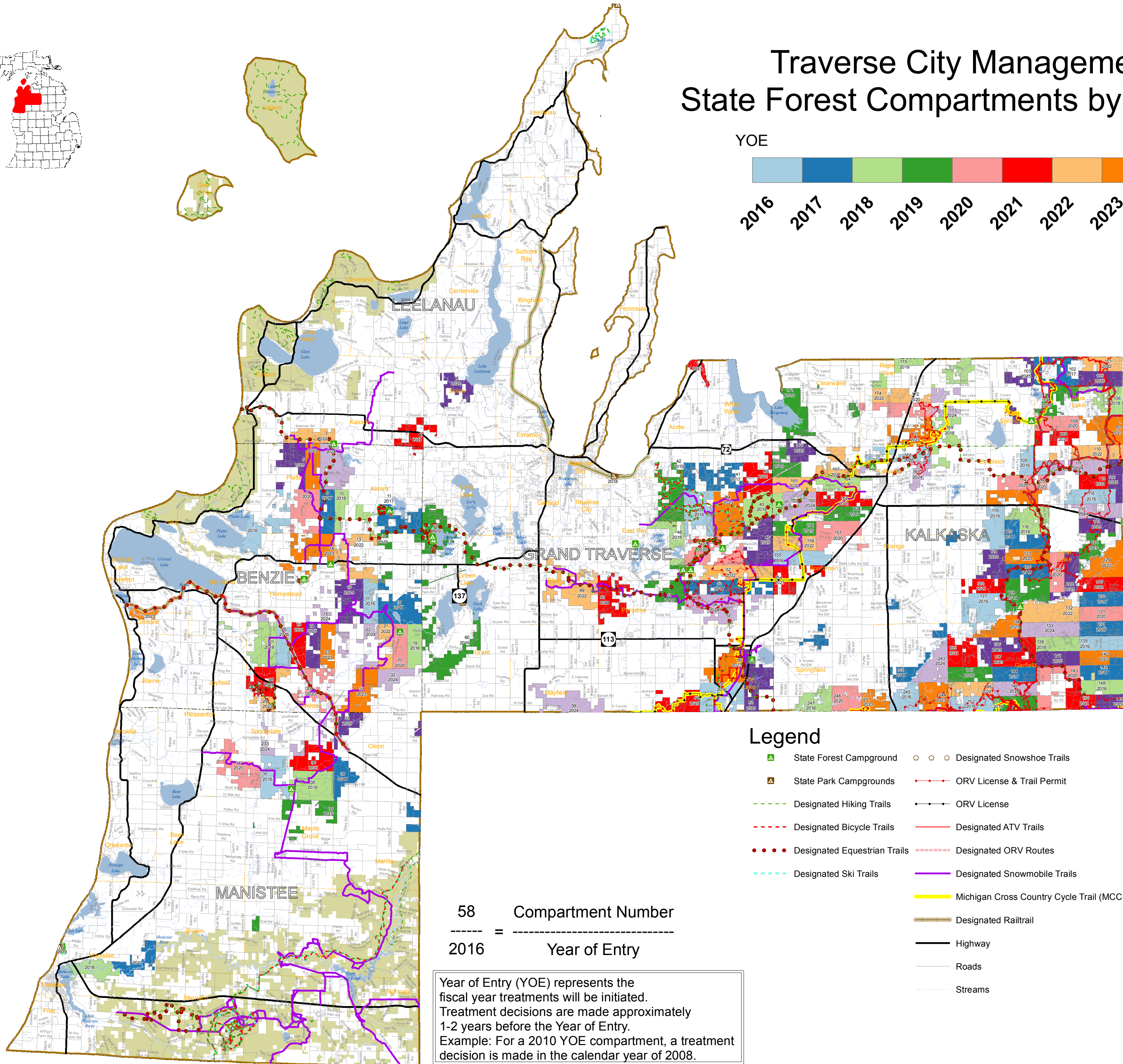
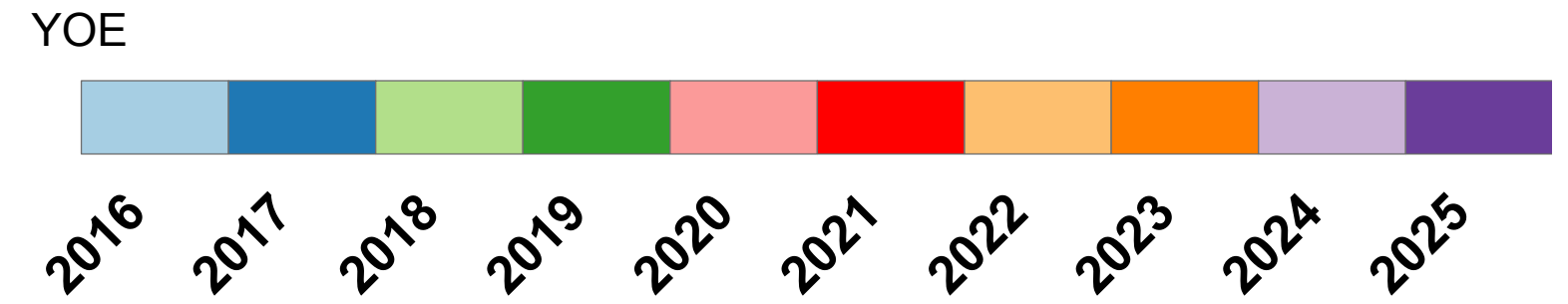


# Traverse City Management Unit State Forest Compartments by Year of Entry



58      **Compartment Number**  
-----  
2016      **Year of Entry**

Year of Entry (YOE) represents the fiscal year treatments will be initiated. Treatment decisions are made approximately 1-2 years before the Year of Entry. Example: For a 2010 YOE compartment, a treatment decision is made in the calendar year of 2008.

## Legend

- State Forest Campground
- State Park Campgrounds
- Designated Hiking Trails
- Designated Bicycle Trails
- Designated Equestrian Trails
- Designated Ski Trails
- Designated Snowshoe Trails
- ORV License & Trail Permit
- ORV License
- Designated ATV Trails
- Designated ORV Routes
- Designated Snowmobile Trails
- Michigan Cross Country Cycle Trail (MCCCT)
- Designated Railtrail
- Highway
- Roads
- Streams
- Townships
- Counties
- Lakes and Rivers
- USFS Ottawa Ownership

