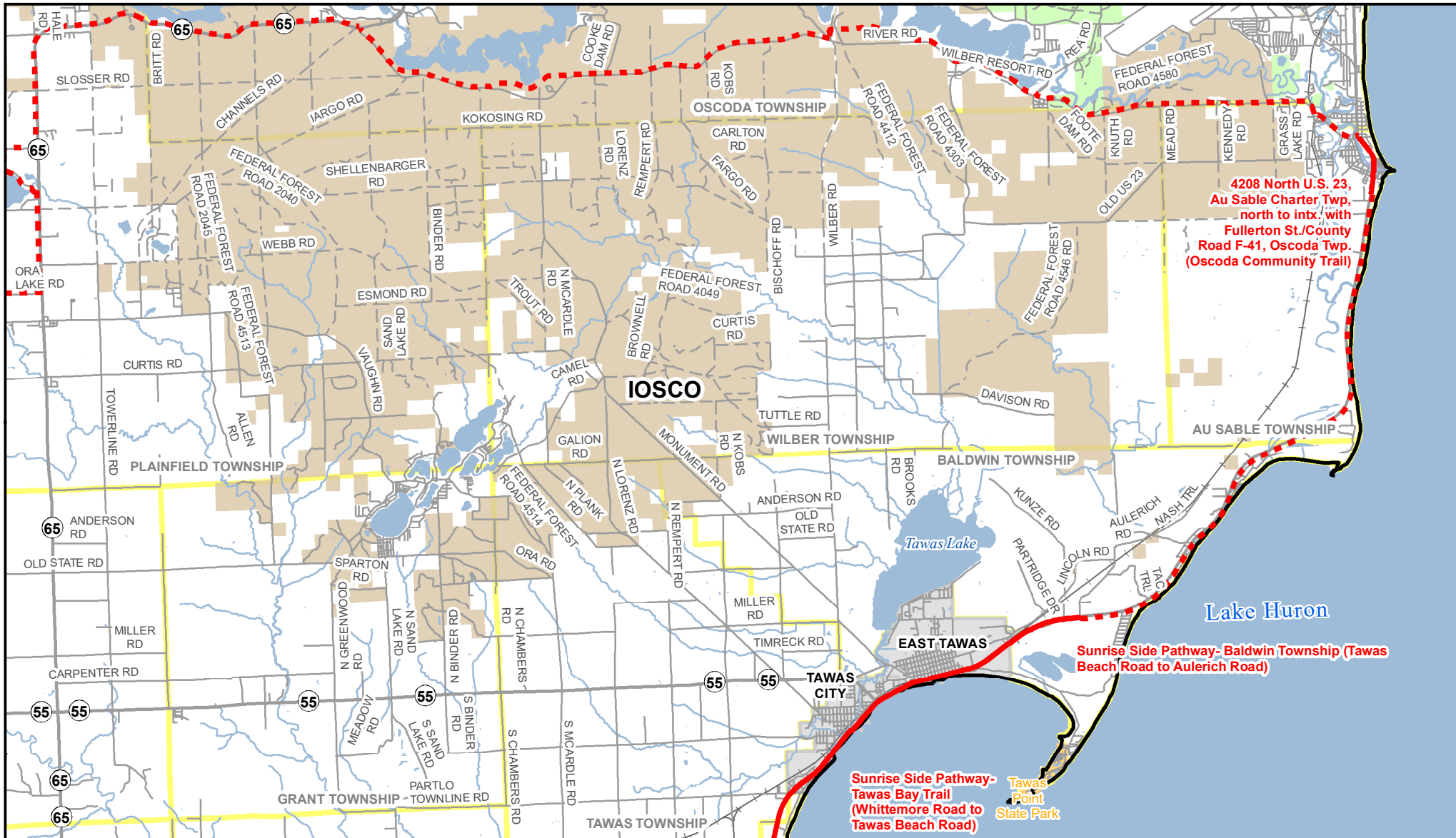


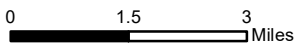


Michigan's Iron Belle Trail - Two Routes, One Great Trail

Sunrise Side Pathway on US-23 - Oscoda Community Trail - Iosco County River Pathway



** The illustrated hike and bicycle trail connections will rely upon partnership opportunities. **



December 2019
Michigan Department of Natural Resources
Forest Resources Division
Resource Assessment Section

- | | | |
|-------------------------------|-------------------------|-------------------|
| Iron Belle Trail | --- Gravel or Dirt Road | ■ City or Village |
| — Biking - Existing Trail | — River | ■ Township |
| - - - Biking - Proposed Trail | ■ Lake | ■ County |
| + Railroad | ■ Land Ownership | |
| — Highway | ■ State Land | |
| — Paved Road | ■ Federal Land | |

