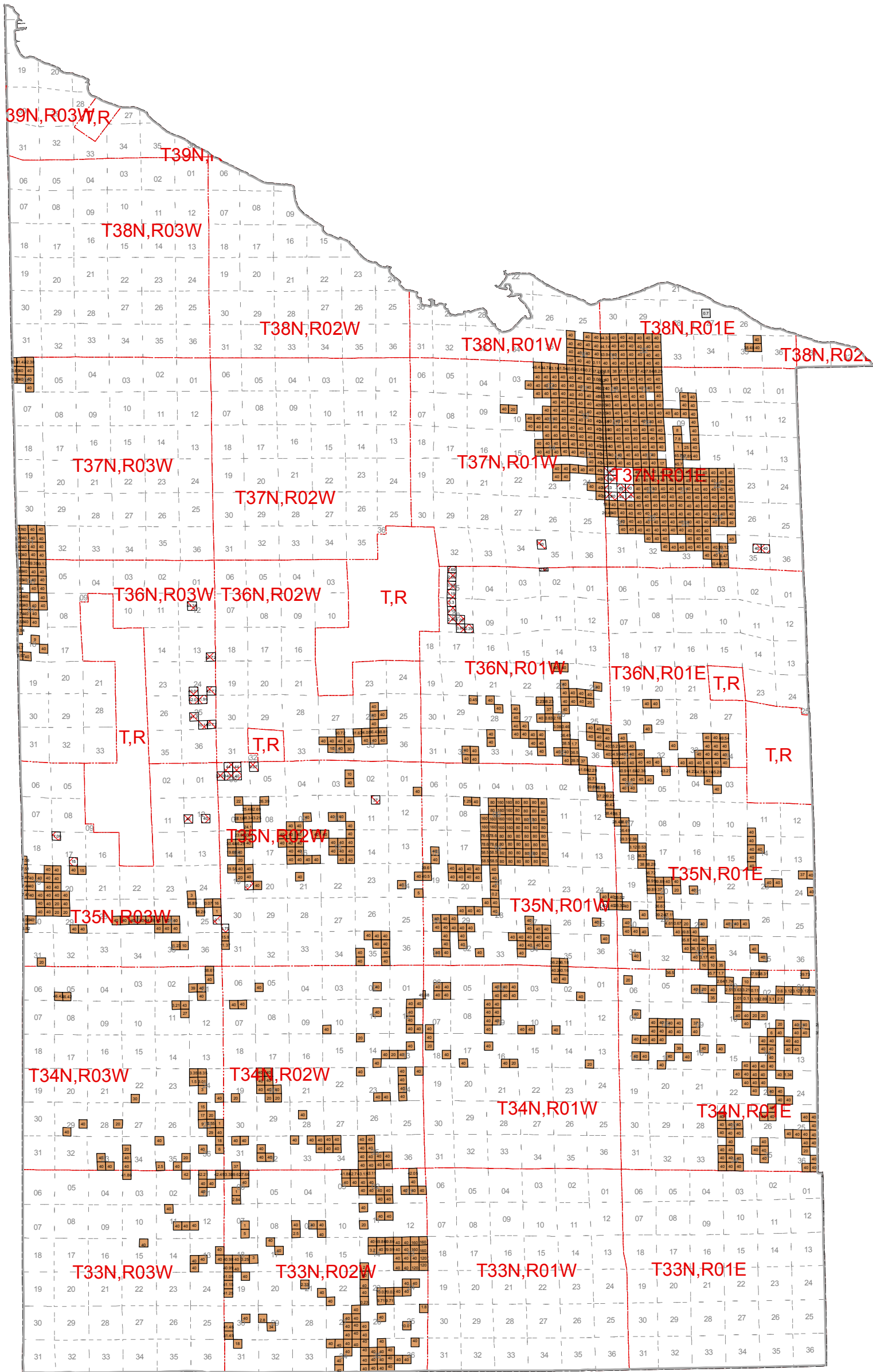


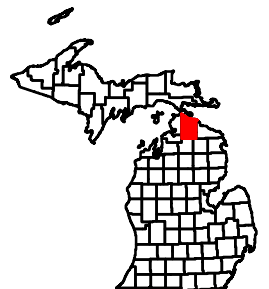


October 2010 Mineral Lease Auction Cheboygan County



Legend

- | | | |
|---|------------------------------------|---|
| Atlas Gas & Oil Company, LLC | Harvey M. Langworthy | Presidium Antrim West, LC |
| Bayside Energy LLC | Jordan Development Company, L.L.C. | Ranch Production, L.L.C. |
| Borders Exploration L.L.C. | Kosco Energy Group, LLC | SRW, Inc. |
| BreitBurn Operating Limited Partnership | Larks Properties, LLC | Savoy Energy, L.P. |
| Coughlin Land Services, LLC | Meridian Energy Corporation | Strickler Resources Limited Partnership |
| Crystal Lake Resources L.L.C. | Monitor Energy Partners, L.P. | Trendwell Energy Corporation |
| DTE Gas Storage Company | Muskegon Development Company | Western Land Services, Inc. |
| Dennis R. Schumde, d/b/a | New Horizon Energy Company L.L.C. | Whiting Oil and Gas Corporation |
| Encana Oil & Gas (USA) Inc. | Northcentral Exploration, LLC | Counties |



= Lease Acres

Note: Some Leased blocks may contain more than one lessee. See Spreadsheet for more detailed information.