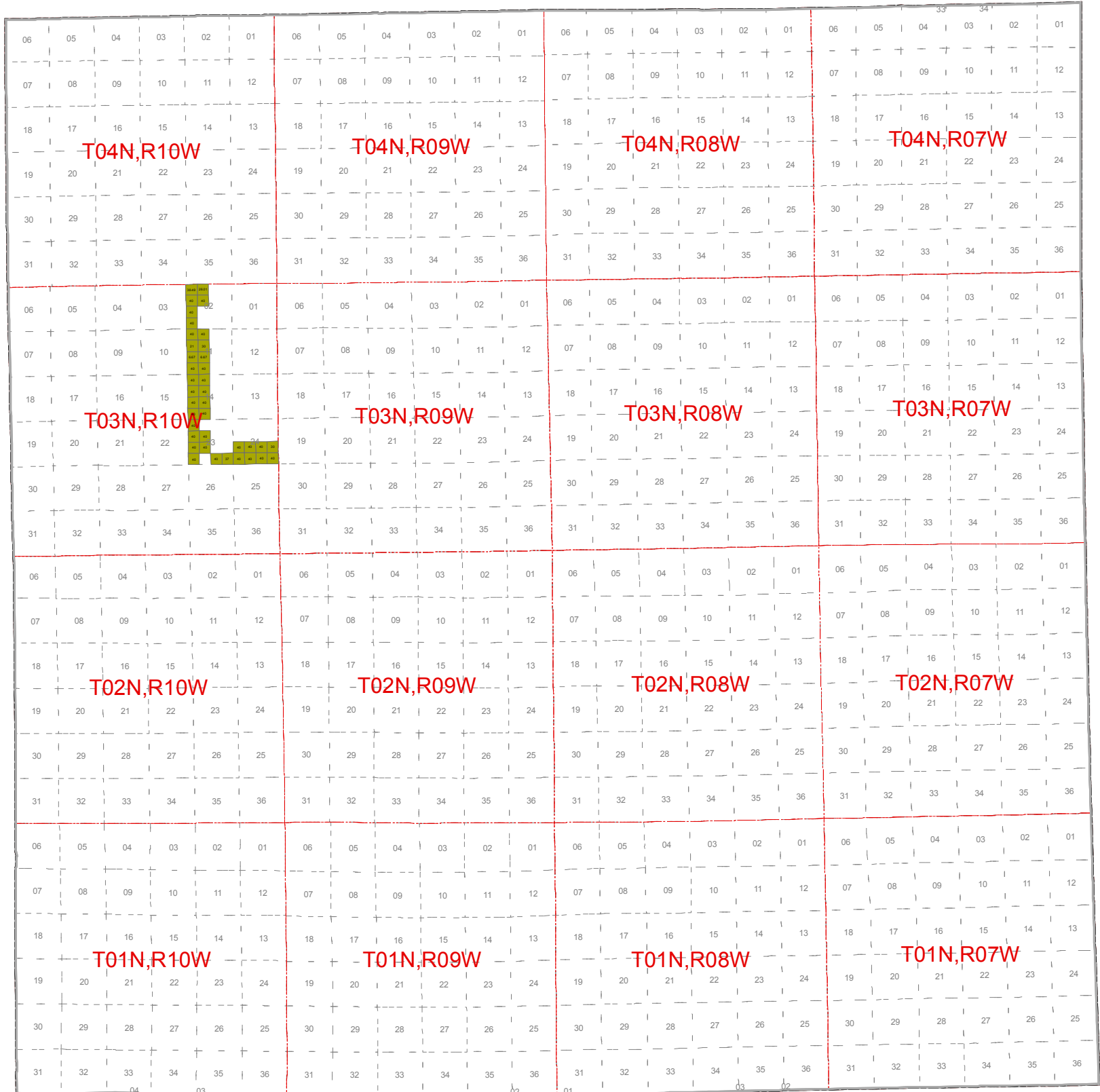


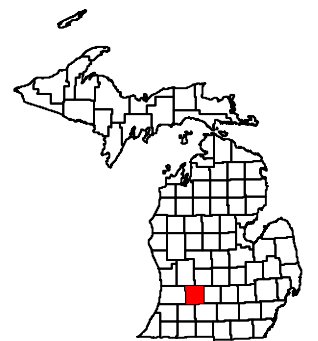


October 2012 Mineral Lease Auction Barry County



Legend

- | | |
|--|---|
| Audubon Oil & Gas, LLC | O.I.L. Energy Corp. |
| Encana Oil & Gas (USA) Inc. | Pteradon Energy, LLC |
| JL Leasing Ventures, LLC | Stephen H. Anderson |
| Jordan Development Company, L.L.C. | Strickler Resources Limited Partnership |
| Maritz Land Company LLC | TERRACORE LLC |
| Meridian Energy Corporation | Trendwell Energy Corporation |
| Michigan Exploration Partners, Limited Partnership | West Bay Exploration Company |
| New Horizon Energy Company L.L.C. | Western Land Services, Inc. |



Date: 12/19/2012 35 = Lease Acres

Note: Some Leased blocks may contain more than one lessee. See Spreadsheet for more detailed information.