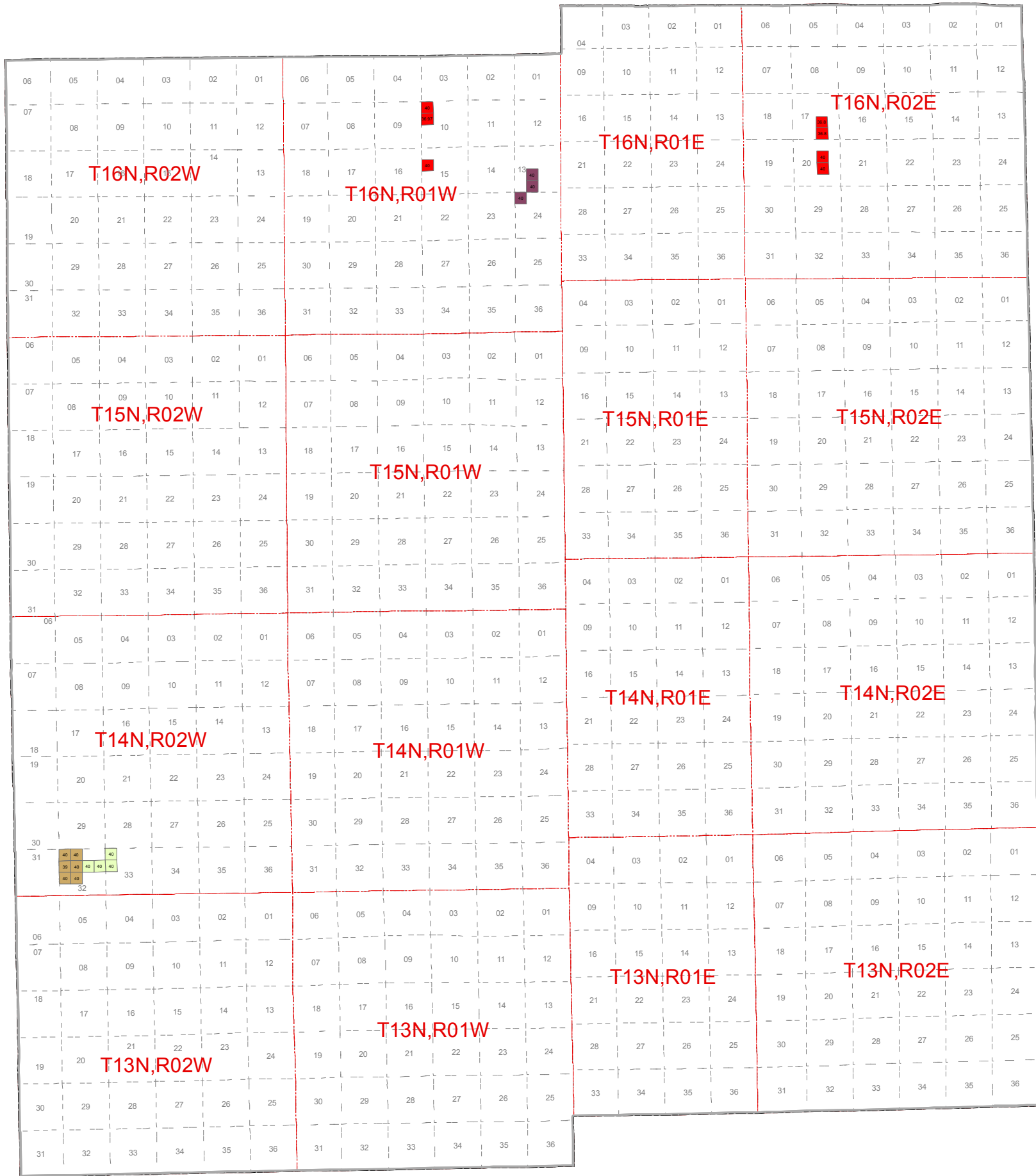


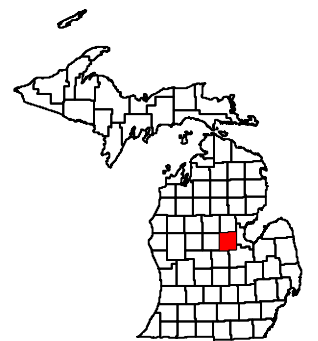


May 2013 Mineral Lease Auction Midland County



Legend

- | | |
|------------------------------------|-----------------------------|
| Audubon Oil & Gas, LLC | MAR/TEC INCORPORATED |
| CORE Energy, LLC | Maritz Land Company LLC |
| Clayton Energy Company | Meridian Energy Corporation |
| Coleman Oil and Gas, Inc. | O.I.L. Energy Corp. |
| EXOK, INC. | Petro-Vest, Inc. |
| Encana Oil & Gas (USA) Inc. | Petrogulf Corporation |
| Innova Exploration, Inc. | Savoy Energy, L.P. |
| Jordan Development Company, L.L.C. | Stephen H. Anderson |
| Kosco Energy Group, LLC | TERRACORE LLC |



Date: 07/24/2013 = Lease Acres

Note: Some Leased blocks may contain more than one lessee. See Spreadsheet for more detailed information.