

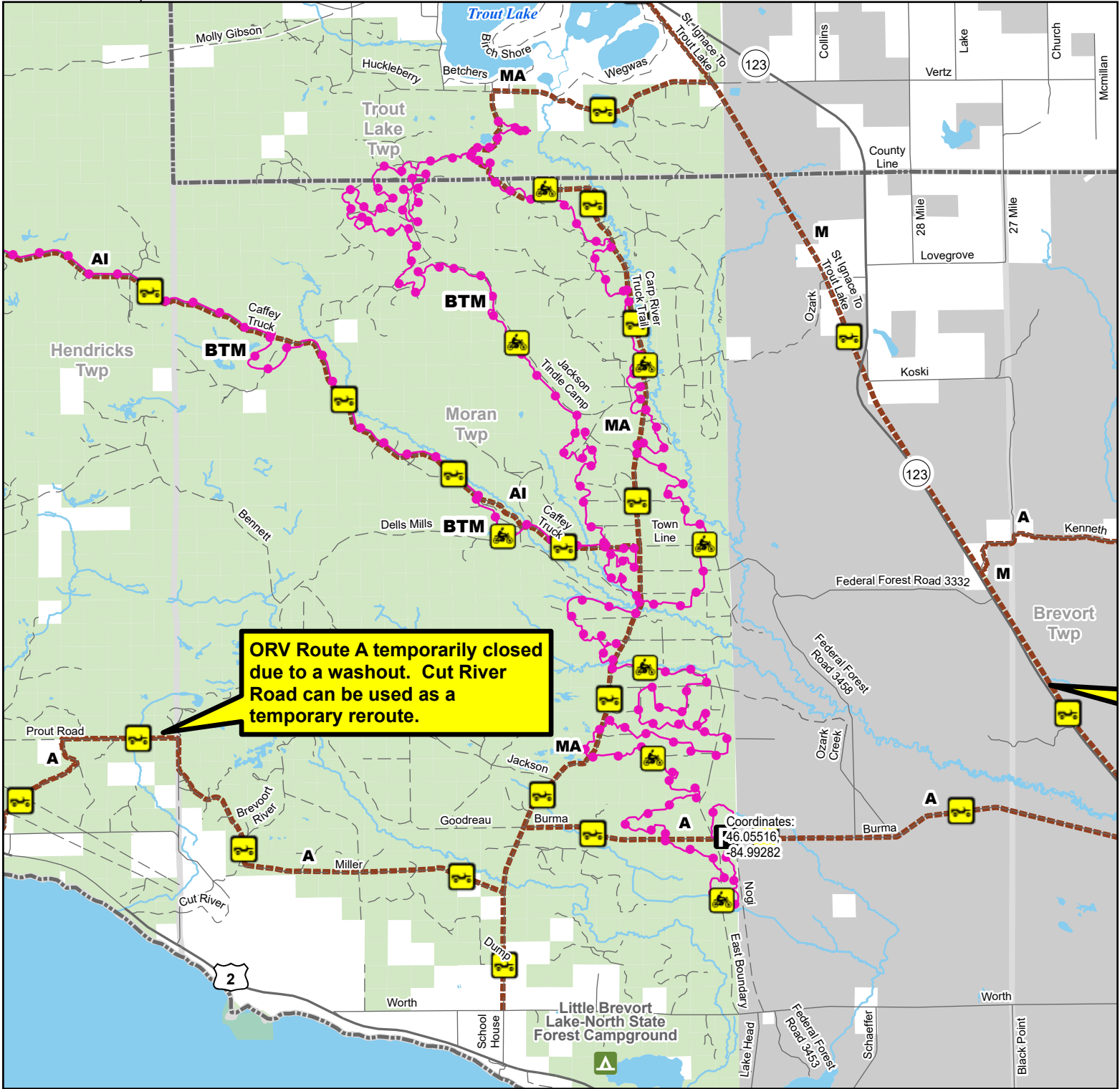


MA Route -- Trout Lake & Moran Townships

Mackinac & Chippewa Counties, Michigan

Description: 15 Miles

Advisory: Trails and routes have two-way traffic.
Disclaimer: Trails shown on this map are an approximate representation of the trail system at the time of publication and may not reflect current ground conditions. Stay on signed trails only!



ORV Route A temporarily closed due to a washout. Cut River Road can be used as a temporary reroute.

Coordinates:
46.05516,
-84.99282

- Parking Lot
- Motorcycle (DNR License)
- ORV Route
- Motorcycle Trail – Motorcycles Only. ORV license and trail permit required.
- ORV Route – ORVs of all sizes including off-road motorcycles. ORV license and trail permit required unless licensed by the Secretary of State.
- Highway
- Paved road
- Lake and River
- State Forest Land
- Township
- County

