

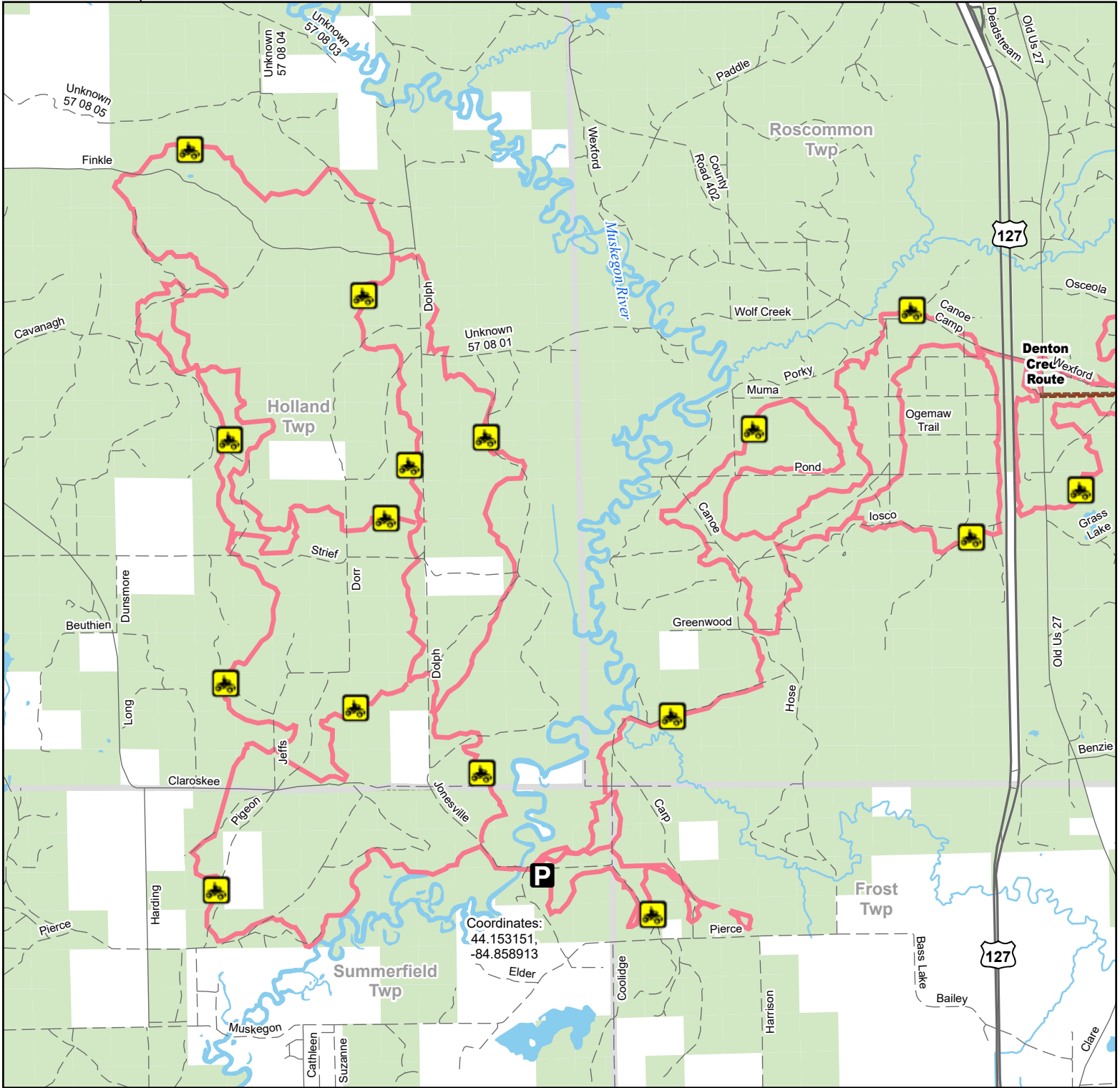


# Leota Trail

Missaukee, Roscommon & Clare Counties, Michigan

Advisory: Trails and routes have two-way traffic.  
Disclaimer: Trails shown on this map are an approximate representation of the trail system at the time of publication and may not reflect current ground conditions. Stay on signed trails only!

Description:



Coordinates:  
44.153151,  
-84.858913

- P** Parking Lot
- ORV Trail

ORV Route – ORVs of all sizes including off-road motorcycles. ORV license and trail permit required unless licensed by the Secretary of State.

- ORV Trail – ORVs 50 inches in width or less including off-road motorcycles. ORV license and trail permit required.
- Highway
- Paved road
- Gravel or dirt road
- Lake and River
- State Forest Land
- Township

Updated: 03/27/2024

