

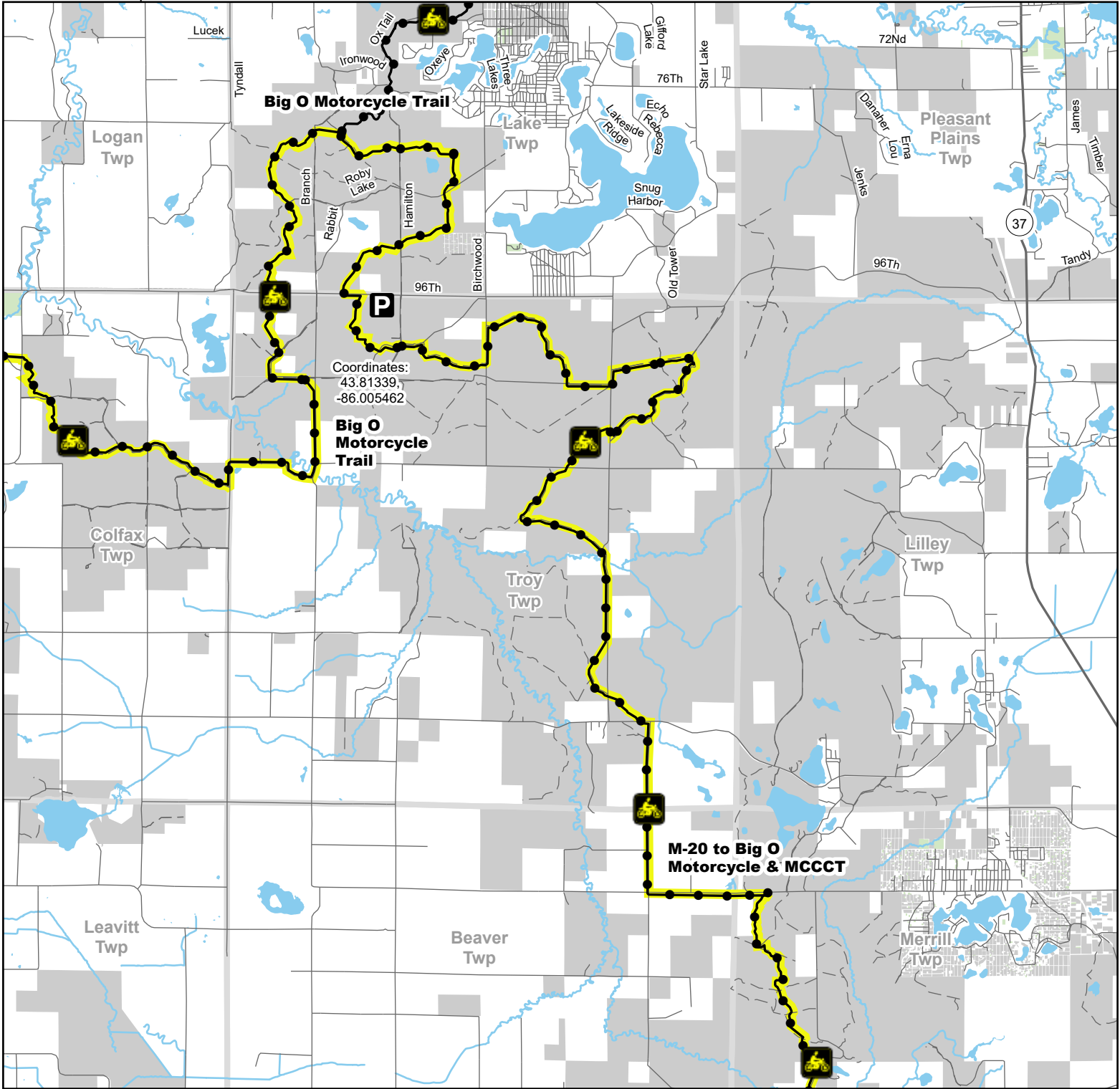


M-20 to Big O Motorcycle MCCCT North

Lake & Newaygo Counties, Michigan

Description: 28 Miles

Advisory: Trails and routes have two-way traffic.
 Disclaimer: Trails shown on this map are an approximate representation of the trail system at the time of publication and may not reflect current ground conditions. Stay on signed trails only!



- Parking Lot
- Motorcycle (SOS License)
- Motorcycle Trail - Secretary of State license required.
- Michigan Cross Country Cycle Trail (MCCCT)
- Highway
- Paved road
- Gravel or dirt road
- Lake and River
- State Forest Land
- Township



Updated: 03/27/2024

