

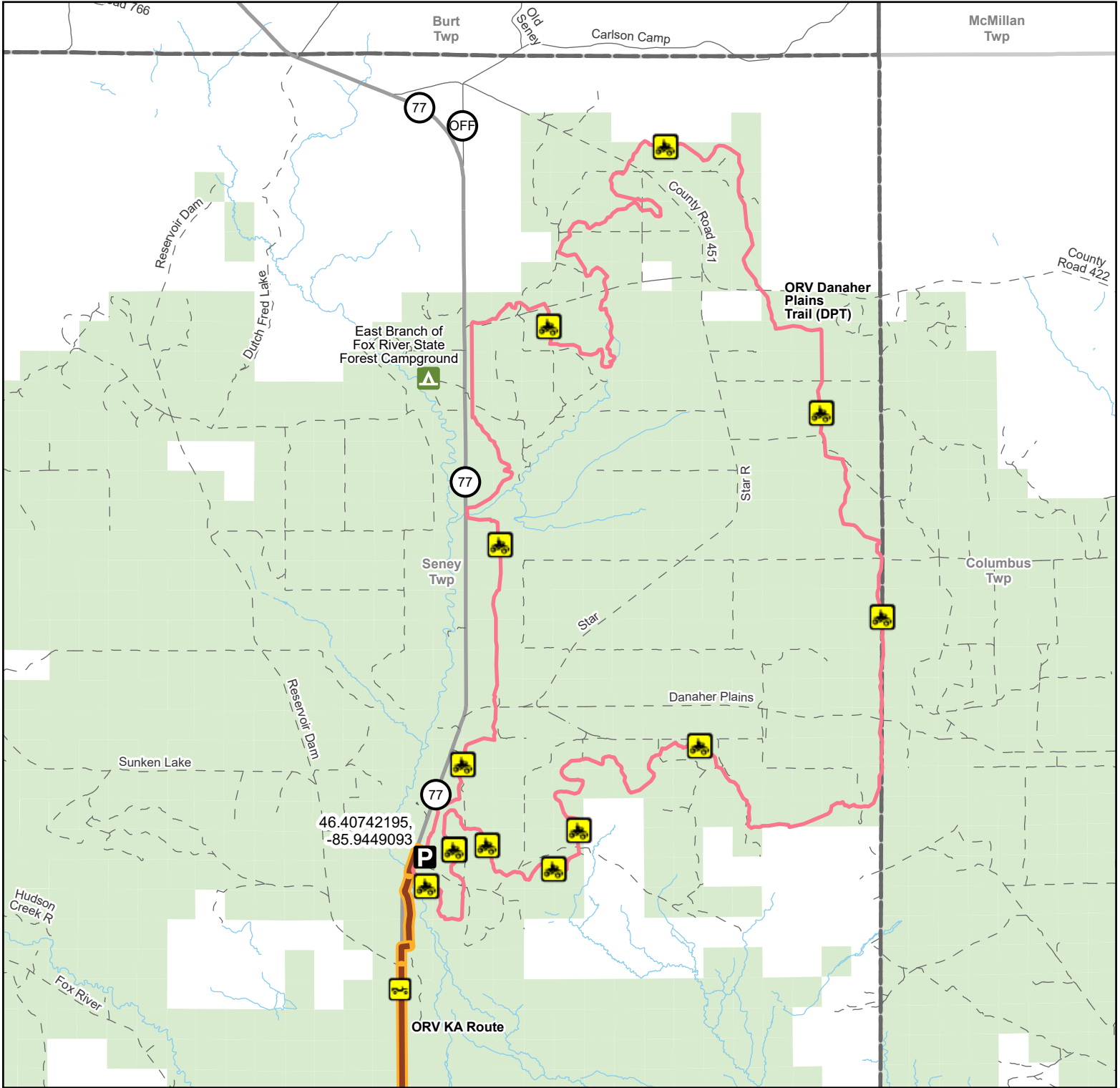


ORV Danaher Plains Trail (DPT)

Schoolcraft County, Michigan

Description: 27 Miles

Advisory: Trails and Routes have two-way traffic.
Disclaimer: Trails shown on this map are an approximate representation of the trail system at the time of publication and may not reflect current ground conditions. Stay on signed trails only!



- Parking Lot
- State forest campground
- ORV Route
- ORV Trail

- ATV Trail (50 Inch) ORVs 50 inches in width or less including off-road motorcycles. ORV license and trail permit required.
- ORV Route (72 Inch) MDOT ROW - Seasonal Connector, Open May 1 to November 30
- Highway

- Paved Road
- Gravel or Dirt Road
- DNR-managed land
- Civil Township
- County

