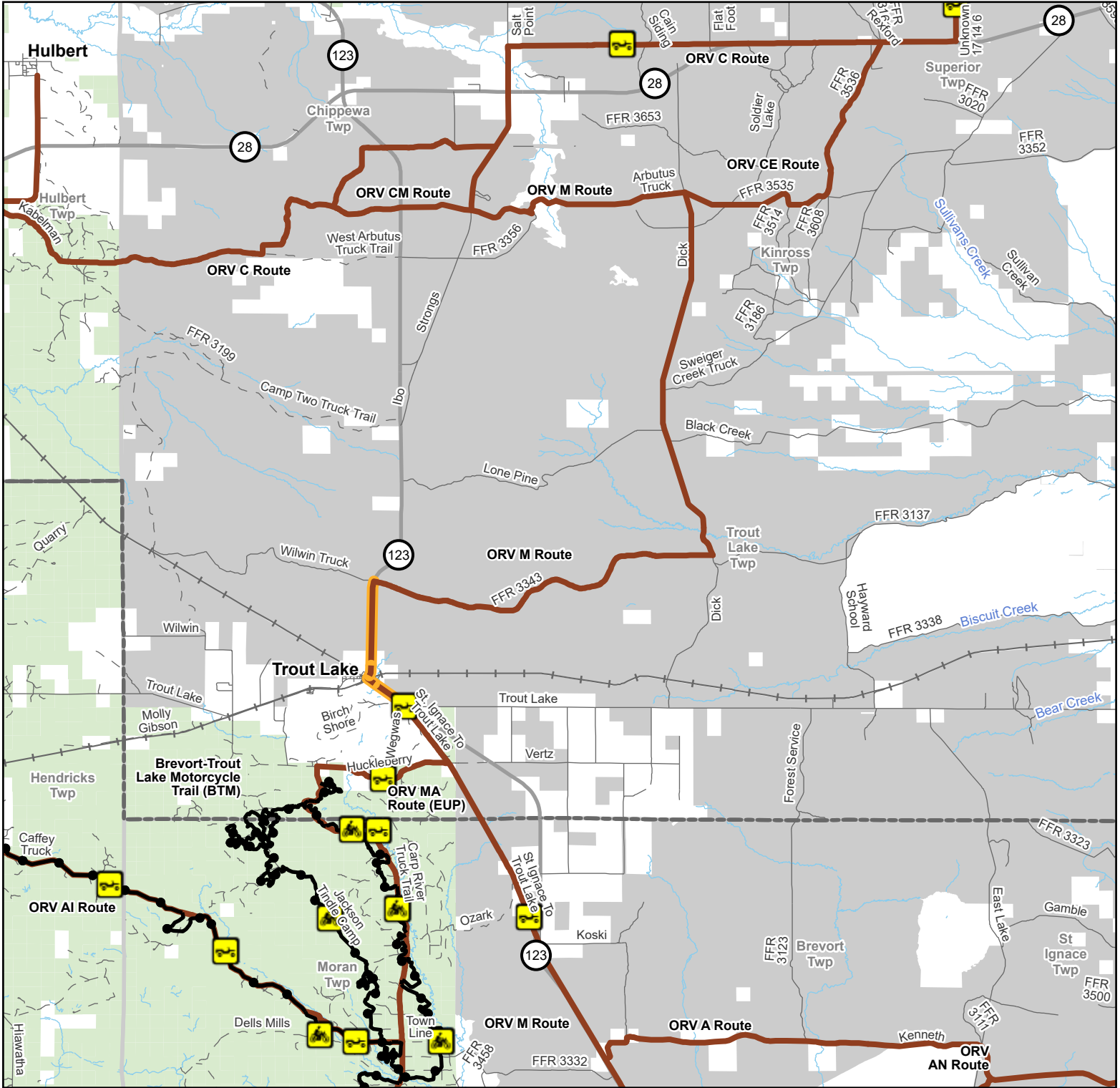




ORV M Route North

Trout Lake, Moran & Brevort Townships, Mackinac & Chippewa Counties, Michigan

Advisory: Trails and Routes have two-way traffic.
Disclaimer: Trails shown on this map are an approximate representation of the trail system at the time of publication and may not reflect current ground conditions. Stay on signed trails only!



- Motorcycle
- ORV Route
- DNR Motorcycle Trails 24 Inch Maximum Width

- ORV Route (72 Inch) ORVs of all sizes including off-road motorcycles. ORV license and trail permit required unless licensed by the Secretary of State.
- ORV Route (72 Inch) MDOT ROW - Seasonal Connector, Open May 1 to November 30
- Highway

- Paved Road
- Gravel or Dirt Road
- Railroad
- DNR-managed land
- Federally-managed land
- Civil Township
- County

Description: 28 Miles

Updated: 04/16/2026
If you need assistance with this map, please email DNR-Trails@michigan.gov.

0 0.5 1 Miles

