



# CANNON CREEK FLOODING No.1 and No.2 STATE WILDLIFE MANAGEMENT AREA



- General Map -  
**Missaukee County**

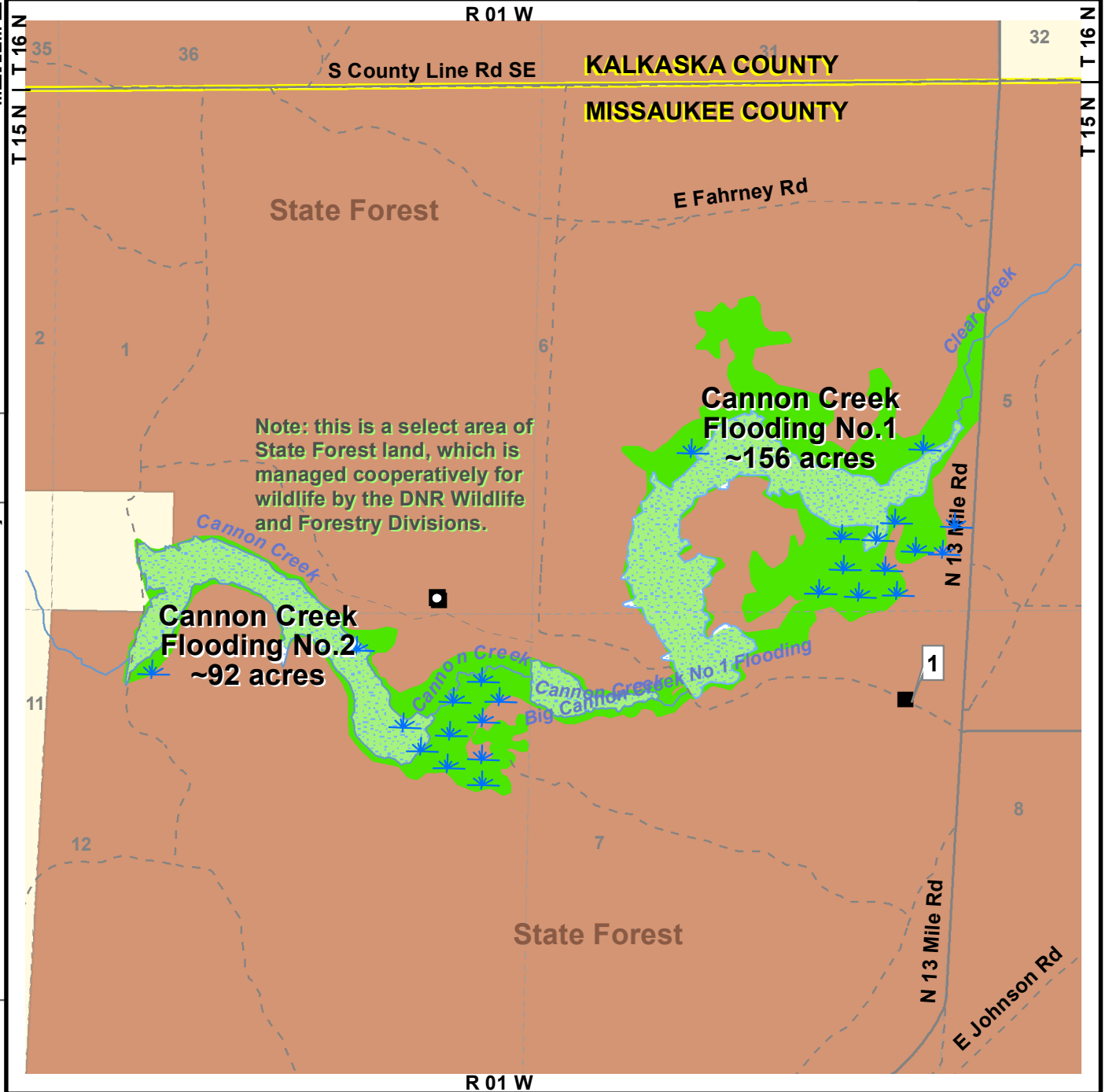
Area headquarters: Wildlife Office in the Cadillac DNR Service Center  
8015 Mackinaw Trail, Cadillac, MI 49601 ; phone 231- 775-9727



For more information on this or other areas, contact DNR offices, visit the DNR online at [www.michigan.gov/dnr](http://www.michigan.gov/dnr) or scan this QR-block.

### MI-HUNT

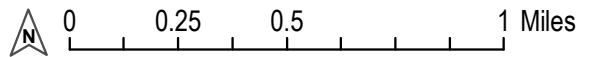
Try MI-HUNT, the DNR's online interactive mapping tool that helps you plan your hunting, trapping, or outdoor recreation adventures! [www.michigan.gov/mihunt](http://www.michigan.gov/mihunt)



Note: this is a select area of State Forest land, which is managed cooperatively for wildlife by the DNR Wildlife and Forestry Divisions.

### Legend:

- |             |  |  |
|-------------|--|--|
| State Land: | Wildlife/Game Area   | State Forest (outside of area)           |
| Parking:    | Prepared Lots  | Rustic or Shoulder-side Parking          |
| Boating:    | NO Prepared Ramp   | NO Rustic or Drop-in                     |
| Roads:      | Highways or Paved  | Marsh in Area                            |
| Water:      | Lakes, Ponds   | Gravel or Dirt Roads, Two-Tracks, Trails |
| Political:  | Town-Range-Section Lines (labelled 1-36, near center of block) | Rivers, Streams                          |
|             |  | Seas, Streams, Drains                    |



**Important!** 150 yards or 450 feet Safety Zones (No Shooting!) are enforced around all buildings and structures at all times. Be Safe! Always be careful around water and ditch/dikes for deep water!

Look for Watchable Wildlife viewing area signs in this area, for locations and more information about trails or features.

GPS coordinates at flagged point (white box near point):  
[ 1 ] parking on east side of areas      Lat.44°29'31.3"N, Long.84°57'20.2"W.



**Hunter Monies Help  
Make This Area  
Possible**

