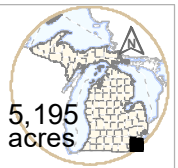




POINTE MOUILLEE STATE GAME AREA

- All Area, General Map -
in Monroe and Wayne Counties



5,195 acres

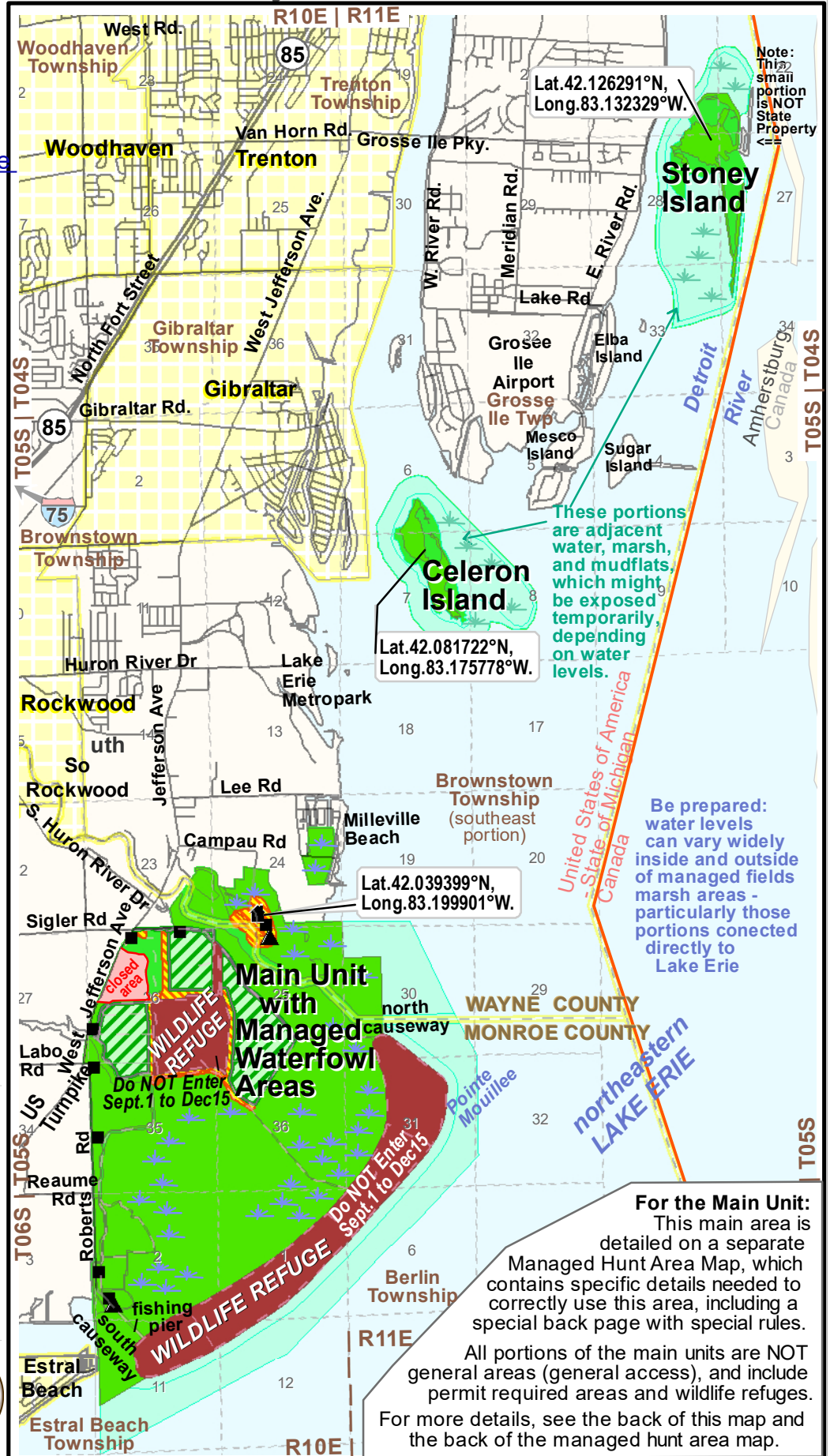
Contact:

[Pointe Mouillee SGA](#)
[Headquarters/ DNR Wildlife Office](#)
 37205 Mouillee Road,
 Rockwood, MI 48173
 734-379-9692

State Wildlife/Game Area:

- Hunting Land - General Area
- Managed Hunt Units- see lower-right comment and back
- Wildlife Refuge, seasonal - Do NOT Enter, No Hunting
- Safety Zones - NO Hunting
- Area Headquarters
- Parking Lots - park only in posted lots
- Boating Ramp Marsh

0 0.5 1 2 Miles
 Hunter Safety Zones of 150 yards (450 feet) are enforced around all buildings/structures at all times.



Note: This small portion is NOT State Property

These portions are adjacent water, marsh, and mudflats, which might be exposed temporarily, depending on water levels.

Be prepared: water levels can vary widely inside and outside of managed fields marsh areas - particularly those portions conected directly to Lake Erie

For more information and help on areas: contact DNR offices, visit the DNR online (www.mi.gov/dnr), click-on or scan the QR-block. Complete rules and regulations are online (www.mi.gov/dnr/laws). This geospatial PDF has embedded GPS coordinates and links.



For the Main Unit:
 This main area is detailed on a separate Managed Hunt Area Map, which contains specific details needed to correctly use this area, including a special back page with special rules.
 All portions of the main units are NOT general areas (general access), and include permit required areas and wildlife refuges.
 For more details, see the back of this map and the back of the managed hunt area map.



POINTE MOUILLEE STATE GAME AREA SPECIAL USE AND HUNTING RULES

All other applicable State Land Use rules and regulations apply, unless modified by the text below. The standard “Wildlife and Game Area - State Land Rules” (doc# IC 2598) may be provided near this map when provided as hardcopy, or see details online at <http://www.michigan.gov/dnr> where details on this and other areas are available, plus more maps, and specifics on rules, regulations, laws, & more information for users of public lands.

NOTE: It is your responsibility as a user of public lands, to ensure you are informed of all current rules and regulations relevant to your activities. The information presented here represents some details relevant to land use, but this is not a complete list of all rules and regulations, and may not be as immediately updated as current legislation and rules. This product is not a legal notice, nor a complete collection of hunting regulations and laws. It is a condensed tool issued for convenience on this specific subject. Contact your local DNR office if you have questions, or to verify regulations relating to possible activities before engaging in those activities. DNR provides information on rules, regulations, laws, and more at <http://www.michigan.gov/dnrlaws>.

If you have questions or comments about this area or its management, please contact the Pointe Mouillee DNR Wildlife Field Office, at 37205 Mouillee Road, Rockwood, Michigan 48173; phone (734) 379-9692.

Note the area is composed of the main unit, and the Celeron Island and Stoney Island units which are in the Detroit River, north of main unit.

GENERAL RULES:

- You may not enter the area posted “WILDLIFE REFUGE - DO NOT ENTER” or “WILDLIFE REFUGE – CLOSED TO ALL USE AND OCCUPANCY” from September 1 until December 15 (note the change in dates of start & end of closure, as of August 2013).
- During the waterfowl hunting season, you may not enter any part of the game area posted “STATE GAME AREA - HUNTING BY PERMIT ONLY” without written permission. Other dates and activities are not allowed; read below or ask the area office for details.
- For additional information or assistance regarding the State Game Area, please contact the office (contact details provided above).

REGARDING WATERFOWL HUNTING - for this specific area:

- 1.) Opening weekend, for both Saturday and Sunday, are pre-registered reserve hunts for waterfowl hunting.
- 2.) Managed waterfowl hunting permits for the Nelson, Long Pond, and Walpatich Managed Units (zones), are issued through drawings at the Pointe Mouillee SGA headquarters check station, issued throughout the entire waterfowl season unless otherwise posted, and:
 - (a.) Opening day, the first Saturday has two drawings for the morning/AM at 5:30 a.m. and for the afternoon/PM at 11:00 a.m.
 - (b.) Each Sunday, after opening day, has two drawings: morning/AM at 5:30 a.m., & afternoon/PM at 11:00 a.m.
 - (c.) Each Tuesday has one drawing for the afternoon/PM at 11:00 a.m. (valid to the end of that day’s shooting hours);
 - (d.) Each Thursday has one drawing for the morning/AM at 5:30 a.m. and those permits are valid for the entire day’s shooting hours.
 - (e.) On other days (Monday, Wednesday, Friday & Saturday) there are no drawings and there is no hunting in the managed zones.
- 3.) On draw days listed above, the PMSGA check station will be open until 4:00 p.m. for issuing leftover, unused, or unissued permits.
- 4.) On any day with two drawings, if you have participated in a morning drawing and issued a hunting permit through that draw (you were successful), then you may not participate in the afternoon drawing but you could be issued an unused/leftover permit.
- 5.) Hunting by permit is restricted to specific assigned zones in the permit area (see map or ask), with a limit of 1 to 4 hunters per zone.
- 6.) Permit holders must return their permits to the designated location within two hours after their hunt.
- 7.) All waterfowl taken must be reported and presented for examination at the PMSGA check station.
- 8.) Each hunter is limited to 25 shells (1 box) with a shot size no larger than 1, while hunting in the managed zones. It is unlawful to possess or use any shot shells loaded with any material other than steel, bismuth, tungsten alloy, or other federally approved shot.

REGARDING YOUTH HUNTS: See the annual Waterfowl Hunting Digest/Regulations-Summary for youth hunt details, dates of youth preferred draws, and more details - or see DNR Laws online (<http://www.michigan.gov/dnrlaws>). Preferred drawings are available for hunting parties with at least one youth 16 years of age or younger and up to two adults, with a maximum party size of four. Youths 10-16 who completed Hunter Safety Course, can be accompanied by a parent, guardian, or someone 18 years of age or older designated by the parent or guardian. Youths hunting under the apprentice license or the Mentored Youth Hunting Program mentor license must be accompanied by an adult 21 years of age or older who has completed a Hunter Safety Course.

REGARDING TRAPPING: Trapping furbearers, or trapping of any kind, is by local permit only. Trapping does not start until the end of the annual waterfowl season. Contact the Pointe Mouillee office for details.

REMINDERS OF PROHIBITED ACTIVITIES IN THIS AREA: (DNR Laws, rules & regulations are online at <http://www.mi.gov/dnrlaws>)

- a.) Do not enter, use, or occupy any part of the state-owned lands of Pointe Mouillee SGA between 11:00 p.m. and 4:00 a.m. (when area is closed), unless specially permitted by the office. Camping is not allowed; to build or use a ground fire is not allowed.
- b.) No parking outside of designated parking areas. See area map for the allowed parking locations or contact the office for assistance.
- c.) No taking cans or glass bottles into the permit zones; Do not possess or consume alcoholic beverages of any kind when in the area.
- d.) Do not ride or lead a horse, other riding animal, or pack animal, or to allow such animal or any animal-drawn vehicle to use or travel on or through any areas other than established public roads or trails designated for such use, without proper written permission. Proper written permission means a written permit issued by the DNR Director, or by a representative authorized by him to do so.
- e.) All dogs must be on leash from April 15th to July 15th during the annual wildlife nesting period.
- f.) No using an amphibious vehicle, all-terrain, air-boat, hovercraft, or any other motor-driven vehicle while in the managed hunting area or areas posted as such. Outboard motors are allowed but must be operated at a slow no-wake speed (such as 10 mph).
- g.) Check current waterfowl and hunting digests/regulations-summaries for necessary licenses, stamps, season dates, and other details.
- g.) No hunting or shooting from any dike, road, trail, safety zone, or retrieving zone. Beware of and do not shoot pumps or equipment.
- h.) No constructing a shooting pit or blind in the area. Portable blinds are allowed but must be removed at the end of each hunt. No screw-in steps. Do not use a firearm or bow-and-arrow for target shooting of any kind.
- i.) No trapping in the area, except under a written permit. Contact the area office for detailed information.
- k.) Other rules and regulations for the area may be posted in the area; look for additional signs or notices to ensure you have a safe hunt. **CAUTION:** Use care near all open water areas; some may contain deep water, depending on season and recent rainfall.

BE A SAFE HUNTER - A safe hunter obeys laws governing hunting and boating, is alert to any conditions hazardous to their personal safety and the safety of other hunters and persons.

(Rev. 9/15/2023 –WLD/MLS)

Equal Rights for Natural Resources Users The Michigan Department of Natural Resources (MDNR; <http://www.michigan.gov/dnr>) provides equal opportunities for employment and access to Michigan’s natural resources. Both State and Federal laws prohibit discrimination on the basis of race, color, national origin, religion, disability, age, sex, height, weight, or marital status under the Civil Rights Acts of 1964 as amended (MI PublicAct/PA 453 and MI PA 220, Title V of the Rehabilitation Act of 1973 as amended, and the Americans with Disabilities Act). If you believe that you have been discriminated against in any program, activity, or facility, or if you desire additional information, please write or contact: Human Resources, Michigan Department of Natural Resources, P.O. Box 30028, Lansing, MI 48909-7528, or the Michigan Department of Civil Rights, Cadillac Place, 3054 West Grand Blvd, Suite 3-600, Detroit, MI 48202, or the Division of Federal Assistance, U.S. Fish and Wildlife Service, 4401 North Fairfax Drive, Mail Stop MBSP-4020, Arlington, VA 22203. For information or assistance on this publication and its content, or for information about other State land areas or activities, contact the Michigan Department of Natural Resources, Wildlife Division, P.O. Box 30444, Lansing, MI 48909-7944, or through the internet at <http://www.michigan.gov/dnr>. TTY / TTD (teletype): 711 (Michigan Relay Center). This publication is available in alternative formats upon request.