



STATE OF MICHIGAN - DEPARTMENT OF NATURAL RESOURCES  
**CANNON CREEK FLOODING No.2**  
**STATE WILDLIFE MANAGEMENT AREA**



- General Map -  
**Missaukee County**

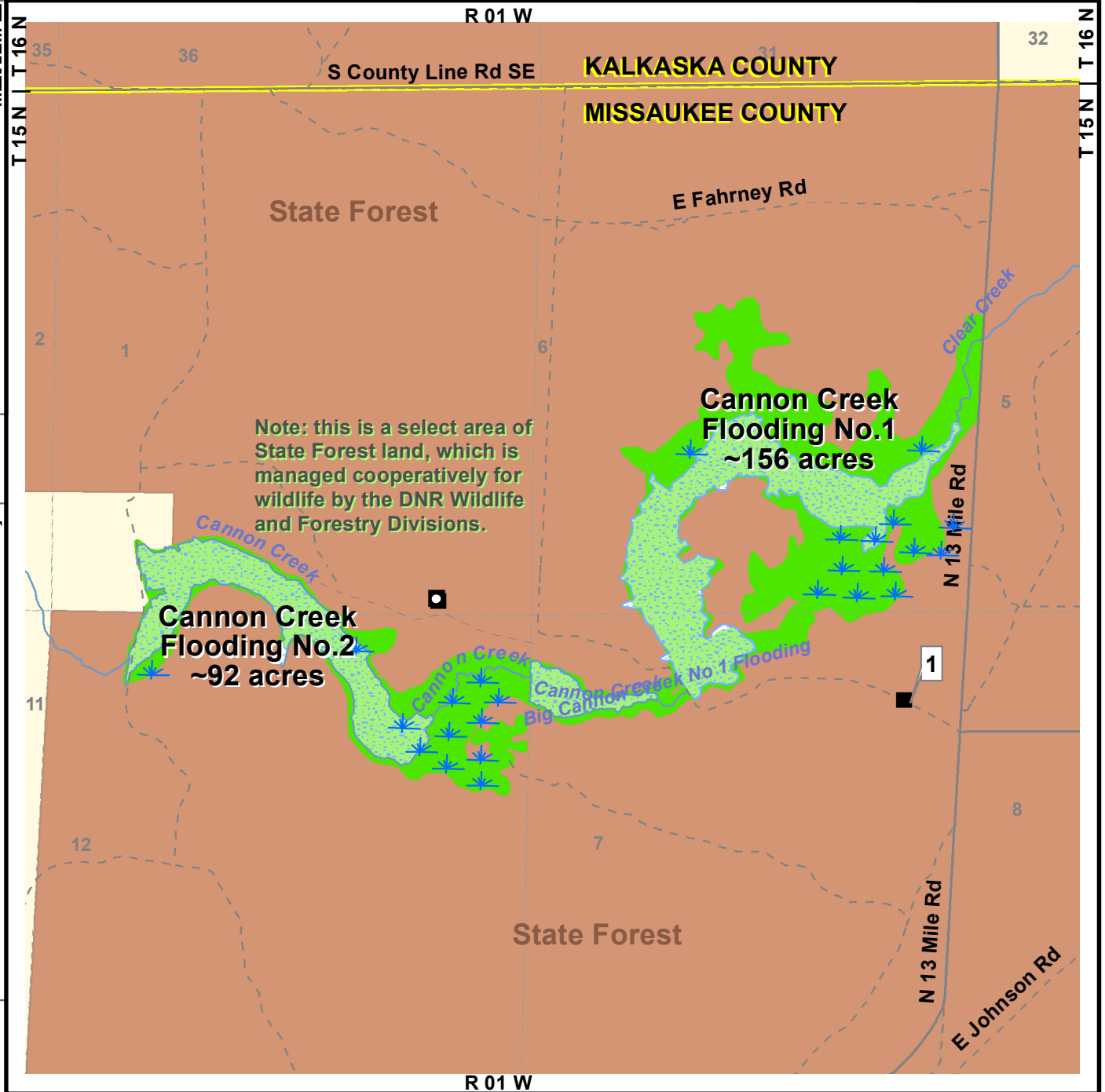
Area headquarters: Wildlife Office in the Cadillac DNR Service Center  
 8015 Mackinaw Trail, Cadillac, MI 49601 ; phone 231- 775-9727



For more information on this or other areas, contact DNR offices, visit the DNR online at [www.michigan.gov/dnr](http://www.michigan.gov/dnr) or scan this QR-block.

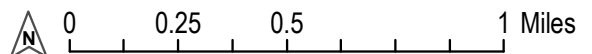
**MI-HUNT**

Try MI-HUNT, the DNR's online interactive mapping tool that helps you plan your hunting, trapping, or outdoor recreation adventures! [www.michigan.gov/mihunt](http://www.michigan.gov/mihunt)



**Legend:**

- |             |  |  |
|-------------|--|--|
| State Land: | Wildlife/Game Area   | State Forest (outside of area)           |
| Parking:    | Prepared Lots  | Rustic or Shoulder-side Parking          |
| Boating:    | NO Prepared Ramp   | NO Rustic or Drop-in                     |
| Roads:      | Highways or Paved  | Marsh in Area                            |
| Water:      | Lakes, Ponds   | Gravel or Dirt Roads, Two-Tracks, Trails |
| Political:  | Town-Range-Section Lines (labelled 1-36, near center of block) | Rivers, Streams                          |
|             |  | Seas, Streams, Drains                    |



**Important!** 150 yards or 450 feet Safety Zones (No Shooting!) are enforced around all buildings and structures at all times. Be Safe! Always be careful around water and ditch/dikes for deep water!

Look for Watchable Wildlife viewing area signs in this area, for locations and more information about trails or features.

GPS coordinates at flagged point (white box near point):

[ 1 ] parking on east side of areas

Lat.44°29'31.3"N, Long.84°57'20.2"W.



**Hunter Monies Help Make This Area Possible**

Map Revised 03/11/2016 - Wildlife Div./MLS

