

Figure 9.—Sediment sampling locations in the Tahquamenon River, August 22–23, 2005. Samples were taken with a Ponar dredge. Data summary (Table 5) from each site consists of multiple samples taken in cross-section.

Tahquamenon River Assessment

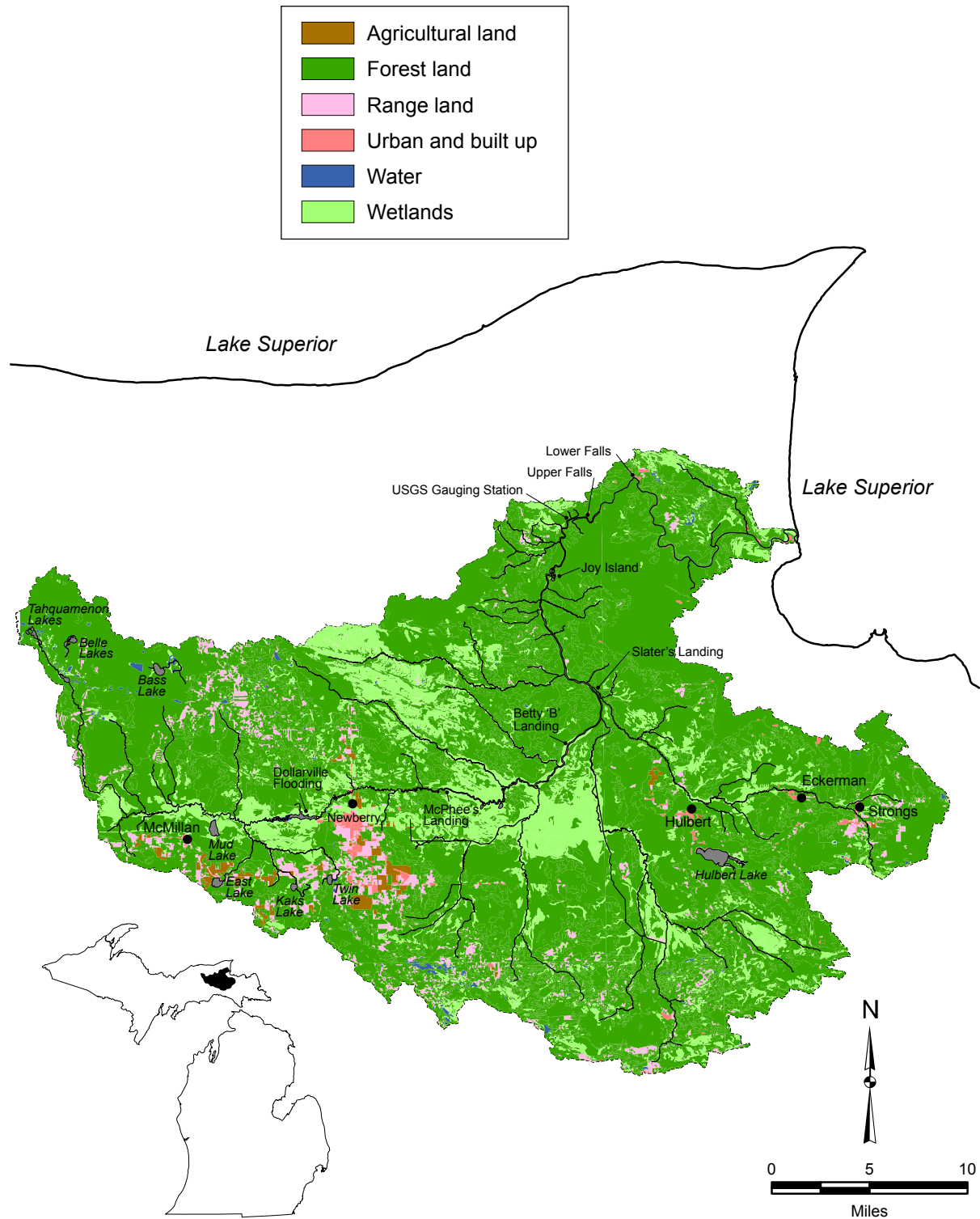


Figure 10.—Land type and use in the Tahquamenon River watershed. Data from MDNR Spatial Information Resource Center, unpublished data, 2004.