



TIMBER SALE MAP

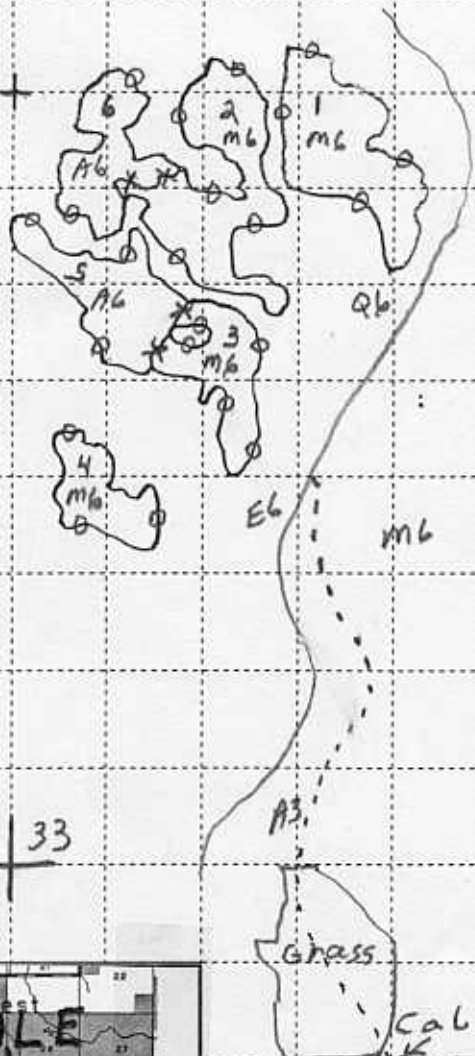
This information provided under authority of Part 525, Act 451 of 1994, as amended.

Unit No. 32	Sale No. 001	Year 07	Sale Type 01
----------------	-----------------	------------	-----------------

Forest Management Unit GWINN MANAGEMENT UNIT		Mapped by: J KOSKI	Cruised by: KOSKI	Date 3/13/2006
Township T44N	Range R23W	Section(s) 28,33	Subdivision S-28 S1/2SW, S-33 NW1/4, NWSW	Scale: 1 inch = 1/4 mile

COVER TYPE					DENSITY			
A = Aspen	F = Spruce Fir	L = Lowland Brush	Q = Mixed Swamp Cnfr	V = Bog or Marsh	1 = Non Stocked	6 = Pole Timber Well		
B = Paper Birch	G = Grass	M = Maple, Beech, Birch	R = Red Pine	W = White Pine	2 = Seedling Sapling Poor	7 = Saw Timber Poor		
C = Cedar	H = Hemlock	N = Marsh	S = Black Spruce	X = Non Stocked	3 = Seedling Sapling Well	8 = Saw Timber Medium		
D = Treed Bog	J = Jack Pine	O = Oak	T = Tamarack	Y = Sand Dunes	4 = Pole Timber Poor	9 = Saw Timber Well		
E = Swamp Hardwoods	K = Rock	P = Lowland Poplar	U = Upland Brush	Z = Water	5 = Pole Timber Medium			

LAT HRO P S ALE 84.3 AC.



Met. 33
Delta

X X	RED LINE UNIT	
O O	RED PAINT	
1-4	SELECT CUT UNITS	61.2 AC.
5,6	CLEAR CUT UNITS	23.1 AC.
⊙	EXCLUSION IN UNIT 3	



Callie
C.R. H 09
Delta Co.
Pvt.