



TIMBER SALE MAP

This information provided by authority of Part 525 of Act 451, PA 1994, as amended.

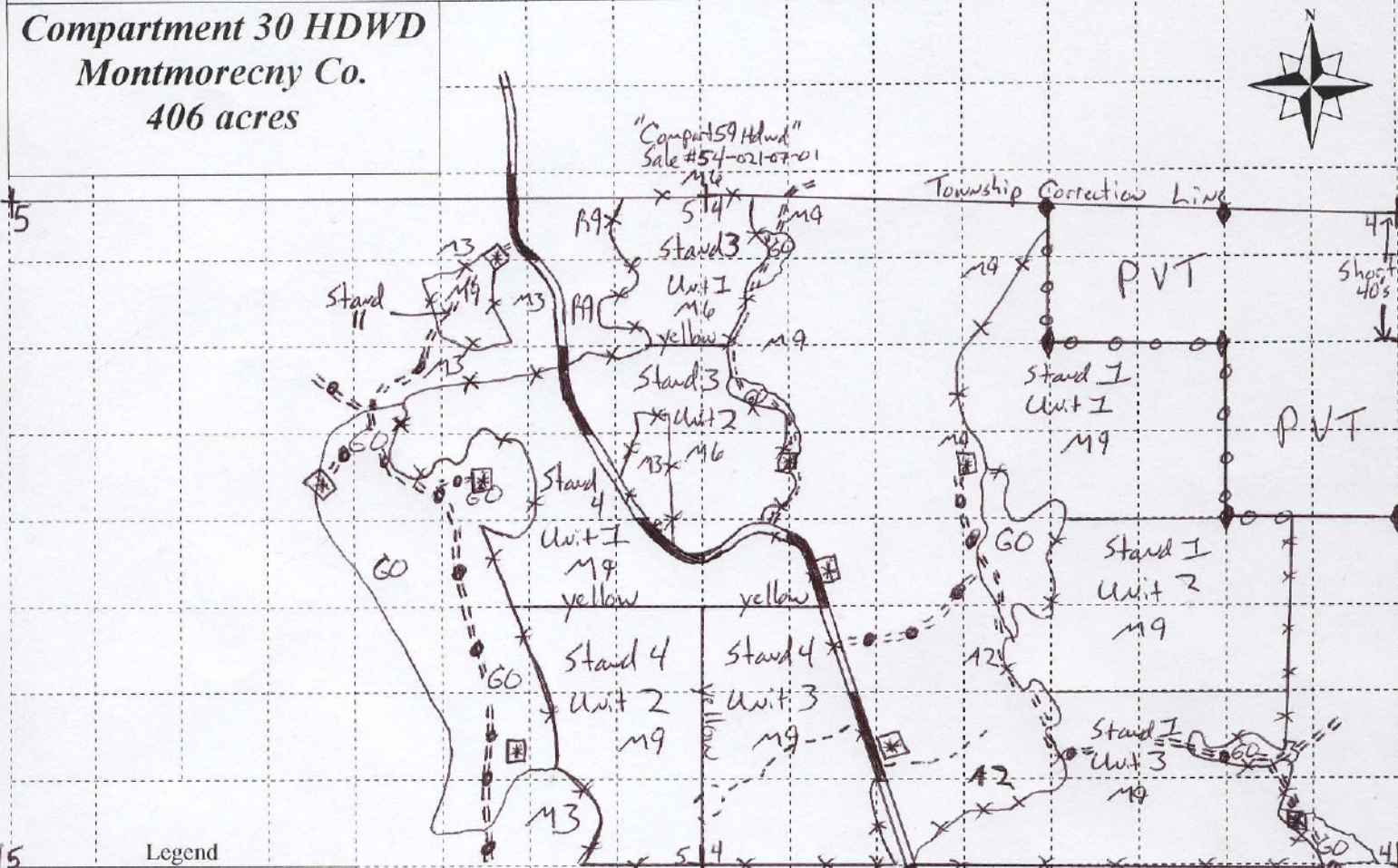
Sale Number	Year
NA	2008

Forest Management Unit Atlanta	County Montmorency	Mapped By C. Stevens
Township 31N	Range 01E	Cruised By NA
Section(s) and Subdivision(s) 4: SWNE, NW1/4, SE1/4, SW1/4 5: NE1/4, E1/2SE, NWSE		

Date 01/07/08	Page 1	of 1
Scale: 4 inch = 1 mile		

Cover Type				Density	
A = Aspen	G = Grass	O = Oak	U = Upland Brush	0 = Non Stocked	5 = Pole Timber Medium
B = Paper Birch	H = Hemlock	P = Lowland Poplar	V = Bog or Marsh	1 = Seedling Sapling Poor	6 = Pole Timber Well
C = Cedar	J = Jack Pine	Q = Mixed Swamp Cnfr	W = White Pine	2 = Seedling Sapling Medium	7 = Saw Timber Poor
D = Tread Bog	L = Lowland Brush	R = Red Pine	X = Non Stocked	3 = Seedling Sapling Well	8 = Saw Timber Medium
E = Swamp Hdwoods	M = Mpl, Bch, Brch	S = Black Spruce	Z = Water	4 = Pole Timber Poor	9 = Saw Timber Well
F = Spruce Fir	N = Marsh	T = Tamarack			

Compartment 30 HDWD
Montmorency Co.
406 acres



Legend

- Sale Boundary: (Red Paint)
- Private Boundary: (Blue Paint)
- Unit Boundary: (Yellow Paint)
- County Road:
- Two-Track:
- Well Sites:
- Pipelines:

Comp: 30
Stand: 1, 3, 4 & 11

