



# TIMBER SALE MAP

This information provided by authority of Part 525 of Act 451, PA 1994, as amended.

Sale Number	Year
	2008

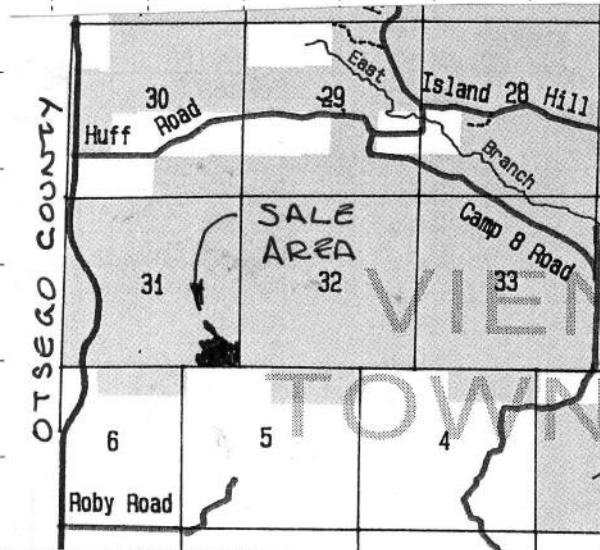
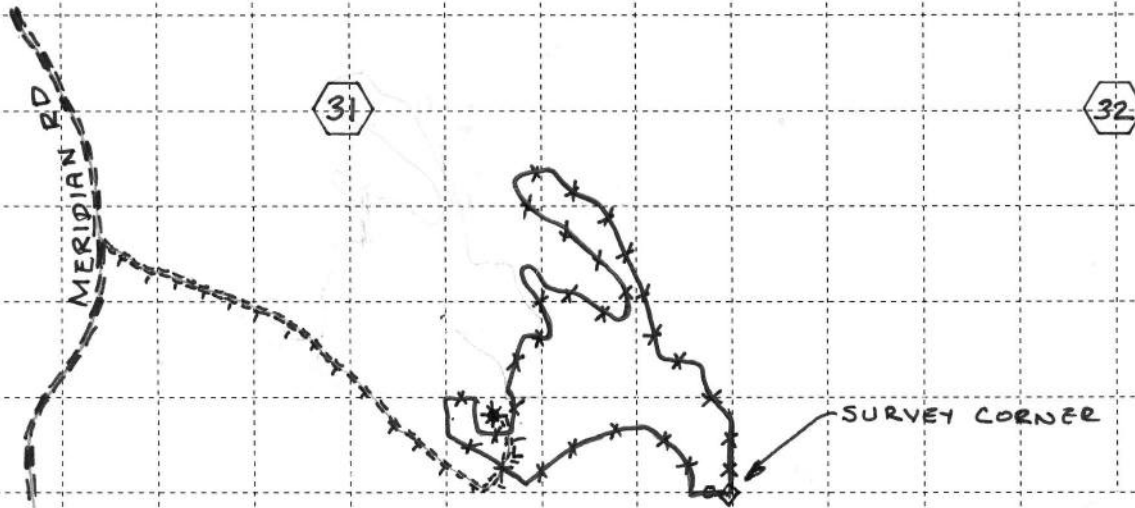
Forest Management Unit Atlanta		County Montmorency	Mapped By Theiner	Date 04/17/2008	Page 1	of 1
Township 31-N	Range 01-E	Section(s) and Subdivision(s) 31: SW/4			Scale: [...4 inches.....] = 1 mile	

Cover Type			
A = Aspen	H = Hemlock	P = Lowland Poplar	V = Bog or Marsh
B = Paper Birch	J = Jack Pine	Q = Mixed Swamp Cnfr	W = White Pine
C = Cedar	L = Lowland Brush	R = Red Pine	X = Non Stocked
E = Swamp Hdwoods	M = Mpl, Bch, Brch	S = Black Spruce	Z = Water
F = Spruce Fir	N = Marsh	T = Tamarack	
G = Grass	O = Oak	U = Upland Brush	

Density	
0 = Non Stocked	5 = Pole Timber Medium
1 = Seedling Sapling Poor	6 = Pole Timber Well
2 = Seedling Sapling Medium	7 = Saw Timber Poor
3 = Seedling Sapling Well	8 = Saw Timber Medium
4 = Pole Timber Poor	9 = Saw Timber Well



## DUKE HARDWOODS THIRTY EIGHT ACRES MONTMORENCY COUNTY



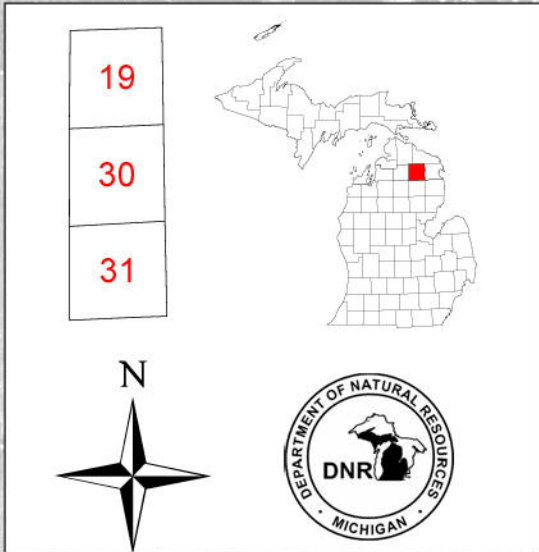
Sale Boundary (Red Paint)	- * - * - * -
Sale Boundary (Blue Paint)	- o - o - o -
County Road	==
Two Track	====
Well Site	*
Pipeline	++++
Landing	L

Comp. 33  
Stand 31



# Field Map

Compartment 33  
 T31N, R1E, Sec. 19, 30, 31  
 County: Montmorency  
 Unit: Atlanta  
 YOE: 2007  
 Acres: 1,283 GIS Calculated  
 Stand Examiner: Richard Barber  
 Map Revised: 2/02/2006  
 Map Phase: Post Review



**Legend**

- Miris Corners
- - Poor Dirt Roads
- +- Abandoned Railroads
- Pipelines
- \* Gas Wells
- Stand Boundary
- ▨ Biodiversity/Old Growth Area
- ▧ 026 - Opening Maintenance
- ▩ 098 - Other
- ▤ 800 - Selection

Name County Gravel Roads  
 Name Public Paved Roads  
 Name Public Gravel Roads

