



# TIMBER SALE MAP

This information provided by authority of Part 525 of Act 451, PA 1994, as amended.

Sale Number	Year
NA	2008

Forest Management Unit Atlanta	County Presque Isle	Mapped By C. Stevens	Date 04/19/2008	Page 1	of 1
Township 31N	Range 03E	Section(s) and Subdivision(s) 2: NE1/4, S1/2SE, SWSE, W1/2SW 11: N1/2NW, W1/2SW, S1/2SE, NWSE	Cruised By NA		
			Scale: 4 inch = 1 mile		

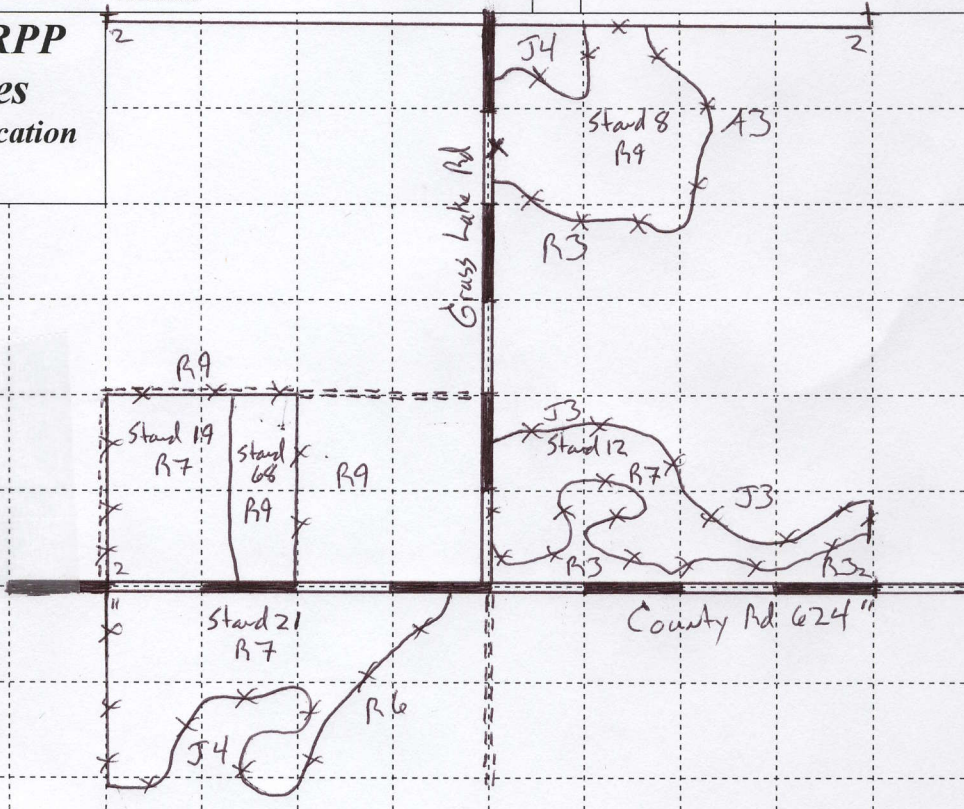
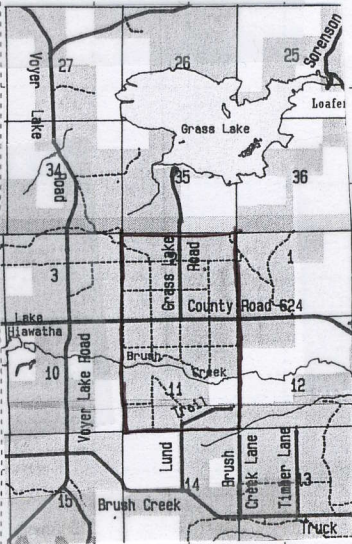
### Cover Type

- |                   |                    |                      |                  |
|-------------------|--------------------|----------------------|------------------|
| A = Aspen         | G = Grass          | O = Oak              | U = Upland Brush |
| B = Paper Birch   | H = Hemlock        | P = Lowland Poplar   | V = Bog or Marsh |
| C = Cedar         | J = Jack Pine      | Q = Mixed Swamp Cnfr | W = White Pine   |
| D = Treed Bog     | L = Lowland Brush  | R = Red Pine         | X = Non Stocked  |
| E = Swamp Hdwoods | M = Mpl, Bch, Brch | S = Black Spruce     | Z = Water        |
| F = Spruce Fir    | N = Marsh          | T = Tamarack         |                  |

### Density

- |                             |                        |
|-----------------------------|------------------------|
| 0 = Non Stocked             | 5 = Pole Timber Medium |
| 1 = Seedling Sapling Poor   | 6 = Pole Timber Well   |
| 2 = Seedling Sapling Medium | 7 = Saw Timber Poor    |
| 3 = Seedling Sapling Well   | 8 = Saw Timber Medium  |
| 4 = Pole Timber Poor        | 9 = Saw Timber Well    |

**Compartment 49 RPP**  
**Approx. 268 acres**  
**Paint Color & Approx Location**



### Legend

- Sale Boundary: (Red Paint)
  - Private Boundary: (Blue Paint)
  - Unit Boundary: (Yellow Paint)
  - County Road:
  - Two-Track:
  - ORV Trail:  *see OI Map*
- Comp: 49  
 Stands: 8, 12, 19, 21, 38, 42 & 68

