




F Sturgeon Valley Rd


Compartment 041  
T32N, R01W, Sec. 25-27  
County: Otsego  
Unit: Pigeon River

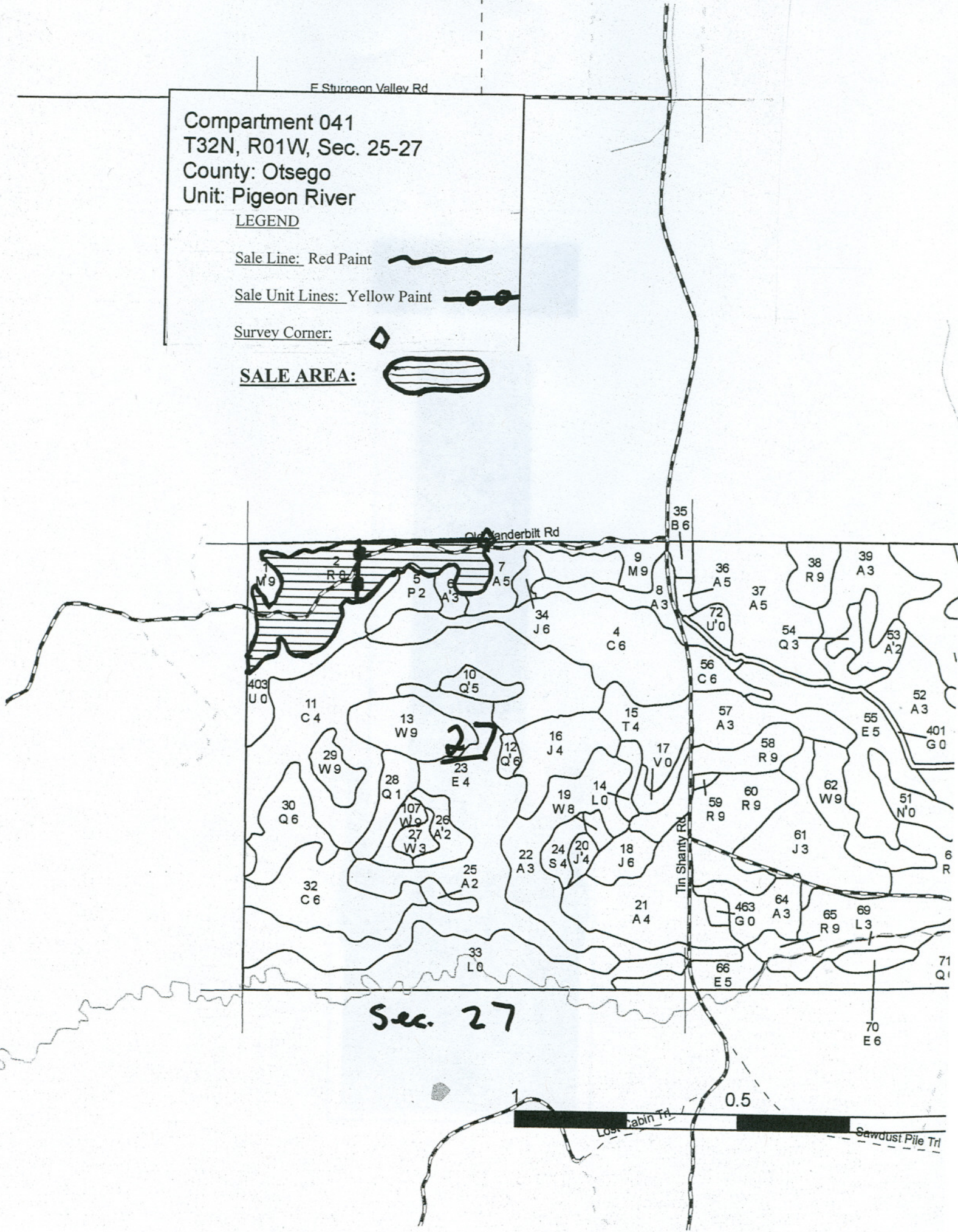
LEGEND

Sale Line: Red Paint 

Sale Unit Lines: Yellow Paint 

Survey Corner: 

SALE AREA: 



COMPARTMENT 31  
 T32N, R2W, SEC. 1, 12, 13, 24  
 COUNTY: OSTEGO  
 UNIT: PIGEON RIVER  
 FOREST: MACKINAW  
 YOE: 2005  
 ACRES: 2,558 GIS CALCULATED  
 MAP REVISED: 7/10/2003  
 STAND EXAMINER: DON MITTLESTAT

**LEGEND**

- MIRIS CORNER
- PAVED ROADS
- == GRAVEL & GOOD DIRT ROADS
- === POOR DIRT ROADS
- - - CLOSED/ABANDONED ROADS
- - - SNOWMOBILE TRAILS
- ORV TRAILS
- LAKES
- RIVERS
- INTERMITTENT STREAMS
- POWER LINES
- PIPELINES
- STAND BOUNDARY

N

**TIMBER SALE MARKING LEGEND**

**SALE LINE:** Red Paint

**PAYMENT UNIT LINES:** Yellow Paint

**ADJACENT TIMBER SALE:** Red Paint

**SALE AREA:**

