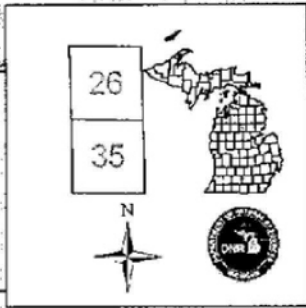
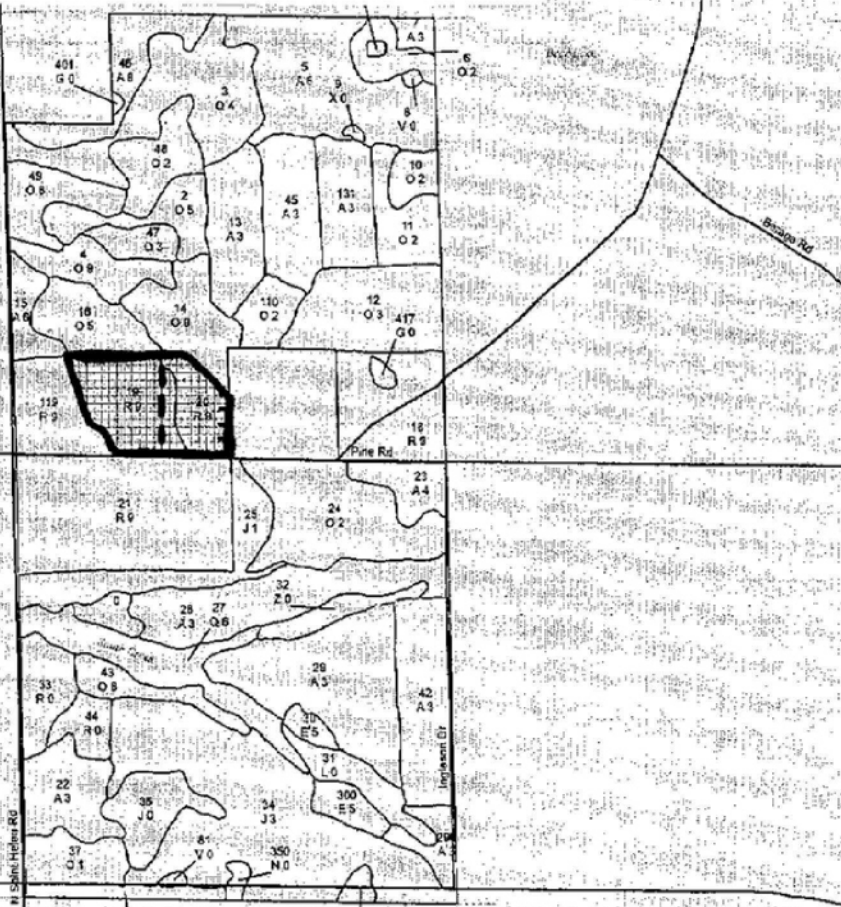


Compartment 49  
 T24N, R01W, Sec. 26, 35  
 County: Roscommon  
 Unit: Roscommon  
 YOE: 2004  
 Acres: 1194 GIS Calculated  
 Stand Examiner: Dafe Ekdorn  
 Map Revised: 1/18/2008  
 Map Phase: Draft



- Legend**
- Miris Corners
  - Paved Road
  - - - Poor Dirt Road
  - · - Intermittent Stream/Drain
  - Stream
  - Lakes and Rivers
  - Stand Boundary
  - ▨ Seed Tree

**71-026-08-01**  
**VACHON ROAD R.P.P.**  
**Approximately 44 Acres**



- Sale Boundary (Red Paint)
- Private Boundary (Blue Paint)
- Unit Line (Yellow Paint)



Old Rail Rd

Old Rd