



TIMBER SALE MAP

This information is provided by authority of Part 525 of Act 451, PA 1994, as amended.

| | |
|-------------|---------|
| SALE NUMBER | YEAR |
| DATE | PAGE OF |
| 4/14/2008 | 1 OF 2 |

| | | |
|----------------------------------------------------|---------------------------|------------------------------------------------------|
| FOREST MANAGEMENT UNIT Sault - Naubinway | COUNTY Mackinac | MAPPED BY Rodock |
| TOWNSHIP T43N | RANGE R06W | SECTION(S) AND SUBDIVISION(S) 1, 2, and 11 |
| | | CRUISED BY |

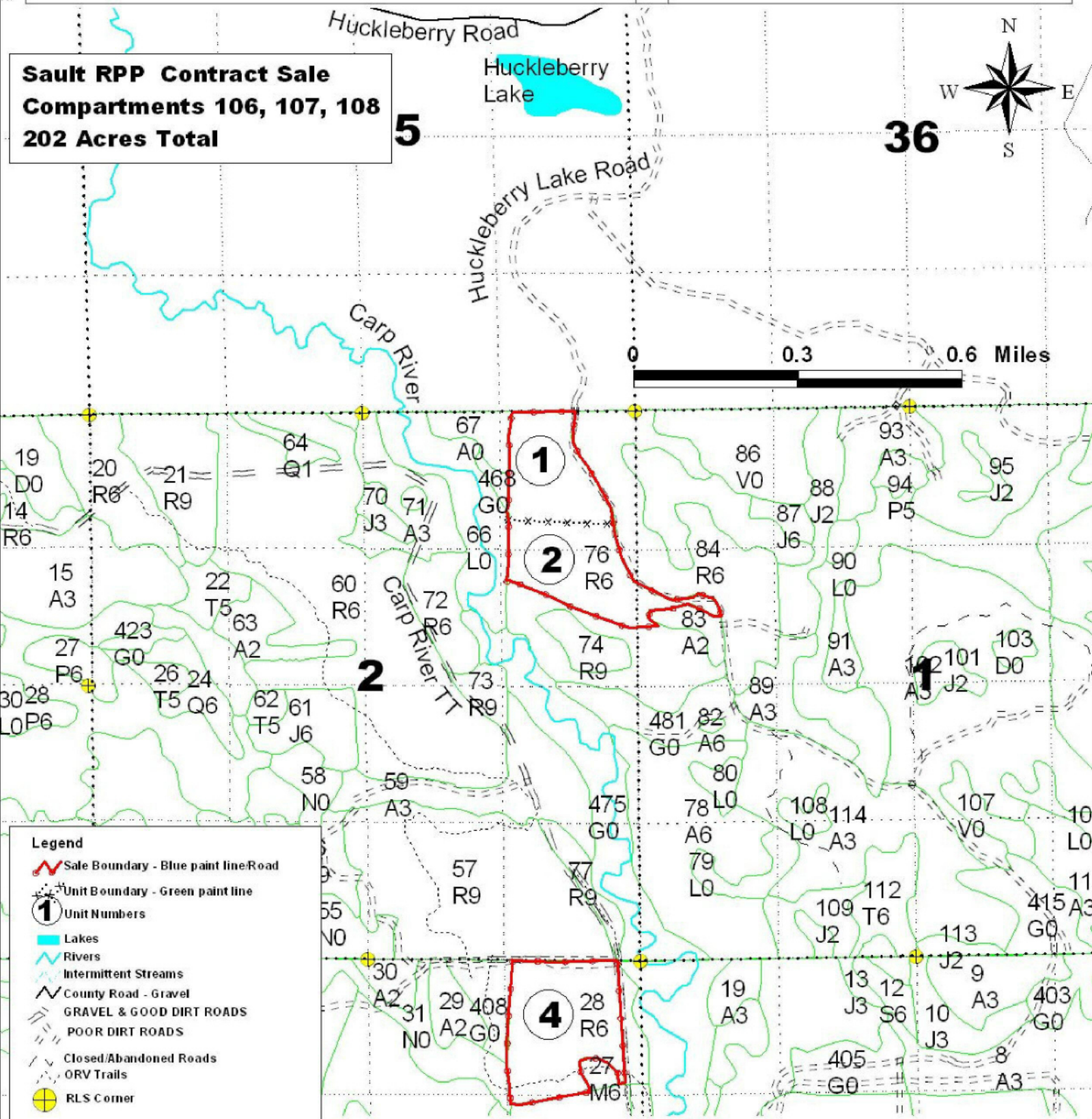
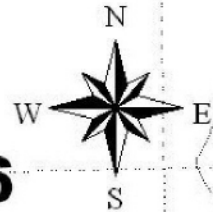
| Cover Type | | | |
|-------------------|--------------------|----------------------|------------------|
| A = Aspen | H = Hemlock | P = Lowland Poplar | V = Bog or Marsh |
| B = Paper Birch | J = Jack Pine | Q = Mixed Swamp Cnfr | W = White Pine |
| C = Cedar | L = Lowland Brush | R = Red Pine | X = Non Stocked |
| E = Swamp Hdwoods | M = Mpl, Bch, Brch | S = Black Spruce | Z = Water |
| F = Spruce Fir | N = Marsh | T = Tamarack | |
| G = Grass | O = Oak | U = Upland Brush | |

| Density | |
|-----------------------------|------------------------|
| 0 = Non Stocked | 5 = Pole Timber Medium |
| 1 = Seedling Sapling Poor | 6 = Pole Timber Well |
| 2 = Seedling Sapling Medium | 7 = Saw Timber Poor |
| 3 = Seedling Sapling Well | 8 = Saw Timber Medium |
| 4 = Pole Timber Poor | 9 = Saw Timber Well |

Sault RPP Contract Sale
Compartments 106, 107, 108
202 Acres Total

5

36



Legend

- Sale Boundary - Blue paint line/Road
- Unit Boundary - Green paint line
- Unit Numbers
- Lakes
- Rivers
- Intermittent Streams
- County Road - Gravel
- GRAVEL & GOOD DIRT ROADS
- POOR DIRT ROADS
- Closed/Abandoned Roads
- ORV Trails
- RLS Corner



Michigan Department of Natural Resources – Forest, Mineral & Fire Management
TIMBER SALE MAP

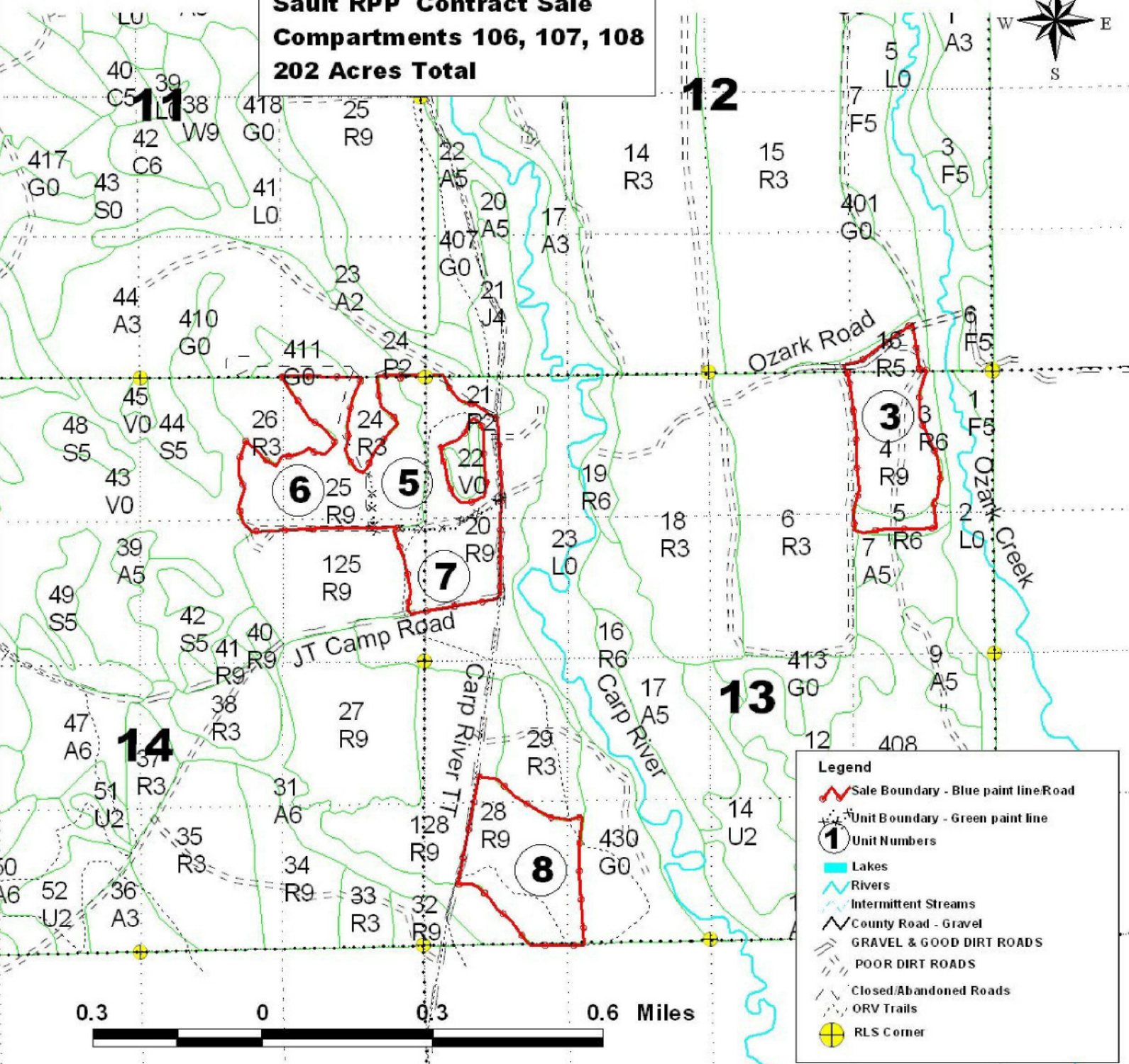
This information is provided by authority of Part 525 of Act 451, PA 1994, as amended.

| | |
|-------------|---------|
| SALE NUMBER | YEAR |
| DATE | PAGE OF |
| 4/9/2008 | 2 2 |

| | | | | | |
|----------------------------------------------------|----------------------|-------------------------------------------------------|----------------------------|-------------------------------|-----------------------|
| FOREST MANAGEMENT UNIT Sault - Naubinway | | COUNTY Mackinac | MAPPED BY Rodock | DATE 4/9/2008 | PAGE OF 2 2 |
| TOWNSHIP T43N | RANGE R06W | SECTION(S) AND SUBDIVISION(S) 12, 13 and 14 | | | |
| TOWNSHIP | | RANGE | | SECTION(S) AND SUBDIVISION(S) | |

| Cover Type | | | | Density | | | |
|-------------------|--------------------|----------------------|------------------|-----------------------------|------------------------|--|--|
| A = Aspen | H = Hemlock | P = Lowland Poplar | V = Bog or Marsh | 0 = Non Stocked | 5 = Pole Timber Medium | | |
| B = Paper Birch | J = Jack Pine | Q = Mixed Swamp Cnfr | W = White Pine | 1 = Seedling Sapling Poor | 6 = Pole Timber Well | | |
| C = Cedar | L = Lowland Brush | R = Red Pine | X = Non Stocked | 2 = Seedling Sapling Medium | 7 = Saw Timber Poor | | |
| E = Swamp Hdwoods | M = Mpl, Bch, Brch | S = Black Spruce | Z = Water | 3 = Seedling Sapling Well | 8 = Saw Timber Medium | | |
| F = Spruce Fir | N = Marsh | T = Tamarack | | 4 = Pole Timber Poor | 9 = Saw Timber Well | | |
| G = Grass | O = Oak | U = Upland Brush | | | | | |

Sault RPP Contract Sale
Compartments 106, 107, 108
202 Acres Total



Legend

- Sale Boundary - Blue paint line
- Unit Boundary - Green paint line
- Unit Numbers
- Lakes
- Rivers
- Intermittent Streams
- County Road - Gravel
- GRAVEL & GOOD DIRT ROADS
- POOR DIRT ROADS
- Closed/Abandoned Roads
- ORV Trails
- RLS Corner

