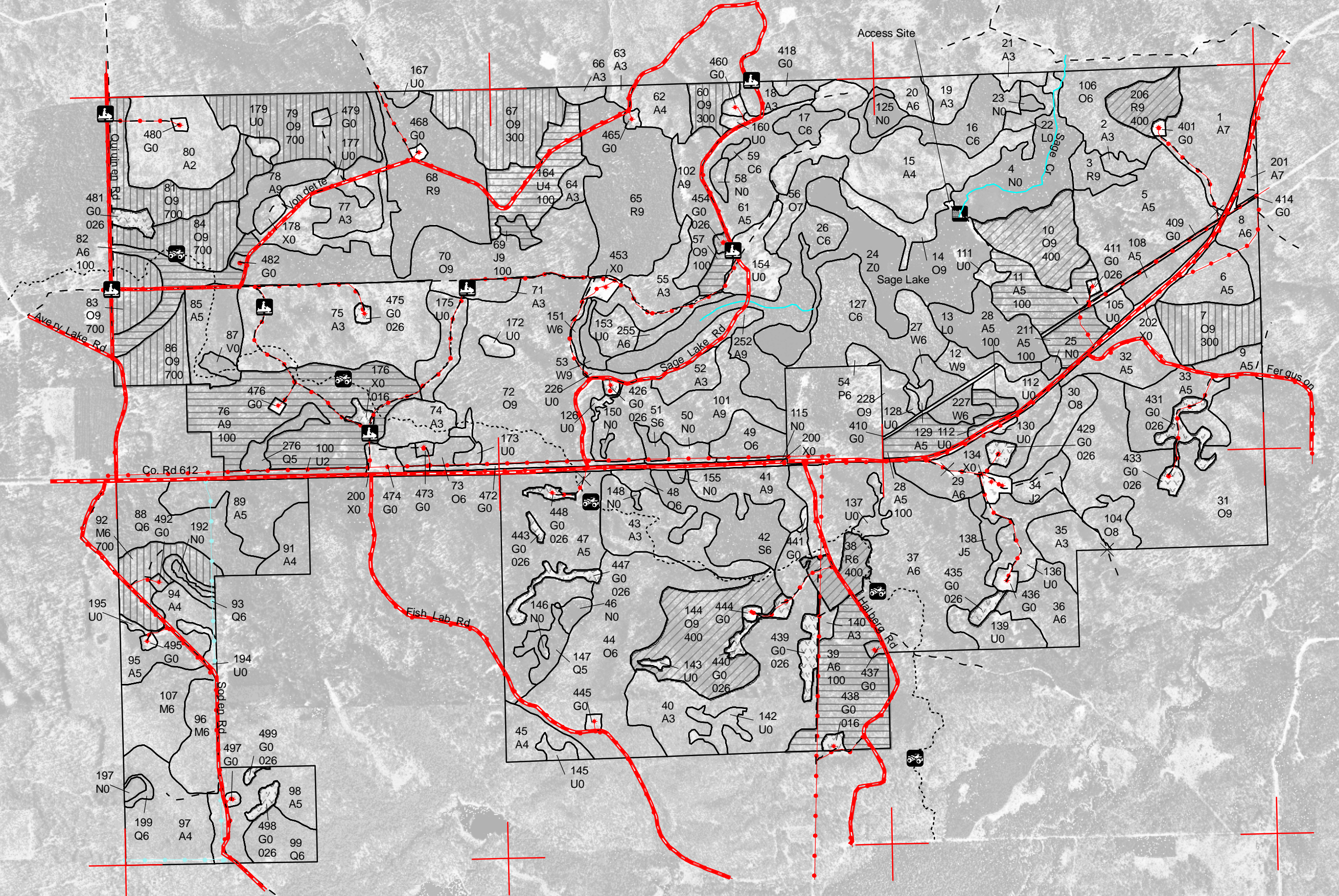
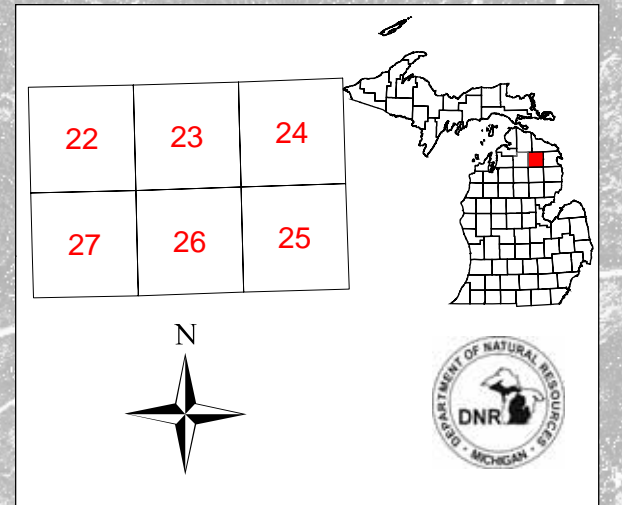


Field Map

Compartment 12
 T29N, R02E, Sec. 22- 27
 County: Montmorency
 Unit: Atlanta
 YOE: 2009
 Acres: 2,807 GIS Calculated
 Stand Examiner: Robert Theiner
 Map Revised: 12/10/2007
 Map Phase: Post-review

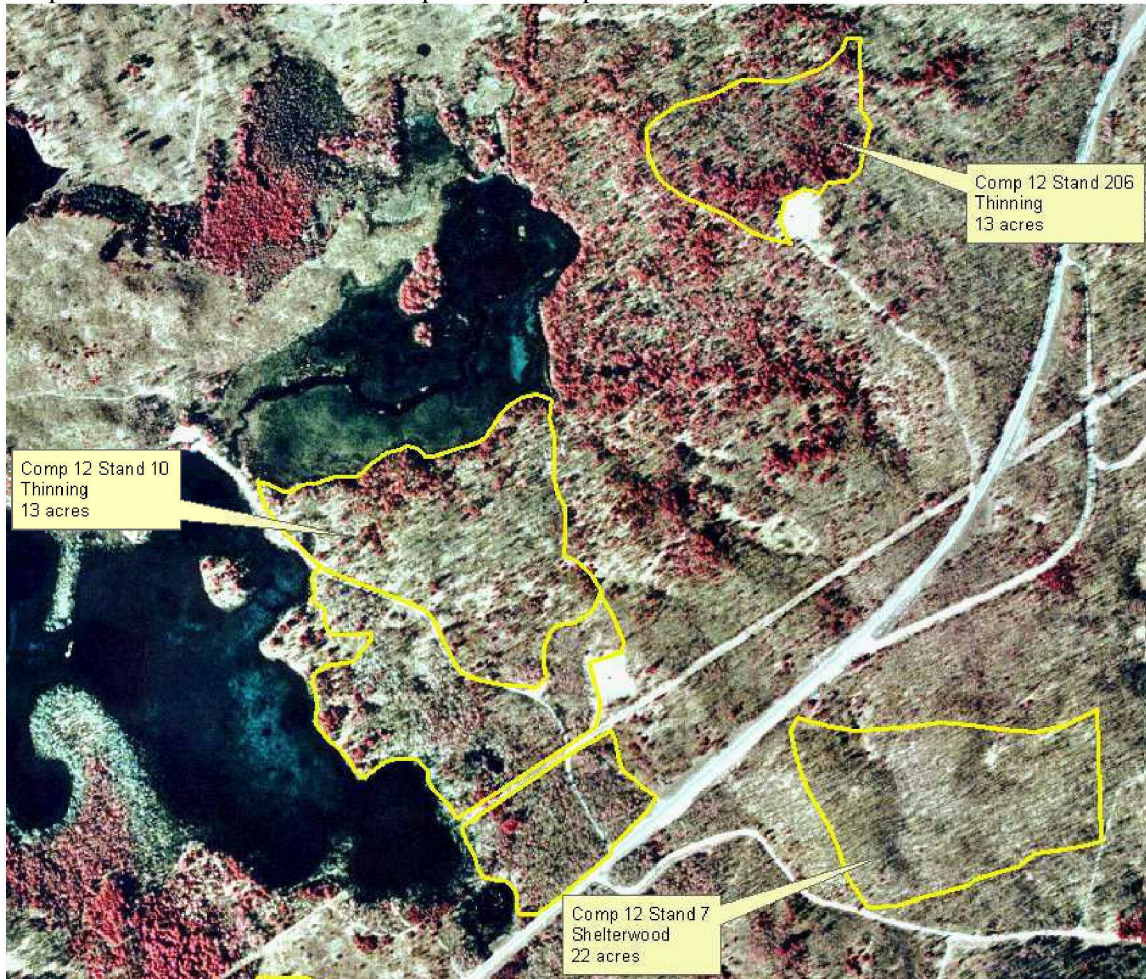


Legend

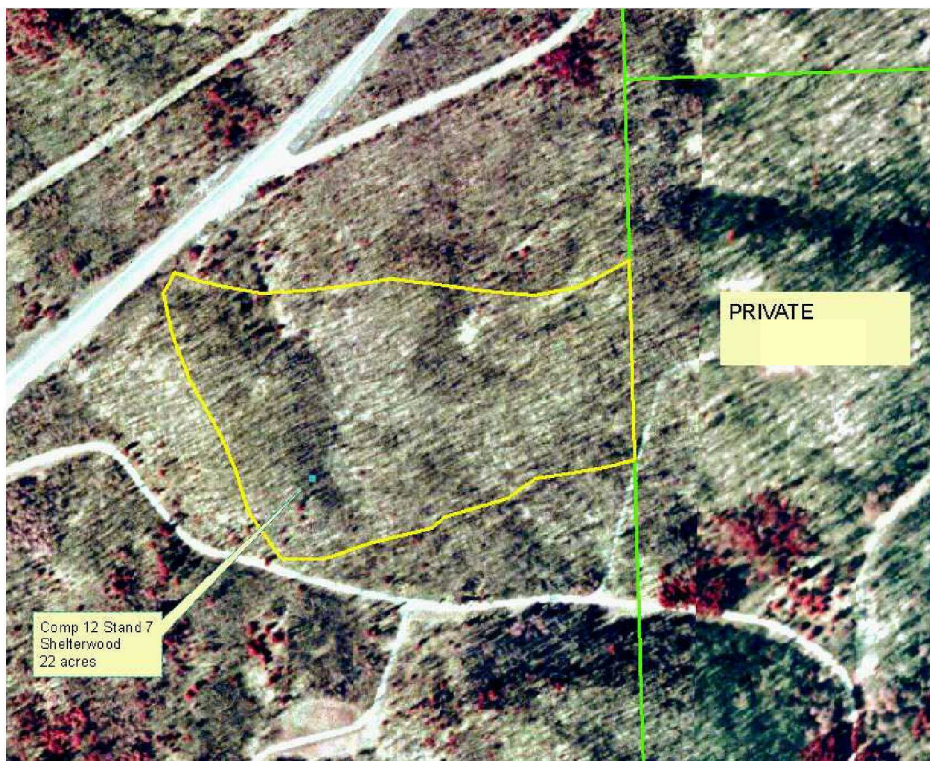
- Miris Corners
- County Gravel Roads
- - - Poor Dirt Roads
- Gas Lines
- Power and Gas Lines
- Powerlines
- - - Trails
- Water Features
- ✕ Gates
- ORV Trails
- Snowmobile Trails
- Dams
- Gas Wells
- ▭ Stand Boundary
- 016 - Planting
- 026 - Opening Maintenance
- 100 - Final Harvest
- 300 - Shelterwood - seed
- 400 - Thinning
- 700 - Shelterwood - prep



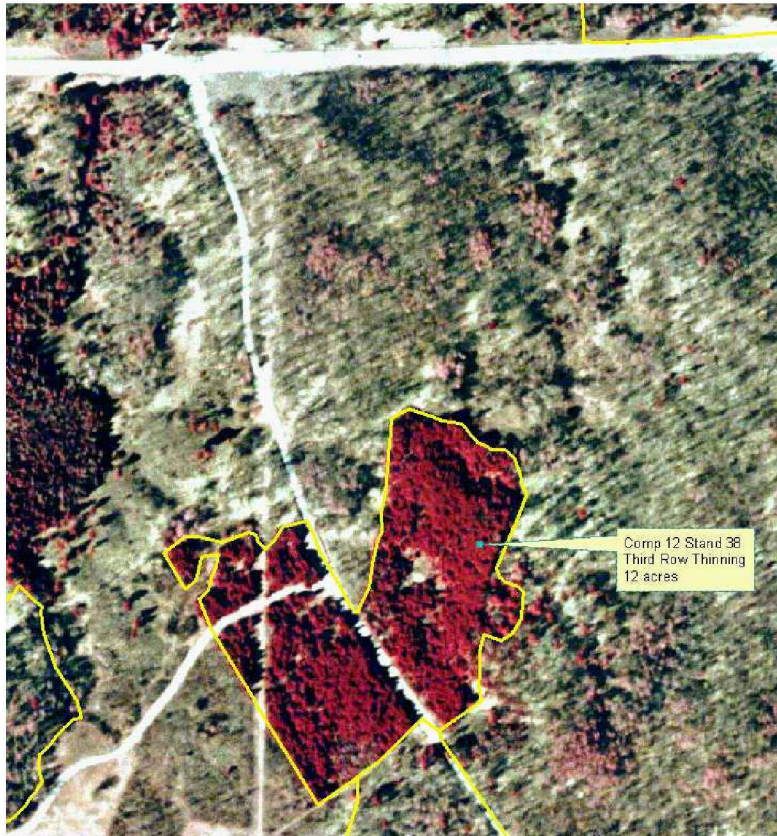
Maps not to scale. Refer to compartment map for scale and locations.



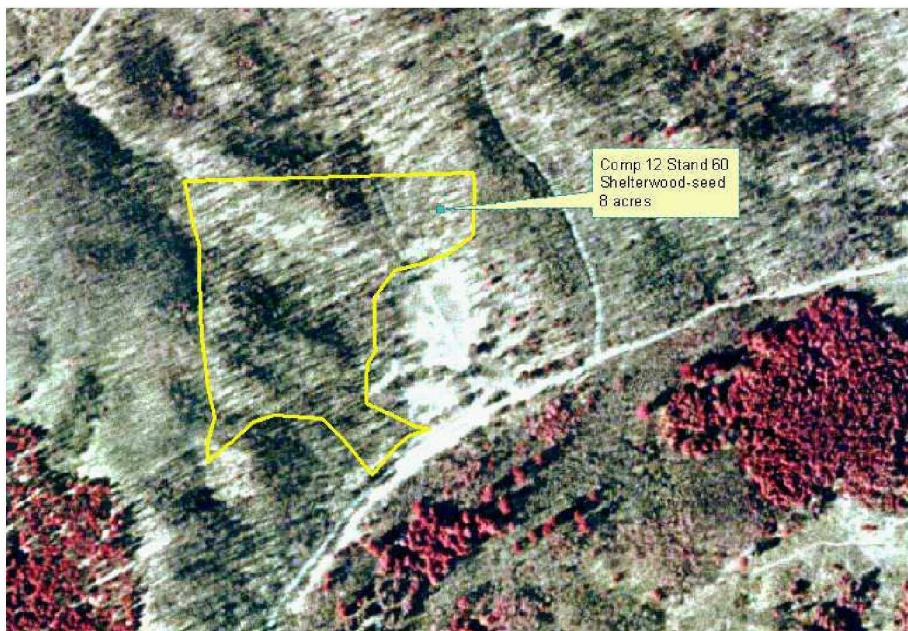
Stands 10 and 206 - all lines in red. Note with stand 10 that there are additional stands to the south that will be marked by staff. Yellow lines for those stands are also shown on this map.



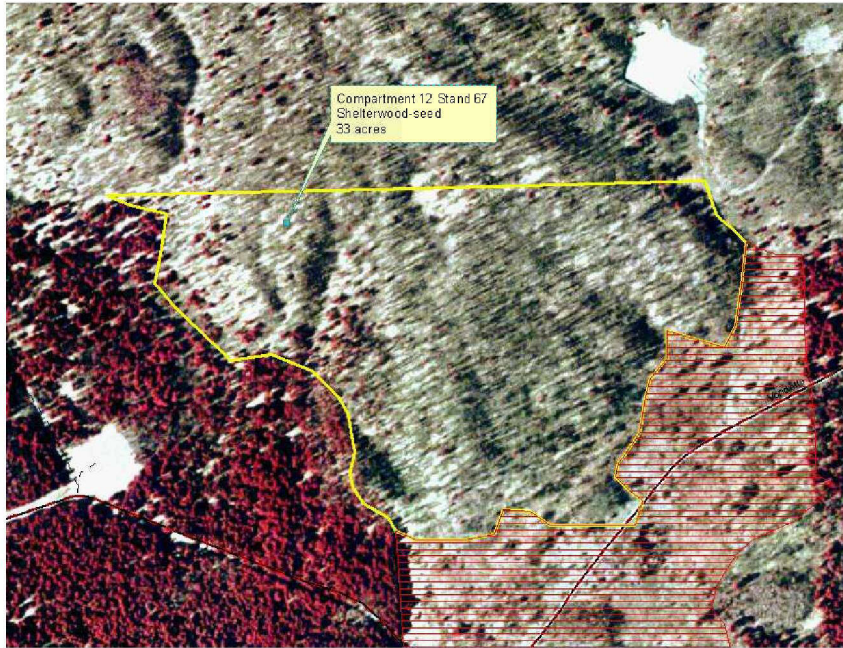
Stand 7 – eastern boundary should be blue (along private) and the rest in red.



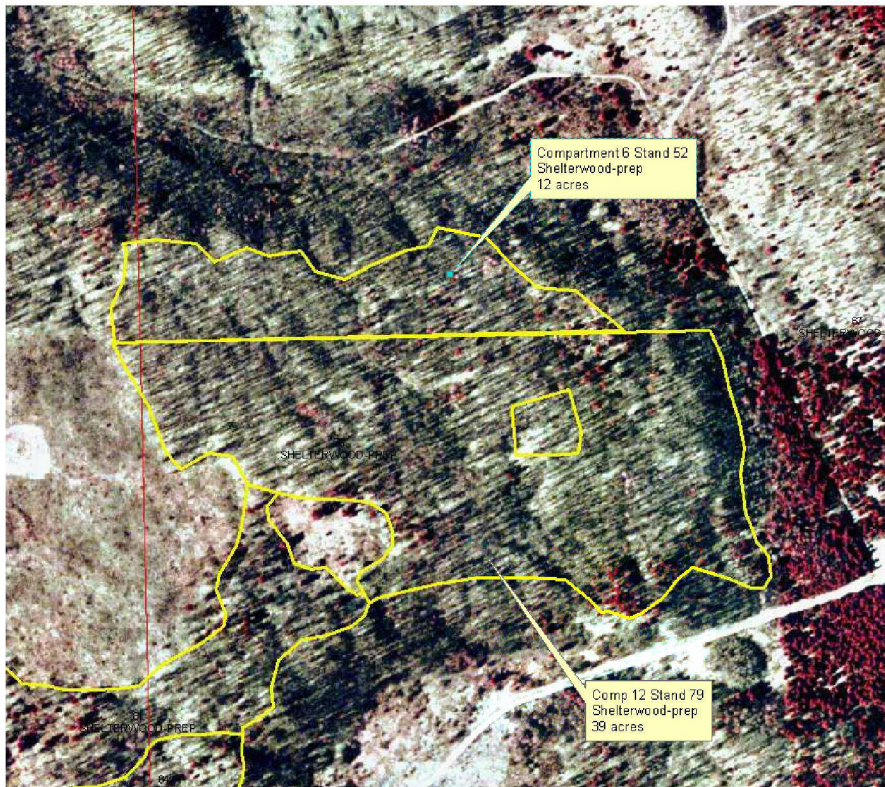
Stand 38 – red boundaries



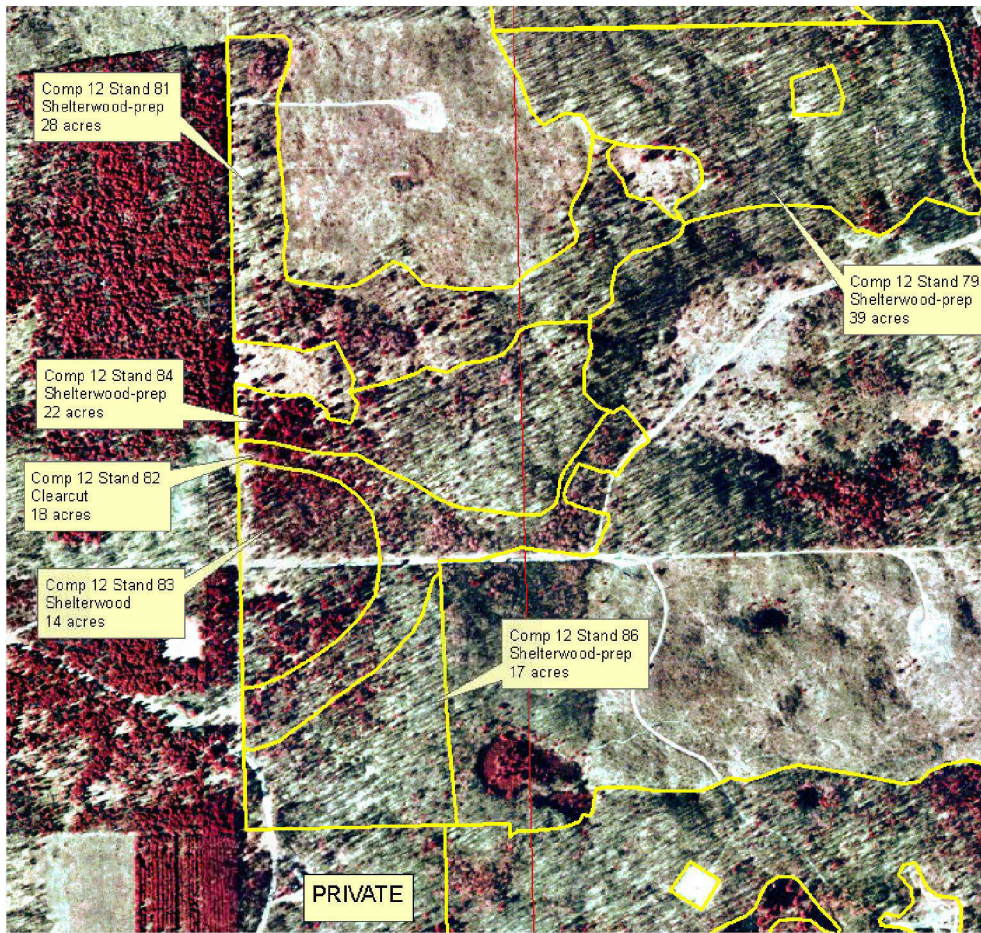
Stand 60 – all boundaries in red



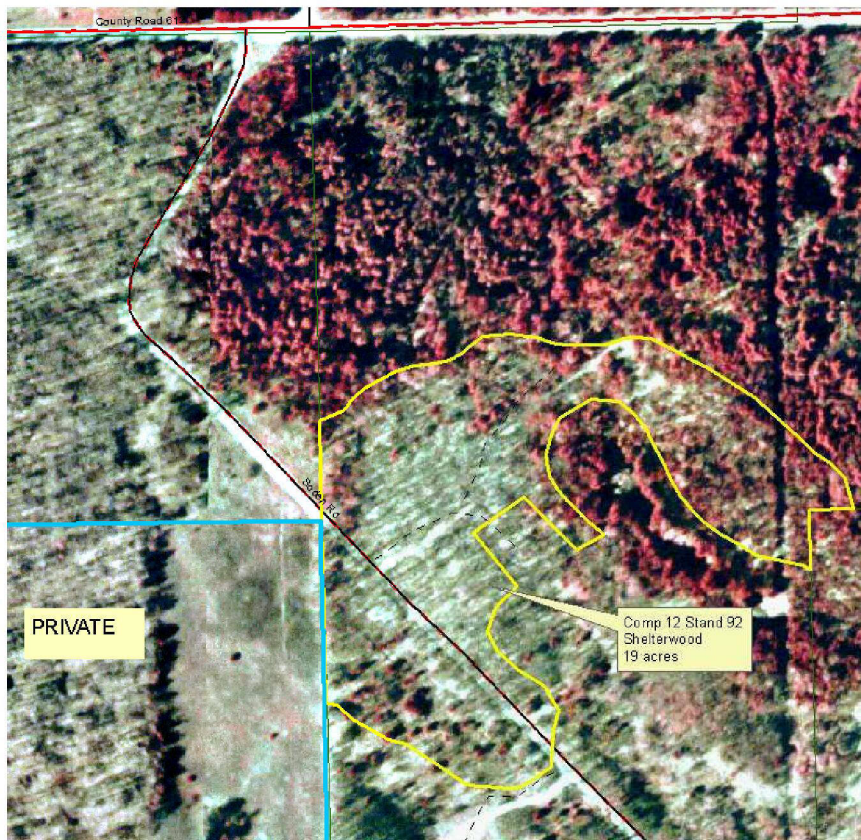
Stand 67 – all boundaries in red



Stand 79 and 52 – all boundaries in red.



Stands 81, 82, 83, and 84 – paint boundaries in red. Stand 86 in red except southern boundary against private land in blue.



Stand 92 – boundaries in red, except the part of the western boundary that is against private in blue

Stand 144 – boundary in red.

