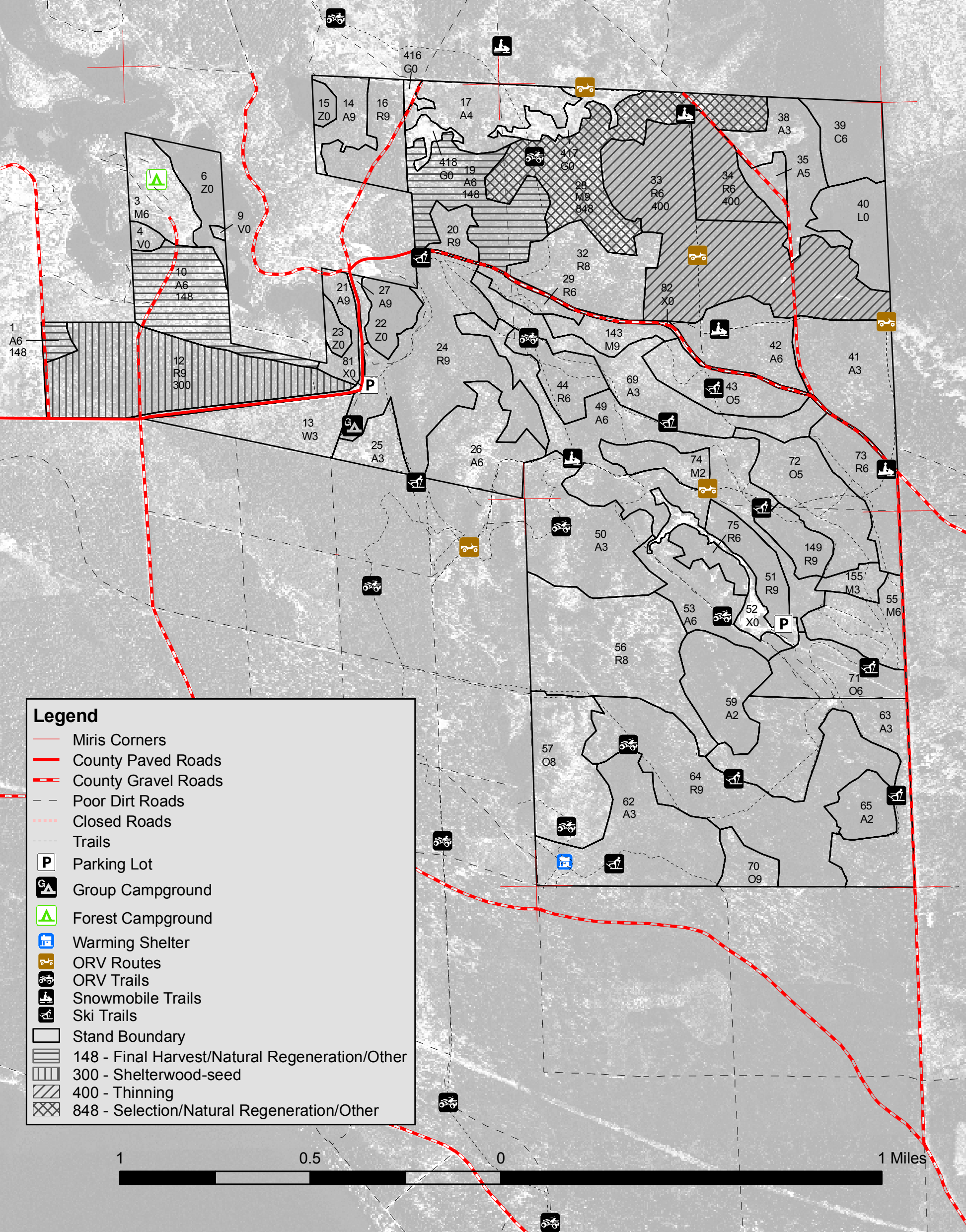
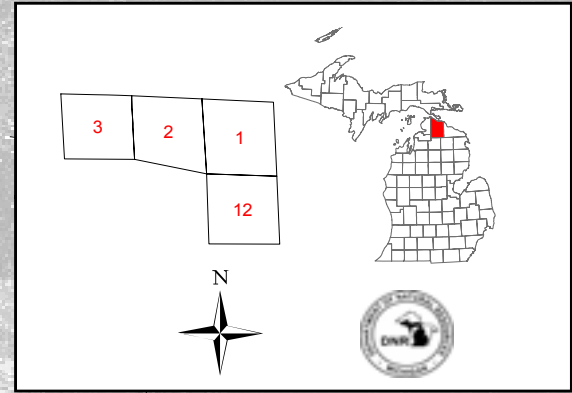


Field Map

Compartment 175
 T36N, R1E, Sec. 1-3, 12
 County: Cheboygan
 Unit: Atlanta
 YOE: 2009
 Acres: 1,806 GIS Calculated
 Stand Examiner: Richard Barber
 Map Revised: 2/29/2009
 Map Phase: Post Review



Legend

- Miris Corners
- County Paved Roads
- County Gravel Roads
- Poor Dirt Roads
- Closed Roads
- Trails
- Parking Lot
- Group Campground
- Forest Campground
- Warming Shelter
- ORV Routes
- ORV Trails
- Snowmobile Trails
- Ski Trails
- Stand Boundary
- 148 - Final Harvest/Natural Regeneration/Other
- 300 - Shelterwood-seed
- 400 - Thinning
- 848 - Selection/Natural Regeneration/Other

