



TIMBER SALE MAP

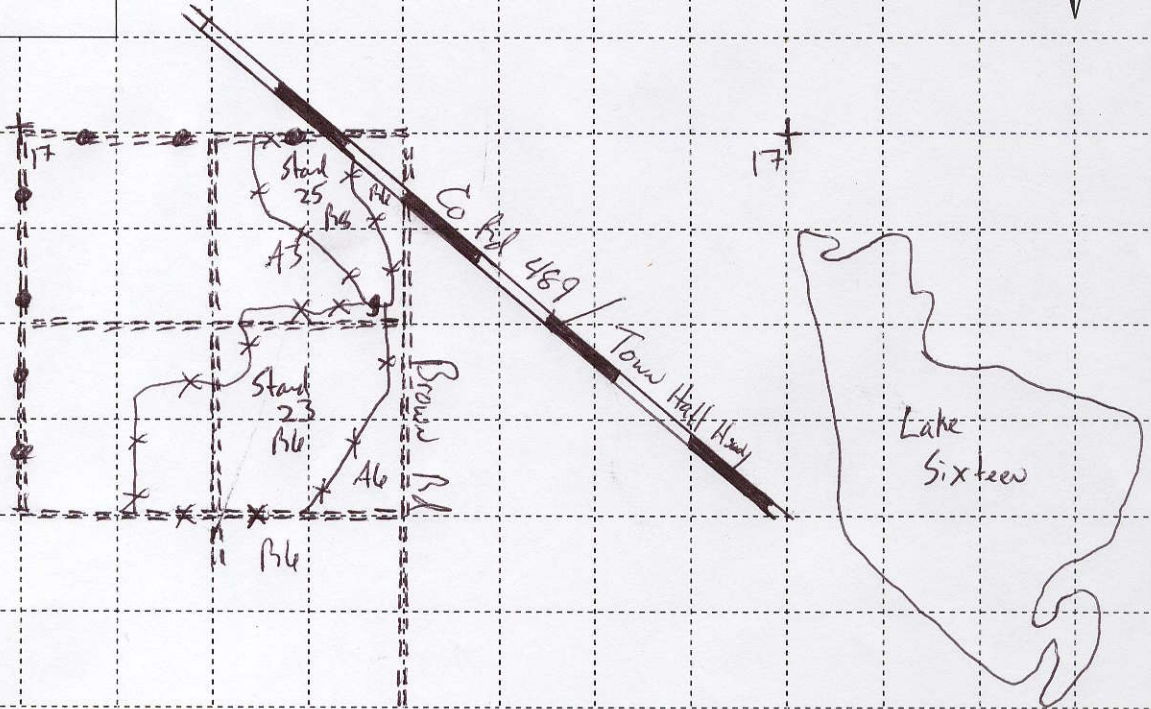
This information provided by authority of Part 525 of Act 451, PA 1994, as amended.

Sale Number	Year
NA	2009

Forest Management Unit Atlanta	County Presque Isle	Mapped By C. Stevens	Date 10/28/08	Page 1	of 1
Township 36N	Range 02E	Section(s) and Subdivision(s) 17	Cruised By NA		
			Scale: 4 inch = 1 mile		

Cover Type				Density	
A = Aspen	G = Grass	O = Oak	U = Upland Brush	0 = Non Stocked	5 = Pole Timber Medium
B = Paper Birch	H = Hemlock	P = Lowland Poplar	V = Bog or Marsh	1 = Seedling Sapling Poor	6 = Pole Timber Well
C = Cedar	J = Jack Pine	Q = Mixed Swamp Cnfr	W = White Pine	2 = Seedling Sapling Medium	7 = Saw Timber Poor
D = Treed Bog	L = Lowland Brush	R = Red Pine	X = Non Stocked	3 = Seedling Sapling Well	8 = Saw Timber Medium
E = Swamp Hdwoods	M = Mpl, Bch, Brch	S = Black Spruce	Z = Water	4 = Pole Timber Poor	9 = Saw Timber Well
F = Spruce Fir	N = Marsh	T = Tamarack			

Compartment 156 RPP
Approx. 47 acres
Approx Paint Color &
Location



Legend

- Sale Boundary: (Red Paint)
- Private Boundary: (Blue Paint)
- Unit Boundary: (Green Paint)
- County Road:
- Two-Track:
- ORV Trail:

Comp: 156
 Stands: 23 & 25