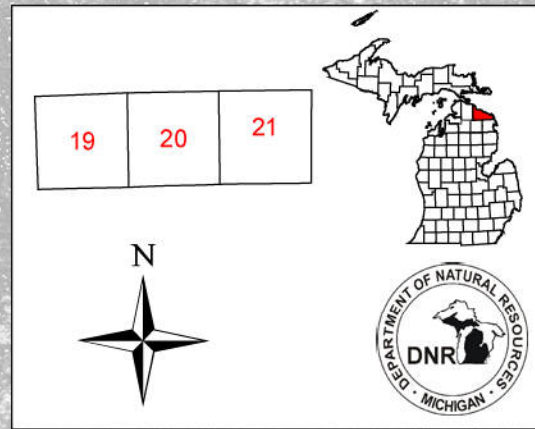


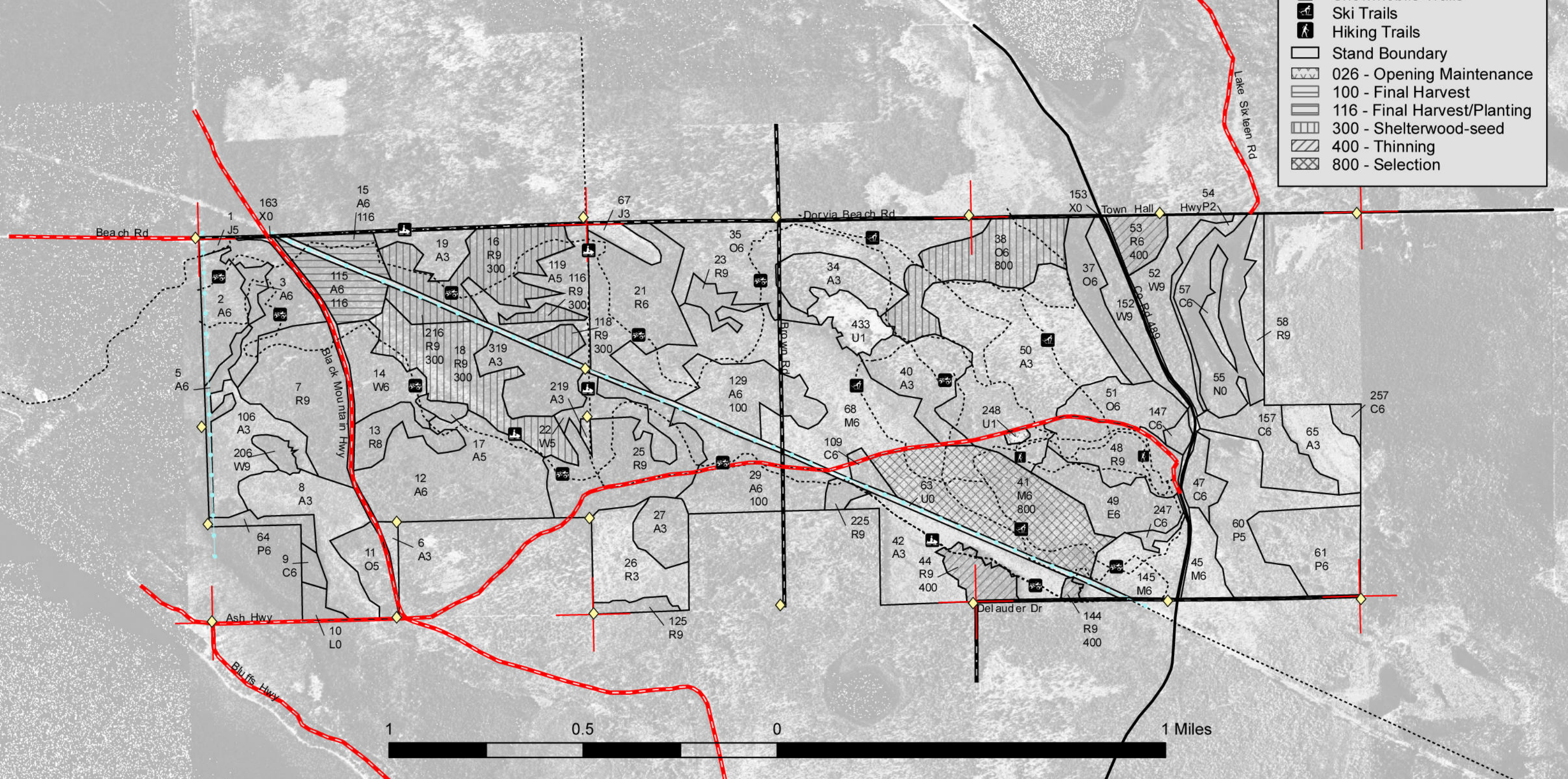
Compartment 157
 T36N, R02E, Sec. 19, 20, 21
 County: Presque Isle
 Unit: Atlanta
 YOY: 2008
 Acres: 1,621 GIS Calculated
 Stand Examiner: Timothy Paulus
 Map Revised: 4/13/2007
 Map Phase: Post-review

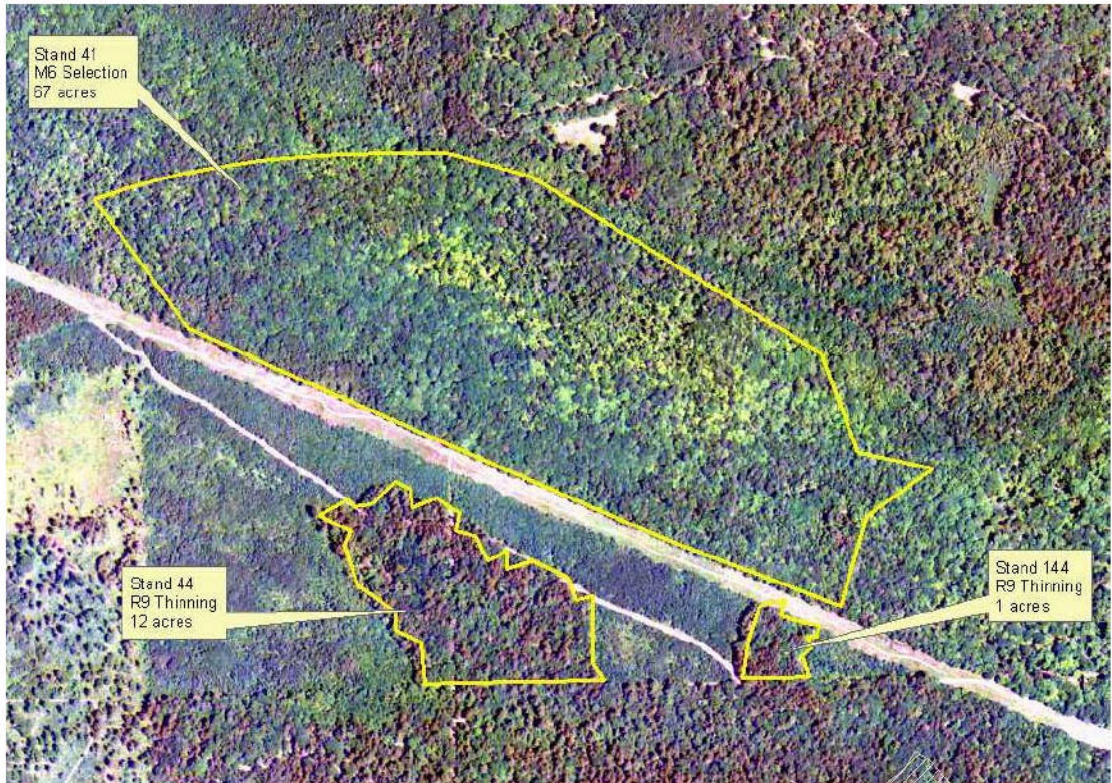


Field Map

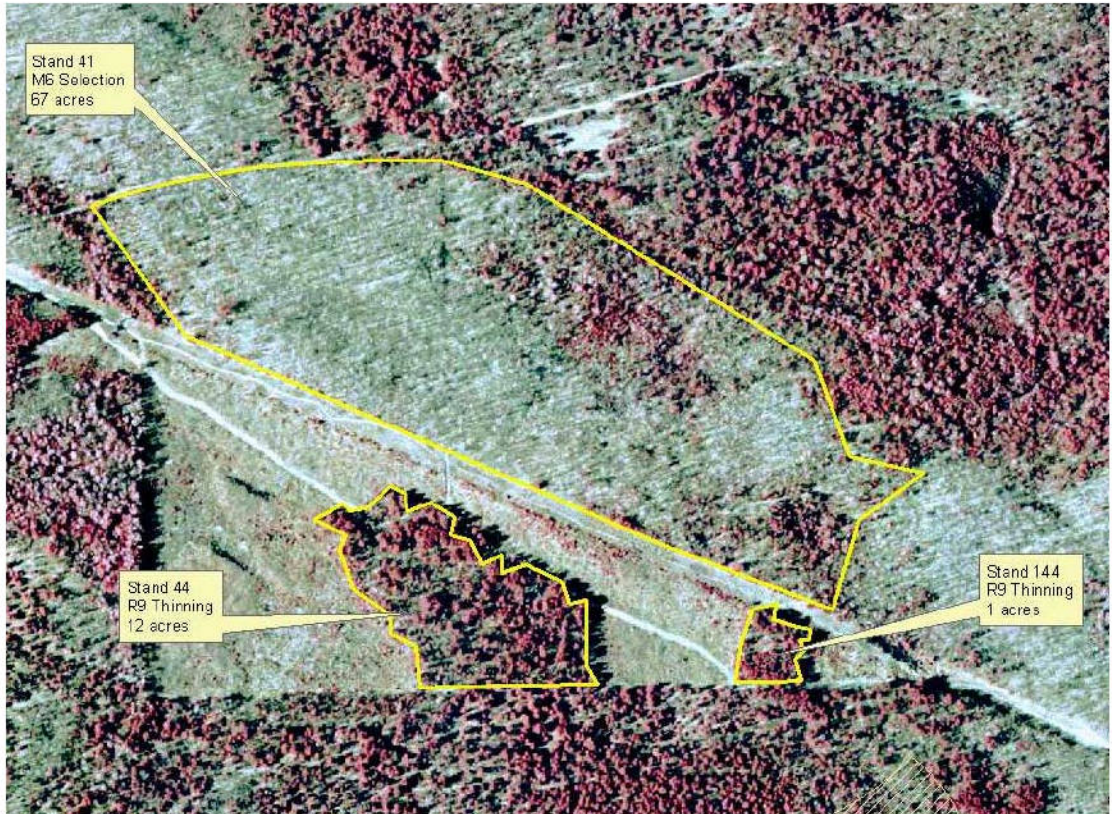
Legend

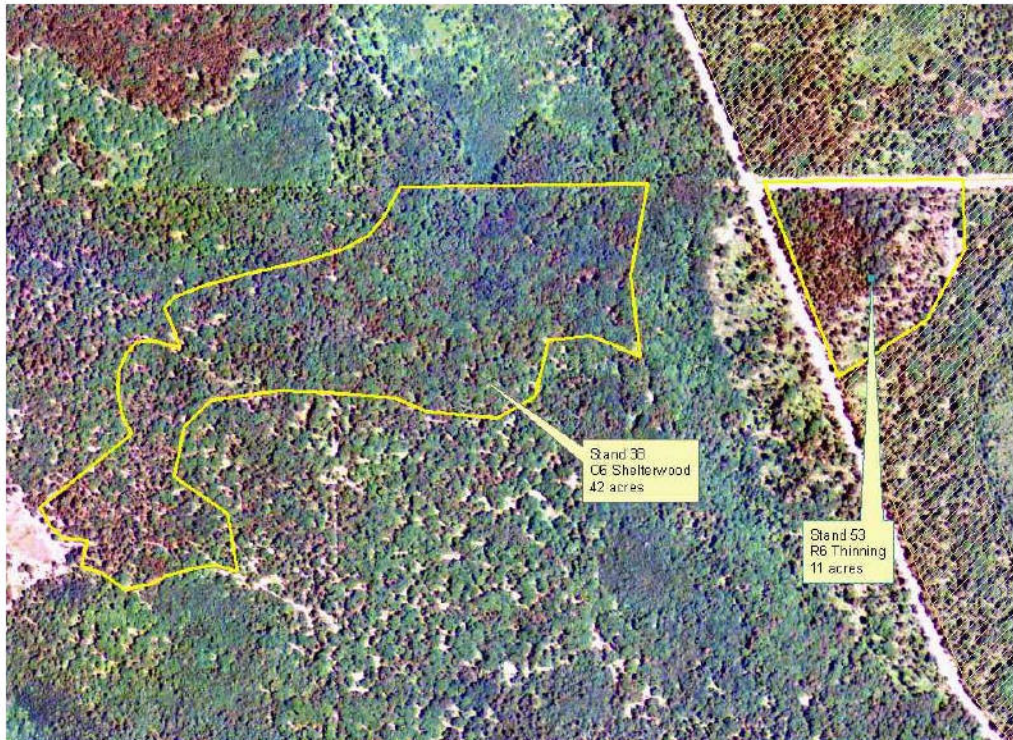
- RLS Corners
- Miris Corners
- County Gravel
- Paved Roads
- Gravel Roads
- Powerlines
- Trails
- ORV Trails
- Snowmobile Trails
- Ski Trails
- Hiking Trails
- Stand Boundary
- 026 - Opening Maintenance
- 100 - Final Harvest
- 116 - Final Harvest/Planting
- 300 - Shelterwood-seed
- 400 - Thinning
- 800 - Selection



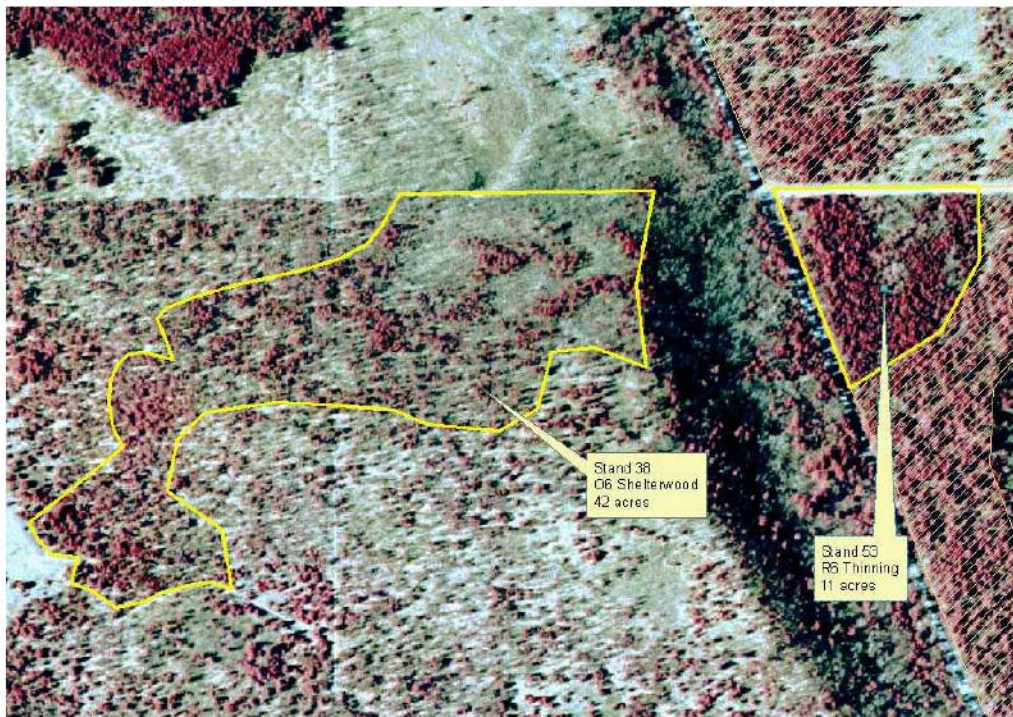


Stands 41, 44 and 144 – all red boundaries. 2005 NAIP above; 1998 DOQQ below.

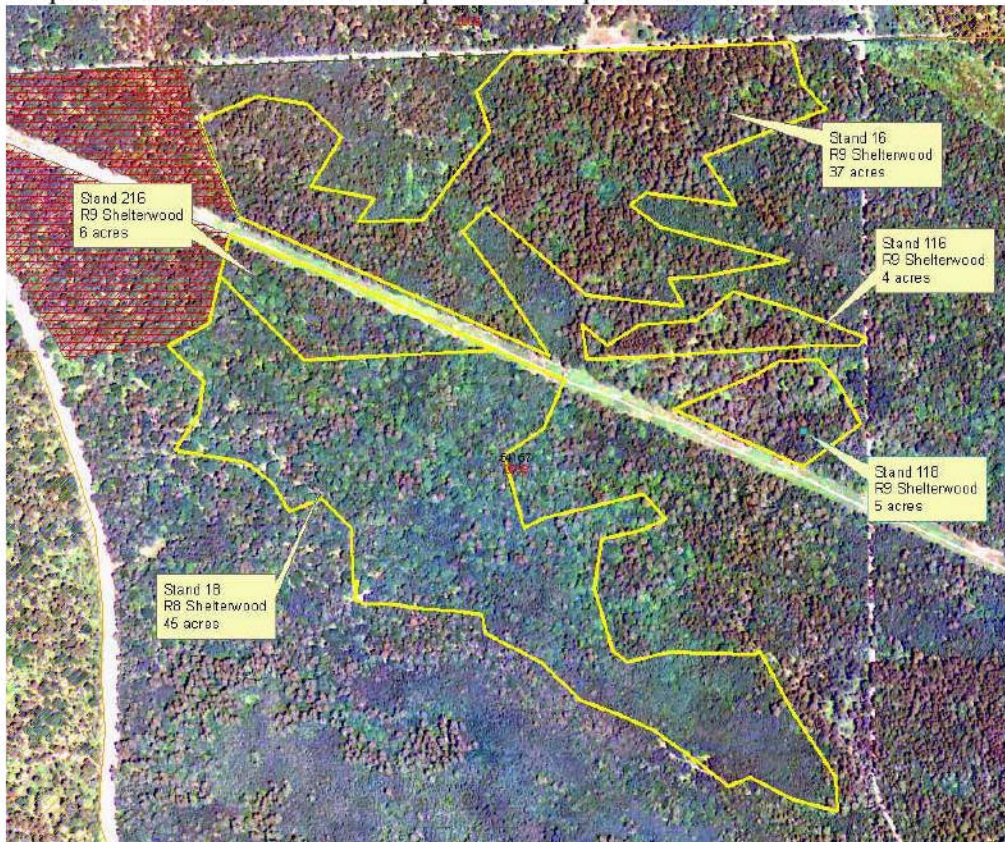




Stands 38 and 53 – all red boundaries. 2005 NAIP above; 1998 DOQQ below.



Maps not to scale. Refer to compartment map for scale and locations.



Stands 16, 116, 216, 18, 118 – all boundaries in red. 2005 NAIP imagery above; 1998 DOQQ below.

