

Compartment 122
 T24N, R07W, Sec. 1, 2, 11, 12
 County: Missaukee
 Unit: Cadillac
 YOE: 2009
 Acres: 2,063 GIS Calculated
 Stand Examiner: Dave Fisher
 Map Revised: 8/21/2007
 Map Phase: Pre-Review

Field Map

Stand # 23 Stocking Density
 (A)(412)0 - 7
 Ol Level 3
 Code Level 4
 Cover Type Code

Legend

- Miris Corners
- Paved Road
- - - Poor Dirt Road
- - - Intermittent Stream/Drain
- Stream
- Trails
- Minerals
- ORV Trails
- ORV Routes
- Snowmobile Trails
- Stands
- Clearcut
- Clearcut with Reserves
- Single Tree Selection
- Shelterwood
- Forest Stands
- 411 - Northern Hardwood
- 412 - Oak Types
- 413 - Aspen Types
- 419 - Mixed Upland Deciduous
- 422 - Natural Pines
- 612 - Lowland Coniferous Forest
- Non-Forest Stands
- 310 - Herbaceous Openland
- 320 - Upland Shrub
- 330 - Low-Density Trees
- 500 - Water

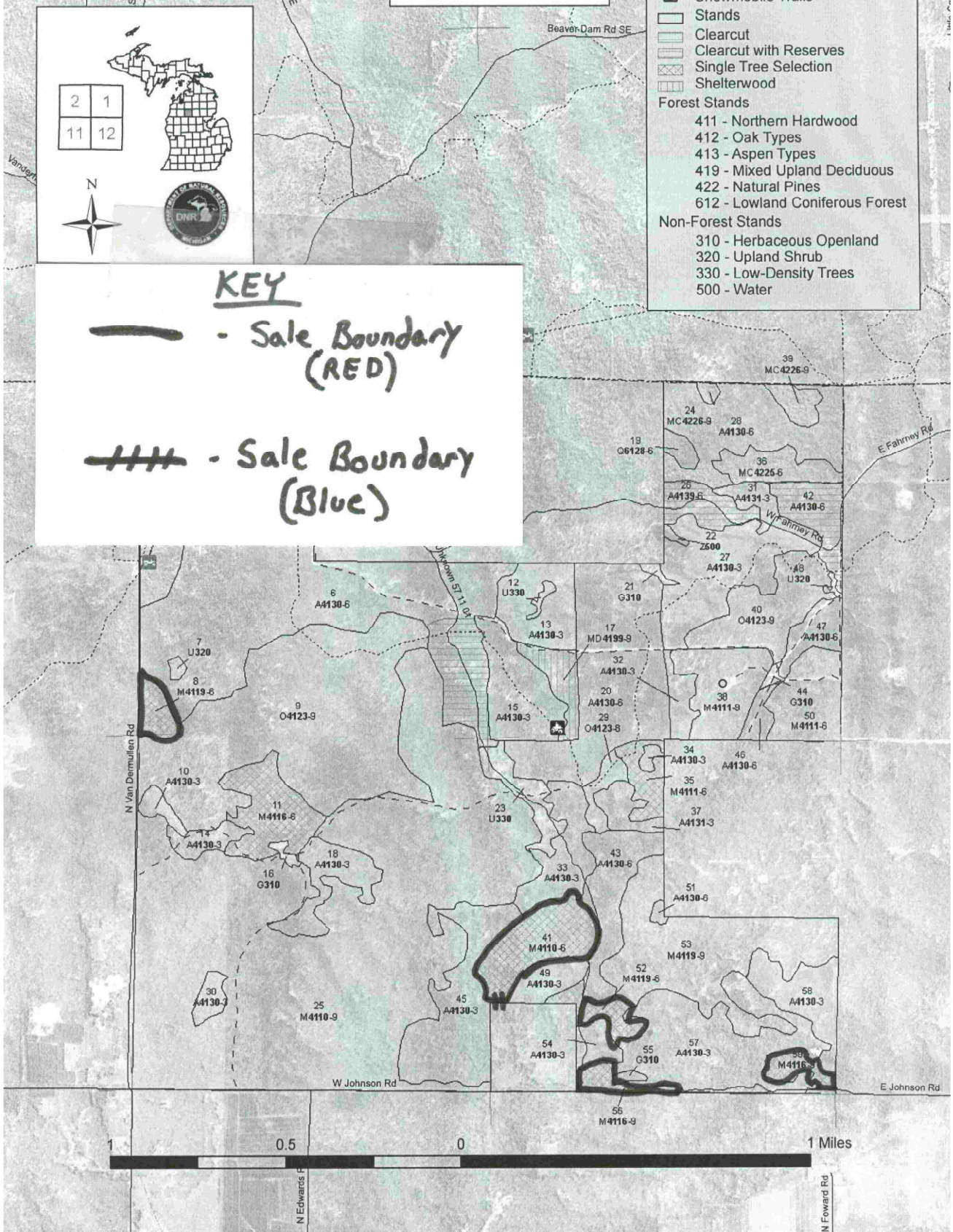
2	1
11	12



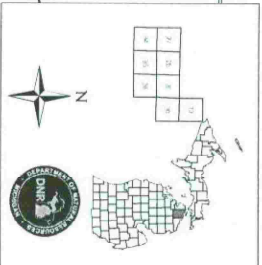
KEY

— - Sale Boundary (RED)

— - - Sale Boundary (Blue)

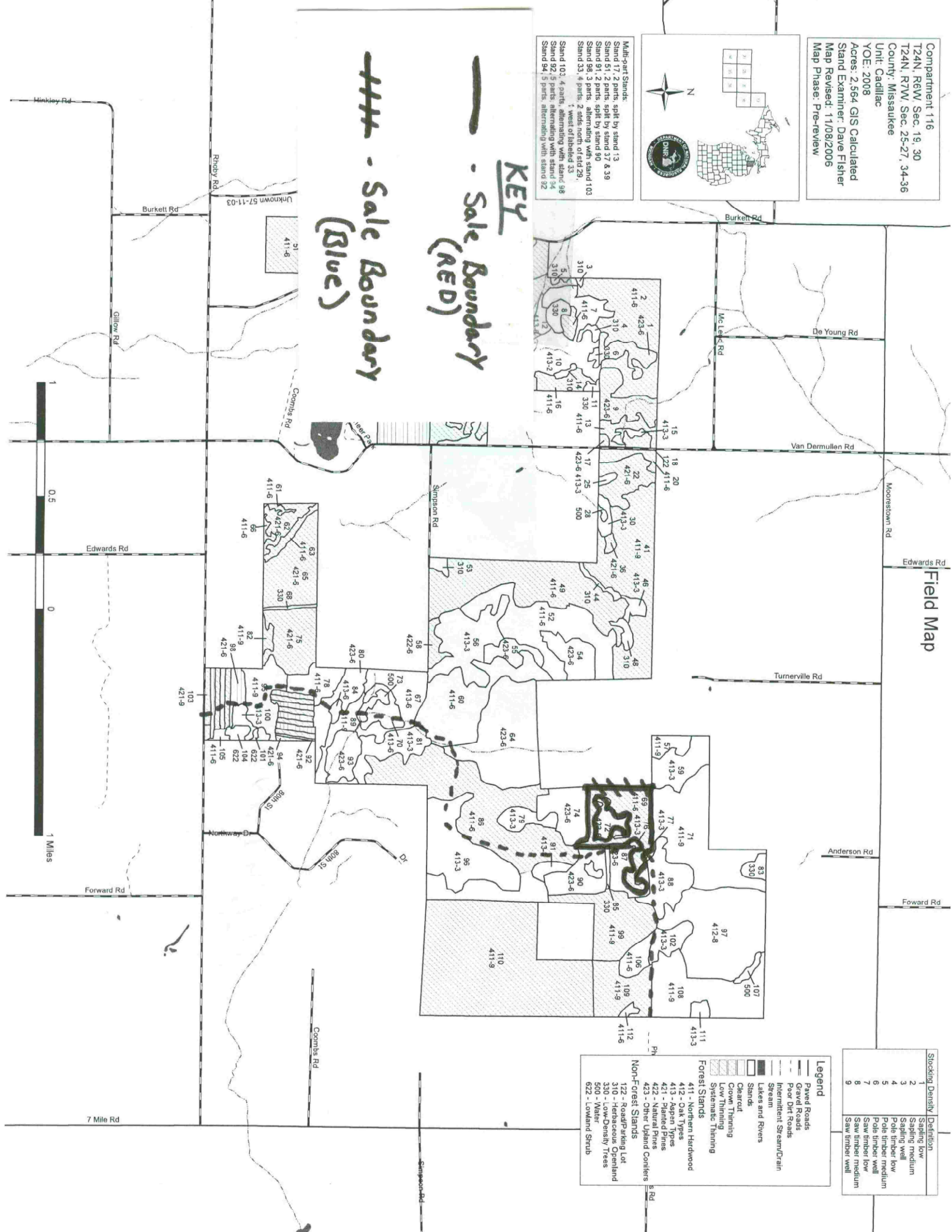


Compartment 116
 T24N, R7W, Sec. 19, 30
 T24N, R7W, Sec. 25-27, 34-36
 County: Missaukee
 Unit: Cadillac
 YO#: 2008
 Acres: 2,564 GIS Calculated
 Stand Examiner: Dave Fisher
 Map Revised: 11/06/2006
 Map Phase: Pre-review



Multi-part Stands:
 Stand 17, 2 parts, split by stand 13
 Stand 51, 2 parts, split by stand 37 & 39
 Stand 91, 2 parts, split by stand 90
 Stand 98, 3 parts, alternating with stand 103
 Stand 33, 4 parts, 2 sides north of std 29,
 1 west of labeled 33
 Stand 103, 4 parts, alternating with stand 98
 Stand 92, 3 parts, alternating with stand 94
 Stand 94, 3 parts, alternating with stand 92

KEY
 - Sale Boundary (RED)
 - Sale Boundary (Blue)



Stocking Density	Definition
1	Sapling low
2	Sapling medium
3	Sapling well
4	Pole timber low
5	Pole timber medium
6	Pole timber well
7	Saw timber low
8	Saw timber medium
9	Saw timber well

Legend	
	Paved Roads
	Gravel Roads
	Poor Dirt Roads
	Intersecting Stream/Drain
	Stream
	Lakes and Rivers
	Stands
	Clearcut
	Low Intensity Thinning
	Systematic Thinning
Forest Stands	
	411 - Northern Hardwood
	412 - Oak Types
	413 - Spruce/Fir
	421 - Poplar/Aspen
	422 - Natural Pines
	423 - Other Upland Conifers
Non-Forest Stands	
	122 - Road/Gravel Lot
	310 - Heavily Openland
	330 - Low Density Trees
	500 - Water
	622 - Lowland Shrub



Michigan Department of Natural Resources – Forest, Mineral & Fire Management
TIMBER SALE MAP

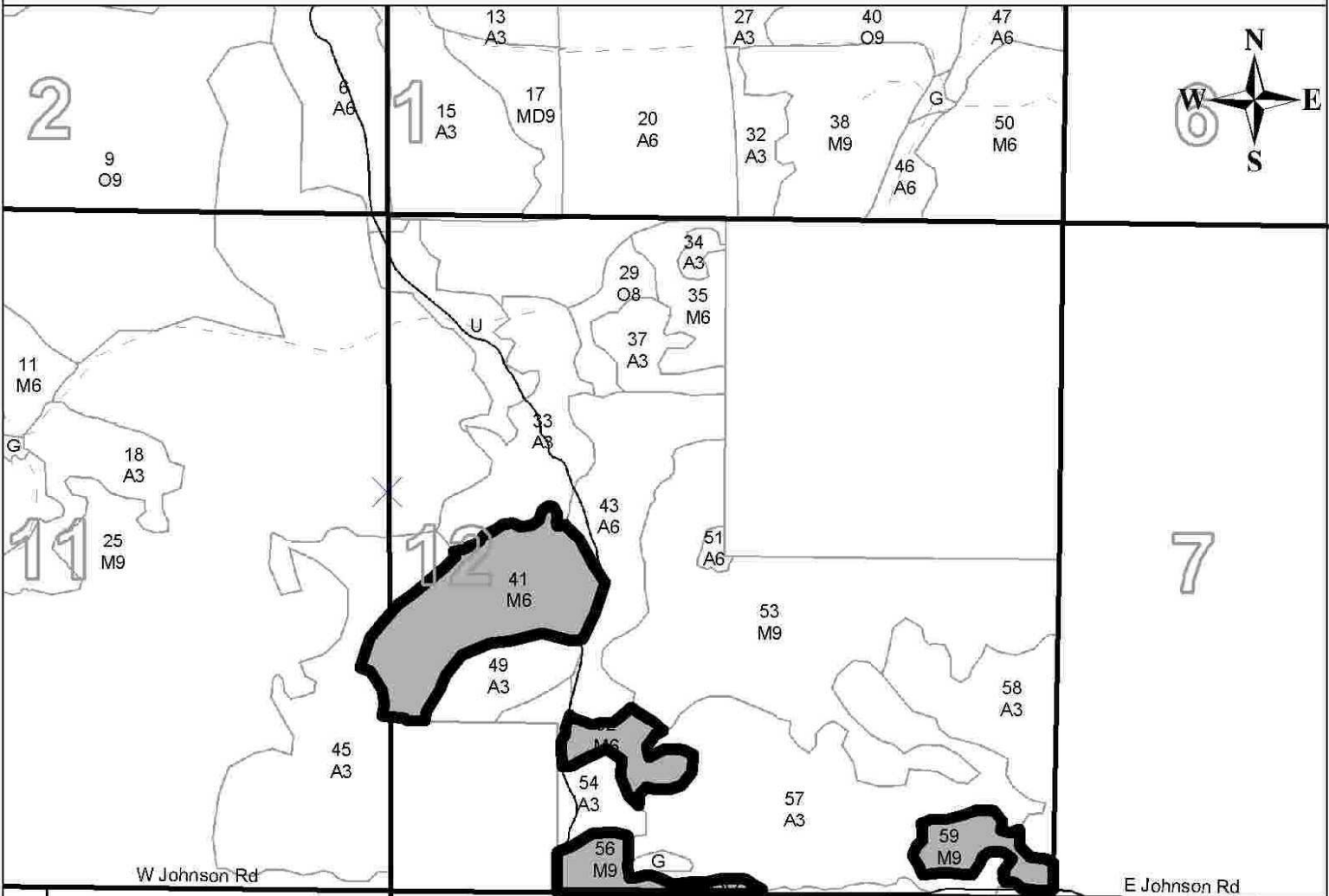
This information is provided by authority of Part 525 of Act 451, PA 1994, as amended.

SAI F NUMBER	YEAR
63-019-09-01	2009
DATE	PAGE OF
01/12/2009	1 3

FOREST MANAGEMENT UNIT Cadillac FMU	COUNTY Missaukee	MAPPED BY Dave Fisher
TOWNSHIP 24N		CRUISED BY

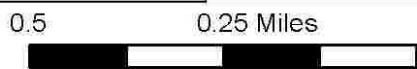
RANGE 07W	SECTION(S) AND SUBDIVISION(S) 12	SCALE 1:15,840
--------------	-------------------------------------	-------------------

Cover Type				Density	
A = Aspen	H = Hemlock	P = Lowland Poplar	V = Bog or Marsh	0 = Non Stocked	5 = Pole Timber Medium
B = Paper Birch	J = Jack Pine	Q = Mixed Swamp Cnfr	W = White Pine	1 = Seedling Sapling Poor	6 = Pole Timber Well
C = Cedar	L = Lowland Brush	R = Red Pine	X = Non Stocked	2 = Seedling Sapling Medium	7 = Saw Timber Poor
E = Swamp Hdwoods	M = Mpl. Bch, Brch	S = Black Spruce	Z = Water	3 = Seedling Sapling Well	8 = Saw Timber Medium
F = Spruce Fir	N = Marsh	T = Tamarack		4 = Pole Timber Poor	9 = Saw Timber Well
G = Grass	O = Oak	U = Upland Brush			



Legend

- Highway
- Paved Road
- Gravel or Good Dirt Road
- Poor Dirt Road
- Closed Road
- Contract Area
- Sections





Michigan Department of Natural Resources – Forest, Mineral & Fire Management
TIMBER SALE MAP

This information is provided by authority of Part 525 of Act 451, PA 1994, as amended.

SAI F NUMBER	YEAR
63-019-09-01	2009
DATE	PAGE OF
01/12/2009	2 3

FOREST MANAGEMENT UNIT Cadillac FMU	COUNTY Missaukee	MAPPED BY Dave Fisher
TOWNSHIP 24N	RANGE 07W	SECTION(S) AND SUBDIVISION(S) 2
		CRUISED BY

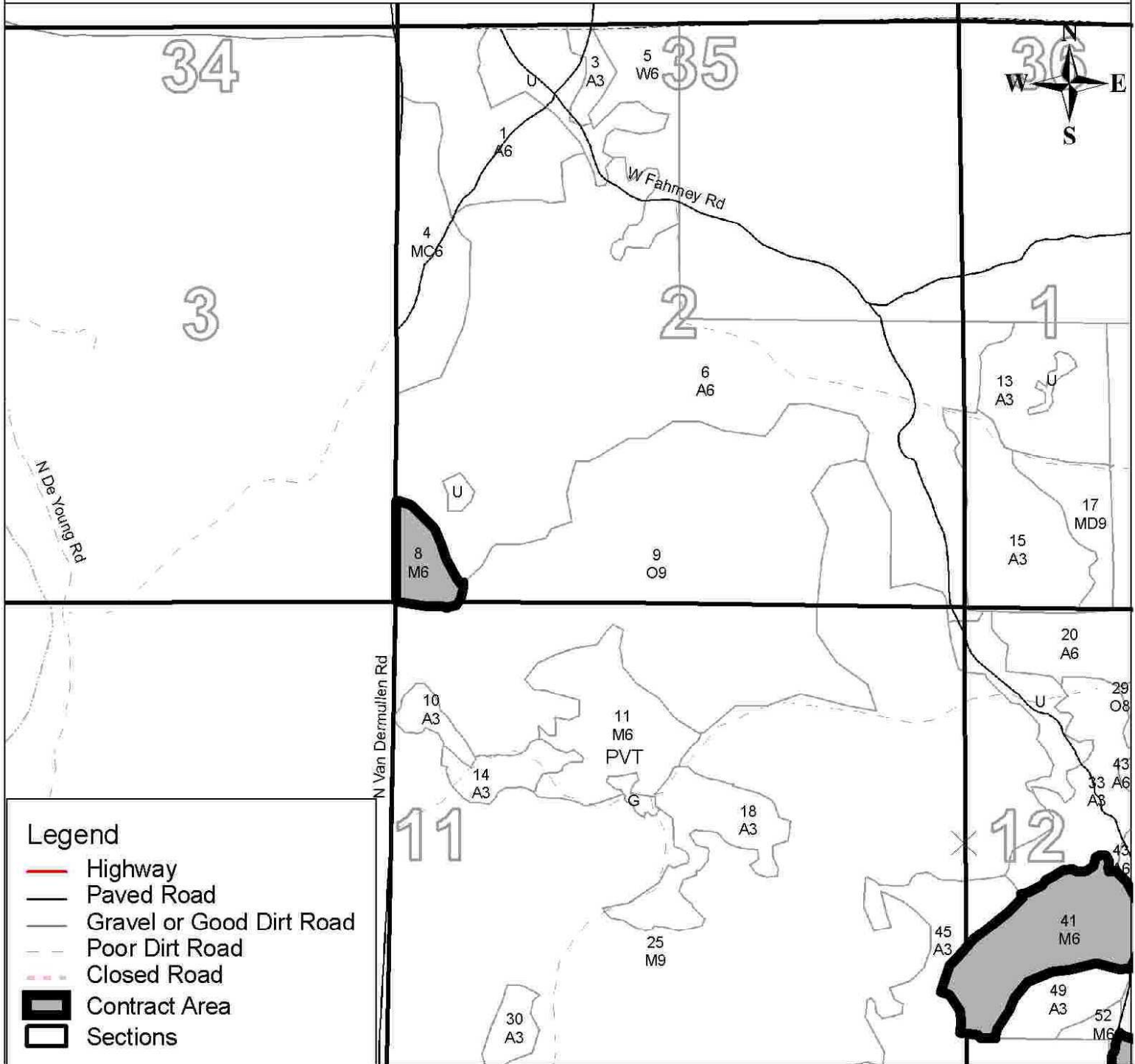
1:15,840

Cover Type

A = Aspen	H = Hemlock	P = Lowland Poplar	V = Bog or Marsh
B = Paper Birch	J = Jack Pine	Q = Mixed Swamp Cnfr	W = White Pine
C = Cedar	L = Lowland Brush	R = Red Pine	X = Non Stocked
E = Swamp Hdwoods	M = Mpl. Bch, Brch	S = Black Spruce	Z = Water
F = Spruce Fir	N = Marsh	T = Tamarack	
G = Grass	O = Oak	U = Upland Brush	

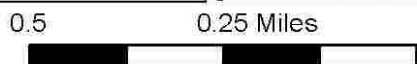
Density

0 = Non Stocked	5 = Pole Timber Medium
1 = Seedling Sapling Poor	6 = Pole Timber Well
2 = Seedling Sapling Medium	7 = Saw Timber Poor
3 = Seedling Sapling Well	8 = Saw Timber Medium
4 = Pole Timber Poor	9 = Saw Timber Well



Legend

- Highway
- Paved Road
- Gravel or Good Dirt Road
- Poor Dirt Road
- Closed Road
- Contract Area
- Sections





Michigan Department of Natural Resources – Forest, Mineral & Fire Management
TIMBER SALE MAP

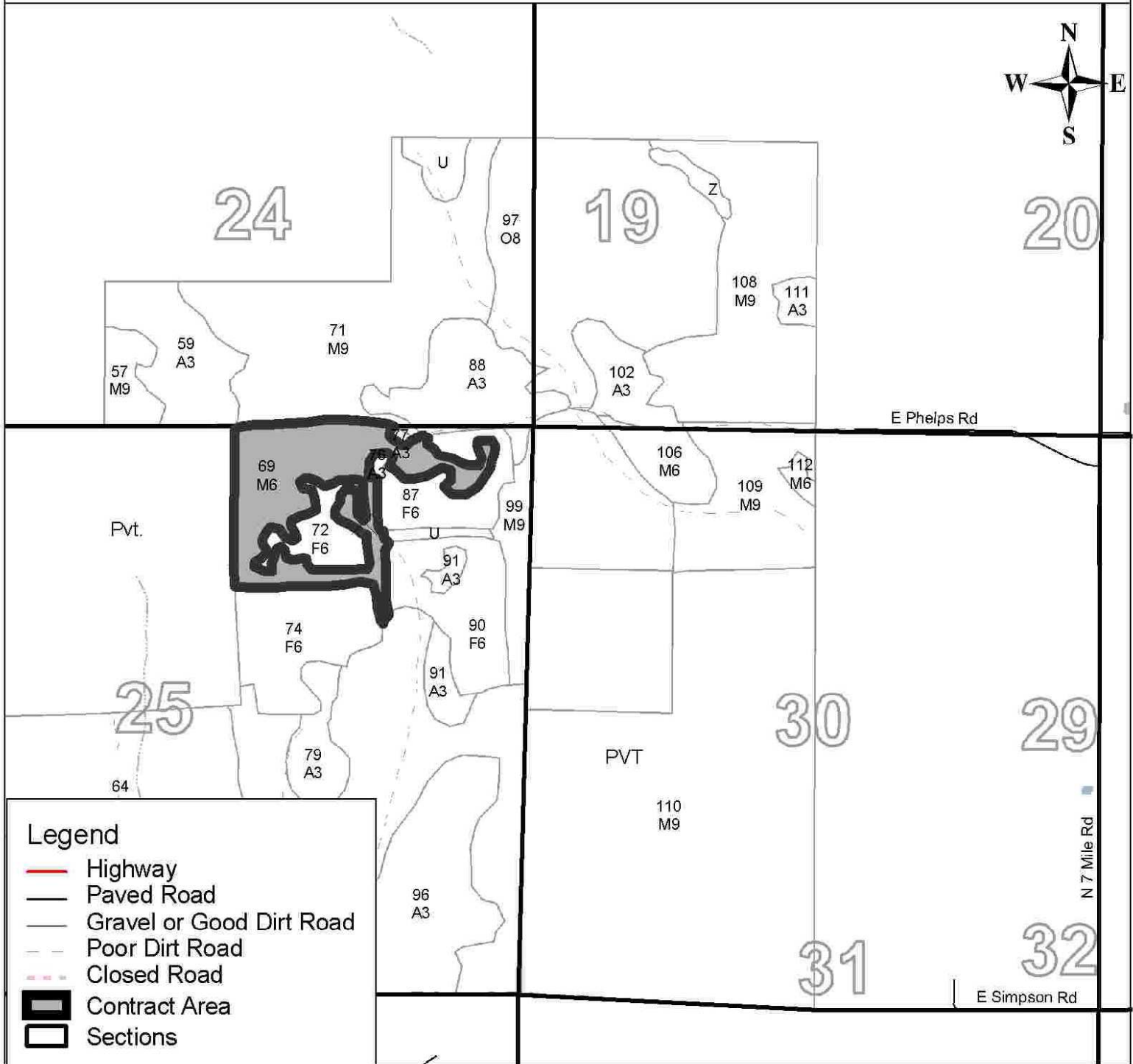
This information is provided by authority of Part 525 of Act 451, PA 1994, as amended.

SAI F NUMBER	YEAR
63-019-09-01	2009
DATE	PAGE OF
01/12/2009	3 3

FOREST MANAGEMENT UNIT Cadillac FMU	COUNTY Missaukee	MAPPED BY Dave Fisher
TOWNSHIP 24N	RANGE 07W	SECTION(S) AND SUBDIVISION(S) 25
		CRUISED BY

1:15,840

Cover Type				Density	
A = Aspen	H = Hemlock	P = Lowland Poplar	V = Bog or Marsh	0 = Non Stocked	5 = Pole Timber Medium
B = Paper Birch	J = Jack Pine	Q = Mixed Swamp Cnfr	W = White Pine	1 = Seedling Sapling Poor	6 = Pole Timber Well
C = Cedar	L = Lowland Brush	R = Red Pine	X = Non Stocked	2 = Seedling Sapling Medium	7 = Saw Timber Poor
E = Swamp Hdwoods	M = Mpl. Bch, Brch	S = Black Spruce	Z = Water	3 = Seedling Sapling Well	8 = Saw Timber Medium
F = Spruce Fir	N = Marsh	T = Tamarack		4 = Pole Timber Poor	9 = Saw Timber Well
G = Grass	O = Oak	U = Upland Brush			



0.5 0.25 Miles

