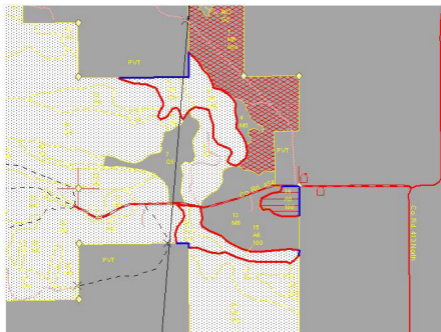


Contractor Work for Stands 5, 9, 14, 15 & 16

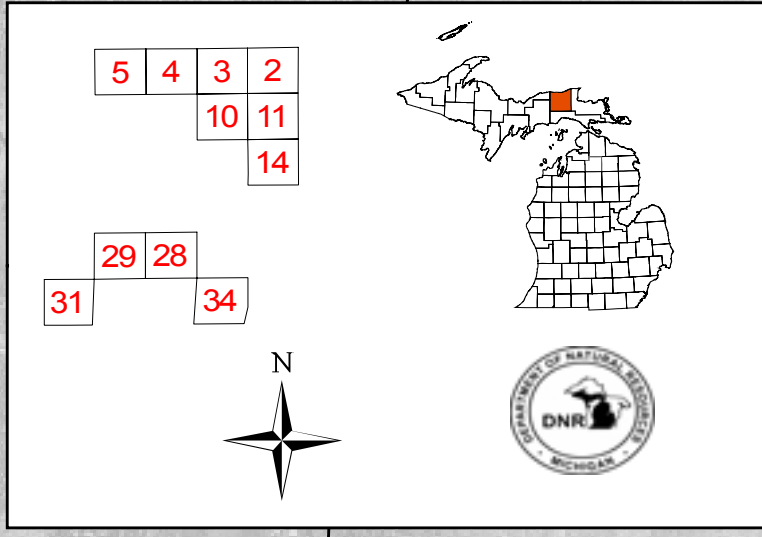


- Contractor blue line work.shp
- Contractor red line work.shp
- RLS Corner-DNRNew100_rls_corners.shp
- Mris CornerNew100_mris_corners.shp
- HighwaysNew100_highways.shp
- County Paved RoadNew100_co_paved_roads.shp
- County Gravel & Good Dirt RoadNew100_co_gravel_roads.shp
- Gravel RoadNew100_gravel_roads.shp
- Poor Dirt RoadNew100_poor_dirt.shp
- Closed RoadNew100_closed_roads.shp
- GatesNew100_gates.shp
- CabinsNew100_cabins.shp
- New100_deer_yard.shp
- New100_stand_boun.shp
- New100_stand_join.shp
- SCA - Special Conservation Area
- New100_stand_join.shp
- 100 - Final Harvest
- 600 - Delayed Removal
- 800 - Selection



Field Map

Compartment 100
 T45N, R12W, Sec. 2-5,10, 11, 14, 28, 29, 31, 34
 County: Luce
 Unit: Newberry
 YOE: 2009
 Acres: 2,850 GIS Calculated
 Stand Examiner: Keith Magnusson
 Map Revised: 2/14/2008
 Map Phase: Post Review



- Legend**
- ◇ RLS Corners
 - Miris Corners
 - Highways
 - County Paved Roads
 - County Gravel Roads
 - Gravel Roads
 - Poor Dirt Roads
 - Closed Roads
 - × Gates
 - Cabins
 - State Highway
 - Deer Yard
 - Stand Boundary
 - ▨ 100 - Final Harvest
 - ▩ 600 - Delayed Removal
 - ▧ 800 - Selection

