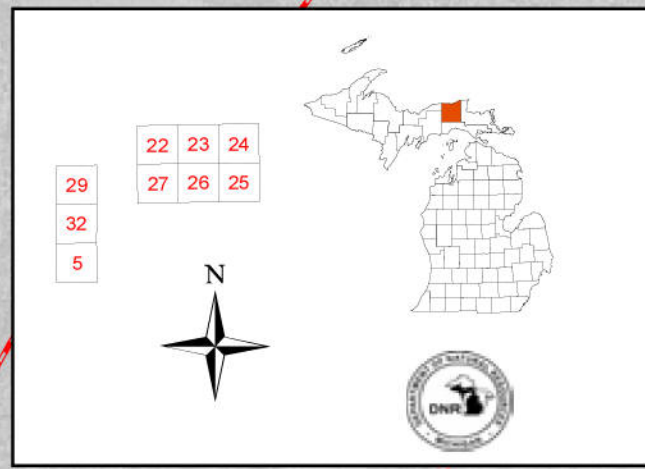
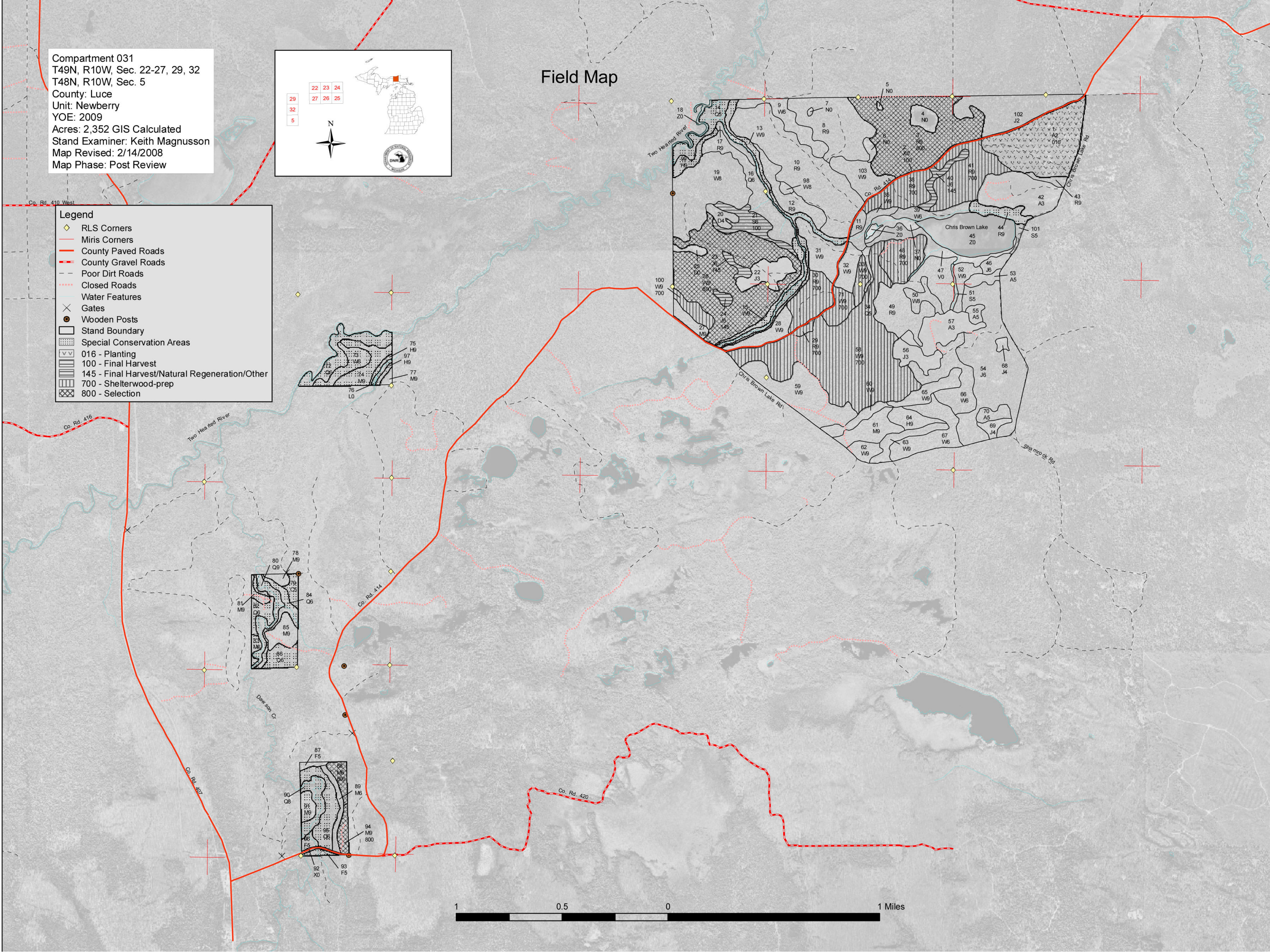
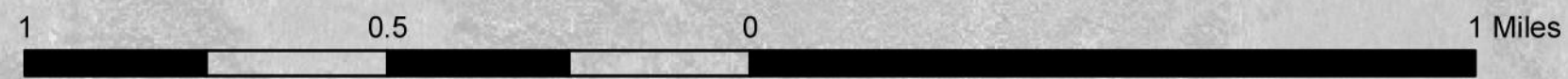
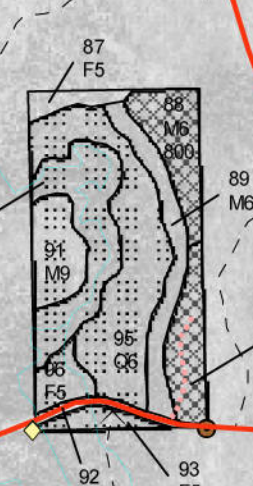
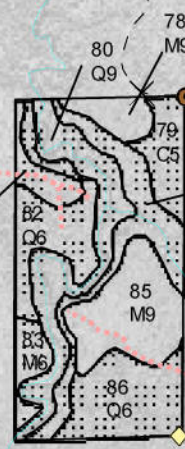
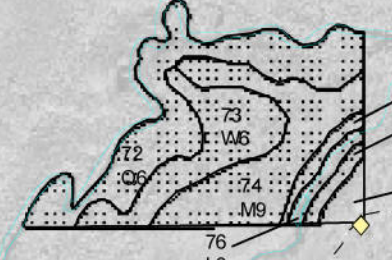


Compartment 031  
 T49N, R10W, Sec. 22-27, 29, 32  
 T48N, R10W, Sec. 5  
 County: Luce  
 Unit: Newberry  
 YOE: 2009  
 Acres: 2,352 GIS Calculated  
 Stand Examiner: Keith Magnusson  
 Map Revised: 2/14/2008  
 Map Phase: Post Review



### Field Map

- Legend**
- ◆ RLS Corners
  - Miris Corners
  - County Paved Roads
  - County Gravel Roads
  - - - Poor Dirt Roads
  - Closed Roads
  - Water Features
  - × Gates
  - Wooden Posts
  - Stand Boundary
  - ▨ Special Conservation Areas
  - ▧ 016 - Planting
  - ▩ 100 - Final Harvest
  - 145 - Final Harvest/Natural Regeneration/Other
  - 700 - Shelterwood-prep
  - ▬ 800 - Selection



# Compartment 31 Contractor Work

