



Michigan Department of Natural Resources -- Forest, Mineral & Fire Management
TIMBER SALE MAP

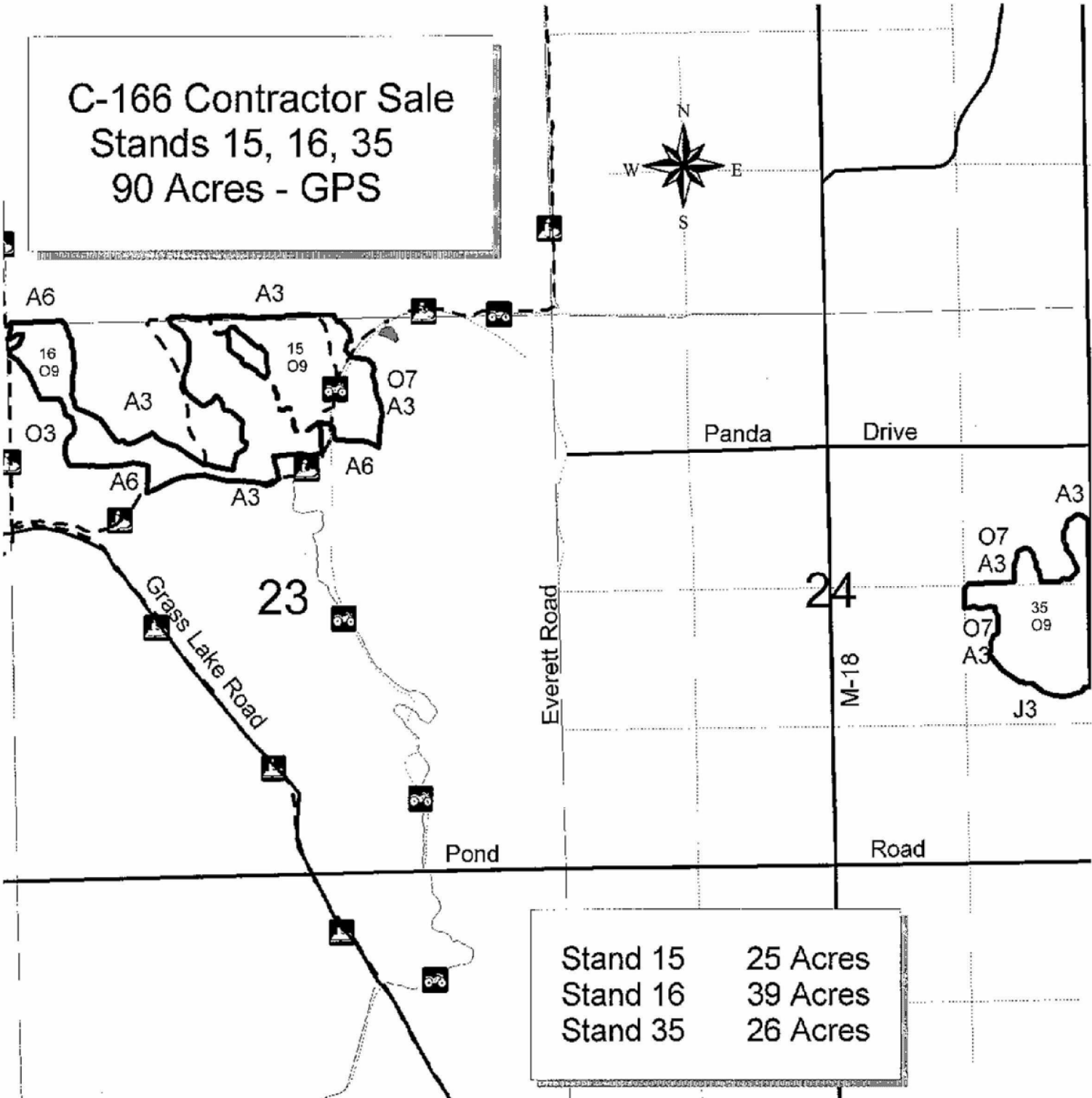
This information is provided by authority of Part 525 of Act 451, PA 1994, as amended.

SALE NUMBER	YEAR
003	09
DATE	PAGE OF
10-27-08	1 1

FOREST MANAGEMENT UNIT Roscommon FMU		COUNTY Roscommon	MAPPED BY Dale Ekdöm	DATE 10-27-08	PAGE 1	OF 1
TOWNSHIP 21N	RANGE 03W	SECTION(S) AND SUBDIVISION(S) 23 - N1/2NE; NW1/4 24 - SENE; NESE		0 0.25 0.5 Miles		

Cover Type				Density	
A = Aspen	H = Hemlock	P = Lowland Poplar	V = Bog or Marsh	0 = Non Stocked	5 = Pole Timber Medium
B = Paper Birch	J = Jack Pine	Q = Mixed Swamp Cnfr	W = White Pine	1 = Seeding Sapling Poor	6 = Pole Timber Well
C = Cedar	L = Lowland Brush	R = Red Pine	X = Non Stocked	2 = Seeding Sapling Medium	7 = Saw Timber Poor
E = Swamp Hclwoods	M = Mpl, Bch, Brch	S = Black Spruce	Z = Water	3 = Seeding Sapling Well	8 = Saw Timber Medium
F = Spruce Fir	N = Marsh	T = Tamarack		4 = Pole Timber Poor	9 = Saw Timber Well
G = Grass	O = Oak	U = Upland Brush			

C-166 Contractor Sale
Stands 15, 16, 35
90 Acres - GPS



Stand 15	25 Acres
Stand 16	39 Acres
Stand 35	26 Acres