



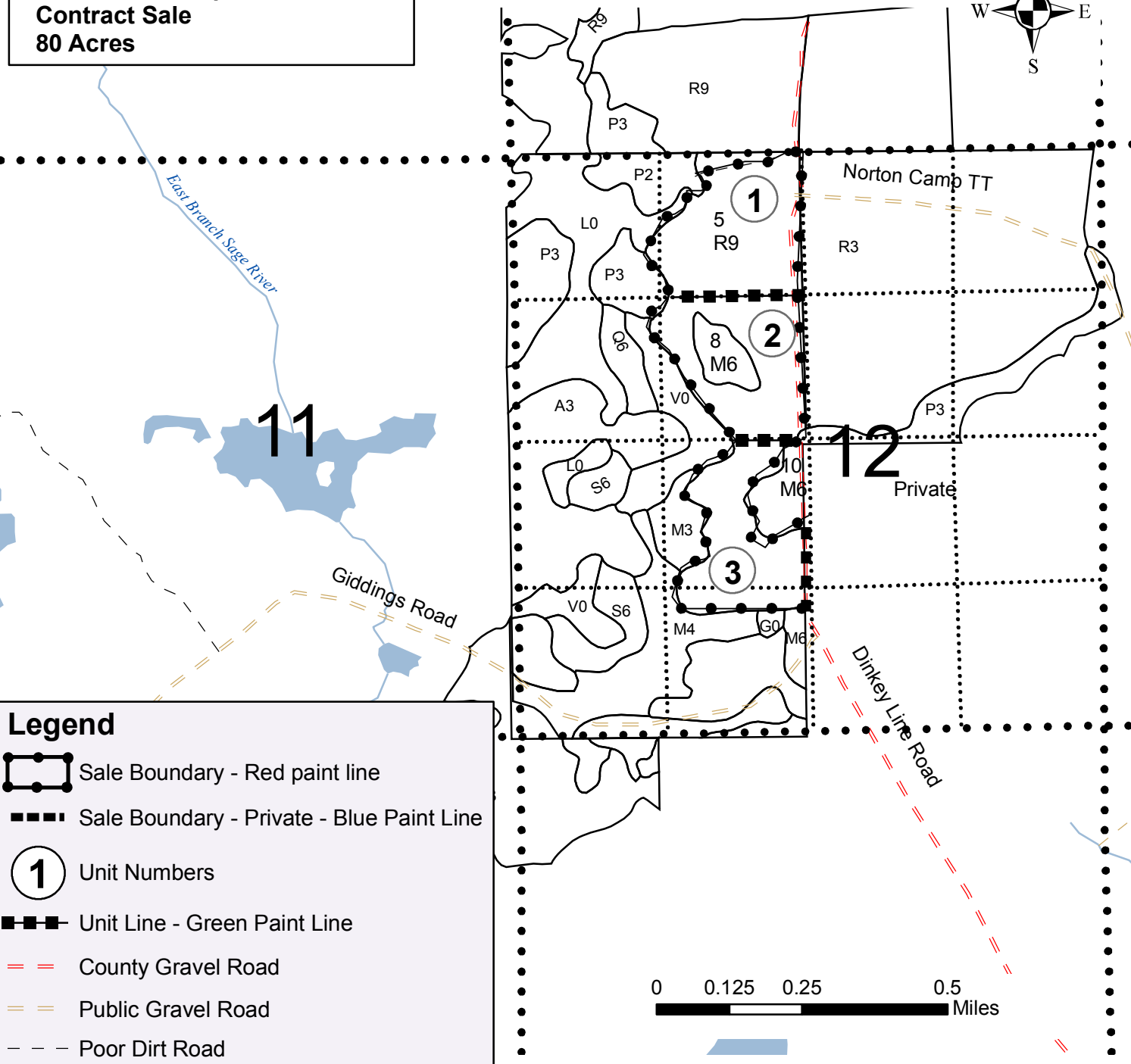
Michigan Department of Natural Resources – Forest, Mineral & Fire Management
TIMBER SALE MAP

This information is provided by authority of Part 525 of Act 451, PA 1994, as amended.

SALE NUMBER	YEAR
DATE	PAGE OF
1/23/2009	1 1

FOREST MANAGEMENT UNIT Sault - Naubinway		COUNTY Mackinac	MAPPED BY Rodock	DATE	PAGE	OF
TOWNSHIP T44N	RANGE R08W	SECTION(S) AND SUBDIVISION(S) 12		1/23/2009	1	1
Cover Type				Density		
A = Aspen	H = Hemlock	P = Lowland Poplar	V = Bog or Marsh	0 = Non Stocked	5 = Pole Timber Medium	
B = Paper Birch	J = Jack Pine	Q = Mixed Swamp Cnfr	W = White Pine	1 = Seedling Sapling Poor	6 = Pole Timber Well	
C = Cedar	L = Lowland Brush	R = Red Pine	X = Non Stocked	2 = Seedling Sapling Medium	7 = Saw Timber Poor	
E = Swamp Hdwoods	M = Mpl, Bch, Brch	S = Black Spruce	Z = Water	3 = Seedling Sapling Well	8 = Saw Timber Medium	
F = Spruce Fir	N = Marsh	T = Tamarack		4 = Pole Timber Poor	9 = Saw Timber Well	
G = Grass	O = Oak	U = Upland Brush				

Sault RRP Compartment 152
Contract Sale
80 Acres



Legend

- Sale Boundary - Red paint line
- Sale Boundary - Private - Blue Paint Line
- Unit Numbers
- Unit Line - Green Paint Line
- County Gravel Road
- Public Gravel Road
- Poor Dirt Road