



Michigan Department of Natural Resources – Forest, Mineral & Fire Management
TIMBER SALE MAP

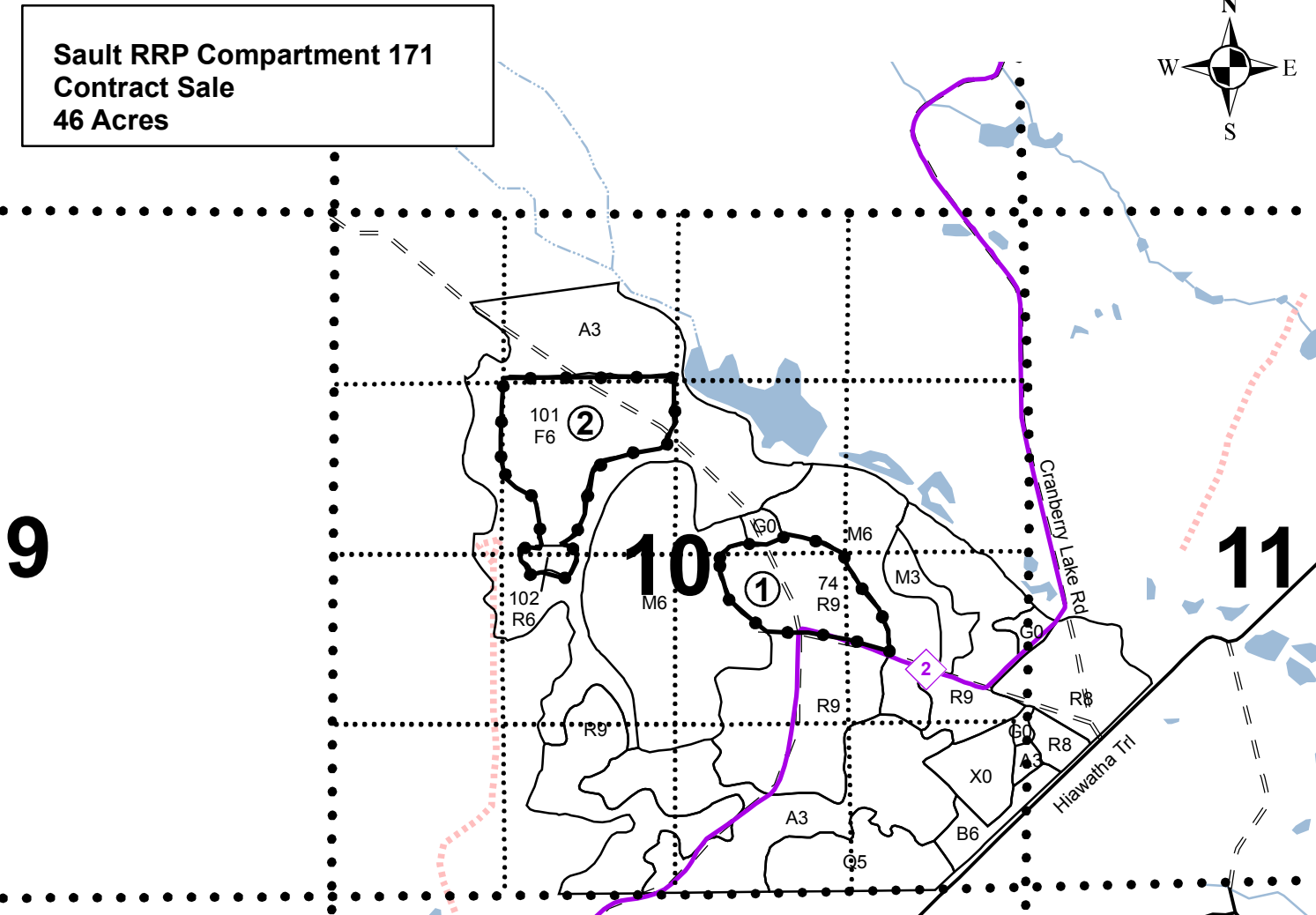
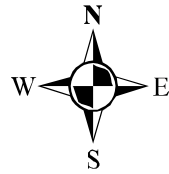
This information is provided by authority of Part 525 of Act 451, PA 1994, as amended.

SALE NUMBER	YEAR
DATE	PAGE OF
1/26/2009	1 1

FOREST MANAGEMENT UNIT Sault - Naubinway		COUNTY Mackinac	MAPPED BY Rodock	DATE 1/26/2009	PAGE 1	OF 1
TOWNSHIP T43N	RANGE R09W	SECTION(S) AND SUBDIVISION(S) 10				

Cover Type				Density	
A = Aspen	H = Hemlock	P = Lowland Poplar	V = Bog or Marsh	0 = Non Stocked	5 = Pole Timber Medium
B = Paper Birch	J = Jack Pine	Q = Mixed Swamp Cnfr	W = White Pine	1 = Seedling Sapling Poor	6 = Pole Timber Well
C = Cedar	L = Lowland Brush	R = Red Pine	X = Non Stocked	2 = Seedling Sapling Medium	7 = Saw Timber Poor
E = Swamp Hdwoods	M = Mpl, Bch, Brch	S = Black Spruce	Z = Water	3 = Seedling Sapling Well	8 = Saw Timber Medium
F = Spruce Fir	N = Marsh	T = Tamarack		4 = Pole Timber Poor	9 = Saw Timber Well
G = Grass	O = Oak	U = Upland Brush			

**Sault RRP Compartment 171
 Contract Sale
 46 Acres**



Legend

- Sale Boundary - Red paint line
- Unit Numbers
- County Paved Road
- Public Gravel Road
- Closed Road
- Snowmobile Trail

